



Absolute PRO™

IP based Dual Technology Barrier

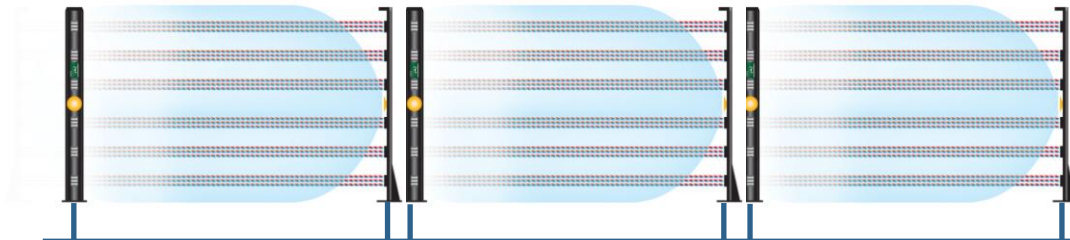
IP Native | R 200m | 12/24V or PoE | Grade 4



Absolute PRO™

Product Introduction

- | Absolute PRO™ is a High Security Active Barrier
- | IP Based (IP Native)
- | Enclosed in two tamper protected extruded aluminum columns
- | Combining bi-directional Infrared and Microwave Technology
- | With maximum range up to 200m
- | Certified Grade 4 | Environmental Class IV



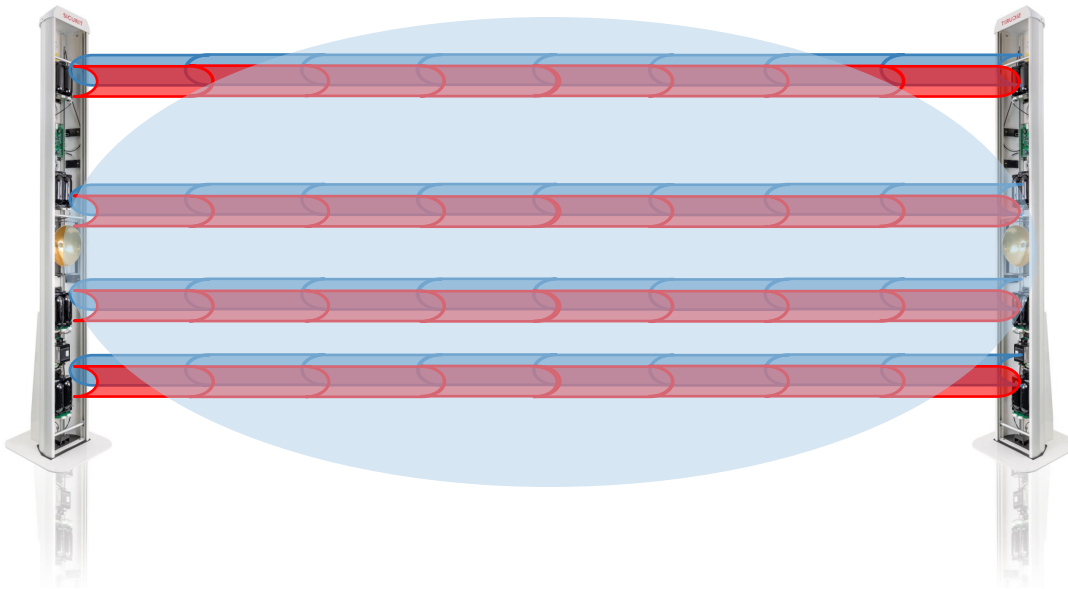
LAN Network

Absolute PRO™

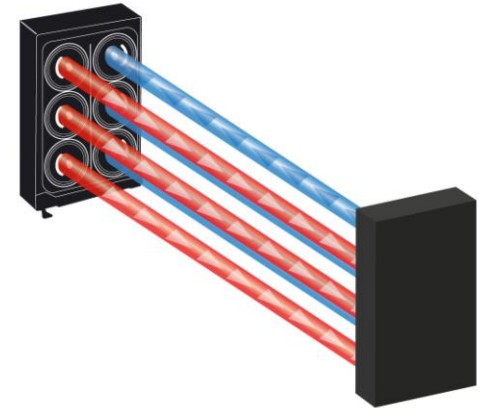
Patented IR Technology

Absolute PRO™ Absolute PRO™ is equipped with Sicurit latest patented Bi-directional IR Technology, the only Infrared Technology completely immune to sunlights and tamper attempts

HOW IT WORKS



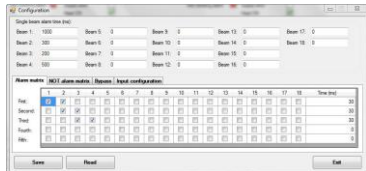
Patented 3TX+3RX IR Beam



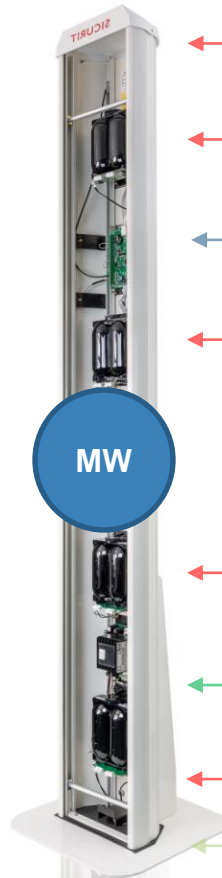
In case of any false exposure the inflicted receiver raises an alarm, but as the corresponding receiver on the other side is getting a correct signal, the system will NOT set off the Alarm

Absolute PRO™

Product Anatomy



Configuration SW



-- Anti-Climbing Top Cover

-- Bi-Directional IR Modules

-- Analysis & Communication Board

- Receives and evaluates all information from each IR Beam
- Set off Alarm Conditions accordingly
- Powers all IR Beams
- Connects with HyperPower SW and third Party integrated VMS (API)

-- Power Supply (12V-230V or PoE+)

-- Ground Base (or Wall-mounting)

Absolute PRO™



Target Direction Analysis (TDA)

Avantgarde™ provides not only simple alarm information but even target direction (IN or OUT) information which makes even target tracking with perimeter CCTV cameras easier and more accurate



Predictive Maintenance Tools

Another key innovation is the Signal Efficiency Analysis (SEA) which continuously monitor the optical communication efficiency of each IR beam which could decrease as for instance due to dirty Perplex or any other factor that can cause optical communication reduction

Unique Features

5Ds

Detection Scenarios (& Alarm filter)

Being each Infrared beam equipped with microprocessor, individual crossing parameters can be set and up to 5 multiple intrusion detection scenarios can be programmed to better define detection target based on intrusion attempts behaviours



Infrared Beams Control (ON-OFF)

Avantgarde™ can adapt itself to any drastic environmental changing such as big snow falls, growing grass or sand storms by simply disabling without additional wire connections those Infrared beams temporally covered preserving its capability of detection

Absolute PRO™

Versions

Standard Versions

H: 2m | 3 IR + 1MW



IMTDT200(P)/2.0

H: 2.5m | 4 IR + 1MW



IMTDT200(P)/2.5

H: 3.0m | 5 IR + 1MW



IMTDT200(P)/3.0



Fully Customizable

Number of IR's Expandable

Columns height customizable

Columns Colors: Black, White, RAL's and ICAO

Power-Supply: 230V (PSU) or PoE+



Absolute PRO™

Why to Choose

Key Benefits

- ✓ Linear Detection | NOT Volumetric
No needs of Wide Corridors to Deploy
- ✓ One Single Connection with PoE version
- ✓ Reduced Infrastructure
- ✓ High Target Discrimination (5DS)
- ✓ Complete Remote Diagnostic
- ✓ 200m range in all Weather conditions



The Only...

- 1 Able to define Crossing Direction (IN&OUT)
- 2 Equipped with Predictive Maintenance Tools
- 3 With Full Remote Control (ON-OFF)
- 4 DualTech Barrier with Distributed Intelligence (5DS)
- 5 End-2-End Active DualTech Barrier
- 6 Able to send ONVIF Commands (Via IMTIPLUG Module)



IN & OUT | Predictive Maintenance | ON-OFF | Detection Scenarios

Absolute PRO™

Technical Features

FEATURES	DESCRIPTIONS
Outdoor Range	50m (IMTDT050/X.X) and 200m (IMTDT200/X.X)
Columns Height	Standard 2/2.5/3.0/4.0m – on request up to 6m
Number of IR Beams	Minimum 3 up to 18 (Depending on columns height)
Number of Microwaves	1 (max 2 for IMTDT/4.0 and higher versions)
Alarm response time	From 25ms up to 1000ms (selectable for each Beam + Multiple alarm intrusion scenarios)
Probability of detection (POD)	Greater than 98%
Power Supply	12VDC ±15% and 24VAC ±20% (Anti-mist heaters) 110/230V with BEA1224ALIEX or BEA1224ALIEX-USA NEW PoE+ versions (IMTDT200P/X.X)
Operating Temperatures	From -25°C to +75°C From -40°C to +75°C with IMERES module
Alarm Output	C form Contact Relay Outputs on MasterTX and SlaveRx columns
Tamper Output	N.C. Contact switch on MasterTX and SlaveRx columns
Ethernet standard	Ethernet IEEE 802.3af, TCP/IP
Integrated Platforms	Genetec, HyperPower Via HyperPower: Geutebrueck, Milestone, Winguard, Lensec
Integration tools	API, Modbus TCP, SDK (via HyperPower)
Auxiliary INPUT	2 in each column
Auxiliary O.C. OUTPUT	2 in each column
Column Dimensions (mm.)	260(W) x 145(P) x (H)
Base Dimensions (mm.)	400 x 400 (IME207/IME208)
Column IP rating	IP55
Configuration Tools	Web-browser for barrier communication and configuration setup Software (Windows® based) for barrier parameters setting and diagnostic
Electro magnetic compatibility	In compliance with European standards (FCC pending)
Product classification	Security Grade 4 - Environmental Class IV (EN 50131-1:2006, EN 50131-1-2-4:2008)
Warranty	Comprehensive 2 years warranty on HW and SW

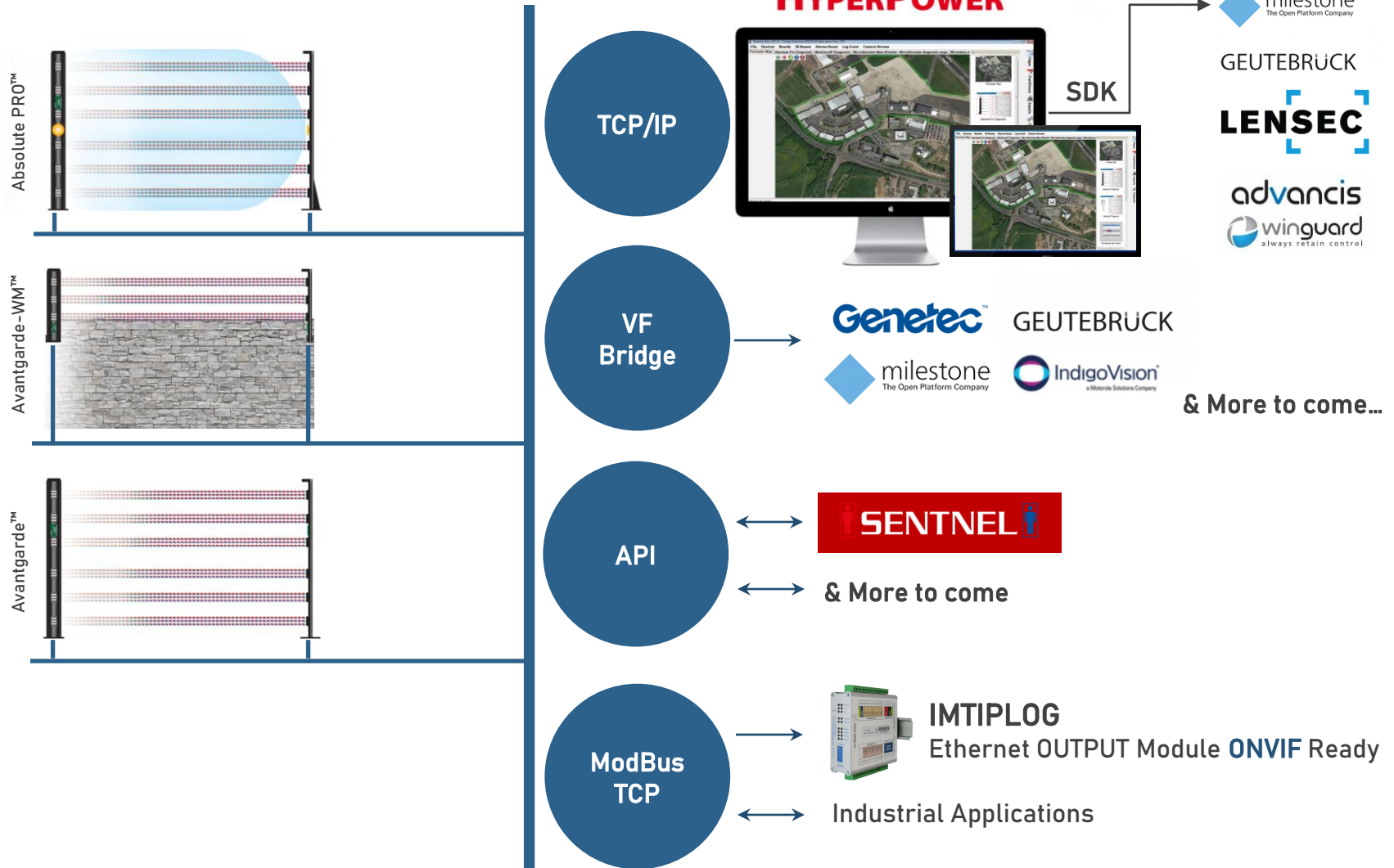


I/O Embedded



Absolute PRO™

Integration Options



HyperPower™

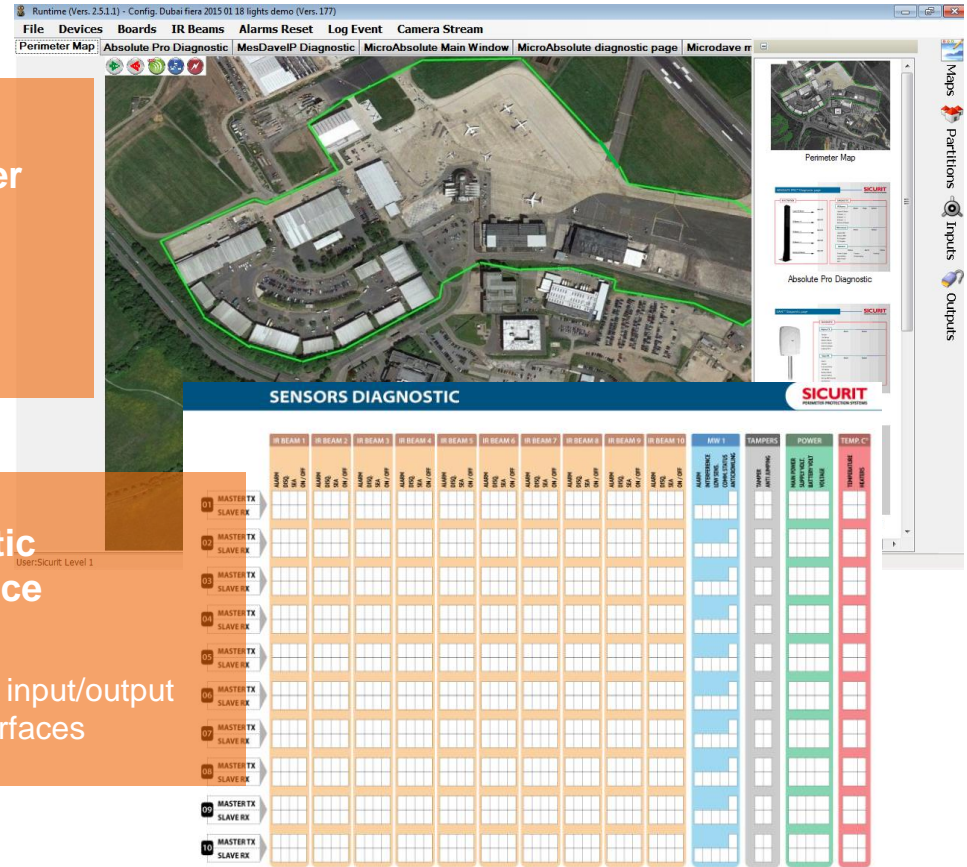
Alarm & Event Management SW

Alarm Supervision, Diagnostic and Control SW based on a client-server architecture

Fully interactive mapping with secure communications and simple graphical configuration

Complete remote diagnostic supervision for maintenance purposes

Supports dry contacts and digital input/output connections via RS485 or IP interfaces



SDK

Integrated with main VMS/PSIM Platform e.g. Milestone, Geutebrueck, Winguard and Lensec

IMTIPILOG

Ethernet Output Module

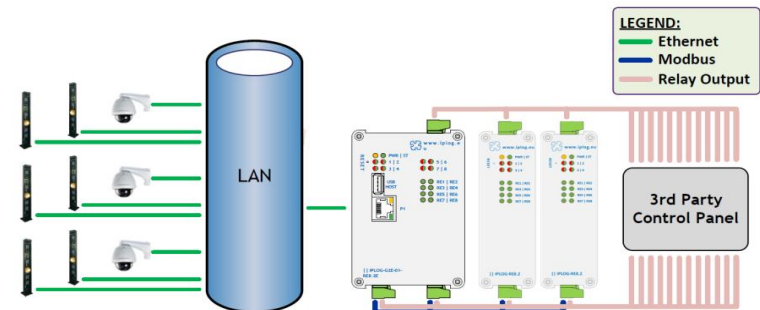


IMTIPILOG has been designed to provide anywhere in the IP Network contact relays outputs from Avantgarde™ and Absolute PRO™.

IMTIPILOG additionally provides watchdog functionality and e-mails or SMS messages to the System Integrator that wants to be notified in case of system malfunctions.



Supported by **ONVIF Profile S and T**, IMTIPILOG can be configured to control any perimeter connected network camera



VF-Bridge™

Features

- VF Bridge supports up to 128 set of Absolute PRO™
- Connects with Major VMS/VSS
- Internal Log-Event reporting
- Not bounded to specific servers
- Includes an intuitive password-protected SW to control and diagnose all connected Virtual Fences



VF-Bridge™



Events Available on VF-Bridge™

- Alarm
- MW Pre-Alarm (Absolute PRO™)
- Tamper
- SEA
- IR Disqualification (Avantgarde™)
- AUX Input
- Main Power Fault
- Virtual Fence Watchdog
- VF-Bridge™ Watchdog
- Heater ON/OFF

SICURIT

Worldwide Applications

- Critical Utilities
- Corrections
- Industrial
- Transportation
- Government | Military
- VIP Residential



SICURIT

Quality & Certifications

CERTIFICATE
N° CN/17061

SOCOTEC

ISO 9001:2015

certifies that:

SICURIT Alarmitalia S.p.A.

Via Gadames, 91/93 - 20151 - Milan, Italy

operates a management system that has been assessed as conforming to:

ISO 9001:2015

for the scope of activities:

Design, production, sale and assistance of equipment and remote control systems and not, such as: security equipment (anti-intrusion, surveillance, TVCC broadcast with closed or open circuit) and of firefighting equipment management systems.

Issue date: 29 March 2020
Valid until: 28 March 2023 (Subject to adherence to the agreed ongoing programme, successful endorsement of certification following each audit and compliance with the terms and conditions of certification)
Original date of certification: 29 March 2017

Mo Ghauis Operations Director SOCOTEC Certification UK

Mo Ghauis

UKAS
CERTIFICATION
18001

IAF

SOCOTEC Certification UK Ltd, 6 Gordano Court
Serbert Close, Portishead, Bristol BS20 7FS
UNITED KINGDOM
www.socotec-certification-international.co.uk

CERTIFICATE

TESTALARM Praha s. r. o.
zkusobna EZS
Božanovská 2098
Horní Počernice
Ref. N08:TRAP-142019

ABOUT CLASSIFICATION OF I&HAS COMPONENTS
(beyond accreditation of testing laboratory according to EN ISO/IEC 17025)

Holder: Sicurit CS spol. s r.o.
Videňská 90, 639 00 Brno
ID. No.: 44960212
Product name: IR barrier

Type variant: **IMTIR50 (AVANTGARDE™)**

Test report No.: 2485 9537
Kód: 694
Issue date: 5.6.2019

Pursuant to result of tests performed in accredited testing laboratory No.1172 - TESTALARM Praha was mentioned equipment advised and **verified,**

that according to relevant articles of ČSN EN 50131-1ed. 2 and according to mentioned to prescription of the National Security Authority of Czech Republic, version 2019 and mentioned standards (technical specifications etc.)

ČSN CLC/TS 50131-2-9	satisfy	ČSN EN 50130-5 ed.2
ČSN EN 50131-1 ed.2		ČSN EN 50130-4 ed.2 ČSN EN 55032 ed.2

to definite requirements for its application in objects following the security grade.

Grade: 4	Risk: High
-----------------	-------------------

Using conditions:
The version IMTIR200/2.0 (AVANTGARDE™) was tested - 2.0 indicates the size of the column 2 m. Produced size up to 6 m (6.0).

Type variant:
IMTIR50 (AVANTGARDE™) - it differs in range (50m) from tested IMTIR200 / 2.0 (AVANTGARDE™).

Function of equipment was verified for environmental class IV according to ČSN EN 50131-1 ed. 2 art. 7.4.

Function of equipment are compliant for directives 2014/30/CE and RED 2014/53/EU.

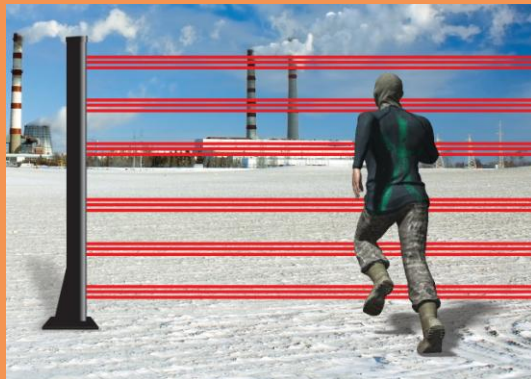
Certificate availability:
from 5.6.2019 till 4.6.2022

Declaration: Against this Certificate is possible to remonstrate till 15 days from the day of deliverance by testing laboratory TESTALARM PRAHA. Certificate may be reproducing only entire and double sided.

Date: 5.6.2019

Stamp and signature: *[Signature]*

TESTALARM Praha s. r. o.
zkusobna EZS



SICURIT

PERIMETER PROTECTION SYSTEMS

SICURIT Perimeter Protection Systems is a leading Italian manufacturer of Perimeter Intrusion Detection System (PIDS) designed to protect Critical Infrastructures. Committed to innovation and product diversification, SICURIT products range includes patented bi-directional IP Native IR & DT barriers (Virtual Fences) for both ground and wall-mounting applications and the unique of its kind HSF Activa™, an All-in-One high-security fence with integrated and completely hidden/protected Pin-Point detection technology.

www.sicurit.com

#Needs4PIDS > Follow us on LinkedIn