

EMPOWERING MANUFACTURING EXCELLENCE

SMART FACTORY SOLUTIONS
FOR THE MODERN PRODUCTION FLOOR

THE REALITY

Your production floor is only as strong as your weakest process.

01

DOWNTIME

"When a machine goes down, how long before the right person knows?"

02

LATENCY

"When a shift underperforms, do you find out in real-time — or next week?"

03

DISCONNECT

"When departments don't share a system, who fills the gaps?"

04

ACCOUNTABILITY

"When something goes wrong, can you trace exactly who did what and when?"

LEGACY TOOLS CREATE BLIND SPOTS

THE OLD WAY

- ❗ ANDON LIGHTS: No context alerts
- ❗ EXCEL TRACKING: Late & incomplete
- ❗ WHITEBOARDS: No history or accountability
- ❗ RADIOS: Information dies in hallways

THE COST

- ✗ Lost output per shift
- ✗ Recurring root causes ignored
- ✗ Massive unplanned downtime
- ✗ Departmental silos

WHAT IF YOUR PRODUCTION FLOOR COULD THINK?

AUTO-DETECTION

REAL-TIME EFFICIENCY

UNIFIED DATA

INTRODUCING TREETECH

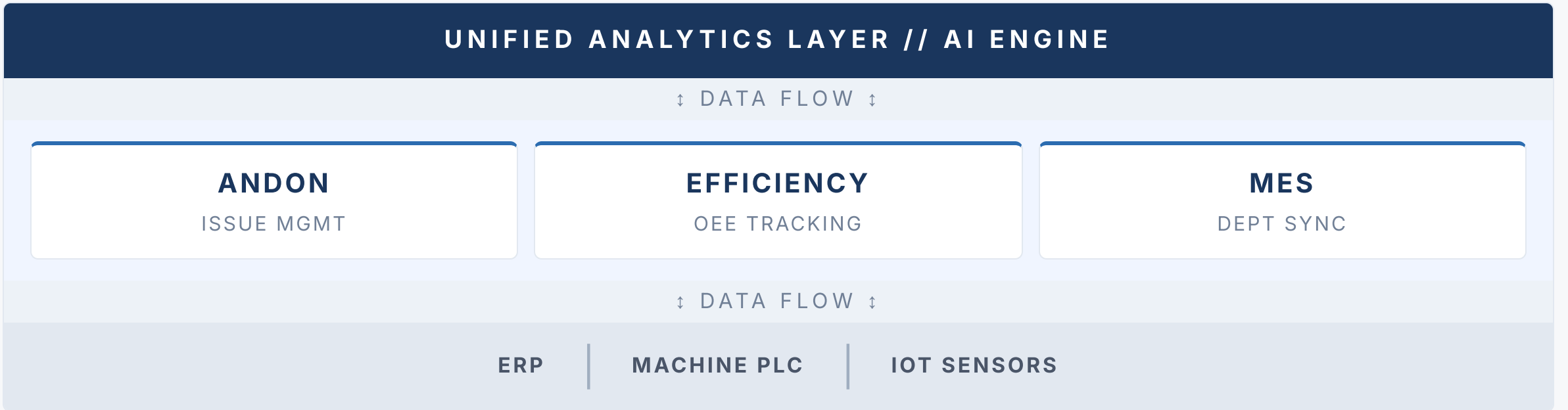
Treetech is a production floor execution platform built for manufacturers who've outgrown spreadsheets and legacy tools.

50+
ENGINEERS

10+
YEARS EXP



THE ECOSYSTEM



** Each module can be deployed and operated independently.*

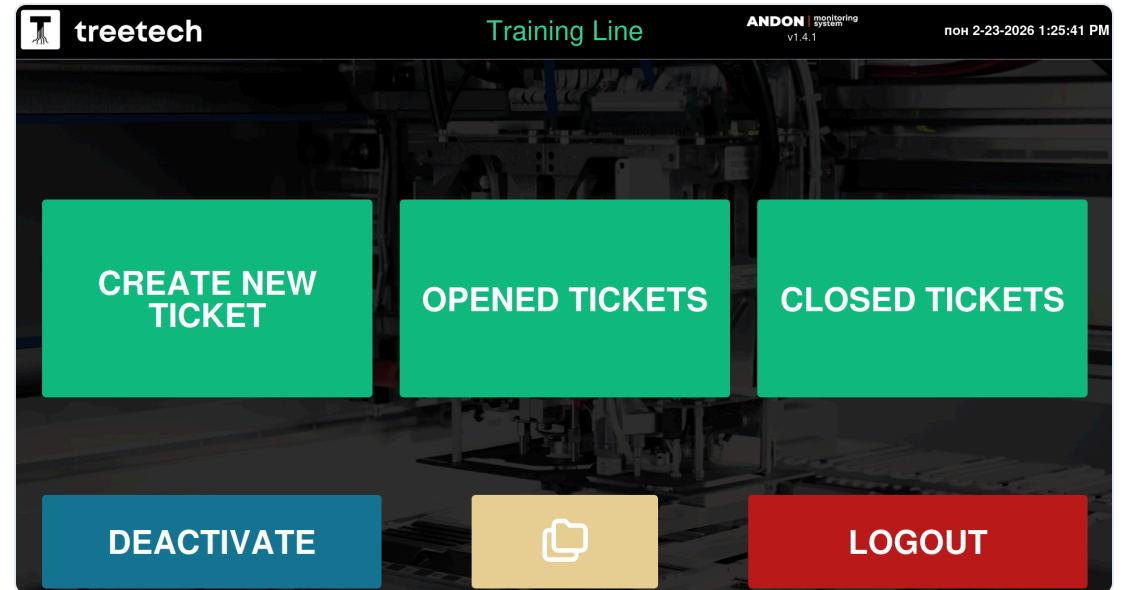
KEY CAPABILITIES

—
INDUSTRIAL-GRADE FEATURES FOR THE PRODUCTION FLOOR

ISSUE DETECTION

Issues are captured automatically via sensors or manually via touchscreens. The system knows immediately.

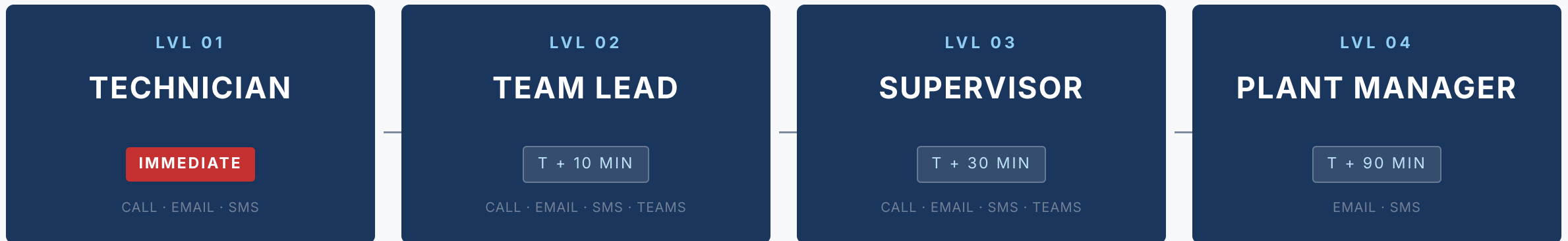
- Instant Categorization
- Auto-Timestamping
- Multi-Channel Alerts



Andon touchscreen installed directly on the production line — operators log and categorize an issue in under 5 seconds, no training required.

SMART ESCALATION MATRIX

Critical issues never fall through the cracks.



[!] AUTOMATED HIERARCHY ENFORCEMENT — NO MANUAL HANDOFF REQUIRED

** All levels, roles, timings and notification channels are fully configurable to match your existing escalation procedures.*

LIVE EFFICIENCY

Track machine efficiency and worker productivity in real-time across every line and shift.

PLANNED OUTPUT

100%



ACTUAL OUTPUT

82%



Gap: 18% — visible in real-time

LIVE

Line: Assembly A 12:52:50

Production Active: 3 Products, 113 Units

Line Statistics: Line Efficiency 92%

Active Workers: 10 | Machines in Use: 15

Hourly Production (Last 8 Hours)

Product	03:00	04:00	05:00	06:00	07:00	08:00	09:00	10:00 (Current)	Target
Widget A	114/100	102/100	104/100	120/100	119/100	115/100	101/100	101/100	~100
Gadget B	89/90	82/90	96/90	85/90	90/90	96/90	89/90	89/90	~90
Gizmo C	151/140	135/140	134/140	160/140	146/140	149/140	138/140	138/140	~140

Efficiency Trend (Last 12 Hours): Line graph showing efficiency percentage over time, with a target line at 75%.

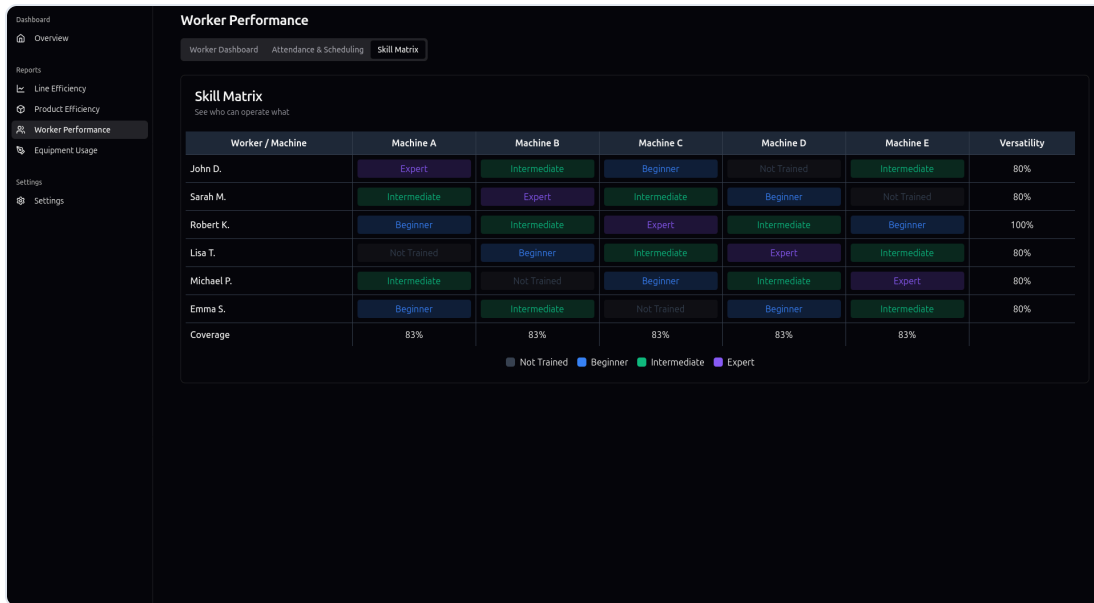
Current Workers (10):

- John Doe** (operator, morning shift): Machine A, Machine B, Machine C
- Jane Smith** (supervisor, morning shift): Machine D, Machine E, Machine F, Machine G
- Alice Johnson** (operator, afternoon shift): Machine H, Machine I, Machine J
- Bob Williams** (maintenance, afternoon shift): Machine K, Machine L, Machine M, Machine N
- Charlie Brown** (operator, night shift): Machine O, Machine A, Machine B
- Diana Ross** (supervisor, night shift): Machine C, Machine D, Machine E

WORKFORCE VISIBILITY

Monitor shift positions and qualification compliance.
Ensure the right skills are on the floor.

- Skill Matrix Sync
- Staffing Gap Alerts
- 98% Compliance Target



Worker / Machine	Machine A	Machine B	Machine C	Machine D	Machine E	Versatility
John D.	Expert	Intermediate	Beginner	Not Trained	Intermediate	80%
Sarah M.	Intermediate	Expert	Intermediate	Beginner	Not Trained	80%
Robert K.	Beginner	Intermediate	Expert	Intermediate	Beginner	100%
Lisa T.	Not Trained	Beginner	Intermediate	Expert	Intermediate	80%
Michael P.	Intermediate	Not Trained	Beginner	Intermediate	Expert	80%
Emma S.	Beginner	Intermediate	Not Trained	Beginner	Intermediate	80%
Coverage	83%	83%	83%	83%	83%	

Legend: Not Trained (Grey), Beginner (Blue), Intermediate (Green), Expert (Purple)

DEPARTMENT COORDINATION

One system for **Commercial** · **Engineering** · **Production** · **Management**

BEFORE

THE LAG

Silos between engineering decisions and production execution. The floor operates on outdated information.

AFTER

THE SYNC

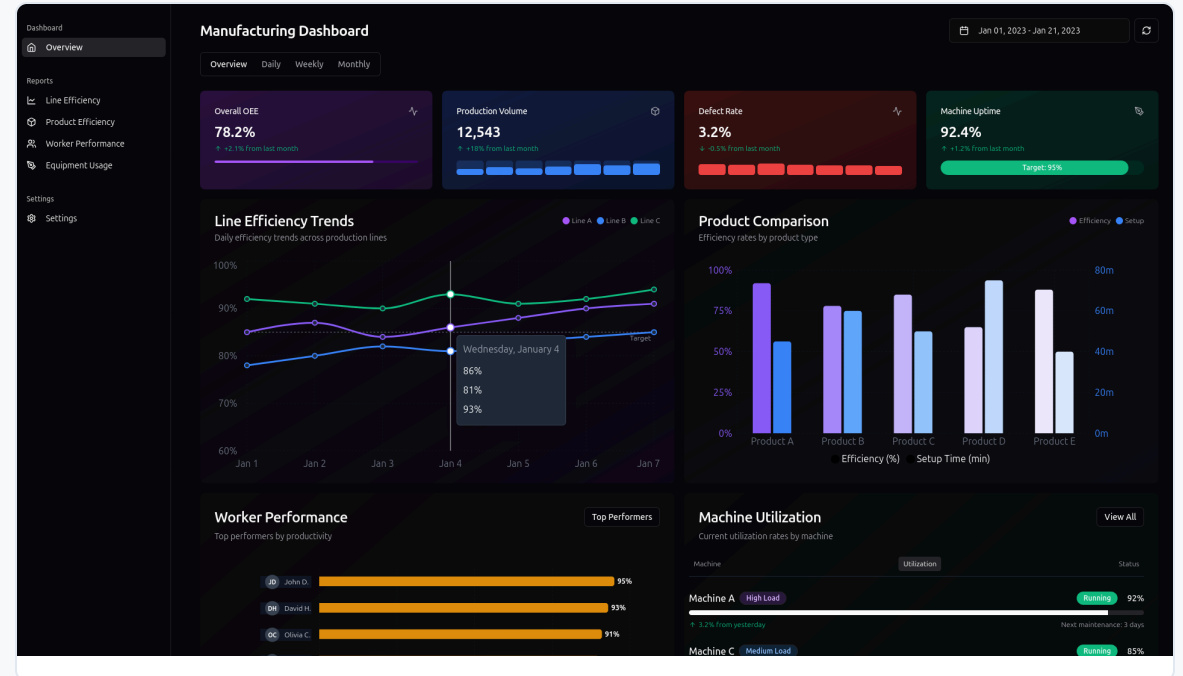
Bi-directional information flow. Updates are reflected instantly on the floor — no delays, no gaps.

UNIFIED ANALYTICS

All production data. One place. Actual insights.

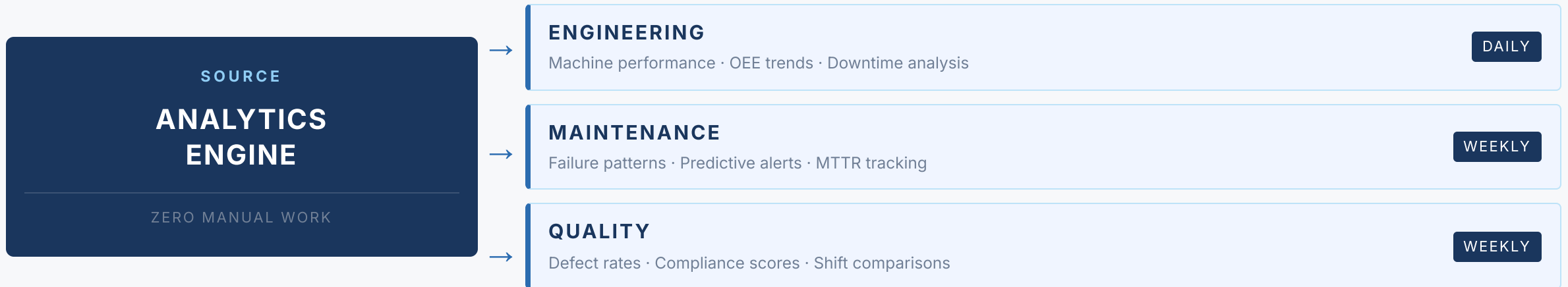
No more pulling reports from five different systems and merging in Excel. Every report is live, always current, and accessible.

• SINGLE SOURCE OF TRUTH ACTIVE



CUSTOM REPORTING

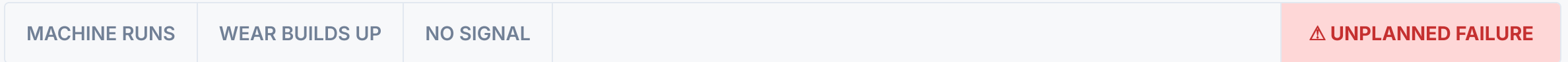
Each team receives exactly what they need — automatically, on schedule.



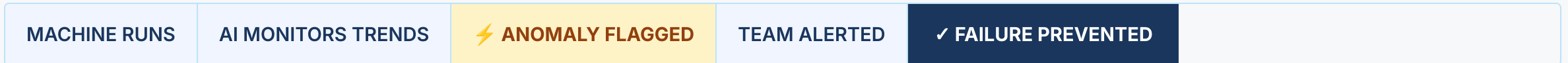
AI ANOMALY DETECTION

Catch problems before they become downtime.

WITHOUT AI



WITH TREETECH AI



PREDICTIVE MAINTENANCE

Act before failure, not after.

PROCESS OPTIMIZATION

Continuously improve what the data reveals.

THE IMPACT

—
MEASURABLE RESULTS FROM THE PRODUCTION FLOOR

THE IMPACT

-45%

RESPONSE TIME

From alert to resolution, dramatically faster

-30%

DOWNTIME

Fewer unplanned stops across all lines

+18%

OUTPUT

More units per shift, same resources

98%

COMPLIANCE

Qualification & staffing standards maintained

WHY TREETECH?

01

DNA

Built for the floor, not adapted from generic office software.

02

MUSCLE

50+ dedicated engineers with global delivery capability.

03

SPEED

Rapid implementation. No 18-month rollout cycles.

04

MODULAR

Start with one module, expand as you scale.

NO RIP AND REPLACE

Fits into your existing operations. Our team handles all integration work.

YOUR EXISTING SYSTEMS

ERP

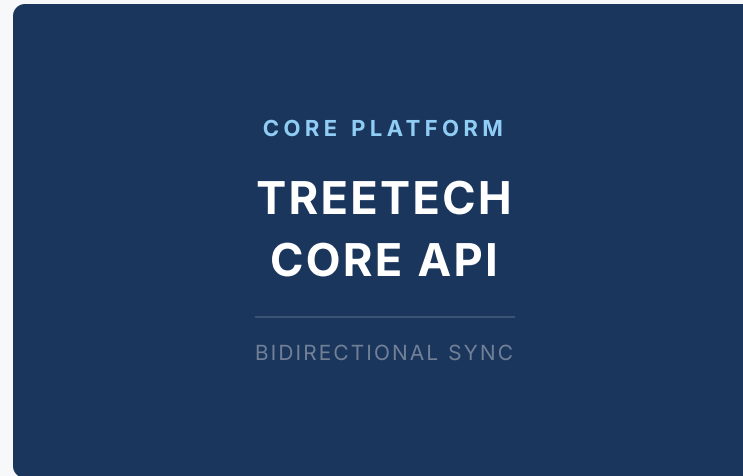
SAP · ORACLE

MACHINE PLC

SIEMENS · ROCKWELL

IOT / SQL

SENSORS · DATABASES



TREETECH MODULES

ANDON

EFFICIENCY

MES

ANALYTICS



HOW WE WORK



LET'S TALK

30-MINUTE DISCOVERY SESSION

LIVE ROI ANALYSIS

TREETECH.AI



Blagoja Mandarov

DIRECTOR OF SALES

blagoja.mandarov@treetech.ai

+389 70 225 024

APPENDIX: MODULE SUMMARY

MODULE	FUNCTION	BENEFIT
ANDON	Issue Detection	Faster Response
EFFICIENCY	Live OEE Tracking	Higher Output
MES	Department Coordination	No Silos
ANALYTICS	Reporting Hub	Source of Truth
AI LAYER	Anomaly Detection	Prevention