

COMPANY PROFILE



SIS. TER[®]
CONNECTING KNOWLEDGE



Data Value Impact: Digital Transformation Guided by Design

*Specialists in Data
Integration, Data
Visualization and Decision
Support System*

SIS-TER SRL SB® provides **consultancy and services for the entire data value chain.**

Through a multidisciplinary and data driven approach, SIS-TER contributes **to make territories more inhabitable**, facing social, environmental, energetic and cultural challenges together with customers and partners.

SIS-TER **supports public and private decision makers in the field of enabling technologies** and in the design of resilient, smart and sustainable cities thanks to a method of **systemic sustainability.**

Geographic sciences, geomatics, mathematics, arts and technological sciences based on information enable to build the mosaic of people-oriented living and to **understand direct and indirect impacts of urban and territorial transformations**, favoring the development of decision support systems.

SIS-TER offers **consultancy, services and solutions** in a multidisciplinary perspective: from software development and systems integration to property **SaaS** services; from machine learning to **DaaS** services; from sensor scouting to **Geomatics** services and GIS analysis.

SIS.TER is an Italian Benefit Company, registered as innovative SME



SIS.TER is Unioncamere National PIDLab



**SIS.TER is certified according to ISO 9001:2015
ISO/IEC 27001:2024
ISO/IEC 27018:2019 and
ISO/IEC 27017:2015
UNI PdR 125:2022**



SIS.TER, through its in-house hub GeoSmart.Lab, is co-founder of Emilia-Romagna Clust-ERS BUILD, AGRIFOOD, INNOVATE and URBAN



Certifications

SIS.TER is National PIDLab for the following technological fields:

- Augmented reality and virtual reality
- Industrial Internet, Internet of Things and/or Internet of Machines
- Cloud
- Big Data and Analytics
- Geolocation
- Information and management systems
- System integrator applied to process automation.

SIS.TER is **ISO 9001:2015** certified for the following purpose: "Design, development and supply of multichannel and web-oriented tools and solutions for information management and distribution, geomatics, Big Data Analysis, innovative solutions for Smart Cities and related assistance and training to customers".

SIS.TER is also **ISO/IEC 27001:2024,**

27018:2019 and ISO/IEC 27017:2015 certified for the following purpose: "Supply in SaaS (Software as a Service) mode of application solutions for the management of assets in the civil and territorial fields".

GeoSmart.Lab is a private R&D hub which is part of SIS.TER.

The "Laboratory of Sciences and Geographic Technologies and of Smart Cities" GeoSmart.Lab is accredited by the High Technology Network of Emilia-Romagna Region as an industrial research and development lab. GeoSmart.Lab is a member of the National Research Registry.

SIS.TER contributes to research projects, training and development through partnerships and agreements with national and international research centers.

Areas of specialization

SIS.TER deals with consultancy services in the field of data, Artificial Intelligence, IoT, network services, geomatics and GIS analysis.

Main areas:

- **asset management**
- **circular economy**
- **smart city**
- **smart land**
- **dashboard control room**
- **data lake**
- **open data and data space**
- **data management plan**

SIS.TER works for:

- **public admin sector**
- **utilities sector**
- **private companies**



1

INDUSTRY 5.0

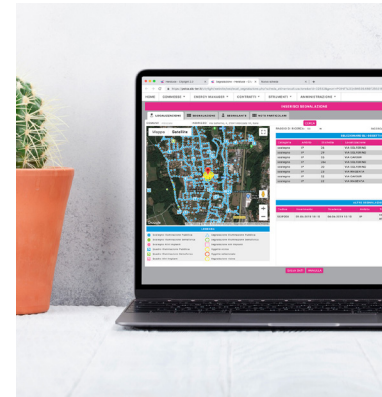
- Consulting
- Audit
- Assessment



3

PROJECTS

- Software Development
- Research



2

PRODUCTS LINES

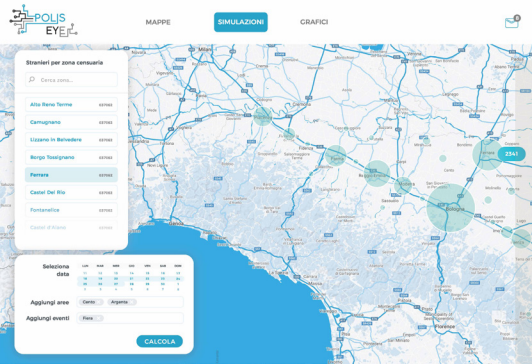
- Data as a Service
- Software as a Service



4

SERVICES

- GIS – Geomatics
- Data Analysis
- Feasibility Studies
- Dematerialization
- Machine Learning
- Sensor Scouting
- Network Service



PROJECTS & SERVICES

SIS.TER is the ideal provider and partner to support customers towards digital transformation.

SIS.TER as technological hub

R&D Projects through GeoSmart.Lab

R&D projects have multidisciplinary and data-driven approaches, also based on AI and GAI technologies, oriented towards sustainability and resilience of cities, territories and enterprises (2030 Agenda objectives).

www.geosmartlab.org

STAY TUNED!



SIS.TER has gained experience in international projects, on the following main topics:

- **environment and ecosystem services**
- **urban economy**
- **territorial vulnerabilities**
- **sustainable logistics**
- **industry 5.0**
- **mobility**
- **telecom networks**
- **smart agriculture**
- **smart land**
- **energetic transition**
- **tourism and heritage**

CONSULTANCY

SIS.TER can support customers with consultancy and services related to:

- territorial assessments
- sustainability metrics and analyses
- thematic cartography and urban analyses
- SINFI – PELL
- Data Management Plan
- Decision Support System
- Design of urban digital systems

PRODUCTS

SIS.TER's products are integrated services classified into two lines: Data as a Service (DaaS) and Software as a Service (SaaS)

Data as a Service (DaaS)

Sistemico Assessment©

Tool that elaborates the ranking of each Italian municipality according to sustainability goals. Sistemico Assessment© supports the understanding and monitoring of territorial strengths and vulnerabilities.



SIS.TER supplies scalable and integrable Data Services on a subscription basis: **reliable and structured data enabling decision making and action building.**

Sistemico Assessment© is based on data from institutional sources, local infrastructures and property sources. Data are updated to various granularity for all Italian municipalities, and not only, with reference to the following topics: environment, society, demography, energy and territorial risks.

STAY TUNED!



GUIDO©

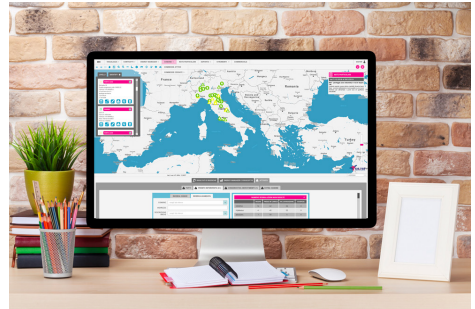
Solution AI based that enables the enhancement of indoor and outdoor cultural destinations through immersive and inclusive experiences.

STAY TUNED!



CityLight®

Tool for the energy assets integrated management, mainly public lighting, traffic lighting and electric vehicles charging station networks. CityLight® manages power networks consistency, maintenance, immediate response, energy management and forecasting, communications with third-parties, on-field activities.



STAY TUNED!



Software as a Service (SaaS)

cityOMNIS®

SIS.TER's core solution for WebGIS and WebMapping systems. Thanks to the collection, integration and elaboration of data from heterogeneous sources, CityOMNIS® allows the visualization, monitoring, analysis and management of the development cycle of urban and territorial context in its main aspects.



STAY TUNED!

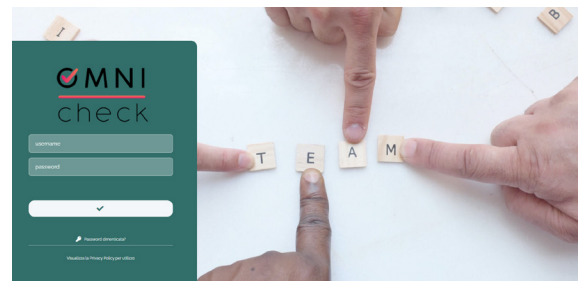


OMNIcheck®

Tool enabling the development of no-code solutions for dematerialized on-field activities such as: inspections, checks, maintenance, audits, diagnoses, surveys, registries, assessments, evaluations, etc..

OMNIcheck® is registered on the Catalogue of Digital Infrastructures and Cloud Services of the National Cybersecurity Agency (ACN).

STAY TUNED!



www.sis-ter.com



SIS-TER SRL SB
via Emilia 69
40026 Imola (BO)
sister@sis-ter.it