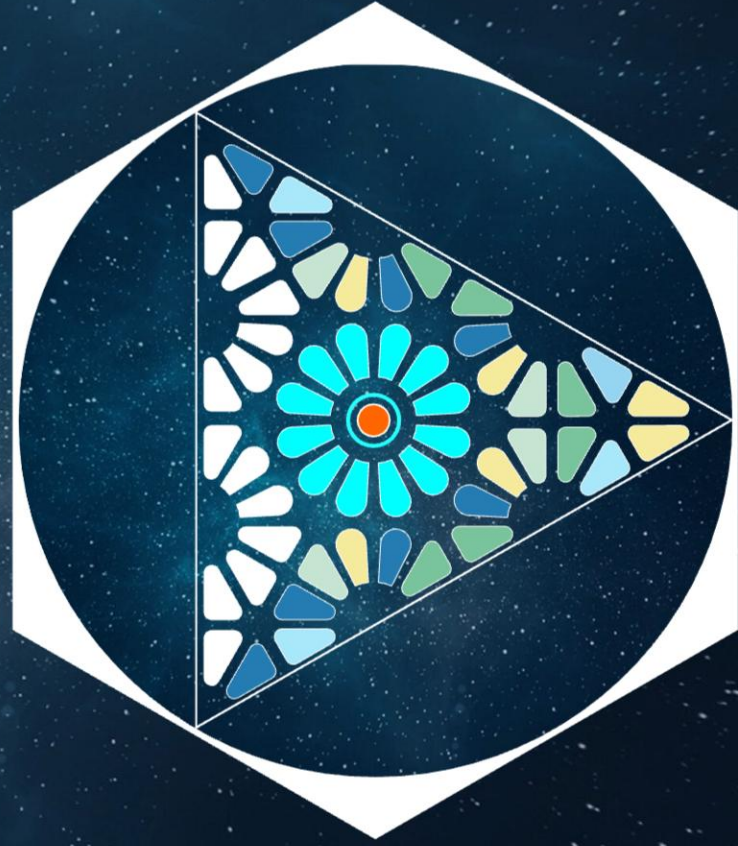
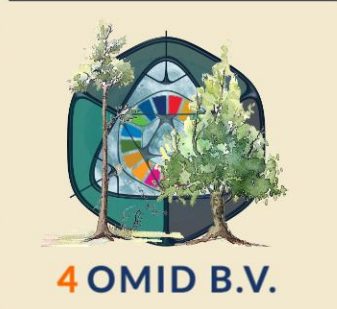
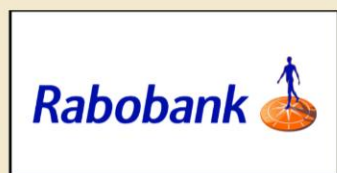


2GETHER @
4 EARTH
2 MARS.com

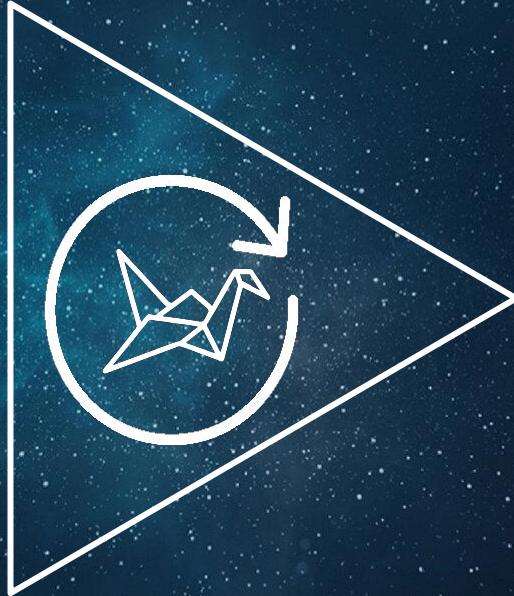




2050



Circular Architectural Techniques



Breaking Historical Barriers



Buckminster Fuller 1960



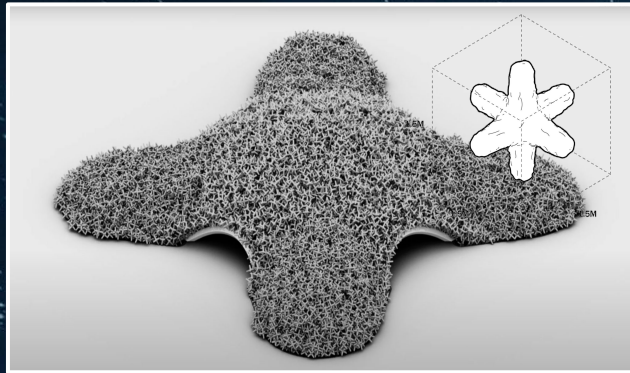
GEOSHIP - 2023



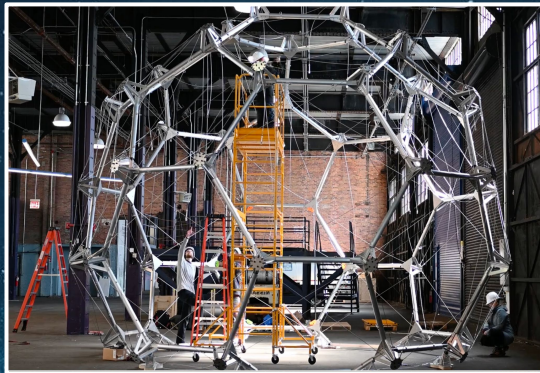
EDGE Amsterdam West



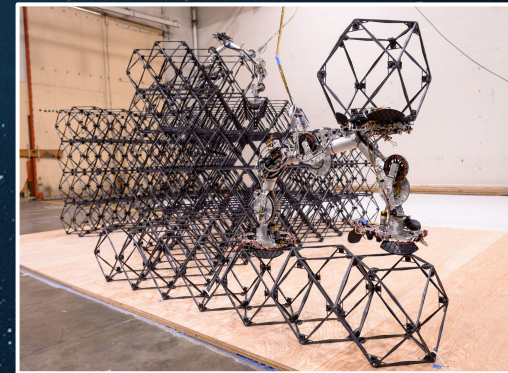
Kinematic Sculpture for Chicago Design Week 2018



HASSELLS' Hexapod & Dome - 2023



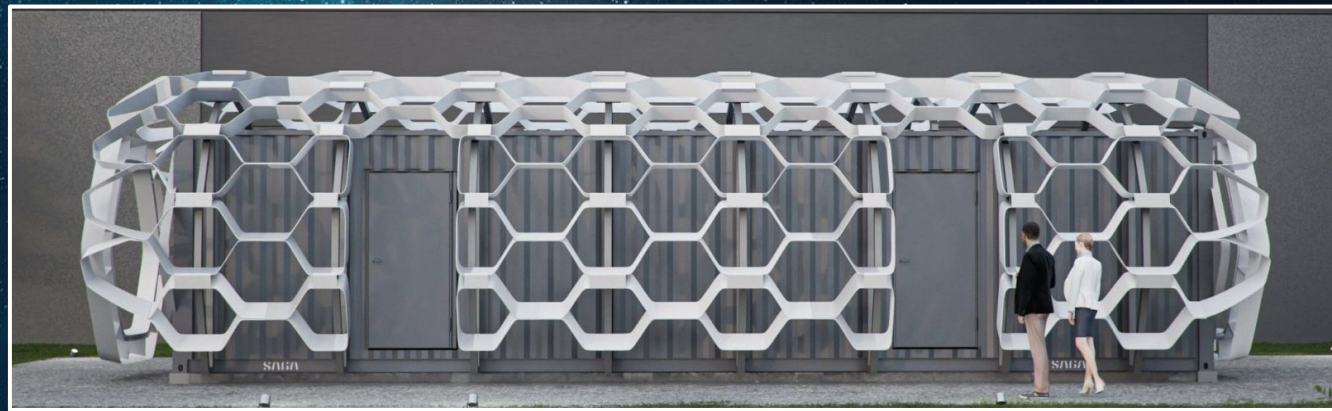
AURELIA, TESSERAE - 2023



ARMADAS - 2019-2024



LUNARK - 2020



SAGA Space Architect, Moon House - 2025

Breaking Historical Barriers



LunarNomad Yurts - 2025



Circular BlueMoon Village 2026





25m²

MVP: 0.5 Million
LunarNomad Yurts



3.300+30.000m²

Trial + Initial: 6.6+33 Million
Circular BlueMoon Village



€40+ Million
Beachhead
d



€262 Billion
SOM



€1 Trillion
SAM



€12 Trillion
TAM

Neuroadaptive Architecture:

Measuring and Designing Human-Centered Geometries for Earth and Extreme Environments



EEG headsets
track brain
activity and
cognitive load



Eye tracking
to analyze
attention,
focus, and
navigation
patterns



**Heart rate monitor
& GSR (skin
conductivity)**
to detect stress
and emotional
arousal



**Motion
sensors**
to observe
movement
patterns and
behavior in
a space



**Temperature
and acoustic
sensors**
to link
environmental
conditions with
physical comfort
or discomfort



IMPEL
2021 Cohort

2021

ClimAccelerator
Built Environment Circular

2022

SBIC
space business innovation centre
Noordwijk

2023-24



Disruptive
Innovation



Radical
Collaboration



System
Change



AUTODESK
Technology Impact

**Climate
KIC**

Rabobank



17 PARTNERSHIPS FOR THE GOALS



13 CLIMATE ACTION




12 RESPONSIBLE CONSUMPTION AND PRODUCTION



11 SUSTAINABLE CITIES AND COMMUNITIES



5 GENDER EQUALITY



AUTODESK
Technology Impact

Rabobank



2GETHER
4 EARTH
2 MARS



4 OMID B.V.