

# Advance in Asia.

Acclime is Asia's leading corporate and advisory services provider. We have your business expansion covered.

ACCLIME.

# Asia's corporate specialist with global standards.

Acclime helps corporate clients seamlessly advance their businesses and interests in difficult-to-navigate markets in Asia and across the region.

## From Asia, for Asia.

Acclime is an Asia-focused corporate services specialist trusted to deliver with speed, flexibility and precision.

We have a genuine, on-the-ground presence in all of Asia's markets. By staying on top of regulatory changes, we help our clients manage local governmental and administrative compliance issues quickly, with a minimum of fuss.



### Message from Acclime's Co-Founder.

"Acclime is owner-operated with an 'employee-first' ethos. We are proud to be primarily owned by the partners and employees in the firm and believe this makes a key difference in the quality of our service to clients."

**Martin Crawford**  
Co-Founder

14

Markets in Asia-Pacific

3

Client service centres

14,500+

Active clients

1,390+

Employees

45+

Nationalities

40+

Languages spoken



### Asia-Pacific operations.

-  Australia
-  Cambodia
-  China
-  Hong Kong
-  India
-  Indonesia
-  Malaysia

-  New Zealand
-  Philippines
-  Singapore
-  Thailand
-  UAE
-  USA
-  Vietnam

### Global business centres.

-  China
-  Hong Kong
-  Mauritius
-  Samoa
-  Seychelles
-  Singapore
-  Taiwan
-  UAE

### Client service centres.

-  Belgium
-  UK
-  USA

# Our services.

Advance your business and reach new Asian markets.

## Market entry advisory

Our cross-border and multi-functional advisory teams will provide all the expert insights you need to confidently gear up for your market entry.

- Feasibility study
- Market entry research
- Competitor search
- Business plan & cash flow forecast
- Entity & transaction structuring (single or multi-country)
- Fund, grant & incentive support & advisory
- Fundraising support
- Licensing advice
- Partner & distributor search
- Market research
- PEO employment
- Due diligence
- Corporate valuations
- Negotiation assistance

## Formation

We have skilled and experienced professionals in offices across the region. We can help you establish the most efficient business structure and maintain it over the long-term.

### Company formation:

- Single or multi-country structuring & incorporation
- Registered office address
- Resident director
- Company secretary
- Bank account opening
- Tax registration
- Business licenses
- Trademark registration
- Trust & foundation establishment
- Fund establishment

Whether you're an established multinational seeking to increase your footprint in Asia, or a new entity just setting out, our range of corporate services will seamlessly guide you from consultation to incorporation to maturity anywhere in the region.

## Governance

Stay compliant with local and global regulations and avoid hefty penalties. Through our corporate secretarial & compliance services, we will handle time-consuming and complex tasks.

### **Company changes:**

- Company secretary
- Resident director
- Company dissolution
- Amalgamation support
- Capitalisation table management

### **Custodial services:**

- Document authentication
- Process/local agent

## Accounting

Our accounting team is ready to help you. We'll take care of complete record keeping, so you can focus on running your business.

- Bookkeeping & transaction processing
- Financial reporting
- Management reporting
- Cash management
- Financial statements
- Audit assistance
- Outsourced CFO
- Banking & treasury
- Vendor payment support
- Sales framework assistance
- Accounting policies & procedures review
- Financial planning & analysis
- Consolidation reporting





## Tax

Our team will handle the whole process, from filing monthly statements to completing yearly income tax returns and transfer pricing obligations. If you're asked to carry out a tax audit, we'll make sure it goes ahead with the minimum of fuss.

### **Tax compliance:**

- Tax registration
- Corporate tax return
- Monthly tax reporting & filing
- Personal tax return

### **Tax advisory:**

- Corporate tax
- Transfer pricing
- Reorganisations & refinancing
- Profit extraction
- Tax (re)structuring

## Management

- Enterprise solutions (ERP & CRM)
- Trade & supply chain services

## Audit & assurance

Our statutory audits will ensure reliability for investors, government agencies, and the public. Our internal audit reports will evaluate and improve the effectiveness of risk management, control, and governance processes in your operations.

- Statutory audit
- Internal audit
- Corporate valuation
- Internal controls
- GAAP, SEC & IFRS compliance

## Legal

- Notary
- Legal document translation
- Power of attorney
- Contract drafting & review

Our local expertise combined with cross-border collaboration internally allows us to service your business at your convenience, with a level of professionalism you can trust.

## HR & payroll

Leave HR and payroll administration to us. Our payroll technology can be tailored to your business, making payroll headaches a thing of the past.

- Payroll outsourcing
- HR administration
- PEO/EOR
- Recruitment
- HR & payroll advisory

### Visas & work permits

- Work permit
- Business visa
- Investor visa
- Dependant visa
- Permanent residency

## Corporate advisory

Whether you're a start-up, SME or established multinational, our expert advisory services can help improve business performance throughout. By applying key metrics to develop strategy and plans, we'll reduce your overall business risks and costs.

- Corporate restructuring
- Corporate valuations
- M&A support
- IPO advisory
- Due diligence
- Venture capital support
- Tax advisory & planning
- Accounting advisory
- Virtual CFO
- Restructuring & insolvency
- Forensic accounting & litigation support
- Estate administration
- Valuation
- ESG advisory & reporting
- Communications, crisis & change management
- AML screening
- Funds advisory





# We'll find a way.

Here at Acclime, we pride ourselves on being able to find intelligent answers to the most complex administrative issues you'll come up against as your business expands throughout Asia. Solutions, not just advice.

Because all Acclime partners are stakeholders in our firm, we can make swift and effective decisions on your behalf, cutting through bureaucracy and guiding you forward.

## Staff with diverse professional backgrounds and experience.

As Acclime operates in 14 different markets in Asia, our teams are made up of both local & international staff with diverse professional backgrounds – from tax and accounting through financial due diligence to corporate secretarial.

Many of our local on-the-ground experts have international experience – they have been either educated overseas or have worked for professional corporate services firms abroad in their former careers. Likewise, our senior management comes from various disciplines and nationalities. This diversity of backgrounds and experience is reflected in our services provision.

**"A founding principle of Acclime is the long-term alignment of our stakeholders. The creation of a diverse and inclusive workforce is key to ensuring that Acclime remains an employer of choice."**

**Debby Davidson**  
Group COO/Co-Founder







## Lasting commitment.

We measure our performance by how well you succeed. At Acclime, we're beside you for the long-haul.

Our team's stability is core to our service: the people who'll be helping you are owner-managers, with a stake in our firm. This gives them a real interest in your long-term success, since growth for you will mean growth for us too.

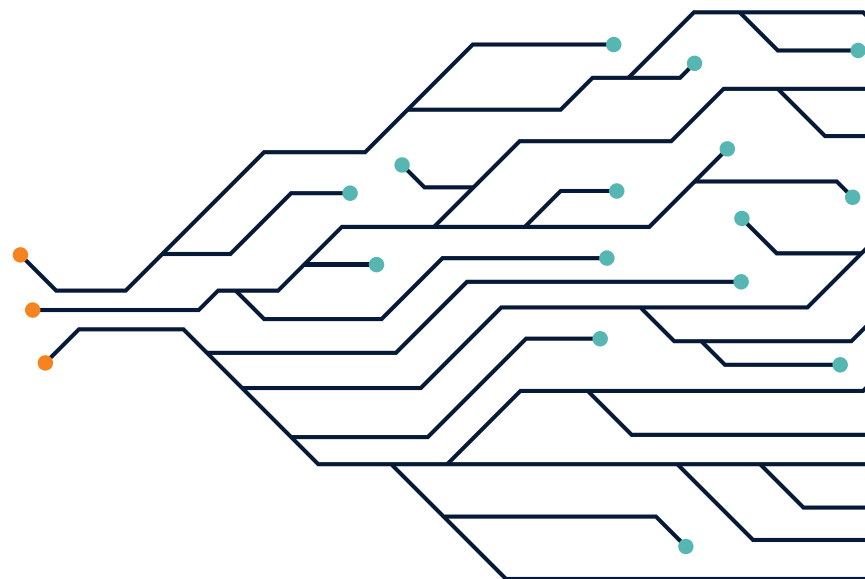
More than 50% of Acclime's new mandates are referrals from clients we're currently working with. That's testimony to our commitment to serve you.

## Experience seamless.

When you work with Acclime, you'll have your own relationship manager. He or she will coordinate all we do for you, across every market — seamlessly joining up our activities.

We can serve you in multiple markets under one contract, removing the need to repeat 'Know Your Customer' processes or be asked the same questions twice. You can combine everything under one invoice, or split costs by the market if you prefer.

You'll be able to review all your corporate documents in one secure place, checking progress at the touch of a button. We embrace new technology to cut out complexity, allowing you to focus on what matters.



# Effortless corporate management with Agility.



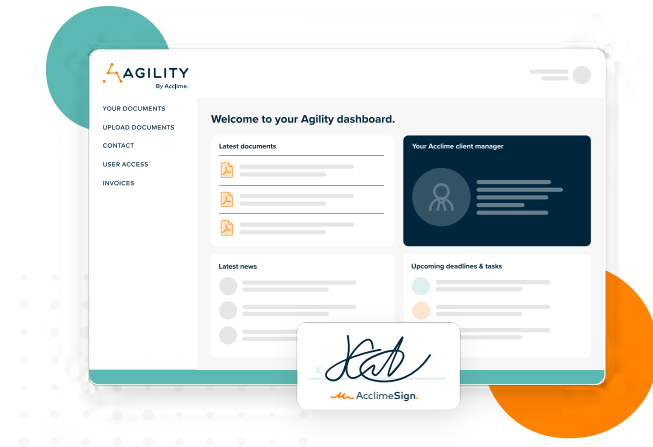
Agility is Acclime's complete cloud-based system to view, track and exchange documents for convenient collaboration, corporate administration and efficient management of every aspect of your corporate governance across Asia.

[www.acclime.com/agility](http://www.acclime.com/agility)

## Insightful dashboard to keep you in control

The Agility platform features an insightful and customisable dashboard to keep you in control. At a glance, you get a complete overview of the most important data & activities of all of your operations across Asia.

Your Agility dashboard will keep you updated on all the outstanding issues requiring your attention and connect you to your Acclime account managers to complete the tasks.



## Swift & secure access

Agility provides 24/7 access to your sensitive and important corporate data when you need it, from any device. It is fully built and maintained by Acclime and employs state-of-the-art encryption, security and privacy standards (ISO 27001).



## AcclimeSign

With Agility, you can view all the documents we have uploaded that require your signature. At the click of a button, you can add your e-signature and we can leap into action. AcclimeSign is easy to set up and always available in your Agility dashboard.

## CONTACT US

# Reach out to an expert.

If you have any queries regarding the information contained in this brochure or need assistance for your business, don't hesitate to contact:

### **Bram Voeten**

Regional Business Development Manager

Email: [b.voeten@acclime.com](mailto:b.voeten@acclime.com)

WhatsApp: +65 8065 9578

Or reach out to your nearest Acclime expert.

### **AUSTRALIA**

Zubair Bangash, Managing Director  
[infoaustralia@acclime.com](mailto:infoaustralia@acclime.com)

### **BELGIUM**

Edouard Leonet, Sr. Growth Manager  
[e.leonet@acclime.com](mailto:e.leonet@acclime.com)

### **CAMBODIA**

SAN Rithy, Managing Partner  
[infocambodia@acclime.com](mailto:infocambodia@acclime.com)

### **CHINA MAINLAND**

Alfred Gan, Managing Director  
[infochina@acclime.com](mailto:infochina@acclime.com)

### **HONG KONG**

Miguel Latorre, Managing Director  
[infohongkong@acclime.com](mailto:infohongkong@acclime.com)

### **INDIA**

Yajna Prakash, Managing Partner  
[infoindia@acclime.com](mailto:infoindia@acclime.com)

### **INDONESIA**

Karim Saleh, Managing Partner  
[infoindonesia@acclime.com](mailto:infoindonesia@acclime.com)

### **MAURITIUS**

Dharmesh Naik, Managing Partner  
[global@acclime.com](mailto:global@acclime.com)

### **MALAYSIA**

Alicia Tiong, Managing Partner  
[infomalaysia@acclime.com](mailto:infomalaysia@acclime.com)

### **NEW ZEALAND**

Randolph van der Burgh, Director  
[infonz@acclime.com](mailto:infonz@acclime.com)

### **PHILIPPINES**

Marla Aquino-Battalones, Partner  
[infophilippines@acclime.com](mailto:infophilippines@acclime.com)

### **SAMOA**

Bart Dekker, Managing Partner  
[global@acclime.com](mailto:global@acclime.com)

### **SEYCHELLES**

Dharmesh Naik, Managing Partner  
[global@acclime.com](mailto:global@acclime.com)

### **SINGAPORE**

Thomas Chan, Managing Director  
[infosingapore@acclime.com](mailto:infosingapore@acclime.com)

### **TAIWAN**

Nadine Feng, General Manager  
[global@acclime.com](mailto:global@acclime.com)

### **THAILAND**

Joshua Konechny, Managing Director  
[infothailand@acclime.com](mailto:infothailand@acclime.com)

### **UAE**

Rajiv Kumar Singh, Managing Director  
[global@acclime.com](mailto:global@acclime.com)

### **UK**

Nikki Le-Grys, Regional Director  
[n.legrys@acclime.com](mailto:n.legrys@acclime.com)

### **USA**

Edmund Novak, Managing Director  
[infousa@acclime.com](mailto:infousa@acclime.com)

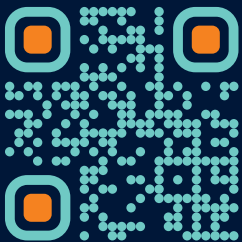
### **VIETNAM**

Rizwan Khan, Managing Partner  
[vietnam@acclime.com](mailto:vietnam@acclime.com)

[www.acclime.com/locations/](http://www.acclime.com/locations/)

# Asia's leading corporate and advisory services provider.

At Acclime, we have a genuine, on-the-ground presence in all of Asia's hardest-to-navigate markets. By staying on top of regulatory changes, we help our clients manage local governmental and administrative compliance issues quickly, conveniently and with a minimum of fuss.



[acclime.com](https://acclime.com)

ACCLIME.