



# The Future of Offsite Construction

**SPECIALISTS IN LIGHT GAUGE STEEL FRAMING**

# REMAGIN: LEADERS IN COMPLETE, SINGLE SOURCE OFFSITE SOLUTIONS

**INTRODUCING REMAGIN. A GAME-CHANGING SOLUTION THAT ADDRESSES THE CHALLENGES OF TRADITIONAL CONSTRUCTION.**

Market leaders in the UK and Ireland, and operating throughout continental Europe, we are offsite construction manufacturing experts specialising in light gauge steel solutions.

Our portfolio includes light gauge steel frames and panels (LGSF), developed to be fixed together to provide full, loadbearing building structures; and steel frame systems (SFS) for the external building envelope.

We help you build better, quicker and more sustainably.



# And Part of Etex Group

## A GLOBAL LEADER IN LIGHTWEIGHT CONSTRUCTION MATERIALS

With a turnover of c. €4 billion, Etex is a global leader in the development and manufacturing of lightweight construction materials such as plasterboard, fibre cement, passive fire protection and insulation.

As an integral part of Etex, this means Remagin is uniquely positioned to leverage Etex's diverse product portfolio and application expertise, integrating systems that provide innovative solutions for our customers.

**etex** inspiring ways  
of living

 **siniat**

**PLADUR®**

  
**URSA**

**FSi** **Promat**

 **EQUITONE**

**CEDRAL**

# What is Light Gauge Steel?

## STRENGTH, SUSTAINABILITY AND SAFETY BUILT IN

Cold formed profiles, made from light gauge steel, are at the heart of all our solutions. The profiles are rolled and assembled into frames and panels in our offsite factories to form building elements such as internal walls or partitions, external façades and floors. These elements are then transported to site and fixed together to comprise the load bearing building structure.

Light gauge steel itself is a sustainable material which, due to its very high strength to weight ratio, extracts and consumes considerably fewer resources than traditional construction; it also consists of a high proportion of recycled material. With expanding capacity and availability of green steel, there are also increasing opportunities to use material that has significantly lower levels of embedded carbon, and higher recycled content.

Due to the inherent precision of our manufacturing processes, very little, if any, waste is generated either in our factories or onsite during installation. And at the end of the building lifecycle, the steel can be infinitely recycled through well established recycling streams; with good planning and design, there is even the possibility of demounting and reusing several elements of the structure.

Finally, light gauge steel framing is a very safe method of building – being non-combustible, light gauge steel exhibits excellent fire resistance characteristics, and does not add to the fire load of a building.





# Our Solutions

## Light Gauge Steel Frame Loadbearing Solutions

Loadbearing light gauge steel frames suitable for buildings and developments up to fifteen storeys. With in-house design, manufacturing and installation support, Remagin offers a single source to site solution.



## Steel Frame Systems for External Walls

We supply a range of non-loadbearing solutions to suit specific project requirements, including infill or pre-assembled frame (PAF). PPAF offers customers rapid onsite build where programmes are challenging or time is of the essence.





# LOW-RISE

An architectural rendering of a modern low-rise building. The building features a prominent timber frame structure with vertical and horizontal beams, set against a dark grey gabled roof. The lower portion of the building is constructed from light-colored bricks. Large glass windows are integrated into the timber frame, providing a view into the interior. In the foreground, there is a paved sidewalk, a green hedge, and a small lawn. A few people are shown walking on the sidewalk, and a car is parked in the background. The sky is blue with scattered white clouds.

## BENEFITS

- > Efficient 89mm frame
- > Typically steel joisted cassette floors
- > Fast, efficient and sustainable
- > Single source to site solution
- > Suitable for housing and developments up to three to four storeys
- > 30-60 minute fire resistance





# Case Studies



## HAWKES ROAD

### OVERVIEW

Client: OBR Group

Location: Bishopstown Road, Cork

40 houses

Programme: Six months

87,500 linear metres stud & track rolled.



## HEATON HOUSE

### OVERVIEW

Client: Kavannagh Construction

Location: Birmingham

14 townhouses and 42 apartments

Programme: 23 weeks

2,424 m<sup>2</sup> gross internal floor area (GIFA)



## CLOTHIER MANOR

### OVERVIEW

Client: McCarthy Stone

Location: Gosforth

The residence comprised of 23 one bedroom- and 20 two bedroom apartments

12 week programme

1,765 linear metres of LGSF wall panels over 3 storeys; 3,510 m<sup>2</sup> of floor decking and 4 flights of stairs installed.



# MID-RISE

A photograph of a modern mid-rise building at dusk. The building features a glass facade and a dark, slatted metal screen. The sky is a deep blue, and the building's interior lights are visible through the glass. The text 'MID-RISE' is overlaid in large white letters on the left side of the image.

## BENEFITS

- > Robust 100mm frame
- > Unique decking profile spanning up to 5.5m
- > Steel stairs & lift cores
- > Suitable for mid-high rise up to 15 storeys
- > 60-120 minute fire resistance



# Case Studies



## SANDY PARK

### OVERVIEW

Client: Sandy Park

5-star, nine storey Marriott Hotel

Location: Exeter

Solution: Four levels of hot rolled steel transfer structure with Remagin's own SFS infill, five levels of Remagin Light Gauge Steel Framing with 180mm decking throughout the whole scheme, including provision of roofing, lift / stair cores and staircases.



## CLONSKEAGH APARTMENTS

### OVERVIEW

Client: Axis Construction

Five storey Apartment

Location: Dublin Ireland

Solution: loadbearing LGS walls

Superstructure site programme: 14 weeks

57,876 linear metres of stud rolled for this project



## HULL UNIVERSITY

### OVERVIEW

Client: VINCI

1,462 student apartments across 12 blocks

Location: Hull

Solution: Remagin Light Gauge Steel frame superstructure utilising scaffoldless edge protection.



# SFS SYSTEMS



## BENEFITS

- Suitable for external walls for reinforced concrete or hot rolled steel frame buildings
- Supplied as infill stud and track, Thruwall or pre-assembled frames (PAF)
- Thruwall and PAF fully tested with up to 120 minutes fire resistance
- Enables fast track completion of the external wall





# Case Studies



## CASTLETREASURE BAYLEY

### OVERVIEW

Client: Cairn Homes

Location: Cork Ireland

Solution: Five storey apartment, Prepanelised factory insulated infill panels

Superstructure site programme: four weeks  
1217m<sup>2</sup> external wall panels.



## STOCKPORT INTERCHANGE

### OVERVIEW

Client: Red Systems

Location: Stockport

Solution: 6157m<sup>2</sup> infill SFS

196 apartments constructed as part of new state-of-the-art transport interchange.



## WEMBLEY

### OVERVIEW

Client: Premier Inn

Location: Wembley

Solution: SFS Infill

312 bed Premier Inn formed part of the Wembley regeneration project and the surrounding areas.

# Purposeful Performance

## INTEGRATED SOLUTIONS



### Performance

High quality, high performance. Delivering what is important to you, from beginning to end



### Sustainability

We are committed to supporting you to build for a more sustainable future



### Innovation

Applying our expertise and resource to build for success.



# Innovation

## Innovation

Innovation is in our DNA. Being part of the Etex group, which invests over €30 million per year on R&D focused on lightweight building materials and construction methods, means we have the resources, expertise and technologies to drive innovation forward.

At Remagin, we understand that construction projects can be complex and challenging in any number of aspects, technical and operational. Working with our customers, we have already developed a range of solutions which address those challenges in practical, safe, sustainable and time and cost-effective ways.

And the story doesn't stop there. Leveraging our position within Etex, bringing all of its expertise and technologies together, we will continue to innovate to address your challenges and provide you with ever increasing value.



# Testing

## HELPING YOU DESIGN AND BUILD WITH CERTAINTY IN MIND

Etex has seven Innovation and Technology Centres across the group, where we have our own fire, acoustic, structural, weathering and thermal testing equipment and facilities.

We are continually looking at ways to make buildings safer and more comfortable for occupiers, and eliminate the uncertainty from decision making for specifiers.

To achieve this, our full-scale testing regimes analyse the performance of all the products within a system (e.g. steel frame, boards, insulation) working together to see how they interact in real world conditions, such as under fire conditions or when exposed to wind and rain.

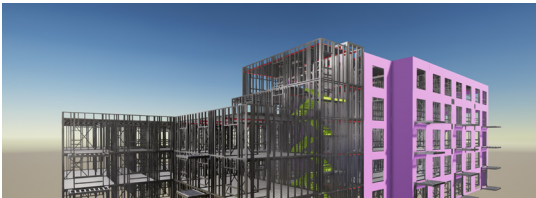






# Testing

## STRUCTURAL, THERMAL, FIRE & ACOUSTICS



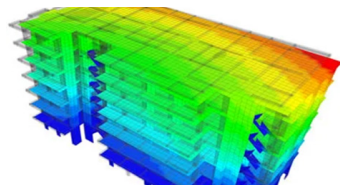
- > **Structural strength and design** – software includes Autodesk Robot Structural Designer, Tekla Structural Designer



- > **Fire** – we have our own fire test labs and work extensively with third parties for independent accreditation



- > **Acoustic testing and simulation** – over 40 wall and floor configurations tested at AIRO, and we have our own facility



- > **Thermal** – We can also provide thermal modelling, u-value calculations and condensation risk assessments

# In-House Design Capabilities

## OPTIMISED SOLUTIONS FOR YOU

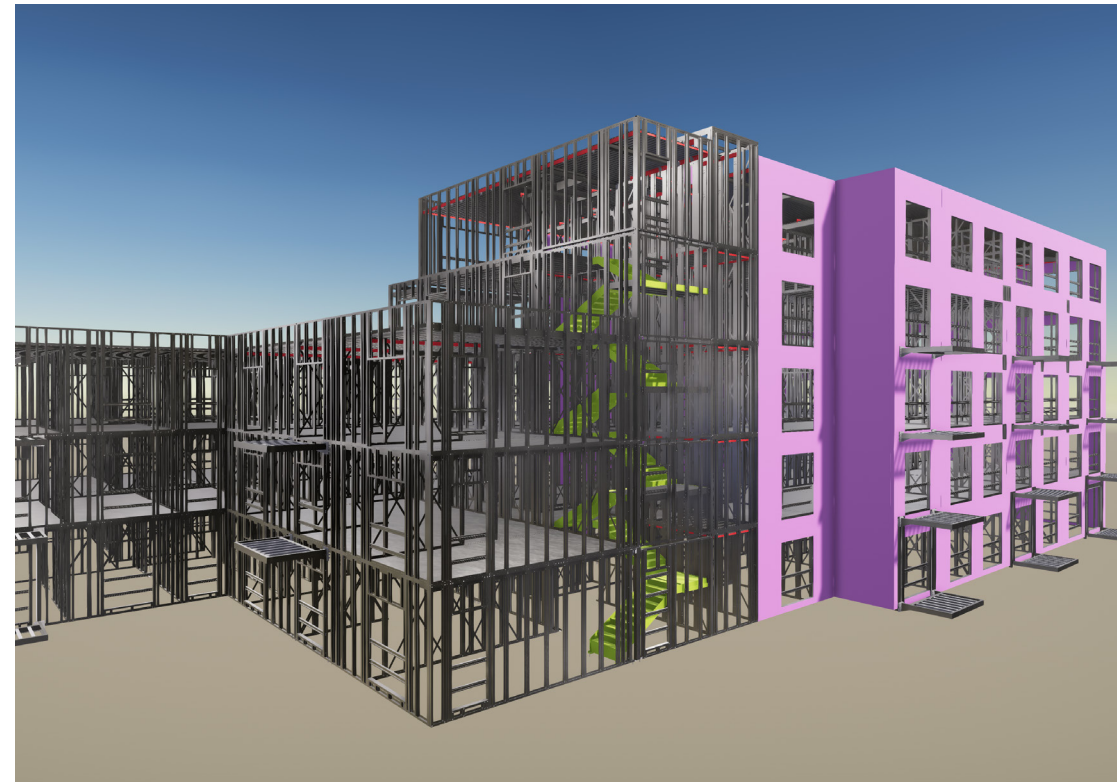
Our experienced design offices across the UK and Ireland have the expertise and know-how to bring your vision to reality with performance, innovation and sustainability at heart.

Using the latest, BIM ready software, we design the most appropriate and efficient way to build the superstructure of your building, ensuring that it is fully compliant.

Our technical design team are highly qualified and work in collaboration with your design team to establish the most effective, cost-efficient and value-adding design solutions, complete with all necessary performance data and documentation.

We can take existing architectural designs to create an efficient and optimal solution.

**FOR A BETTER OPPORTUNITY TO ENHANCE YOUR RETURN ON INVESTMENT, EARLY ENGAGEMENT IS KEY.**





# Controlled Manufacturing

**PROVIDING YOU WITH PRECISION, QUALITY & CONSISTENCY**

With three state-of-the-art manufacturing facilities in the UK & Ireland, we are able to deliver exceptional quality and efficiency on every project.

Once the design is approved, the specifications are translated into product components in our software and transferred directly to our manufacturing equipment, ensuring absolute accuracy from design to production of every cold-rolled component section and profile.

Our products are manufactured to very tight tolerances in controlled factory conditions, ensuring we are able to monitor precision, accuracy and quality continuously.

With each component having its own unique label, our process offers full traceability.



# Remagin in Europe

## WHERE WE OPERATE

Our team operate across the UK and Europe. We are proud to have three state-of-the-art manufacturing facilities, and a specialist Design & Engineering office.

If you would like to know more about how we can help you to build your project quicker, better and more sustainably, please contact us by email at:  
[remagin@etexgroup.com](mailto:remagin@etexgroup.com)



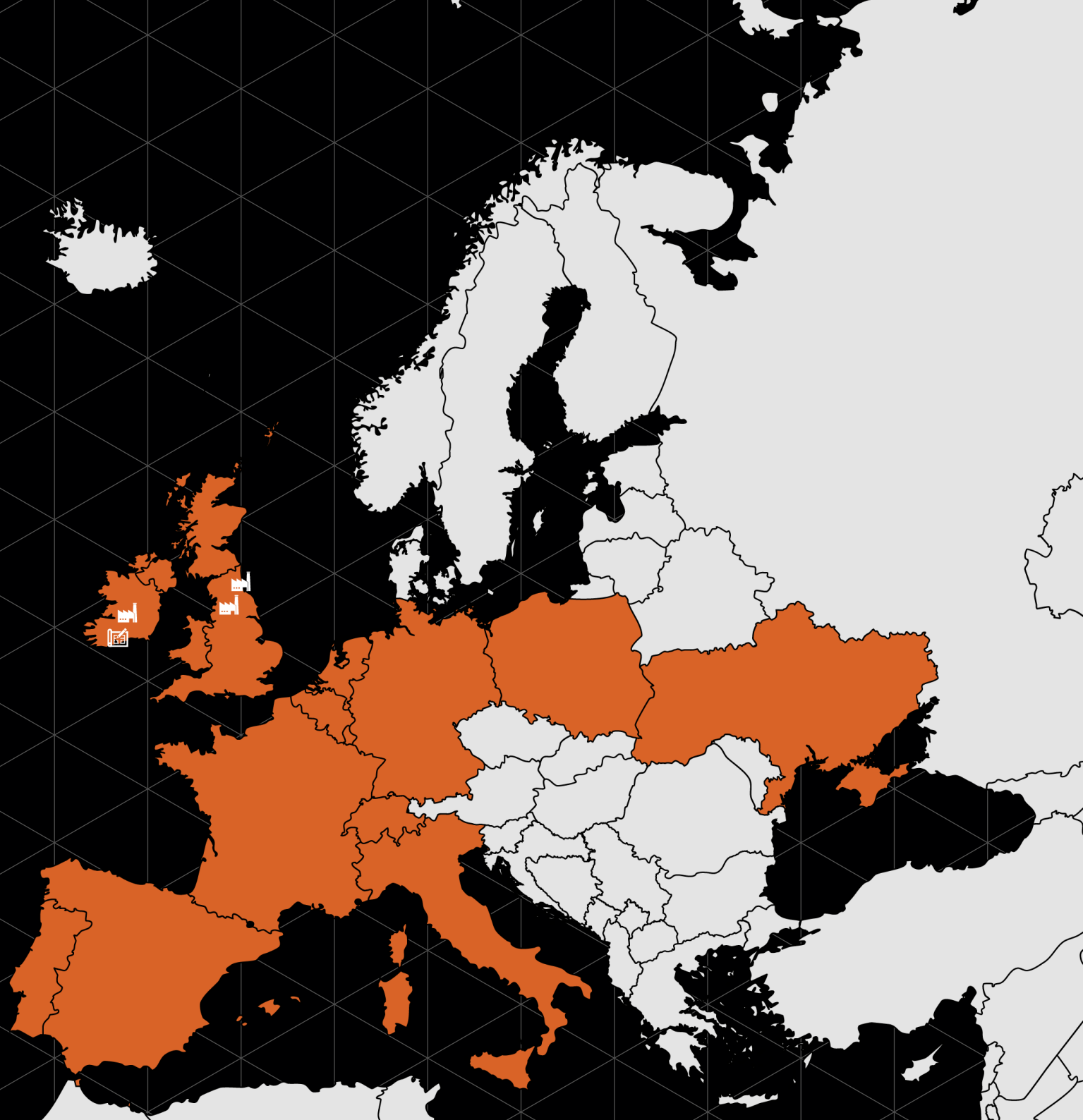
Manufacturing Facility



Design & Engineering Office



Sales Coverage





# REMAGIN

THE FUTURE OF OFFSITE CONSTRUCTION

## REMAGIN CONTINENTAL EUROPE OFFICE

Etex New Ways nv  
Brussels National Airport  
Passport Building, 1K  
1930 Zaventem  
Belgium

### E-MAIL

[remagin@etexgroup.com](mailto:remagin@etexgroup.com)

### WEBSITE

[www.remagin.world](http://www.remagin.world)

