



Advanced Security for Data and People

You can **now** activate your
Unified Health ID,
receive **notifications** to keep your
Unified Health Index up-to-date,
share **digital twins** for research,
request **assistance** and **be located** in **emergencies**
via SMS and **Bluetooth** devices.





*A new paradigm: the Unified Health ID**

Experience the impact of creating
your own worldwide Unified Health ID*
to be attended to by emergency services and
clinicians anywhere.

**Patent US 11,636,776*





Collaborative ***Shared Data Space***

Use a secure bridge to **receive notifications** from patient portals to your **Unified Health ID***, enabling your Unified Health Index:
Have your data ready, anytime!

**Patent US 11,636,776*





Real-time healthcare *data updates*

Your Unified Health Index works like a book index, automatically updating links to new pages in different sections, sent from distinct patient portals to your Unified Health ID* or associated IDs.

**Patent US 11,636,776*





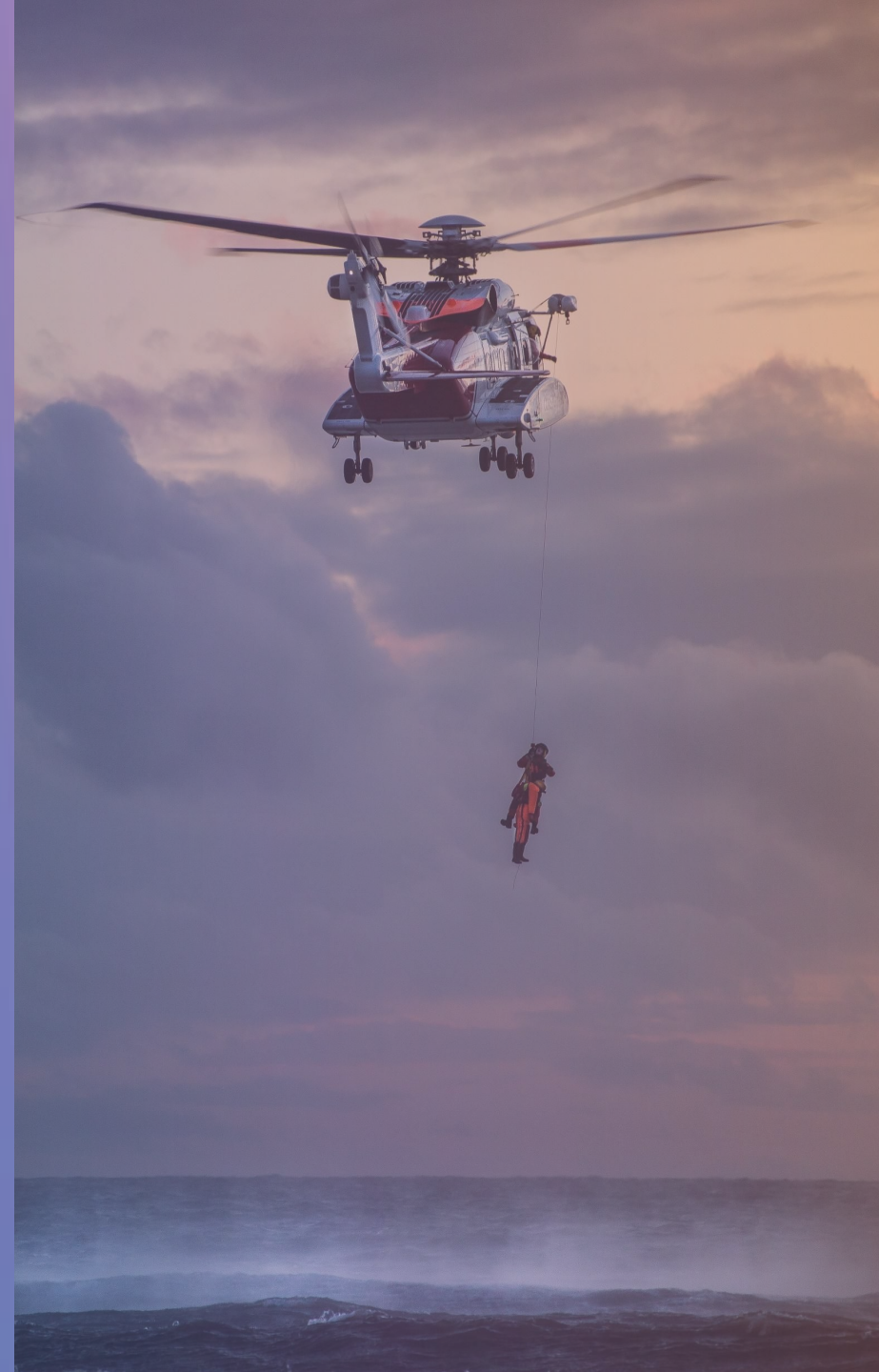
Associate your Identifiers and Devices

Link any other identifier or device
to your Unified Health ID*.**

**Authorize being located by rescue services
via location devices** (Bluetooth or others)
in emergency situations.**

**Patent US 11,636,776*

***QuantumPrime is used for generating anonym device identifiers (digital twin).*





Receive Trusted Data and Request Assistance

Get notifications and information
from **trusted sources** (to avoid fake news).
Send **service requests to emergency services**
including your **Unified Health ID***, device ID**,
severity and type of emergency.

**Patent US 11,636,776*

***QuantumPrime is used for generating anonym device identifiers (digital twin).*





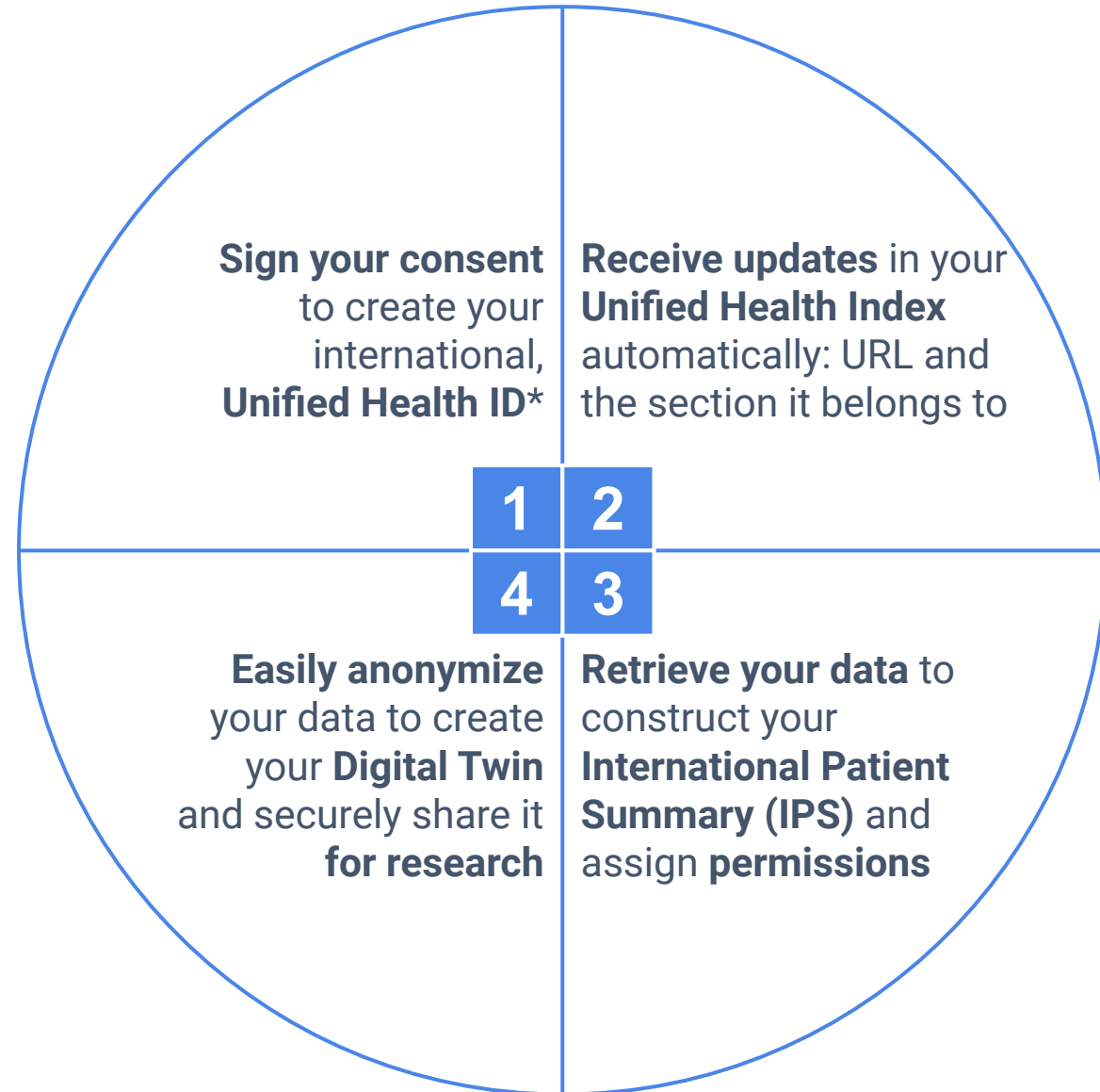
Security for the New Digital Era

Unified Health Index: create your International Health Booklet



A new paradigm:

- Create your **Unified Health ID***
- Associate **other identifiers**
- Enable your **Unified Health Index**
- Receive notifications about your data!



*Patent US 11,636,776

Registering organizations and employee roles on Blockchain



The **fundamental data communication tool***

- **Prevent fraud:** verified identities and messages
- **Optimize time** in medical consultations
- **Reduce diagnostic errors** and readmissions
- Secure data and messages: **post-quantum algorithms**



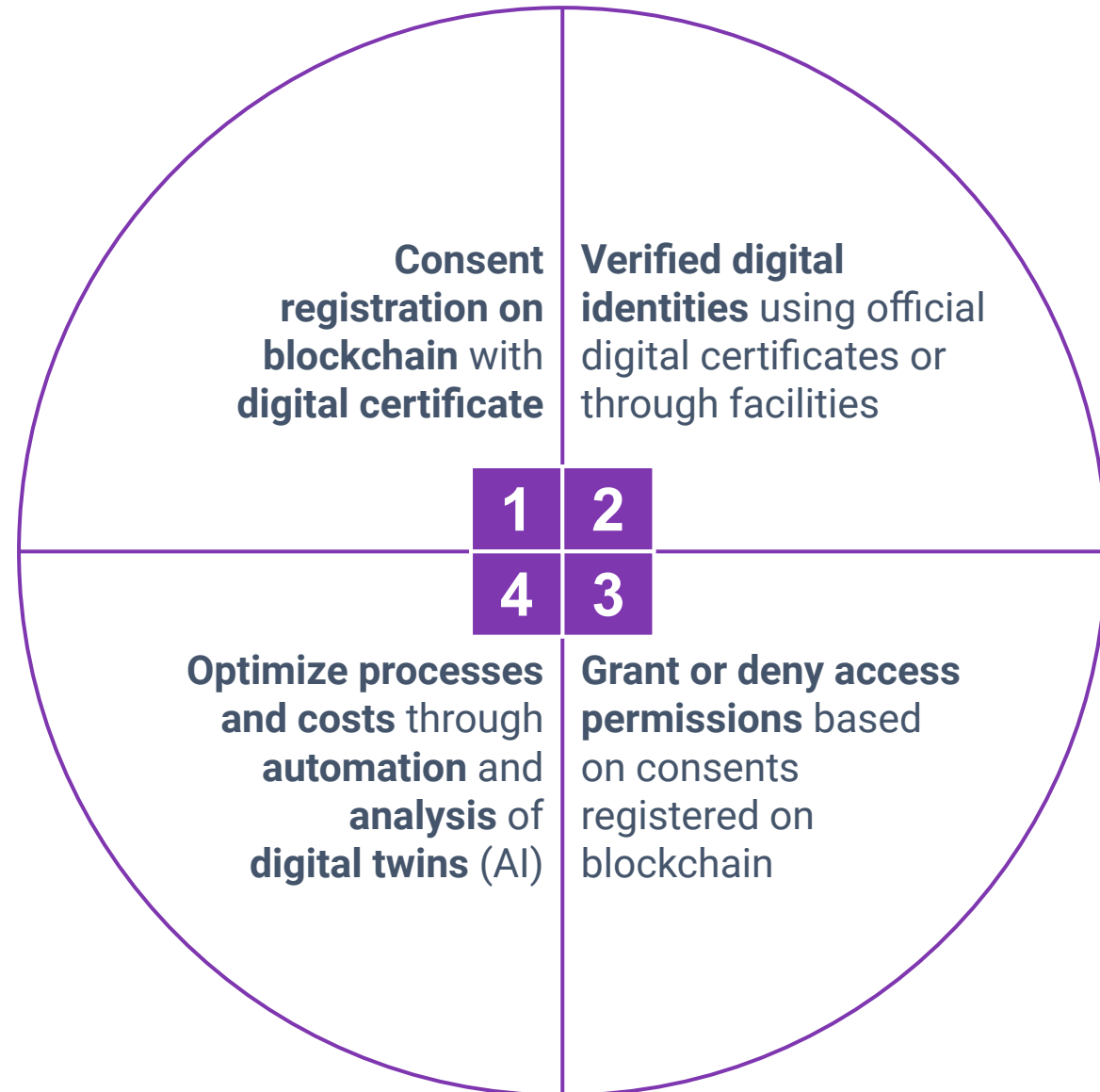
**Patent US 11,636,776*

Verify consents and documents, coverage and history



Blockchain: **public notary for security and trust***

- Secure certification of data and consents
- Permissions based on consents
- Automation: auditable and secure records
- Reduces administrative burden and operational costs



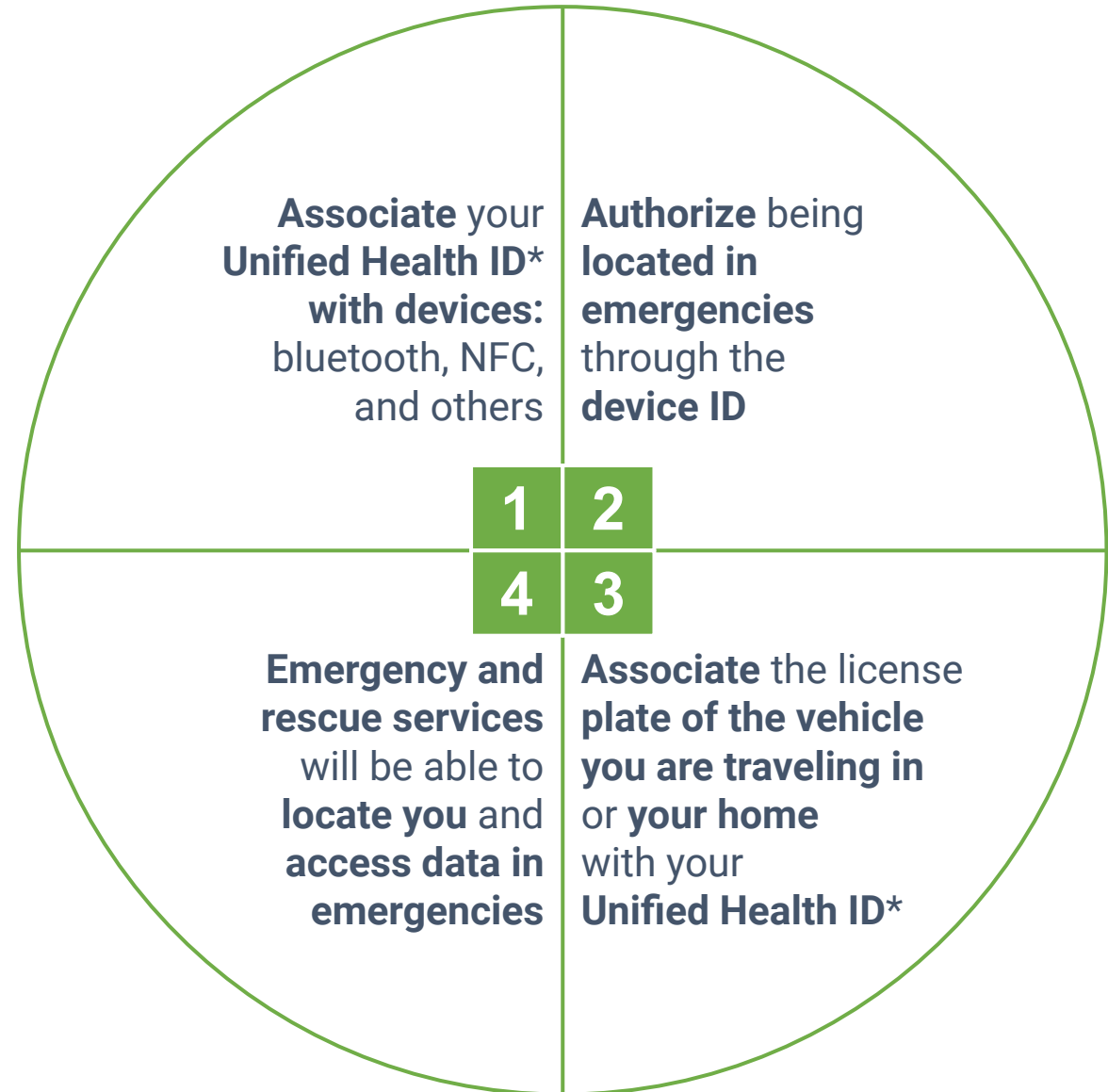
*Patent US 11,636,776

Localization in emergencies and rescues



Devices and permissions for emergency cases:

- **Rescue request via SMS:** Unified Health ID*, device ID, coordinates, type of emergency, etc.
- **Localization** via **Bluetooth** devices and others: disoriented individuals, natural disasters, etc.
- **Access to contacts and data for emergencies:** allergies (e.g., penicillin, latex), pacemakers, etc



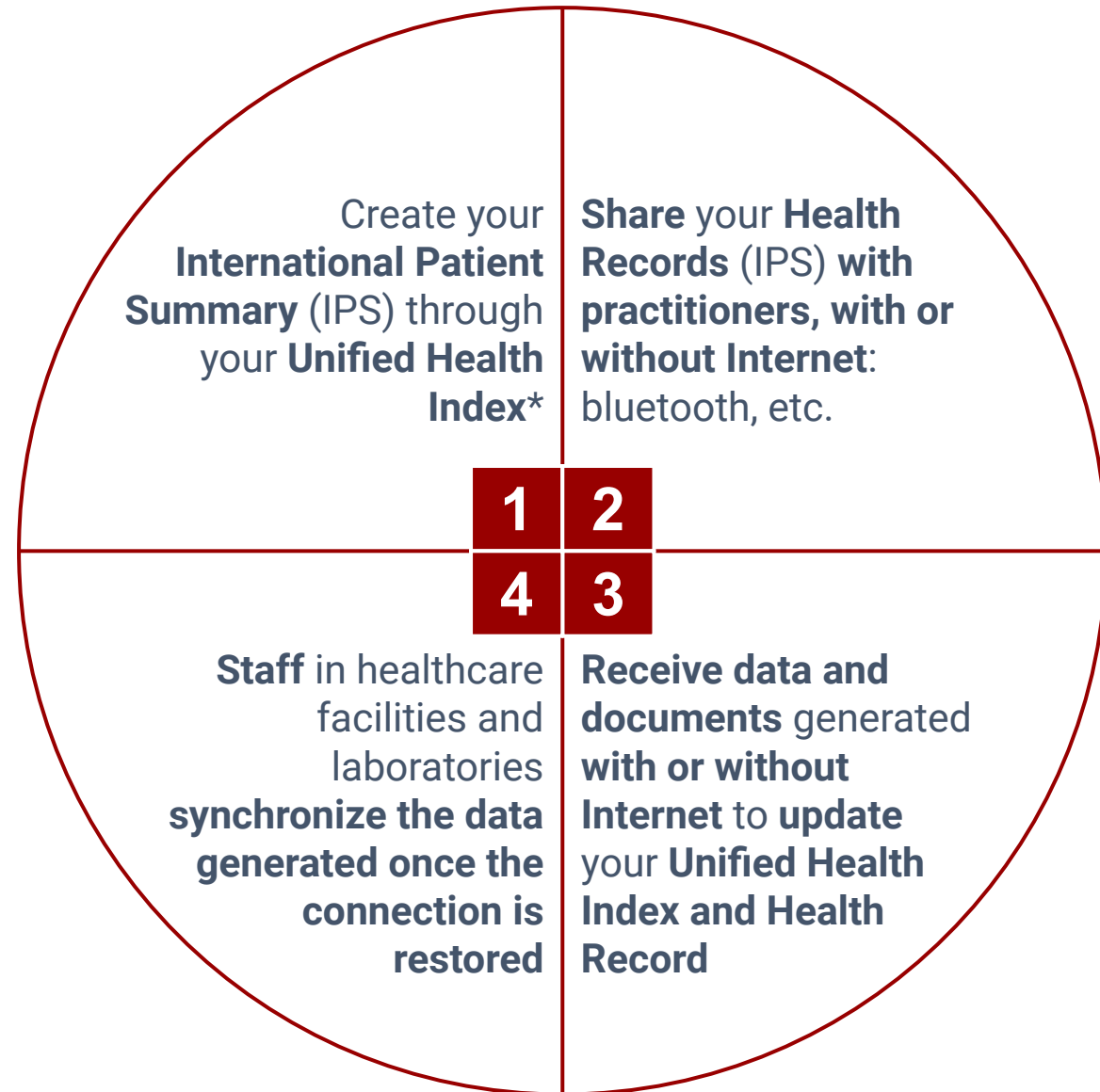
Improve resilience against system failures and attacks



Create **cyber-resilient health ecosystems** as a **key and strategic sector** for the defense of countries.

- **Resilience:** The patient creates their International Health Record and shares it with medical services even without the Internet, using Bluetooth, etc.
- **Protection against disruptions:** Healthcare professionals create new documents and share them via Bluetooth, printed QR codes, or other means.
- **Recovery:** Patients and professionals synchronize the data once the connection is restored.

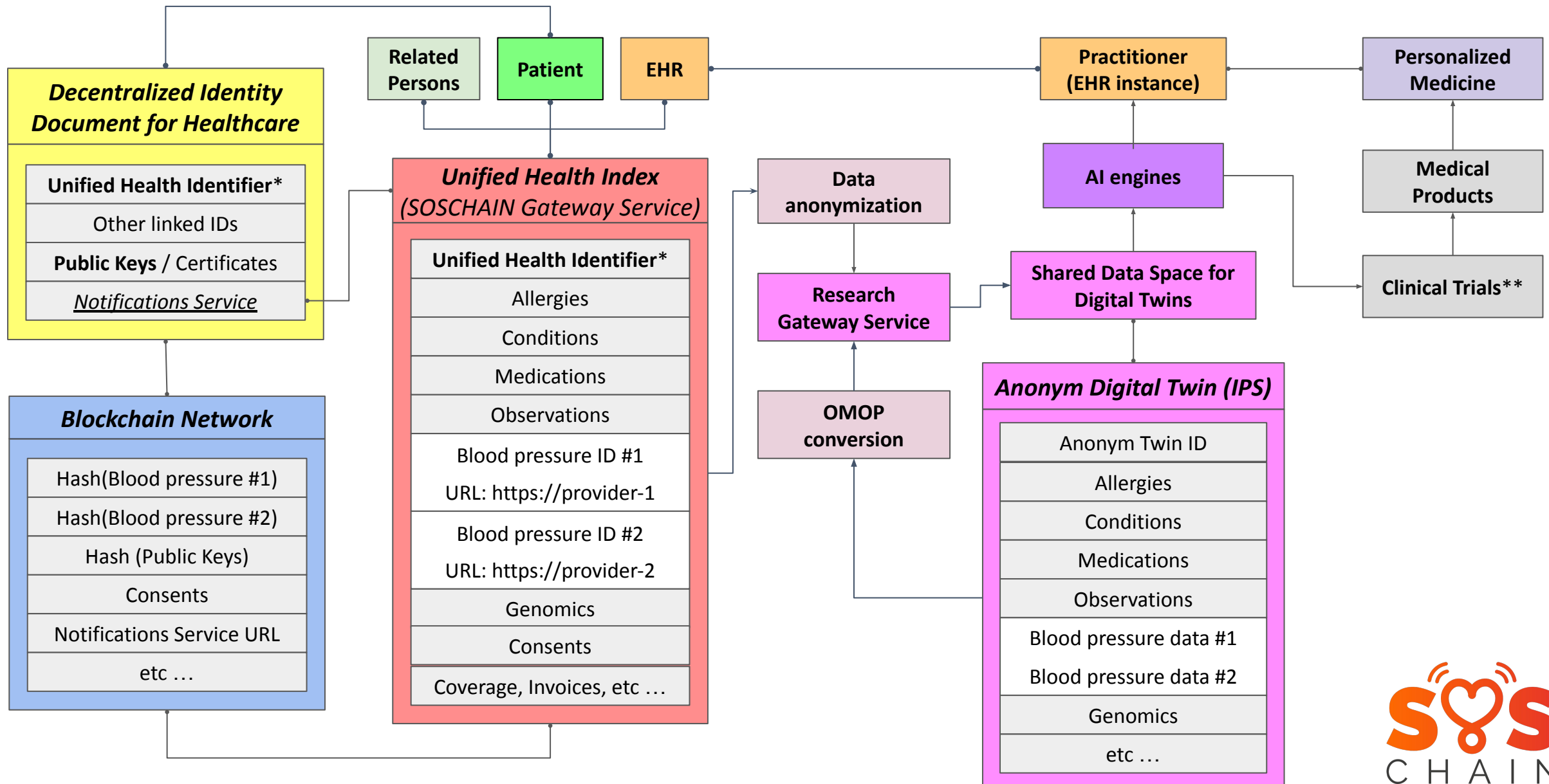
**Patent US 11,636,776*





Resilient Architecture and
Security by Design

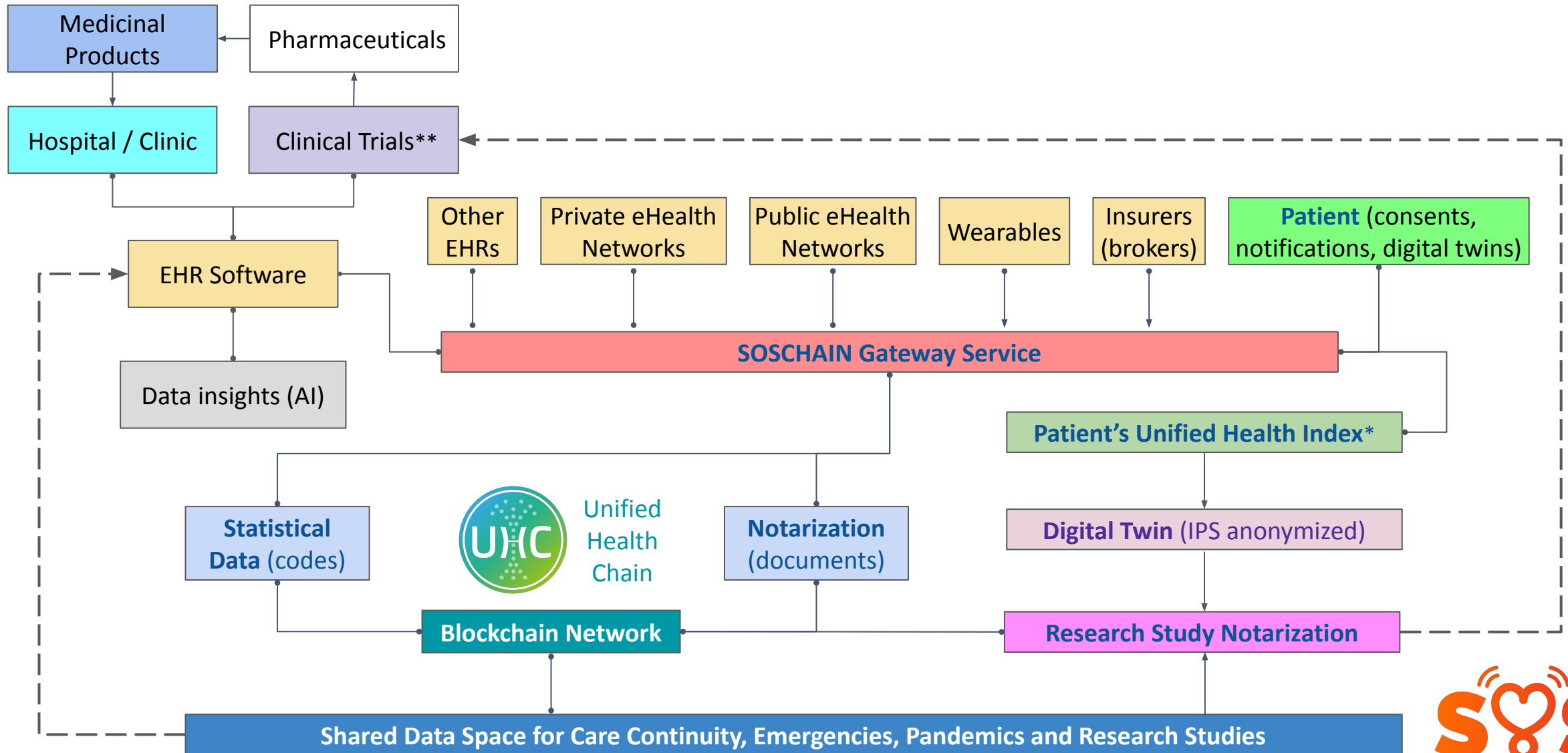
Diagram for the Unified Health Index and Digital Twins



*Patent US 11,636,776; **Patent US 12,057,202



SOSCHAIN Shared Data Space with Unified Health Index



Introduction to Cyber Attacks Types

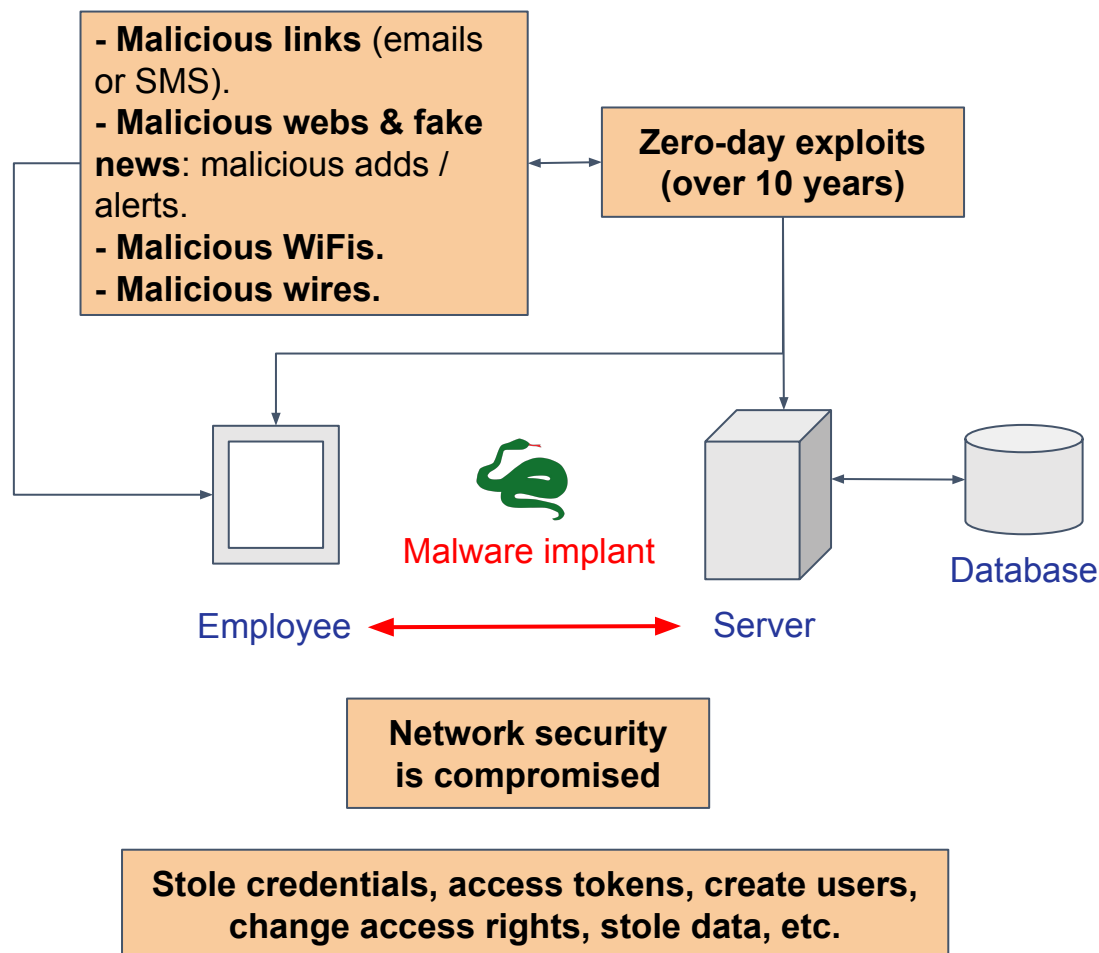
SUMMARY

The Snake implant is considered the most sophisticated cyber espionage tool



America's Cyber Defense Agency

NATIONAL COORDINATOR FOR CRITICAL INFRASTRUCTURE SECURITY AND RESILIENCE

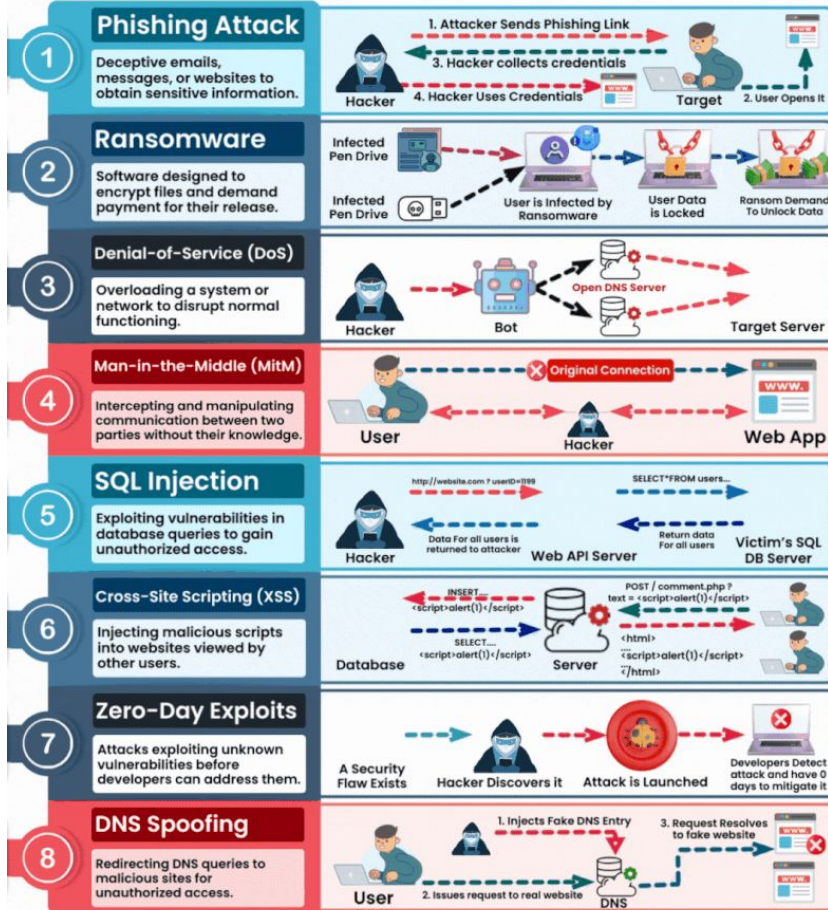


Brij Kishore Pandey



Save For Later

Top 8 Types of Cyber Attacks



QuantumPrime for Cybersecurity

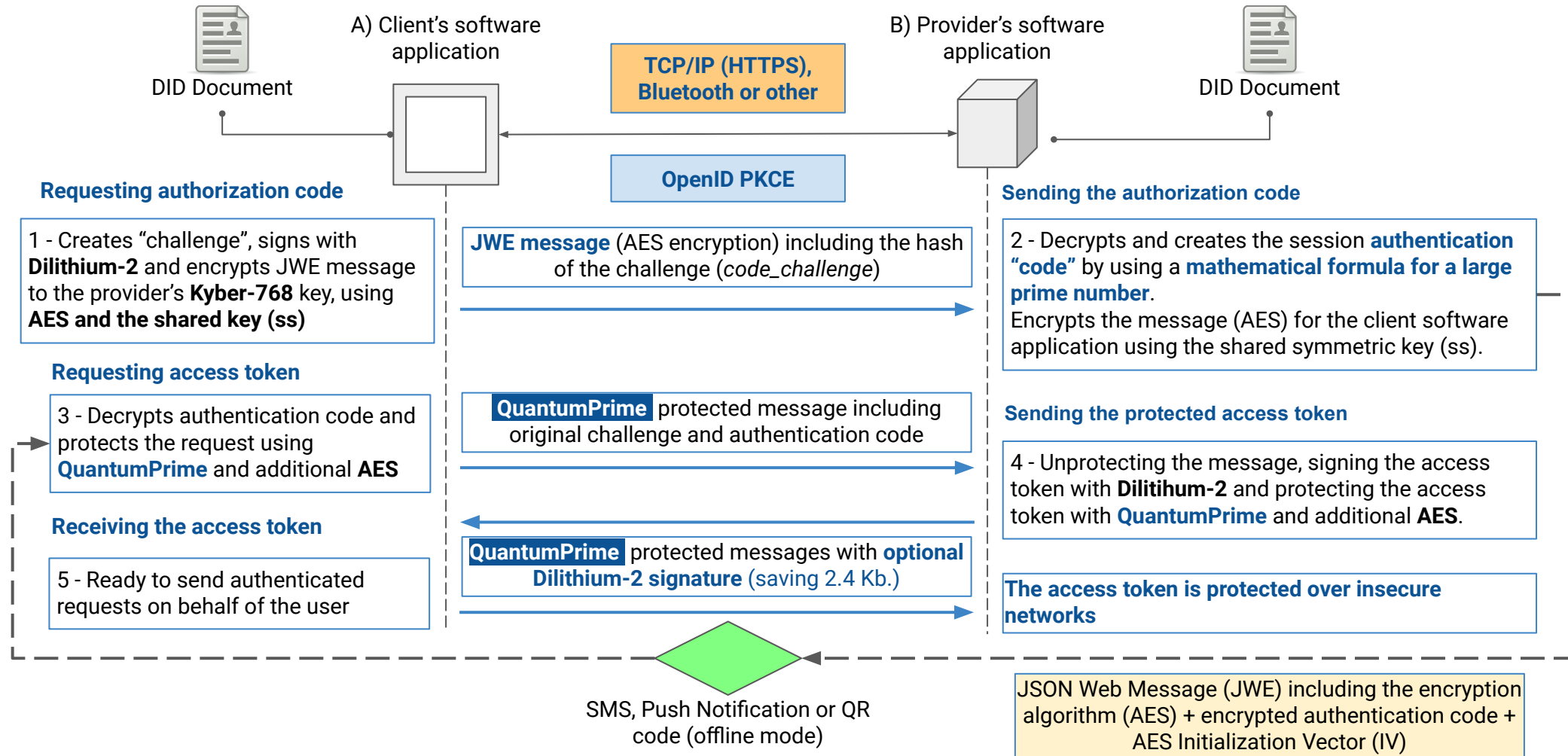
Prime numbers as "Lego" blocks to protect confidential information

- A) **Formula:** $observable = base \pm E$, where **base** is a prime number, and **E** is a product of primes (Euclid's Theorem).
- B) **Recursion:** applying the formula to each prime factor (up to a certain depth) allows for an **increase in complexity** (parts).
- C) **Key:** which primes are used as **base**, in what **order of preference**, and the **level of recursion** applied.
1. **Easy integration:** sending mathematical expressions as confirmation codes **when performing operations** (email or SMS).
 - 1.1. **Example:** the mathematical expression " $2^{2281}-1$ " is encoded as "9RdfrxM5U9N" and generates a **large prime** (243 bytes).
 2. **Anonymization:** the formula produces a unique hash of the information, which is used as a public ID of the private data.
 - 2.1. **Security:** it is not possible to guess the key from a generated hash (prime numbers, order and recursion level).
 - 2.2. **Example:** Generation of **unique identifiers** (e.g., for each day or transaction), as an **extra layer of security** when protecting sensitive data, for example: **account number for payments, identification document, mobile phone number, device identifier** such as a **bluetooth device**, a **vehicle identification number** (VIN) for private vehicles, ambulances, military vehicles, etc.
- > Using as preferred bases=**[1021, 23]** and recursion=**1**: $6543210 = 1021 + 23 \times 61 \times 4663$
ID (SHA3-384): 0x4f03d5c44069aee9e16e83ec011c3f2d2d098ffe1735ad6ee6da0f8e40090d5a8a6db120bea86d391dfc16f74c60bfab
- > Using as preferred bases=**[1021, 23]** and recursion=**2**: $6543210 = 1021 + 23 \times (23 + 2 \times 19) \times (1021 + 2 \times 3 \times 607)$
ID (SHA3-384): 0xd49ebf3cb989bbec7b5180472d6a10c01f94caa6a5011c8367d8ab4732500ef6252d40f286f93988ca0b721351c10f75
- > Using as preferred bases=**[1021, 13]** and recursion=**2**: $6543210 = 1021 + (13 + 2 \times 5) \times (13 + 2^4 \times 3) \times (1021 + 2 \times 3 \times 607)$
ID (SHA3-384): 0xf12f876246224f1336325fe874ba68a504b9bc1b85431c2c76736d241a600d877f8038ed14825c82b057ea02b05bed7c

Quantum-Resistant Security for the New Digital Era



Secure login and data exchange for HTTP and Bluetooth protocols
by improved data protection mechanism (based on the Financial API Security Profile)



About Us

Fernando Latorre

CEO, CTO, co-founder

Cryptography specialist with experience in intellectual property protection and expertise in blockchain, healthtech, OpenID and decentralized identity technologies

Nuria Sala

COO, co-founder

Business and management experience, MBA, graduate in Nursing, and diploma in Health.

DevOps

Development and maintenance of software and computer systems, agile and high-quality software methodology.

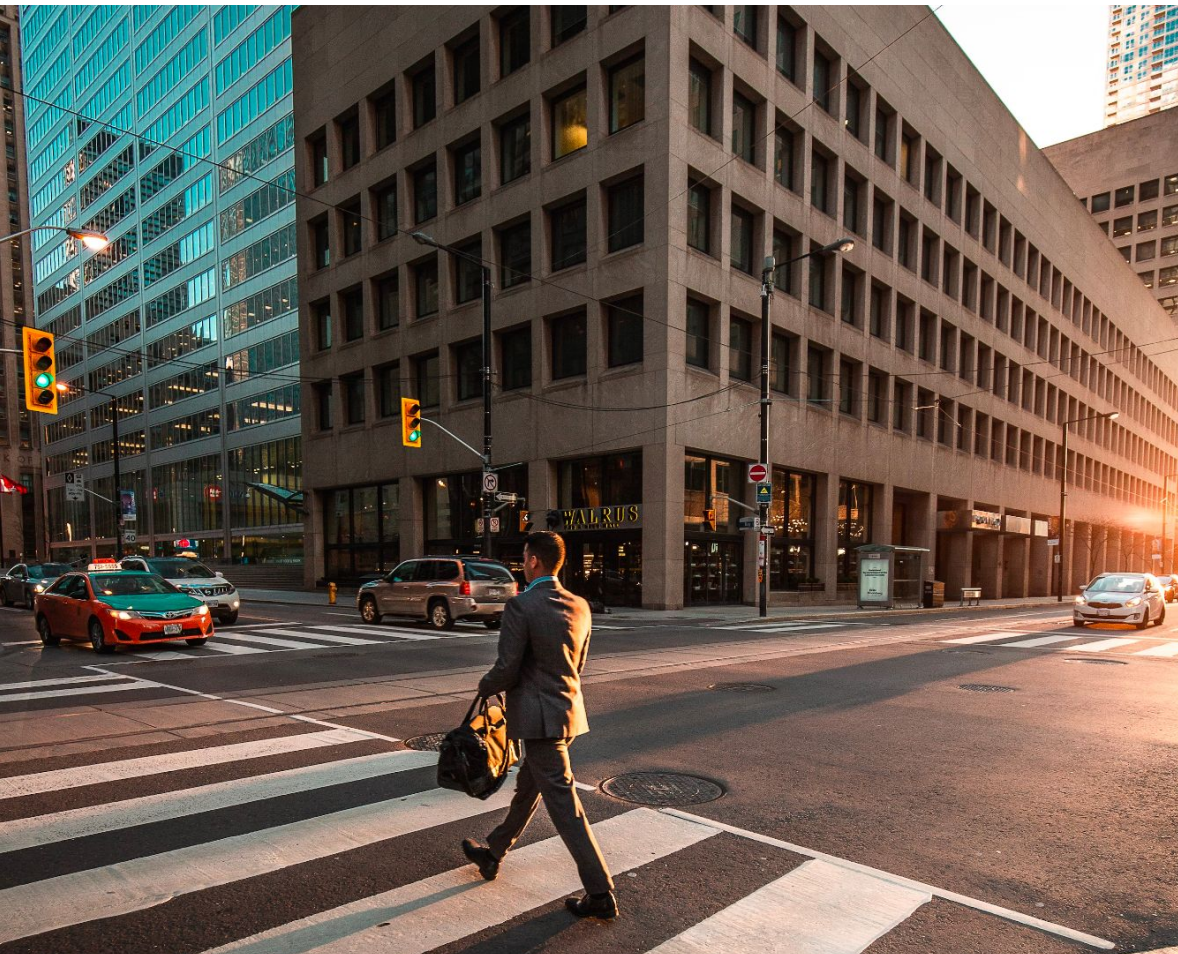
Full-stack Developers

Specialists in both frontend and backend technologies for comprehensive application solutions across various sectors.

Graphic Designer

Specialist in creating visual narratives through innovative design and compelling aesthetics.

Business Model



Third Party Integration via APIs

A gateway service enables integration with third-party systems, ensuring broad compatibility and flexibility.

Subscription model

Monthly or annual licensing for the gateway service, including regular updates and maintenance services to ensure high reliability and performance.

Subscription and licensing pricing

Costs varying with the number of licenses for data certifications and verifications.

- Micro-Business (up to 10 employees): \$500 / month.
 - Small Business (11 to 50 employees): \$1,500 / month.
 - Medium Business (51 to 250 employees): \$5,000 / month.
 - Large Business (more than 250 up to 1,000 employees): \$7,500 / month.
-

Partners

Partnerships with software integrators and entities in the healthcare, insurance, clinical research sectors, offering possibilities for licensing agreements or volume pricing



Documentation: github.com/soschain/docs

Preview video: youtube.com/@soschain

Info: connecthealth.info/soschain

