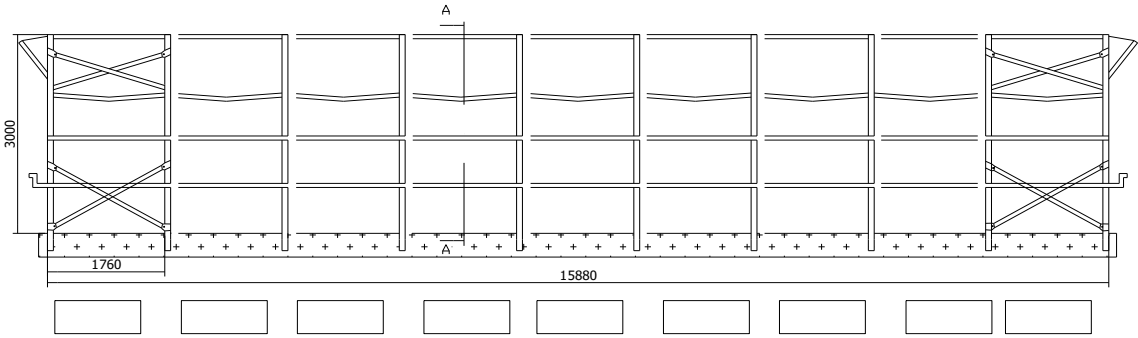


GREENHOUSE JEL-TOM

Greenhouse construction: Made of hot-dip galvanized pipe Ø 42 mm, Ø 27 mm and Ø21mm. Greenhouse dimensions: width 6.3 m, length 15.84 m, height 3 m, field width 1.76 m. Greenhouse arches: Made of hot-dip galvanized pipe Ø 42 mm, wall 2 mm. Extension of the pipe is done by connecting the pipe to the pipe and fixing the joint with a screw or extension by welding, then anti-corrosion protection is performed at the weld site (primer 1x and final varnish 2x). The arches of the greenhouse from the top have a slight drop on the outside of the greenhouse so that condensate inside the greenhouse can flow down the walls of the greenhouse and so that the snow can slide off the greenhouse cover more easily. The arch of the greenhouse has a horizontal fastening at a height of 200 cm from the ground made of hot-dip galvanized pipe Ø 42 mm which in its middle part is connected to the top of the arch by means of a vertical fastening. All joints are secured with clamps of min. 1.5 mm and they are hot-dip galvanized. The distance between the arches is 1.76 m. The outer walls are at least 1.30 m high. The fixing of the arches to the ground is ensured by drilling or digging a hole min. Ø 25 cm and depth min 35 cm. The user ensures that the plot is tightened. The part of the arch that is concreted into the ground has a welded profile of min Ø8 mm perpendicular to the arch with the aim of a more compact connection of the arch with the concrete foundation. The greenhouse has three fixtures along the entire length of the greenhouse made of hot-dip galvanized pipe profile Ø 27 mm (at the top of the greenhouse) and Ø 27 mm (on the side of the greenhouse), which are: - one at the top of the greenhouse arches, - two on the left and right greenhouse at a height of about 190 cm from the ground. Longitudinal fasteners are bent between each arch inwards so that the snow can slide more easily. The extension of the longitudinal fastenings is performed by connecting the pipe to the pipe and the joint is fixed with a screw. The front two and rear two arches of the greenhouse are fixed by placing hot-dip galvanized pipes Ø21 mm with a wall of 2 mm in the lower part of the greenhouse on both sides of the greenhouse between the first two and the last two arches. The fastenings between the arches are placed in the shape of X and the connection with the arch is made with a hot-dip galvanized shell with a thickness of at least 1.5 mm. In addition to the lower stiffeners between the first two and the last two arches, there are also reinforcements in the upper part of the greenhouse on both sides. The fasteners are made of hot-dip galvanized pipes Ø 27 mm wall 2 mm. The upper fastenings are also placed in an X-shape. The joints with the arch are secured with hot-dip galvanized clamps with a thickness of min. 1.5 mm. The fasteners at the intersection are also connected with a hot-dip galvanized clamp. Front and rear door hinges are made of hot-dip galvanized pipes Ø 27 mm. The wing of a single-leaf door is made of hot-dip galvanized pipe Ø 21, the dimensions of the door are 130 cm x 200 cm. The door is equipped with a lock with which it is fixed to the door stem. It is necessary to connect the pipe with a pipe-to-pipe system, and the joint is fixed with a screw. In the case of welding, anti-corrosion protection is performed (primer 1x and finish varnish 2x). The door leaf next to the frame has fastenings that are also fastened with hot poc.helms. Above the door, a ventilation opening is made of hot-dip galvanized pipe Ø21 mm. The ventilation opening is semicircular in shape, at least 200 cm wide and at least 60 cm high, and is made in such a way that the sealing of the pipe to the pipe is maximal so that there is no heat loss from the greenhouse. The greenhouse cover is secured with 200 mic thick foil. which has four stabilizers: AV + IR + AF + AP with a four-year warranty on functionality. The foil is fastened with an aluminum double profile. The profiles are placed along the entire length of the greenhouse on both sides and along the entire surface of the front and rear arches (up to the height of the side ventilation). The front and back of the greenhouse are covered in the entire surface with UV + IR + AF + AP foil 200 mic thick. The greenhouse has lateral ventilation along the entire length of the greenhouse on both sides and a height of at least 60 cm. Lifting the side ventilation is ensured by means of a handle and a pipe along the greenhouse of profile Ø27 mm on which the foil is wound. A fixed foil at a height of 70 cm is placed under the side ventilation. When the side ventilation is lowered, the foil overhang over the fixed part has a min. 20 cm. On every other side arch, side ventilation guides are placed, which are made of hot-dip galvanized pipe Ø 21 mm. The greenhouse is equipped with a drip irrigation system, mulch foil, thermometer and hydrometer.

GREENHOUSE JEL-TOM

POGLED S BOKA



PREDNJA STRANA

PRESJEK A - A

