



KymanoX[®]

...because patients deserve better

ABOUT US



OUR NAME

Pronounced ki'-mah-noks, means **Ideal Knowledge Transfer[®]**, which ensures technical know-how is shared, scaled, and sustained across every team and every phase.



OUR APPROACH

Cross-functional collaboration with engineers, scientists, compliance & regulatory experts, PMs, and more.

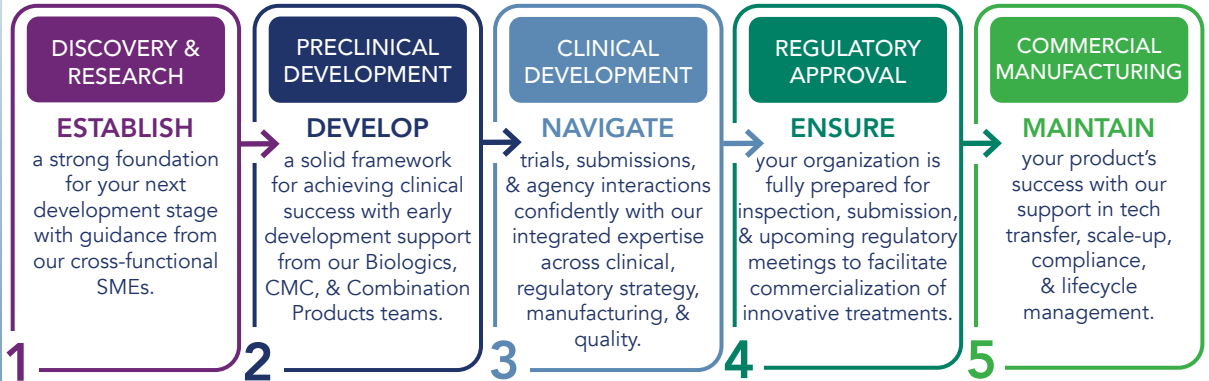


OUR EXPERTISE

Work exclusively in Life Sciences for **over 20 years**, supporting combination products, biotechnology, pharmaceuticals, and medical devices.

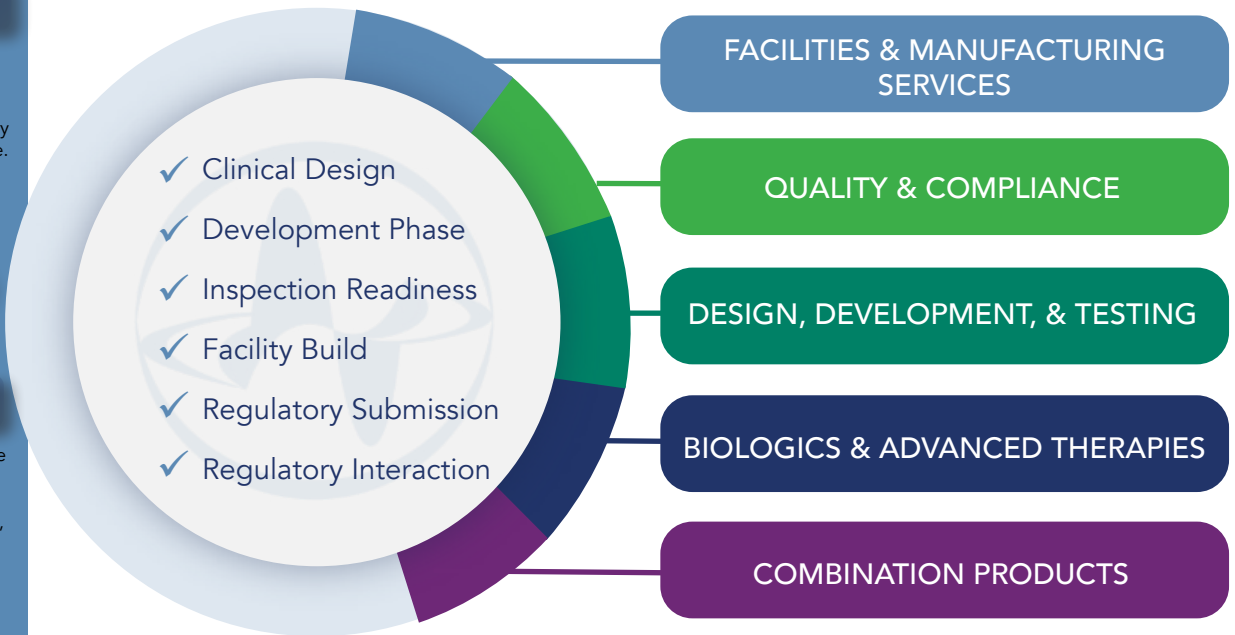
ONE SOURCE. EVERY STAGE.

Combination Products | Biotechnology | Pharmaceuticals | Medical Devices



FOCUS AREAS

Your Life Science Solution Partner for Your Next Milestone



Advancing Life Science Innovation Through Insightful Solutions and Collaboration

info@kymanox.com | www.kymanox.com

Helping You Mitigate Risks and Save Costs

RIGHT-FIRST-TIME

Kymanox[®] becomes an extension of your team, providing bandwidth to meet your timelines and facilitate faster speed to market. Our **Right-First-Time** approach ensures your products reach patients sooner.

STRATEGIC GUIDANCE & EXECUTION

As an accountable partner that goes beyond advising, Kymanox fosters **close collaboration**. We align with your objectives, mitigate your risks, and celebrate your outcomes, demonstrating true commitment to your success.

SCALABLE SOLUTIONS

Our solutions scale with your growth, meeting your needs today and your expansion tomorrow. From early development to enterprise-wide support, Kymanox stays with you through the **full product lifecycle**.

OUR COMBINED TEAMS



250+ EMPLOYEES
PROJECT MANAGER & EXPERT LEADS
ON ALL PROJECTS



ENGINEERS & SCIENTISTS
MASTERS AND PHD LEVELS



CERTIFIED
ASQ | PMP | RAC | CSSBB



SPECIALISTS
PHARMDS | MDs | MPHs | MICROBIOLOGISTS
FORMER FDA



QUALIFIED NETWORK
SUBJECT MATTER EXPERTS TO SUPPORT
SPECIALIZED NEEDS

40+
QMS
COMPLIANCE
PROJECTS

200+
PRODUCTS
& DEVICES
SUPPORTED

200+
AUDITS
SUPPORTED

20+
MANUFACTURING
FACILITIES
SUPPORTED

**Data collected from
the last 5 years*