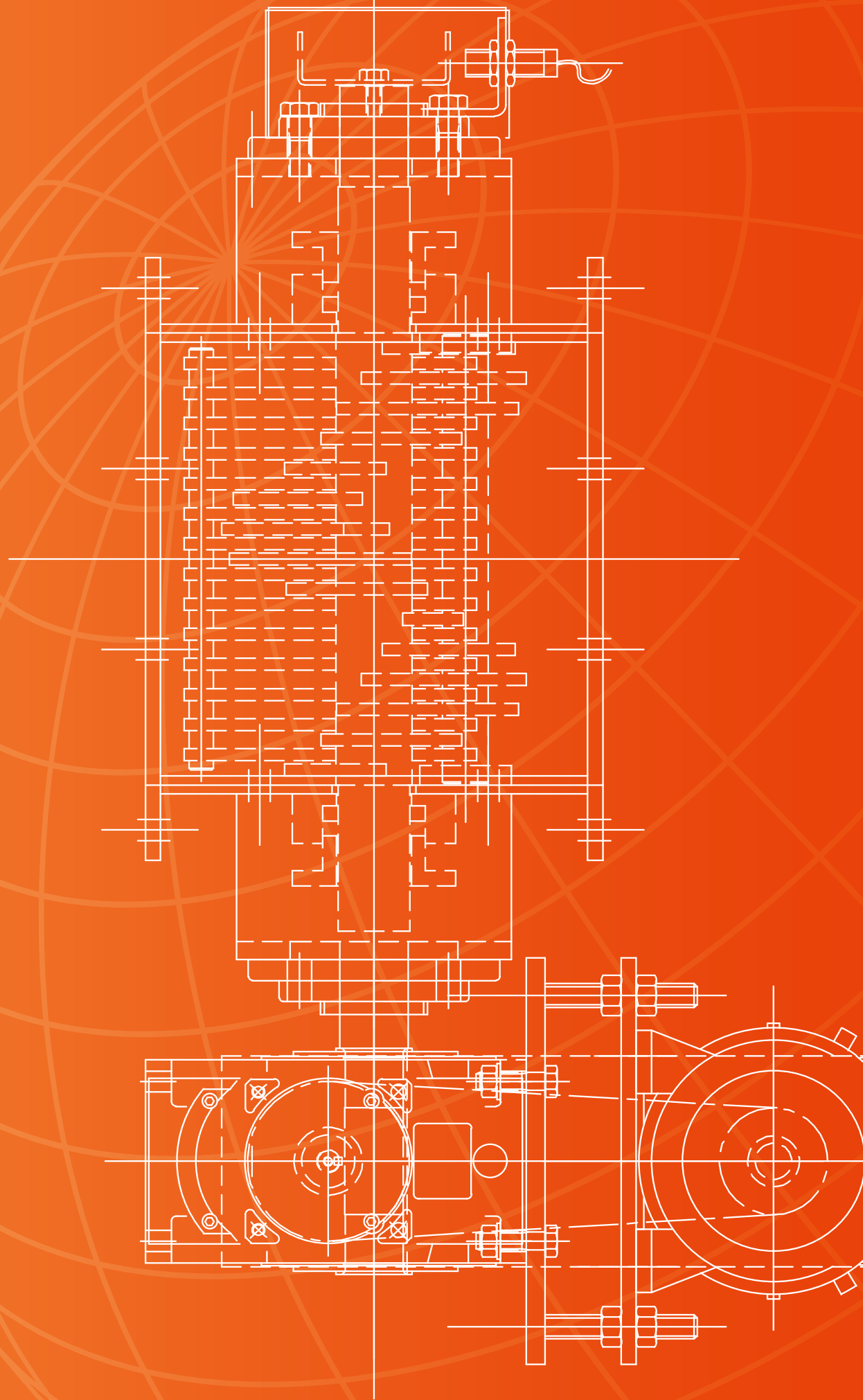


SIZERS AND ROLLER SCREENS



11



ROLLER SCREENS

11.1

CODE RO-SCR



DESCRIPTION

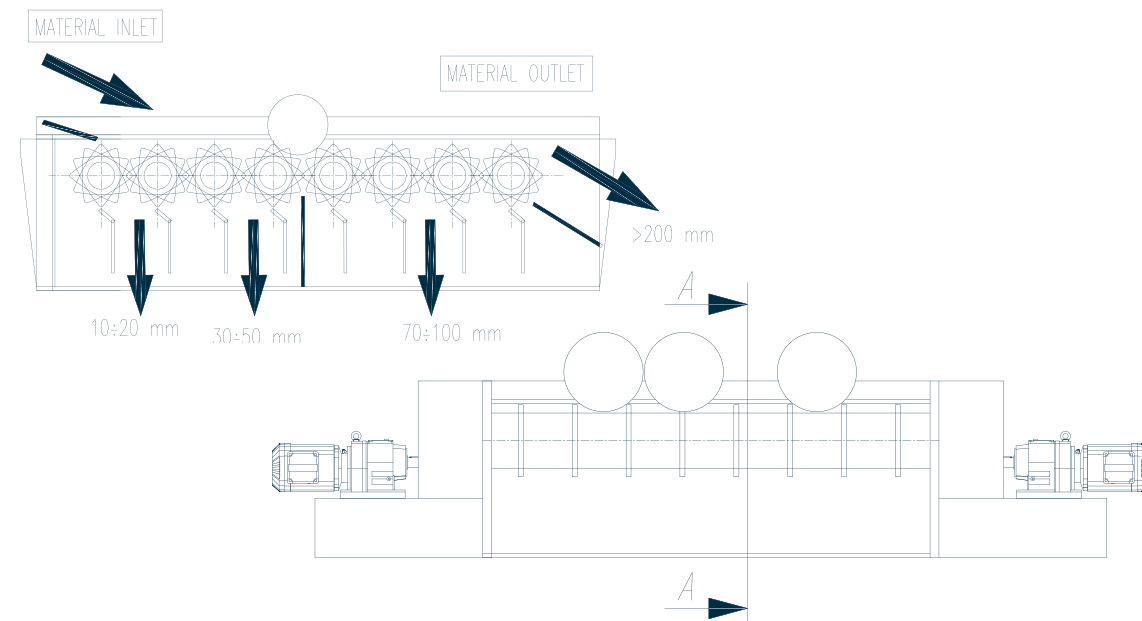
Field of use: screening of large-sized material and even wet material.

Technical description: heavy-duty rollers, impact-resistant, each roller features drive and frequency inverter.

Standard dimensions: from 1500 to 3500 mm.

Versions: for various material size screening.

Advantages: low maintenance screen, reliable exercise even with wet materials.



DOUBLE ROLLER CRUSHERS

11.2

CODE CRU-D



DESCRIPTION

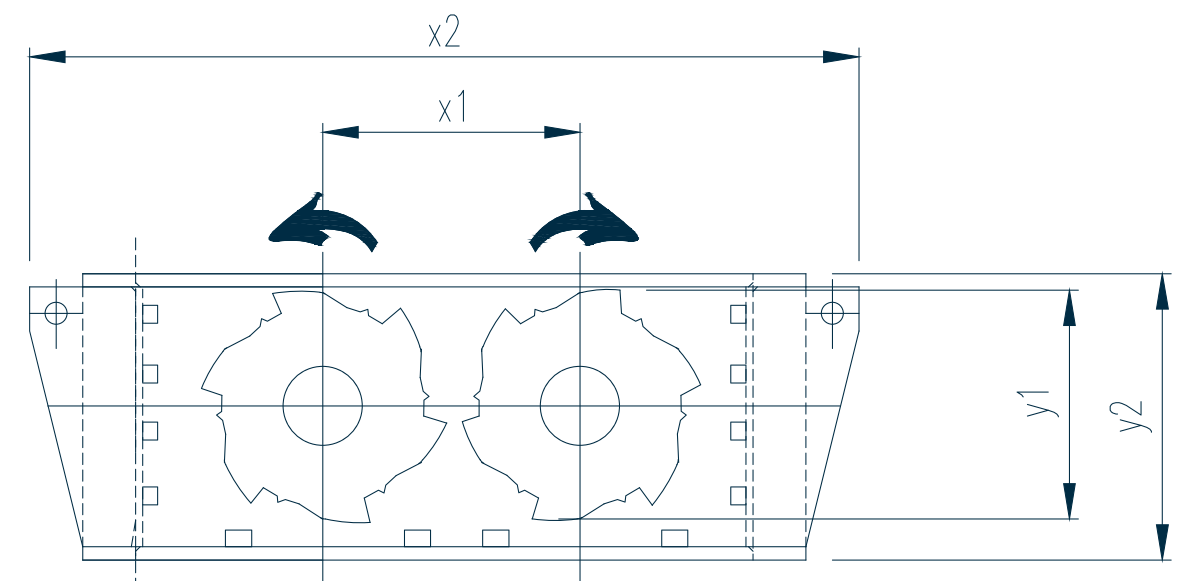
Field of use: sizing/crushing of medium capacity flows at low rotors speed.

Technical description: two counter-rotating crushing rotors complete with adjusting devices for material size selection.

Standard dimensions: from 500 to 1500 mm roller size.

Versions: with replaceable rotor segments and with frequency inverter.

Advantages: low vertical space needed and low wear due to slow crushing speed.



LUMP CRUSHER

11.3

CODE CRU-L



DESCRIPTION

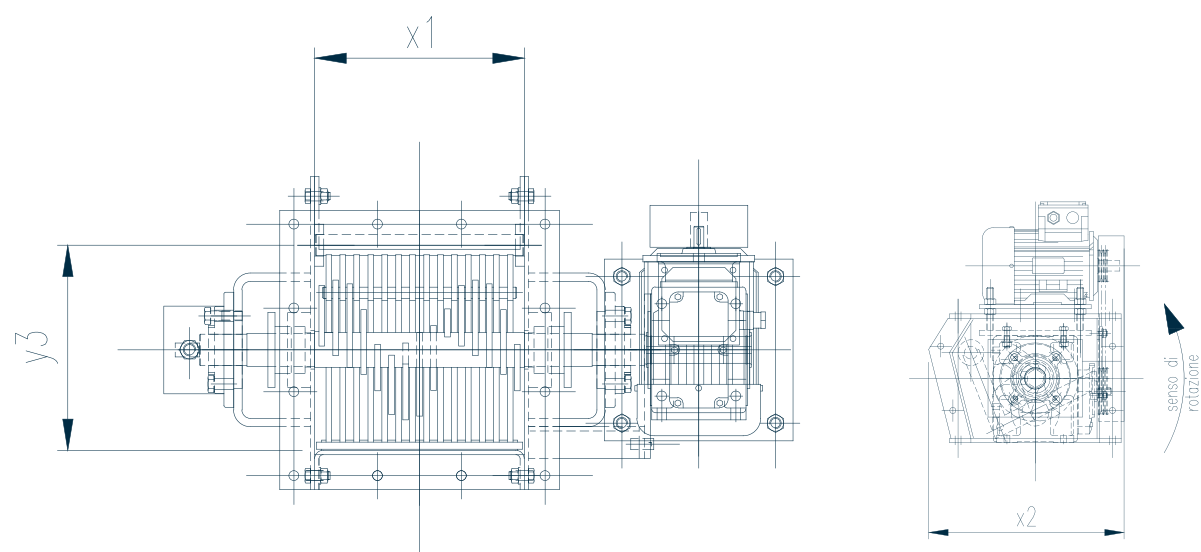
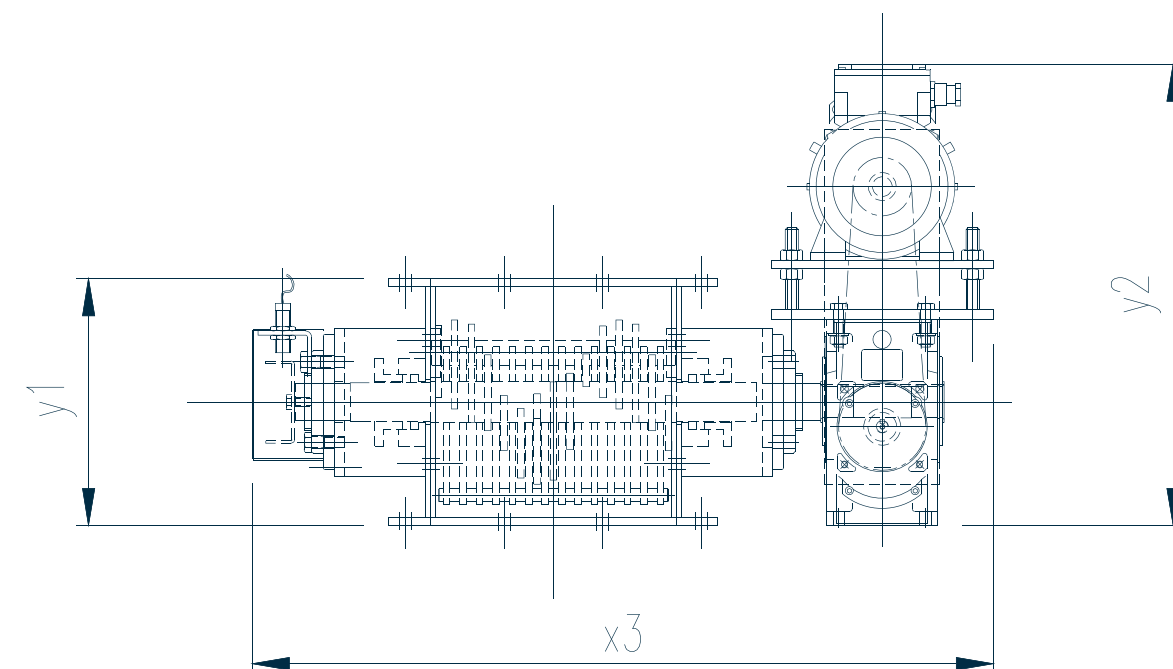
Field of use: crushing of medium-sized lumps.

Technical description: one rotor rotating in a grid with stuffing boxes, inspection doors, belts transmission speed switch.

Standard dimensions: 300 x 300 mm, 400 x 400 mm, 500 x 500 mm.

Versions: heavy-duty version.

Advantages: low vertical space needed and low wear due to slow crushing speed.



SHIP AND BARGE LOADING SYSTEMS

12



SHIP AND BARGE ^{12.1} LOADING SYSTEMS

CODE LOA-SH



DESCRIPTION

Field of use: port loading of ships and barges with swiveling crane.

Technical description: loading structure with turnable arm, complete with supplying screw conveyors and loading spout.

Standard dimensions: project related.

Versions: conveyors line with screw conveyors or drag chain conveyors.

Advantages: fast loading, dustfree of big bulk materials flows.





ECO HOPPERS

13.1

CODE HOP-E



DESCRIPTION

Field of use: port logistic in order to unload vessels at different places.

Technical description: receiving hopper, movable, complete with dedusting system.

Standard dimensions: project related.

Versions: project related.

Advantages: flexibility in the unloading position required.



14



PLOW FEEDERS

14.1

CODE PL-FEE



DESCRIPTION

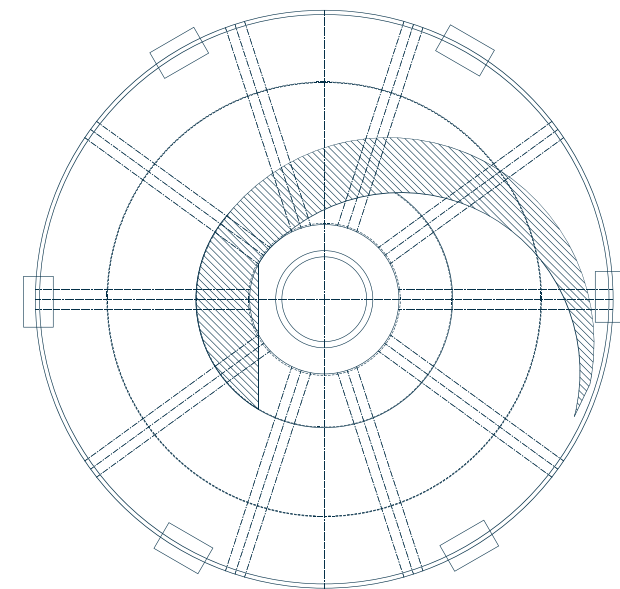
Field of use: feeding of very sticky and clogging material from silos.

Technical description: a feeding sickle-shaped arm, driven by a satellite gearbox, with frequency inverter. It rotates on the bottom of the silo and conveys the material towards a central outlet.

The feeding system is installed on a platform on the bottom of the silo.

Versions: made of stainless steel or carbon steel.

Advantages: automatic feeding of very clogging bulk materials.



WHEELED CUTTERS

14.2

CODE WH-CU



DESCRIPTION

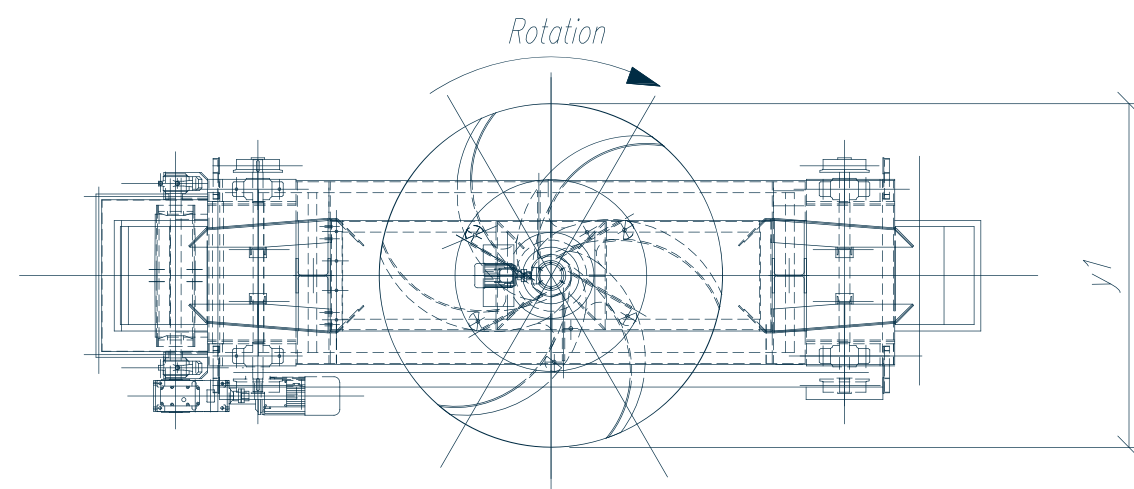
Field of use: feeding of bulk material from a linear bunker.

Technical description: a cutter driven by an electrical gearbox with frequency inverter is mounted on a wagon which runs along the linear bunker feeding the bulk material to a belt conveyor installed underneath. The system is complete with movable electric power feeding, rails and more.

Standard dimensions: cutter diameter from 2500 to 5000 mm.

Versions: for bulk materials with various repose angles.

Advantages: automatic feeding of bulk materials from large linear bunkers.



MOVING FLOORS

14.3

CODE FLO-M



DESCRIPTION

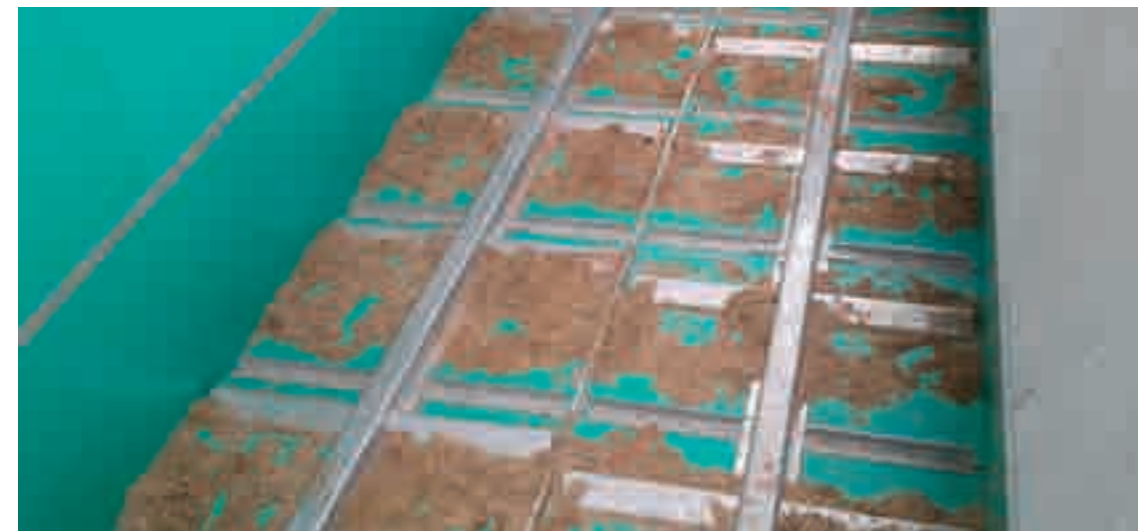
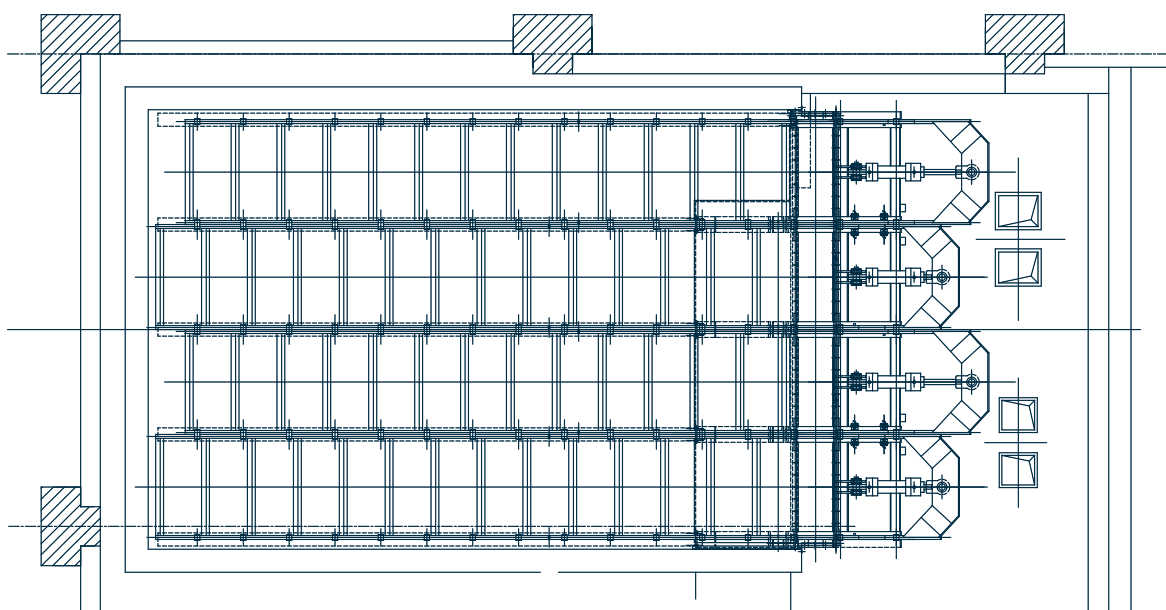
Field of use: unloading of waste material in a small vertical space.

Technical description: moving elements with hydraulic actuators.

Standard dimensions: 9000 x 3000 mm.

Versions: square version.

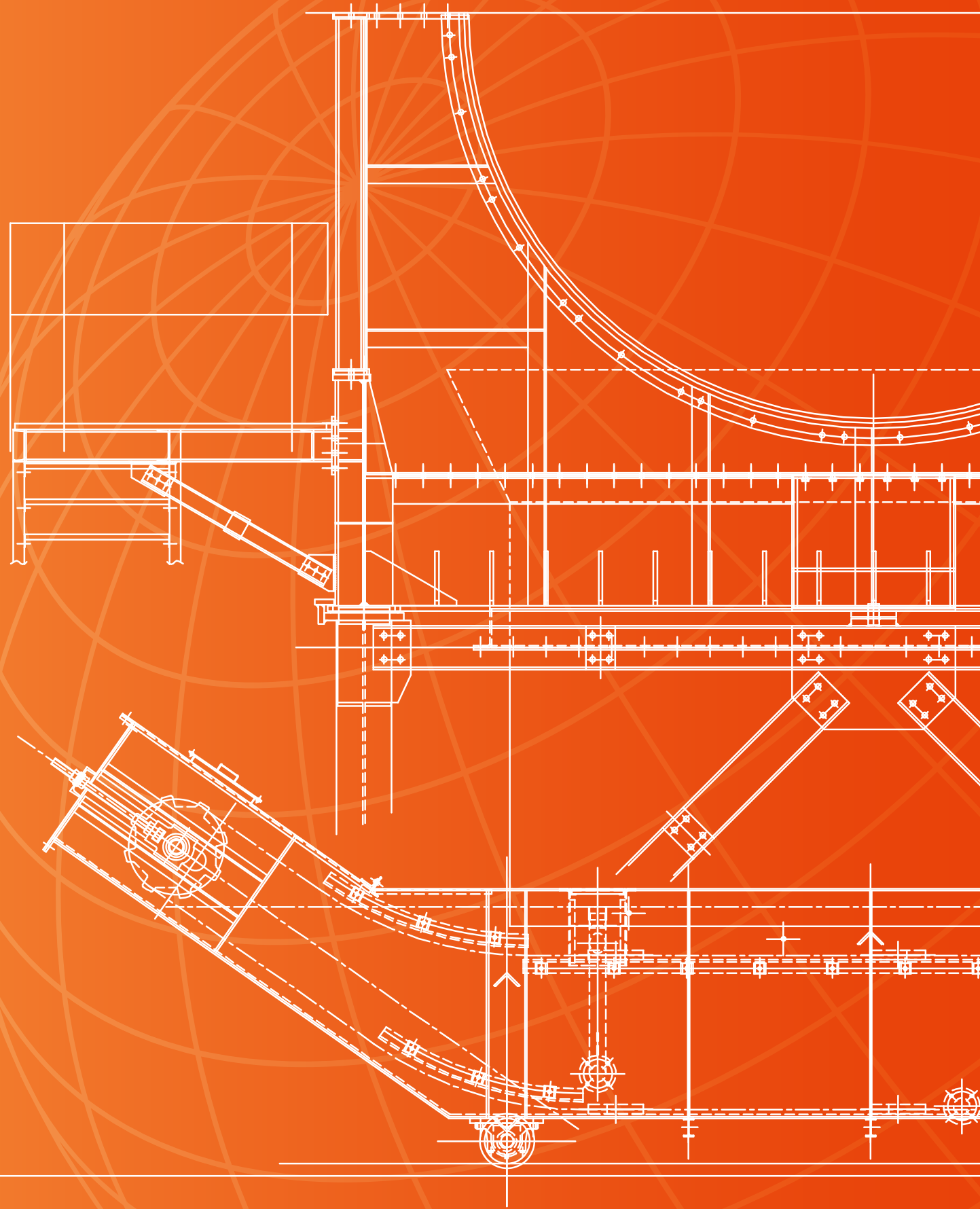
Advantages: low maintenance feeding solution, small vertical space needed.



ASH/SLAG EXTRACTORS



15



DEASHER CONVEYORS 15.1

DRAG CHAIN

CODE ASH-DRG



DESCRIPTION

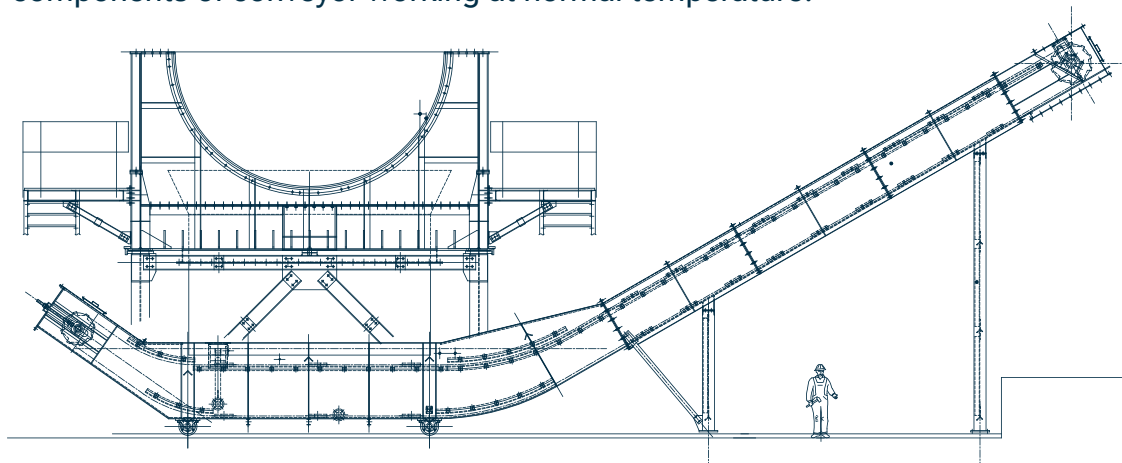
Field of use: boiler ash evacuation from a tank which in the meantime works as a tightening system between furnace outlet and atmosphere.
For ashes not containing foreign matters.

Technical description: scrapers connected to two chains, working in a water tank on the upper drum, convey the ashes to the outlet. The chains tensioned by means of a tensioning system at the tail end. Water supply system, water level control etc. are provided.

Standard dimensions: from width 600 to 1600 mm.

Versions: conveyor positioned on rollers / rails for easy maintenance.

Advantages: air tight evacuation of ashes from underneath the furnace with components of conveyor working at normal temperature.



DEASHER CONVEYORS 15.2 ROLLER SHUTTER

CODE ASH-RS



DESCRIPTION

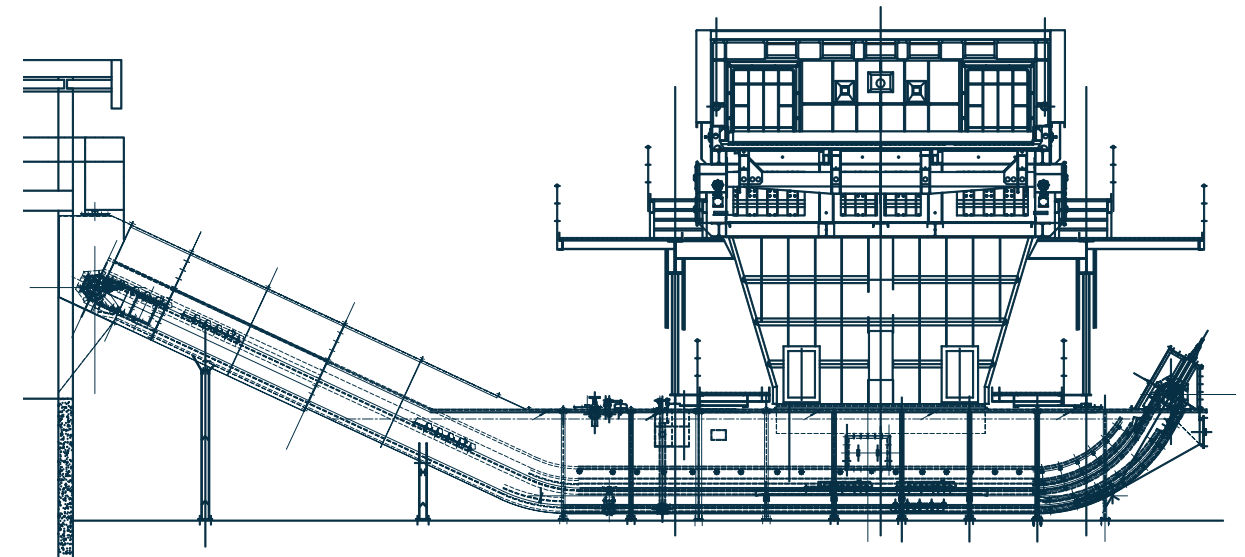
Field of use: boiler ash evacuation from a tank which in the meantime works as a tightening system between the furnace outlet and atmosphere. For ashes containing foreign matters such as iron wires, etc.

Technical description: shutters hinged to each other create a continuous carper which can convey even various foreign matters such the one to find at waste incineration. The convey system working in a water tank on the upper drum, conveys the ashes to the outlet. The shutters are tensioned by means of a tensioning system at the tail end. Water supply system, water level control etc. are provided.

Standard dimensions: from width 600 to 1600 mm.

Versions: conveyor positioned on rollers / rails for easy maintenance.

Advantages: air tight evacuation of ashes from underneath the furnace with components of conveyor working at normal temperature.



DEASHER CONVEYORS 15.3

SLAT TYPE

CODE ASH-DRY ❖ ❖ ❖ ❖ ❖

DESCRIPTION

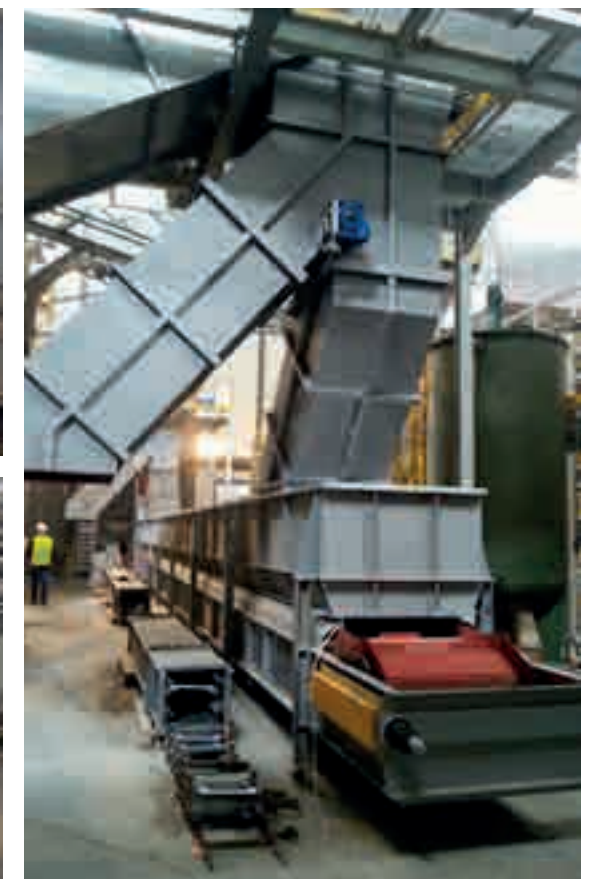
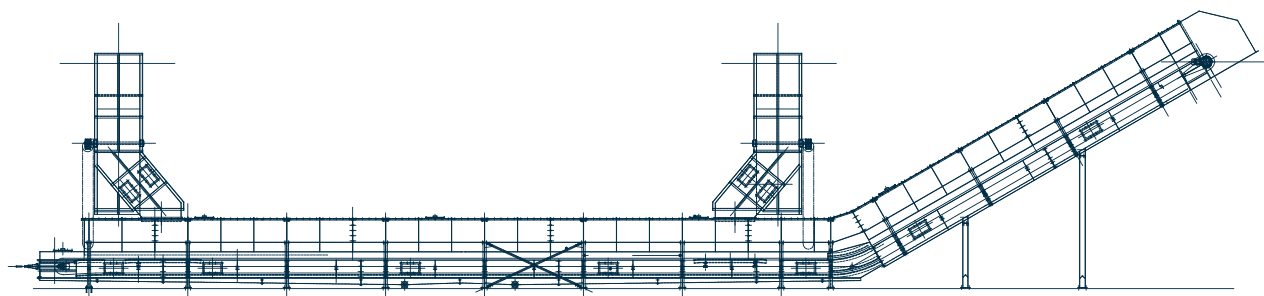
Field of use: boiler ash evacuation for ashes containing foreign matters such as iron wires, bigger size ashes etc.

Technical description: plates with mechanical sealings between each other create a continuous carpet which can accept big size ashes, foreign matters etc. The heat resistant plates are connected to chains and supported by rollers. The convey system working dry, on the upper drum, conveys the ashes to the outlet. The shutters are tensioned by means of a tensioning system at the tail end. The body of the conveyors provides fully air tight in order to avoid false air coming in disturbing the furnace exercise.

Standard dimensions: from width 600 to 1600 mm.

Versions: conveyor positioned on rollers / rails for easy maintenance.

Advantages: air tight evacuation of ashes from underneath the furnace. The ashes dry, no need to provide water supply etc.

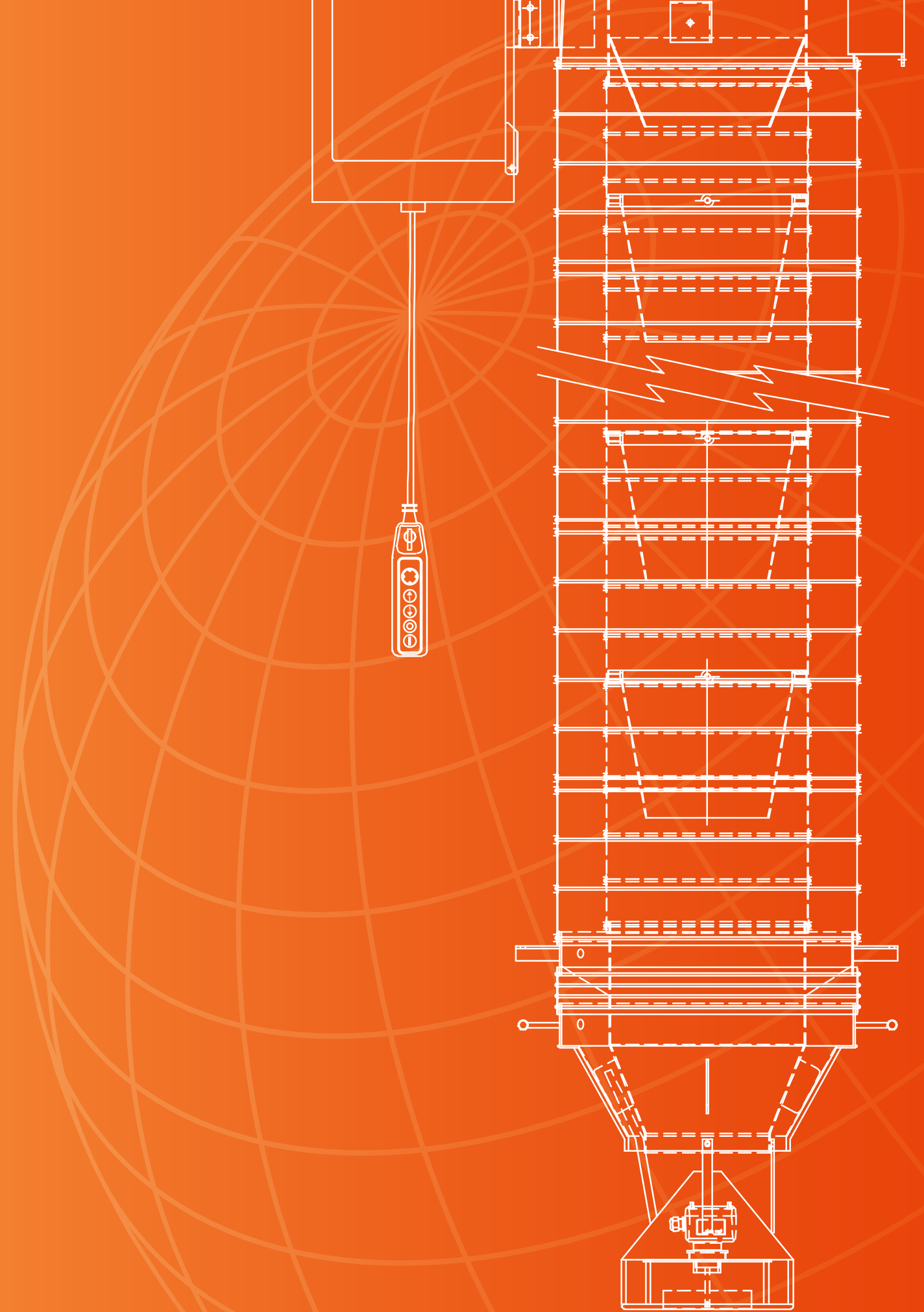


LOADING SPOUTS

114 - Our solutions



16



LOADING SPOUTS TANKER TRUCK

16.1

CODE LSP-TT



DESCRIPTION

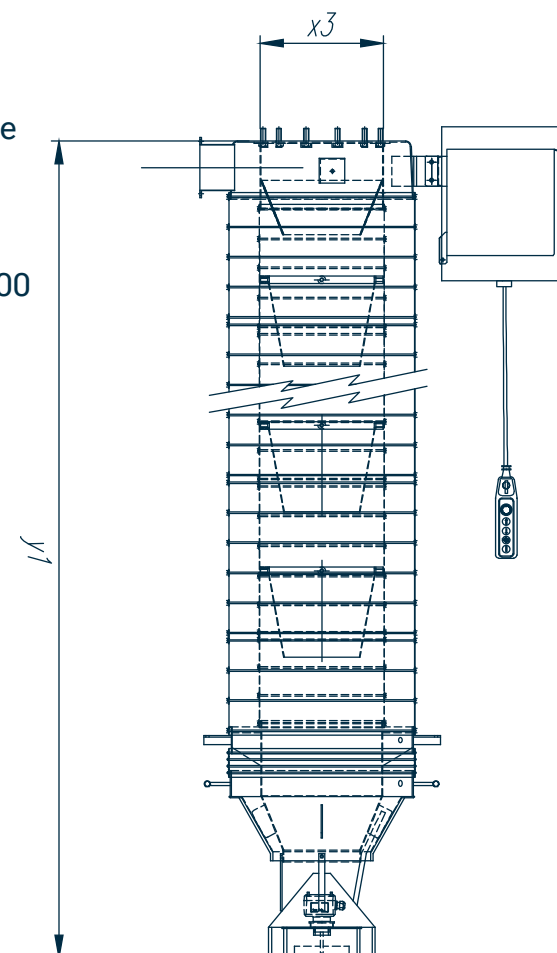
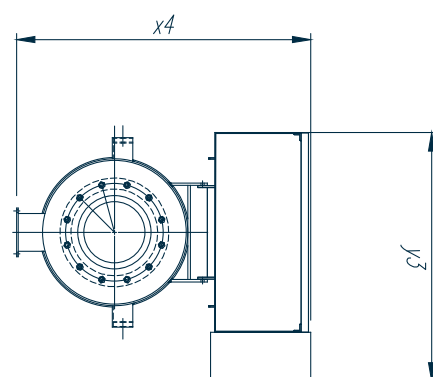
Field of use: dustfree loading of trucks.

Technical description: loading spout complete with inner and outer bellows, lifting system, level sensor, upper and lower limit switch.

Standard dimensions: loading range from 1500 to 6500 mm.

Versions: standard, Atex.

Advantages: dustfree loading of powders.



LOADING SPOUTS^{OPEN TYPE}

16.2

CODE LSP-OT



DESCRIPTION

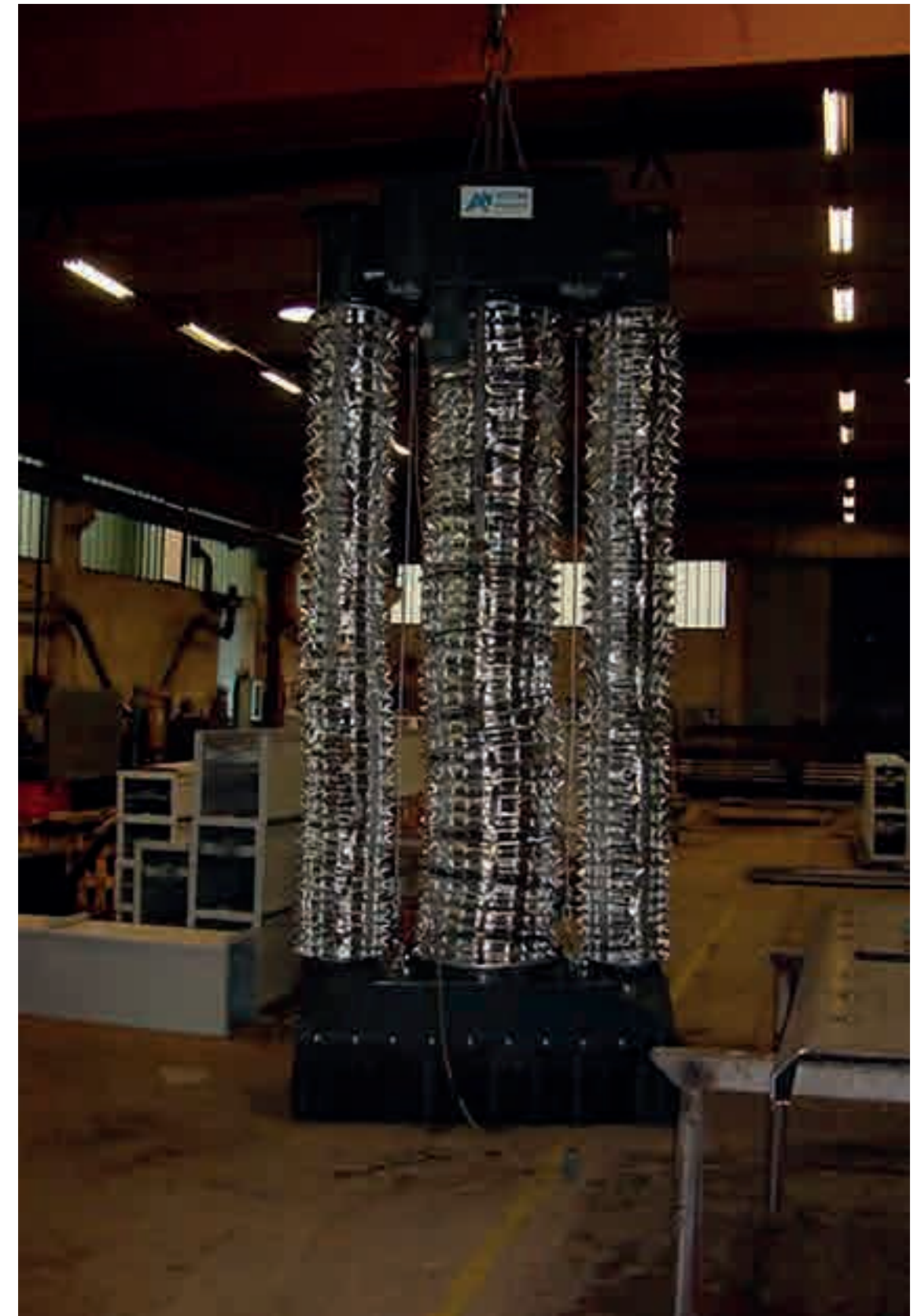
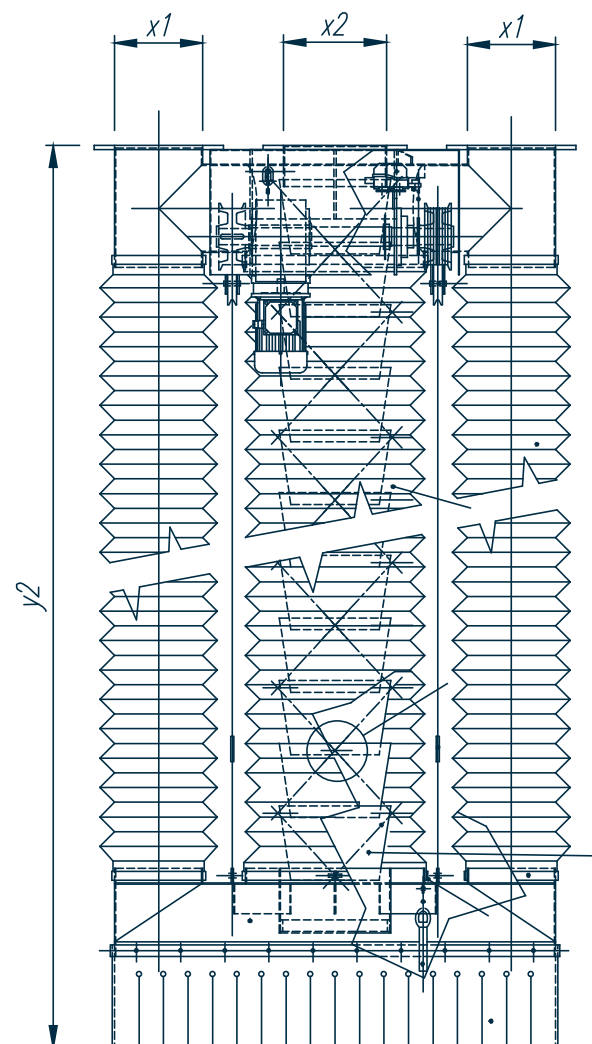
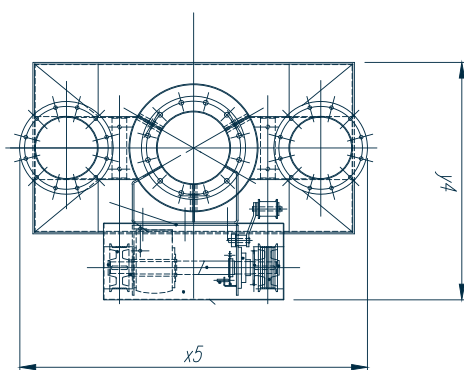
Field of use: dustfree loading of trucks and train wagons.

Technical description: loading spout complete with inner metallic segments and outer bellows, lifting system, level sensor, upper and lower limit switch.

Standard dimensions: loading range from 1500 to 6500 mm.

Versions: standard, Atex, Hardox elements.

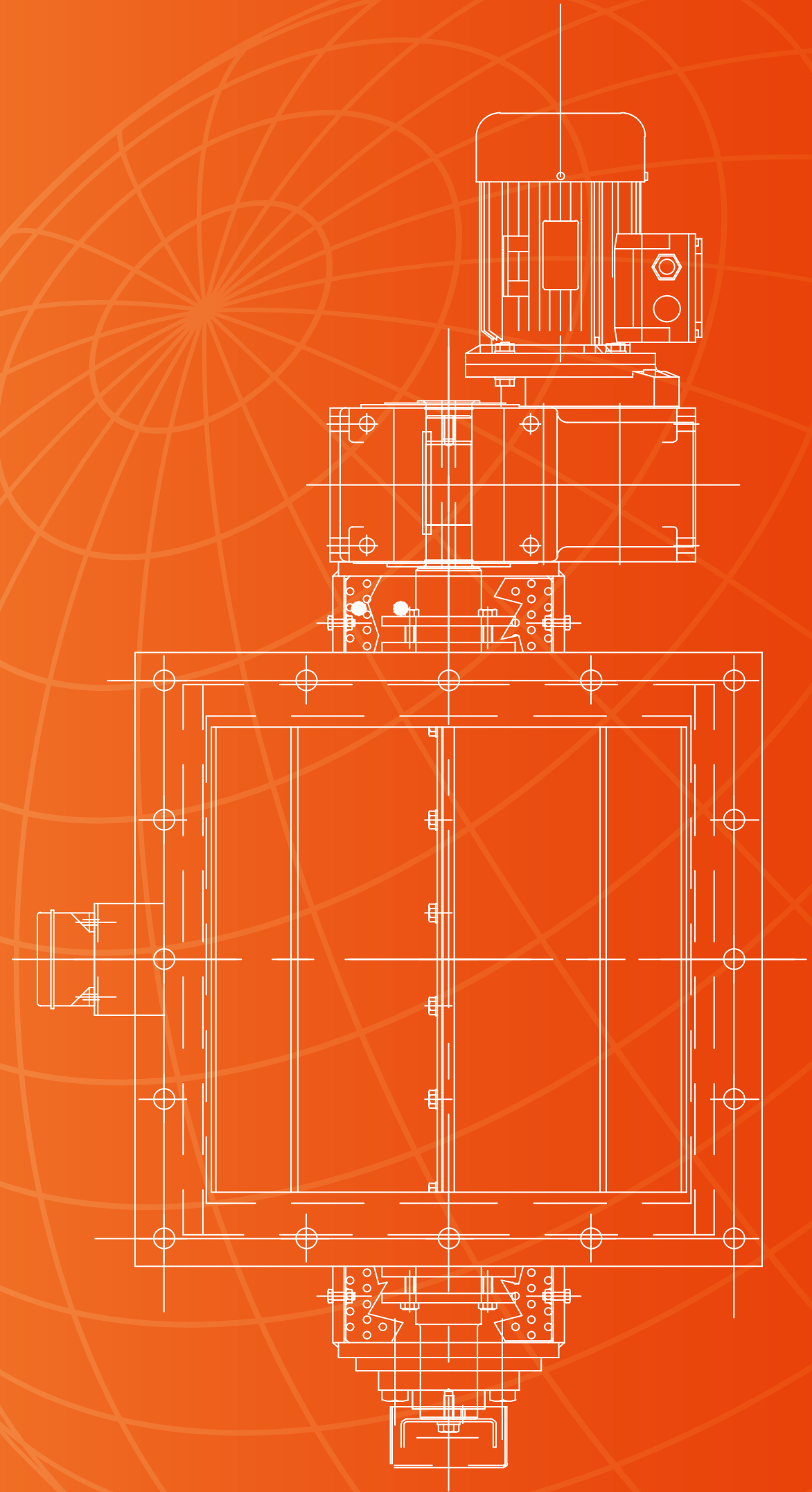
Advantages: dustfree loading of powders.



ACCESSORIES EQUIPMENT



17



ROTARY VALVES

17.1

CODE RV



DESCRIPTION

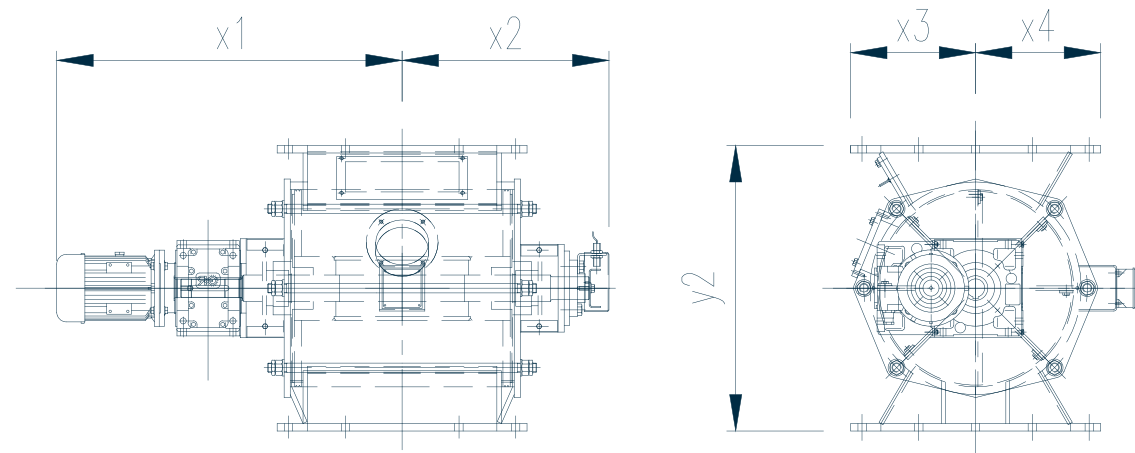
Field of use: controlled flow of powder and dry material, for feeding or controlled flow between areas with different pressure levels.

Technical description: heavy-duty welded version with adjustable sealing elements, adjustable stuffing boxes, speed monitor.

Standard dimensions: from size 315x315 mm.

Versions: standard, ATEX, Hardox elements.

Advantages: reliable system for controlling flow capacity.



DOUBLE FLAP VALVES

17.2

CODE FV-D



DESCRIPTION

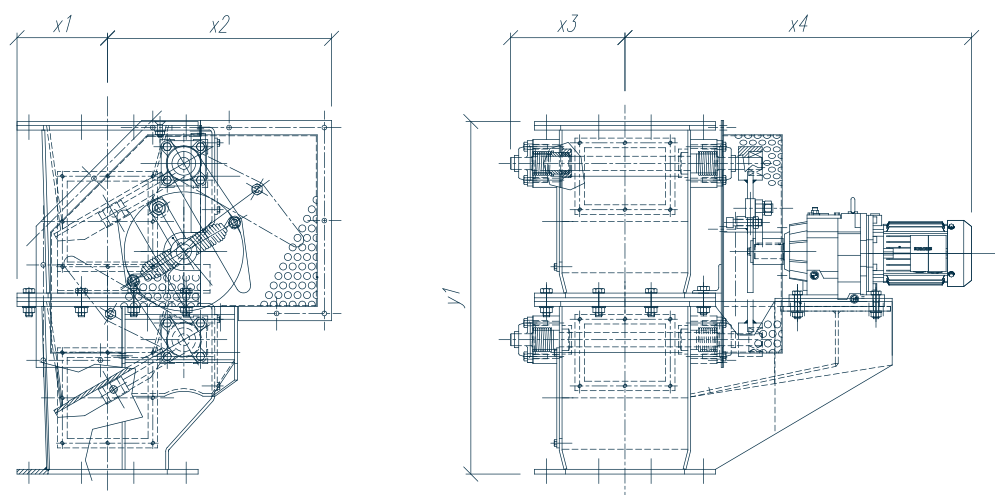
Field of use: controlled flow of small-sized and dry material between areas with different pressure levels.

Technical description: heavy-duty welded version with tension springs, adjustable stuffing boxes, speed monitor.

Standard dimensions: from size 315x315 mm.

Versions: standard, ATEX, Hardox elements.

Advantages: ensures reliable exercise even in presence of a small quantity of oversized material, motorized and pneumatic.



DOUBLE DOUBLE FLAP VALVES 17.3

CODE FV-DD



DESCRIPTION

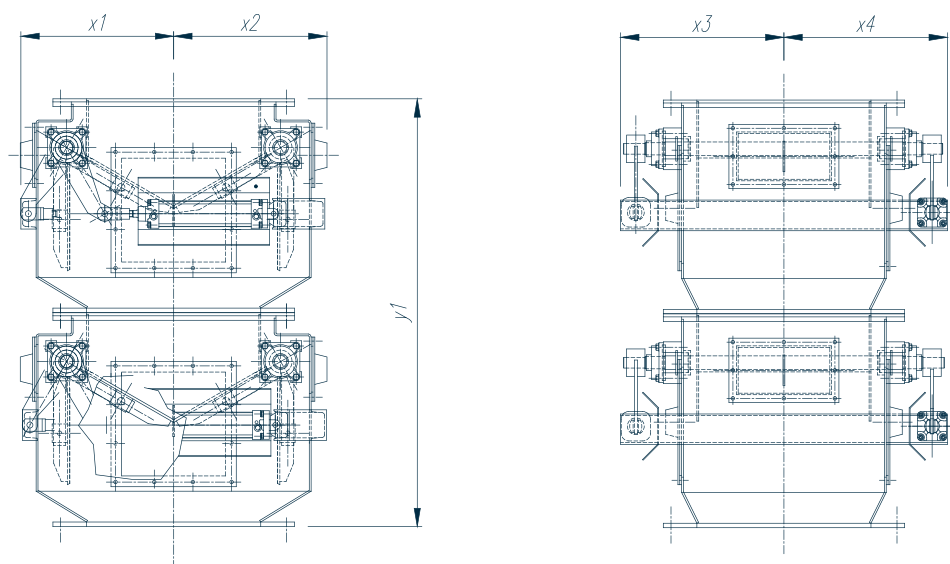
Field of use: controlled flow of small-sized and dry material between areas with different pressure levels.

Technical description: heavy-duty welded version with tension springs, adjustable stuffing boxes, speed monitor, gearbox.

Standard dimensions: from size 400x400 mm.

Versions: standard, ATEX, Hardox elements.

Advantages: ensures reliable exercise even in presence of a small quantity of oversized material, motorized, pneumatic and hydraulic.



SLIDE GATES

17.4

CODE SG



DESCRIPTION

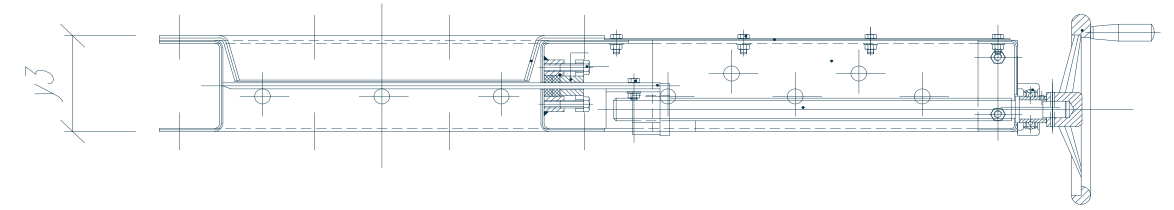
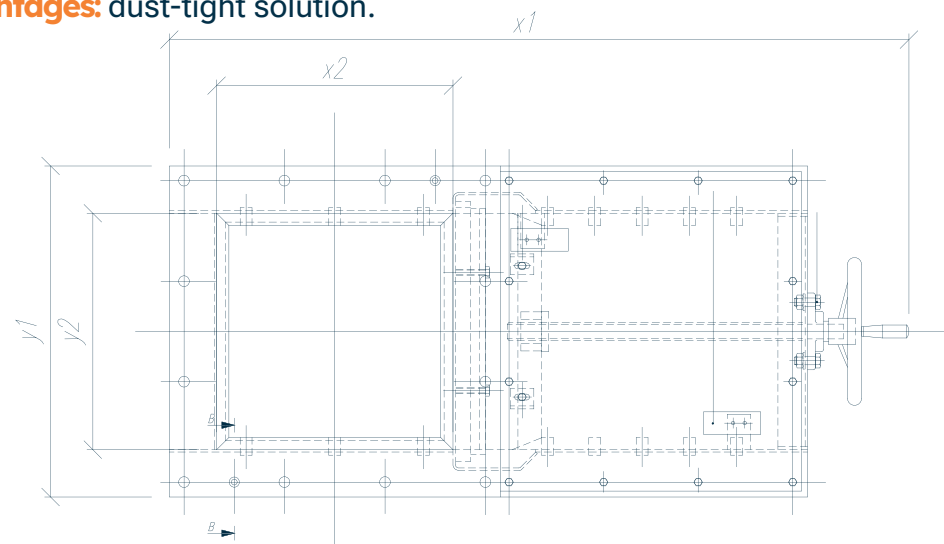
Field of use: stopping the flow of powder material in an almost dust-tight way, with automatic operation.

Technical description: heavy-duty welded version, self-adjustable stuffing boxes, limit switches, stainless steel gate.

Standard dimensions: from size 315x315 mm.

Versions: standard, ATEX, Hardox elements, big-size materials, pneumatic or electric drive operation, hand wheel, chain wheel, motorized, pneumatic and hydraulic.

Advantages: dust-tight solution.



ROD BAR GATES

17.5

CODE RBG



DESCRIPTION

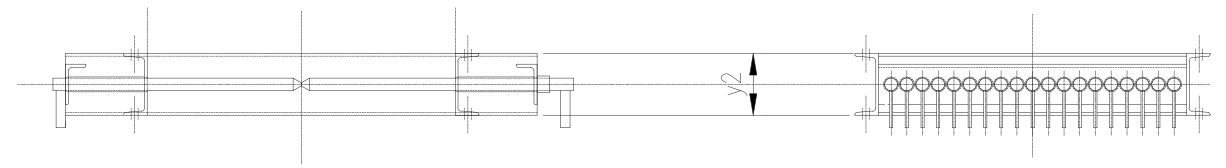
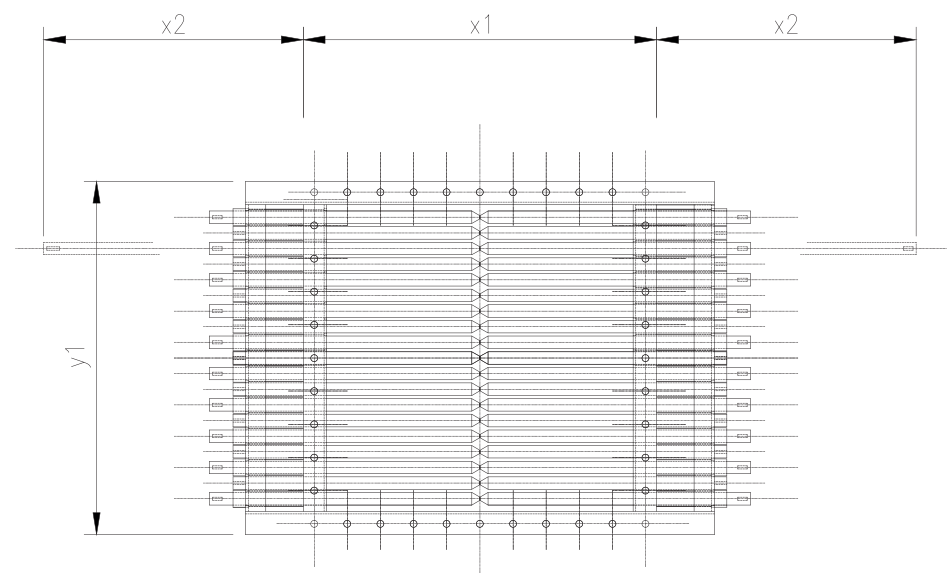
Field of use: stopping the flow of even medium-sized material.

Technical description: full rods complete with safety fixing and dust material sealing.

Standard dimensions: from size 400x400 mm.

Versions: manually actuated, pneumatic actuated.

Advantages: safe flow-stopping system for even medium-sized material.



EXPANSIONS JOINTS 17.6

CODE EXJ



DESCRIPTION

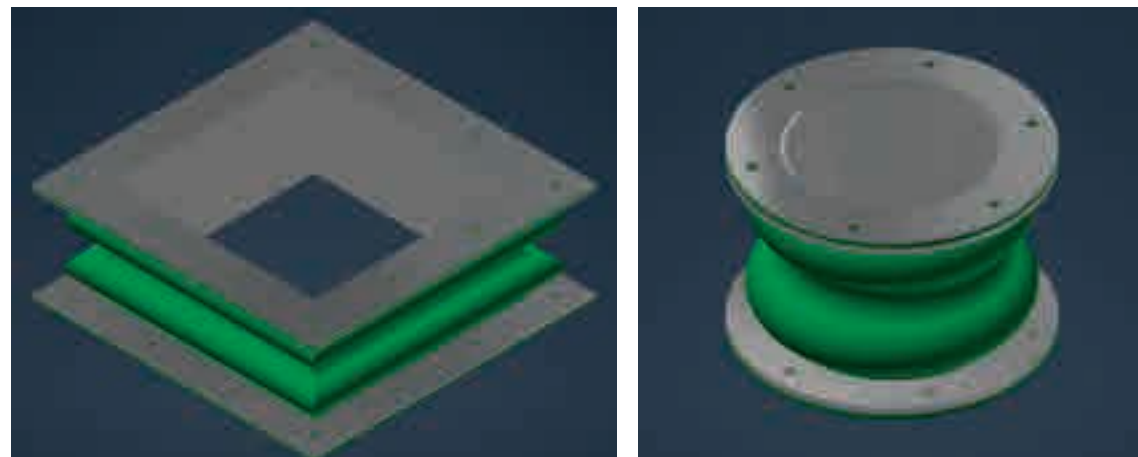
Field of use: flexible, dust-tight connections between plant components that show thermal elongation.

Technical description: heavy-duty welded version; inside protection hopper, abrasion-resistant fabric.

Standard dimensions: from size 315x315 mm.

Versions: standard, ATEX, Hardox elements, high-temperature and medium pressure exercise.

Advantages: dust-tight but flexible connection between plant components that show elongations for any reasons.



DIVERTERS TYPE

17.7

CODE DV



DESCRIPTION

Field of use: automatic, dust-tight supply of material flows to different plant users.

Technical description: available in various shapes, from two-ways flow to eight-ways flow.

Standard dimensions: customized dimensions.

Versions: from 2 to 8 dividing chutes, high-speed actuators, stainless steel, pneumatic or electric actuators.

Advantages: dust-tight but flexible connection between plant components that show elongations for any reasons.



AIR SLIDES

136 - Our solutions



18



AIR SLIDES

18.1

CODE ASL



DESCRIPTION

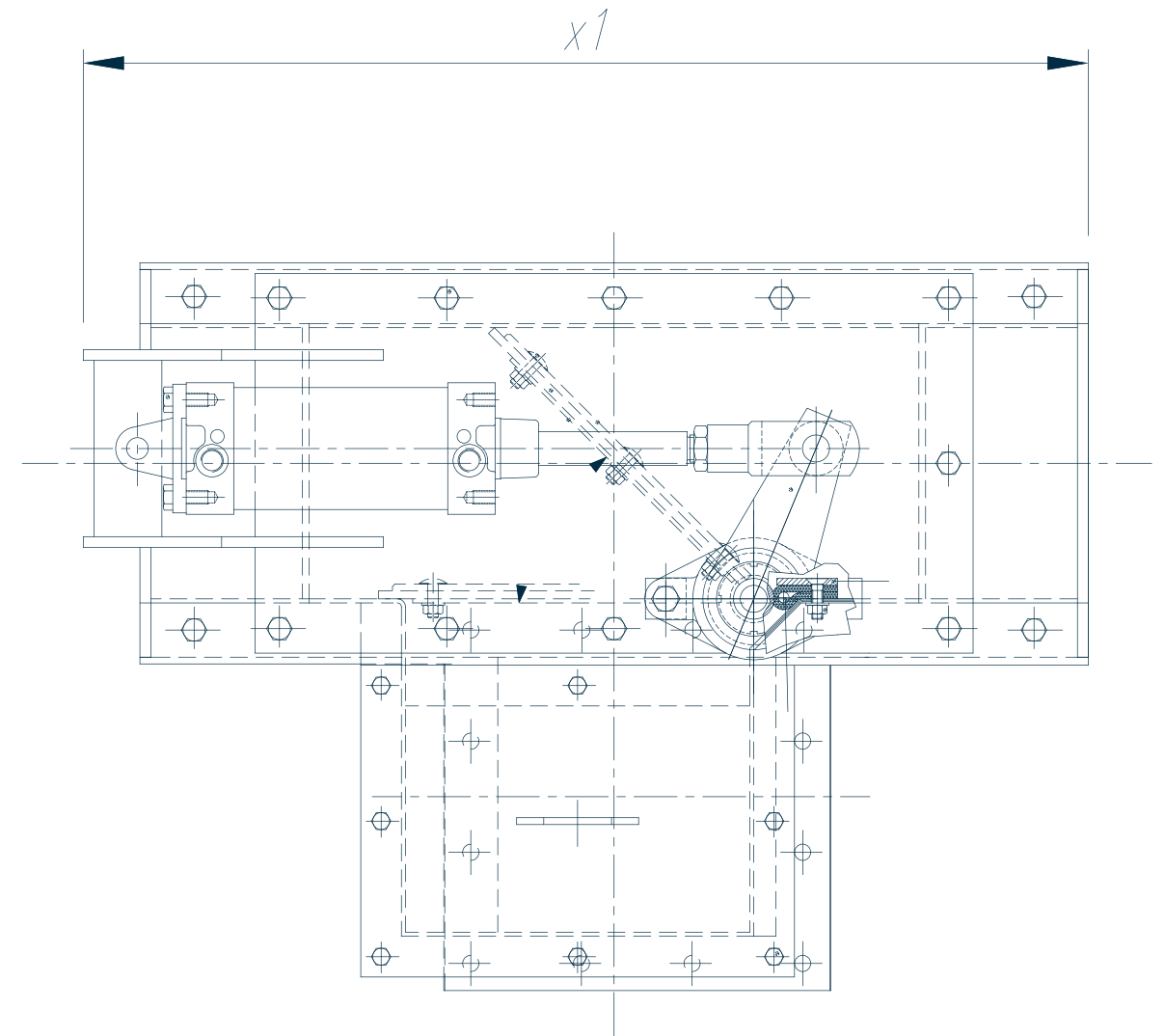
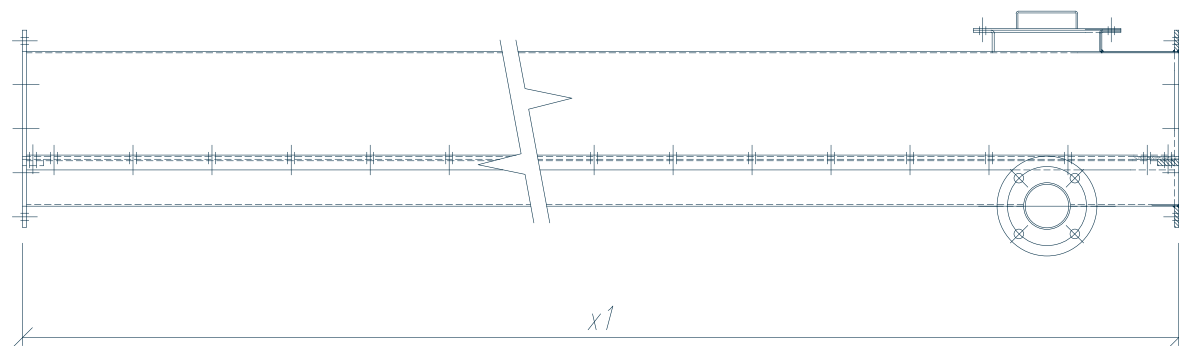
Field of use: conveying of powder material with high capacity, dust-tight, with low energy consumption.

Technical description: dust-tight casing with abrasion-resistant fabric, air fans.

Standard dimensions (width): from size 300 mm.

Versions: high temperature.

Advantages: low energy requirements, high capacity, frees up valuable floor space, environmentally friendly, low noise.

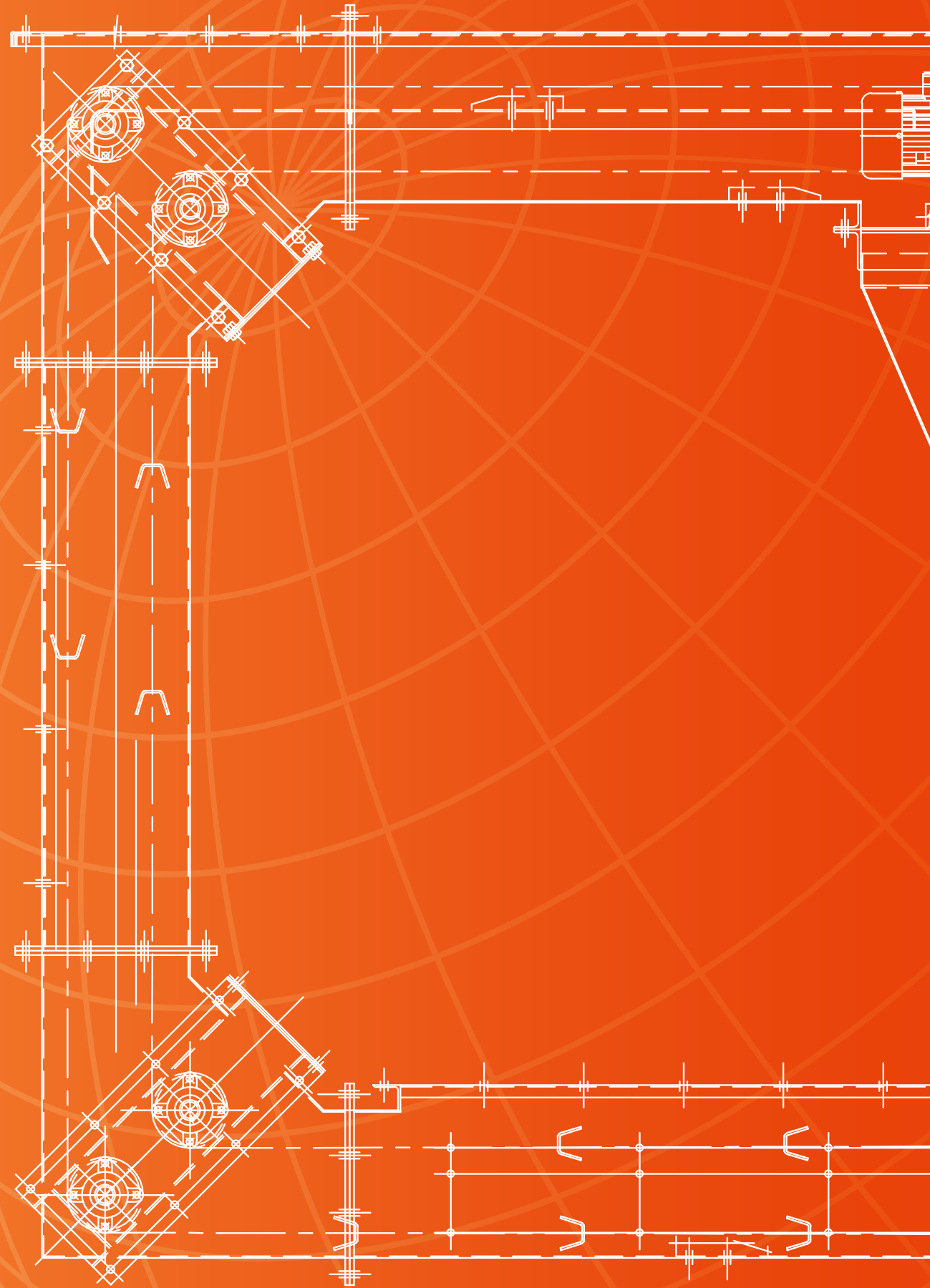


SPILLAGE CONVEYORS



19

140 - Our solutions



SPILLAGE CONVEYORS

19.1

CODE SPL



DESCRIPTION

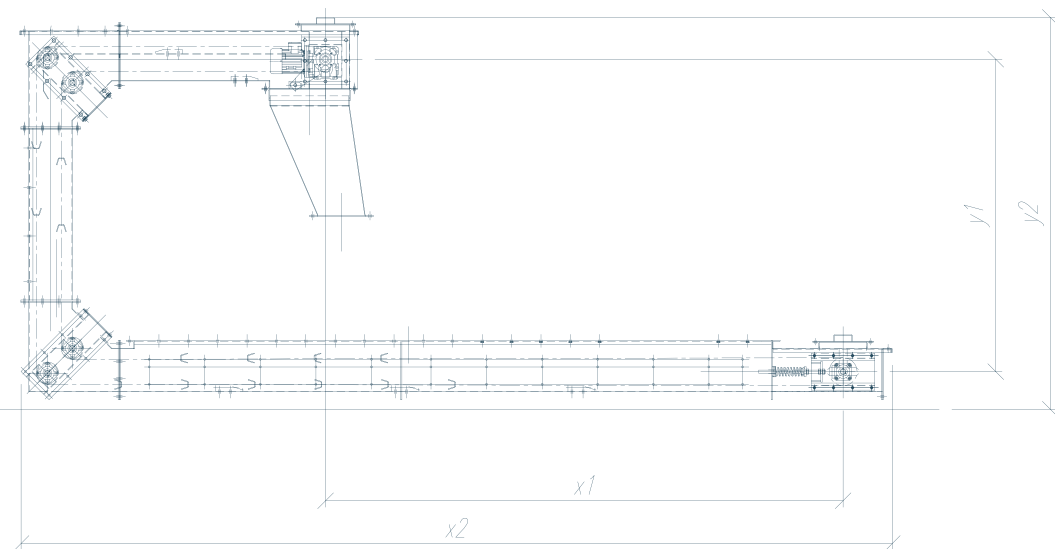
Field of use: Recovery of material dropped from belt conveyors or other types of conveyors and fed back into the main conveyor.

Technical description: U-shape conveyor, horizontal section collecting the spillage material, vertical- and unloading section, with round link chains, scrapers, curve deviations, gearbox.

Standard dimensions (width): from size 800 mm.

Versions: horizontal, inclined, U-shape.

Advantages: automatic cleaning and recycling of spillage material.



ENGINEERING

20



ENGINEERING 20.1

PLANT LAYOUT ENGINEERING, EQUIPMENT SELECTION
/ DESIGN AND SIZING, FLOW SHEETS AND P&ID, SITE
SURVEY AND SERVICE.



SKIP



21



SKIP

21.1

CODE SKIP



DESCRIPTION

Field of use: Discontinuous loading of furnaces.

Technical description: A bucket is lifted up to the top of the furnace and then the bulk material in the bucket is unloaded into the furnace. The bucket runs on rails and is lifted by a motorized winch.

Standard dimensions: bucket volume 1,5 m³; capacity 18 m³/hr.

Versions: inclined.

Advantages: automatic loading of the furnace.



GUARANTEED SPARE PARTS



22



HOW TO INQUIRY SPARE PARTS

22.1



01

Please send inquiry to e-mail:
sales@arcemi.com

02

Please mention in the inquiry:

- former order number if available
- type of conveyor
- conveyor assembly drawing number
- part position number
- description of spare parts
- requested quantity

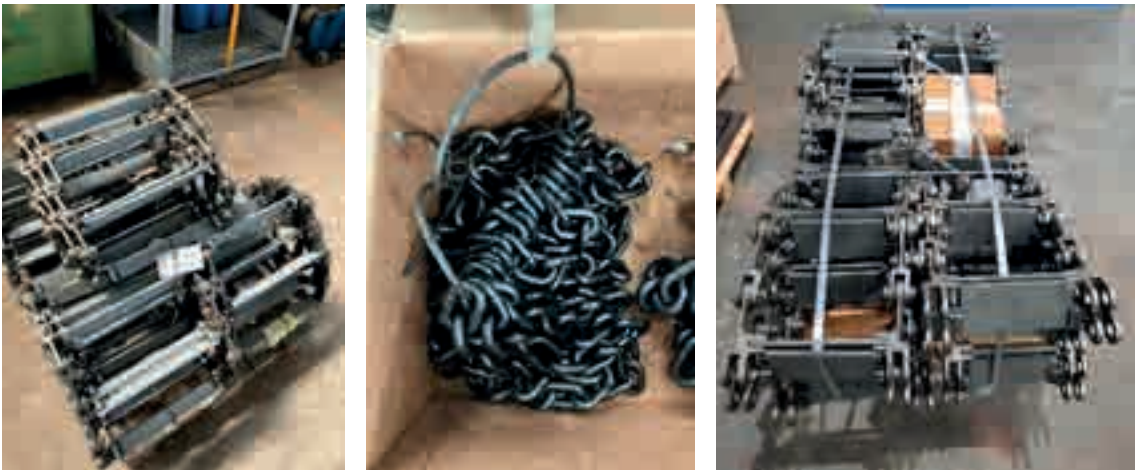
GUARANTEED SPARE PART ARCEMI AND GENERAL

22.2

SPROCKETS



CHAINS



BUCKETS



PANS



SCREW FLIGHTS



BELTS



VARIOUS



NOTES:





A member of
TRASMEC
GROUP

ARCEMI Impianti S.r.l.

Contacts

Tel: +39 0461 944 578

Email: arcemi@arcemi.com

Headquarters

Via Stazione, 27 - 38123
Trento (TN) - Italy

WWW.ARCEMI.COM