



SWORD

SAP Services Offering

JAN 2026

Europe & ME

SWORD
UPGRADE YOUR BUSINESS

AGENDA

Sword Group

Sword ERP

SAP Capability overview

End-to-End SAP & Cloud Transformation

SAP Services, Pricing & Engagement

SAP Services

S/4HANA Migration & Implémentation

Expertise



Sword Group

IDENTITY

Successful, Growing, Financially Secure and Listed



International Group founded in 2000



1000+ customers in over 50 countries



4 offshore / nearshore support centres



- Established in 17 countries | England, Belgium, Canada, Cyprus, Scotland, United Arab Emirates, Spain, United States, France, Greece, India, Lebanon, Luxembourg, Netherlands, Switzerland, Saudi Arabia, Australia

FY2025

Consolidated Revenue by Market

Aerospace, Defence, Health, Telco, Other 19.9%

Government, International Organisation 35.4%

Banking, Insurance, Finance 8.8%

Manufacturing, Energy, Utilities 35.9%



FY2024

Consolidated Performance

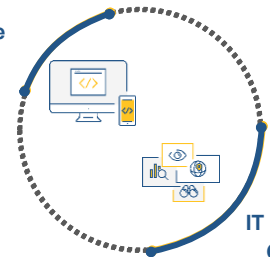


€358M Revenue

12% EBITDA

Software & Services

Software 10%



IT Services 90%

Group's Offer | Software Components & IT Services

SERVICES

Creating Value through technology & improvement

- Application Development
- Data & Analytics
- Content Services
- AI & Automation
- ERP
- Enterprise Service Management
- Cyber Security & Infra
- Managed Cloud Services

SOFTWARE COMPONENTS

Adding Value through innovative software components solutions

- SWORD** Beam Banking
- SWORD** TELL
- SWORD** VENUE
- SWORD** PHUSION

DIGITAL PERFORMANCE

Skills & expertise, to accelerate your digital transformation



DATA OPTIMISATION

Making Data Work Smarter

- Government
- Finance
- Aerospace & Defence
- Sport
- Energy
- Luxury Industry
- Transportation
- Health
- International Orgs
- Construction



12+ Years of ERP Expertise (Since 2014)
SAP | Oracle | Odoo



5 Countries | 24X7 Global Support

UAE, Lebanon, India, Cyprus, Saudi Arabia



60+ Certified Consultants in Oracle, Odoo and SAP



Trusted by Leading Global Organizations for ERP Support



€5M Annual Revenue



Luxury Industry



Aerospace & Defence



Sports



Energy



Finance



Transportation

Oil and Gas



Government



International Orgs



Construction



Health

SAP Capability overview

Enterprise snapshot and certification coverage

<p>Total Internal SAP Consultants</p> <p>33</p> <p>Team Size across regions</p>	<p>Certified Consultants</p> <p>23 </p> <p>~70% certification rate</p>
<p>NEARSHORE</p> <p>15 </p> <p>Lebanon Cyprus</p>	<p>OFFSHORE</p> <p>18 </p> <p>India</p>
<p>Total External SAP Consultants</p> <p>53</p>	<p>Certified Consultants</p> <p> 8+ Years</p> <p>Average Experience</p>



Key SAP Certifications

SAP S/4HANA Cloud Private Edition, Financial Accounting Certified Associate	SAP Enterprise Architect Certified Professional	SAP HCM for SAP ECC or SAP S/4HANA Certified Associate	Security Administrator Certified Associate
Database Administrator - SAP HANA Certified Associate	SAP S/4HANA Conversion and SAP System Upgrade Certified Specialist	Implementation Consultant - SAP S/4HANA Cloud Public Edition Certified Associate	Data Analyst - SAP Analytics Cloud Certified Associate
SAP S/4HANA System Administration Certified Associate	Implementation Consultant - SAP S/4HANA Cloud Public Edition - Sales Certified Associate	Implementation Consultant - SAP S/4HANA Cloud Public Edition - Sourcing and Procurement Certified Associate	SAP Fiori Application Developer Certified Associate

Blended delivery model ensuring certified expertise across all domains

FI-Financial Accounting	CO Controlling Management	MM Materials	SD- Sales and Distribution	PP Production Planning	Security and Basis	BW DATA Cloud Analytics	Fiori / UI5	ABAP	WM EWM Warehouse Management	HCM Success-factors



Advisory & Architecture

Business-led SAP roadmaps and value cases

Cloud strategy, target architecture, clean core

Integration & security architecture, data strategy

Outputs: Strategy, reference architecture, transformation plan



Implementation Excellence

SAP Activate: Discover → Run with quality gates

Greenfield • Brownfield • Bluefield delivery

Data migration, testing, and integration (API/ESB)

Scope: S/4HANA (Public/Private), core finance, logistics, manufacturing



Managed Services (AMS)

L2/L3 support, incident/problem/change management

Enhancements, releases, performance & security

24x7 global delivery with SLAs and clear KPIs

Models: Ticket-based • Dedicated • Hybrid • Managed (SLA)



Innovation & Continuous Value

SAP BTP extensions, Fiori/UI5, event-driven apps

AI and automation (SAP Joule, IRPA, ML, analytics)

Process mining, optimization, and value tracking

Continuous improvement: Implement → Run → Optimize → Innovate



Ecosystem

Integration Suite • Datasphere • SAC • SuccessFactors • Ariba.

Open Text • Data Lake • BTP applications • Cloud Based SAS

Seamless Integration: Data flow across SAP and non-SAP landscapes



Complimentary Services

SAP landscape and S/4HANA readiness assessment

Migration feasibility and high-level transformation roadmap

Outcome: Clear approach, risk visibility, and fast decision-making

S/4HANA Migration & Implementation Expertise



Compare approaches: Greenfield · Brownfield · Bluefield

Greenfield



New implementation · Fit-to-Standard · Clean core

When to choose

- Transform processes to best practices
- Retire legacy customizations
- Accelerate time to value with SAP content

Method

- SAP Activate with Fit-to-Standard workshops
- Process design, configuration, extensions on BTP
- Data migration from legacy systems

Tools

- SAP Activate
- Best Practices
- BTP
- Migration Cockpit

Outcome: Standardized processes, lower TCO, future-ready core

Brownfield



System conversion · Preserve data & processes

When to choose

- Minimize disruption and change impact
- Protect historical data continuity
- Accelerate path from ECC to S/4HANA

Method

- In-place technical conversion with remediation
- Simplification item resolution and testing
- Target clean-core policies post-go-live

Tools

- Readiness Check
- Simplification List
- CC Analyzer
- SUM/DMO

Outcome: Faster conversion with preserved business context

Bluefield



Selective migration · Modernize what matters

When to choose

- Keep proven processes, redesign others
- Phase by company code, plant, or module
- Balance speed, risk, and value

Method

- Value-driven scope and carve-outs
- Parallel tracks for build and selective data
- Clean-core extensions on BTP

Tools

- Readiness Check
- Migration Cockpit
- Data Services
- BTP

Outcome: Selective modernization with controlled risk

ECC to S/4HANA pathways · Tools & methodologies

Common enablers

- SAP Activate
- Testing (Unit · SIT · UAT)
- Cutover & Hypercare
- Integration Suite / APIs
- Security & Basis
- Data quality & governance

Questions



Thank you