



Leica Portugal



**LP INDUSTRIAL<sup>®</sup>**  
**SOLUTIONS**  
Member of Leica Camera Group



[www.leica.pt](http://www.leica.pt)





Leica Portugal

# Overview

- Location & Production Site Areas **03**
- Our History **06**
- Operational Areas **10**
- Opportunities **22**



Leica

Leica Portugal

# LOCATION & PRODUCTION SITE AREAS

LEICA PORTUGAL



# Leica Portugal | Location



Rua da Leica, 55  
4760-810  
Famalicão



## Vila Nova de Famalicão

Hometown of LEICA PORTUGAL



## Porto

Francisco Sá Carneiro Airport or simply Porto Airport is an international airport near Porto, located 20km and 30min from Vila Nova de Famalicão.



## Lisbon

Humberto Delgado Airport, also known as Lisbon Airport or Portela Airport, is an international airport located 350 km away from Vila Nova de Famalicão. This airport is the main international gateway.



## Faro

Faro Airport, also known as Algarve Airport, is located 585 km from Vila Nova de Famalicão.



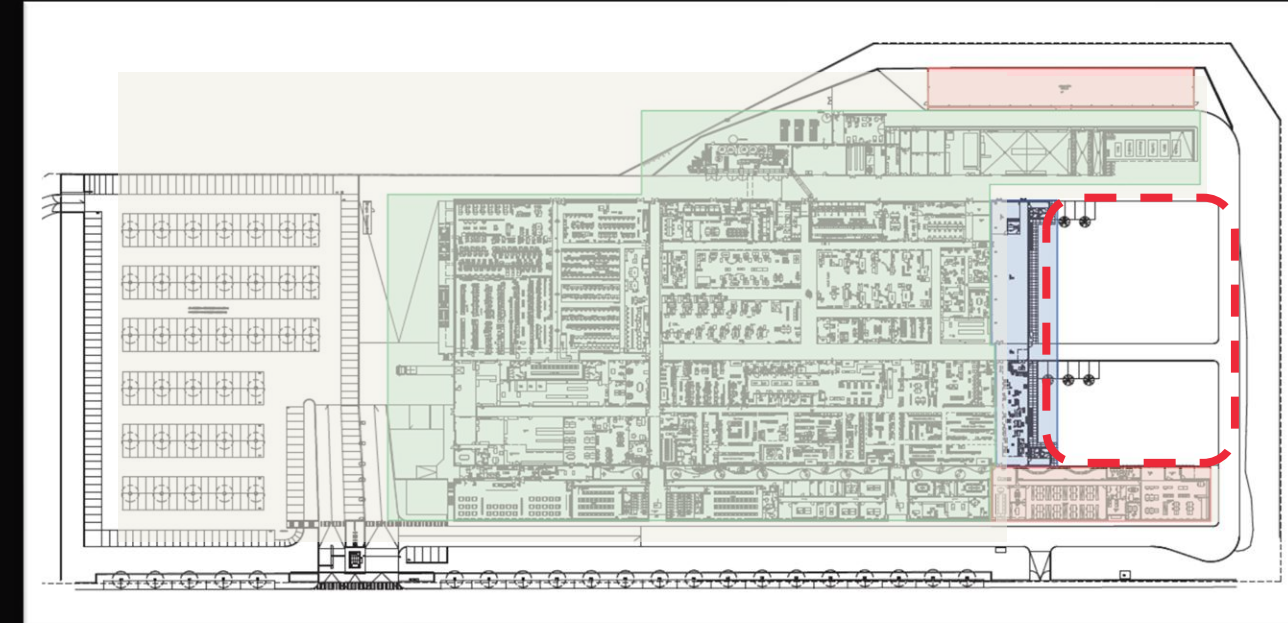
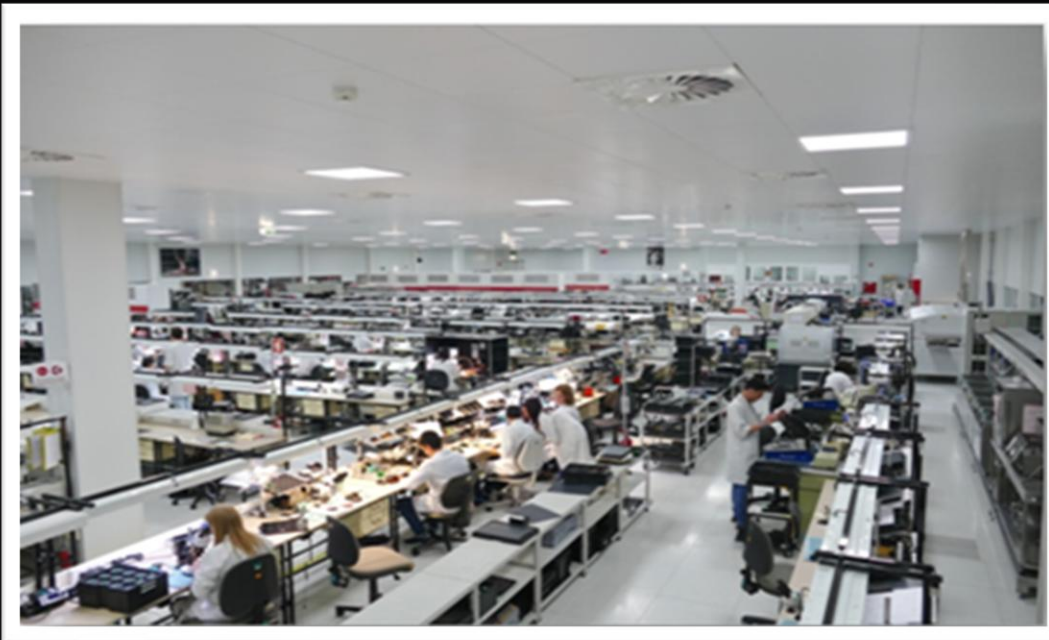
(~134,000 inhabitants)



Vila Nova de Famalicão has a clear entrepreneurial identity and an industrial tradition. It is now home to over 2,000 companies in several important industrial sectors, reaffirming our know-how and combining mastery of traditional crafts with cutting edge technology: textile & leather, agro-food, automotive industry and Metalwork.



# Leica Portugal | Production Site Areas



- ◎ Land 52.440 m<sup>2</sup>
- ◎ Production facility 18.100 m<sup>2</sup>
- ◎ Assembly & Cleanroom 3.100 m<sup>2</sup>
- ◎ Optics 3.500 m<sup>2</sup>
- ◎ Mechanics 4.900 m<sup>2</sup>
- ◎ Facility Management 2700 m<sup>2</sup>
- ◎ FREE AREA FOR EXPANSION 4000 M2

The Leica logo, consisting of the word "Leica" in a white, cursive script font, is enclosed within a solid red circle. This logo is positioned in the upper left corner of the image, which depicts a black and white photograph of a busy watchmaking factory. The factory floor is filled with rows of workstations, each equipped with a desk lamp and various tools and components. Several workers, primarily women, are seen focused on their tasks. The overall atmosphere is one of precision and industrial activity. A decorative graphic of multiple thin, red, curved lines flows from the top left corner across the top of the image, framing the logo and extending towards the center.

Leica Portugal

# OUR HISTORY

LEICA PORTUGAL

A decorative graphic consisting of multiple thin, red, curved lines that flow from the bottom right corner towards the center of the image, mirroring the design element in the top left.



# Leica Portugal | Timeline

**1973 - 1980**  
Extended Workbench

- Lenses and prisms production for microscopes
- Assembly of microscopes, binoculars and camera components
- Mechanical and Optical production
- R3 and R4 Camera



**1992 - 2000**  
Sports Optics ramp-up

- Initial production of laser Rangefinder: GEOVID BDA, LRF



**2013**  
NEW Production site

- Official opening of the new factory in Portugal



**2019**  
TRINOVID CLASSIC

- First Binoculars engineering and production in LCP



**April 2022**  
GEOVID PRO x32

- First Rangefinder fully developed and produced in LCP



**Jan. 2023**  
Launch FORTIS 6 1.8-12X42  
GEOVID PRO x42/x56

- First Riflescope fully developed and produced in LCP



**Jan. 2024** Launch CRF -R

- CRF fully developed and produced in LCP



**1980 - 1990**  
Production expansion

- Complete production of R5 camera
- Acquisition of the first CNC equipment
- M6 pre-assembly Transfer from Canada



**1997**  
Products upscaling

- ISO 9001:2015
- 1997 SAP Implementation
- R8 camera sub-assembly



**2009**  
Products upscaling

- First riflescope production
- Serial production subassemblies of M9, S2



**2015 - 2016**  
Business expansion

- Environmental Management
- Opening of the Leica Store Porto
- Start Leica SO Customer Care;
- Occupational Health and Safety



**Mar 2022**  
Business Development

- Official start of this Business Unit working for B2B



**Dec 2022**  
Launch GEOVID R x42/x56



**June 2023**

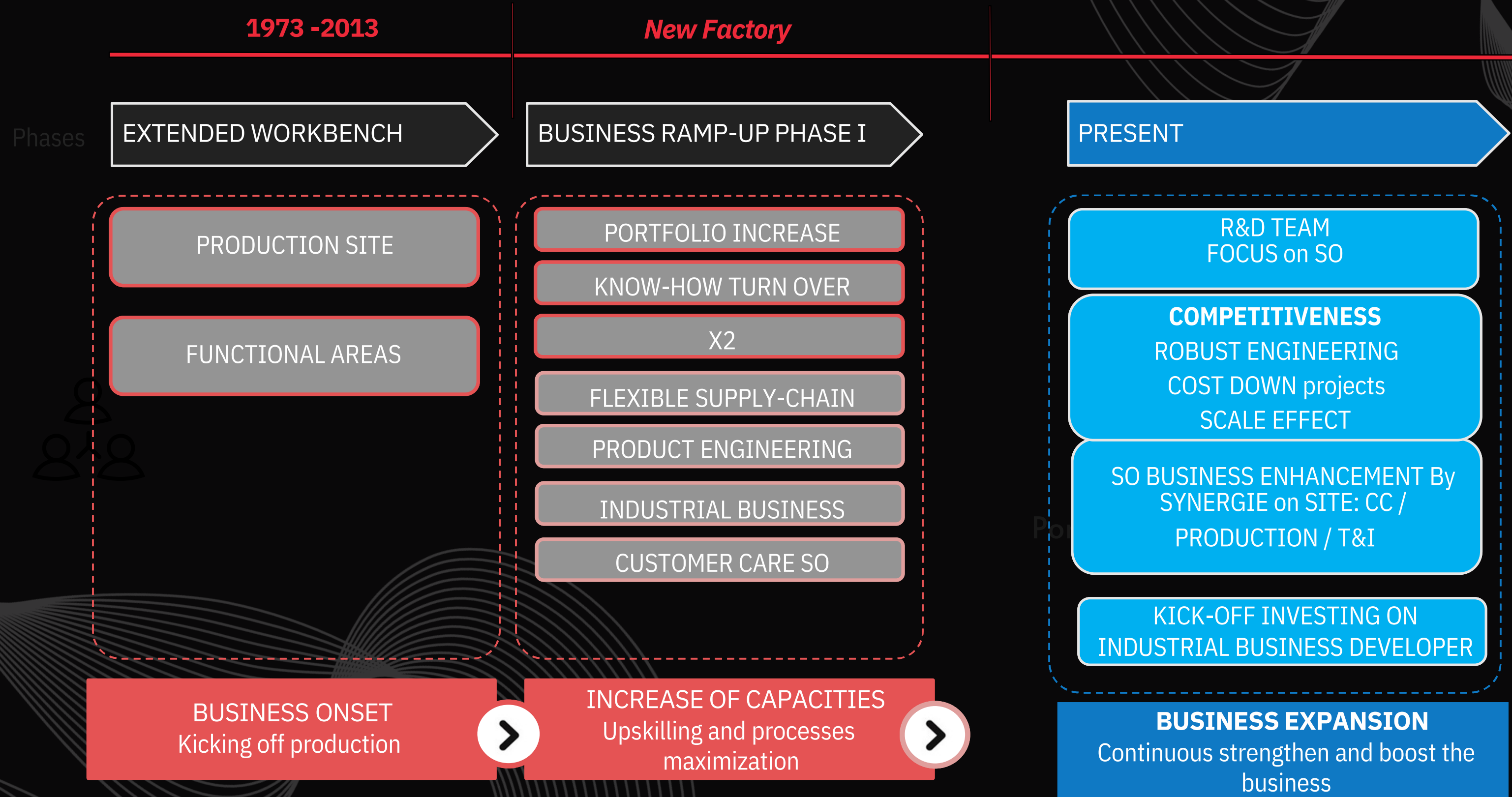


**July 2025**  
Launch APO Televid & Televid HD & eyepiece





# Leica Portugal | Evolution





# Leica Portugal | LP Industrial Solutions



**LP INDUSTRIAL<sup>®</sup>**  
**SOLUTIONS**  
Member of Leica Camera Group



Crafting Precision. Delivering Trust.

## 3rd party Portfólio



The Leica logo, consisting of the word "Leica" in a white, cursive script font, is enclosed within a red circular background. This logo is positioned in the upper left corner of the slide, with decorative red wavy lines extending from it across the top and down the left side of the image.

Leica

Leica Portugal

The background of the slide is a close-up photograph of a person's hand holding a large, faceted diamond. The diamond is held between the thumb and index finger, and its facets are clearly visible, reflecting light. The hand is positioned in the center of the frame, with the diamond being the primary focus. The background is blurred, showing what appears to be a white lab coat and a blue object, possibly a tool or part of a microscope.

# OPERATIONAL AREAS



# Leica Portugal | Operational Areas



## LOGISTICS

- PLANNING
- PURCHASING
- WH MANAGEMENT
- PACKAGING
- IMPORT/EXPORT



## MECHANICS

- TURNING AND MILLING
- ENGRAVING
- 3D-PRINTING
- SURFACE TREATMENT
- MACHINERY



## OPTICS

- PRODUCTION OF OPTICAL COMPONENTS
- COATING
- CEMENTING
- MACHINERY



## ELECTRONIC

- ELECTRONIC ASSEMBLIES
- QUALITY CONTROL



## ASSEMBLY

- BINOCULARS AND LASER DEVICES
- RIFLE SCOPES
- CAMERAS (DIGITAL AND ANALOGUE)
- LENSES

OPTOMECHANICS FOR THIRD-PARTIES  
ADAPTERS/HANDGRIPS



## ENGINEERING (T&I)

- MECHANICAL DESIGN
- OPTICAL SYSTEMS DESIGN
- ELECTRONIC DEVELOPMENT
- PROJECT MANAGEMENT



## CUSTOMER CARE SO

- BINOCULARS
- SPOTTING SCOPES
- RIFLE SCOPES
- RANGEFINDERS
- THERMAL CAMERAS





# Leica Portugal | Mechanics

High Precision Mechanics | Special Surface Treatments | Manufacturing of Special Materials | High Flexibility

## TURNING & MILLING

Aluminium, Magnesium, Brass, Titanium, Steel  
Mechanical precision parts  
from 2mm to 300mm, up to IT5 quality grade



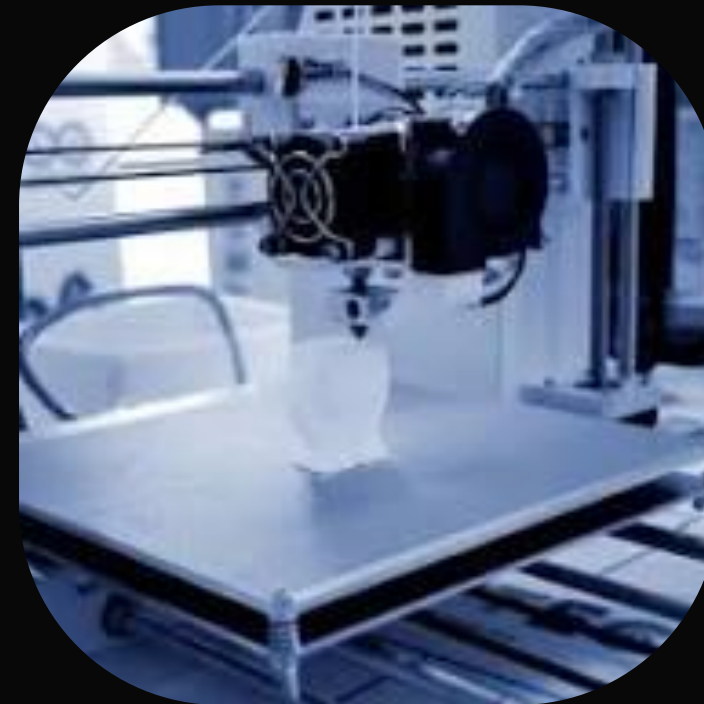
## ENGRAVING

5 axis Laser and milling Surface Mapping  
Contact measurements to ensure  
uniform depth of engraving



## 3D PRINTING

FDM - Fused Deposition Modeling



## SURFACE TREATMENT

Anodizing Chrome-plate  
Painting  
Cataphoretic Paint  
Blue Pickling (oxidation of brass)





# Leica Portugal | Mechanics

High Precision Mechanics | Special Surface Treatments | Manufacturing of Special Materials | High Flexibility

STATE OF THE ART  
TECHN

## MACHINERY

Gildemeister: TWIN65/BETA800 4A/CTX BETA 800/DMU40  
Benzinger: GOfuture  
Chiron: FZ12W / FZ15W  
Makino: A51NX / A40  
Index: G200

## STATE OF THE ART TECHNOLOGY

Okuma Multus U4000 - technological evolution (Mill-Turn) -  
Multi-tasking Versability  
Shopfloor - Digital integration with ERP systems & Productions  
records (100 employees' interaction / 30 access points)

## METROLOGY

3D Scanning GOM CMM  
Leitz Reference Digital  
Microscope Optiv



LEICA PORTUGAL



# Leica Portugal | Optics

Spherical Optics (lenses) and Plan Optics (prisms) | Design and production of complex coatings (PVD)  
Manufacturing wide range of glass types | Automatic Adjustment in Optical Cementing | Opto-Mechanic Development

## PRODUCTION OF OPTICAL COMPONENTS

Glass (280 different types of glasses)  
Spherical lenses: diam. 7mm to 90mm  
Center thickness  $\pm 0,02\text{mm}$   
Polishing Grade P4 standard  
Prisms with edge lengths from 5mm to 100mm  
Angle tolerance around 2" for dachkant (expertise 90°) with glass blocks and 1' for others (tighter tolerances can be discussed)

## CEMENTING

Cementing and cosmetics of optical systems

## COATING

Anti-reflection, beam splitter, IR, laser protection, mirrors, metallic, dielectric, Black Chrome  
Aquadura

STATE OF THE ART  
TECHN



LEICA PORTUGAL





# Leica Portugal | Optics

Spherical Optics (lenses) and Plan Optics (prisms) | Design and production of complex coatings (PVD)  
Manufacturing wide range of glass types | Automatic Adjustment in Optical Cementing | Opto-Mechanic Development

## MACHINERY

Schneider: SCG100CNC / SLG120-S2/1 / SLG301 / ALG200CNC / SLP120-E / SP20 / SPS / SLP50-S2/2 / ZM 200 / SLC40 / SLC 50  
Satisloh: PR150  
Optotech: PKS 250 / SMP 501 / SM100CNC / SM80CNC / SPO30 / SPO80 / SPO100  
Interferometer Optotech: OWI 100/ OWI 150 XT/ OWI 100 ECO  
Stock Konstruktion: RSP40

## STATE OF THE ART TECHNOLOGY

Trioptycs Opticentric OC01  
White Light Interferometer NewView 600  
SYRUS PRO / APS PRO 1104-Retrofit / A700-Retrofit

## STATE OF THE ART TECHN





# Leica Portugal | Electronic Production

Both, Automatic and manual soldering processes available | Very high flexibility | Wide range of Boards | State of the Art Technology

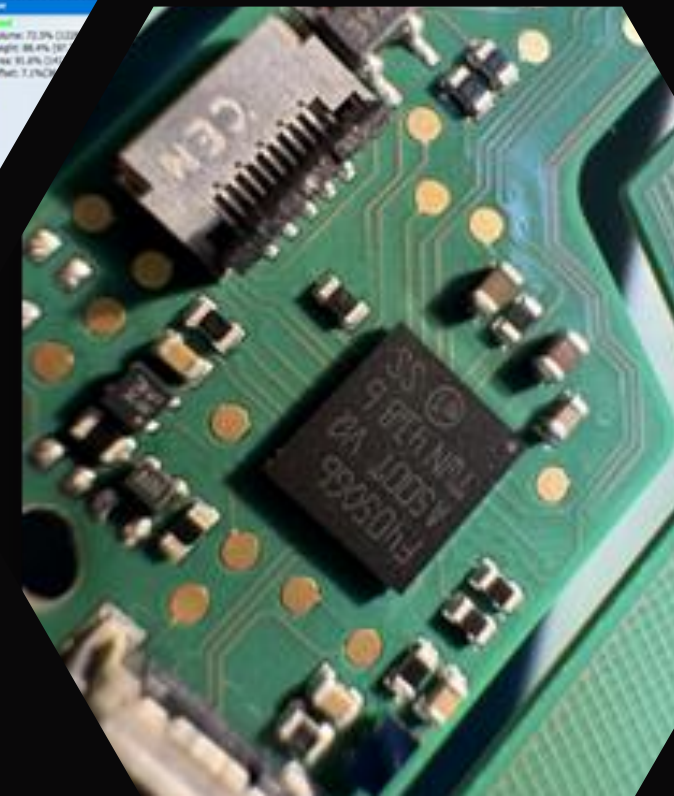
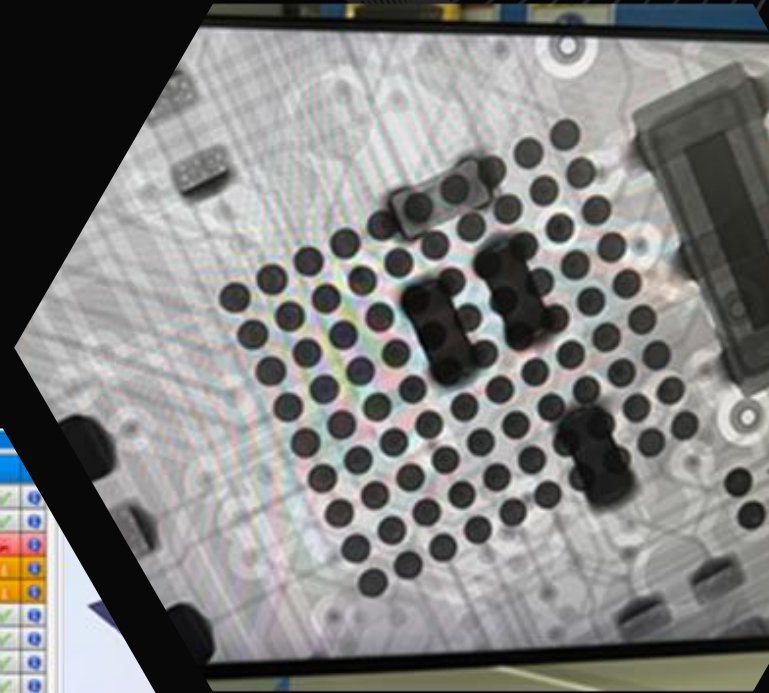
STATE OF THE ART  
TECHN

## SMT ASSEMBLY LINE

- Automatic Soldering Processes
- Manual Soldering
- Rigid, flex-rigid and flexible boards
- Working with fine pitch Bga's (300µm)
- Flexibility to work with small batches

## STATE OF THE ART TECHNOLOGY

- SPI Machine - Soldering Paste Inspection
- X-Ray Machine to analyse the product
- AOI - Automatic Optical Inspection
- EKRA - Automatic Soldering Paste Printer
- SPEA - In Circuit Test





# Leica Portugal | Assembly

High skilled Craftmanship Assembly | State of the Art Technology | Opto-Mechanical Competence  
Full integration and qualification for "Made in Portugal" Products | Special Editions

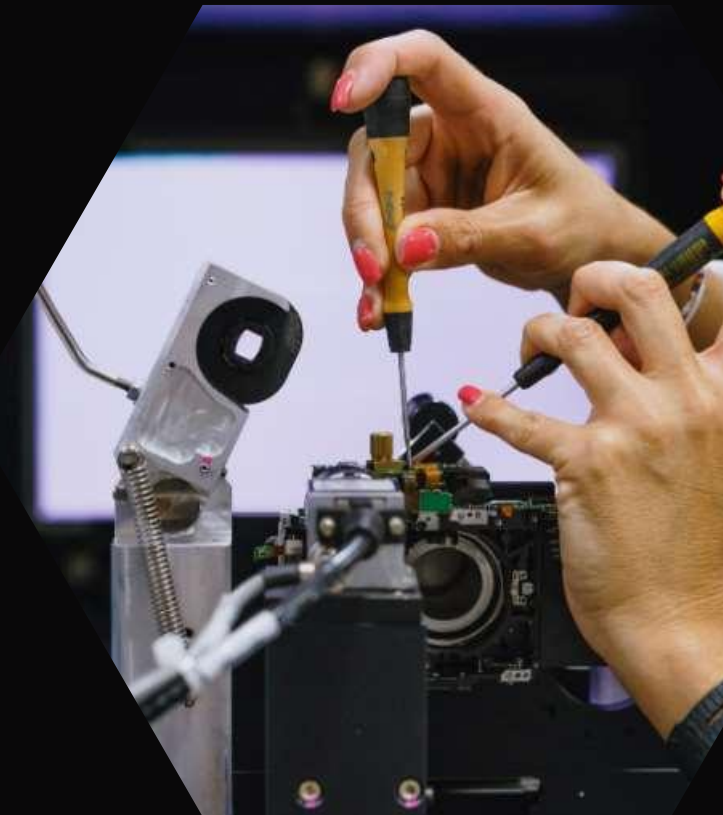
## PRODUCT ASSEMBLY

Binoculars and laser distance measuring devices Riflescopes  
Cameras (digital + analogue) Lenses (M/SL) Thermal  
Camera (sub-assembly)

## THE ASSEMBLY ROOM

3000m2 of laminar airflow + positive pressure  
ISO 8 clean room class 100.000 Ideal for Aeronautics;  
electronics; medical; automotive; defense industry

STATE OF THE ART  
TECHN



LEICA PORTUGAL



# Leica Portugal | Assembly

High skilled Craftmanship Assembly | State of the Art Technology | Opto-Mechanical Competence  
Full integration and qualification for “Made in Portugal” Products | Special Editions

STATE OF THE ART  
TECHN

## PROCESSES

Cleaning of lenses for cameras and scopes  
Assembly of opto-mechanical devices for 3rd party customers  
Assembly of opto-mechanical Sub-Assemblies for LCAG products  
Adapters / Handgrips / Accessories

## STATE OF THE ART TECHNOLOGY

Stern Test - Optical axis alignment  
Opticenter - Opto-mechanical dimensioning  
MTF - Resolution and contrast test  
Ramitech - Mechanical focus alignment  
Air shower - Decontamination process by entering the cleanroom (Assembly)



LEICA PORTUGAL



# Leica Portugal | Engineering (T&I - Technology and Innovation)

Cross-functional with LCW | R&D on Rangefinding as Technology owner | Boosting with Industry / Academy partnership | Integration of CC and Production

## ELECTRONIC DEVELOPMENT

- Electronic System Architecture definition
- Electronic circuit simulation and schematic design
- PCB layout design
- Hardware design
- Embedded software (firmware) development
- Test and Measurements of electronic devices and circuits

## OPTICAL SYSTEM DESIGN

- Optical concepts definition and simulation (Zemax software)
- Monte Carlo calculation
- Stray light analysis

## STATE OF THE ART TECHN

## MECHANICAL DESIGN

- CAD design
- Product Lifecycle Management
- Design for cost
- Design for Manufacturing
- Aluminium and magnesium casting
- Aluminium, brass and titanium machining
- Plastic, rubber injection molding



LEICA PORTUGAL





# Leica Portugal | Engineering (T&I - Technology and Innovation)

Cross-functional with LCW | R&D on Rangefinding as Technology owner | Boosting with Industry / Academy partnership | Integration of CC and Production

STATE OF THE ART  
TECHN

## INDUSTRIAL ENGINEERING

- Products prototyping
- Industrial process design
- Tools and equipment design
- Standard work definition and working instructions
- Process / Cost optimization | 6 Sigma

## PROJECT MANAGEMENT

- Coordination of all stakeholders in each stage (End to End)
- Scope, timeline and budget definition
- Risk analysis
- Quality, timeline and budget control



LEICA PORTUGAL





# Leica Portugal | Customer Care Sportoptics

Strongly connected to Production | Integration on the Product Development Cycle | Service and Client Support

STATE OF THE ART  
TECHN

## SERVICE & CLIENT SUPPORT

Repair center for SO worldwide  
Fast and effective communication / response in English /  
German and Portuguese for customers all around the world  
Arrangement of Pick-Up services inside the EU

## TECHNICAL REPAIR

Binoculars  
Riflescopes  
Spotting scopes  
Rangefinders  
Thermal cameras

## SPARE PART SUPPLY TO OTHER LEICA REPRESENTATIVES

Leica Camera AG  
Leica USA  
Leica Switzerland

## ENGINEERING & TECHNICAL SUPPORT





Leica Portugal

# OPPORTUNITIES

DMU 40 eVo *linear*

DWG MORI

5-Axis Champion DECKEL MAHO



# Leica Portugal | Opportunities

For what kind of applications can we be an asset?

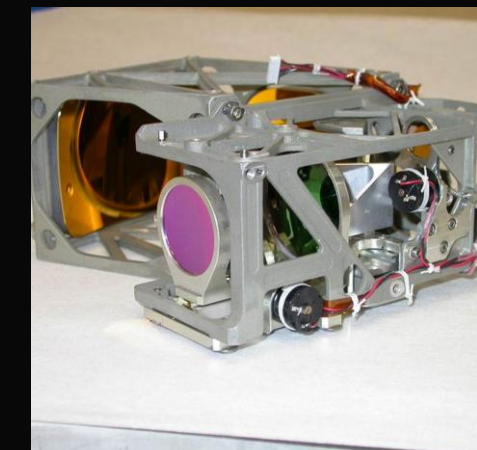
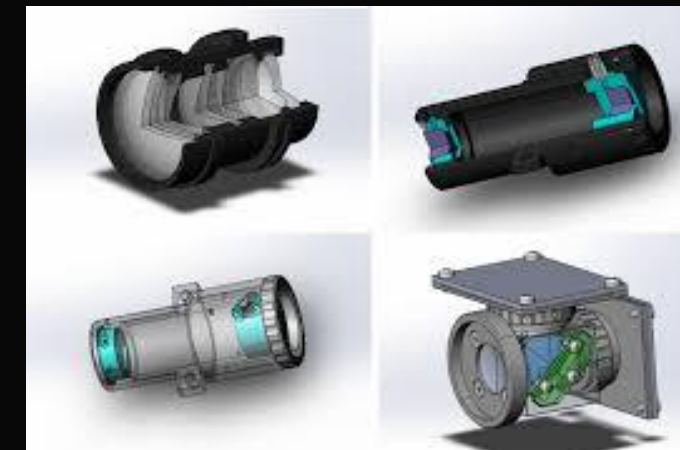
STATE OF THE ART  
TECHN

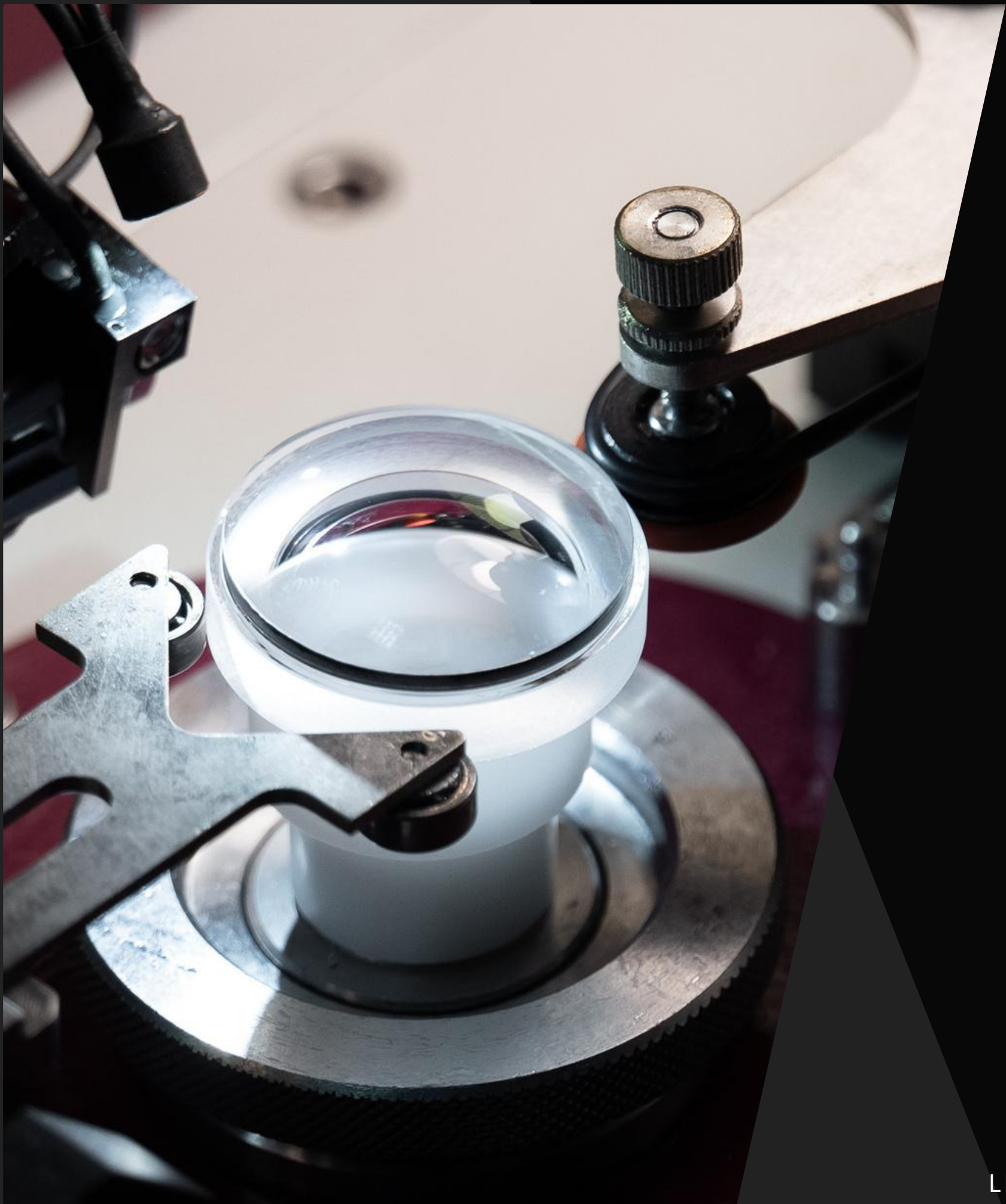
- High-precision optical systems (lenses, prisms and assemblies);
- Optomechanical integration suitable for platforms across air, land, maritime and space domains (defence);
- Custom optoelectronic subsystems designed for rigorous operational environments;

With extensive experience in the development and manufacture of precision opto-mechanical and opto-electronic subassemblies, designed for demanding environments and applications, we position ourselves as a European technology partner with:

- Installed capacities for serial production in Portugal;
- Proven expertise in precision engineering for dual-use markets: security, defence, space, medical, consumer and advanced industry;
- Expertise ruggedness, optical and mechanical integration.

Example of opto-mechanical products with and without electronics/motors in which we could produce all components in our factory, from optics, mechanical components and assembly:





Leica Portugal

# Danke/Thank You

Contact Us



+351 96 576 61 26



daniel.vultos@leica-camera.com



www.leica.pt



LEICA PORTUGAL