



Brief presentation of the company

Edited by:
Giuseppe Maffeis
Alessia Goffi

Contacts:
g.maffeis@terraria.com
a.goffi@terraria.com

TerrAria Srl
via M. Gioia 132, Milan, Italy
www.terraria.com

OUTLINE



TerrAria presentation

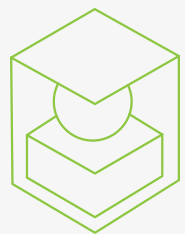


Expertise R&D projects



Energy topic: possible synergies

TerrAria boasts over twenty years of experience in the platform development at the service of the environmental sustainability and energy transition. The faceted ability and experience gained by our innovative SME ranges from advanced geographic IT solutions and skills to develop tools and reports in the air quality-decarbonisation, EIA-SEA, strategic climate transition, civil protection.



TerrAria is an innovative SME since 2016

Today it can count on the contribution of a close-knit and multidisciplinary team of 20 collaborators with articulated skills

Who we are?

**The company
was founded in
Milan in 1999**



Giuseppe Maffeis
CEO

What do we do?

The company is structured in three areas



Governance and Environmental Energy Models

It deals with the estimation of the environmental impacts of human activities, **supporting policy makers** in defining reduction, mitigation and compensation policies for pollution and energy efficiency, through the implementation of **forecasting models** and **energy-environmental balances**.



Software Design and Development

The IT area develops **tailor-made** web application, **decision support systems** (DSS), **open source** oriented and multi-platform solutions, and **WebGIS** which represents the ideal platform and channel for the provision of geo-referenced services (thematic maps).



Research and Development

TerrAria is very active in building partnerships for European and Regional calls. In fact, it has participated and participates in groupings with other partners (ARPA, universities, private companies, etc.). **TerrAria has won more than 10 European tenders/projects** to date: LIFE, ESA, ECMWF, UIA, IEE, Interreg and FP7.

OUR EXPERTISE: MOST RELEVANT R&D PROJECTS

2015

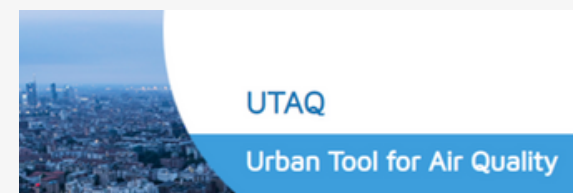
IRIS
LIFE



Adaptation measures
Climate risk
Industrial sectors
Risk assessment
Screening

2018

UTAQ
CAMS



Air quality
Urban tool
CAMS use case
Forecast model

2018

AIR-HERITAGE
UIA



Air quality
Citizens
DSS
Urban scale forecast
model

2020

EPICO19
ESA



Machine learning and
forecast model
Satellite images
Health care
Epidemiology

2021

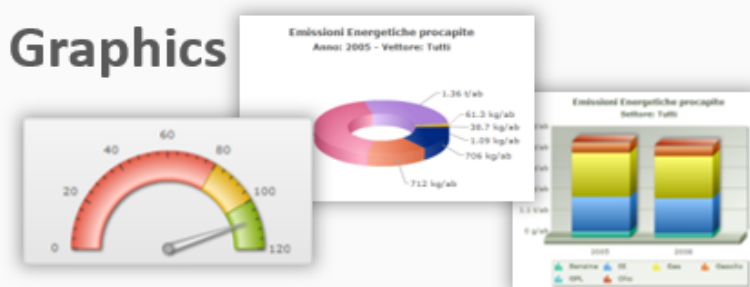
REMY
LIFE



Air quality
Guidelines
Models
Emission uncertainty
assessment



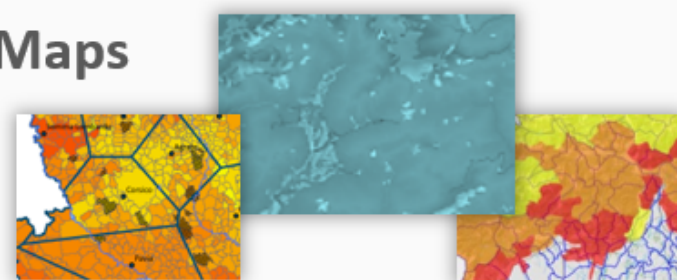
Graphics



Report



Maps



www.co20.it

Energy manager & CO20

We provide energy efficiency consulting to **support energy management for local administrations**. **CO20** is an innovative and advanced tool, created in 2011 to support the membership to the Covenant of Mayors process. **CO20** is used by **more than 300 municipalities** throughout Italy for their SECAP (Sustainable Energy and Climate Action Plan), energy-emission inventories, efficiency and RES actions to achieve and monitor the EU target for 2030.

CENED & CEER

TerrAria designed and developed the graphic interface of the **Lombardy Region energy certification** CENED+2.0, to produce the Energy Performance Certification of new or existing buildings. Moreover, TerrAria manages the development, maintenance and technical assistance services for the **Energy Buildings Database** (CEER) and its statistical analysis based on the data collected (Business Intelligence).



<https://www.cened.it/>

CURIT

**CATASTO UNICO
REGIONALE
IMPIANTI TERMICI**



CURIT

TerrAria develops and maintains the Thermal System Database (CURIT), Lombardy Region's database for the **collection and management of data on all thermal plants** to heat or cool buildings. Thanks to the platform, it is possible to **monitor and analyze the continuously updated regional thermal plant park** both in terms of consistency and energy and environmental performance through a business intelligence approach.

<https://www.curit.it/>

ERGAPP

ERGApp is Web tool developed by TerrAria that **supports the Energy Manager in all the steps of the energy audit**: energy consumptions analysis, calibration of the energy model and definition of efficiency actions. It is linked to a **energy consumption monitoring system**, through which it is possible to display data in real time, set alarm thresholds and benchmark KPIs.



<http://www.ergapp.it>



Contacts

ricercaesviluppo@terraria.com

g.maffeis@terraria.com

a.goffi@terraria.com

TerrAria Srl

via M. Gioia 132, Milan, Italy

www.terraria.com