

INSPECTION CONVEYOR **AMV-B-2S2L**

 **argutec**[®]
have a vision



Inspection conveyor AMV-B-2S2L

The sophisticated inspection conveyor is designed for maximum efficiency and reliability in the production process. This innovative product features three conveyor belts and cutting-edge technology to ensure precise product inspection.

Easy handling
thanks to
the six-wheel
design

Automated transport
and control

AI-assisted
evaluation

Double-sided
inspection

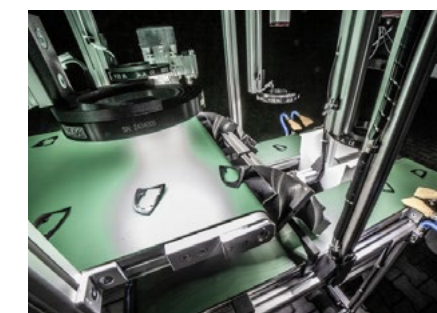
Automatic sorting

The inspection conveyor is the ideal solution for modern production lines where the focus is on quality, reliability, and efficiency. It increases inspection accuracy and reduces defective products, leading to customer satisfaction and increased competitiveness.



Transport and inspection

Products are placed on the first conveyor belt, where they undergo a first visual inspection. An integrated camera, protected by a durable aluminium enclosure, scans the product surface and checks for potential defects.



AI evaluation

Thanks to the advanced AI system ArgutrackDNN, each product is thoroughly analyzed. The results of the inspection determine whether the product meets the required standards or is identified as defective.

Two-sided inspection

After the initial inspection, the product is rotated using appropriate technology, such as a slide with a vibration mechanism, allowing inspection from both sides. Subsequently, another camera system inspects the other side for more reliable results.

Automatic sorting

Defect-free products continue in the production process, while defective pieces are automatically sorted using various technologies, such as air nozzles or a piston mechanism, to quickly and accurately separate defective from defect-free products.

The rotation and scrapping of
parts can be modified as required.

System key features and modifications

The inspection conveyor is primarily designed for the visual inspection of products placed on a belt by a robot, for example in the plastics industry, and allows inspection of products from two sides. The system can detect visual defects on the surface of products, with a standard evaluation speed of 50 ms per image. The conveyor is equipped with two motors powering two belts and is

controlled by a Neosys industrial computer with a GPU for image processing. The system is also flexible, allowing for various modifications such as single-sided inspection, multi-sided inspection of more complex products after consultation, or other mechanical and optical modifications to meet the specific needs of different products.

COMPLETE ELECTRONICS

Complete electronics

The system is equipped with complete electronics, including reliable motors and cameras that ensure smooth and accurate operation of the conveyor and inspection process.

Aluminium framework

The conveyor is made of aluminium, which ensures high strength while maintaining low weight. This makes the framework not only durable but also easy to handle.

ALUMINIUM FRAMEWORK

Easy handling

The wheels make the entire conveyor easy to move, allowing flexibility within the production line.

EASY HANDLING

Simple installation

The installation of the conveyor is simple and does not require complicated interventions. Just connect it to the network, and the system is ready for immediate use, streamlining activation

Powerful hardware and AI evaluation

Technologies that ensure the reliability and accuracy of the inspection conveyor include

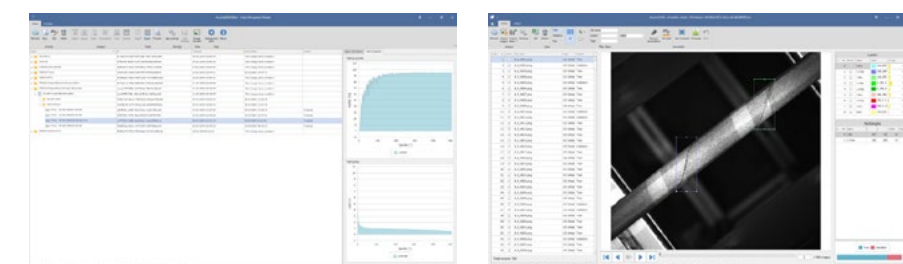
robust camera protection, powerful Neosys industrial computers with GPUs, and integrated lighting for inspection. Together with the

intelligent automated image evaluation tool ArgutrackDNN, they create an efficient system that meets the highest standards of industrial inspection.

ArgutrackDNN – Learning at every step

ArgutrackDNN is an advanced AI tool that provides automated image evaluation using deep learning. The system is designed to learn efficiently in a few simple steps and can be adapted for different industrial tasks. From

data collection to final analysis, it ensures accurate results and minimizes the need for manual intervention. This tool not only increases the speed of inspection but also significantly reduces the risk of errors.



The entire learning process is carried out in only 4 steps. argutrack.eu

Camera protection

The cameras are protected by sturdy aluminium enclosures for industrial environments and can withstand harsh operating conditions, ensuring long life and trouble-free performance.

Lighting for inspection

The system features integrated lighting that creates ideal conditions for inspection, ensuring accurate product illumination and allowing detailed surface inspection without compromise.

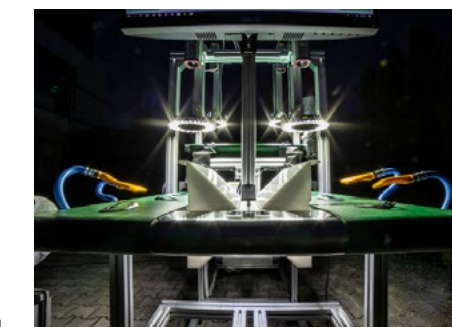
The standard evaluation speed per image is **50 ms**.

Powerful IPC Neosys

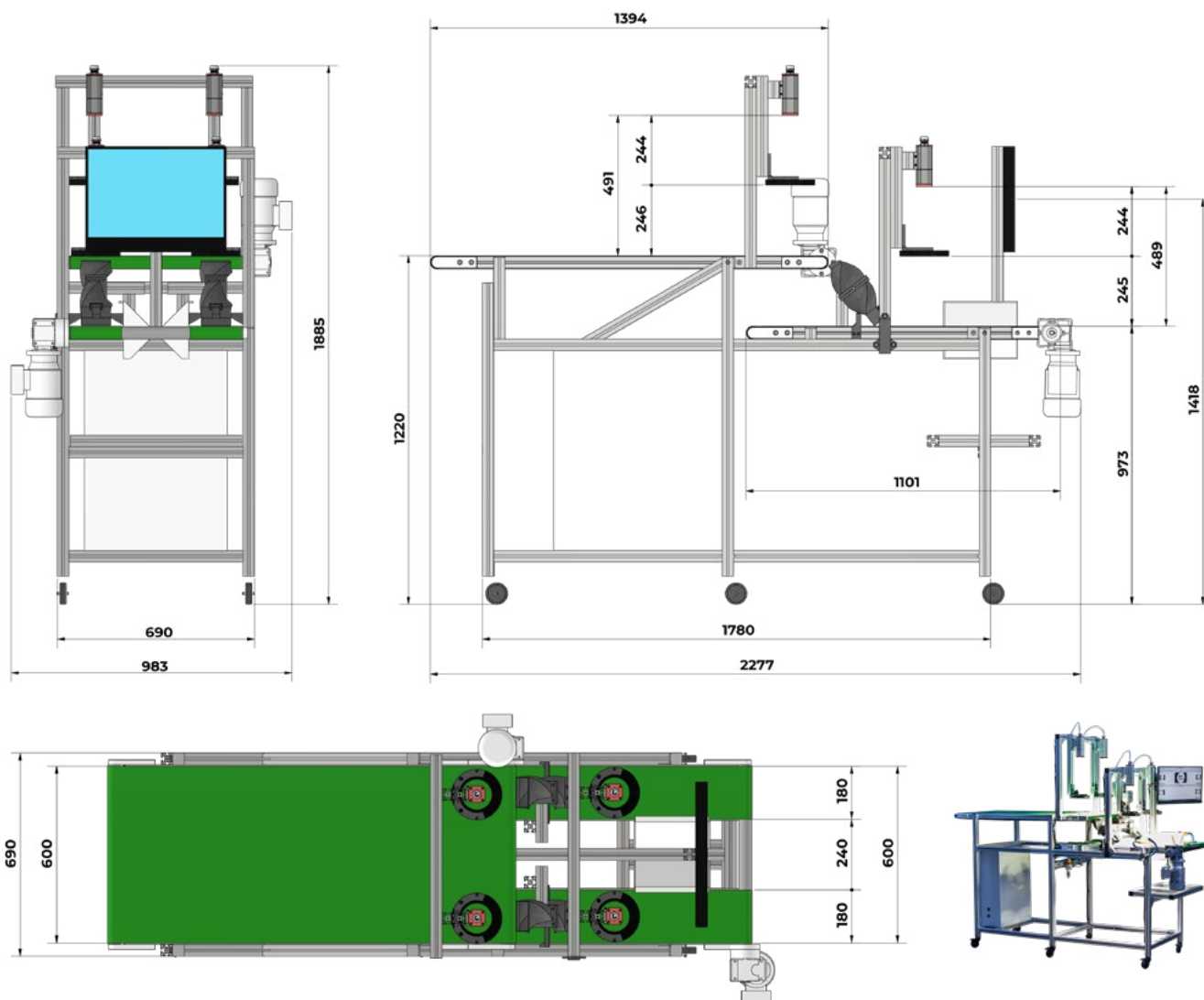
A powerful Neosys industrial PC is used to evaluate the inspection data. It is equipped with a GPU for fast image processing, which increases the efficiency of the entire system and enables fast defect detection.



CH50 enclosure eshop.argutec.eu



Product dimensions



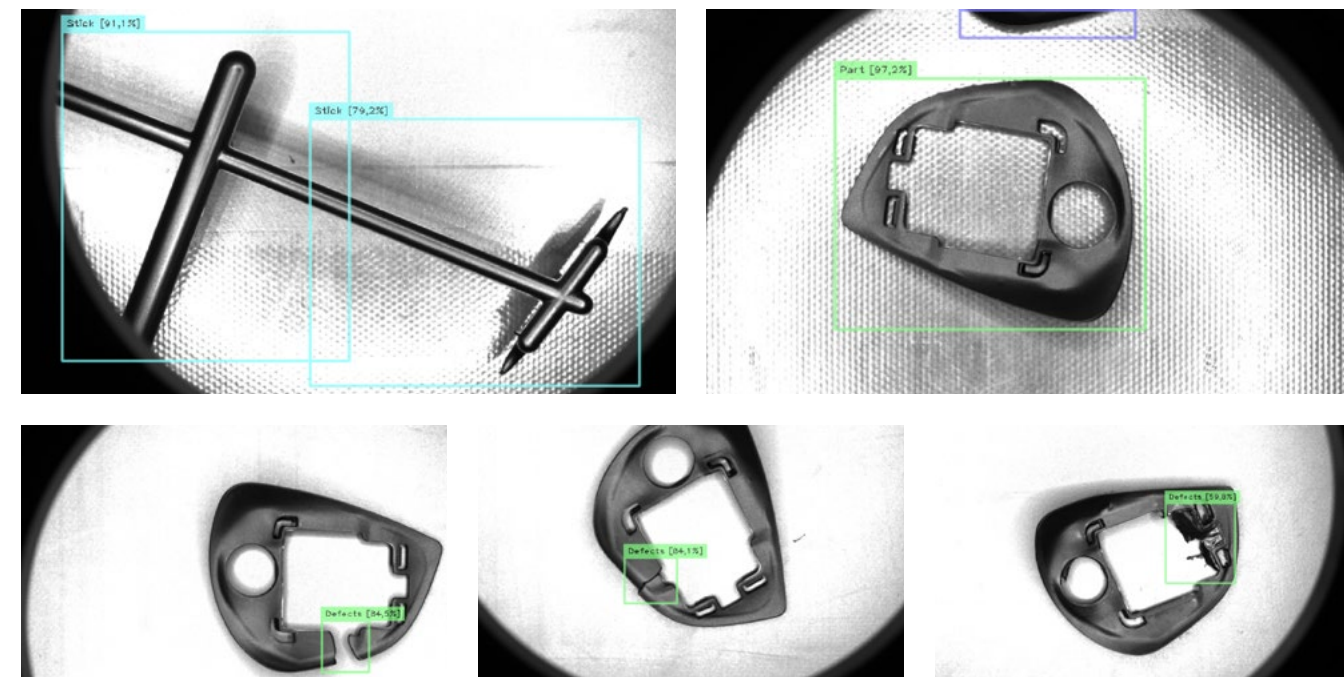
Standard conveyor dimensions.

AMV-B-2S2L

Product photo

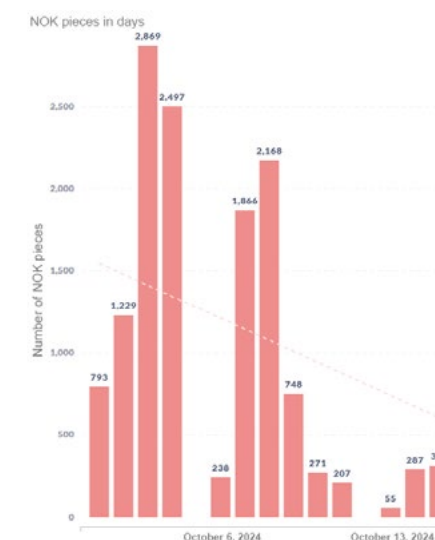


Software exhibition – detection, application, statistics, defects



Accurate part detection and defect capture.

Detection, defects



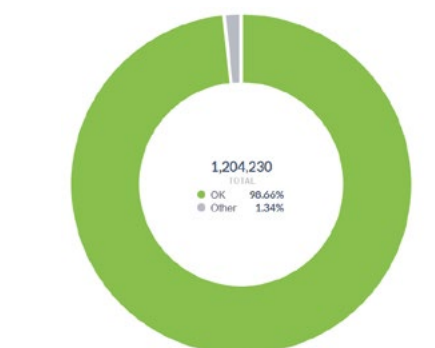
Overview of defects.

Statistics



Overview of parts and quality status

Operator application



OK and NOK statistics.

Statistics



Long-term production and quality overview.

Statistics

Argutec, s. r. o.

Na Nivách 1339/4
700 30 Ostrava-Zábřeh
Czech Republic

www.argutec.eu