

Connecting Metal through Motion and Innovation

Our History

1992

Oil trading & logistics company
"Petrotrans SIA"
incorporated in Latvia

2004

Business & management consultancy company begins its strategic investments and operations in the CEE

2010

Oil & gas and renewable energy corporation
"Energoimpex SA"
opens up in Switzerland, expanding into the global arena

2011

Full ownership and financing of a metalworking facility in the port city of Ventspils, Latvia, **"Parkit SIA"**

2014

Major investments into technology and state-of-the-art equipment, partnering with Haas Automation

2021

Export metal division is established in Latvia
"Energoimpex SIA"
focussing on SCM services and export-oriented operations in Europe's manufacturing industry

- **Our people** are experienced professionals, priding themselves on their extensive **30-year journey** in the world's utmost demanding industries

Who We Are Today

We are split into **3 main business units**:

- I. Commodities - oil & gas, renewables, ferrous and non-ferrous metals trading and logistics
- II. Thermal ceramics - bio-soluble ceramic fibre production for furnace, foundry and refinery linings
- III. Metal** - contract manufacturing and supply chain services for the metalworking industry

As true entrepreneurs we have diversified our business portfolio and we are continuously developing new projects

ENERGOIMPEX METAL is one such example and it has been formed as a countermeasure against the present and future supply chain pressures

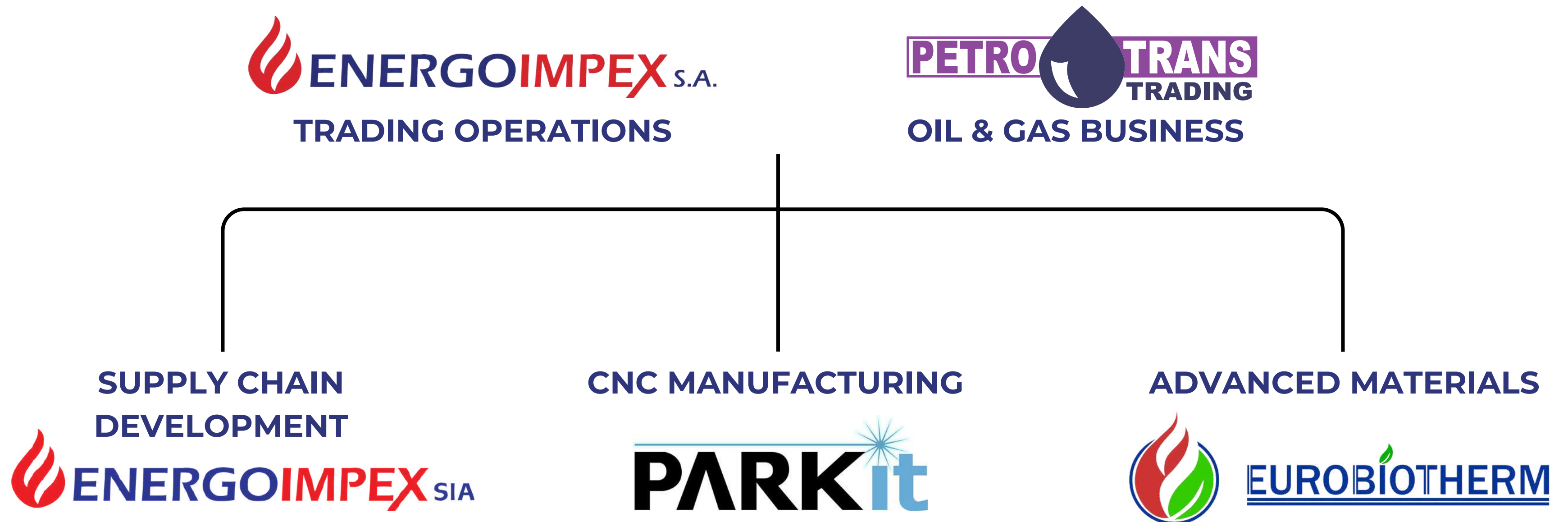
We aim to accelerate the transformation to a more connected world, building sustainable partnerships and operating close to our customer markets

We are your Metal Industry Partner, always in Motion and with open Innovation

Cluster of Strategic Partnerships

Together our *Group of companies* serves the needs of **local** and **global manufacturing**.
Our made, traded and sourced products are used in automotive, machine building,
mechanical engineering, energy, oil & gas, process and general industry sectors.

Our Structure:





Mission Statement

To connect unlimited manufacturing capacity with boundless engineering creativity:

- Maximise production by empowering internal and external stakeholders to collaborate and engage effectively with one another, acting as the one-stop service provider for all of customer's technological needs
- Drive the optimisation of the supply chain by being a reliable procurement, modern manufacturing operations and logistics coordinator, ensuring resilient, simplified, fast, cost-saving and quality-driven process flows
- Promote sustainability by adhering to a transformative digital business environment, maintaining maximal efficiency and moving ever closer to the customer base

Vision

- We envision an efficiently integrated system of advanced in-house production capabilities and preferred sub-supplier network, jointly driving innovation and satisfying customer demand within the shortest timeframes and at flexible pricing modes
- To build a sustainable cluster of highly competitive manufacturing entities in the Baltic States for connecting the global metal industry markets on a local basis
 - Shaping Supply Chain Connections
 - Ensuring Industry 4.0 Productivity
 - Increasing profitability with Tailor-Made and Knowledge-Based Solutions



Our Core Competencies

01

CNC Machining

- CNC Turning
- CNC Milling
- Precision Machining

02

Welding

- MIG/MAG/TIG Welding
- Assembly Services

03

Bending

- Pipe/Tube Bending
- Round Bar Bending

04

Surface Finishing

- Mechanical Finishing
- Polishing & Grinding
- CNC Engraving
- Deburring
- Edge Smoothing

05

Metal Partners

- Sheet Metal & Tube Processing
- Thermochemical
- Electrochemical
- Surface Coating

- Through our **Baltic States Metal Partner Network** we also offer secondary services such as larger engineering projects and even 3D printing capabilities

Metal Centre in Ventspils



CNC Machining Expertise

- 3- to 5- axis CNC milling machines; max: 1200x600x600mm
 - Haas UMC-750, 5-axis simultaneous machining for complex geometries
- Universal CNC lathes; max: ø600mm, L=1100mm
 - Haas ST-40, large-frame turning, the only machine in the Baltic States
- 14x Haas CNC and manual machinery fleet in our Metal Centre in **Latvia**
- Batch size (≥ 1 MOQ):
 - Prototyping
 - Series production, 10.000+ parts
 - Long-term, large-scale projects - stocking inventory management and forecast agreements
- Materials:
 - Black steel & stainless steel (S275, S355, C45, AISI 304, AISI 316)
 - Aluminium (5-6-7 alloys + other alloy series)
 - Colour metals (brass, bronze & copper)
 - Polymers (PA6.6, POM, PEEK)
 - Special metals (Hardox, Strenx, Cromax)



From custom bending equipment makers to one of the leading CNC machine parts providers in the Baltic States

Continuously growing into a full value chain supplier and only contact point for the customer



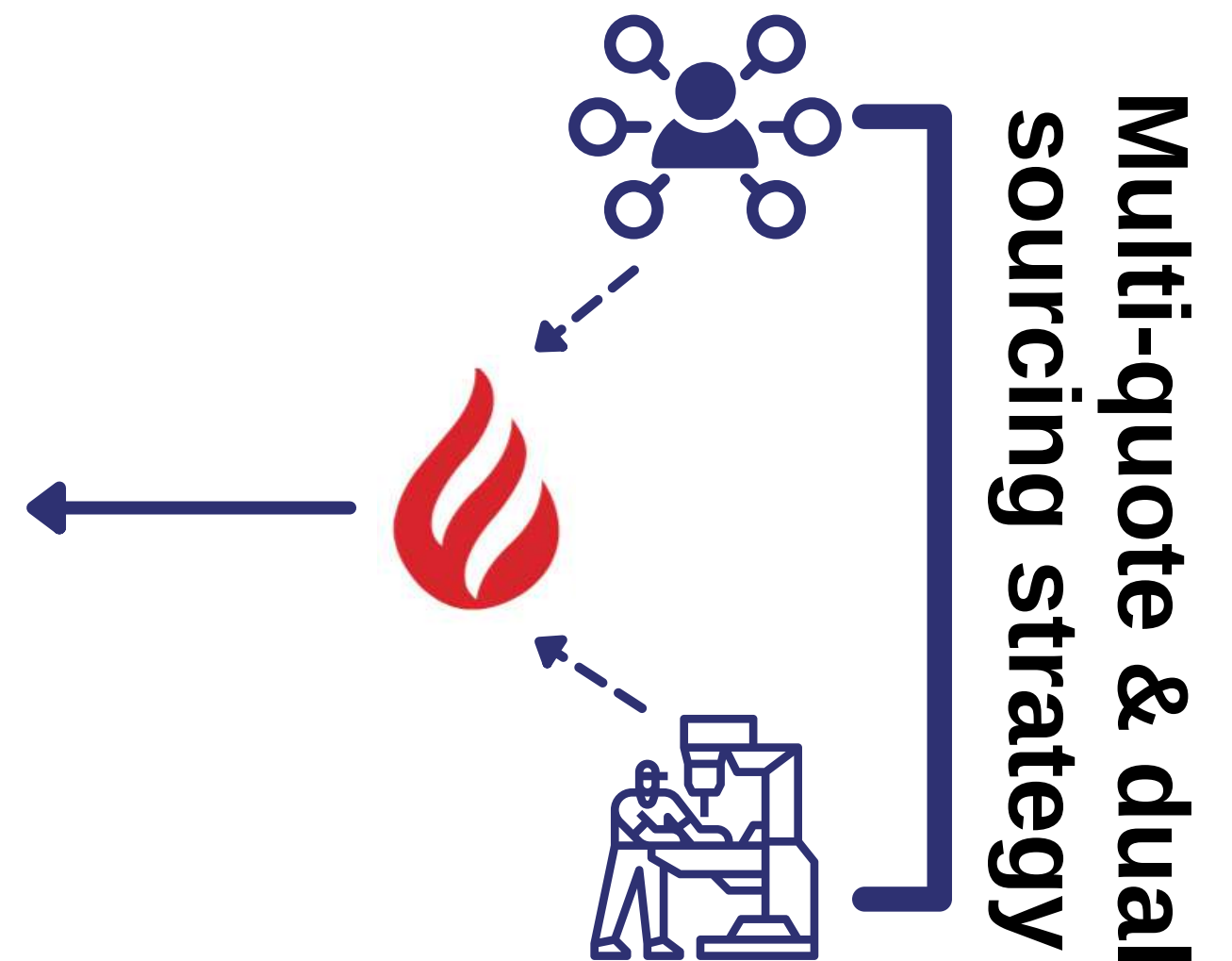
Our Quality

- We do our best to leverage latest technologies and implement **LEAN** methodologies into our daily work processes and systems
- We employ the **Kanban system** or **JIT manufacturing** for our vehicle-engineering customers
- We conform to **PPAP** obligations that are required for new article introductions
- We continually improve **internal quality processes**, provide value-added activities and maintain efficient managed inventory services at all times
- We keep an **action log** and track **KPIs** to ensure our steps align with our strategic goals: **DIF, DOQ** and **DOT metrics**



Our Metal Partners

- **Collaborative** supply chain approach
- Treating **suppliers as teammates**
- Optimisation via **supplier availability & suitability**
- Efficient supplier management
 - On-boarding & selection
 - Integration
 - Performance monitoring
 - Development & continuous improvement
- Qualified suppliers become **Metal Partners**
- **Connect metal both locally and globally** through long-term & sustainable partnerships



EnergoProcess

How We Metalwork



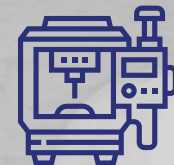
Our Value Proposition

- We are pushing an evolving concept of "**Competing on Supply Chain**", rather than on price



Quality Assurance

ISO 9001:2015 certified Metal Partners ensure your products are delivered error-free and our in-house quality team double-checks QA performance before dispatch approval



Advanced SCM

Constantly free capacities from increased supply chain flexibility and agile sourcing tactics that lead to risk reduction



Personalised Communication

We save time for our partners and customer satisfaction is the result of dedicated responsiveness and diligent order fulfilment



TCO Reduction

Competitive prices and favourable geographies via the integration of internal capabilities and intelligent supplier selection



Major Export Markets

- Sweden
- Finland
- Germany
- France
- United Kingdom
- Czech Republic
- Poland
- Lithuania
- Estonia



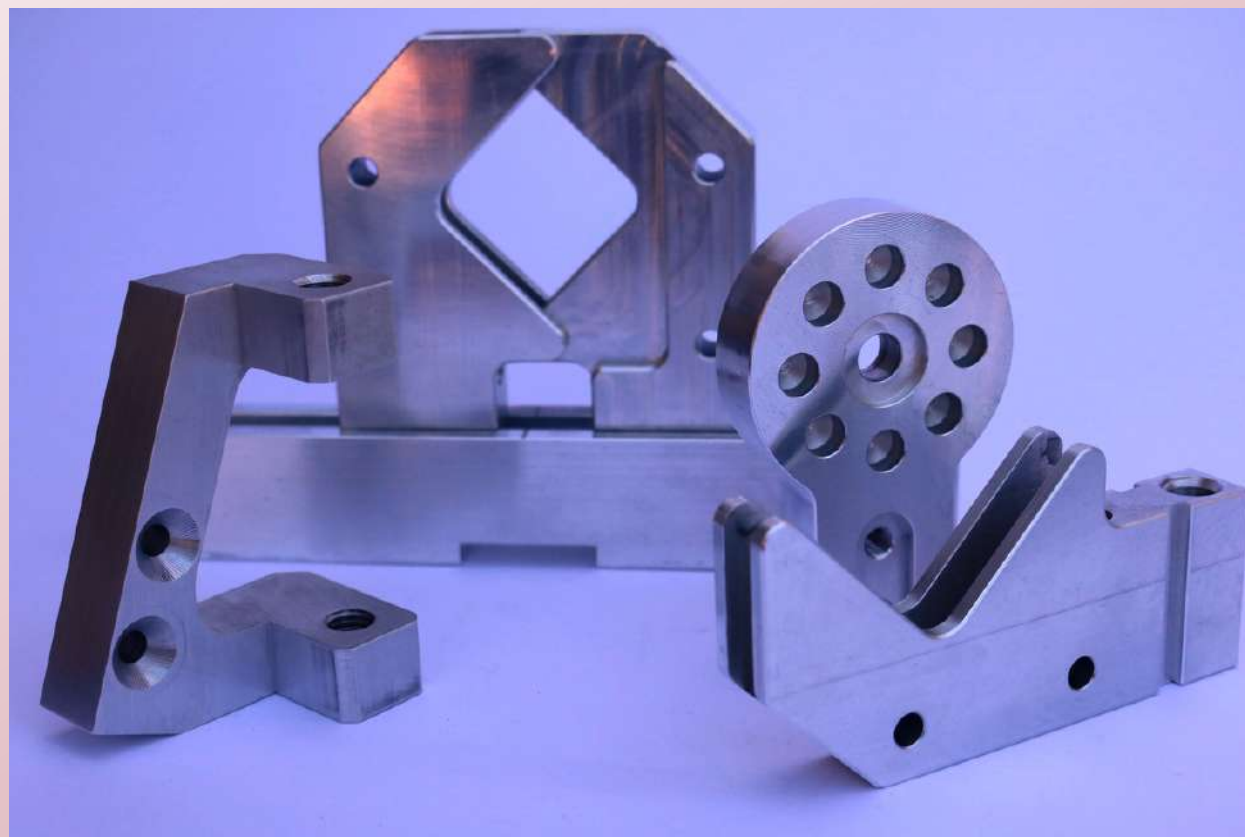
Our Long-Term Customers

BUCHER
municipal

M MALMAR
STRONG PARTS FOR YOUR PRODUCT



Examples of Our Work (1)



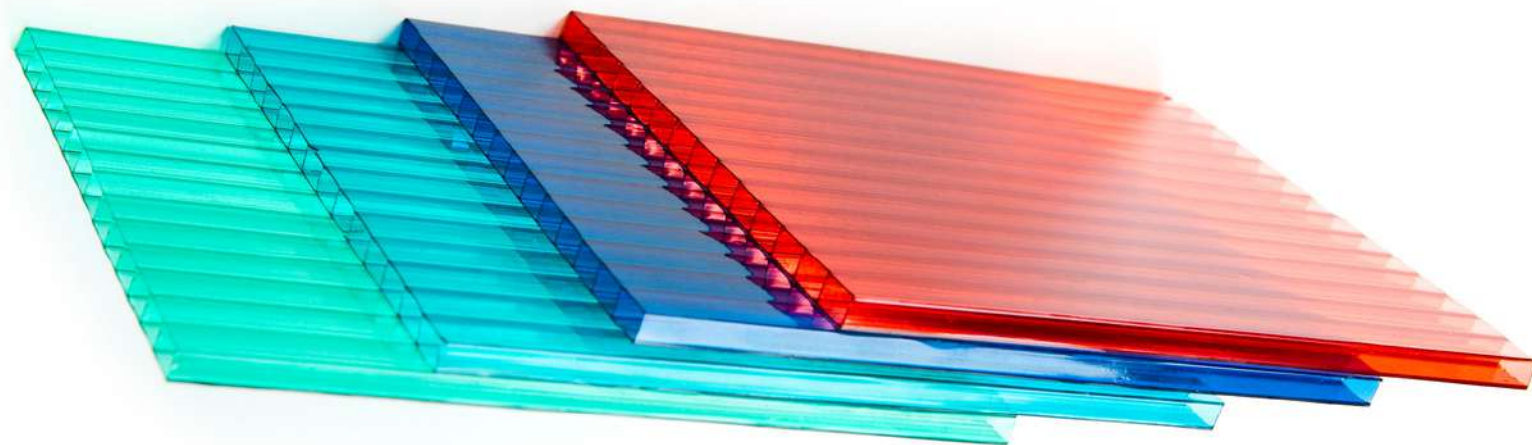
Examples of Our Work (2)



Examples of Our Work (3)



Our Projects in Progress



I. Extruded thermoplastic sheet production:

- Financing **modern extrusion lines** in Latvia
- Products made -
 - Solid/multiwall polycarbonate
 - Acrylic (PMMA)
 - PETG
 - Modular systems & versatile profiles
- Diverse fields served -
 - Construction material & protective applications
 - Electronics & consumer uses
 - Automotive
 - Medical

II. Growth of processing capacity:

- Purchase of a high-performance **Haas ST Series** turning centre and a new **CNC tube laser cutter** to meet increasing customer demand
- On-going CapEx decision-making and technological investments to expand production competencies and improve productivity

Let's Connect!

Energoinpex SA Corporate Address

Rue du Purgatoire 3, 1204 Genève, Switzerland

UID No.: CHE-115.657.669

Energoinpex SIA Metal Centre Address

Fabrikas iela 3B, LV-3601, Ventspils, Latvia

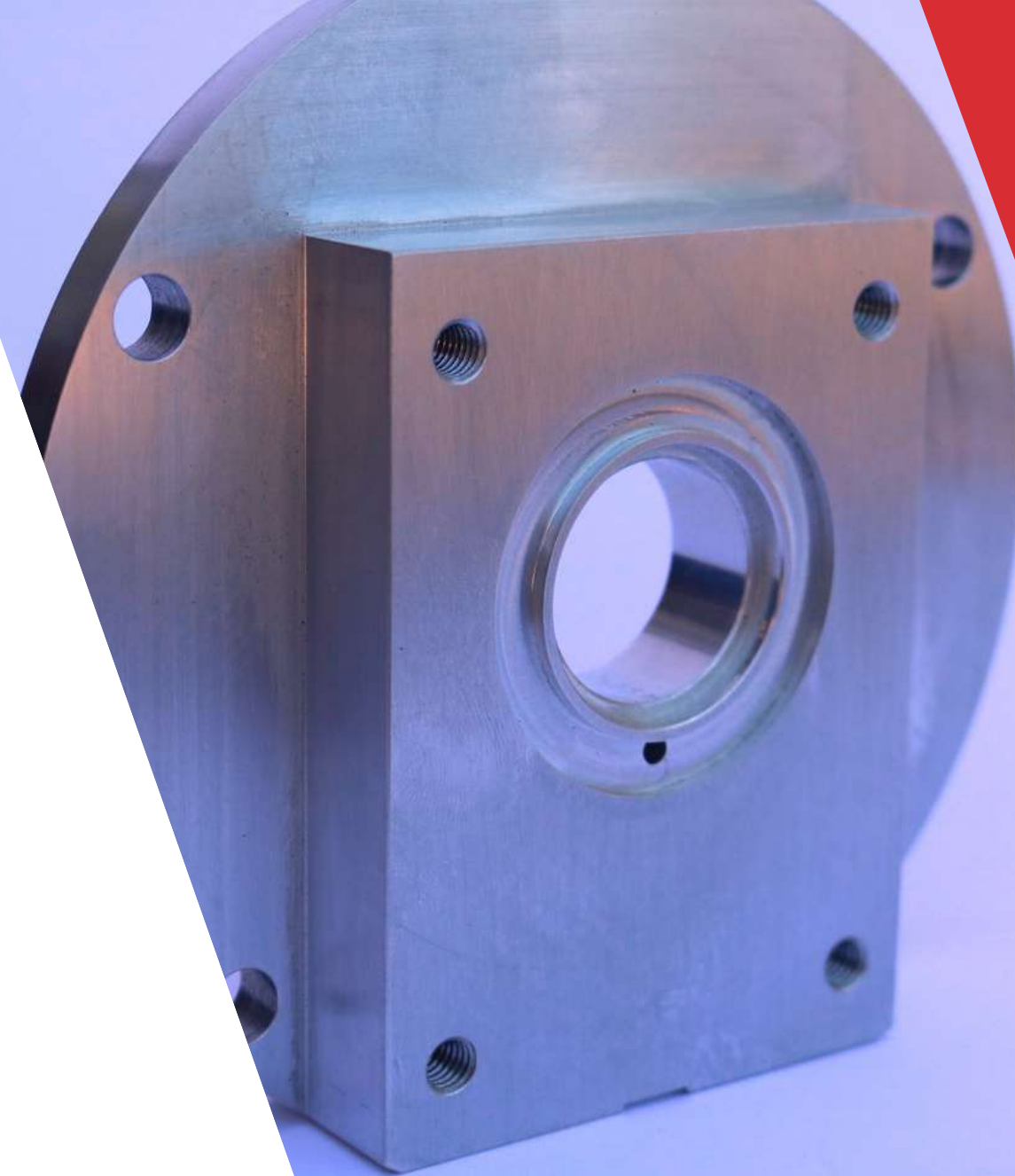
Reg. No.: 41203051759

VAT No.: LV41203051759

Tel.: +37126448845

Email: metal@energoinpex.eu

Website: <https://metal.energoinpex.eu/>



[Quote now](#)