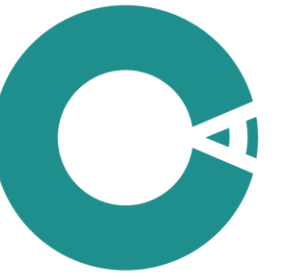


W I S E A N G L E

**Advancing Science,
Boosting Innovation,
Empowering Society**



WISE ANGLE

Our mission

We spark transformative research and innovation to create inclusive, sustainable solutions for societal challenges, bridging the gap between science and implementation

We craft multidisciplinary, impact-driven projects.

We facilitate the co-creation and scaling of user-centered tools and services.

We generate robust evidence to inform policy and service design.

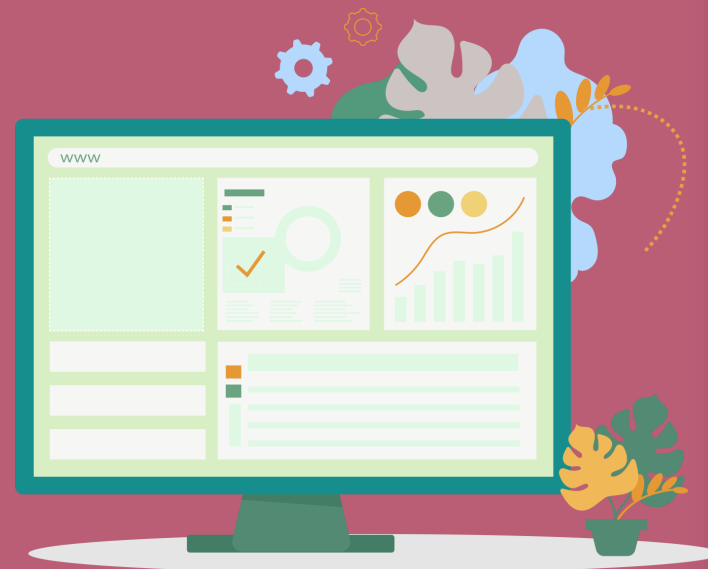
We design science communication, innovation and valorisation strategies.

Services

We drive collaborative research and innovation through strategic services, from grant writing to policy impact, driving meaningful change and engagement across sectors.



Grant Writing



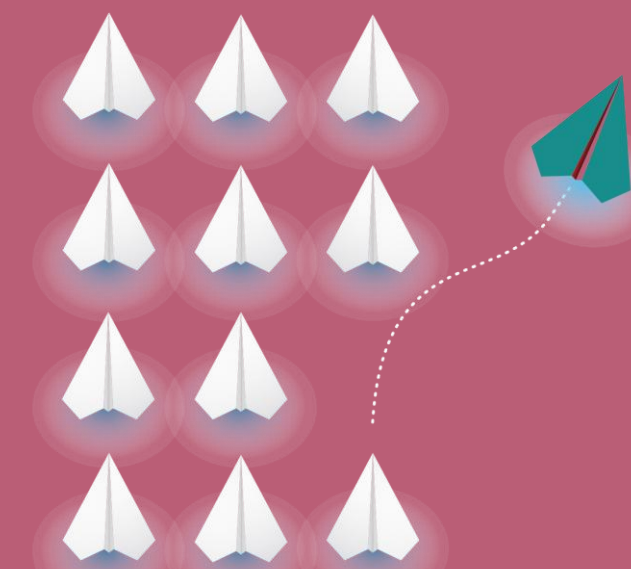
Project Management



Social Research



Science to Policy



Innovation & valorisation



Communication & Engagement



Services

Grant Writing

Securing funding is **crucial** for the success of any research or policy project.

Our grant **writing service** is designed to help you craft compelling proposals that stand out to funding bodies. We leverage our deep understanding of European funding mechanisms to help you navigate their intricacies and **increase your chances of success**.

From initial concept development to final submission, we provide end-to-end support to ensure your proposals are persuasive and aligned with funders' priorities.

We partner with the best researchers and innovators across Europe to apply for **EU funding calls**, such as those under the **Horizon Europe programme**, and develop competitive and impactful proposals.



Services

Project Management

Our team excels in comprehensive **project management**, ensuring that every phase of your research and policy initiatives is meticulously planned, executed, and monitored. We employ industry-leading methodologies to manage **timelines, budgets, and resources, guaranteeing the successful delivery of your projects.**

Our team is adept at navigating the complexities of **European funding programmes, such as Horizon Europe, Erasmus Plus, Interreg**, etc., ensuring compliance and maximizing impact.

We align with the **European Commission PM2 Methodology**.

We stay updated with the latest trends and best practices in project management, ensuring that our approach remains cutting-edge and effective.



Services

Social Research

Understanding **societal trends and impacts** is at the heart of effective policy-making.

Our social research services offer in-depth analysis and insights into social attitudes, behaviors, and needs. **We employ a range of qualitative and quantitative methods** to gather and interpret data, providing you with evidence-based recommendations that inform policy decisions and **drive social change**.

Our research aligns with key **EU social policies**, such as the European Pillar of Social Rights and the EU's Gender Equality Strategy, ensuring that our findings contribute to the advancement of inclusive and equitable societies.



Services

Science to Policy

Bridging the gap between scientific research and policy implementation is one of our core strengths. Our science to policy service translates complex scientific findings into actionable policy recommendations.

We work closely with researchers and policymakers to ensure that scientific evidence is effectively communicated and integrated into policy frameworks, fostering informed decision-making and sustainable development. Our efforts are in line with the guidance provided by the **European Commission's Joint Research Centre**, which aims to enhance the impact of knowledge and evidence on policy-making.

We closely follow **regulatory and legislative developments** ensuring that your projects contribute to the broader goals of sustainability, such as those marked by the **European Green Deal**, and digital transformation.



Services

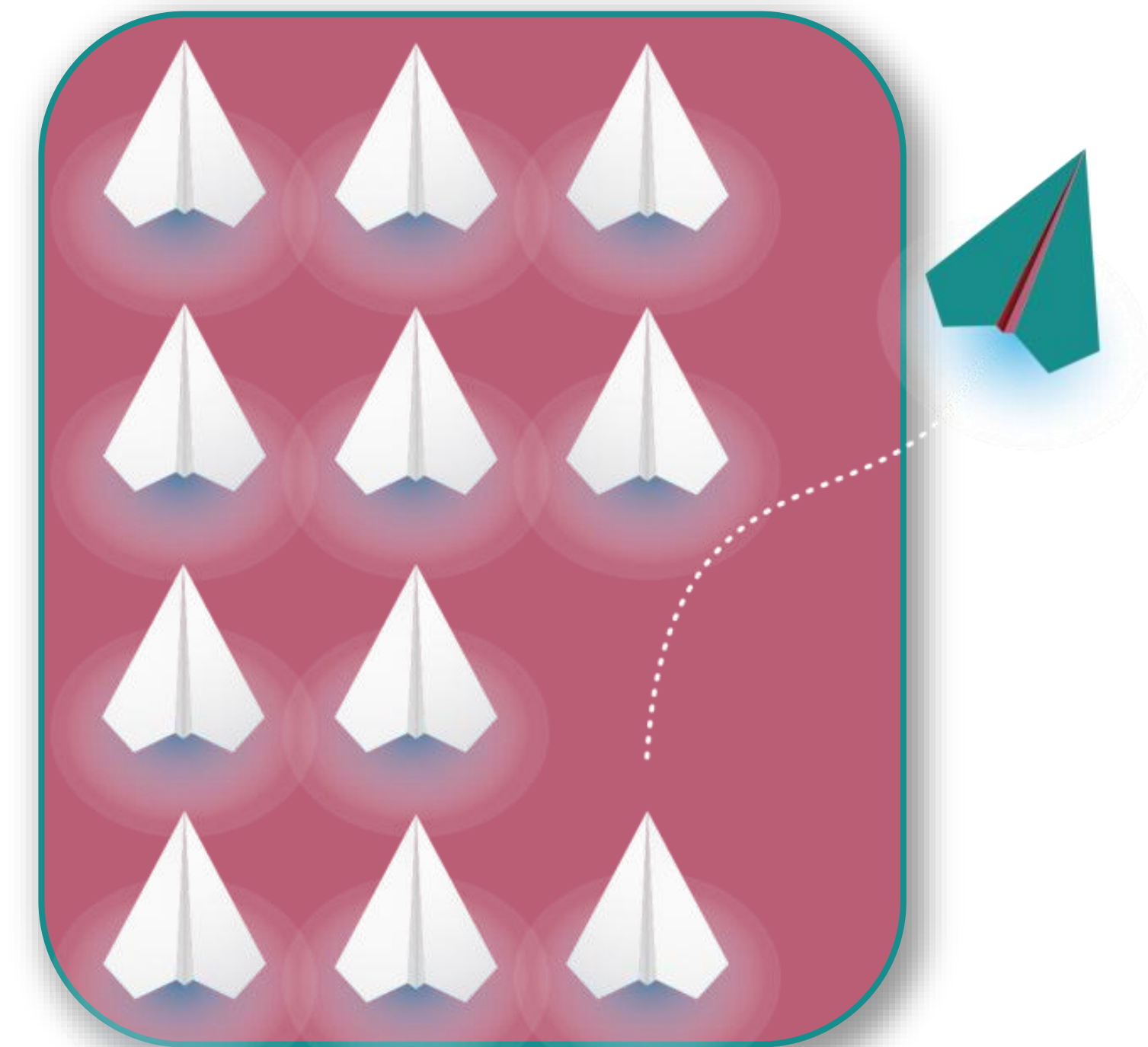
Innovation & valorisation

Innovation is key to addressing contemporary challenges and driving progress. Our consultancy supports **research valorisation*** by identifying and nurturing **innovative ideas**, transforming them into viable solutions.

We assist in the **development of strategies** for technology transfer, business modelling and **intellectual property management** and, ensuring that your innovations achieve market readiness and generate tangible benefits.

Our services are aligned with the **EU's Innovation Union initiative** and the EU knowledge valorisation principles, which aim to foster a culture of innovation and entrepreneurship across Europe.

*EU valorisation policy - European Commission



WISE ANGLE

Services

Communication & engagement

Effective communication is **essential for the success of any project**. Our communication and dissemination services are designed to ensure that your research findings and policy recommendations reach the right audiences.

We conduct market research and develop **tailored communication strategies**, create **engaging content**, and utilize various channels to disseminate information widely.

Our goal is to **enhance visibility, foster public engagement, and drive impact**. We align our communication efforts with the most relevant European campaigns and international initiatives, ensuring that your messages resonate with the targeted stakeholders and the public.



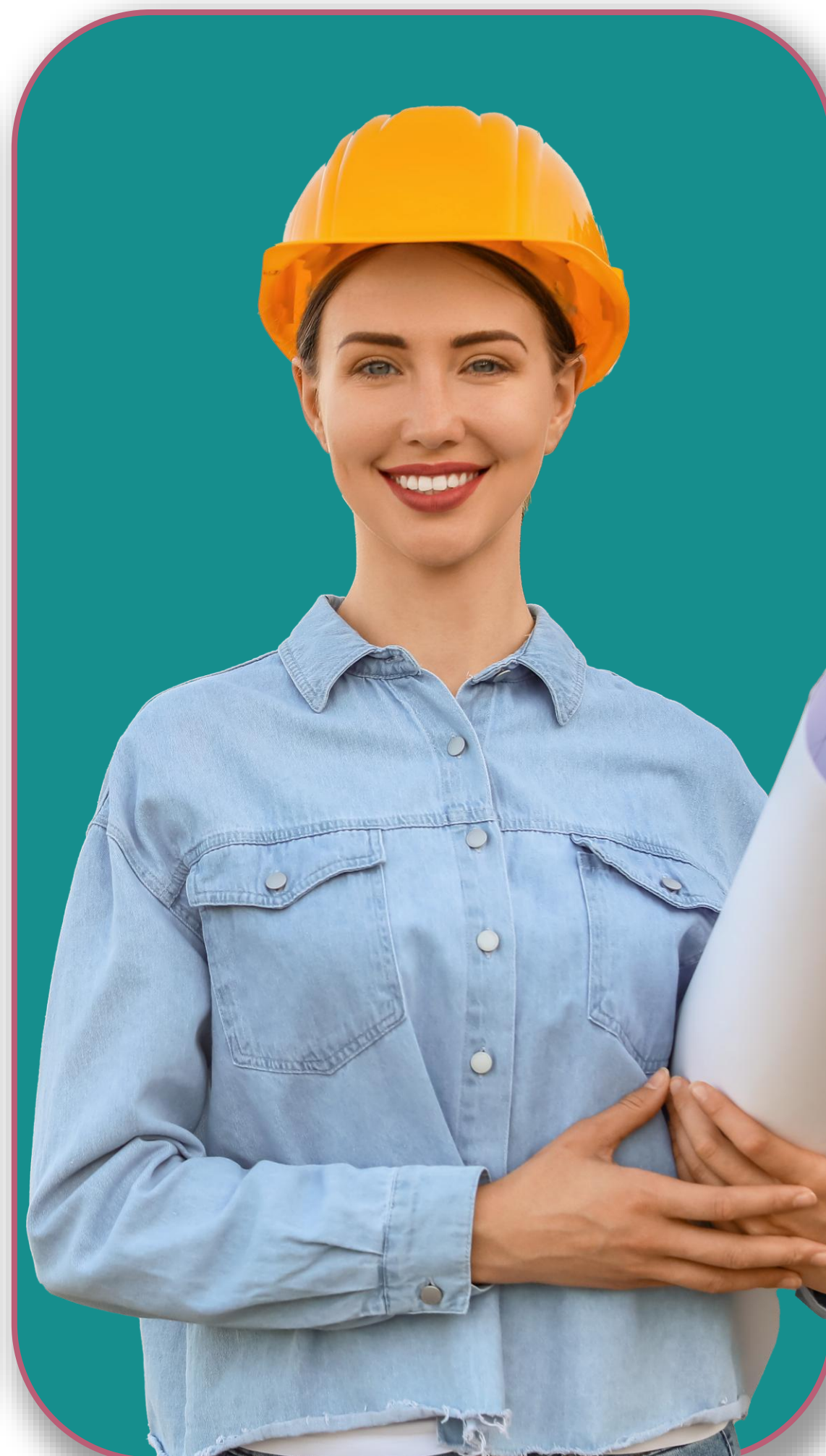
Focus areas



Health



Education

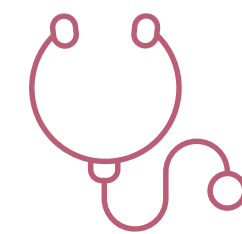


**Green and Digital
Transition**



**Rights and
Values**

Health



At Wise Angle we recognise that health is holistic. **Our work is dedicated to enhancing health and wellbeing through a multifaceted approach.** Our projects embrace multi-stakeholder and cross-disciplinary methods to achieve our vision of creating healthier living environments and communities.



We accompany the design and implementation of **public health strategies, policies and interventions addressing pressing unmet needs.** We have extensive experience in **healthcare digital transformation projects** with the dual goal of improving health systems' efficiency and contributing to the **reduction of health inequalities.**



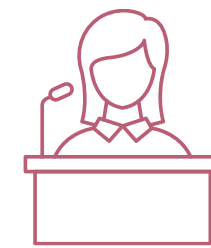
A core focus of our work involves **mental health.** Europe is witnessing an unprecedented surge of mental health problems triggered by complex and interrelated risk factors and amplified by the additional pressures placed by the pandemic. Our projects and studies delve into the understanding of the causes, the design of prevention strategies, policies and interventions in the living and working spaces, and the research on innovative therapeutic and support approaches.



Education



Education is a cornerstone of our work. We are committed to developing **innovative educational programs** and tools addressing **emerging skill needs**. Our projects aim to make education more engaging, effective, and accessible to all, fostering a **culture of lifelong learning and employment**. We encourage continuous education and skill development throughout an individual's life, ensuring that people are prepared for **future challenges**.



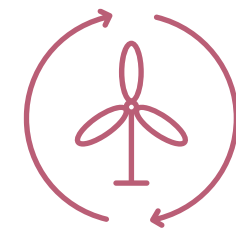
Our projects and initiatives promote **equality and inclusion in education**, eliminating barriers and creating opportunities for all individuals, regardless of their background or circumstances. By focusing on innovative education methods and tools, we strive to enhance learning experiences and **ensure that everyone has the opportunity to reach their full potential**. By developing innovative, strategic, educational and training projects, **we contribute to addressing the most pressing skill gaps and drivers of workforce shrinking across European industries and economies**.



Green and Digital Transition



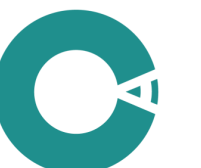
We are at the forefront of supporting the shift towards a sustainable **green and digital future**. Our commitment to a just transition brings social desirability and acceptability to the core of each project and ensures social justice as we transition towards, green, **eco-friendly practices**, which prioritise social equity and **inclusion for all**.



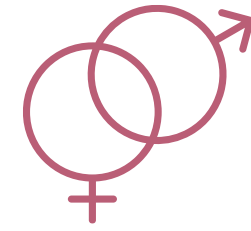
We assist public bodies, industries, research organisations and civil society in projects promoting the adoption of **renewable energy** sources, **nature-based solutions**, **green mobility**, **sustainable land use** and **circular economy principles**. Collectively, these projects aim to improve waste management, measure and reduce pollution, and mitigate the effects of climate change. Our projects include **smart city initiatives** that create future-proof urban environments which are more efficient, greener, liveable and healthier.



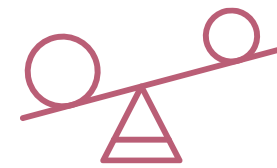
Artificial Intelligence (AI) is a **key cross-cutting area** of our expertise; our projects develop and implement AI-driven solutions to address a range of societal challenges, while ensuring that we use **the newest guidance and recommendations on AI technologies for their ethical and effective use**.



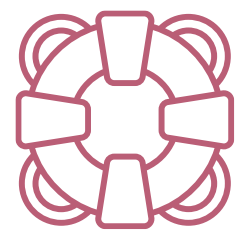
Rights and Values



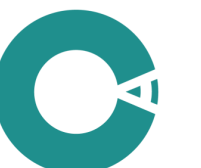
Our consultancy upholds **fundamental rights and values**, with a strong focus on promoting **gender equality, disability inclusion, and combating misinformation and discrimination**. We develop and implement methods and tools that address gender disparities, ensuring that all individuals have equal opportunities and rights, with a specific focus **on reducing biases in research, innovation and policy design**.



Our projects aim to improve the lives of individuals with disabilities by enhancing accessibility, providing support services, and **promoting their inclusion in all aspects of society**.



We also address the challenges and opportunities associated with **migration**, focusing on integration, support services, and policies that benefit both **migrants and host communities**. Combating misinformation and discrimination is crucial for a fair society, and our initiatives aim to raise awareness, promote accurate information, and dismantle prejudice. Through these efforts, we work towards building a more just and **inclusive society where everyone is valued and respected**.



Our strenghts

+15

years of
experience

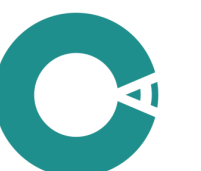
A pan-European network of
Research, Government, Industry and
Civil Society clients and partners

Qualified staff and continuous learning

Recognized experts and proposal evaluators

Member

of the WHO
Strategic Partner
Initiative for Data
and Digital Health



WISE ANGLE

Recent Projects



Boosting resilience, innovation and growth in the health industry through skills development

[2025-2028] **Full beneficiary.** Funding programme: Erasmus Plus | +5 million Euro

Website under construction <https://www.bright-skills.eu/>



Protecting urban aquatic ecosystems to promote One Health

[2023-2026] **Full beneficiary.** Funding programme: Horizon Europe | +5 million Euro

Website: <https://www.oneaquahealth.eu>



Coordinating Research and Evidence for Medical Devices

[2021-2024] Funding programme: Horizon 2020 | +2 million Euro

Website: <https://www.core-md.eu/>



Bridging the Early Diagnosis and Treatment Gap of Brain Diseases

[2021-2023] **Full beneficiary.** Funding programme: Horizon 2020 | +6 million Euro

Website: <https://alamedaproject.eu/>

Recent Studies



Mental health in the construction sector: preventing and managing psychosocial risks in the workplace, <https://data.europa.eu/doi/10.2802/7183661>

[2023-2024] European Agency for Safety and Health at Work



Mental health in the agriculture sector: preventing and managing psychosocial risks in the workplace, <https://data.europa.eu/doi/10.2802/3310639>

[2023-2024] European Agency for Safety and Health at Work



Psychosocial risk exposure and mental health outcomes of European workers with low socioeconomic status: literature review, <https://data.europa.eu/doi/10.2802/00677>

[2022-2023] European Agency for Safety and Health at Work



The response of civil society organisations to face the COVID-19 pandemic and the consequent restrictive measures adopted in Europe, <https://data.europa.eu/doi/10.2864/05644>

[2020-2021] European Economic and Social Committee



How the Digital Transformation can put humans at the centre of robotics and automation – collaboration between humans and machines for better quality products and services, <https://data.europa.eu/doi/10.2864/733324>

[2020-2021] European Economic and Social Committee

Main contractors



Networks & NGOs



Meet the Team

Project Manager
from Greece

Graphic designer
from Italy

Founder & Partner
from Italy

Senior Project Manager
from Ireland

CEO & Partner
from Italy



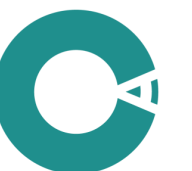
Georgia Karyami

Davide Tenconi

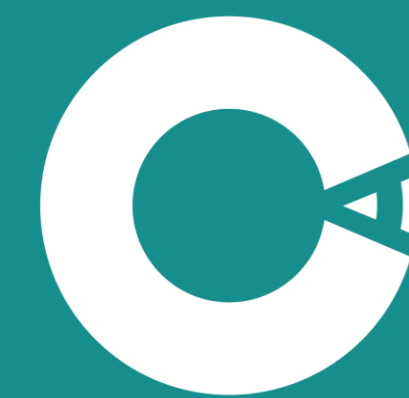
Valentina Tageo

Evelyn Donohoe

Alessandro Corsello



WISE ANGLE



W I S E A N G L E

wiseangle.es

A wise approach to social innovation

Barcelona Health Hub

Recinto Modernista de Sant Pau

Carrer de Sant Antoni Maria Claret 167
08025 - Barcelona (Spain)

admin@wiseangle.es