



GEM

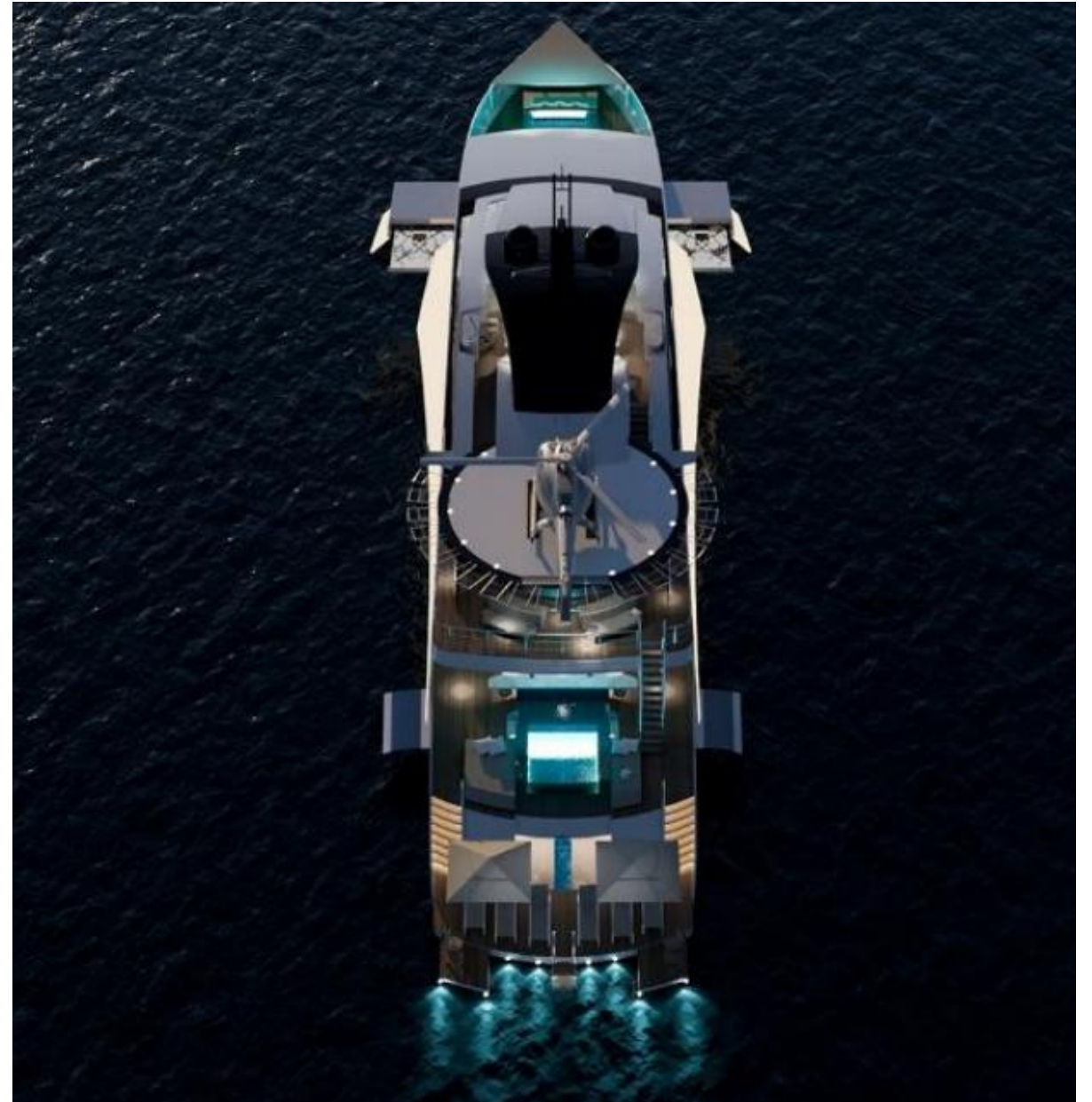
Services & Yachting

Philosophy of the Sea

The Future of Sustainable Superyacht Excellence

Italian craftsmanship meets Greek engineering expertise to shape the future of high-value yachting.

This project represents an **exceptional opportunity to acquire a high-value, technologically advanced and sustainable superyacht**, combining timeless Italian shipbuilding craftsmanship with advanced Greek mechanical and technical engineering expertise. It is a new-generation vessel, conceived from the outset to meet contemporary demands for luxury, stability, energy efficiency, and long-term value.



The yacht is currently under construction and is offered at a pivotal stage, allowing **full customization according to the buyer's exact requirements**, while relying on a **certified and structurally completed platform** that ensures safety, technical maturity, and significantly reduced execution risk.

Originally built at a renowned Italian shipyard, the vessel can be completed in Greece, where the final construction, engineering, and design plans have been fully developed by our team. Both the initial construction phase in Italy and the completion phase in Greece are carried out under the supervision of **Lloyd's Register**, ensuring compliance with the highest international standards of safety, quality, and engineering integrity.

Dimensions, Structure & Long-Term Design

With a current length of **44 meters** and an impressive **9-meter beam**, the superyacht has been structurally engineered to allow **seamless extension up to 60 meters**, without any compromise in stability or performance. This flexibility enables the buyer to define the final length, design, and onboard layout with complete freedom.

For its size, the yacht stands out due to its exceptional beam, which ensures **generous interior volumes and an enhanced level of comfort**. Construction features a **double-bottom steel hull** combined with an **aluminum superstructure**, offering strength, safety, and reduced weight.



Interior Layout, Cabins & Privacy

The interior, designed by a world-renowned designer, combines refined aesthetics with functionality and privacy.

A defining feature is the **forward owner's master suite**, occupying the entire bow area and extending over approximately **100 sqm**. The suite offers:

complete privacy

a private terrace

a **submersible swimming pool**, concealed beneath teak decking when not in use

Accommodation has been designed for **up to 16 guests** in high-specification cabins, along with comfortable quarters for **12 crew members**, ensuring a high standard of service and efficient onboard operation.





Exterior Spaces, Beach Club & Lifestyle

At the stern, **hydraulic platforms** create an impressive **beach club**, providing direct access to the sea. An innovative **water curtain system** welcomes guests with a cascading water feature, while a luxurious **waterfall-style outdoor shower** and a **large integrated aquarium** enhance the overall sense of comfort, innovation, and luxury.

Hydraulically extending balconies allow direct contact with the sea, reinforcing the open-space lifestyle of a modern superyacht.

Garage, Tenders & Water Toys

The spacious **garage** has been carefully designed to accommodate a complete range of tenders and water toys, ensuring seamless operation and maximum flexibility. It provides dedicated storage for:

2 jet skis

1 small tender

1 large tender

a full selection of water toys

Hydraulic doors on both sides enable smooth and safe launching and recovery, enhancing operational efficiency in all conditions.

In addition, the **aft-facing wall of the garage, adjacent to the beach club area, is designed to be clad with a large integrated aquarium**, creating a striking visual connection between the technical space and the leisure area. This feature elevates the beach club experience, blending innovation, lifestyle, and refined luxury, and reinforcing the yacht's distinctive superyacht character.

Eco-Friendly Propulsion & Advanced Stability

Propulsion will be provided by **eco-friendly dual-fuel engines**, capable of operating on diesel and biofuels, while the yacht is **methanol-ready**, fully aligned with the future of sustainable yachting. The engineering design allows for the installation of **next-generation active and passive stability systems**, which:

- significantly reduce roll and pitch
- enhance comfort both underway and at anchor
- reduce structural loads
- improve overall energy efficiency

The yacht is expected to reach a **maximum speed of 24 knots**, combining performance with environmental responsibility.

Technology, Protection & Onboard Innovation

Advanced air and water treatment systems ensure exceptional onboard hygiene and comfort. **Plasma-based air purification technology** disinfects and deodorizes the ventilation network, while an **ozone generator** treats potable water and neutralizes odors in grey and black water tanks.

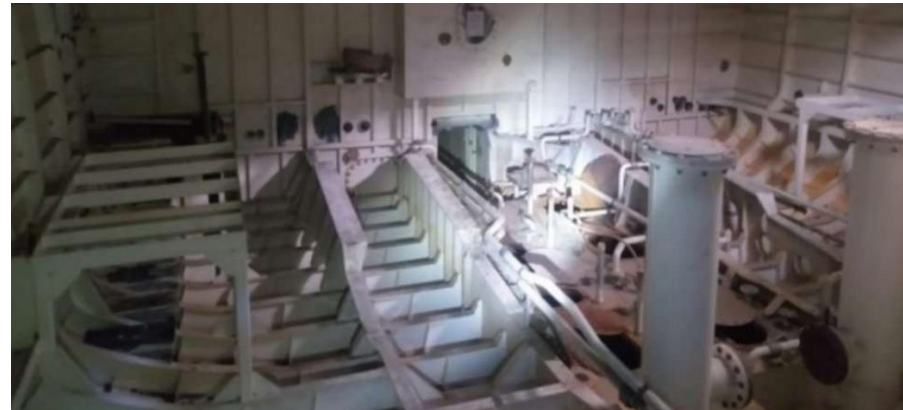
In addition, the yacht incorporates:

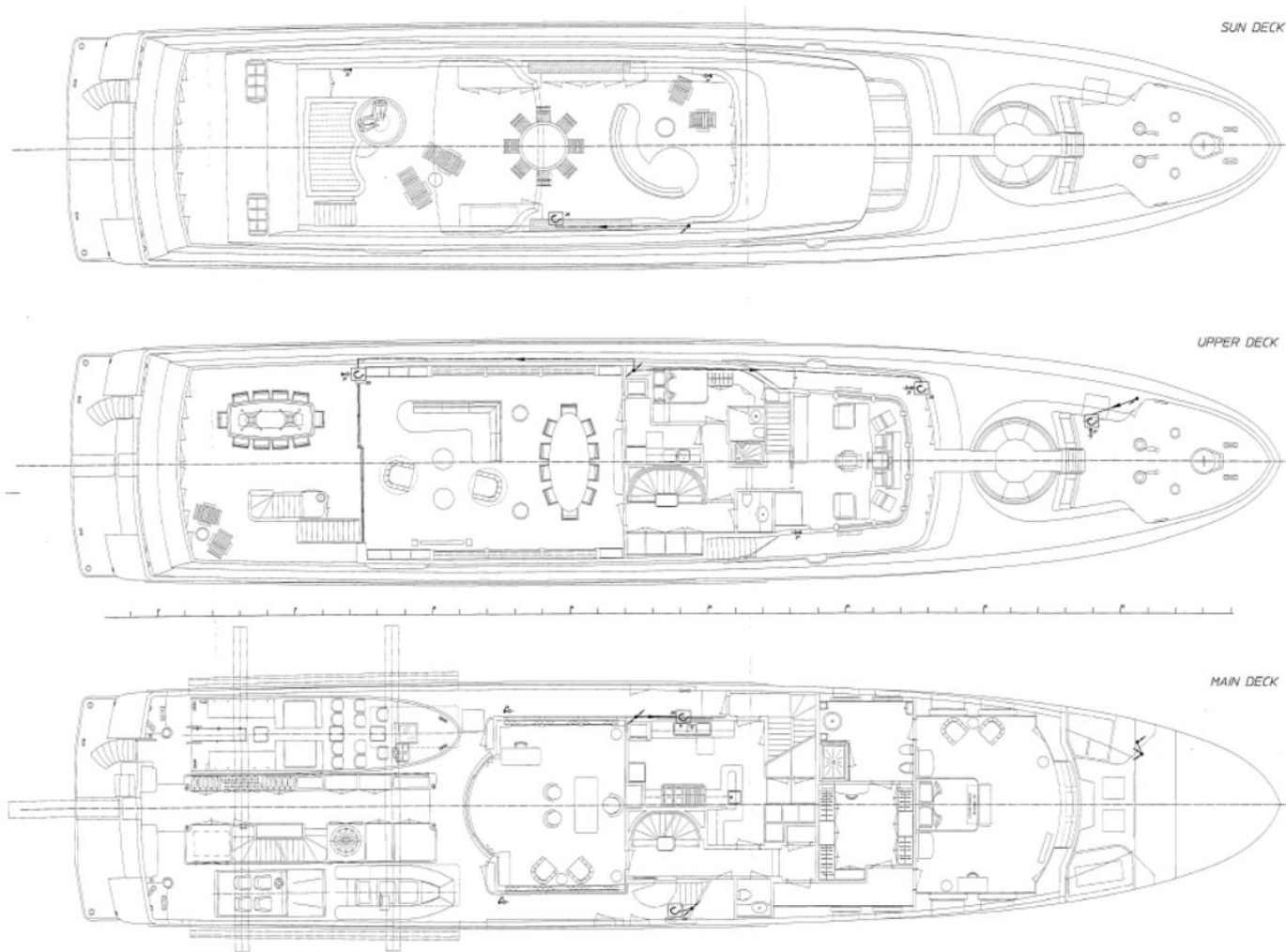
- a **UV shading and protection system** around the owner's suite

- an **air curtain system** for controlled airflow

- a **pressurized air barrier**, designed to prevent seawater ingress onto deck in adverse weather conditions

On the upper deck, the yacht features a **hydraulically liftable helipad**, which converts into a striking **rooftop open-air cinema**, offering private screenings under the stars.





Project Completion & Hull Availability

The yacht's **hull is already located in Greece**, and the project can be completed entirely here under the **technical coordination and supervision of GEM Services & Yachting**.

The future owner has full flexibility to implement **any desired modifications or customizations** to the design, layout, and equipment.

The **current asking price for the hull and the complete set of approved technical documentation is €2,100,000**, while the final completion cost is adjusted according to the selected length, equipment, and interior and exterior design specifications.

Philosophy of the Sea