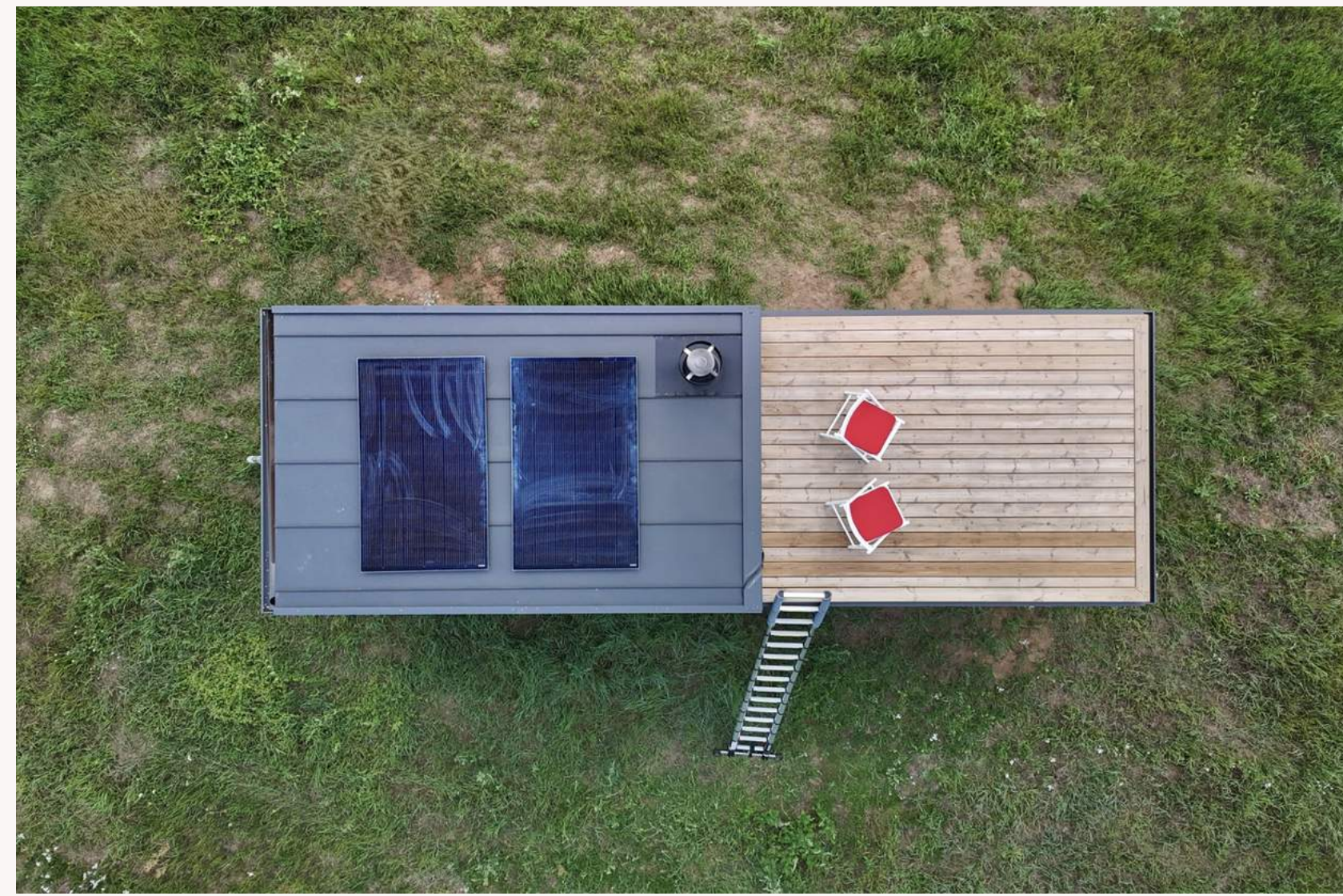




BALTIC TINY HOUSE



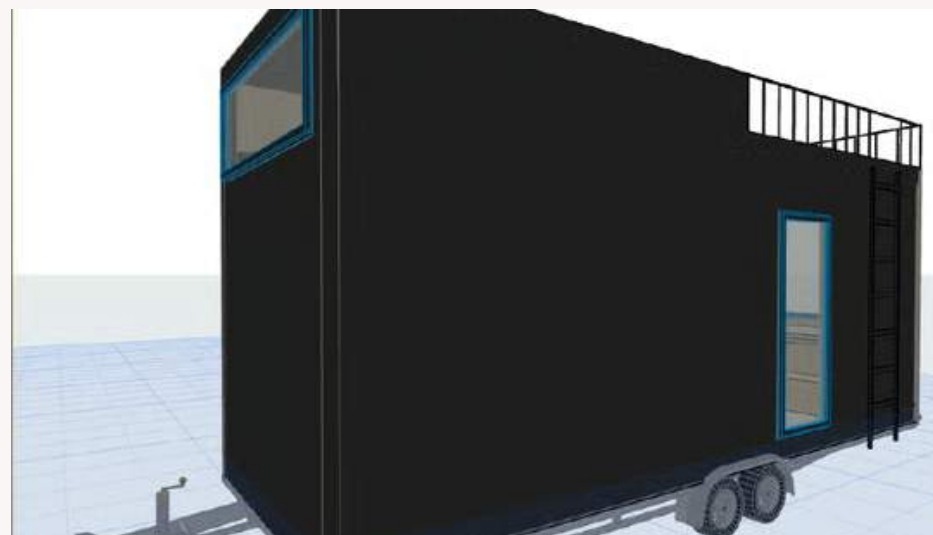
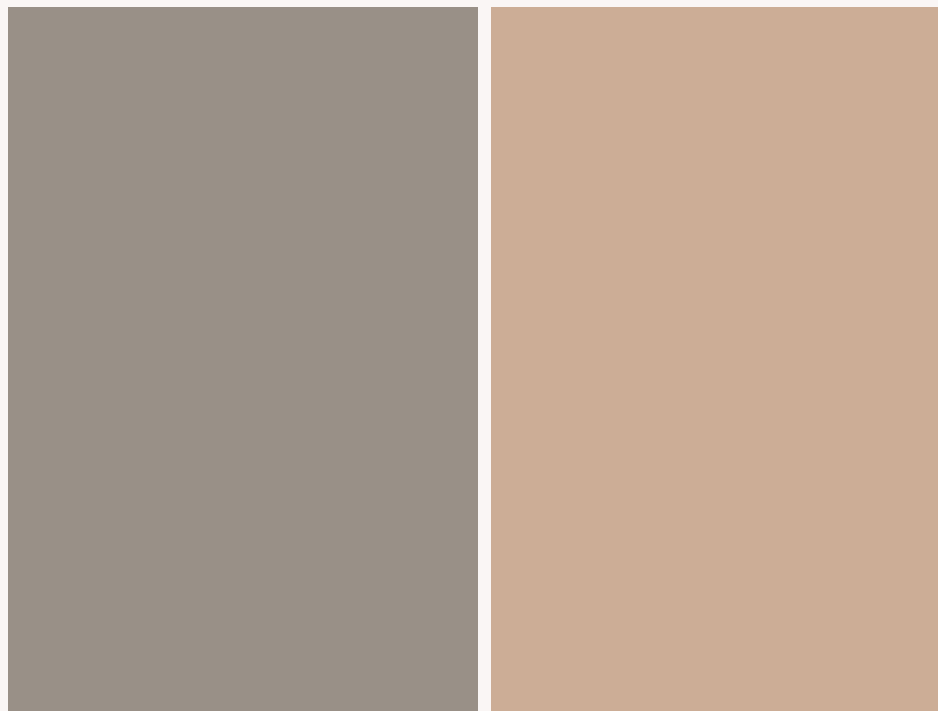
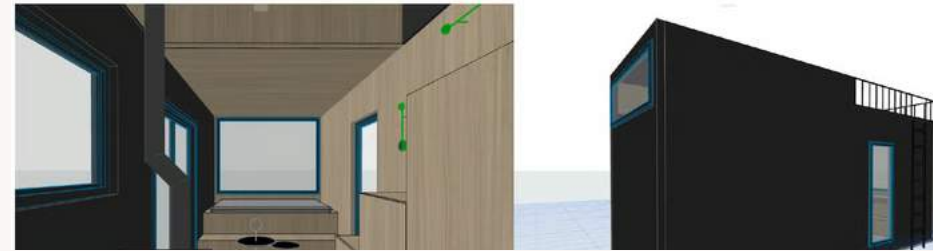
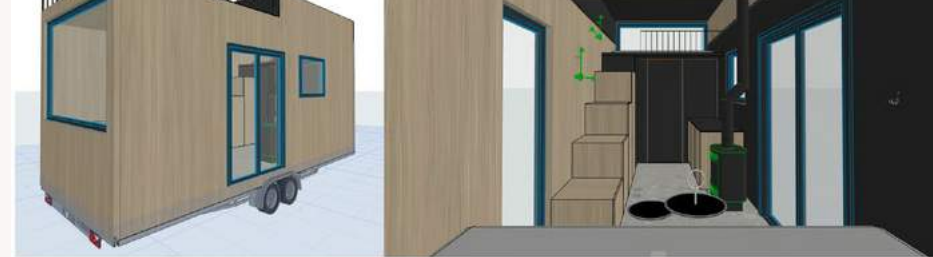


WELCOME TO OUR COMPANY

Baltic Tiny House was founded by two entrepreneurs. Radvile is a head of design and created this unique tiny house on wheels. Aurimas previously had run design house Kirigami and launched Baltic Tiny House to create a comfortable modular house for his family to spend more time in nature, especially in the areas where foundations for bigger houses are not allowed. Modular house on wheels helps to solve this issue with an easy-access to transport the house anywhere you want.

enjoy

DESIGN



Our in-house designers have created a unique Tiny House with Mezzanine. In total 4 people can sleep in a tiny house.

Option without Mezzanine allows 2 people to sleep in a tiny house.

We have registered this design and started a standardized production in 2024.



HOW IS IT MADE?

We are distributors of Vlemmix trailers which is a perfect fit to build Tiny houses for their durability and dimensions.

Construction is made of light gauge steel.

PIR and mineral wool is used for insulation, water and pressure resistance.

Vapour insulation film is used for energy savings, a better indoor microclimate, effective protection against vapour and moisture.

Exterior: steel sheets and/or thermowood, performs remarkably well even in the extreme and harsh climatic condition.

Interior paneling: wood paneling, plywood

Electric wiring and plumbing

Total weight: 3500 kg

1

BASIC

1

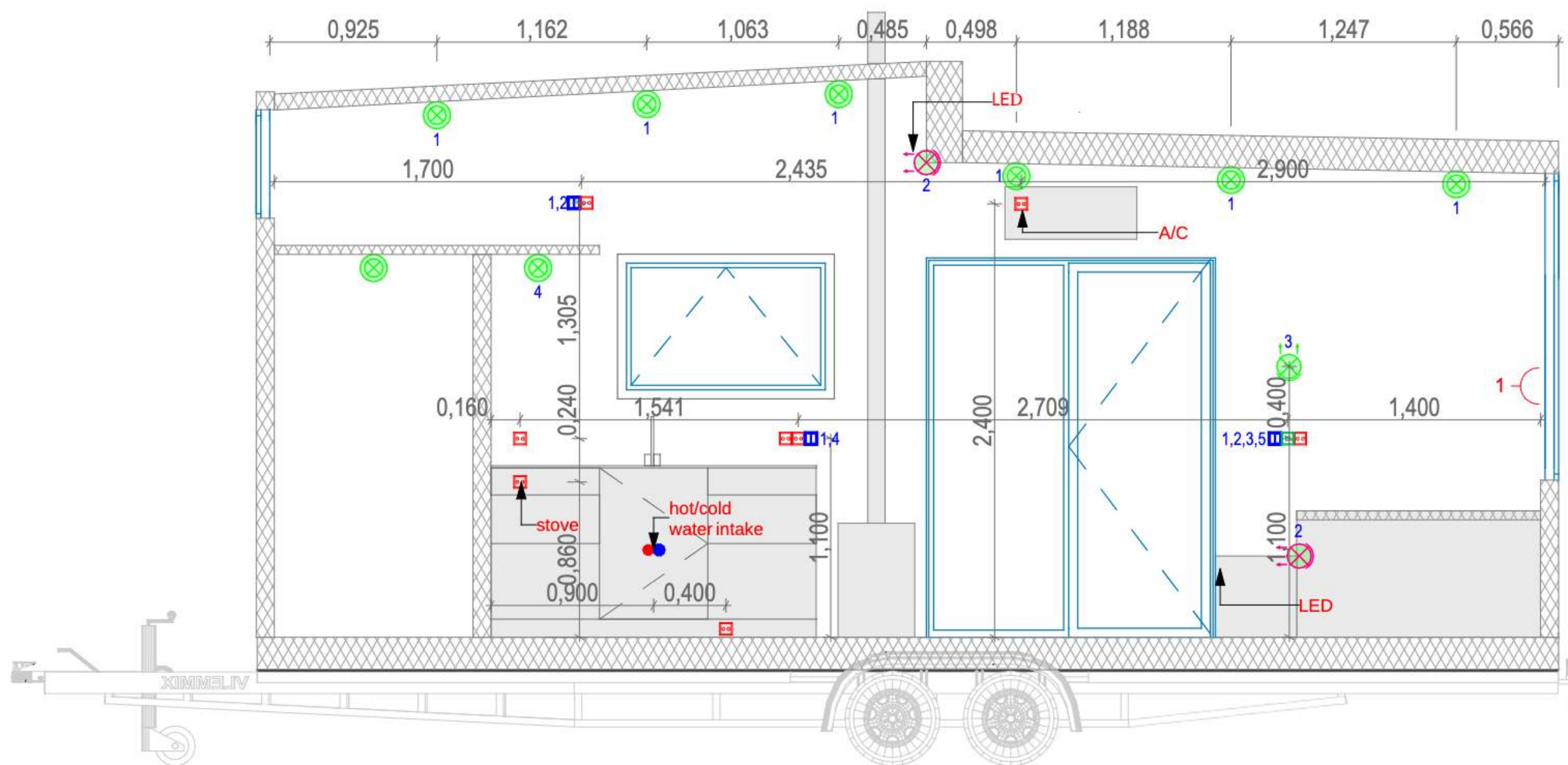
LOFT
BASIC

2

LOFT
STANDARD

3

LOFT
OFF-GRID



TECHNICAL SPECIFICATION FOR BASIC PACKAGE:

EXTERIOR:

- VLEMMIX TRAILER, LENGTH 8.7 M
- SIZE: LENGTH. 7.2 M X 2.55 M
- WEIGHT: 3500 KG
- WOOD PANELING, THERMOWOOD OR STEEL SHEETS
- 2-PANE WINDOWS AND DOORS
- ALUMINIUM ROOF
- LIGHT GAUGE STEEL FRAME

1

BASIC

FROM 25.000 EUR

BASIC SILVER



BASIC BLACK



BASIC STEEL



TECHNICAL SPECIFICATIONS FOR STANDARD PACKAGE:

DIMENSIONS & WEIGHT:

- LENGTH: 7,2 M
- WIDTH: 2,55 M
- HEIGHT: <3.5 M
- LIGHTWEIGHT TRAILER
- WEIGHT: UP TO 3500 KG

EXTERIOR:

- WOOD PANELING, THERMOWOOD OR STEEL PANELS
- WELL INSULATED 2-PANE WINDOWS AND DOOR
- LIGHTWEIGHT AND DURABLE ALUMINUM ROOF
- WINTER INSULATED WITH ECO-FRIENDLY MINERAL WOOL

INTERIOR

- 16 SQM LIVING AREA
- ROOM HEIGHT <3 M
- WOOD PANELING / PLYWOOD
- VINYL FLOORING / PARQUET

KITCHEN:

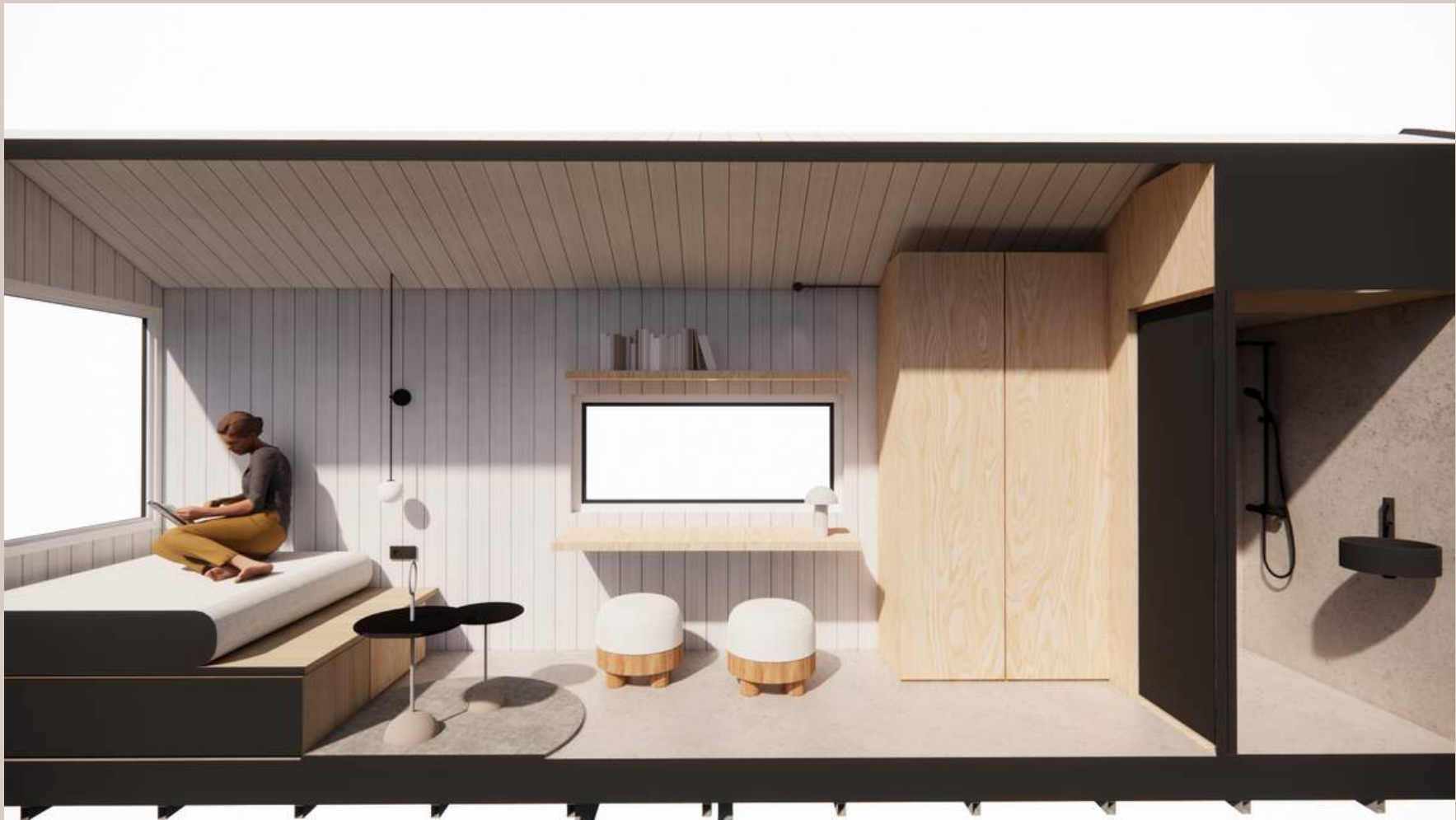
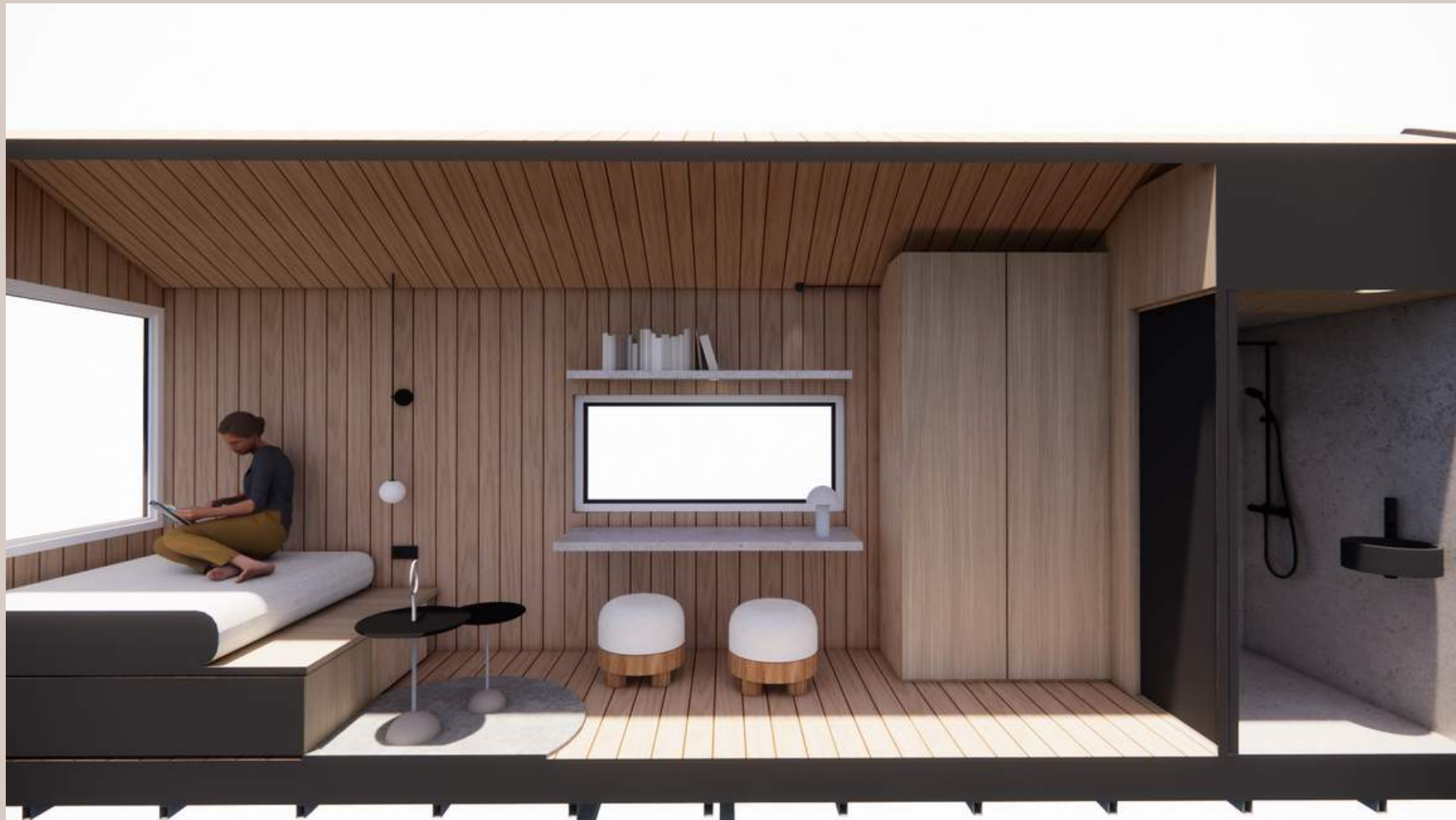
- CABINETS
- STOVE
- SINK AND TAP

BATHROOM:

- 2.5 SQ.M. BATHROOM AREA
- VINYL WALLS
- VINYL FLOORING
- SHOWER CABIN
- STONE MASS SHOWER PAD
- FLUSH TOILET
- WASHING BASIN AND CUPBOARD
- HOT WATER HEATER
- MIRROR

- ELECTRIC WIRING
- PLUMBING
- VENTILATION IN LIVING ROOM, KITCHEN AND BATHROOM





2

LOFT
STANDARD

EXTERIOR:

- VLEMMIX TRAILER, LENGTH 7.2 M
- SIZE: LENGTH. 7.2 M X 2.55 M X 4 M
- WEIGHT: 3500 KG
- THERMOWOOD OR STEEL SHEETS
- 2-PANE WINDOWS AND DOORS
- ALUMINIUM ROOF
- LIGHT GAUGE STEEL FRAME

FROM 35.000 EUR

AND MANY MORE



2

LOFT
STANDARD

FROM 35.000 EUR

INTERIOR:

- 16 SQ.M. LIVING AREA WITH A SLEEPING BED AND KITCHENETTE
- 5 SQ.M. LOFT AREA
- MAX. HEIGHT 3.30 M
- PIR INSULATION
- MINERAL WOOL INSULATION
- VENTILATION
- WOOD PANELING
- VINYL/LAMINATE FLOORING
- ELECTRIC WIRING
- LIGHT FIXTURES
- PLUMBING
- SHOWER
- TOILET
- HOT WATER HEATER
- MEZZANINE/LOFT FLOOR
- LADDERS

KITCHEN:

- CABINETS
- STOVE
- SINK AND TAP

BATHROOM:

- 2.5 SQ.M. BATHROOM AREA
- VINYL WALLS
- VINYL FLOORING
- SHOWER CABIN
- STONE MASS SHOWER PAD
- FLUSH/COMPOSTING TOILET (E.G. SEPRETT)
- WASHING BASIN AND CUPBOARD
- HOT WATER HEATER
- MIRROR
- VENTILATION

EXTRAS:

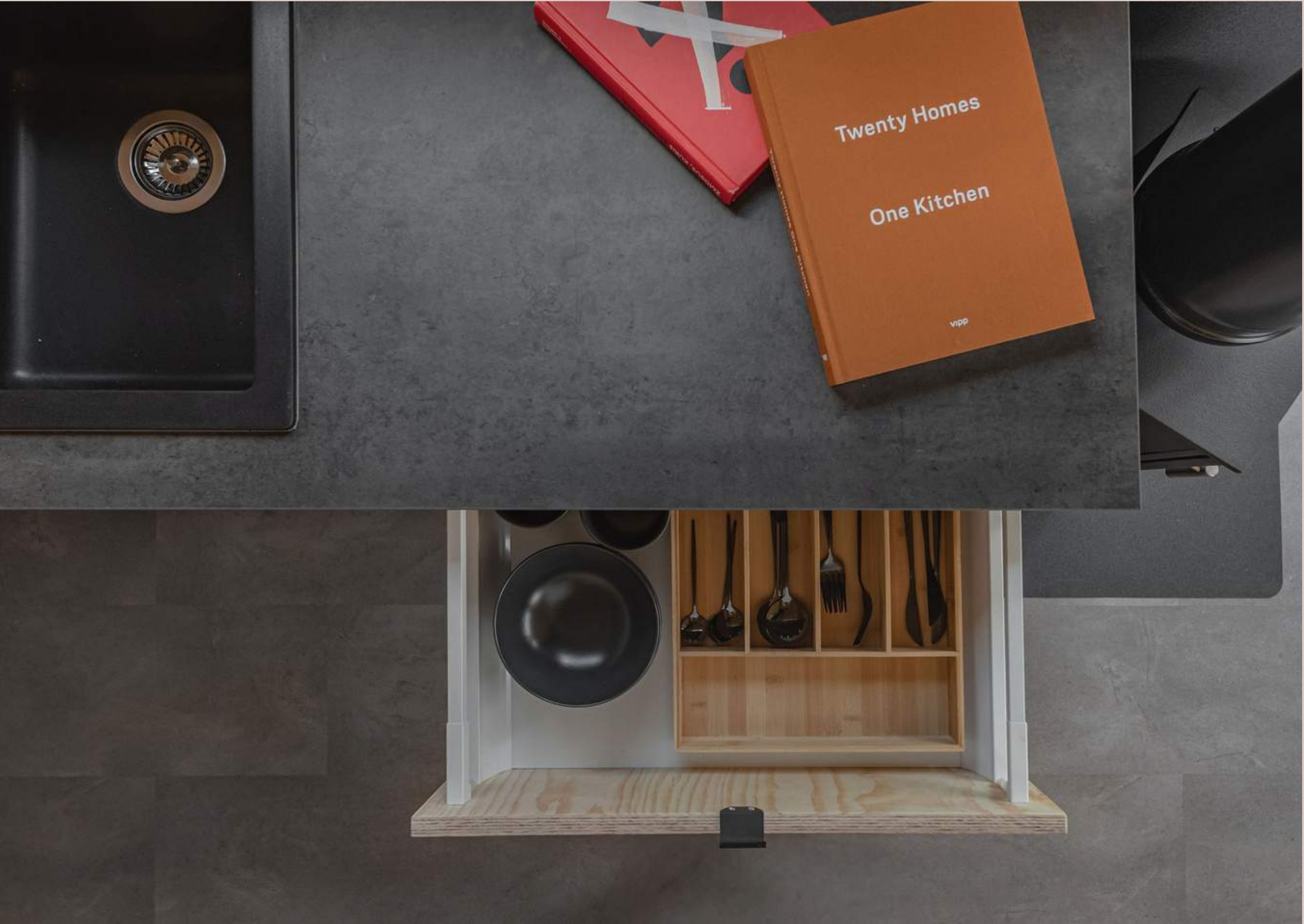
- A/C
- FRIDGE



















TECHNICAL SPECIFICATIONS

DIMENSIONS & WEIGHT:

- LENGTH: 7,2 M
- WIDTH: 2,55 M
- HEIGHT: <4 M
- LIGHTWEIGHT TRAILER
- WEIGHT: UP TO 3500 KG

EXTERIOR:

- THERMOWOOD OR STEEL PANELS
- WELL INSULATED 2-PANE WINDOWS AND DOOR
- LIGHTWEIGHT AND DURABLE ALUMINUM ROOF
- WINTER INSULATED WITH ECO-FRIENDLY MINERAL WOOL

INTERIOR

- 16 SQM LIVING AREA
- ROOM HEIGHT OF 3,30 M
- 5 SQ.M. LOFT AREA
- WOOD PANELING
- VINYL FLOORING

KITCHEN:

- CABINETS
- STOVE
- SINK AND TAP

BATHROOM:

- 2.5 SQ.M. BATHROOM AREA
- VINYL WALLS
- VINYL FLOORING
- SHOWER CABIN
- STONE MASS SHOWER PAD
- FLUSH/COMPOSTING TOILET (E.G. SEPRETT)
- WASHING BASIN AND CUPBOARD
- HOT WATER HEATER
- MIRROR

- ELECTRIC WIRING
- PLUMBING
- VENTILATION IN LIVING ROOM, KITCHEN AND BATHROOM



READY TO EMBARK ON YOUR TINY HOME ADVENTURE?



+370 610 62888

hello@baltictinyhouse.com

Sales: Bright Red Ventures HQ, UK

+44 7403 400530

distributors@baltictinyhouse.com

Manufacturing: H. Manto g. 76, Lithuania

www.baltictinyhouse.com