



**AMMATTIKORKEAKOULU**  
*University of Applied Sciences*

**Your partner at research  
and development**



## THIS IS LAUREA

- Multidisciplinary University of Applied Sciences with ambitious Research & Development (R&D) operations
- Agile partner seeking solutions to current and future challenges
- Develops cutting-edge solutions together with partners



About **100** RDI projects with external funding



**3** research programmes



Over **100** corporate partners with Key Partner status



Study programmes on **Bachelor's** and **Master's levels**: Social services and Nursing, Business Management & Information and Service Business



Laurea's NPS (Net Promoter Score): **69**



Part of the **PIONEER** European University Alliance



Awarded the **Quality Label** for Excellence in Higher Education by the Finnish Educational Evaluation Centre (FINEEC)

## WHY PARTNER WITH US?

By leveraging these strengths, Laurea delivers concrete, impactful, and innovative solutions to meet the evolving needs of society.



Reliable and competent partner.

Strong expertise in implementing successful projects.

Extensive national and international networks to support RDI.

In-depth understanding and experience of various funding instruments.

High-level expertise in user centric design thinking, participatory design, service design and facilitating co-creation.

Rapid experiments and practical implementation of innovations through Living Labs.

Advanced digital solutions in social and health care, security, and service business sectors.

Strong commitment to the principles of sustainable development and promotion of the circular economy & a strong expert in ecosystem cooperation.

In-depth knowledge of evaluation methods and impact assessment.

Integrates students into research activities through Learning by Developing pedagogical action model.

A strong expert in ecosystem cooperation.



## **SUSTAINABLE AND VERSATILE SOCIAL AND HEALTH CARE PROGRAMME PROMOTES THE WELLBEING OF THE POPULATION**

Changing demography, globalisation, technological development and transformation of work have a strong effect on social structures and action models as well as the well-being of the population. We utilise technology and digitalisation, and work in multi-professional manner to solve the challenges. We aim to strengthen inclusion and sustainable development in society, and pay attention to ethical considerations in answering future needs.

### **Project examples**

#### **ENACT**

Environmental Effect  
on Health Care and  
Wellbeing and Active  
Interventions  
(Horizon Europe)

#### **SOSECE**

Socially Sustainable  
Early Childhood  
Education Future  
(Erasmus+)

## **SERVICE BUSINESS AND CIRCULAR ECONOMY PROGRAMME DEVELOPS RESPONSIBLE AND SUSTAINABLE BUSINESS OPERATIONS**

We envision a society that is more sustainable –economically, socially and environmentally. Research programme strives to create regional and new business development that leads towards sustainable value creation and circular economy transition. To achieve that we use service design and co-creation methods, develop ecosystems and business activities. We promote service innovations and circular economy, and provide Living Labs as real-world testing environments.

### **Project examples**

#### **FOOD WASTE ECOSYSTEM**

Reducing food waste  
and recovering  
waste food  
(ERDF)

#### **CO2JUMP**

Developing the climate  
sustainability of  
SMEs' business and  
the municipality's  
pioneering role as a  
solver of climate issues  
(ERDF)

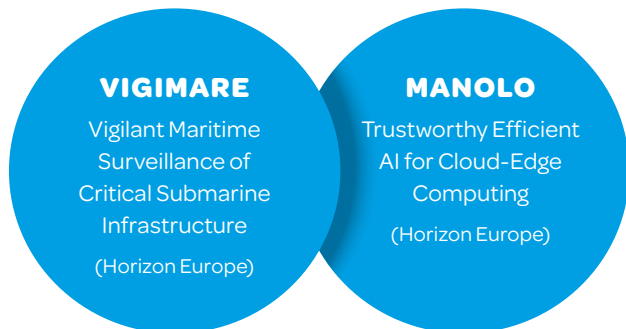




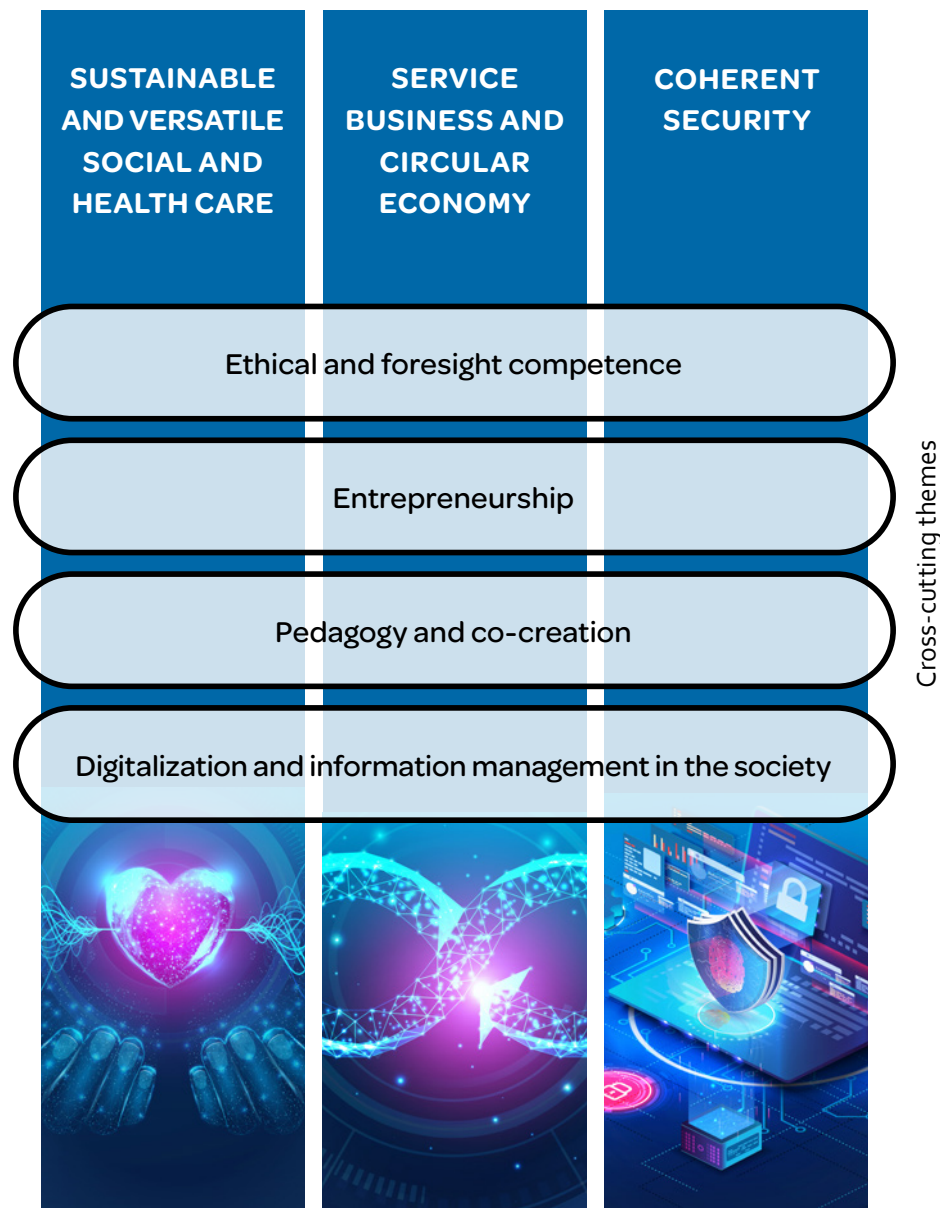
## COHERENT SECURITY PROGRAMME DEVELOPS SECURITY SOLUTIONS TO MEET SOCIETY'S CHANGING NEEDS

We work with national and international partners — practitioners, academics, industry leaders, communities and NGOs — to enhance the resilience of critical infrastructure, and keep our society secure against current and future threats. Our work draws from the experiences of our experts, who have helped communities to prepare for Arctic oil spills, wildfires, tropical hurricanes, acts of terrorism and cybersecurity incidents. Laurea's focus on co-creation ensures our projects emphasize real-world needs and practical solutions. Our experts also bring a range of specialized skills, including exercise design and evaluation, facilitation, and risk analysis.

### Project examples



## LAUREA'S RESEARCH PROGRAMMES AND CROSS-CUTTING THEMES





## LIVING LAB ENVIRONMENT

**Living Labs offer diverse opportunities for students and partners to develop and test innovative solutions in real-world environments. We have extensive experience in developing open innovation Living Lab environments and are actively involved in the Europe-wide Living Lab network (ENoLL).**

- Circular Economy Living Lab: Focuses on developing solutions for sustainable development and the circular economy.
- Digital Living Lab: Provides a project-based learning environment utilizing new technologies such as robotics, virtual reality (VR), augmented reality (AR), 3D modeling and printing, drones, sensor technology (IoT), and artificial intelligence (AI).
- BarLaurea Training Restaurant: Serves as a learning environment for students in the restaurant industry, combining hands-on work experience and customer service.
- Multisensory Space and Methods: Develops multisensory learning and development environments to support, for example, language learning and integration.
- Physiotherapy and Health and Wellbeing Promotion Living Lab: Collaboration is undertaken with the university's strategic partner network, providing students with internship opportunities.
- Living Lab for Integration and Language Learning: Explores innovative solutions for language learning and multilingual communication.

## INTERESTED IN COOPERATION? CONTACT US



### SANNA JUVONEN

Director, RDI collaboration  
+358 9 8868 7187  
[sanna.juvonen@laurea.fi](mailto:sanna.juvonen@laurea.fi)



### MARKKU ANTTONEN

Director, service business and circular economy  
+358 50 409 8195  
[markku.anttonen@laurea.fi](mailto:markku.anttonen@laurea.fi)



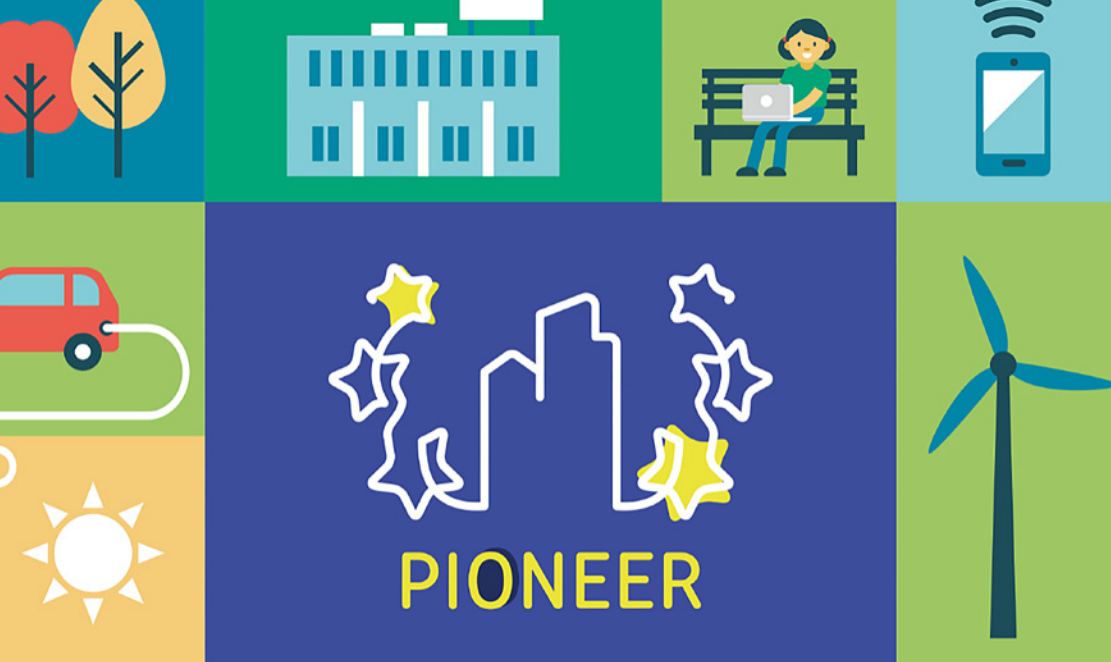
### SARI HEIKKINEN

Director, sustainable and versatile social and health care  
+350 40 743 13 15  
[sari.heikkinen@laurea.fi](mailto:sari.heikkinen@laurea.fi)



### JARMO SEPPÄLÄ

Director, coherent security  
+358 50 536 45 18  
[jarmo.seppala@laurea.fi](mailto:jarmo.seppala@laurea.fi)



## LAUREA IS PART OF THE PIONEER EUROPEAN UNIVERSITY ALLIANCE

The PIONEER Alliance of ten European Higher Education Institutions aims to shape the future of inclusive, sustainable and resilient cities providing students and lifelong learners dedicated skills in a European environment.

The universities train altogether over 130.000 students with more than 17.500 faculty and staff members on 33 campuses, 32 cities and 16 regions. All PIONEER partners are interested in the development of education and RDI activities focused on the future cities to serve societal issues and needs. The PIONEER Alliance will orchestrate pan-European learning co-creation that link Education and Research, Development and Innovation (RDI) in a Knowledge Hub in constant interactions with its Ecosystems in a Forum in order to provide high quality education that will meet the needs of the European labour market and future inclusive, sustainable and resilient cities.



**Co-funded by  
the European Union**

## QUALITY LABEL FOR HIGHER EDUCATION

The Finnish Education Evaluation Centre (Karvi) awarded Laurea the excellence quality label for higher education as a recognition of high-quality development work.



The evaluation panel highlighted three key aspects of Laurea's operations:

- Exceptionally strong evidence and practices in RDI activities and their development.
- Pioneering role in developing societal engagement and related practices.
- Boldly crossing boundaries. Laurea actively leverages its alumni and other networks in university development work.

## LAUREA RECEIVES FIVE-STAR QUALITY CERTIFICATE

In 2024, Laurea University of Applied Sciences underwent an EFQM model-based evaluation in collaboration with Excellence Finland (formerly the Finnish Quality Association), focusing on its research, development, and innovation (RDI) activities. As a result, Laurea's star rating increased from four to five stars. Compared to other organizations in Finland assessed using the EFQM model, Laurea's results in all evaluation areas were at or above the median level.







**Our research programmes' bring on extensive expertise in solving society's biggest challenges. Welcome to partner with us.**

Comments from our Partners:

”

*Ability to help and level of service has been great. Skills in communicating to partners and internationally.*

”

*The coordination and management were really appreciated.*

”

*Very good team that focused strongly on ensuring good results from all project partners.*