



אוניברסיטת חיפה  
UNIVERSITY OF HAIFA  
جامعة حيفا

# Expression of Interest in Horizon Europe 2026

The Minerva Center on  
Intersectionality  
in Aging (MCIA)

*Building bridges between multiply marginalized  
older adults and mainstream society*



## About the Center

*The Minerva Center on Intersectionality in Aging (MCIA), based at the Faculty of Social Welfare and Health Sciences at the University of Haifa, was founded in 2019. It initiates innovative, interdisciplinary and multi-method research and implementation projects focused on multiply marginalized*

*We focus on older LGBTQI+ people, immigrants and refugees, people with lifelong disabilities, survivors of long-term violence and abuse, and older adults involved in the criminal justice system, developing evidence-based models, training and professional guidance for professionals.*

*Co-led by eleven Israeli and German principal investigators, MCIA addresses these issues especially in times of crisis such as the pandemic and the ongoing war.*

# Core research domains

Violence and abuse across the life course – **lifetime abuse**, intimate partner violence in later life, financial exploitation, abuse in **religious and Arab communities**

**Lifelong disabilities** and ageing: socio-legal needs, rights and everyday lives of older persons with disabilities and their families

**Aging in LGBTQI** communities: mental health, end-of-life, intimacy and social inclusion among older LGBTQI persons

**Law, human rights and ageing**

**Immigration, displacement** and old age, intergenerational relations, and experiences during war and forced migration.

Significant life-changing events: **war and other crises** as they affect marginalized older adults, including loneliness, mental health, displacement and loss

**Crime and criminal justice** in old age – ageing in prison, rehabilitation, and the lived experience of older offenders and older women in prostitution

## Methodological approach

*Intersectional and life-course perspectives*

*Advanced qualitative and mixed-methods designs*

*Comparative Israel–Germany research using SHARE, DEAS and other large surveys*

*Close collaboration with practitioners, NGOs and government bodies*

**33 seed grants (€118k) → 13+ papers;**  
**14 funded proposals (€390k+); 34 research seminars.**



Chair of Minerva Center on Intersectionality in Aging

## **Prof. Tova Band-Winterstein**

Prof. Tova Band-Winterstein is a gerontologist and social worker specializing in marginalized older adults and intersectional inequalities in late life. She initiated and chairs the Minerva Center on Intersectionality in Aging and assembled its senior, multidisciplinary team of Israeli and German scholars.

Prof. Band-Winterstein has led numerous national and international conferences and study groups, translating research into practice and policy, and has extensive experience mentoring young scientists, within structured programs of seminars, supervision and seed grants.



## CORE INVESTIGATORS

*Israeli Principal Investigators*



**Prof. Yaacov  
Bachner**

*Gerontology of  
marginalized groups;  
LGBTQI ageing, crime  
in old age, caregiving  
and family dynamics.*



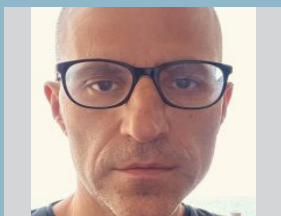
**Prof. Zvi  
Eisikovits**

*Family violence across  
the life course; lifetime  
abuse and qualitative,  
insider-perspective  
research.*



**Prof. Israel  
Doron**

*Law and aging; human  
rights of older persons,  
especially in contexts  
of crisis, disability and  
migration*



**Prof. Aviad  
Tur-Sinai**

*Economics of  
ageing; pensions,  
employment,  
healthcare and  
housing policy  
for older adults in  
different welfare*



**Prof. Amit  
Shrira**

*Intergenerational  
transmission of  
trauma (including  
Holocaust survivors  
and second/third  
generations), trauma*



**Dr. Boaz  
Tadmor**

*Internal medicine;  
community-based  
health and emergency  
care for marginalized  
older adults; end-of-life  
issues*

# CORE INVESTIGATORS

## *German Principal Investigators*



### **Prof. Sabine Andresen**

*Social pedagogy and family research; life-course, intergenerational relations and transmission of violence and justice.*



### **Prof. Axel Börsch-Supan**

*Economics of ageing; pension systems, old-age income inequality and large-scale comparative survey research (SHARE).*



### **Prof. Claudia Vogel**

*Ageing, migration and caregiving; minority caregivers, older migrants and refugees, health and social policy.*



### **Prof. Laura Romeu Gordo**

*Labour market integration, housing and welfare of older adults, with a focus on marginalized and migrant populations.*

# Horizon Europe Topics of Interest & MCIA Contribution

HORIZON-CL2-2026-01-TRANSFO-08

Migration and Asylum implementation; inclusion, integration and health



*MCIA contribution:*

- *Israel–Germany evidence on older migrants/refugees (incl. war-related displacement): health, mental health and integration (SHARE/DEAS + qualitative fieldwork).*
- *Co-design and evaluation of inclusive, culturally competent care/support pathways with communities, NGOs and service providers.*
- *Rights-based assessment of barriers (mobility, disability, language/culture) translated into implementation recommendations.*

---

HORIZON-CL2-2026-01-TRANSFO-09

Rethinking long-term care policy amid demographic shifts

*MCIA contribution:*

- *Evidence on long-term care and caregiving experiences in minority/low-income communities (Arab, ultra-Orthodox and migrant families; lifelong disabilities).*
- *Comparative pension/LTC regime analysis (Israel–Germany; European surveys incl. SHARE/DEAS) to assess equity, sustainability and reform options.*
- *Evaluation of caregiver support interventions; translation into toolkits/training and targeted policy*



# Horizon Europe Topics of Interest & MCIA Contribution

HORIZON-CL2-2026-01-DEMOCRACY-01 – Tackling gender-based violence against politically active women and LGBTIQ people

*MCIA contribution:*

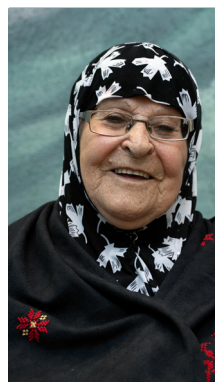


- *Scientific leadership on lifetime abuse/IPV/sexual violence in later life, incl. Arab, ultra-Orthodox and LGBTIQ communities (study groups; special issues).*
- *Intersectional life-course analysis of how ageism, sexism and homophobia shape safety, participation and leadership.*
- *Trauma-informed qualitative and mixed-methods designs to inform prevention/support guidelines and training.*

HORIZON-CL2-2026-01-DEMOCRACY-05 (CSA) – Research and Innovation Network for a Union of Equality

*MCIA contribution:*

- *Israel–Germany hub on intersectionality in ageing linking researchers, NGOs and policymakers on equality and inclusion.*
- *Evidence synthesis and co-produced guidelines on equality in later life (gender, SOGI, disability, migration/minority status).*
- *Network backbone: mentoring, methodological training, seed grants and stakeholder-facing dissemination.*



## Selectad Publications

*Band-Winterstein, T., Shulyaev, K., & Eisikovits, Z. (2024). Rethinking lifetime abuse in old age. Journal of Interpersonal Violence.*

*Gnaim-Mwasssi, N., Band-Winterstein, T., & Avieli, H. (2024). I'm a 45-year-old woman in the body of an 80-year-old: The multiple losses of living and aging in the shadow of prostitution. Journal of Nursing Scholarship.*

*Mahamid, R., & Band-Winterstein, T. (2024). From a humble identity to an identity of respect: Lifetime abuse among Arab Israeli older women. Journal of Elder Abuse & Neglect.*

*Tur-Sinai, A., Künemund, H., & Vogel, C. (2022). Inheritances and work for pay – Will the expected wave of bequests undermine active ageing policies? European Journal of Ageing.*

*Tolub, Y., Mor, S., & Doron, I. (2024). Old-age-based and disability-focused: A scoping literature review on the intersection of older persons' rights and disability rights. Indiana Health Law Review.*

*Sultan, A. (2022). Aging with drug use: Theorizing intersectionally with material gerontology and critical drug studies.*



### Contact

Dr. Olga Solntseva,  
Research Coordinator  
e-mail: [osolntsev@univ.haifa.ac.il](mailto:osolntsev@univ.haifa.ac.il)  
tel +972533468736