



**We make the power
of data possible.**



Z - W A V E
8 0 0

SMART HOMES

Explore the multiple dimensions of innovation, design, and IoT with Sensative Z-Wave sensors.

PORTFOLIO

L O R A W A N
S X 1 2 6 1
L R 1 1 1 0

APARTMENTS, BUILDINGS, CITIES & LOGISTICS

Professional sensors that are efficient, easy to install, and require almost no maintenance. And they look good.

+ A C C E S S O R I E S

SMART MADE SMARTER

Smart tools and accessories that simplify and extend the possible use cases.



IoT for homes: Z-Wave 800

IoT for cities and buildings: LoRaWAN

Sensative Z-Wave (800-series)

- » Sub-GHz
- » Meshed network up to 800 m range
- » Long Range (LR) range up to 1.5 miles
- » Smart start for easy provisioning
- » OTA firmware upgrades
- » S2 security
- » 10-20 years battery life

Sensative LoRaWAN (SX61/LR1110)

- » Sub-GHz
- » Up to 10 km range @free line of sight
- » Up to 2 km range in cities
- » Up to 500 m & +/- 3 floors in buildings
- » OTAA (Over the Air Activation & Configuration)
- » AES encrypted network & application security
- » Cloud assisted GNSS/Wifi positioning (LR1110)
- » 7-15 years battery life



SENSATIVE SENSOR PORTFOLIO

To monitor and optimize property & city operations

LoRaWAN



STRIPS

Guard
Comfort
Presence
Drip
Oil

LoRaWAN



SQUARE

Comfort
Sound
Presence
Air
Trackers

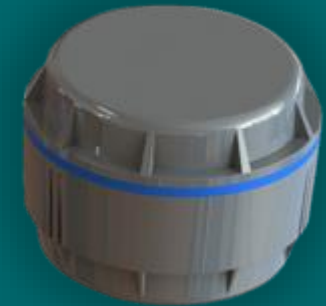
LoRaWAN



DOTS

Tracker
From Q1-25

LoRaWAN



PUCK

Presence
Distance

USE CASES



COMMERCIAL BUILDING

- Energy optimization
- Comfort optimization
- Climate control
- Space utilization
- Asset tracking
- People tracking
- Security
- Blinds management



HOME

- Managed Smart Home/Apartment
- Safety/burglary/theft
- Comfort (Temp, CO2, light, sound etc)
- Mold risk detection
- Fire
- Asset tracking
- Septic tank level



CITY

- Asset tracking
- People tracking
- Parking occupancy
- Level meters
- Public space safety & comfort
- Waste management



UTILITY/INDUSTRY

- Metering/Behind the meter
- Pro-active maintenance
- Grid monitoring
- People safety
- Water/Oil/XX leakage
- Gas leakage
- Level meters
- Security
- Asset tracking
- Level meters
- Parking occupancy
- Seat occupancy





SENSATIVE SENSOR PORTFOLIO

USP: Small form factor, designed for interior environment and long battery lifetime >10 years

UNIQUE FEATURES: NFC app as UI, position aware, multi-sensors



Communication



IP Class

STRIPS
196*15*3



GUARD
COMFORT
PRESENCE
DRIP
OIL

Magnet sensor for doors & windows.
Room sensor T/H & ambient light
Desk occupancy sensor. Active IR sensor.
Water leakage sensor for kitchen, bathroom, industrial etc. Capacitive sensor
Water and oil leakage sensor for industrial, generators etc. Capacitive sensor

LoRaWAN



IP68

LoRaWAN



LoRaWAN

LoRaWAN



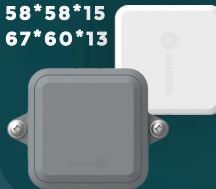
IP68

LoRaWAN



IP68

SQUARE
58*58*7
58*58*15
67*60*13



TRACKERS
COMFORT
SOUND
PRESENCE
AIR

Cloud supported 3D motion controlled GNSS/WIFI tracker
Ultra-slim & position aware room sensor with Temp & Humidity sensors
Position aware room sensor with T/H, light & sound sensors
Motion and presence IR sensor up to 4 m with T/H/P & ambient light sensors
Air quality sensor with Air Q index, CO2e, bVOC, T/H/P and ambient light sensors

LoRaWAN



IP68

LoRaWAN



LoRaWAN



LoRaWAN



LoRaWAN



DOTS
47*38*11



TRACKER

Tiny asset tracker for keyrings or glued/screwed to assets

LoRaWAN



IP68

PUCK
Ø45*30



RADAR

60 GHz radar sensor to use as Parking occupancy or distance meter up to 6.8 m

LoRaWAN



IP67



SENSATIVE SENSOR PORTFOLIO

USP: Small form factor, designed for interior environment and long battery lifetime >10 years

UNIQUE FEATURES: Oil leakage, indoor and outdoor positioning, AI powered digital nose and real time radon measurement



STRIPS
196*15*3



GUARD^(p)
COMFORT
PRESENCE^(pp)
DRIP^(p)
OIL^(pp)



LoRaWAN



IP68

LoRaWAN



LoRaWAN

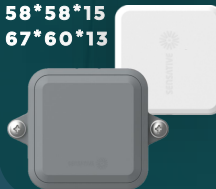
LoRaWAN



IP68

IP68

SQUARE
58*58*7
58*58*15
67*60*13



TRACKERs
COMFORT
SOUND
PRESENCE
AIR



LoRaWAN



IP68

LoRaWAN



LoRaWAN



LoRaWAN



LoRaWAN



LoRaWAN



DOTS
47*38*11



TRACKERs



LoRaWAN



IP68

PUCK
Ø45*30



RADAR



LoRaWAN



IP67

(p) – patented (pp) – patent pending

SENSATIVE STRIPS SENSORS



LoRaWAN[®]



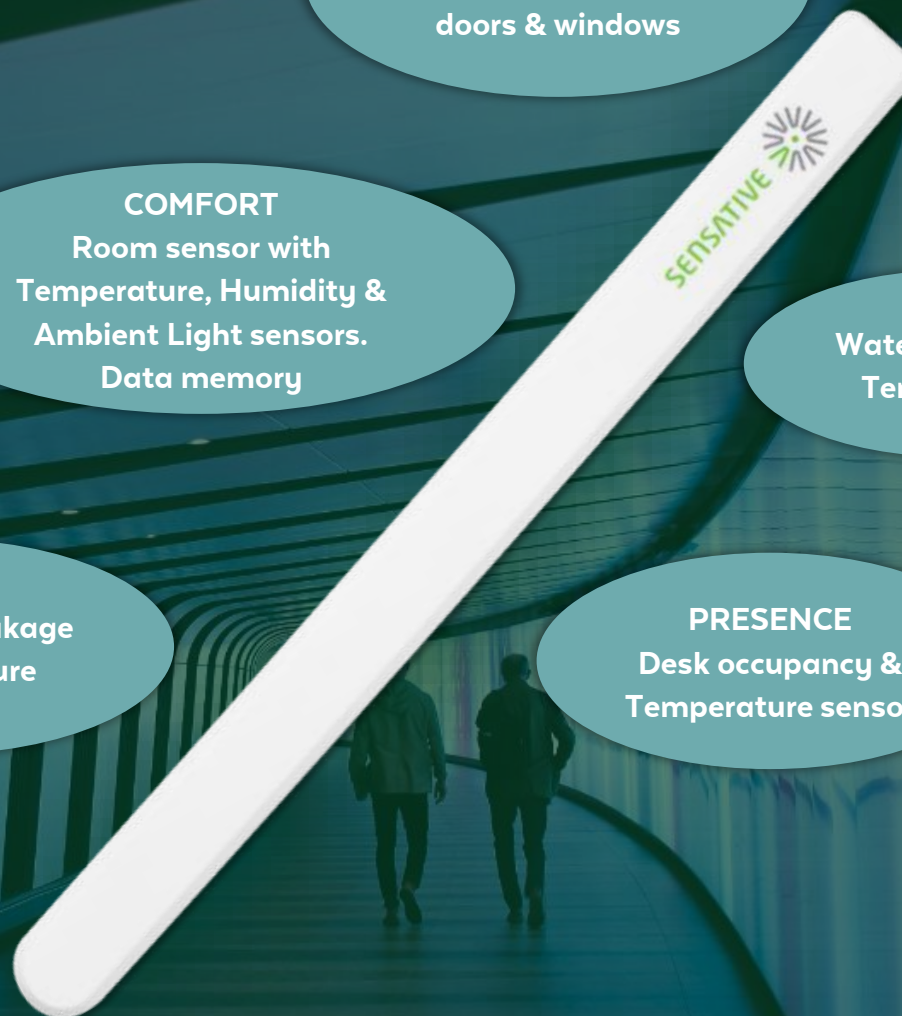
GUARD
Magnet sensor for
doors & windows

COMFORT
Room sensor with
Temperature, Humidity &
Ambient Light sensors.
Data memory

DRIP
Water leakage &
Temperature
sensor

OIL
Oil & Water leakage
+ Temperature
sensor

PRESENCE
Desk occupancy &
Temperature sensor



Strips Family of Z-Wave sensors

Smart Home sensors

Strips Z-Wave 800 series

- >10-year battery life
- 800m range (mesh)
- 1.5 miles range (Long Range/LR)
- SmartStart (fast and simple inclusion)
- S2 Security
- Compatible gateways

Three versions

- **Guard** magnet sensor for doors & windows
- **Drip** water leak & temp sensor, under sink, washing machines etc
- **Comfort** Monitor the room climate. Temp, humidity & ambient light. Use the slider button as a switch to turn on lights or any other action





STRIPS SENSORS FOR LoRaWAN®

Common features

- Ultra-thin (<3mm) & discreet
- Adhesive backing
- Life-time battery (10+ years)
- Long-range, up to 10 km/6 miles

Versions

- Comfort for indoor climate monitoring (T/H/LUX/M)
- Guard for open/close monitoring (M/t)
- Drip for water leak alerts (Cap/t)
- Oil for oil and water leak alerts (Cap/t)
- Presence for (desk) occupancy monitoring (IR/t/M)

Accessories

- Installer's toolkit
- +Clip



Strips Presence

Desk presence sensor

- Active IR sensor
- Detect presence up to 70 cm
- Magnet sensor (supports Switch)
- Temperature sensor (+/- 1 degree in room temp)
- OTA Configurable
- > 10 years battery life
- Supports Strips Switch to support applications as
 - Indicate when desk cleaning is done
 - Light control
 - etc
- LoRaWAN v1.0.4



STRIPS MULTI-SENSOR + DRIP OIL FOR LORAWAN



- 4 mm thick
- Leakage alarm
- Oil leakage alarm
- Temperature sensor (+/- 2 °C)
- > 10 years battery life
- IP67
- Patent pending





SENSATIVE's LoRaWAN SENSORS

w. GPS/WiFi Positioning & 3D Accelerometer



MODULAR

- Firmware with VSM (Virtual Sensor Machine)
- Downloadable sensor apps (OTA/NFC)
- Downloadable configuration (OTA/NFC)
- Battery options
- Sensor options



POSITION AWARE

- LR1110 chip-set
- Cloud supported positioning
- Outdoor (GPS/Beidou)
- Indoor (WiFi)



REMOTE

- UI
- Configure
- Upgrade application
- Download AI models
- Over The Air (OTAA)
- Over NFC (Locally)
- Secure connection
- Device2Device connectivity
- Mesh connectivity



SMART

- Adaptable
- Programmable
- Pre-trained algorithms & AI models
- Built-in data memory

SQUARE ROOM SENSORS

only 58*58 mm with 7-15 years battery life



SQUARE COMFORT

Accurate T/H

750 mAh/4 Ah

Ultra-slim – 7/15 mm thickness

SQUARE SOUND

Accurate T/H/, Ambient light,

Sound Pressure Level

4 Ah

Discreet - 15 mm thickness

SQUARE PRESENCE

Presence/Motion sensor

Accurate T/H, Barometer, Ambient light

4 Ah

Discreet - 15 mm

From Q1-2025

SQUARE AIR

Air Q index, CO₂e, bVOC

Accurate T/H, Barometer, Ambient light,

6 Ah

Discreet - 15 mm



SQUARE COMFORT

Room comfort sensor



- Excellent to use as room comfort sensor for heating control in offices, schools or homes.
- Accurate temperature ($\pm 0.2^{\circ}\text{C}$) & Humidity (1.8% rH) sensors
- Precision version available. Temp ($\pm 0.1^{\circ}\text{C}$) & Humidity (1.0% rH)
- Position-aware using WIFI positioning. (Optional cloud service)
- VSM (Virtual Sensing Machine) for sensor apps
- Configuration and app upgrades/change over LoRa
- NFC for configurations, FW upgrades & sensor status
- 750 mAh battery for 10-15 years battery life
- 4 Ah battery version available
- LoRaWAN (Semtech LR1110) v1.0.4
- 58*58*7 (15) mm, 750 (4000) mAh LiMnO₂ built-in battery
- Mount with adhesive or screws



SQUARE SOUND

Room & sound level sensor



- Monitor sound level in schools, work, hotel-rooms or AirBnB
- Sound Pressure Level (SPL) sensor (dB). Average and Maximum SPL
- Alarms using SPL thresholds and wake on sound feature
- Excellent to use as room comfort sensor for heating control in offices, schools or homes.
- Accurate temperature (+/- 0.2° C) & Humidity (1.8% rH) sensors
- Position-aware using WIFI positioning. (Optional cloud service)
- VSM (Virtual Sensoring Machine) for sensor apps
- Configuration and app upgrades/change over LoRa
- NFC for configurations, FW upgrades & sensor status
- 4 Ah built-in battery for >> 10 years battery life
- LoRaWAN (Semtech LR1110) v1.0.4
- Mount with adhesive or screws



SQUARE AIR

Advanced room sensor



- Excellent to use as room air quality for ventilation control in offices, schools or homes.
- Measures Air Quality Index IAQ and bVOC (level of exhaled air – breathable Volative Compounds)
- IAQ index as defined by Bosch (BME688). Weighted index based on multiple air contaminations.
- IAQ is a more expedient metric than CO2 for air quality and ventilation control
- Calculates CO2e (estimated CO2) based on bVOC levels.
- Square Air will not detect CO2 leakage from gas tanks, CO2 levels outdoors or any other CO2 from other sources than humans/animals breathing.
- Position-aware using WIFI positioning. (Optional cloud service)
- Temperature (+/- 0.2° C), Humidity, Ambient light (Lux) & Air pressure
- NFC & VSM
- Est. 6-7 years continuous measurements (ULP mode – 300 sec period). Up to 15 hours if used during office hours only. @Quarterly reporting + alarms. SF7.
- LoRaWAN (Semtech LR1110) v1.0.4
- 58*58*15 mm, 6 Ah LiMnO2 built-in battery
- Mount with adhesive or screws

IAQ Index	Air Quality	Impact (long-term exposure)	Suggested action
0 – 50	Excellent	Pure air; best for well-being	No measures needed
51 – 100	Good	No irritation or impact on well-being	No measures needed
101 – 150	Lightly polluted	Reduction of well-being possible	Ventilation suggested
151 – 200	Moderately polluted	More significant irritation possible	Increase ventilation with clean air
201 – 250	Heavily polluted	Exposition might lead to effects like headache depending on type of VOCs	optimize ventilation
251 – 350	Severely polluted	More severe health issue possible if harmful VOC present	Contamination should be identified if level is reached even w/o presence of people; maximize ventilation & reduce attendance
> 351	Extremely polluted	Headaches, additional neurotoxic effects possible	Contamination needs to be identified; avoid presence in room and maximize ventilation



LIFE FINDER

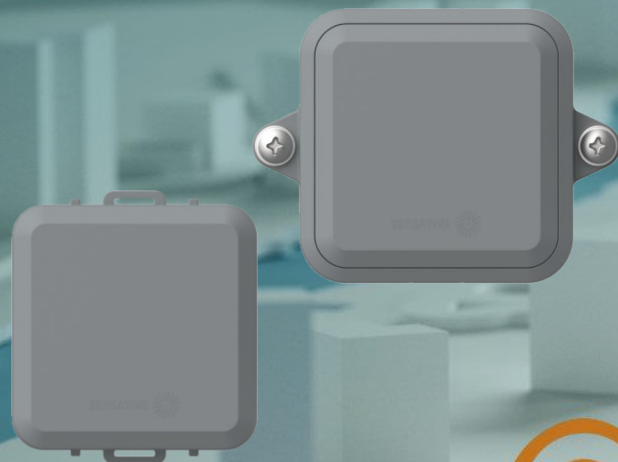
TRACKERS

Locate me or my assets



DOTS LIFE FINDER

IP68
44*38*14 mm
0.9 Ah battery
Wearable



SQUARE Xtreme

IP68
60*64*13 mm + frame
4 Ah battery



DOTS Xtreme

IP68
47*38*11 mm
1.2 Ah battery
From Q4-24



SQUARE

Indoor
58*58*7/15 mm
0.75-6 Ah battery

- Cloud assisted positioning using GPS, Beidou & WiFi
- Motion controlled by 3D accelerometer
- NFC for local access with mobile phone as UI
- Up to 10 years battery life @ hourly positioning
- Install with adhesive, screws, cable ties, key ring or wristband

Optional sensors include

- Temperature sensor
- Barometer (Air pressure) for 3D positioning indoors
- Wake-on-sound detector
- Water sensors (man overboard)
- Alarm button



RADAR

Parking space occupancy sensor

Distance sensor

- Level sensor for silos, tanks etc
- Snow level
- Waste bin and container levels

60 GHz pulsed coherent radar based on the Acconeer A111 sensor

0.3 – 6.8 m radar range with 10 mm accuracy

2 different lenses available for $\pm 60^\circ$ or 30° radar beam width

Temperature sensor

Position-aware using WIFI positioning. (Optional cloud service)

NFC & VSM

Downloadable & configurable radar algorithms for various applications

Up to 10 years battery life

IP67 with replaceable battery

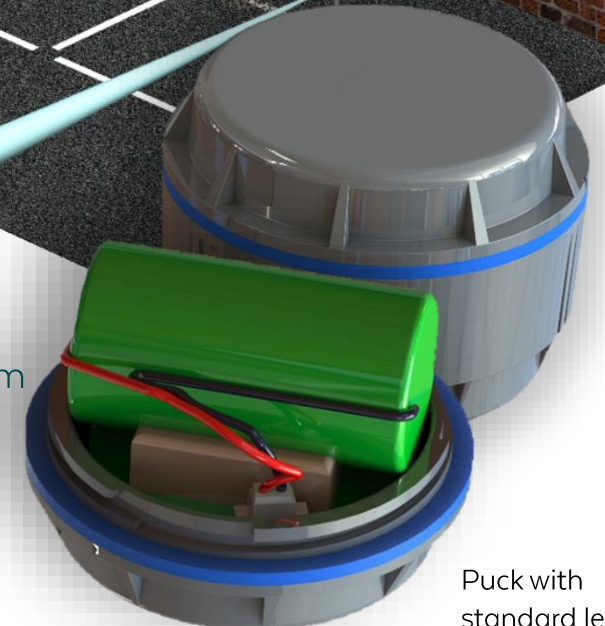
IP69 permanently sealed closing available on demand



PUCK

Diameter 45 mm

Height 30/40* mm



* Narrow lens

Puck with
standard lens

Airport asset tracking for Airport

Business case: Optimization of airport service operations through tracking of wheel chairs, passenger transportation and luggage carts.

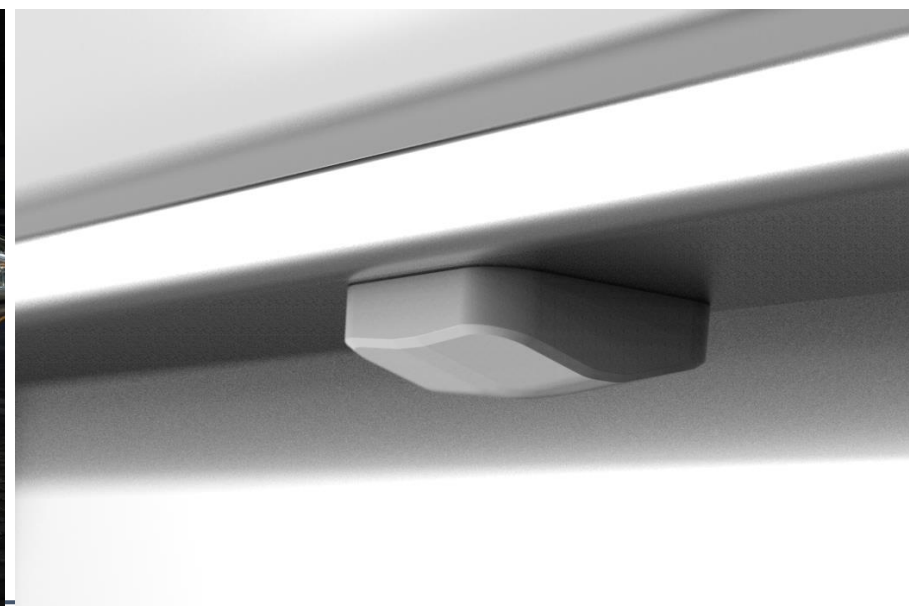
Solution: Sensative Square Tracker, Yggio Platform combined with Combain Indoor Positioning Service and a Sensative End-user App.



Seat occupancy solution

Business case: Revenue optimization for passenger trains through knowing actual occupancy which allows for additional sales of seats.

Solution: Sensative Prism Presence Sensor (radar) combined with the Yggio Platform.



Temperature Monitoring of Commercial Refrigerators & Cold Chains

Business case: Shop owners can avoid heavy penalties from health authorities and bad reputation in the market.

Solution: Sensative's Temperature Sensor with built-in data memory combined with the Yggio Platform, and a monitoring App.

Benefits:

- Securing safety of food or medicine
- Traceability of temperature history



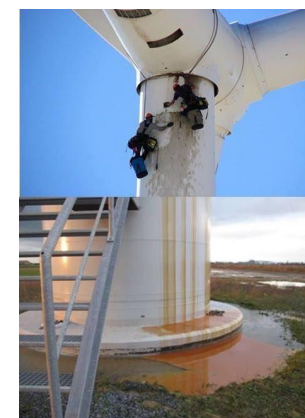
Detection of Liquid Leakages

Business case: Avoidance of cost of any liquid leakage damages such as damaged property, generators, or oil spill.

Solution: Sensative Drip Sensor combined with the Yggio Platform and a monitoring App.

Benefits:

- Automatic water/machine shut off
- Reduced damage



CREATING A SMARTER SOCIETY!

Mats Pettersson, CTO
mats.pettersson@sensative.com
+46 705 100 384



SMART BUILDING



SMART CITY



SMART HOME



SMART UTILITIES



SMART AGRICULTURE



SMART SOCIETY

"MOST INNOVATIVE IOT
COMPANY IN EUROPE 2021"



40-60%
IoT value lost without
interoperability
(McKinsey)



250 000
Sensors delivered
globally since 2015

>250
Customers being
digitalized

>100
Customers running
open unified IoT