



# Strengthening Sustainable and Digital Trade Routes and Logistics Concepts Between Eastern Partnership Countries and with the EU

## AI in transport digitalization: enablers, requirements and realistic benefits

**Aivaras Vilkelis**

AI EXPERT OF MC MOBILITY CONSULTANTS

**26 November 2025**



Implemented by



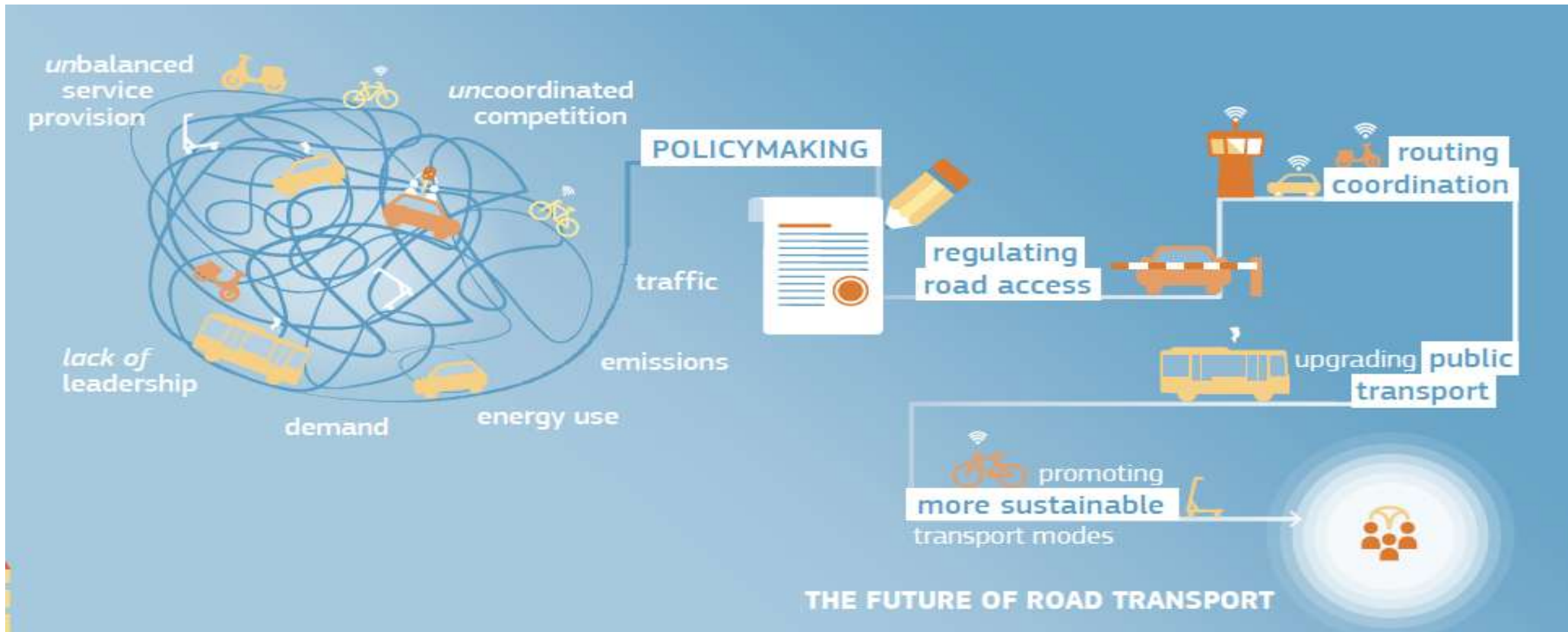
# AI - Vision for the European mobility future



# The problem



# The solution: transport sector digitalization



# The Modern Supply Chain: A Data Explosion and AI

Today's transport network is no longer just physical; it's a massive digital ecosystem:

- **IoT Sensors:** Real-time data on location, temperature, and stock.
- **ERP, TMS, WMS:** Systems managing orders, transport, and inventory.
- **Digital Documents:** E-Bills of Lading, digital customs declarations, invoices.

This has created a "data flood" drowning in information but starving for wisdom.

**The Solution: Artificial Intelligence (AI)** is the engine that turns this massive data stream into intelligent, automated, and predictive actions.



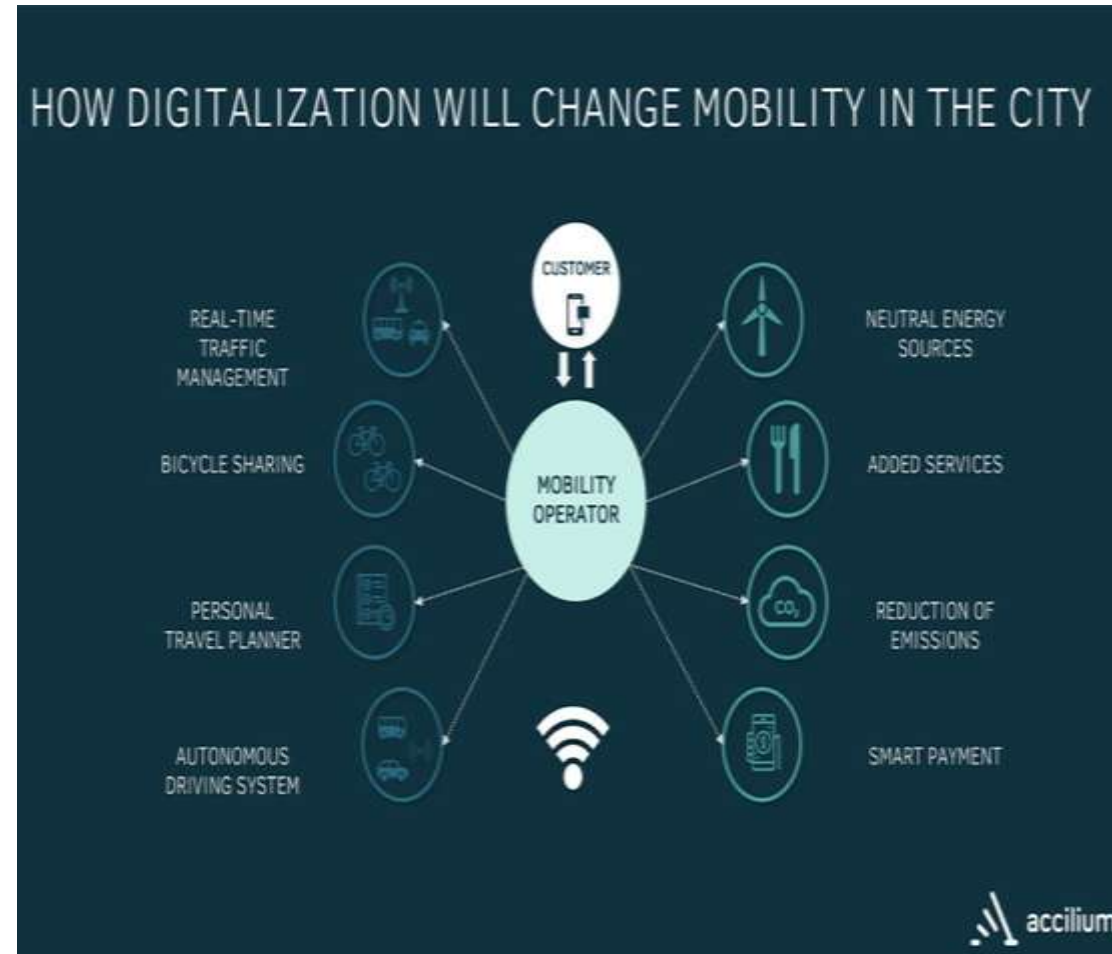
# A strategy for sustainable and smart mobility. Europe's transport path to the future (1)

*“Proactively shaping our future mobility by developing and validating new technologies and services is key to staying ahead of the curve.*

*The EU will therefore put in place favorable **conditions for the development of new technologies and services, and all necessary legislative tools for their validation.***

*We can expect the emergence and wider use of drones (unmanned aircraft) for commercial applications, autonomous vehicles, hyperloop, hydrogen aircraft, electric personal air vehicles, electric waterborne transport and clean urban logistics in the near future.*

*An enabling environment for such game-changing mobility”.*





# A strategy for sustainable and smart mobility. Europe's transport path to the future (3)

*“The digital transformation of the transport and mobility sector requires further **efforts related to data availability, access and exchange.***

*Currently, they are often hampered due to unclear regulatory conditions, a lack of an EU market for data provision, the absence of an obligation to collect and share data, incompatible tools and systems for data collection and sharing, different standards, or data sovereignty concerns.*

***The availability of data and statistics is also essential, in particular real time data, as it enables better services to citizens or transparency of supply chains in freight transport”.***



# AI in transport digitalization

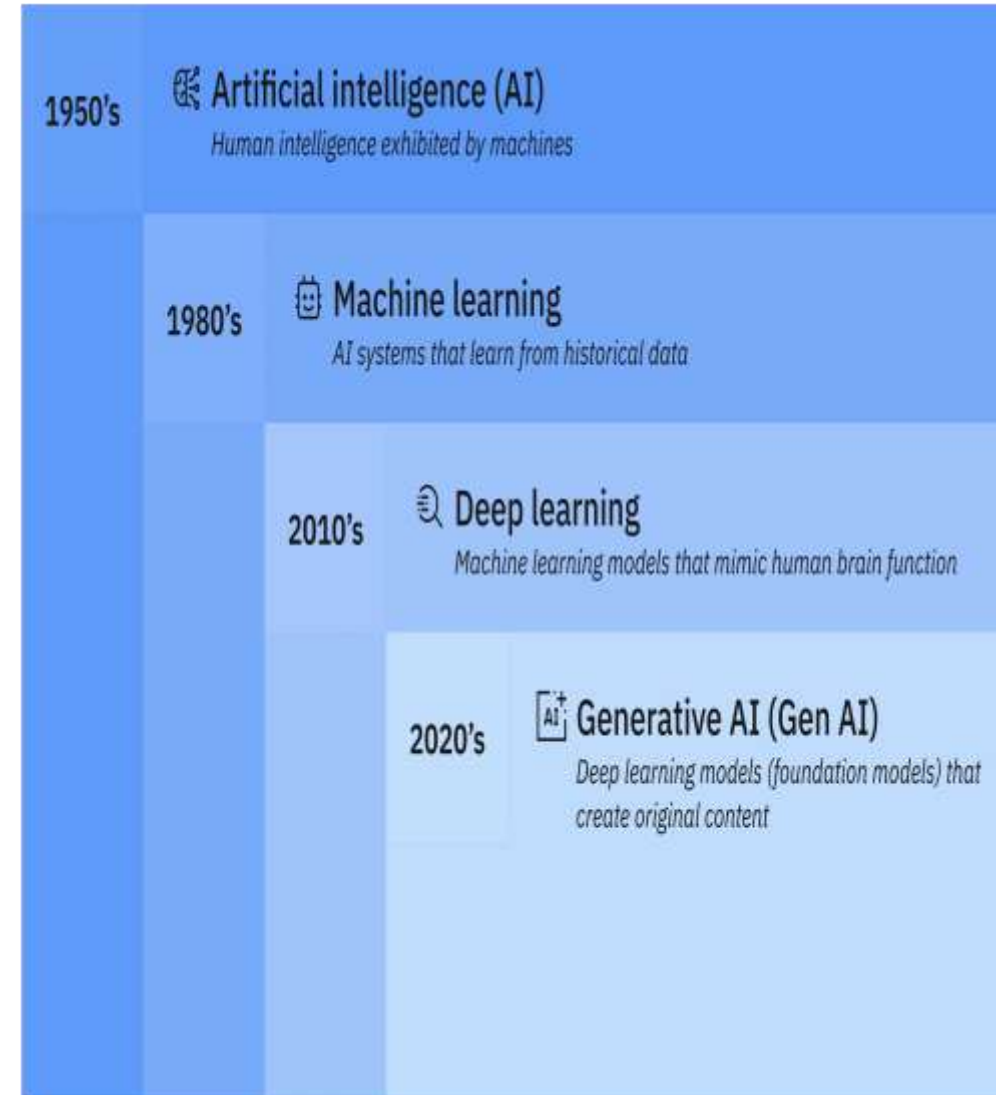


# AI – Artificial intelligence meaning

**Artificial intelligence (AI)** refers to the capability of computational systems to perform tasks typically associated with human intelligence, such as learning, reasoning, problem-solving, perception, and decision-making.

It is a field of research in computer science that develops and studies methods and software that enable machines to perceive their environment and use learning and intelligence to take actions that maximize their chances of achieving defined goals:

- Applications and devices equipped with AI can see and identify objects
- They can understand and respond to human language
- They can learn from new information and experience
- They can make detailed recommendations to users and experts
- They can act independently, replacing the need for human intelligence or intervention (a classic example being a self-driving car)



# AI – a solution for today's problems in transportation

- **Artificial Intelligence is no longer a futuristic concept** in transportation - it's an operational reality.
- AI's primary role in transport has matured from simple data analysis to sophisticated, real-time decision-making.
- **Across road, rail, air, and sea**, AI has moved from isolated pilot projects to **being a core component of strategic operations**.
- However, its application is uneven, marked by significant breakthroughs in some areas and considerable friction in others.
- The most significant impact is currently centered on optimization and prediction, rather than the fully autonomous systems that often capture headlines.



# AI matters for transport

- **AI for transportation** brings a host of advantages, **revolutionizing the industry and enhancing** various aspects of the transportation ecosystem.
- AI, in tandem with other emerging technologies like IoT, machine learning, cloud computing, big data analytics, and 5G, opens up a world of opportunities and new horizons for interconnectivity between vehicles, paving the way for more efficient, advanced, and safer transportation systems.
- **Artificial intelligence in the transportation industry is reshaping the entire landscape.**
- From optimizing traffic management to enhancing vehicle safety, the multiple applications of AI in transportation justify why the industry is witnessing an exponential surge and why organizations are adopting the technology.



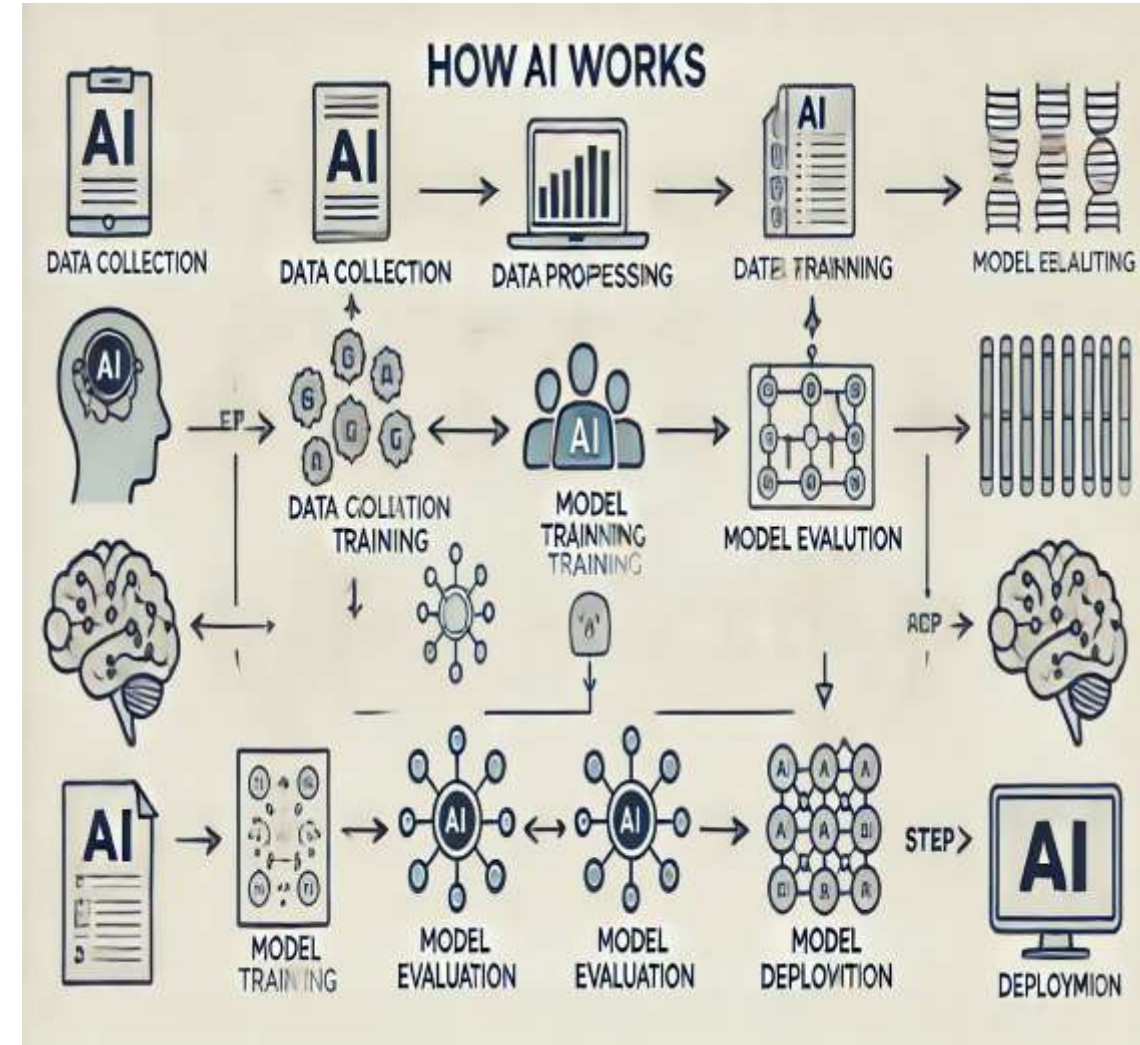
# AI enablers

AI isn't one single thing. It's a toolkit of "engines" that power specific, high-value tasks across the supply chain:

- AI tools are software applications that utilize artificial intelligence algorithms and technologies to perform tasks that typically require human intelligence, to automate processes, provide insights, and enhance the efficiency and accuracy of various operations.

Types of AI Technologies Used in AI Tools:

- **Machine Learning (ML)**
- **Natural Language Processing (NLP)**
- **Computer Vision**
- **Robotic Process Automation (RPA)**



# The Enablers: What Makes AI Possible?

AI TECHNOLOGY	WHAT IT IS (THE "ENGINE")	CORE APPLICATION
<b>Machine Learning (ML)</b>	The <b>Predictive Analyst</b> . Finds hidden patterns in historical data to forecast future outcomes.	<b>Demand Forecasting</b> (Warehousing), <b>Predictive Maintenance</b> (Logistics), <b>Risk Scoring</b> (Customs).
<b>Natural Language Processing (NLP)</b>	The <b>Intelligent Reader</b> . Understands and extracts information from human language (text or speech).	<b>Automated Data Entry</b> from invoices & packing lists (Customs), Customer Service Bots (Logistics).
<b>Computer Vision (CV)</b>	The <b>Super-Powered Eyes</b> . Analyzes and interprets images and videos.	<b>Cargo Scanner Analysis</b> (Customs), <b>Damage Detection</b> (Warehousing), Autonomous Robots (All).
<b>Robotics &amp; Automation</b>	The <b>Physical Workforce</b> . AI-guided robots that perform physical tasks.	<b>Autonomous Mobile Robots (AMRs)</b> for picking (Warehousing), Automated Sorting (Logistics).

# The Requirements: Needs for Success

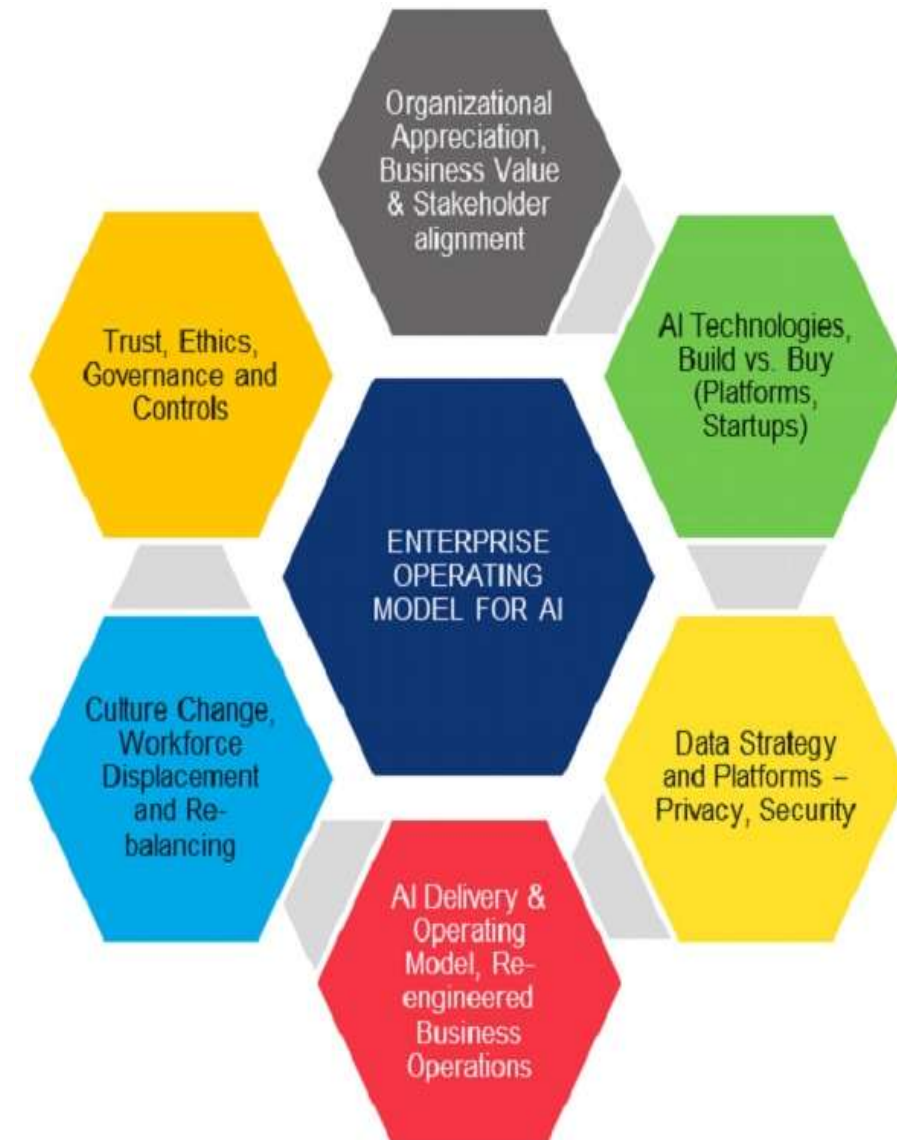
**YOU CAN'T JUST "BUY AI." A SUCCESSFUL IMPLEMENTATION REQUIRES A STRONG FOUNDATIONS:**

## Data Foundation:

- **High-Quality, Clean Data:** AI is "garbage in, garbage out." Historical data must be accurate, complete, and standardized.
- **Data Integration:** AI needs a complete picture. This requires connecting siloed systems (WMS, TMS, Customs portals) via **APIs** (Application Programming Interfaces).
- **Data Governance & Security:** Clear rules on who can access data, ensuring compliance with regulations (e.g., GDPR) and protecting sensitive trade information.

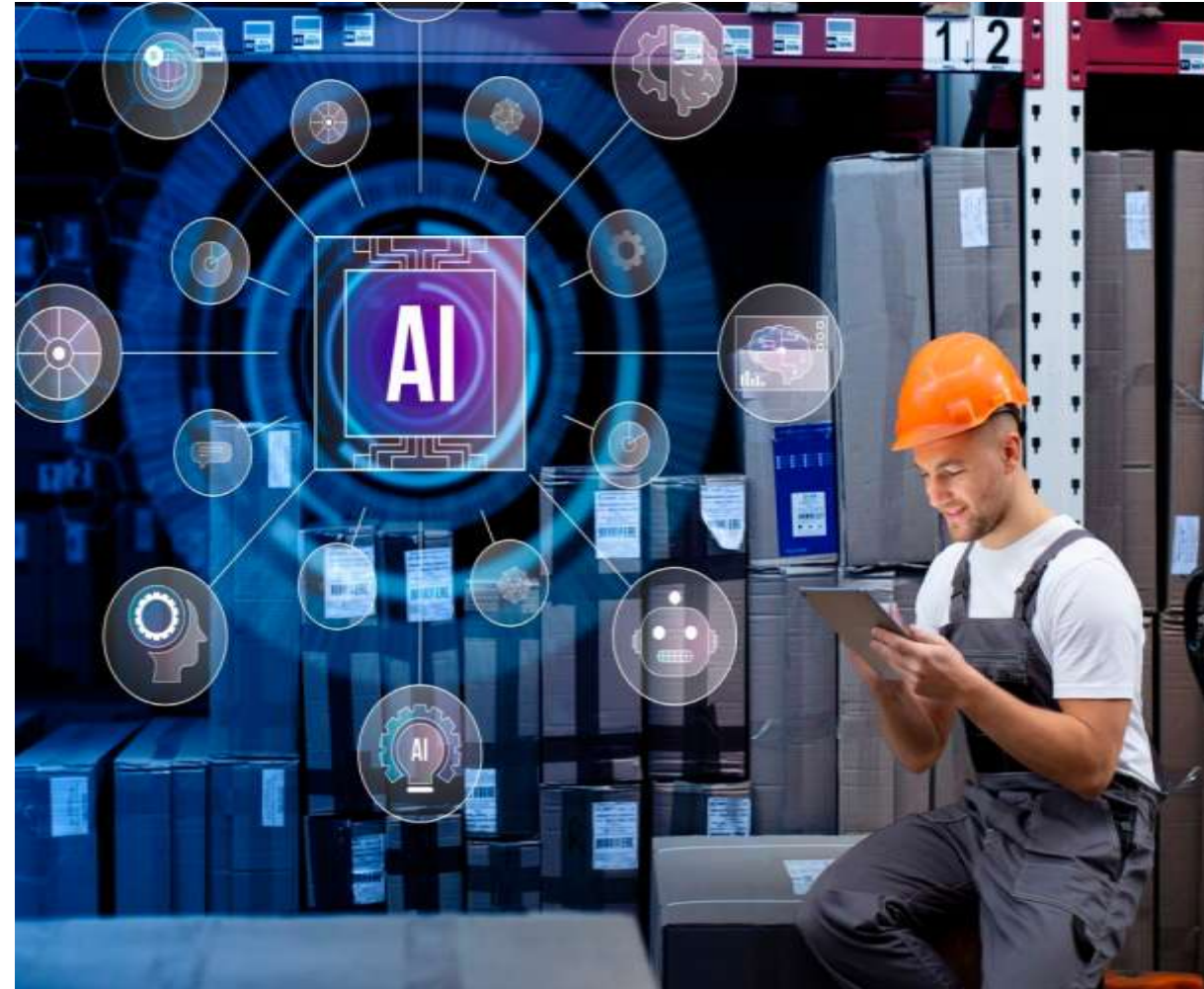
## People & Process Foundation:

- **Clear Use Case:** Start small with a high-ROI problem (e.g., "Automate invoice data entry") rather than trying to "boil the ocean."
- **Process Re-engineering:** You must audit and optimize your *current* manual processes *before* automating them. Don't automate a bad process.
- **Stakeholder Buy-In:** IT, operations, customs officers, and warehouse staff must be involved from day one.
- **Upskilling the Workforce:** The goal isn't to replace people; it's to **augment** them. Staff must be trained to manage, interpret, and act on AI-driven insights.



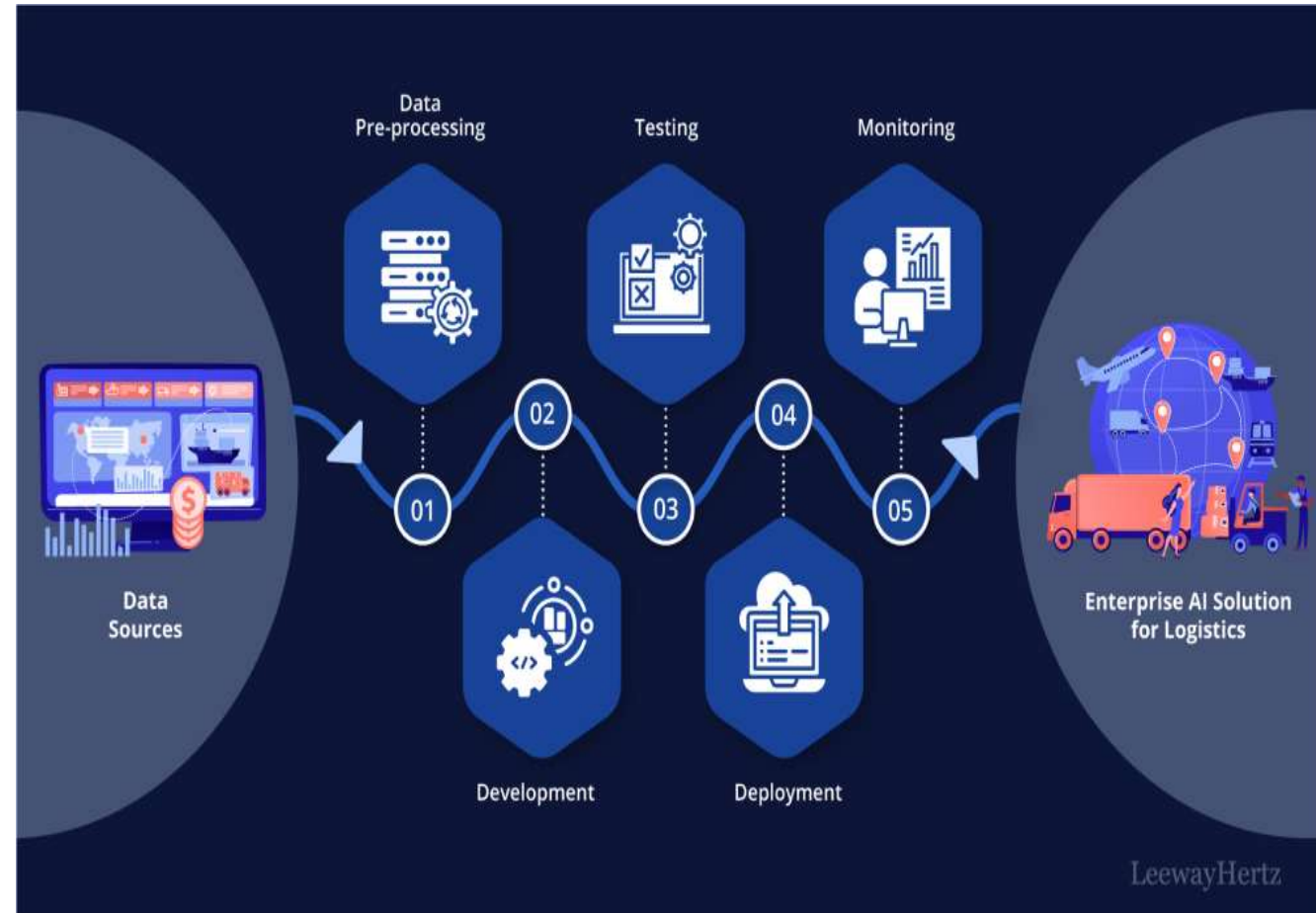
# A Strategic Guide to Implementing AI in Transportation and Mobility: Talent and Skills Development

- The successful implementation of **AI** **requires** a **skilled workforce**.
- This involves not only data scientists and AI specialists but also **transportation planners, engineers, and policymakers** who understand the potential and limitations of AI.
- **Investing in training and upskilling** programs is crucial for building the necessary human capital.



# A Strategic Guide to Implementing AI in Transportation and Mobility: Technology and Tools

- Choosing the **right AI technologies and tools is critical**.
- This includes machine learning algorithms for **predictive analysis**, **computer vision for monitoring traffic and infrastructure**, **natural language processing** for interacting with travelers, and optimization algorithms for routing and scheduling.
- The strategy should outline a clear roadmap for technology adoption and integration with existing transportation systems.



# A Strategic Guide to Implementing AI in Transportation and Mobility: Collaboration and Partnerships

- The **transportation ecosystem is complex, involving numerous public and private stakeholders.**
- A successful AI strategy fosters collaboration **between government agencies, technology companies, academic institutions, and the public** to ensure a holistic and integrated approach.



# A Strategic Guide to Implementing AI in Transportation and Mobility: Governance and Ethical Considerations

- A framework for **ethical AI is essential to build public trust and mitigate potential risks**.
- This includes **addressing issues of algorithmic bias, ensuring transparency and explainability** of AI-driven decisions, and establishing clear lines of accountability.

## Ethical Considerations in AI Deployment for Logistics

Transparency and  
Accountability

Bias and Fairness

Privacy and Data  
Protection

Safety and Reliability

Sustainability

Human-AI Collaboration

14

25

36

FosterCapital

# AI for transport solutions



# Key Application Areas for AI in Transport and Mobility: Documentation, OCR, and Administration

- **Optical Character Recognition (OCR):** This is the base technology that reads text from a scanned document.
- **Intelligent Document Processing (IDP):** This is the next level, where AI understands the context of the data captured by OCR. Instead of just reading "123 Main St," it knows this is the "Consignee Address."
- **Automated Document Processing:** AI, particularly using Natural Language Processing (NLP), can read and understand trade documents like invoices and bills of lading. It can automatically extract key information and check for errors or inconsistencies, drastically speeding up the documentation process.
- **AI-Powered Risk Assessment:** Instead of randomly inspecting shipments, customs agencies can use AI to analyze vast amounts of data and identify high-risk cargo. The system flags shipments that fit certain risk profiles, allowing officers to focus their attention where it's needed most. This not only improves security but also means that low-risk shipments can pass through customs much faster.
- **Tariff Classification:** Classifying goods for tariffs can be complex. AI tools can analyze product descriptions and suggest the correct tariff code, reducing errors and ensuring that the right amount of duty is paid.

METRIC	MANUAL PROCESSING	AI-POWERED SYSTEMS
Average Clearance Time	3-7 days	4-8 hours
Document Audit Accuracy	70-85%	95-98%
Data Entry Time	40-60 hours (per 100 shipments)	2-4 hours
Error Rate	15-30%	2-5%

# Key Application Areas for AI in Transport and Mobility: Streamlining Customs Operations

Historically, customs has been a "black box" of paper, rubber stamps, and manual checks. This creates:

- **Delays:** Shipments waiting for days.
- **Errors:** Manual data entry leads to fines.
- **Inefficient Risk:** Officers can only physically inspect a tiny fraction of cargo (e.g., <2%).
- **High Costs:** Labor-intensive processes.

AI is eliminating manual data entry and paperwork bottlenecks, which are historically a major source of delays and errors in logistics

## Applications:

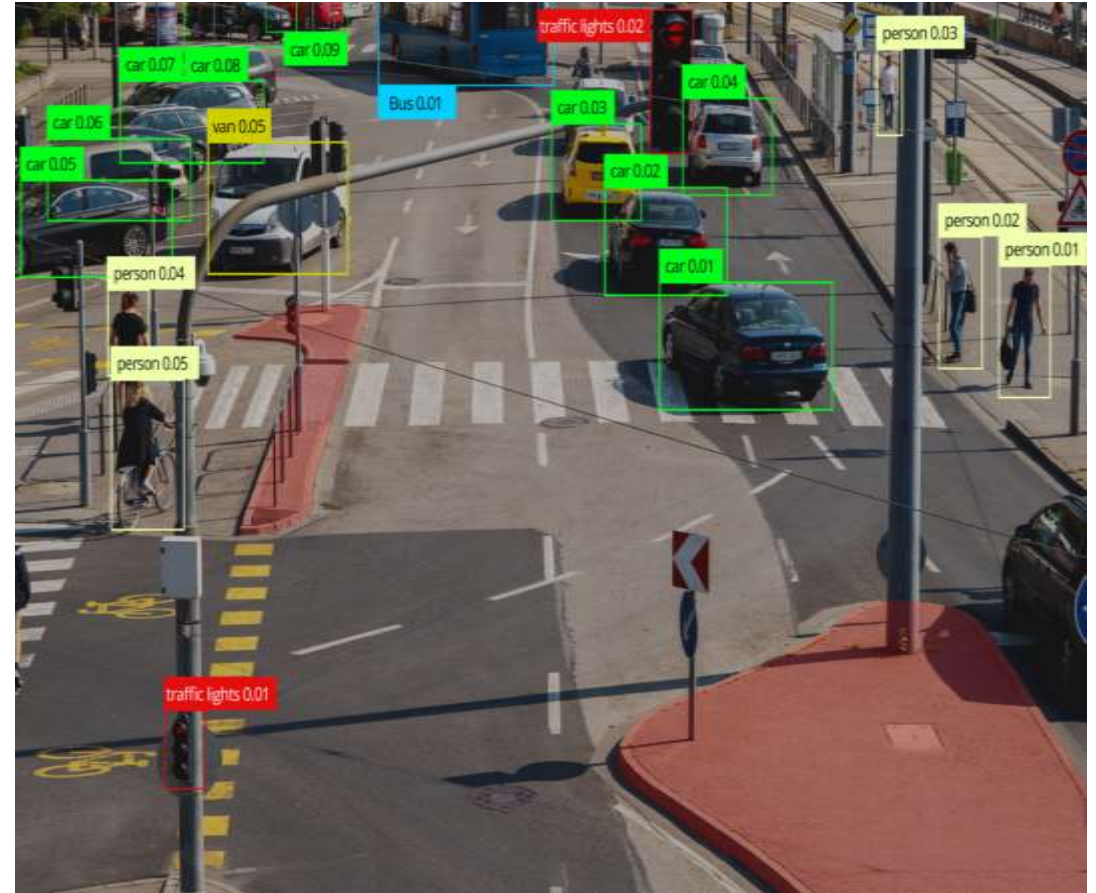
- **Freight & Logistics:** Instantly processing bills of lading, proof of delivery (PoD), and invoices.
- **Customs:** Automating the extraction of data from customs declarations, commercial invoices, and certificates of origin.





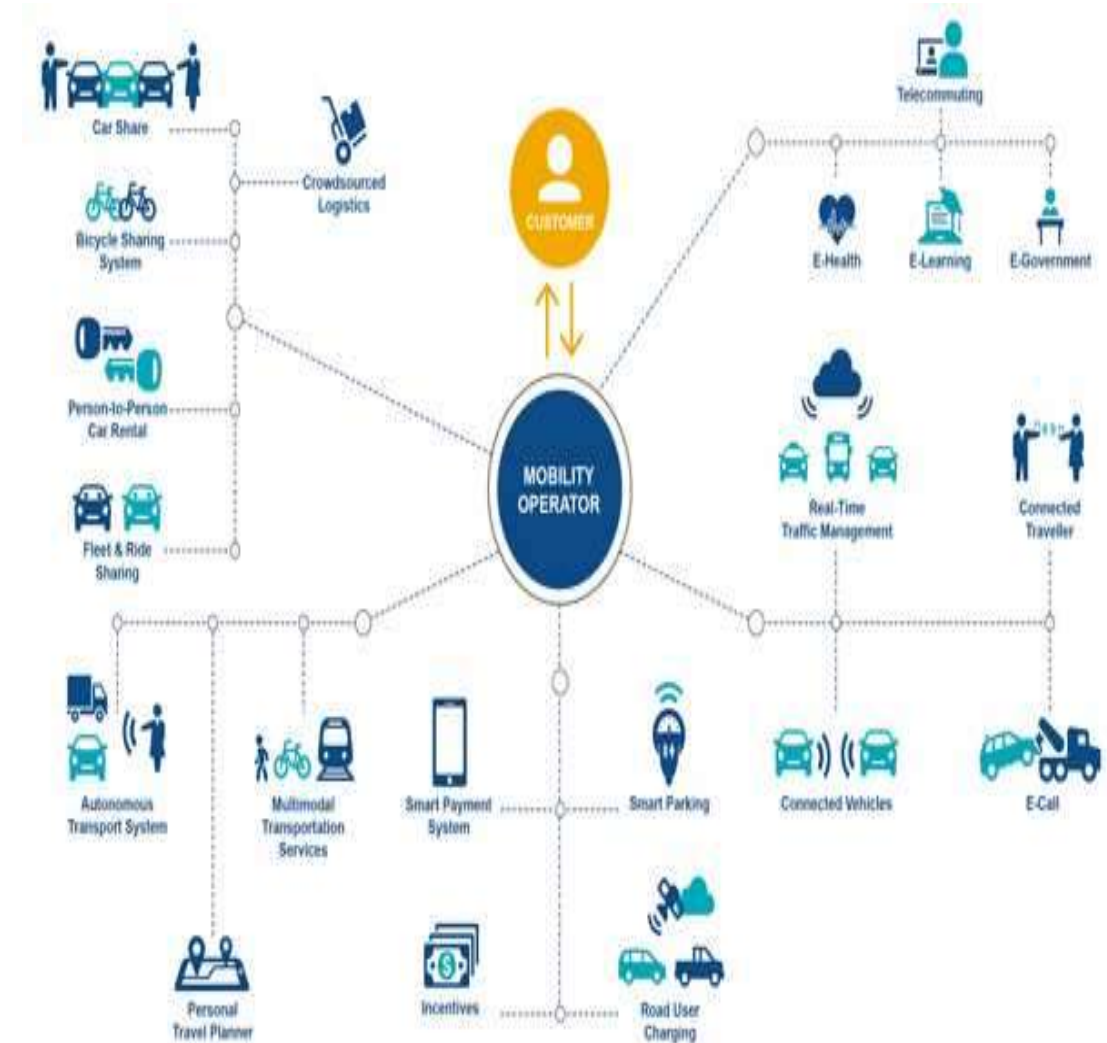
# Key Application Areas for AI in Transport and Mobility: Intelligent Traffic Management

- **Predictive Traffic Flow:** AI algorithms can analyze real-time and historical traffic data to predict congestion hotspots before they occur, allowing for proactive traffic management.
- **Adaptive Traffic Signals:** AI-powered traffic signals can dynamically adjust their timing based on real-time traffic conditions, optimizing traffic flow and reducing delays.
- **Incident Detection and Management:** Computer vision and sensor data analysis can automatically detect accidents, stalled vehicles, and other incidents, enabling faster emergency response.



# Key Application Areas for AI in Transport and Mobility: Enhanced Public Transportation

- **Demand-Responsive Services:** AI can analyze passenger demand in real-time to optimize routes and schedules for buses and other public transport, providing more flexible and convenient services.
- **Predictive Maintenance:** By analyzing data from sensors on vehicles and infrastructure, AI can predict maintenance needs, reducing downtime and improving the reliability of public transport.
- **Personalized Journey Planning:** AI-powered mobile applications can provide personalized travel recommendations, combining different modes of transport to offer the most efficient and convenient routes.



# Key Application Areas for AI in Transport and Mobility: Aviation's Cautious Integration

- **AI algorithms are crucial for optimizing flight paths:** for fuel efficiency, managing complex gate assignments at major airports, and, most importantly, in predictive maintenance.
- **AI to predict when an engine component might fail:** allowing them to schedule repairs proactively, which dramatically increases safety and reduces costly downtime.
- **In-flight AI is still largely in an advisory role:** (e.g., pilot assistance systems), with full autonomy being a distant prospect due to extreme safety and regulatory scrutiny.



# Real cases of AI in transport



# Case 1: Predictive Risk Assessment in Customs

**Organization:** Dutch Customs (Douane Nederland)

**The Problem:** With millions of containers passing through the Port of Rotterdam, the largest in Europe, manually selecting high-risk containers for inspection is impossible. Traditional random checks or simple rule-based systems are inefficient, missing illicit goods while delaying legitimate trade.

**The AI Solution:** The Dutch Customs authority has deployed a sophisticated AI-powered system that uses machine learning to perform real-time risk analysis for each shipment:

- The shipper's and receiver's history
- The declared contents and their typical shipping routes
- Discrepancies in paperwork
- Vessel tracking data from IoT sensors
- Global trade patterns and intelligence reports

The algorithm assigns a dynamic risk score to each container. Instead of telling officers *what* to check, it tells them *why* a shipment is suspicious (e.g., "This container's weight is anomalous for its declared contents," or "The shipping route deviates from the norm for this supplier").

**Real-World Outcome:** This AI-driven approach has led to a **300% increase in the "hit rate"** for contraband, including narcotics and counterfeit goods. Crucially, it has also significantly reduced the inspection rate for legitimate cargo, speeding up clearance times for the vast majority of businesses and making the port more efficient.



## Case 2: AI-Powered Smart Document Processing Across Europe

**Organizations:** 14 European markets including UK, Netherlands, and Italy

**Problem:** Customs clearance remains one of the most paper-intensive industries, further challenged by strict regulations and complex compliance requirements. Even a basic declaration involves handling at least 4–5 multipage documents, while more complex cases can require over 10, including import/export licenses, certificates of origin, and various regulatory compliance documents.

**Solution:** The *Customs SmartAssist* solution uses artificial intelligence (AI), machine learning, and Optical Character Recognition (OCR) to process documents accurately in various formats and qualities – including handwritten information or low-resolution copies and mobile phone photos. The tool also takes language complexity away – it automatically extracts all relevant customs-specific information and instantaneously translates it. The system is designed to be self-learning: if any data fields are unclear, they are flagged for CSG experts to review before submission. Once corrections are made, the AI learns from the feedback and continuously improves its ability to interpret and process similar documents accurately in the future. This minimises errors and significantly reduces processing times.

**The Impact:** The "Human-in-the-loop" model ensures accuracy while drastically reducing processing time:

- Significantly reduced time spent on manual documentation tasks – more focus on expert knowledge and strategic decision-making
- Up to 50% increase in efficiency in the preparation of digital customs declarations
- Europe-wide rollout across 14 markets, with a target of 1 million declarations processed using AI technology in 2025



# Case 3: AI-Powered Computer Vision for Cargo and Vehicle Scanning at Customs

**Organization:** Lithuanian Customs Innovation

**The Problem:** Manually reviewing X-ray scans of thousands of vehicles and cargo containers passing through border checkpoints every day is a monumental task. Human operators can become fatigued, leading to errors and making it difficult to spot well-concealed contraband.

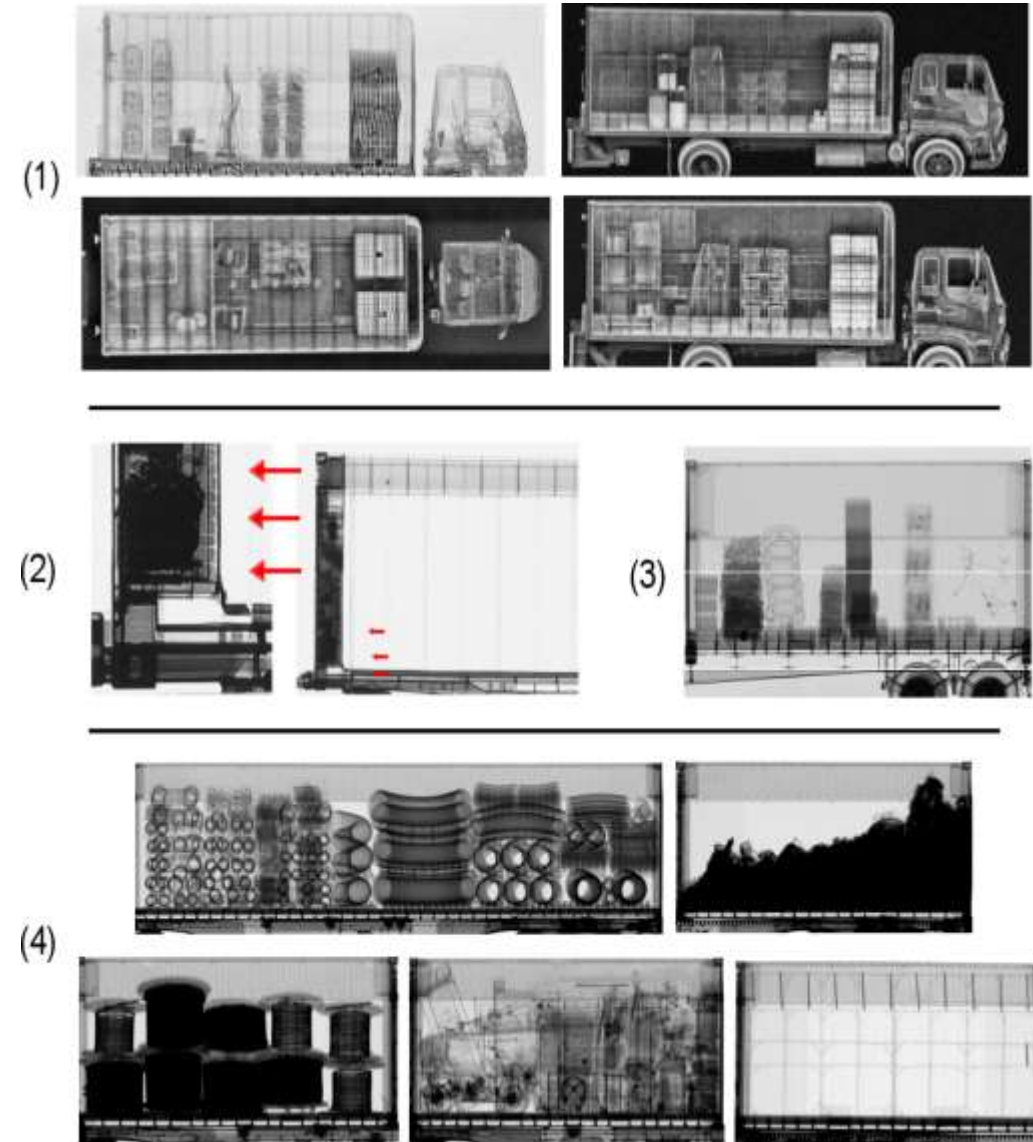
**Focus:** Non-Intrusive Inspection (NII) technologies.

**Business Value:** The system highlights anomalies and potential contraband (like smuggled cigarettes) instantly. This reduces the need for time-consuming physical inspections and accelerates the flow of legitimate cargo.

**The AI Solution:** CBP has deployed AI-enhanced X-ray scanning systems at several key ports of entry. As a truck or container passes through a scanner, a high-resolution image is generated. An AI computer vision algorithm then analyzes this image in seconds. The AI is trained on hundreds of thousands of past scans to recognize anomalies:

- Unusual densities or shapes hidden within legitimate cargo.
- Modifications to the structure of the vehicle itself (e.g., hidden compartments).
- Objects that don't match the cargo manifest. The system flags suspicious scans and highlights the specific area of concern for a human officer to review, allowing them to focus their expertise on the highest-risk items.

**Real-World Outcome:** This technology has been credited with numerous high-profile seizures of narcotics, weapons, and other illicit goods. It significantly speeds up the scanning process, reducing wait times at borders while simultaneously improving security.



# Case 4: Citizen-Centric Solution at German Customs "eZOLL App"

**Organization:** German Customs

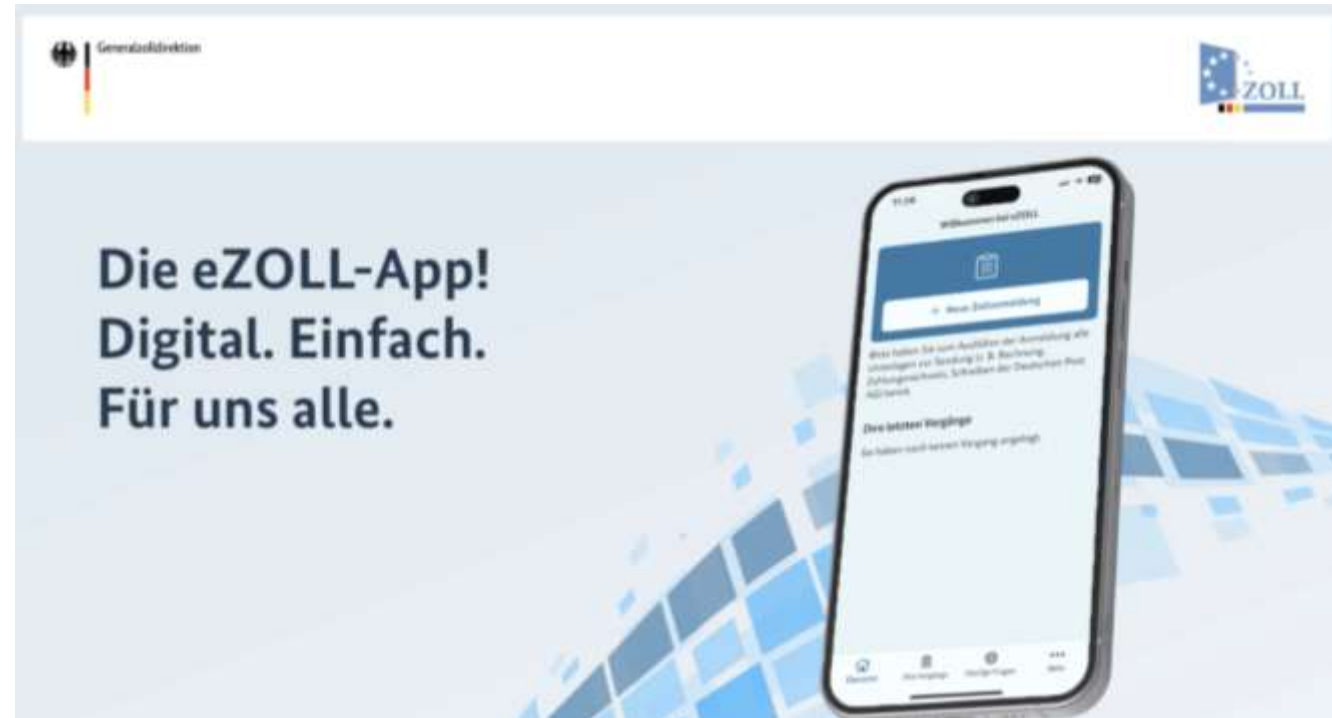
**The Need:** Managing the flood of small e-commerce parcels from outside the EU.

**AI Solution:** An AI-powered classification tool embedded in a consumer-facing app.

**Solution:** The eZOLL app is a user-friendly app for individuals and businesses who need to submit customs declarations for postal and courier shipments up to €150. Individuals can also use the eZOLL app to declare gift shipments up to a value of €45. This innovative app allows customs-relevant data to be automatically transferred to the customs declaration by taking a photo or importing documents such as a standard commercial invoice. The product description then serves as the basis for AI-assisted determination of the appropriate commodity code from the customs tariff.

For quick and easy payment of import duties, the app integrates the modern electronic payment option ePayBL (the federal and state ePayment platform). This platform integrates payment methods such as credit card payments.

**Impact:** Helps citizens correctly classify goods and calculate duties. It simplifies complex regulations for the average user, ensuring higher compliance rates and faster duty collection.



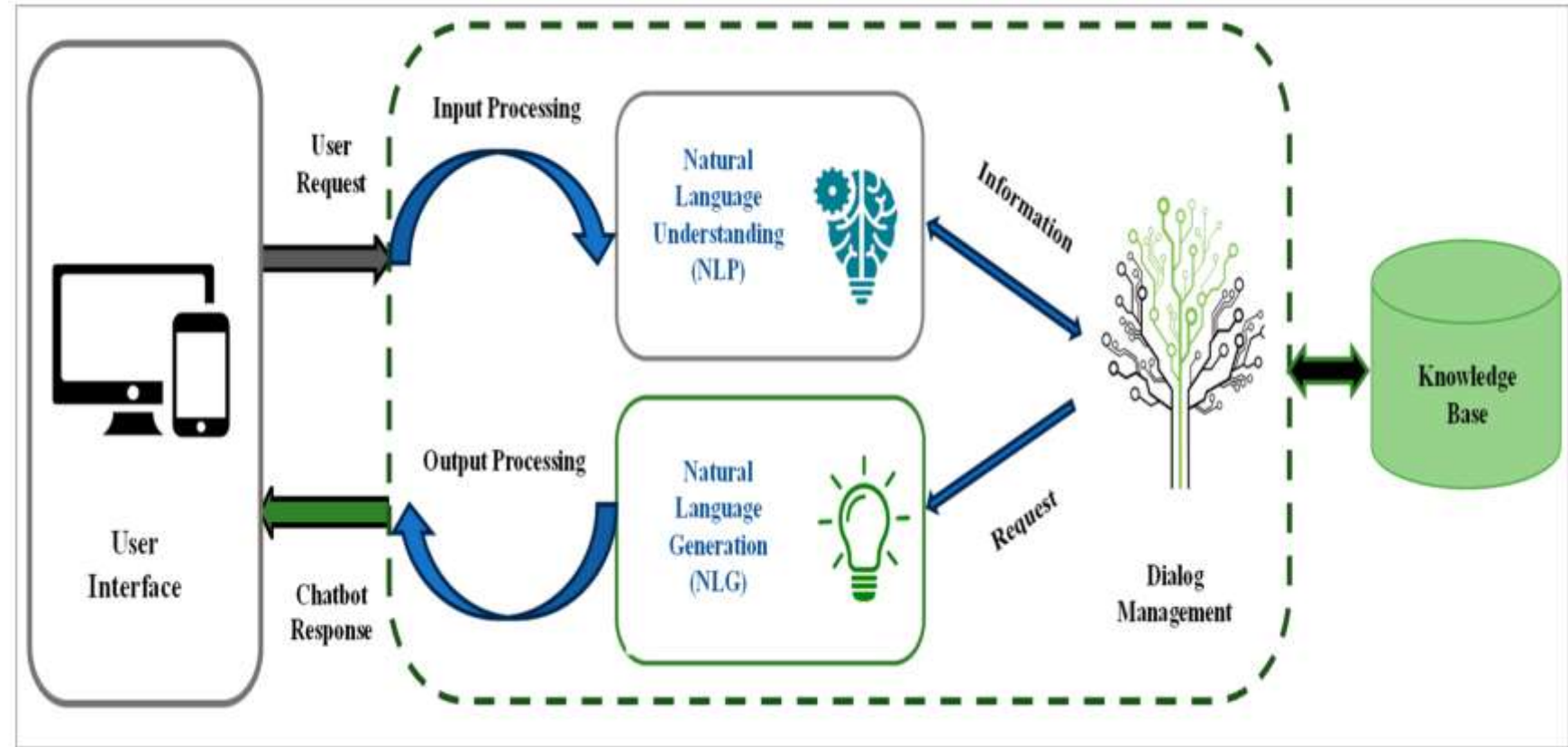
## Case 5: Multilingual Trade Support for 24/7 Regulatory Guidance

**Organization:** Dutch Customs and Estonian Tax and Customs Board

**Problem:** Traders struggle with complex regulations available in 24 different EU languages.

**AI Solution:** GenAI-powered chatbots trained on official statutes and tariff notes.

**Benefit:** Provides consistent, legally grounded answers in real-time, regardless of the user's language. Reduces the burden on human support staff and enhances trade predictability.

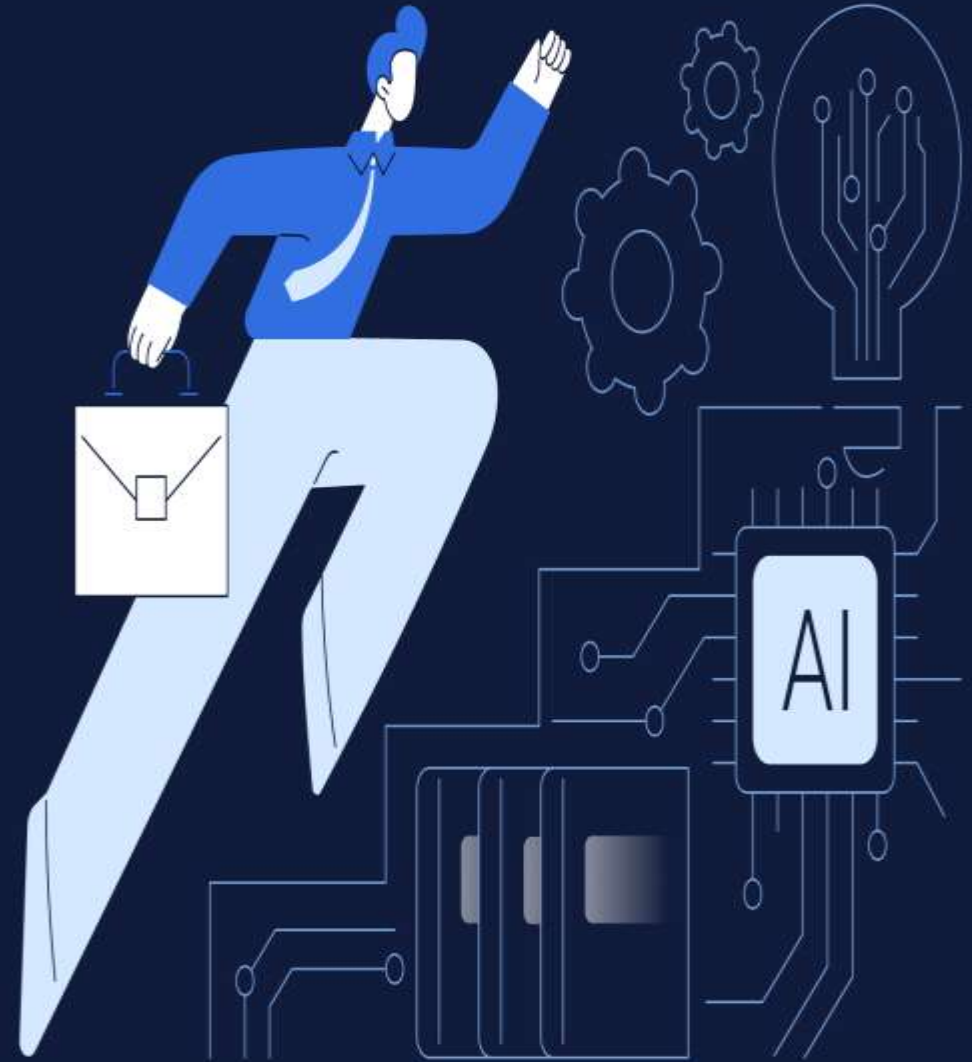




# Strategic Impact Summary

BUSINESS CASE	CORE TECHNOLOGY	PRIMARY BENEFIT
Automated Declarations	OCR & Machine Learning	50% Efficiency Gain
Risk Management	Predictive Analytics	Reduced False Positives
Intelligent X-Ray	Computer Vision (CNN)	Faster Clearance
E-Commerce Apps	Classification AI	Citizen Compliance
Virtual Assistants	NLP & GenAI	24/7 Trade Support

## Steps of AI Implementation in transport



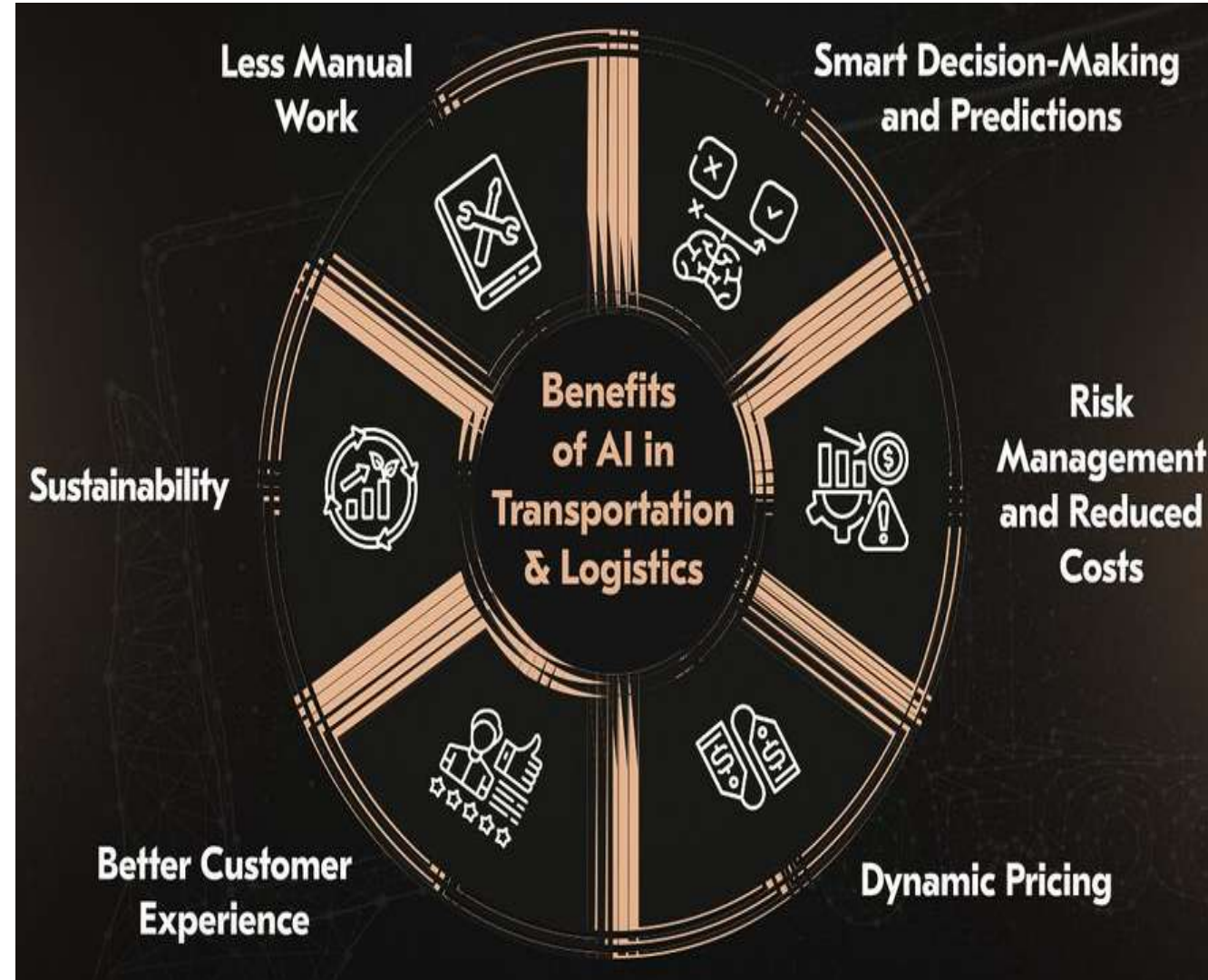
# A Phased Approach to Implementation

1. **Pilot Projects and Proofs-of-Concept:** Start with small-scale pilot projects to test the feasibility and impact of specific AI applications in a controlled environment.
2. **Iterative Development and Learning:** Continuously evaluate the performance of AI systems and use the insights gained to refine and improve them.
3. **Scalable Deployment:** Once an application has proven its value, develop a plan for scaling it up across the wider transportation network.
4. **Continuous Monitoring and Adaptation:** The transportation landscape is constantly evolving. The AI strategy should be regularly reviewed and updated to adapt to new technologies, changing travel patterns, and evolving policy priorities.



# The Real-World Impact of AI: The "Good" and Quantifiable Wins

- **Efficiency and Cost Savings:** The most consistent win. A 2024 study by the International Transport Forum found that AI-driven logistics can reduce fuel consumption in trucking fleets by 10-15%. For a large haulage company, this translates to tens of millions of euros annually.
- **Safety Enhancements:** In road transport, AI is the brain behind Advanced Driver-Assistance Systems (ADAS). Features like automatic emergency braking and lane-keeping assist, now standard in most new vehicles, are directly responsible for a measurable reduction in collisions. The EU General Safety Regulation, which mandated many of these features, has seen a notable decline in specific accident types since its full implementation.
- **Improved Customer Experience:** AI-powered journey planners provide users with real-time, multi-modal travel options, integrating ride-sharing, public transit, and micro-mobility (scooters, bikes) into a single, seamless experience.



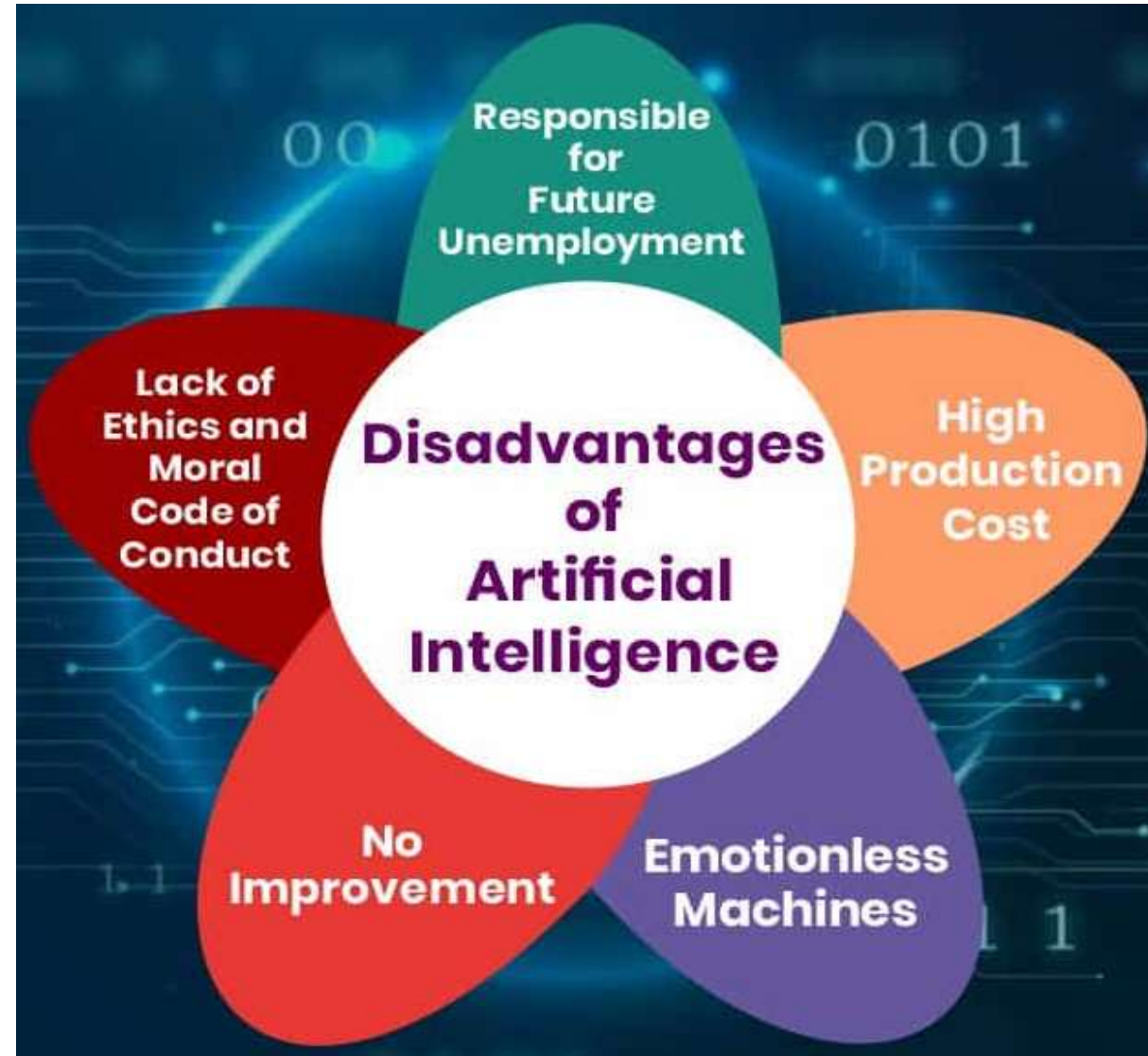
# The Real-World Impact of AI: The Friction of Implementation

- **The Data Quagmire:** AI is only as good as its data. Many transport operators, especially older, state-owned railways or municipal bus companies, are struggling with "data silos"—information stored in incompatible, legacy systems. The cost and complexity of creating a unified data infrastructure are massive barriers.
- **The Skills Gap:** There is a critical shortage of professionals who understand both AI and the operational complexities of transport. You can't just hire a data scientist and expect them to understand the intricacies of railway signaling or maritime law. This talent shortage is a major bottleneck to wider adoption.
- **High Initial Investment vs. Uncertain ROI:** Implementing a sophisticated AI system is expensive. For many smaller logistics companies or public authorities, the upfront cost for sensors, computing infrastructure, and expert staff is prohibitive, especially when the return on investment isn't guaranteed and can take years to materialize.



# The Real-World Impact: Unintended Consequences

- **Job Displacement:** The efficiency of AI in logistics and administrative roles has a direct human cost. Automated document processing in customs and freight forwarding is eliminating jobs. While new roles are being created (e.g., AI system supervisors), they require different skills, leading to workforce displacement that governments are struggling to manage.
- **Algorithmic Bias:** AI systems learn from historical data, which can perpetuate existing biases. For example, a route optimization AI might consistently direct heavy truck traffic through low-income neighborhoods because those routes are statistically "faster," leading to concentrated pollution and noise in vulnerable communities. This is a real and growing concern in urban planning.
- **Cybersecurity Threats:** Centralized, AI-driven transport networks create single points of failure that are attractive targets for cyberattacks. A successful attack on a city's traffic management system or a major port's logistics platform could cause chaos and economic disruption on an unprecedented scale.



# CONCLUSIONS



# Realistic Benefits: Focus On Customs Operation

## 1. Automated Document Processing & Classification:

AI (using NLP) reads PDF invoices, packing lists, and bills of lading.

- **Benefit:** Auto-populates customs declarations, cutting manual data entry by **90%+** and drastically reducing costly human errors (e.g., typos, incorrect values).
- **Benefit:** AI suggests the correct **Harmonized System (HS) code** for products, ensuring tariff compliance and reducing fines.

## 2. Intelligent Risk Assessment:

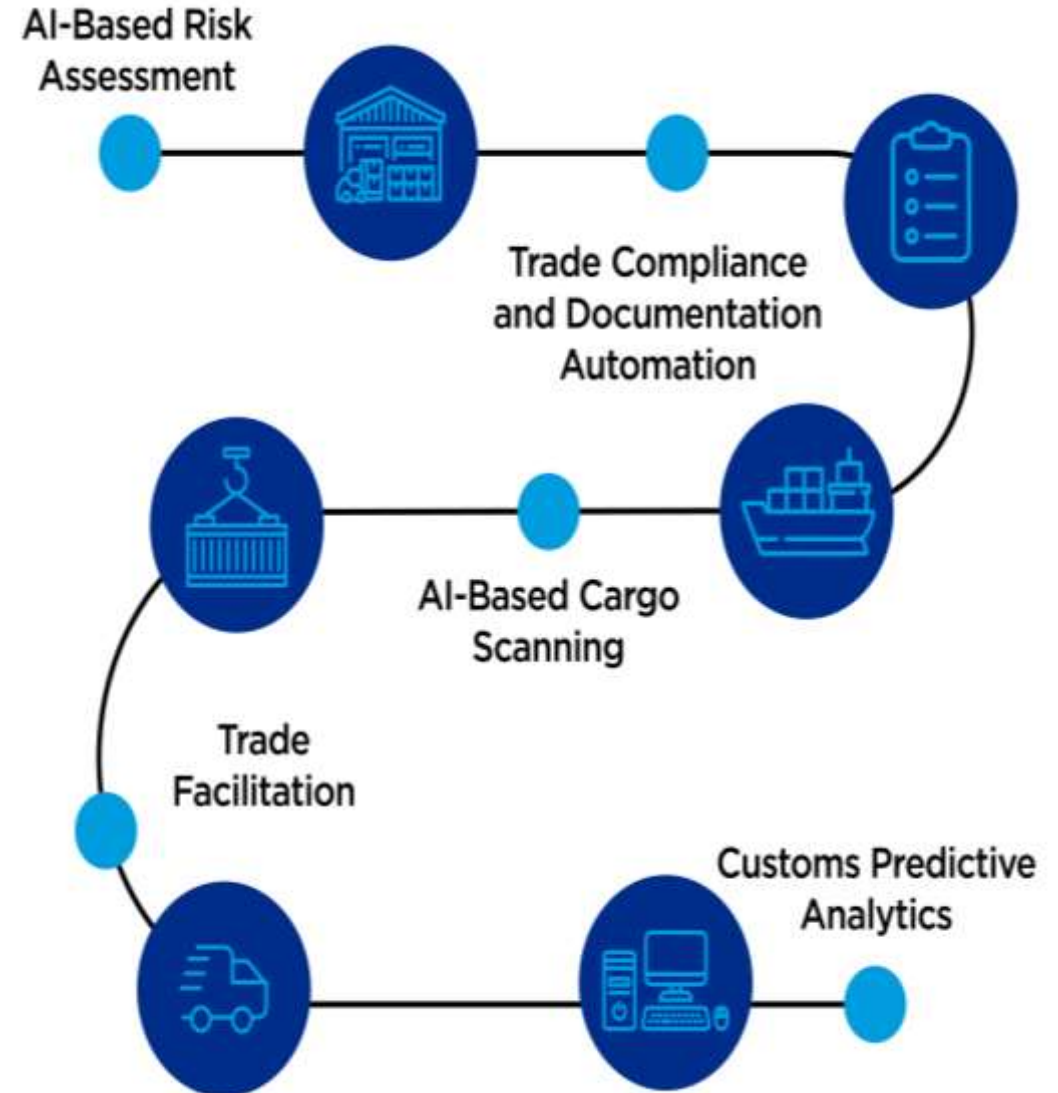
**Machine Learning** analyzes 100% of declarations in real-time. It flags high-risk shipments by learning from patterns (e.g., new shipper, unusual route, undervalued goods).

- **Benefit:** Shifts officers from *randomly* inspecting 2% of cargo to *intelligently* inspecting the *riskiest* 2%. This catches more contraband while expediting legitimate trade.

## 3. Automated Image Analysis:

**Computer Vision** analyzes X-ray and scanner images faster and more accurately than the human eye.

- **Benefit:** Instantly detects anomalies (e.g., hidden compartments, contraband, mis-declared goods), alerting officers for a physical check.



# Realistic Benefits: Focus On Transport & Logistics

## 1. Dynamic Route & Fleet Optimization:

AI analyzes real-time traffic, weather, fuel prices, and delivery windows.

- **Benefit:** Continuously finds the *true* most efficient route, **reducing fuel costs by 10-15%** and improving on-time delivery performance.

## 2. Predictive Maintenance

AI monitors IoT sensor data from engines, tires, and reefer units.

- **Benefit:** Predicts component failures *before* they happen. This cuts unplanned downtime, reduces repair costs, and prevents cargo spoilage.

## 3. Intelligent Load & Freight Matching

AI matches available trucks with open loads, optimizing for capacity, route, and carrier performance.

- **Benefit: Reduces "empty miles"** (trucks driving without cargo), increases asset utilization, and provides more accurate rate negotiations.



# Realistic Benefits: Focus On Warehouses

## 1. AI-Driven Demand Forecasting:

**Machine Learning** analyzes historical sales, seasonality, market trends, and even weather.

- **Benefit:** Creates highly accurate demand forecasts. This **prevents both stockouts (lost sales) and overstocking**(tied-up capital, high storage costs).

## 2. Optimized Inventory & Slotting:

AI determines the *perfect* place to store every item (slotting) based on pick frequency.

- **Benefit:** Places high-demand items closer to packing stations, **reducing picker travel time by up to 40%** and increasing order fulfillment speed.

## 3. Autonomous Mobile Robots (AMRs):

AI-powered robots navigate the warehouse independently (goods-to-person).

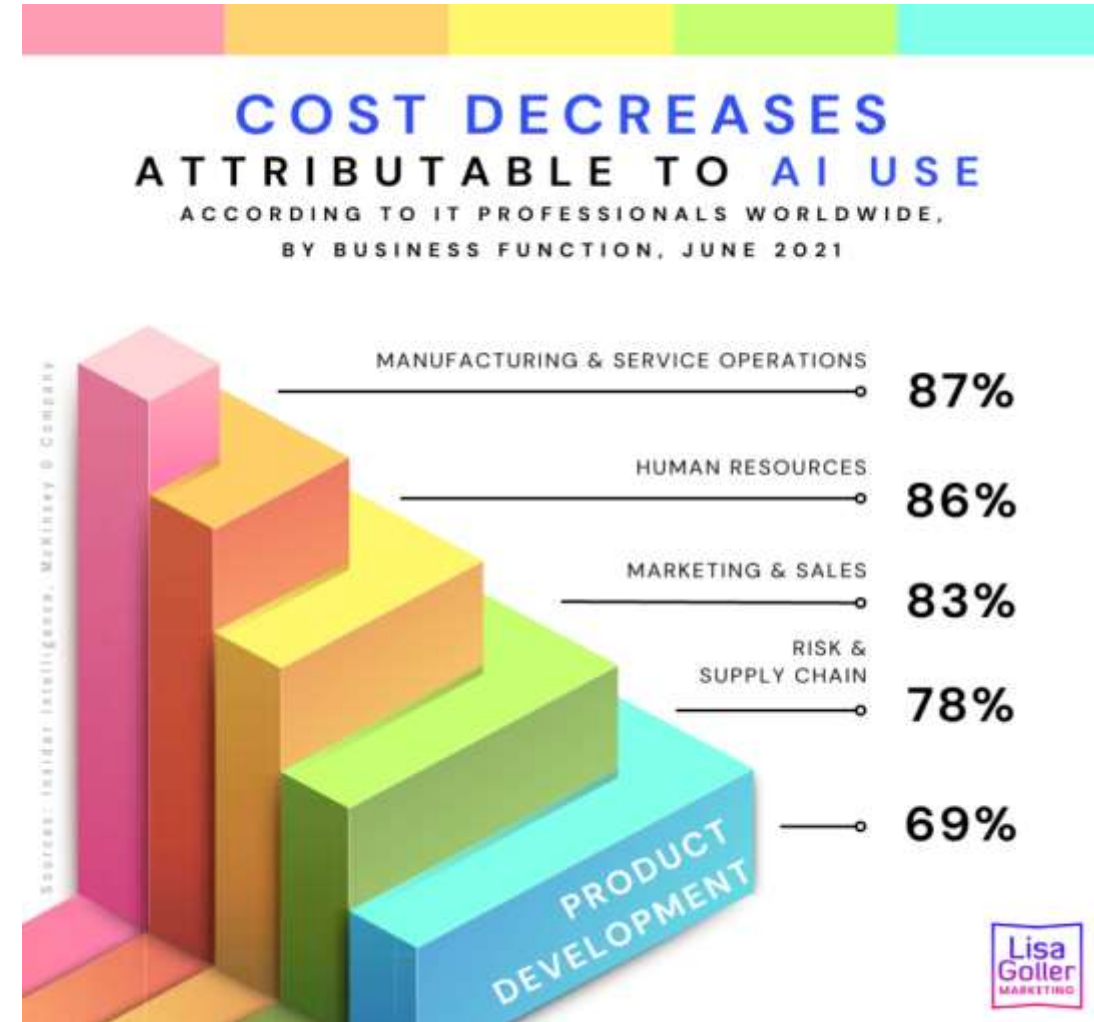
- **Benefit:** Automates the most time-consuming task—walking. This **triples picking productivity**, reduces worker fatigue, and enables 24/7 operations.



# Realistic Benefits: Efficiency & Cost

This is where AI delivers immediate, measurable ROI:

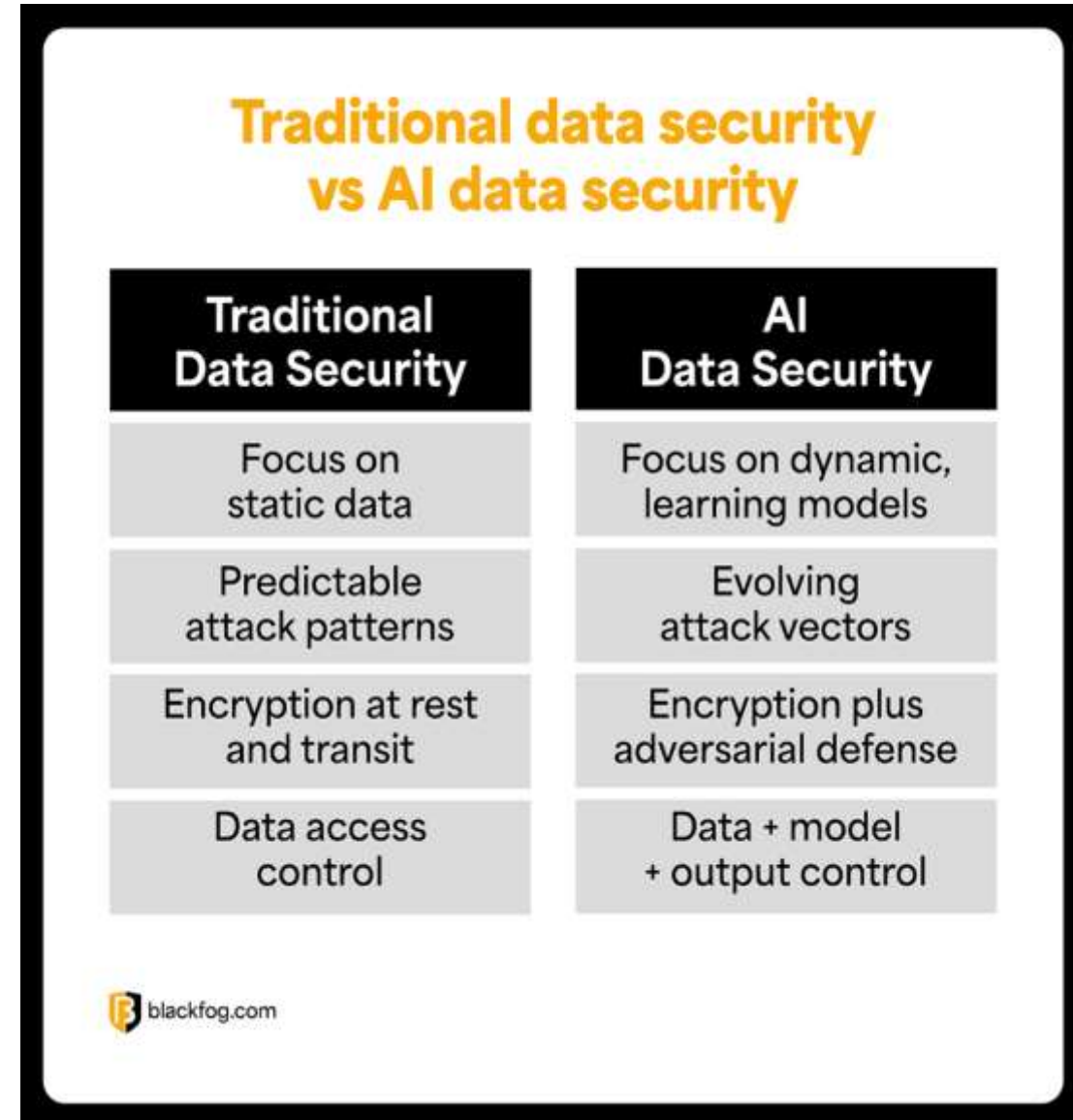
- **Drastic Time Reduction:** Clearance times drop from **days to hours** (or even minutes) for low-risk, compliant traders.
- **Automated Document Processing:** AI (using NLP) can cut manual data entry by **80-90%**, virtually eliminating typos and human error.
- **Automated HS Classification:** AI systems can analyze a product's description and suggest the correct tariff code with high accuracy. This reduces compliance errors, disputes, and fines.
- **24/7 Operations:** AI-powered chatbots can answer 80% of routine trader queries (e.g., "What is the status of my shipment?"), freeing up officers for complex issues.



# Realistic Benefits: Security & Compliance

This is the "smarter" part of the equation: **facilitating legitimate trade while stopping illicit goods:**

- **Smarter Risk Management:**
  - **Before AI:** Officers inspect a *random* 2-5% of cargo.
  - **With AI:** AI analyzes *100%* of data to identify the *riskiest* 2-5% of cargo. This means officers stop wasting time on compliant shipments and focus their expertise where it matters.
- **Enhanced Anomaly Detection:**
  - **Document Fraud:** AI cross-references invoices, manifests, and declarations to find inconsistencies (e.g., weight on manifest doesn't match weight on invoice).
  - **Physical Contraband:** Computer Vision (CV) models are trained to spot anomalies in cargo X-rays far faster and more accurately than the human eye.
- **Proactive Compliance:** AI can monitor trade patterns in real-time to flag valuation fraud (undervaluing goods to pay less duty) or smuggling routes as they emerge.



# Realistic Benefits: Security & Compliance

This is the "smarter" part of the equation: **facilitating legitimate trade while stopping illicit goods:**

- **Smarter Risk Management:**
  - **Before AI:** Officers inspect a *random* 2-5% of cargo.
  - **With AI:** AI analyzes *100%* of data to identify the *riskiest* 2-5% of cargo. This means officers stop wasting time on compliant shipments and focus their expertise where it matters.
- **Enhanced Anomaly Detection:**
  - **Document Fraud:** AI cross-references invoices, manifests, and declarations to find inconsistencies (e.g., weight on manifest doesn't match weight on invoice).
  - **Physical Contraband:** Computer Vision (CV) models are trained to spot anomalies in cargo X-rays far faster and more accurately than the human eye.
- **Proactive Compliance:** AI can monitor trade patterns in real-time to flag valuation fraud (undervaluing goods to pay less duty) or smuggling routes as they emerge.



# The Road Ahead: Trends for 2026 and Beyond

The future of AI in transport is a push-pull between technological possibility and practical reality.

- 1. Federated Learning:** To overcome data privacy and silo issues, we'll see more "federated learning," where AI models are trained on localized data (e.g., within a single company's servers) without the raw data ever leaving its source. This is crucial for collaboration between competing logistics firms or different public transport authorities.
- 2. AI for Sustainability:** The next major push is using AI to drive green initiatives. This includes optimizing electric vehicle charging networks, creating ultra-efficient flight plans to minimize contrails, and managing supply chains for a circular economy.
- 3. Regulation is Coming:** Governments are catching up. Expect more stringent regulations around AI's use in critical infrastructure, focusing on transparency (how the AI makes decisions), fairness (avoiding bias), and security. This will slow down innovation in some areas but is essential for public trust and safety.



# The Future: The "Cognitive" Customs Agency

This isn't science fiction; it's the next logical step:

- **From Automation to Prediction:** We're moving from systems that *react* to declarations to systems that *predict* risk **before a ship even leaves its origin port.**
- **AI as a Partner:** The future customs officer is an "AI-augmented" expert. Their dashboard shows them: "This shipment is 99% likely compliant. This *other* shipment has a 75% risk score for mis-declared goods. **Inspect this one.**"
- **A "Single Window" Ecosystem:** AI will be the engine that finally connects all parties (shipper, port, customs, tax authority) into one seamless, digital, and intelligent supply chain.



# Outcomes

- By embracing a strategic approach to AI, the transportation and mobility sector can unlock a future of movement that is not only technologically advanced but also safer, more efficient, and more sustainable for all.
- In summary, AI is successfully optimizing complex transport networks behind the scenes, delivering clear economic and efficiency benefits.
- However, its expansion is hampered by practical data, cost, and skills issues.
- The most critical challenge ahead is not technological but human: managing the societal impacts of automation and ensuring that the systems we build are fair, secure, and truly serve the public good.



*The  
revolution  
is here ai*



**THANK YOU!**

**Aivaras Vilkelis**

AI EXPERT OF MC MOBILITY CONSULTANTS

[aivaras.vilkelis@vilnius-mc.com](mailto:aivaras.vilkelis@vilnius-mc.com)

Tel: +37061034001



Implemented by

