

NEXT-GEN DATA PLATFORM FOR HEALTHCARE & AVIATION SECURITY

- IRM Inc.
- Presented by: Samuel Choi



ORGANIZATION DESCRIPTION

Samuel Choi PhD

CEO, IRM

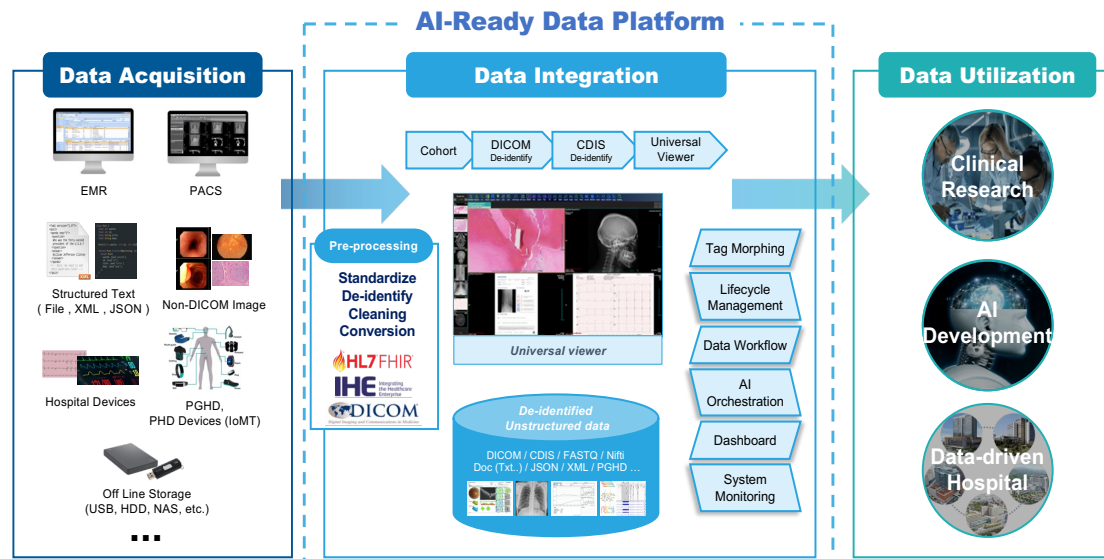
Founder & CTO, ETERNE (Meerecompany)

Co-President, RAY

Co-Founder, INFINITT HEALTHCARE



Pioneering Health Data Enablement



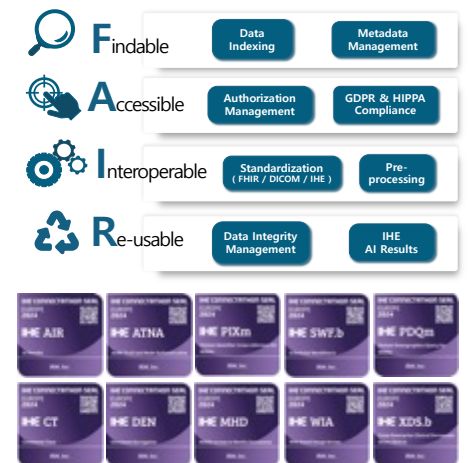
Core Competences - *Data Integration/Exchange*

Medical Big Data Interoperability

- Seamless integration with PACS, EMR and HIS with **global standards (DICOM, IHE, HL7 FHIR)**
- Automated **metadata tagging & pre-processing**

AI-Ready Data Processing

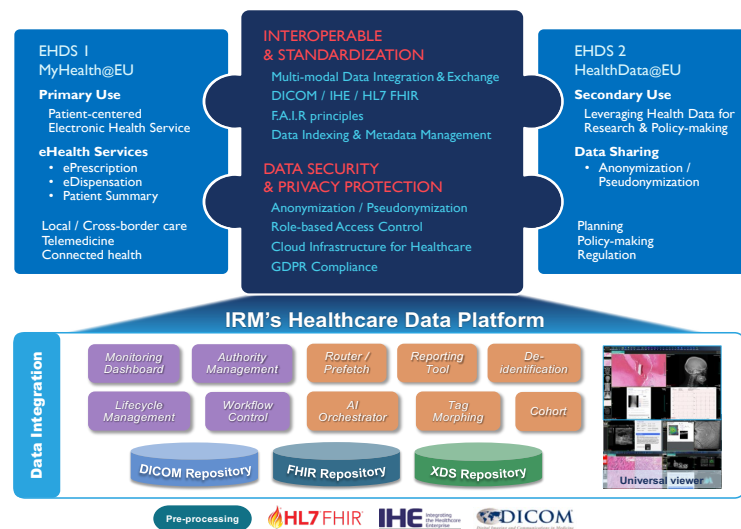
- AI results **standardization**
- Processing original data to ensure **AI-Ready**
- **Collaboration and Joint R&D** with AI companies



COLLABORATION: AREAS OF INTEREST

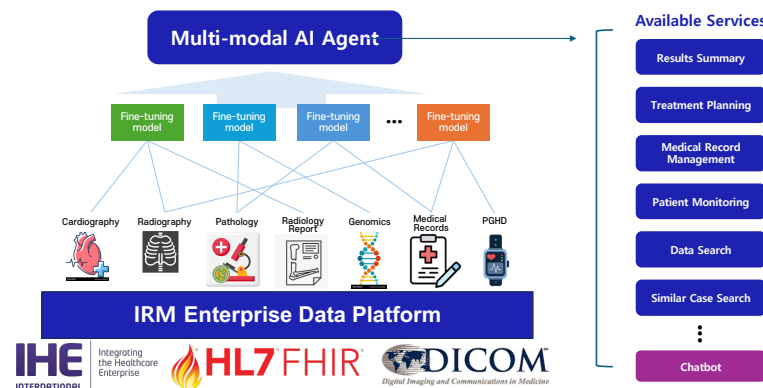
Data Platform for Common Health Data Space

- Enhancing the value and usability of health data
- Advancing **patient-centric data access** & enabling **seamless interoperability** for continuous healthcare
- Ensuring **secure and ethical utilization** of health data for research, innovation and policy decisions



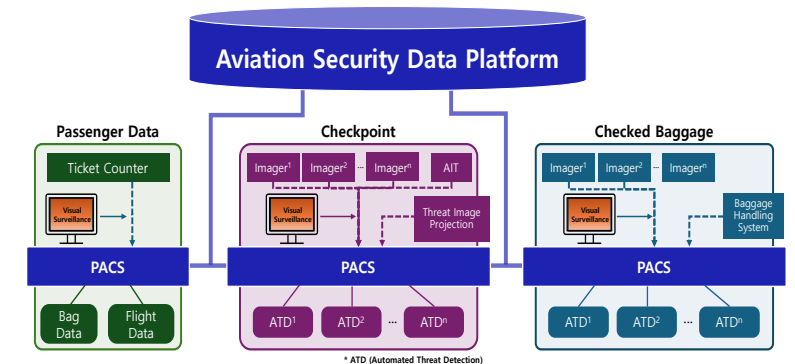
Multi-modal AI Agent on Healthcare Data Platform

- Leveraging **Multi-modal AI analytics** to drive precision medicine & personalized treatment
- Empowering **clinical decision-making** and driving **operational efficiency** through workload optimization
- Establishing **AI-ready healthcare data ecosystem** to accelerate medical research and innovation

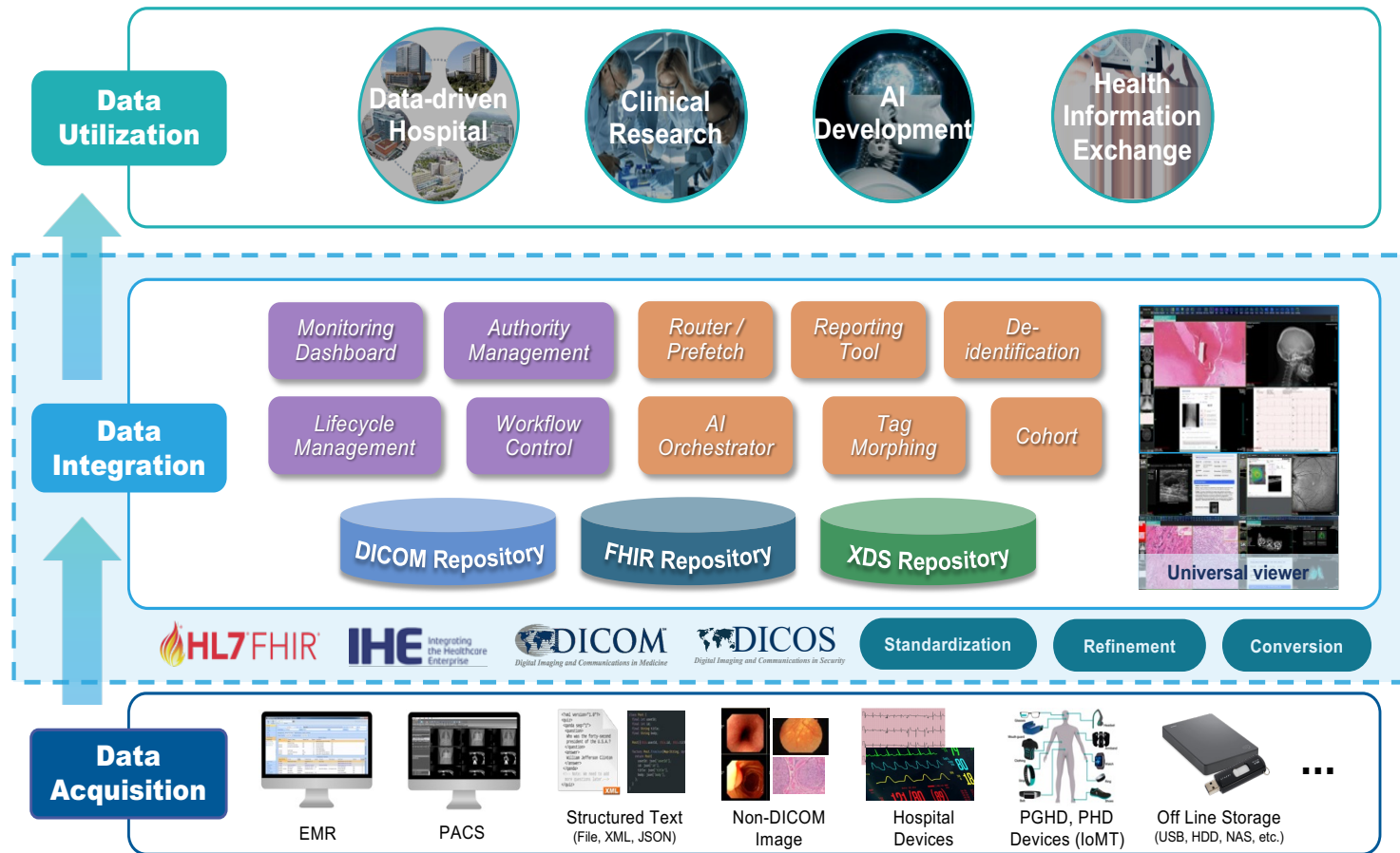


DICOS-based Aviation Security Data Platform

- Facilitating **cross-border security collaboration** through real-time aviation data exchange
- Optimizing **security screening processes** through DICOM standard
- Aligning aviation security protocols with international standards to **future-proof security operations**



COLLABORATION: INNOVATION PARTNERS AND/OR PROJECTS OF INTEREST



Partners for Common Health Data Space

- **EHR vendors** expertise in adapting to diverse national & institutional healthcare systems
- **Hospitals/Clinics** in target countries for collaboration
- Organizations committed to building **EHDS-compliant solutions/services**

Partners for Multi-modal AI Agent

- **Companies, institutions, and research centers** specialized in LLM-based AI development
- Organizations engaged in AI research and development **leveraging Multi-modal medical data**

Partners for Aviation Security Data Platform

- **Companies and institutions** aiming to develop risk analytics & response systems **utilizing integrated aviation security data**
- **Companies, Universities and Research centers** specializing in aviation security technology

IRM Inc.
Samuel Choi
CEO

samuelchoi@irm.kr

+82-10-2502-0416

irmhealthcare.com

