



TravelSafe

Trustworthy AI Safety Layer
for World Mobility

Safety Infrastructure for
Smart & Connected Cities

The Safety Gap in Global Transport

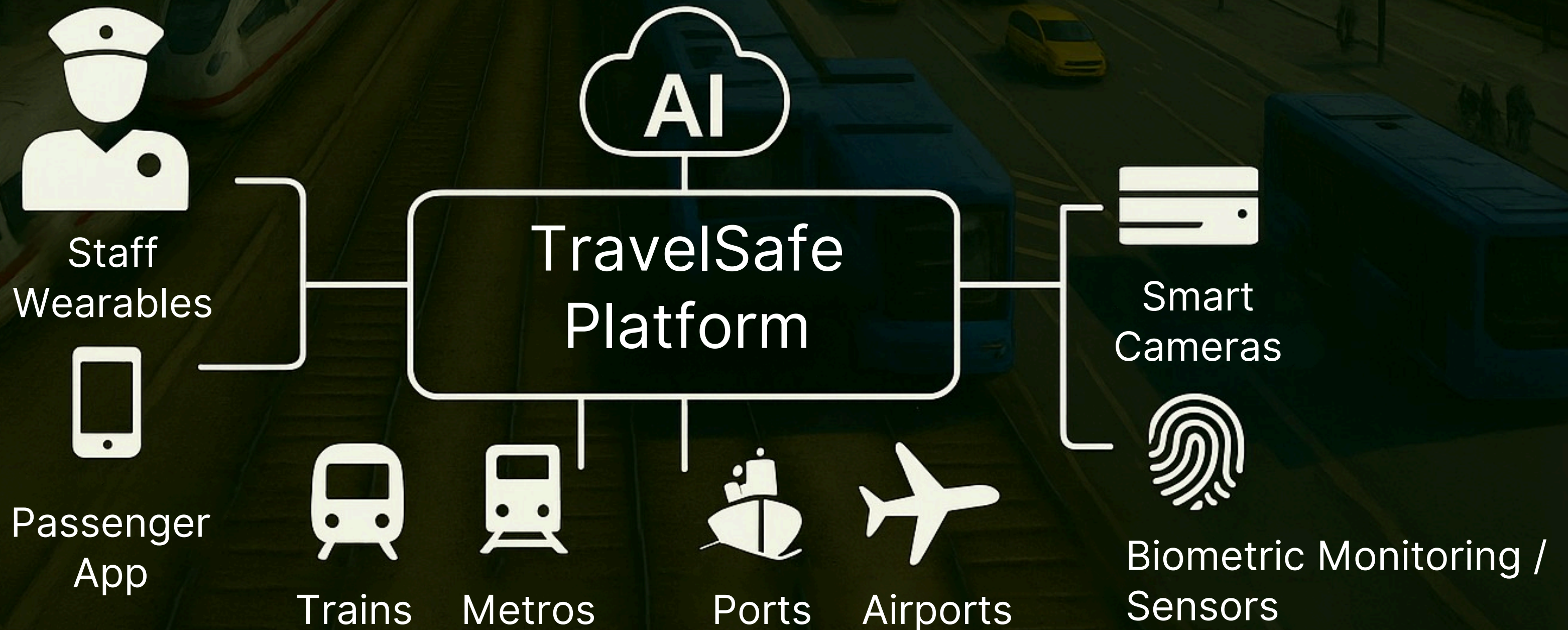
Billions move daily. Few are truly protected

- Every day, billions of passengers and staff use public transport without real protection
- Incidents of violence, theft, emergencies and vandalism occur regularly often unnoticed
- Transport systems are increasingly targeted by terrorism and hybrid (cyber + physical) attacks
- Stations, trains, buses, ports and airports are open, complex, high-value targets

What's missing? - unified, real-time, scalable safety layer that works

AI Safety Infrastructure for Trains, Ports, Airports and Urban Mobility

The platform integrates AI, wearables, mesh networks, sensors and blockchain-protecting passengers and operators across trains, metros, ports and airports



Intelligent. Predictive. Trusted

TravelSafe protects passengers and staff with always-on, AI powered functions secure, fast, and ready for any mobility context. The platform is designed to integrate with existing systems such as ticketing, scheduling, and check in enabling context-aware safety based on real-time travel data.



AI Detection

Identifies
threats



Live Monitoring

Real-time
sensors & cameras



Blockchain Proof

Tamper-proof
blockchain
validation



Easy Reporting

Via app,
wearable or voice



Predictive Alerts

Anticipates
risky events

Empowering People - Tools for Passengers and Staff

TravelSafe empowers passengers and frontline staff with intuitive, always-on tools designed for silent alerts, biometric safety and instant coordination.

Whether you're a traveler, a station manager or a patrol agent - you stay protected, connected, and in control at all times.

Passengers



Anonymous Visual Reporting

Capture and send photos or videos without revealing identity



Multichannel Assistance



Biometric Wearables

Smart bands detect distress or health risks automatically

Staff & Operators



AI Threat Detection

Smart situational awareness from any location



Monitor stress, location and health - generates alerts instantly



Blockchain Validation

Secure, tamper-proof reports and digital Evidence

One platform. Two forces of safety. Human-powered. AI-augmented. Always aware

How TravelSafe Mesh + Satellite Works

Always: On
Emergency
Architecture



When the network is down, TravelSafe creates its own.

Device-to-device Mesh

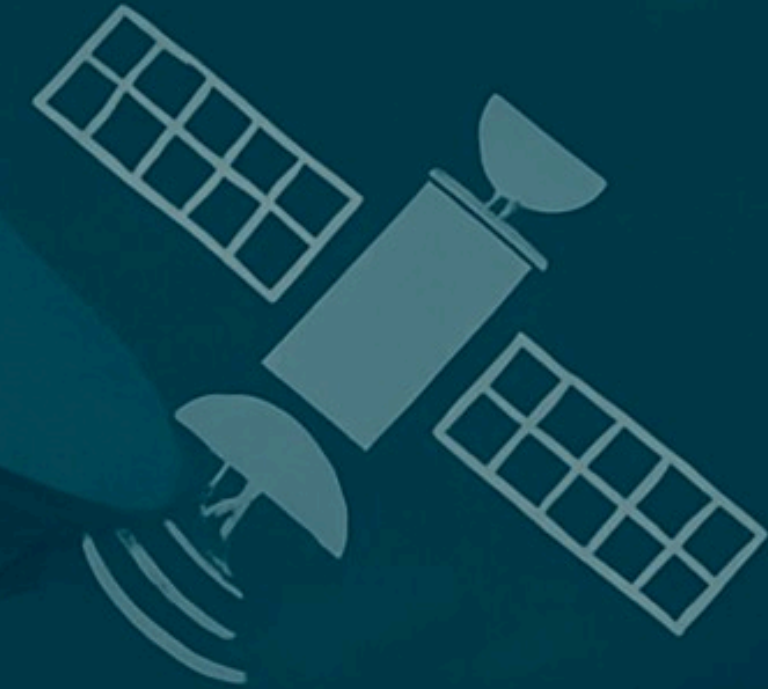


All data is encrypted
and relayed locally

Uplink to Satellite



BLE mesh interconnects
used as backup uplink



Where We Are Now - Technology Readiness Level

Current TRL: Level 6



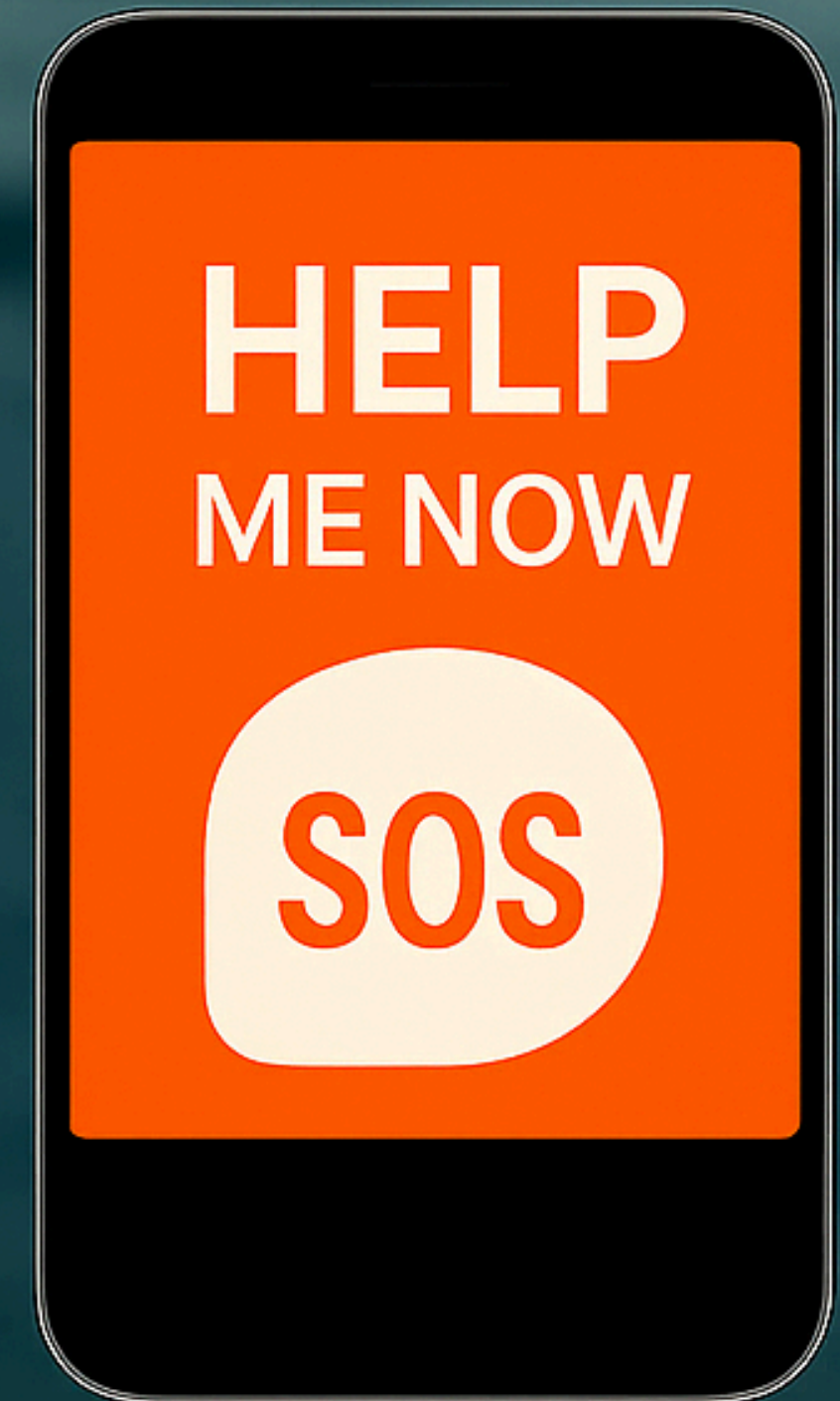
What's already working:

- Help Me Now App - online, tested with real users
- Extended CRM system - operational and field-tested
- Emergency reporting workflows validated in real urban conditions



✓ What TRL 6 means:

Key technologies and systems have been successfully tested as a modular AI-driven safety infrastructure for public mobility systems.



From Prototype to Platform- Core Stack & Roadmap

What We Already Have-INFOMYCITY



HELP ME NOW app
(Validated in Multiple Countries)



Extended CRM System
for Emergency Workflows



Experience in Civic-Tech &
Mobile App Development

What Partners Will Provide-Tech Modules



AI & Chatbot Modules
(Triage, Anomaly Detection)



Blockchain Evidence Layer
(Proof of Report)



Mesh & Satellite fallback
Protocols

With a solid foundation already Validated, TravelSafe is now ready to Evolve into a full-scale AI Safety Platform through Strategic Partnerships.

Go-To-Market Strategy

TravelSafe Combines B2G and B2B go-to-market Models, targeting Smart Cities, Mobility Providers, and NGOs Worldwide.



CITY PILOTS

- Metro Systems
- Train Stations
- Airports
- Bus Networks
- Ports



B2B TARGETS

- Transport Operators (Rail, Bus, Ferry)
- Airport and Metro Security Companies
- NGOs & Civic Tech Platforms
- Emergency Communication Providers



GROWTH STRATEGY

Starting from pilot cities and Mobility Partners, We Scale via Modular Deployment, Cloud Integration and Institutional Cooperation

A Scalable and Inclusive Solution ready for Global Adoption.

One Infrastructure for Public, Private & People

B2G

Public Sector & NGOs



AI threat detection



Blockchain-secured evidence



Integrated communications for transport safety & smart

B2B

Private Companies



Scalable SaaS for transport, logistics & events



Incident management



Analytics SLAs & APIs

B2C

Individual Users



Real-time alerts
Safe-route mapping



Emergency assistance



Community reporting



Offline mesh connectivity

One platform bridging public, private and individual safety-combining predictive AI, secure digital evidence and offline resilience.

One Infrastructure, Three Revenue Streams

Licenses for cities Subscriptions for operators Premium app for people



Cities & NGOs - License

Buyer: transport authority
/municipality

Metering: per network/site
(annual, 12-36m)

- Setup & SLAs/compliance
- **Add-ons:** AI analytics
blockchain evidence

Scalability: replicable city-
by-city; leverages EU &
smart city funding



Operators - Subscription

Buyer: transport/logistics
operator

Metering: per site/device/
(SaaS tiers)

- **Modules:** incident
management - analytics-API
- **Scalability:** upsell via
additional modules and
cross-network integrations



People - Premium App

Buyer: individual users

Metering: freemium →
monthly premium

- **Free:** alerts - safe route
reporting
- **Premium:** Offline mesh
wearable sync-advanced
alerts

Scalability: low CAC via
B2G/B2B distribution; viral
adoption in commuters

Our infrastructure targets a massive, high-traffic market - with clear, measurable growth potential



European Transport Infrastructure - Market Potential (Million Travellers)

From total EU passenger volumes to our projected market adoption in 2-3 years

TAM

Total annual travellers across EU-wide transport

15,500 M

(100%)

SAM

Travellers in networks directly addressable by our infrastructure

500 M

(~3%)

SOM

Projected adoption within 2-3 years

100 M

(~0,6%)



A scalable, cross-network opportunity - ready for rapid adoption.

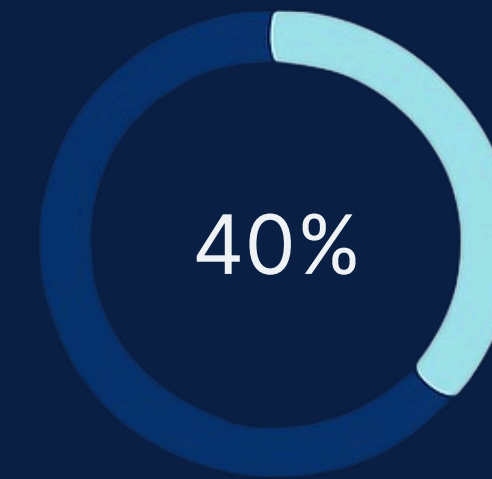
HOW WE WILL USE THE FUNDING

To achieve rapid growth and global adoption, we require up to €1M for a 12-month plan.



Product & Technology

-  Core product development & architecture
-  AI-driven threat detection
-  Blockchain-based data protection
- Mesh networking & satellite communications



Go-to-Market & Growth

-  International go-to-market strategy
-  Scalable user acquisition campaigns
-  PR, events & community building
-  Strategic partnerships & compliance for EU/global rollout

This allocation enables fast execution, market expansion, and sustainable global impact.

TEAM

- 🕒 Andrea Ceravolo - Founder & CEO
- ⚙️ 2 Software Engineers – app & platform development
- ✍️ Digital Marketing Specialist - growth & user acquisition
- ▶️ Creative Media Specialist - video, campaigns & storytelling
- ⌘ Translator - multilingual communication & EU expansion

VISION

- ✓ Building the Safety Infrastructure Layer for Transport & Smart Cities
- ✓ Specialized in app development & civic-tech projects
- ✓ Scalable Inclusive Ready for global adoption