

A hand is shown interacting with a futuristic digital interface. The interface consists of a grid of glowing blue and green nodes connected by thin lines, with various medical icons like a heart, a pill, and a microscope. The background is a dark green with a pattern of hexagons and other medical symbols. The overall aesthetic is high-tech and scientific.

Driving force in
Drugs and Health Products
Development Services

GLP Multi-Site Facility
Jan '25

vector 
BENCH 2 BEDSIDE

ONE-STOP SHOP

Clinical Research Roadmap from Preclinical to Clinical



DISCOVERY & SCREENING
Proof of Concept Studies
in Vitro & in Vivo



TOXICOLOGY
GLP/non-GLP
Rodents & Non-Rodents



CMC
From Lab Scale to GMP
Small Molecules & Biologics



CRO
Phase I-III Clinical Trials
Phase IV After Market
including Epidemiological
and Observational Studies



R&D
PORTFOLIO
MANAGEMENT

TARGET

HIT

LEAD

CANDIDATE

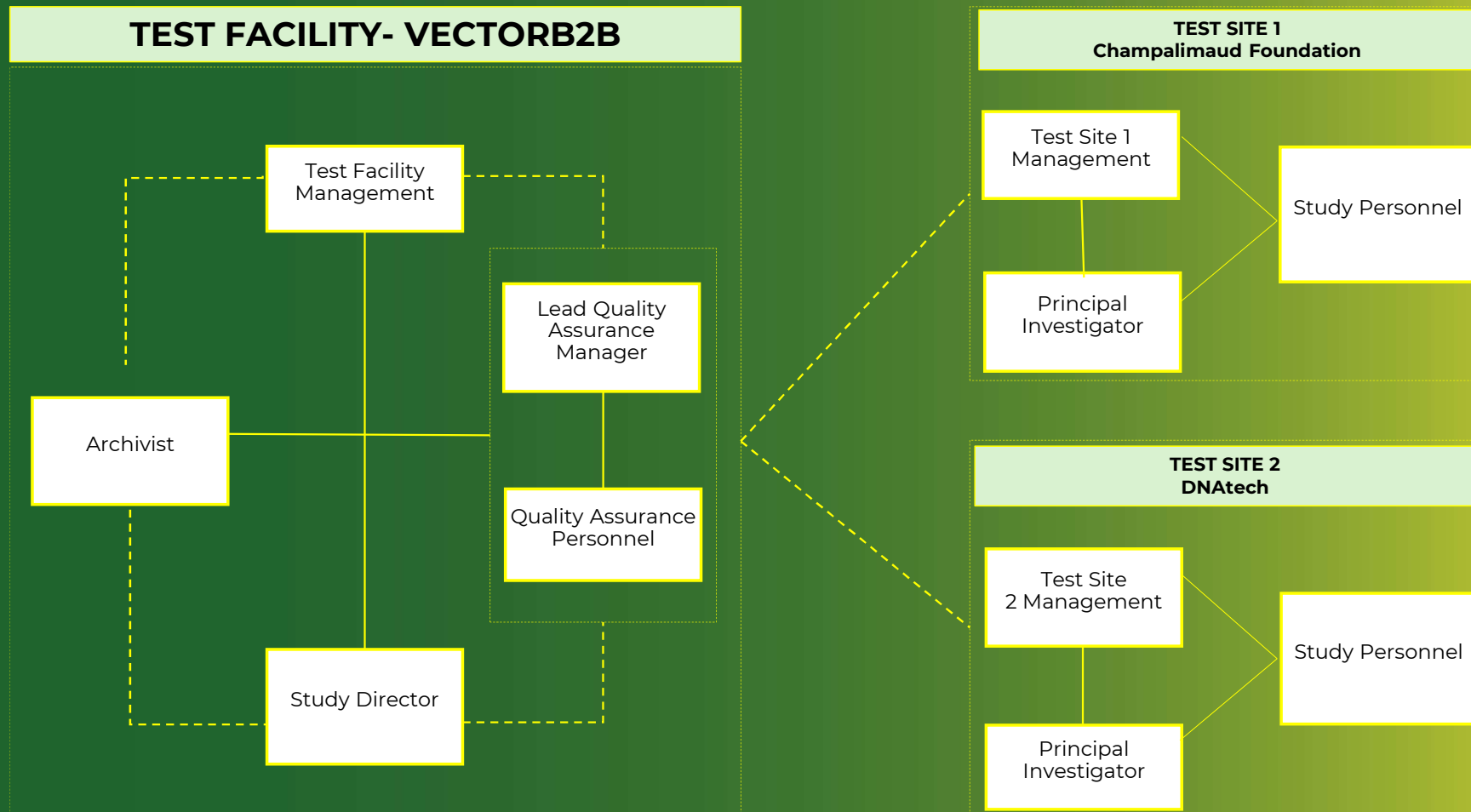
DRUG/ MEDICAL DEVICE/ HEALTH PRODUCT

VB2B Multi-Site GLP Facility



Our GLP-Tox unit at VectorB2B was established in 2021, combining the strengths of VectorB2B's experience as a CDMO/CRO, the expertise in animal research from the Vivarium at Champalimaud's Foundation and the proficiency of DNAtech in animal clinical analysis and histopathology. In 2022, we began the process of obtaining GLP certification from the Portuguese Medicines and Health Products Authority (INFARMED). After a pre-inspection in September 2023, we were set to receive full GLP certification in May 2024. **We are the only Portuguese facility to be able to perform GLP toxicology studies in rodents.** Since our inception, we have conducted various studies, including pharmacokinetic, sub-acute and acute toxicology studies. As a growing toxicology CRO, we leverage the expertise of our accredited professionals, who bring decades of experience in animal research, clinical analysis, histopathology, and drug development.

VB2B Multi-Site GLP Facility



Our core team at the test facility (VB2B)



Co-CEO
Ana Custódio

Role in GLP unit: Test Facility Manager

Over 25 years of experience in R&D and operations within the pharmaceutical industry and academia, focusing on drug development. Expertise in strategic management, digital transformation, and institutional partnerships. Led initiatives that resulted in business development growth. PhD in Agronomy, specializing in monoclonal and recombinant antibodies. Certified in Lean Six Sigma Black Belt and Project Management.



Head of Non-Clinical Services
Ana Simões

Role in GLP unit: Study Director

Over 20 years of experience in scientific research, specializing in neuropharmacology, focusing on neuroprotective mechanisms. Extensive experience in R&D and project coordination and 3-year experience in leading a team working in preclinical development. PhD in Health Sciences with DGAV accreditation and certified in Project Management. Published author in high-impact, peer reviewed, international journals.



Head of GLP Services
Filomena Silva

Role in GLP unit: Study Director & QA

Over 20 years of experience in scientific research, specializing in mitochondrial biology, oxidative stress, and neurodegenerative diseases. Extensive expertise in R&D, drug discovery, and project coordination. Chief Scientific Officer at Mitotag, leading innovation in antioxidant delivery systems. PhD in Health Sciences and Technologies) and researcher accreditation. Published author in high-impact journals and experienced in international collaborations.



Non-Clinical Scientist
Raquel Boia

Role in GLP unit: Study Personnel & Study Director

Over 10 years of experience in scientific research, focusing on unraveling the mechanisms underlying retinal diseases and identifying new therapeutic targets and biomarkers. Expertise in animal models of aging and disease, with DGAV accreditation. Trained at the FRAME/IBILI in experimental design and statistical analysis of biomedical experiments. PhD in Ageing and Chronic Diseases



In Vivo Scientist
Ana Leonardo

Role in GLP Unit: Study Personnel & Study Director

In vivo scientist specializing in preclinical oncology research, with expertise in study design, drug discovery, and targeted therapies. Currently leads *in vivo* research projects supporting translational medicine within a CRO framework. Holding an MSc in Veterinary Medicine with a FELASA B certificate, she has presented her work at international conferences, including ESLAV-ECLAM 2023, and contributed to scientific publications.

Our core team at the test site 1 (Champalimaud)



Animal Platform Coordinator
Isabel Campos

Role in GLP unit: Test Facility Manager

25 years of expertise in animal models for biomedical research. 15+ years managing animal facilities, optimizing operations, and providing specialized research services. Skilled in streamlining workflows, leading teams, and fostering collaboration. Proven leadership in research platform oversight and regulatory compliance. Background in Chemical Engineering, PhD in Biology, and Postgrad in Medicine



Designated Veterinarian
Catarina Carvalho

Role in GLP unit: Principal Investigator

Over 15 years of experience working with rodent models with a focus on cancer and neuroscience research. Currently serving as Designated Veterinarian at the Champalimaud Foundation Vivarium. Laboratory Animal Science trainer and expert on administration, collection, and surgical techniques. Veterinary Medicine integrated Masters degree, PhD in Veterinary Sciences, specialty Biological and Biomedical Sciences.



Service Manager
Ana Vaz

Role in GLP unit: Principal Investigator

Experienced in rodent handling since 2008, specializing in colony management, breeding, and maintaining 200+ strains. Oversees institutional colony services, ensuring ethical and scientific standards. Acts as liaison between researchers and staff to optimize outcomes. Holds an MSc in Immunology and has completed multiple courses in lab animal sciences and related techniques.



Animal Welfare Officer
Rute Marques

Role in GLP unit: Study Personnel

Over 20 years of experience in laboratory animal science and biomedical research, with a focus on ethical oversight, animal health & welfare, and regulatory compliance. Currently serving as Animal Welfare Officer at Champalimaud Foundation, leading ORBEA coordination, project license reviews, and training. Veterinary degree, PhD in Immunology from University College London, postdoctoral research at MRC-NIMR) and Institut Pasteur, all using animal models.



Animal Technician
Bruno Novais

Role in GLP unit: Study Personnel

Rodent Platform Technician with over 15 years of experience in animal research, specializing in rodent colony management, vivarium operations, and research support. Skilled in colony management, genotyping, and overseeing daily facility activities. Holds an MSc in Conservation Biology and multiple certifications in laboratory animal science, including FELASA-accredited training.

Our core team at the test site 2 (DNAtech)



CEO & CTO
Ângela Xufre



Senior Veterinary Technician
Cheila Antunes



**Histopathology
Technician & Trainer**
Inês Carvalho



Veterinary Pathologist
Rui Faísca

Role in GLP unit: Test Facility Manager

Founder of DNAtech, a company that provides services in Veterinary Medicine **since 2004** with expertise and extensive experience in clinical analysis. PhD in Biology & Molecular Biology

Role in GLP unit: Test Site 2 Principal Investigator

Senior Veterinary Technician & Manager with over 14 years of experience in veterinary laboratory analysis. Currently Technical Manager at DNAtech, ensuring laboratory operations, equipment maintenance, and team supervision. Extensive expertise in microbiology and immunology. BSc. in Microbiology.

Role in GLP unit: Study Personnel

Senior Histopathology Technician with over 10 years of experience in veterinary pathology and histopathology techniques. Trainer for students at the Escola Superior de Tecnologia da Saúde de Lisboa, specializing in histopathology, cytology, hematology, endocrinology, and molecular biology. BSc. in Pathological, Cytological, and Thanatological Anatomy.

Role in GLP unit: Study Personnel

Veterinary Pathologist & Experimental Pathologist with over 20 years of experience in Veterinary Pathology. Former Head of Histopathology Facility at Instituto Gulbenkian de Ciência (2017-2024). PhD in Veterinary Sciences.

+ Quality Assurance

+ Archivists

No- paper facility

TOXICOLOGY

Services

GENERAL *IN VIVO* TOXICOLOGY

- ▶ Acute Toxicity
- ▶ Sub-acute (28 days) toxicity
- ▶ Sub-chronic (90 days) toxicity
- ▶ Chronic Toxicity

GENOTOXICITY

- ▶ Bacterial Reverse mutation test (OECD TG 471, ICH S2 (R1))
- ▶ In vitro Micronucleous Test (OECD TG 487, ICH S2 (R1))
- ▶ Mammalian chromosome aberration Bacterial Reverse mutation test (OECD TG 471, ICH S2 (R1))
- ▶ in vitro – OECD TG 473

SAFETY PHARMACOLOGY

- ▶ Central Nervous System – Irwin Test
- ▶ Cardiovascular System – hERG and Purkinje studies
- ▶ Respiratory System – whole body plethysmography

IN VITRO STUDIES

- ▶ Skin sensitization (OECD TG 442C,D,E)
- ▶ Skin absorption (OECD TG 428)
- ▶ Skin irritation (OECD TG 439)
- ▶ Eye irritation (OECD TG 492)
- ▶ Skin corrosion (OECD TG 431)
- ▶ Phototoxicity (OECD TG 432, 498)



vector

BENCH 2 BEDSIDE

Looking forward to working
together in the future

Please contact us:
info@vectorb2b.com

Avenida da Liberdade, n.º 258, 6.º
1250-149 Lisboa, Portugal

vectorb2b.com

