



**CHARIGNON**

**Charignon is a SME, located in Chatuzange-Le-Goubet, in Auvergne Rhône Alpes region (France).**

**The company was created in 1974 and its main activities are the following ones:**

**Calculation, Design, 3D modelling and manufacturing of lattice steel towers principally used in the fields of electrical transport, telecommunication and wind turbines supports.**

**CHARIGNON sells its products in more than 50 countries.**

**CHARIGNON is certified ISO 9001 – ISO 45001 (Health and Security).**

**Environment is at the center of our concerns, and that is why CHARIGNON is also certified ISO 14001 and has integrated in 2022 its new site in compliance with the new energy requirements.**



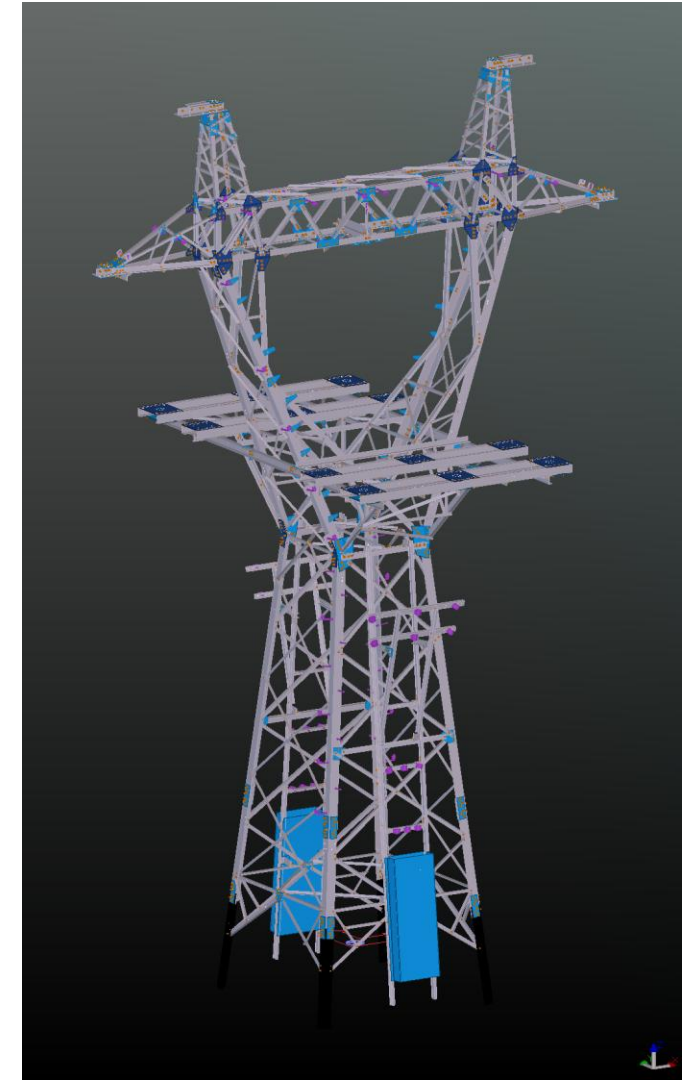
# MACHINE PARK

MACHINE TYPE	BRAND	MODEL NAME	YEAR OF PRODUCTION	CAPACITY	QUANTITY
LASER	MAZAK	Optiflex 3015 Fiber III	2019	10 kW	1
PLATE BENDING MACHINE	JEAN PERROT	Maneo	2020	250 Tonnes	1
CNC PUNCH	VERNET	VPX 94	2016	4 Punching heads / The angles range from 35x4 to 90x9	1
CNC PUNCH	VERNET	VP156	2007	6 Punching heads / The angles range from 35x4 to 150x15	1
CNC DRILL	VERNET	HD1215	2013	3 Drilling heads. Maximum capacities are for angles L250X25, UPN and UPE 400 mm, IPN and IPE 750 mm and HEA, HEB, HEM 1000 mm	1
CNC PUNCH/DRILL	VERNET	VPX256S-XD	2024	6 Punching heads and 2 drilling heads . Maximum capacities are for angles L250X25	1
PAINTING SYSTEM	ALM	Convoyeur aérien BM4	2022	Maximum load per swing 750 kg, 12 swings	1
OVERHEAD CRANE	ADC	Monopoutre MC-P	2022	3.2 Tonnes	8
CRANE	ADC	Monopoutre 5T	2022	5 Tonnes	1
WELDING MACHINE	ESAB	WARRIOR 500I	2020	500 A	3
CUTTING MACHINE	BIRIM MAKINA	Press 63 T	2013	63 Tonnes	1
BENDING MACHINE	SAHIN MAKINA	AT 1020-100	2015	Maximum capacities are for angles L250X25	1
GRINDING MACHINE	H. ERNAUIT SOMUA	Z3C	2000	Maximum capacities are for angles L180x18	1

# DESIGN OFFICE

The Charignon company has a design office made up of 4 designers, 3 employees in the methods department, 1 scheduling technician and a customer relations manager. Thanks to this multidisciplinary team we are able to carry out a wide range of projects ranging from programming on a 2D plan to the design of a 3D prototype. Tekla Structure, Bricscad as well as in-house software Derynis are our CAD solutions. We attach great importance to respecting the technical characteristics and deadlines of our customers.

We are able to do calculation of tower if the customer needs.



**CHARIGNON is certified ISO 9001 – ISO 45001 (Health and Security). Environment is at the center of our concerns, and that is why CHARIGNON is also certified ISO 14001 and has integrated in 2022 its new site in compliance with the new energy requirements.**

LRQA

Current issue date: 12 December 2023  
Expiry date: 31 October 2026  
Certificate identity number: 10560754

Original approval(s):  
ISO 9001 - 15 April 1999

Certificate of Approval

This is to certify that the Management System of:  
**CHARIGNON**

95 Chemin de la Part Dieu, 26300 CHATUZANGE LE GOUBET, France

has been approved by LRQA to the following standards:  
**ISO 9001:2015**

Approval number(s): ISO 9001 – 00027179

The scope of this approval is applicable to:  
Design and manufacture of steel lattice towers.

Paul Graaf

Area Operations Manager, Europe  
Issued by: LRQA Limited



LRQA Group Limited, its affiliates and subsidiaries and their respective officers, employees or agents are, individually and collectively, referred to in this clause as 'LRQA'.  
LRQA assumes no responsibility and shall not be liable to any person for any loss, damage or expense caused by reliance on the information or advice in this document or  
howsoever provided, unless that person has signed a contract with the relevant LRQA entity for the provision of this information or advice and in that case any responsibility or  
liability is exclusively on the terms and conditions set out in that contract.  
Issued by: LRQA Limited, 1 Trinity Park, Bickenhill Lane, Birmingham B37 7ES, United Kingdom

Page 1 of 1

LRQA

Current issue date: 12 December 2023  
Expiry date: 31 October 2026  
Certificate identity number: 10560756

Original approval(s):  
ISO 14001 - 24 May 2018

Certificate of Approval

This is to certify that the Management System of:  
**CHARIGNON**

95 Chemin de la Part Dieu, 26300 CHATUZANGE LE GOUBET, France

has been approved by LRQA to the following standards:  
**ISO 14001:2015**

Approval number(s): ISO 14001 – 00027178

The scope of this approval is applicable to:  
Design and manufacture of steel lattice towers.

Paul Graaf

Area Operations Manager, Europe  
Issued by: LRQA Limited



LRQA Group Limited, its affiliates and subsidiaries and their respective officers, employees or agents are, individually and collectively, referred to in this clause as 'LRQA'.  
LRQA assumes no responsibility and shall not be liable to any person for any loss, damage or expense caused by reliance on the information or advice in this document or  
howsoever provided, unless that person has signed a contract with the relevant LRQA entity for the provision of this information or advice and in that case any responsibility or  
liability is exclusively on the terms and conditions set out in that contract.  
Issued by: LRQA Limited, 1 Trinity Park, Bickenhill Lane, Birmingham B37 7ES, United Kingdom

Page 1 of 1

LRQA

Current issue date: 12 December 2023  
Expiry date: 31 October 2026  
Certificate identity number: 10560752

Original approval(s):  
ISO 45001 - 19 February 2021

Certificate of Approval

This is to certify that the Management System of:  
**CHARIGNON**

95 Chemin de la Part Dieu, 26300 CHATUZANGE LE GOUBET, France

has been approved by LRQA to the following standards:  
**ISO 45001:2018**

Approval number(s): ISO 45001 – 00029433

The scope of this approval is applicable to:  
Manufacture of steel lattice towers.

Paul Graaf

Area Operations Manager, Europe  
Issued by: LRQA Limited



LRQA Group Limited, its affiliates and subsidiaries and their respective officers, employees or agents are, individually and collectively, referred to in this clause as 'LRQA'.  
LRQA assumes no responsibility and shall not be liable to any person for any loss, damage or expense caused by reliance on the information or advice in this document or  
howsoever provided, unless that person has signed a contract with the relevant LRQA entity for the provision of this information or advice and in that case any responsibility or  
liability is exclusively on the terms and conditions set out in that contract.  
Issued by: LRQA Limited, 1 Trinity Park, Bickenhill Lane, Birmingham B37 7ES, United Kingdom

Page 1 of 1







*We are here for solutions and innovations*

**Switzerland / Swissgrid / Hybrid tower made of steel and composite**













THANKS FOR YOUR  
ATTENTION

