

PUMPS & SYSTEMS

FULL PRODUCT RANGE





View our
Products
Online

END SUCTION PUMPS
SPLITCASE PUMPS
AXIAL & MIXED FLOW PUMPS
DEEP WELL PUMPS
DRAINAGE PUMPS
MULTISTAGE PUMPS
SEWAGE PUMPS
CONCRETE VOLUTE PUMPS

High quality pumping systems

Through our production scale, we are able to support a wide range of centrifugal pumps which are suitable for several applications in a power plant, such as:

- ✓ Vertical Pumps for Cooling (main & auxiliary)
- ✓ Concrete Volute Pumps for Cooling
- ✓ High Pressure boiler feed pumps (electric driven)
- ✓ Condensate extraction pumps
- ✓ Desalination intake
- ✓ All miscellaneous pumps (like horizontal pumps end-suction type, sump type vertical pumps, axial split casing pumps etc.)

DP PUMPS is also specialized in pumps for all kinds of infrastructure projects like irrigation, flood control, drainage and dewatering, having our specialty but not limited in:

- ✓ Vertical Turbine & Mixed Flow Pumps
- ✓ Vertical Propeller Pumps
- ✓ Submersible Propeller Pumps
- ✓ Concrete Volute & metallic Pumps (engineered pumps series)
- ✓ A very big range of Split Casing Pumps (Horizontal and Vertical)

Moreover DP PUMPS provides many solutions for the Oil & Gas sector in several applications like:

- ✓ Horizontal Process Pumps (several types in compliance with API-610)
- ✓ Vertical Mixed Flow Pumps for sea water (or fresh water) cooling
- ✓ Condensate Pumps
- ✓ Several special designed Sump Pumps and all kind of miscellaneous pumps





MV

Vertical Mixed Flow Pumps

- ⊙ Capacity Up to 60000 m³/h
- ⊙ Total Head up to 250 m
- ⊙ Pull out design available
(Custom Engineered pumps with higher capacities available)
- ⊙ API 610 latest edition available
(VS-1 type)



AV

Vertical Axial Flow Pumps

- ⊙ Capacity Up to 60000 m³/h
- ⊙ Total Head up to 10 m per stage
- ⊙ Pull out design available (Custom Engineered pumps with higher capacities available)
- ⊙ API 610 latest edition available
(VS-3 type)



AVS - MVS

Submersible Axial / Mixed Flow Pumps

Submersible Axial Flow Pumps

- ⊙ Capacity Up to 25000 m³/h
- ⊙ Total Head up to 10 m

Submersible Mixed Flow Pumps

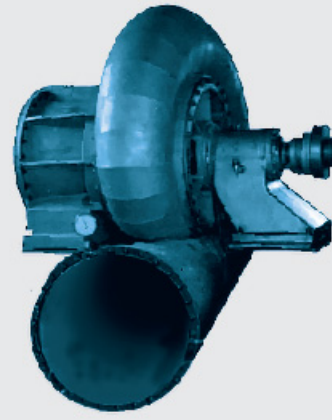
- ⊙ Capacity Up to 13000 m³/h
- ⊙ Total Head up to 20 m



CVP-NA

Concrete Volute Pumps

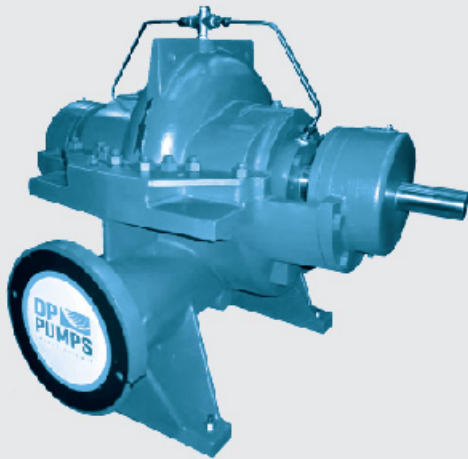
- ⊙ Capacity Up to 105000 m³/h
- ⊙ Total Head up to 35 m
- ⊙ Temperature up to 50° C
- ⊙ Casing with Pre-Fabricated Concrete Parts or Steel Liner available
- ⊙ Metallic Parts Pull Out Design



NA/FV

Fabricated Metallic Volute Pumps

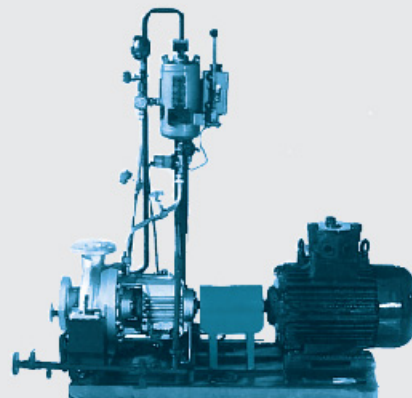
- ⊙ Capacity Up to 60000 m³/h
- ⊙ Total Head up to 100 m
- ⊙ Mixed Flow for high capacities
- ⊙ Radial Flow for high head
- ⊙ Pre-Fabricated Parts
- ⊙ Assembly on Site



AS,ASN,ASN-E,NDS,SIRET

Axially Split Casing Horizontal & Vertical Pumps

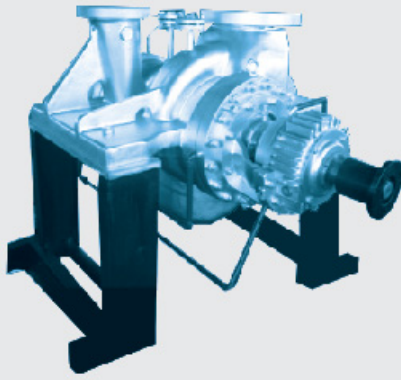
- ⊙ Capacity Up to 15000 m³/h
- ⊙ Total Head up to 240 m
- ⊙ Max. Operating Pressure up to 25 bar
- ⊙ Temperature up to 120° C



TA,CM,NPM,TERMA,RDT

Process (End Suction) Pumps

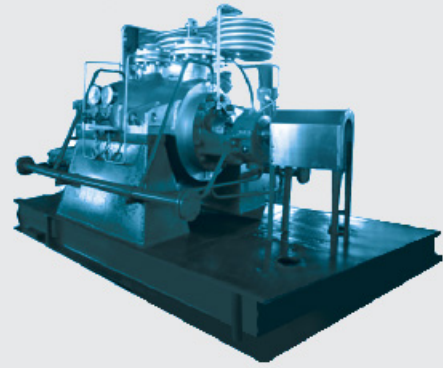
- ⊙ Capacity Up to 2000 m³/h
- ⊙ Total Head up to 250 m
- ⊙ Max. Working Pressure 50 bar
- ⊙ Heavy Duty design, acc API-610 latest edition available (OH-1 type)



RDC

Horizontal Process Double Flow Pumps

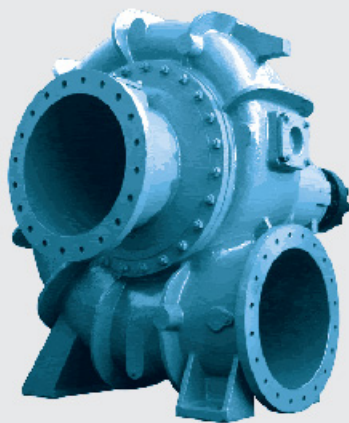
- ⊙ Capacity Up to 2200 m³/h
- ⊙ Total Head up to 320 m
- ⊙ Max. Working Pressure 40 bar
- ⊙ Temperature up to 350 °C
- ⊙ Heavy Duty design, acc API-610 latest edition available (BB-2 type)



MM, MT, MET, MD, OLT

Multistage High Pressure Centrifugal Pumps

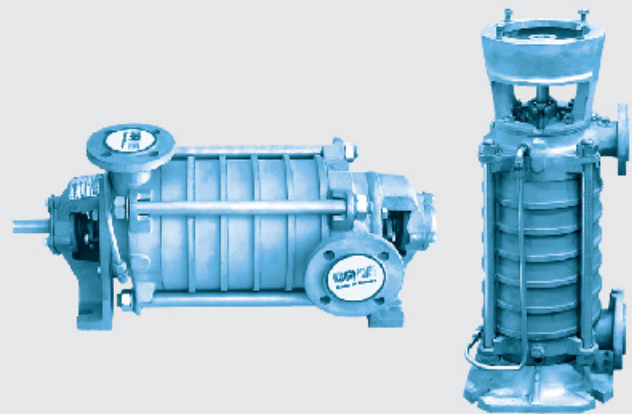
- ⊙ Capacity Up to 1000 m³/h
- ⊙ Total Head up to 2250 m
- ⊙ Max. Working Pressure 250 bar
- ⊙ Temperature up to 200 °C
- ⊙ Heavy Duty design, acc API-610 latest edition available (BB-4, BB-5 types)



NAX, BRATES

End Suction Mixed Flow Pumps

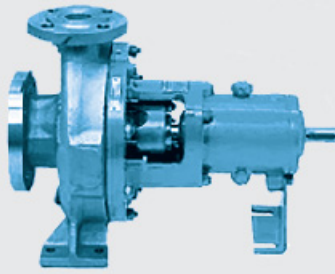
- ⊙ Capacity Up to 15000 m³/h
- ⊙ Total Head up to 40 m
- ⊙ Temperature up to 120° C
- ⊙ Available in Horizontal & Vertical Arrangement



MS, MS-E

Centrifugal Multistage Pumps

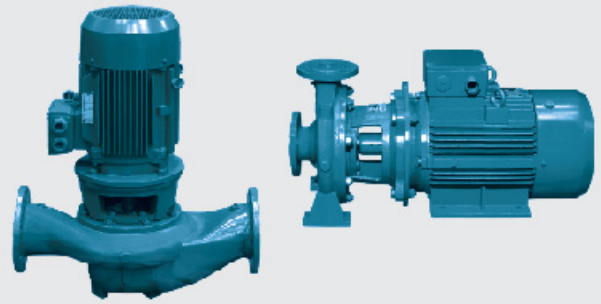
- ⊙ Capacity Up to 550 m³/h
- ⊙ Total Head up to 350 m
- ⊙ Max. Casing Pressure up to 40 bar
- ⊙ Temperature -20° C up to 140° C



MDP

End Suction Pumps according to ISO 5199 (DIN24256)

- ⊙ Capacity up to 1600 m³/h
- ⊙ Head up to 160 m
- ⊙ Temperature up to 140° C
- ⊙ Working pressure up to 16 bar



DP-BLOCK IL-N

Centrifugal Mono-block Single Stage Pumps, Single Stage In-line Pumps

- ⊙ Capacity Up to 300 m³/h
- ⊙ Total Head up to 90 m
- ⊙ Max. Working Pressure 10 bar
- ⊙ Temperature up to 140° C



LDP, LDP-X, NA Conf. VD

End Suction Vertical Pumps

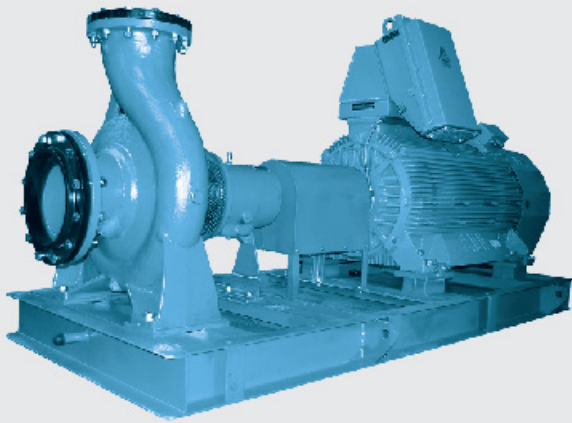
- ⊙ Capacity up to 2500 m³/h
- ⊙ Head up to 150 m
- ⊙ Temperature up to 140° C
- ⊙ Working pressure up to 16 bar



LDP, LDP-X, NA Conf. VW

End Suction Vertical Pumps for Wet Installation

- ⊙ Capacity up to 1000 m³/h
- ⊙ Head up to 100 m
- ⊙ Temperature up to 70° C
- ⊙ Working pressure up to 16 bar
- ⊙ API 610 latest edition available (VS-4 type)



LDP, LDP-X, NA

**End Suction Pumps acc. to EN733
& Oversized End Suction Pumps**

End Suction Pumps according to EN733 (DIN24255)

- ⊙ Capacity up to 550 m³/h
- ⊙ Head up to 100 m

Oversized End Suction Pumps

- ⊙ Capacity up to 2500 m³/h
- ⊙ Head up to 150 m
- ⊙ Temperature up to 140° C
- ⊙ Working pressure up to 16 bar



CP

Condensate Extraction Pumps

- ⊙ Capacity Up to 10000 m³/h
- ⊙ Total Head up to 400 m
- ⊙ Special first stage for low NPSHr
- ⊙ Mixed Flow for high capacities
- ⊙ Radial Flow for high head
- ⊙ API 610 latest edition available (VS-6 type)



SP

Sewage Pumps

- ⊙ Capacity up to : 15000 m³/h
- ⊙ Total Head up to : 80m
- ⊙ Non clogging single or double and vortex type impeller



DWP, MA

Vertical Deep Well Pumps

- ⊙ Capacity Up to 600 m³/h
(standard construction)
- ⊙ Total Head up to 260 m
- ⊙ Setting 150 m
- ⊙ Bowl Sizes 6" – 12" (bigger sizes as optional)
- ⊙ Speed up to 3600 RPM
- ⊙ API 610 latest edition available (VS-1 type)

DIESEL FUEL SUPPLY / FEEDING SKIDS

Skid-Mounted system, Engineer - to - Order (ETO)

Designed and manufactured based on very specific customer requirements.

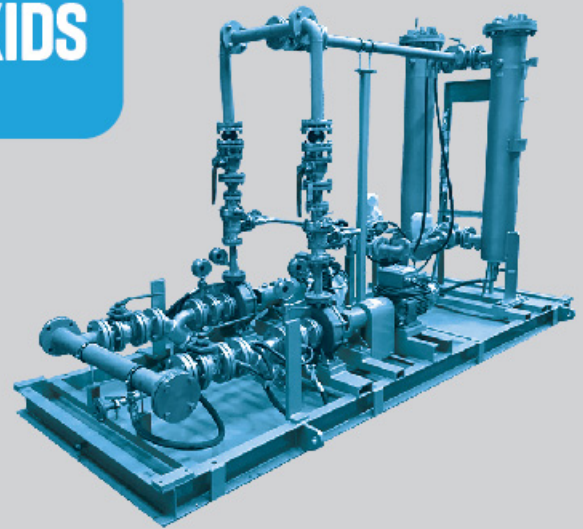
Applications:

- GT Fuel Feeding
- Diesel Oil Transfer

System Components:

- Pumps
- Motors
- Control Panel
- Fuel Dual Filter
(Filtration degree as per application specs)
- Pressure & Heat Transmitters
- Valves & Hydraulic Equipment
- Flow Meter (Custody Transfer available)

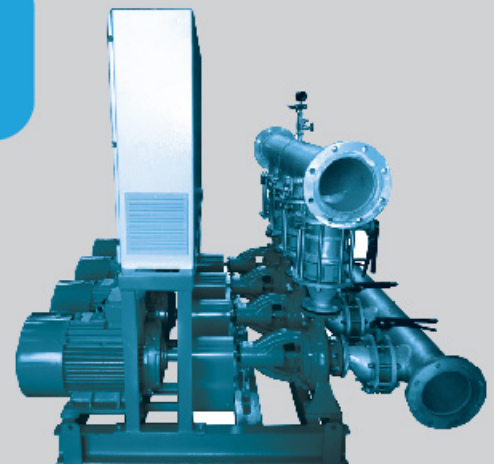
* All equipment is ATEX certified



BOOSTER SYSTEMS

Water Pressure Booster Pump Systems

Booster systems are used when there is a need of pressure or capacity increase of the supply water. The basic operation of the systems, is achieved by the control of the main water through a digital function pressure switch (simple system) or analogue function pressure sensor (Systems operated with VFD). Sensor function starts and stops the system operation. Booster system varied upon technical specifications need, covering a wide range of applications.



FIREFIGHTING SYSTEMS

Compact Firefighting Pump Systems

DP Pumps manufactures COMPACT Firefighting Systems covering wide range of applications such as residences, hotels, hospitals, Industries etc. All Firesystems complying to European regulations. DP PUMPS fire systems are skid mounted fire sets, pre-wired and tested at our testing facilities ready for operation. DP PUMPS also provides fire systems according to EN 12845.





Visit our Website



View our Projects



HEADQUARTERS

16 KOLOKOTRONI St, KRYONERI, ATTICA, GREECE
TEL.: +30 210 8161402, FAX: +30 210 8161262
info@dppumpsgroup.com
www.dppumps.global





WATER BRINGS LIFE. WE BRING WATER.