



Global Challenges in the Clinical Trials



**Efficient trials
and faster time-
to-market of new
medicines**



**Less manual
duplication
and verification
of medical data**



**Statistically
healthy and
qualitative
results**

MCR Clinic Automate

MCR Clinic™ integrates and automatically collects data from the patient's electronic health record (EHR), which becomes the clinical trial participant's source data (eSource)

We deliver necessary Data & Tools

- ✓ **Real-time remote monitoring by Sponsor**
- ✓ **Simplified day-by-day trial management by Site**
- ✓ **Validation of all data (100% eSource Data Verification)**

Remote Trial Auto-Monitoring by Sponsor

Automated Trial Management by Clinical Site

— eSource Remote
Viewer™
[MCR eSRV™]



— Clinical Site
Manager™
[MCR CSM™]

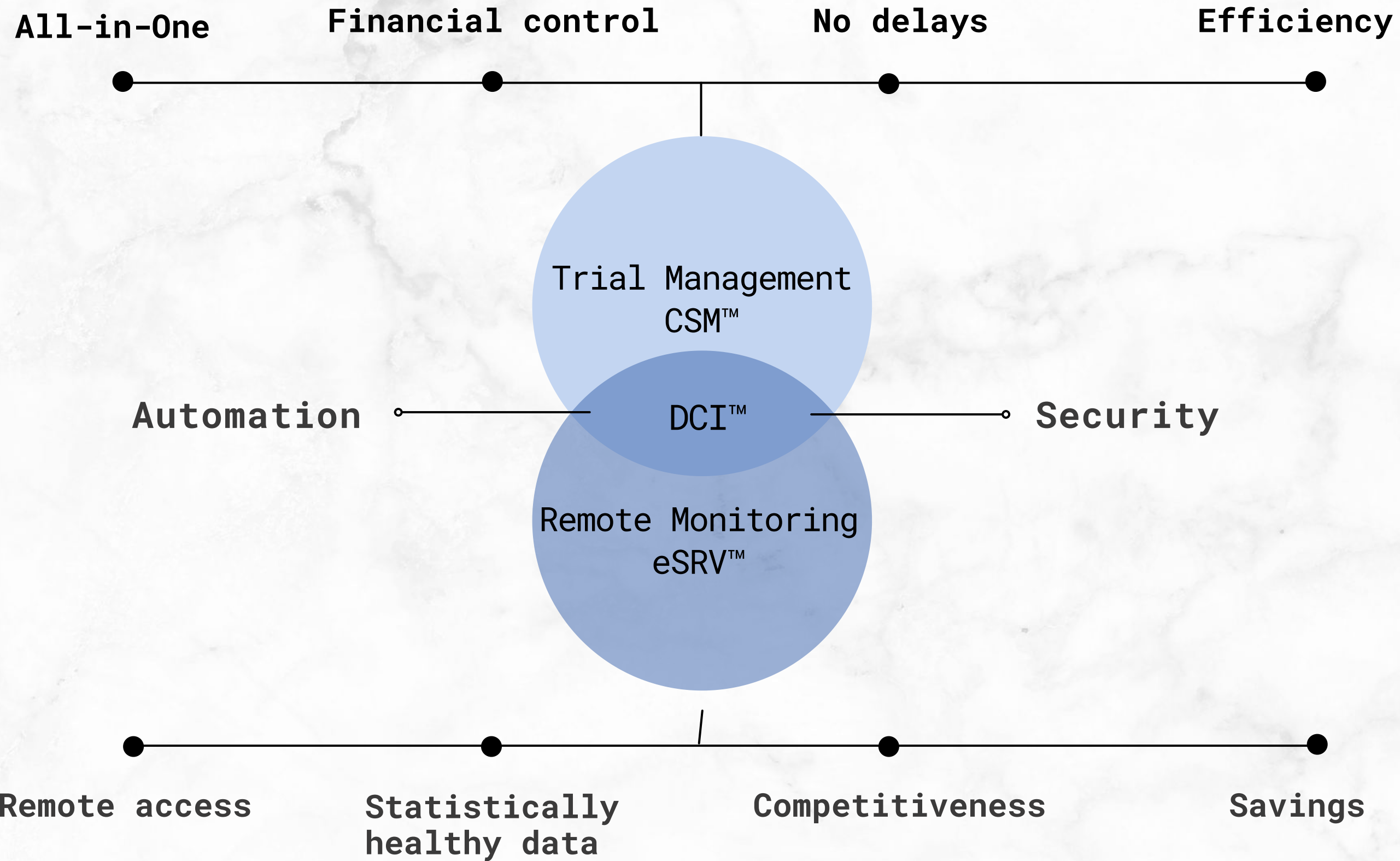


— Data Communication
Integrator™
[MCR DCI™]



Combined functionalities

MCRCLINIC



Sample EDC systems (Electronic Data Capture)



Industry leader
in the USA



OC Unite enables
integration with EHR



Investment by WESTtech
Ventures, Berlin

EDC integration with EHR (eSource)



MCR collects data
from EHR, provides
remote monitoring
& exports to EDC



Archer transfers data
from EHR to EDC



The B2B medical
interoperable
platform

Closed Ecosystems
(current practice)

Health Data Exchange
& Re-Use (new standard)

Safety of MCR Clinic systems

1

HL7 FHIR Standard

Fast Healthcare
Interoperable
Resource

2

Microsoft Azure Cloud

exchange and
storage of data
@FHIR database

3

GDPR

General Data
Protection
Regulation

4

FDA 21 CFR Part 11

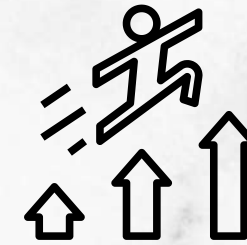
requirements
for conducting
clinical trials

Development Plan



PILOTING

Launching pilots on ongoing clinical trials (*#shadowmonitoring*)



FUNDRAISE

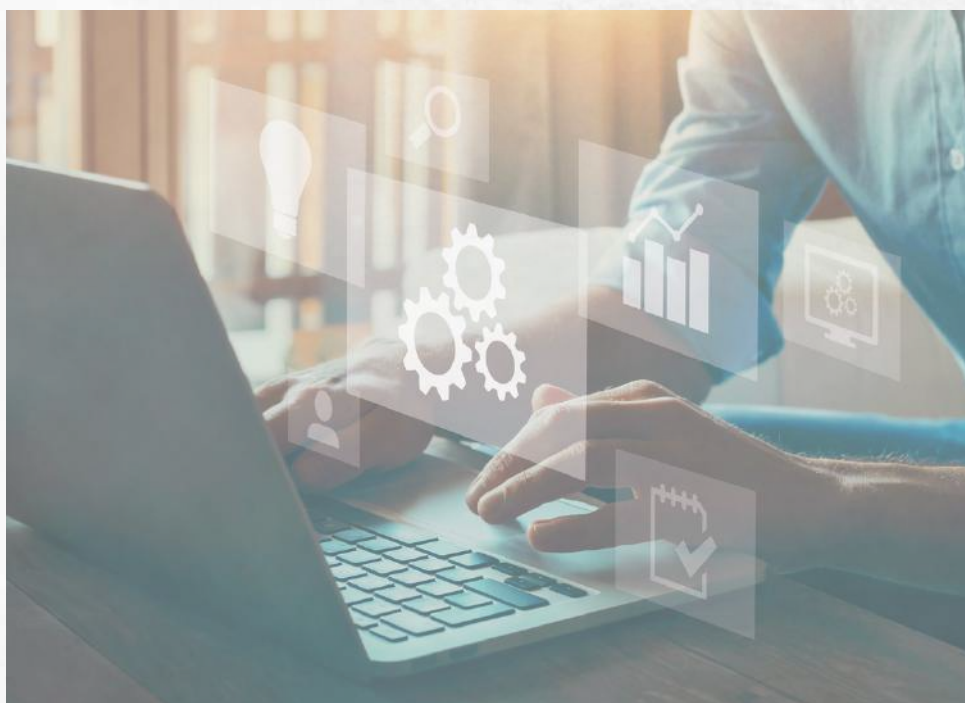
Reaching top-tier investors in digital health



CAMPAIGN

Introducing EHR vendors on data re-use in clinical trials

Clear Pricing Model



Remote auto-monitoring
of clinical trial:
per trial/site/month



One-time fee
(trial start-up):
per trial
participant

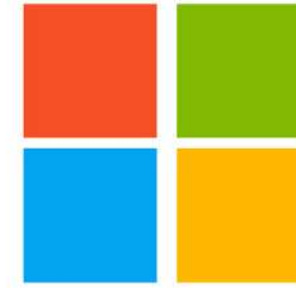


One-time fee
(archive access):
per trial
participant

Milestones



Microsoft



MICROSOFT FOR STARTUPS

MCR qualified for the Founders Hub, received support for Azure medical cloud and benefits



FOUNDA HEALTH

MCR established technology partnership with Founda Health in Europe and USA



JANSSEN

Business Partner Risk Assessment by Information Security & Risk Management Commercial Corporate R&D|EMEA



**Anna Urban-
Marcinkiewicz**
Sales & Marketing



Paulina Roś
Finance and R&D



**Władysław
Halbersztadt**
Technology
& Data



Anna Urban-Marcinkiewicz
789-266-610
a.marcinkiewicz@mcr.clinic



Web_page
info@mcr.clinic



LinkedIn



Twitter

#AutoDigitCT

