



# TECNOAMBIENTE

A TRADEBE COMPANY

*Enabling sustainable progress*

**PROVIDING INTEGRATED ENVIRONMENTAL,  
SURVEY AND INSPECTION SOLUTIONS**

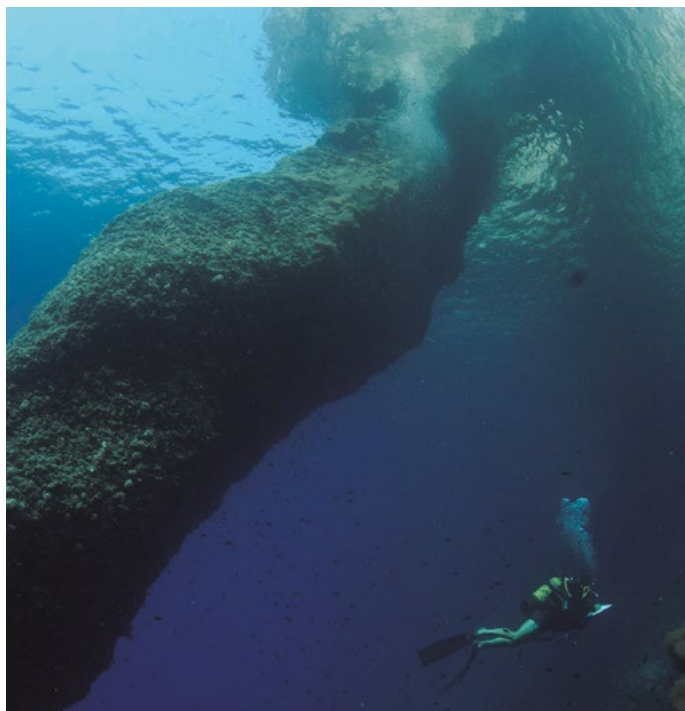
*Globally. Offshore & Nearshore. On shore. In our own Labs.*

**OIL & GAS**



# TECNOAMBIENTE

A TRADEBE COMPANY






At Tecnoambiente we are specialized in providing solutions in the marine environment. Over 2,000 projects performed in nearshore and offshore areas endorse our experience since 1980.

Our scope is global, as we provide services all around the world, helping our clients to find the best solutions to their needs and to develop their activities in a sustainable manner.

We have a team of 100+ professionals comprising consultants and surveyors highly qualified, capable of providing integrated solutions to any challenge. We perform marine survey field works as well as all the required environmental studies.

Tecnoambiente belongs to the Tradebe group, who is a leading international company in the environmental services sector, with presence in Europe, the US and the Middle East.

## GLOBAL SCOPE

Locations   
Projects   
Key Offshore Projects 

### REPSOL - Canary Islands

Marine Baseline Study for exploration drilling in Canary Islands. According WB Guidelines.

### INVEMAR - Colombia

EBS and Site survey and deep coral reefs identification in Camuro Block (Colombia). According WB Guidelines.

### PACIFIC ENERGY - Peru

Site survey for Oil Rig platforms installation: Delfin and Piedra Redonda in Tumbes (Peru).

### WORLEY - Libia

Environmental Baseline Survey (EBS) for Bahr Essalam Phase II Development Project. According WB Guidelines.

### ENI (ESL Consulting) - Ghana

Environmental Baseline Survey and Environmental Monitoring Program for Oil Field Development OCTP (Offshore Cape Tree Point) in Ghana. Phase I & Phase II.

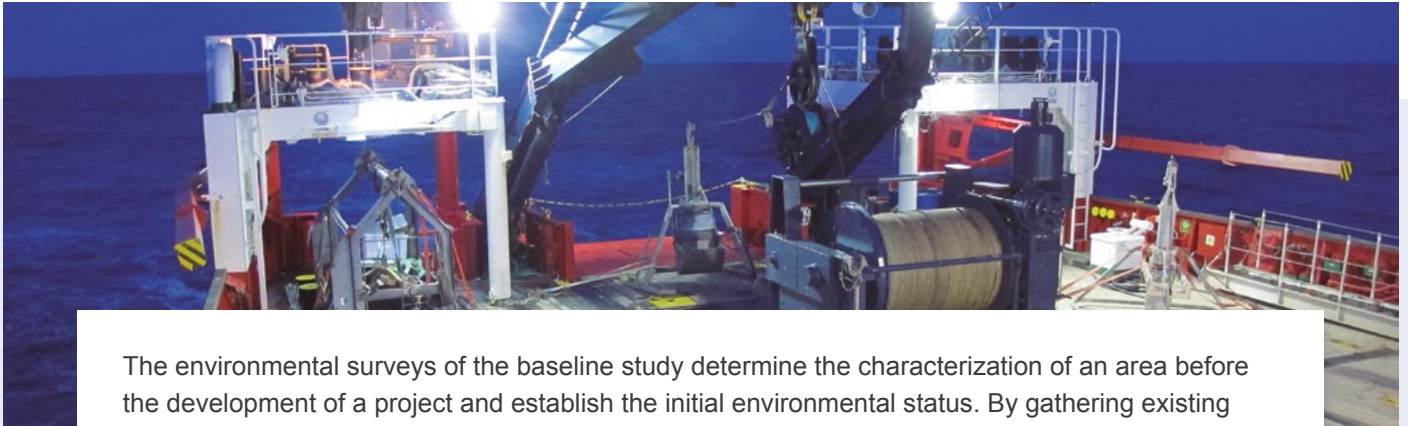
### WORLEY - Uruguay

Seabed and Environmental Baseline Survey along Uruguay Economic Exclusive Zone (EEZ). According WB Guidelines.

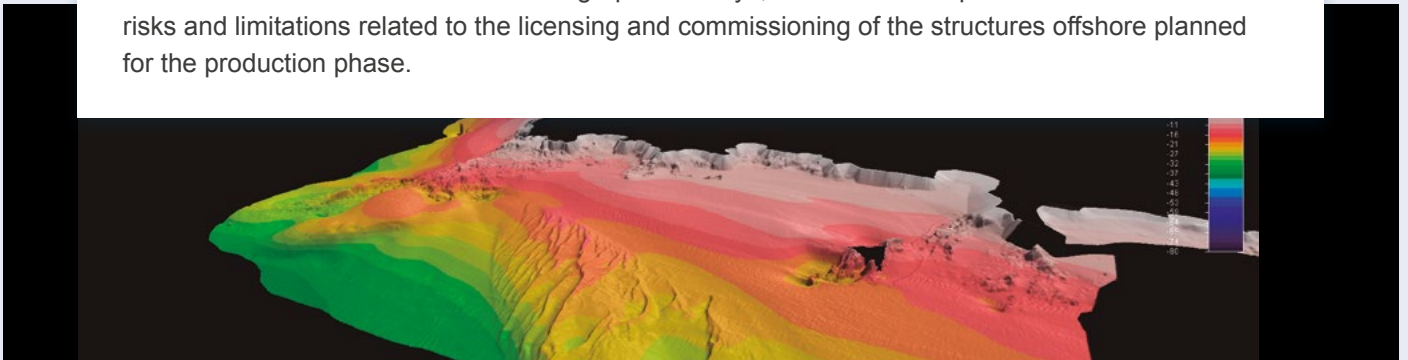




## DESKTOP STUDIES AND BASELINE SURVEYS FOR PERMITTING AND BLOCK LICENSING



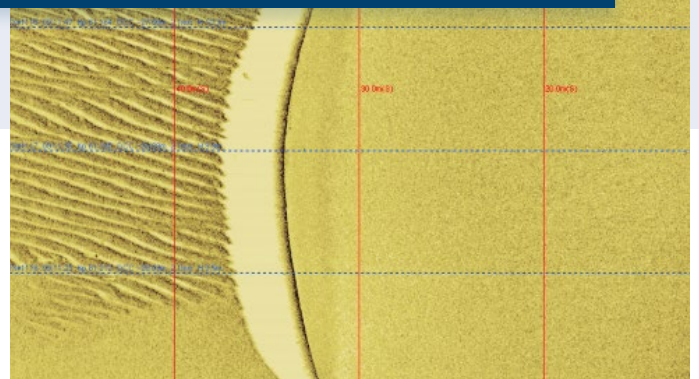
The environmental surveys of the baseline study determine the characterization of an area before the development of a project and establish the initial environmental status. By gathering existing data from different sources and oceanographic surveys, Tecnoambiente provides an overview of risks and limitations related to the licensing and commissioning of the structures offshore planned for the production phase.



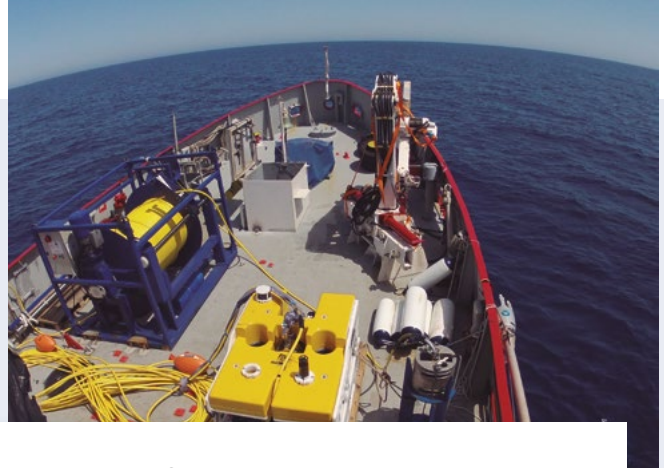
## ENVIRONMENTAL IMPACT ASSESSMENT AND ENGINEERING SITE SURVEYS

Tecnambiente provides EIA, pre-engineering surveys for engineering and design phases in the development of the project in nearshore and offshore areas, including:

- ~ Environmental, geophysical surveys for pipelines and production assets.
- ~ Detailed geotechnical studies of pipeline routes and infrastructures (buoys anchors, PLEM/PLET, jack-up spud-can analysis etc.).
- ~ Seismic surveys for geological hazards, surface gas detection, etc.
- ~ High-resolution bathymetry surveys with ROTV for pipelines.

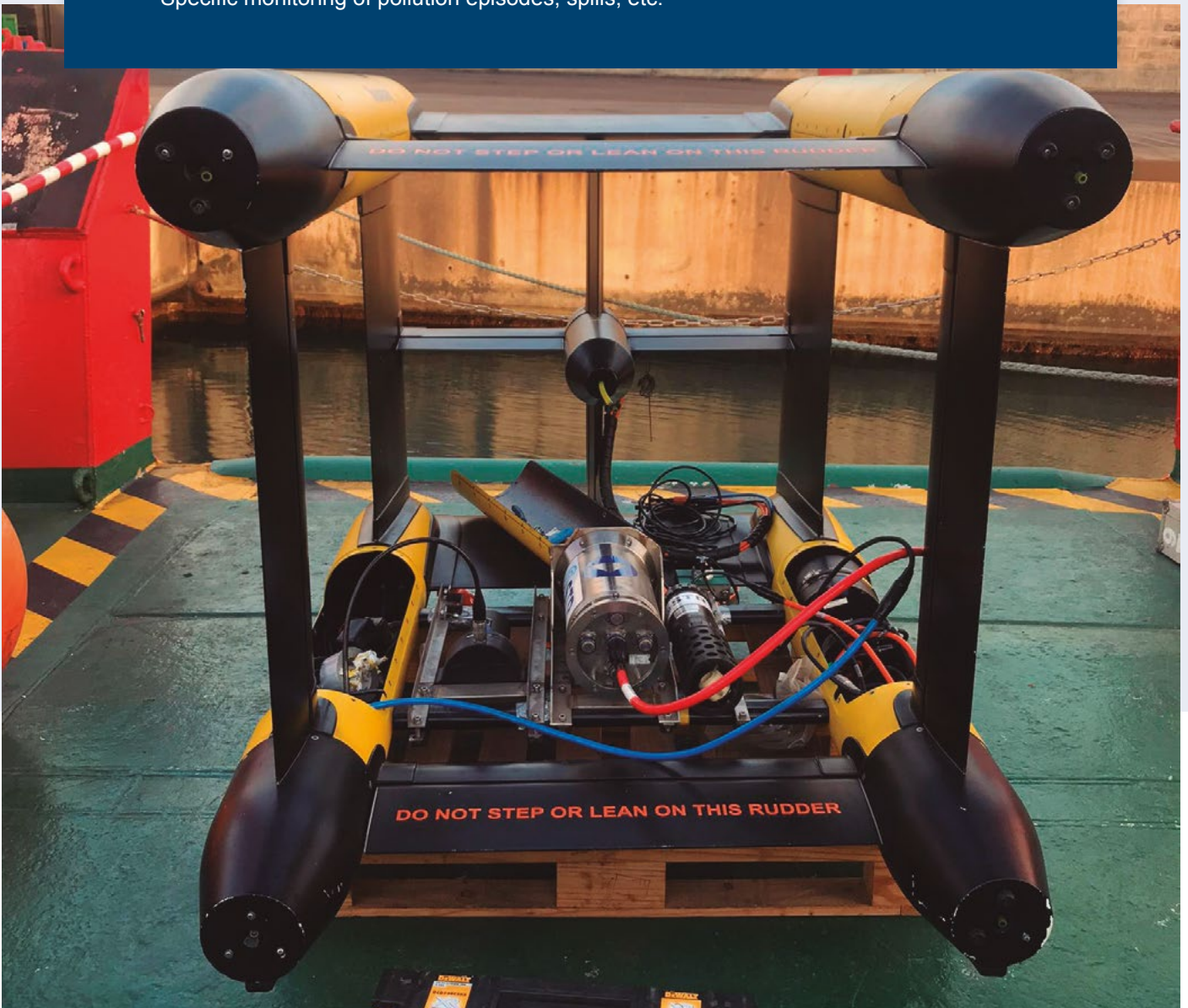






The integrity of the subsea assets is one of the main concerns of Tecnoambiente's clients. We can provide:

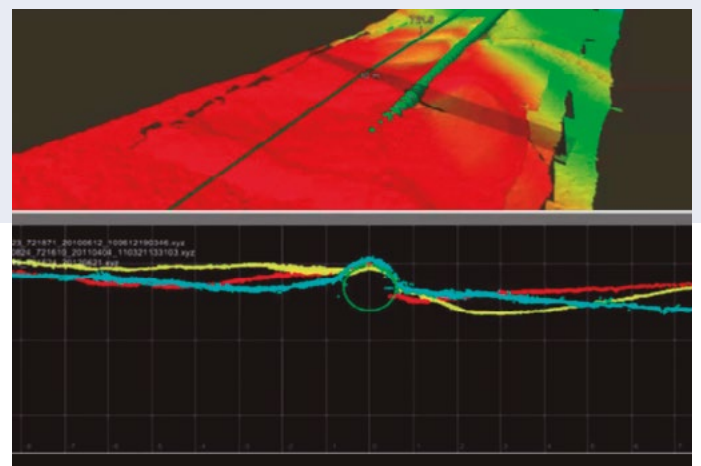
- ~ USBL positioning services, inspection of subsea assets by divers, ROTV, ROV or AUV, collecting high-resolution data or underwater images.
- ~ Support for drilling contractors in the selection of optimal areas for platforms anchoring tests.
- ~ Specific monitoring of pollution episodes, spills, etc.







Tecnoambiente provides consulting and offshore services for the environmental monitoring of decommissioning and dismantling tasks, including the preparation of EIA updates, EMPs during operations etc.





## Spain

### **Catalonia (Headquarters)**

Rda. Can Fatjó, 19 B, Parc Tecnològic del Vallès  
08290 Cerdanyola del Vallès (Barcelona)  
T. +34 93 594 20 36  
F. +34 93 594 21 53  
[info@tecnoambiente.com](mailto:info@tecnoambiente.com)

### **Catalonia (Laboratory)**

C/ Indústria, 550 - 552  
08918 Badalona (Barcelona)  
T. +34 93 387 80 80  
F. +34 93 387 80 39  
[tecnoambiente@tecnoambiente.com](mailto:tecnoambiente@tecnoambiente.com)

### **Andalusia**

C/ Newton, 15 E, Parque empresarial  
11407 Jerez de la Frontera (Cádiz)  
T. +34 956 30 24 86  
F. +34 956 31 01 39  
[delegacion.andalucia@tecnoambiente.com](mailto:delegacion.andalucia@tecnoambiente.com)

### **Aragon (Laboratory)**

C/ Sisallo, 22-24, Nave D-9, Pol. Empresarium  
50720 La Cartuja Zaragoza  
T. +34 976 13 26 33  
F. +34 976 13 26 48  
[delegacion.aragon@tecnoambiente.com](mailto:delegacion.aragon@tecnoambiente.com)

### **Canary Islands**

C/ Domingo J. Navarro, 48 bajo  
35002 Las Palmas de Gran Canaria  
T. +34 93 594 20 36  
F. +34 93 387 80 39  
[delegacion.canarias@tecnoambiente.com](mailto:delegacion.canarias@tecnoambiente.com)

### **Galicia**

C/ Galileo Galilei, 34, planta 1ª, puerta A  
15008 A Coruña  
T. +34 981 27 47 20  
F. +34 981 27 47 77  
[delegacion.galicia@tecnoambiente.com](mailto:delegacion.galicia@tecnoambiente.com)

## Peru

### **Lima**

Avda. Arequipa, 2450, Oficina 608  
Lince, LIMA  
T.+511 444 1238  
[sucursal.peru@tecnoambiente.com](mailto:sucursal.peru@tecnoambiente.com)

## Colombia

### **Bogotá**

C/ 90, 12 - 28, Oficina 24  
Chicó, Bogotá D.C.  
T. +571 6386894  
[sucursal.colombia@tecnoambiente.com](mailto:sucursal.colombia@tecnoambiente.com)



[tecnoambiente.com](http://tecnoambiente.com)



[company/tecnoambiente---tradebe](https://www.linkedin.com/company/tecnoambiente---tradebe)



[@Tecnoambiente\\_](https://twitter.com/Tecnoambiente_)