



EPSILON International Ltd
EPSILON Malta Ltd
 Prof. Marc Bonazountas
 Tower Business Center (#212)
 Swatar, Birkikara, BKR 4013 Malta
 Valletta VLT 1432, Malta
 Tel: +3565466047
 Mob: +306944354776
 Fax: +35699165606
central@epsilonmalta.com
www.epsilonmalta.com



Epsilon (Greece)
 Ms. Despina Kallidromitou
 Epsilon International SA
 Monemvasias 27
 GR-15125 Marousi, Greece
 ☎+30-210-6898622
 ☎+30-210-6842420
 ☎+30-694-4354776
central@epsilon.gr
www.epsilon.gr



Epsilon (Cyprus)
 Mr. Evelthon Iacovidis
 Epsilon Consulting, Ltd
 Triptole mou 11
 CY-1097 Nicosia, Cyprus
 ☎+357-2-2499569
 ☎+357-2-2677668
 ☎+357-9-9439141
info@epsilon.com.cy
www.epsilon-eu.eu



Aviontek (Germany)
 Mr. Klaus Metzger
 Friedrichshafener Str. 1
 82205 Gilching, Germany
 ☎+49-8105-7722229
 ☎+49-8105-772755
info@aviontek.com
www.aviontek.com



Epsilon (Italy)
 Mr. Giacomo Martirano
 EPSILON Italia srl
 C.da Pasquali 79
 I-87040 Mendicino, Italy
 ☎+39-0984631949
 ☎+39-0984631767
 ☎+39-3494433577
g.martirano@epsilon-italia.it
www.epsilon-italia.it



Epsilon/Aberon (Bulgaria)
 Ms Cveta Dimitrova
 Executive Director
 Han Asparough 45
 1000 Sofia, Bulgaria
 ☎+359-2-8526675
 ☎+359-2-9879976
 ☎+359 88-8354415
ctd@epsilon-bulgaria.com
john.ayerst@epsilon-bulgaria.com
www.epsilon-bulgaria.com



Epsilon (Russia)
 Dr. Ludmila Chernenkaya
 Epsilon-GTSP Corp. (1990-2000)
 Polytechnicheskaya Street 29
 195251 St.Petersburg, Russia
 ☎+7-812-5527640
 ☎+7-812-5527563
ludmila@mv.stu.neva.ru
www.epsilon-eu.eu

EPSILON is a Technology Resources Engineering, Consulting, and RTD International Group engaged in: *Geoinformatics, Aerosystems, Maritime, Environment & Water, Energy, Homeland Security, Natural Disasters, and Economics & Management.*

EPSILON was established in 1985 in Boston, Massachusetts, USA. Today it operates world-wide as a Group of legally independent companies with key Offices in Greece (photo), Malta, Bulgaria, Cyprus, Germany, Italy, and allied offices in most European countries, and well-built links with foremost world technology organizations. EPSILON delivers engineering & consulting services, outsourcing & R&D commodities, training, and state-of-technology products as geospatial database infrastructures and up-to-the-minute navigation & environment technologies.



Geoinformatics

Services for the entire spectrum of SDI/GIS/IST technologies as geodata capture, geo-statistics for INSPIRE/OGC geo-databases, geo-systems integration, geo-marketing products via IST/ICT technologies:

- **Video mapping:** Terrestrial and mobile video mapping, LIDAR, space lasers, remote sensing, aerial mapping and high resolution imaging & processing for its applications, ranging from environmental management to security and safety systems, to global monitoring, to a full range of surveying technologies, and industry applications as health systems, and marine vessels tracking (photo).
- **Geodatabases:** All types of geodatabases based on ESRI technologies, for land- water, air, sea/marine, ecosystems/nature, health, utilities, transport and multiple sectors, based on INSPIRE, OGC, ISO and other standardization systems.
- **GIS & remote sensing:** Application via web-technologies for nature, earth observations, 3D-cities, remote sensing for territorial control, environment monitoring, management of natural and anthropogenic resources, customise apps, based on SDI compliant to the INSPIRE Directive
- **Applications:** Development of Geodatabases, web-GIS, IST/ICT systems on state-of-technology or GRID computational systems for natural resources & environment management, water resources, disasters, transportation, geotechnics, geology, civil engineering CAD/CAM/GIS systems, health, e-cities, e-government, and info-society and information communication sectors, for any type of IST/ICT/SDI demands.
- **Products & apps:** for air-, land-, marine-navigation, fleet management, vehicles and vessels tracking, non-ILS aircraft landing, health systems, iPad and Android applications of LBS, environment and forest fires management platforms, civil protection CCC (control command centre) and other.



Aerosystems

Offered expertise in space- aviation- avionics- mobile- wifi- & satellite telecoms by using state-of-the-art geoinformatics, earth observation & remote sensing for aerospace- aviation- products and earth resources planning; services supported by our allied company [Aviontek GmbH](http://www.aviontek.com).

Delivers expertise in engineering & consulting, modelling, R&D, data-bases, products development, aviation apps, training and wide capacity of solutions to agencies, organizations, airports-aerodromes and aviation authorities, and aircraft certification consulting:

- **3D-aerodrome geodatabases:** 3D-aviation navigation aids (h/w, o/s, s/w, data); aerodrome-SDIs based on ARINC and commercially available technologies; Turn-key systems based on space components as satcom, navigation (photo) and earth observation. Experience with object oriented programming languages (C++, Java, C#, IDL), Procedural Programming languages (C, FORTRAN 77/90/95, Pascal), Libraries (OpenGL, Qt, MFC, .NET), Script Languages (Perl, Tcl/Tk), Document standards (XML, XSL, XHTML), Geodatabases (Oracle, mySql).
- **Aviation Applications:** Google Earth™, MS Virtual Earth™, and ESRI ArcGlobe™ and Aeronautical Solution™ technologies, as supported by terrestrial satellite and web-technologies.
- **Design of microwave systems:** Components for space and ground applications; Development of numerical electromagnetic models and software tools for the design of microwave systems and components, also via [Epsilon-Italia, srl](http://Epsilon-Italia.srl).
- **Aircraft certification:** Experience in turbojet, turboprop and seaplanes aircraft programs via [Aviontek GmbH](http://AviontekGmbH) and Epsilon-Bulgaria doo
- **Management of agreements:** Technical operational services for operator-providers; support for marketing and pre- & post-sale technical assistance to the customers.
- **Project facilitation:** For civil, military, cargo operations, passenger operations, and airports, civil protection & security, environment, Consulting for Seaplane operations; and other for the General Aviation.



Homeland Security & Natural Disasters

As part of its GeoInformatics and Environment activities, EPSILON has been active in HLS since 1997 and our diverse group of engineers, scientists and policy makers provide consultancy and technical services in the fields:

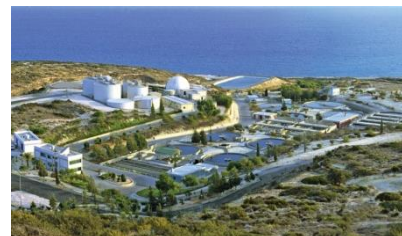
- **Homeland Security technologies** covering a broad spectrum of applications such as Navigation, Surveillance, Mapping/Monitoring and early-warning via various platforms (UAV/UAS/UGV/UMV);
- **National Risk Assessment and Risk Management Plans & Mapping**, and among them disaster recognition and assessment, prevention & preparedness strategies, risk analyses and risk mapping;
- **Critical Infrastructures/Networks Patrolling and Monitoring**, as for example Energy (PPs, HPPs), Industrial Base, Health, Water (Dams, WTP), IT, Ports, Airports, Government Facilities and linear networks (gas, oil, water, transport, telecoms);
- **Natural Disaster Assessments and Mapping**, such as geohazards (earthquake, volcano, landslide, ground movement), forest fires (FF), flash-floods, extreme weather, tsunamis, industrial accidents;
- **Mathematical Modelling and Assessments** of natural phenomena, critical infrastructures performance as gas flows, single risk and multi risk natural disasters and emergency management;
- **Research & Development** on HLS technologies, including modelling, business continuity following natural disasters, media modelling and UAV/UxV technologies;
- **Geo-applications** for civil protection and HLS;



- **Forest Fire Management/Prevention Turn-key Systems**, as for example automated fuel mapping, forestry sensors monitoring, fire alert and ignition estimation, for propagation and integrated forest fire management, including civil evacuation; (Photo)
- **Environmental risks monitoring** and development of field monitoring telematics system, including UAV/UAS technologies coupled to sensors and Geoinformation technologies.

Water & Environment

EPSILON covers the entire spectrum of civil-, water-, wastewater-, waste-, environment-, nature- in sciences & engineering services as: climatology, hydrology, hydrogeology, water resources, water supply, water uses, wastewater & wastewater treatment (photo, CY), irrigation & drainage systems, marine & coastal waters, waste, EIAs, SEA, SCP, LCA, environmental monitoring (water quality, groundwater, surface water, soil, bio-monitoring), wetlands- ecosystems- and NATURA 2000 management plans, biodiversity analyses, coastal zone management, statistics, INSPIRE enviro-info systems (SEIS, EIONET), geoSDI, mathematical modelling (all media), public health, enviro-law and regulations, EU Directives, envirometrics, enviro-policy & sustainability, training and environmental awareness:



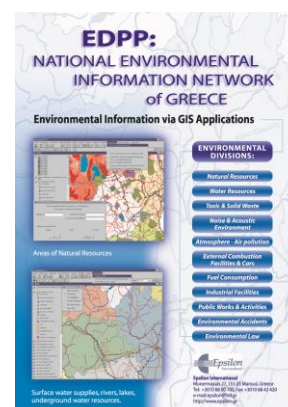
- **Water resources:** Basin & catchment management, climatology, hydrology, water forecasting, erosion & sedimentation, floods, groundwater, EU WFD 2000/60, limnology & lake sciences, reservoir optimization & management, river & coastal sedimentation, delta, estuary, basin storm water management, urban water management, water supply & demand, social & economics, water quantity, resources systems optimisation, Law and Directives.

- **Water & wastewater engineering:** Irrigation, drainage, aqueduct, water tunnelling, water supply, distribution & pipeline engineering, dam, reservoir, hydropower engineering, desalination & water purification, drainage engineering, flood control mitigation systems, water works, pipeline engineering, water distribution, river engineering, storm & urban water systems, transport hydro-systems, wastewater and treatment, water reclamation and reuse, sewerage systems, CAD/CAM/GIS/SCADA engineering.



- **Waste:** Engineering design, solid waste technologies, sustainable consumption production (SCP), underground storage tanks, urban waste (planning, collection, treatment, reuse, landfills, technologies, management plans, monitoring), waste and hazardous waste management, waste recycling & recovery, laws & Directives, RTD.

- **Nature:** NATURA 2000 plans (photo, 2013), biotopes, wetlands, ecosystems modelling & risks, emergency management, flora, fauna, forestry management, mapping & classification systems, silviculture and fisheries sustainability, geochemical cycles, CORINE Landcover & soil resources mapping, wetlands-health, EnviroLaw, Directives, web-mapping, public dissemination and policy.



- **Policy:** Analyses of change, C/B analyses, economics hygiene and safety plans, economics of impacted environmental media (air, water, soil, nature), economics of public health & risk assessments, environmental regional and local economic analyses, EIA/EIS/SEA, legal and regulatory support of agencies and organisations, training in ISO, EMAS, awareness raising and organisation of public hearings, drafting of regulations, laws, acts, environmental audit and compliance plans, policy analyses, public-industrial policy, risk analyses & quantification.

- **Operational tools:** GIS & webGIS technology (photo), remote sensing facility, CAD/AFM s/w, mathematical models, chemical associated laboratory for environmental analyses (air, soil, water, marine, bio), envirometrics database, INSPIRE technology, OR models for decision making, visualization systems, wifi real time data analysis and telemetric installations, forest fire cameras and wifi systems, environmental aquis & legislation database.

Marine & Maritime

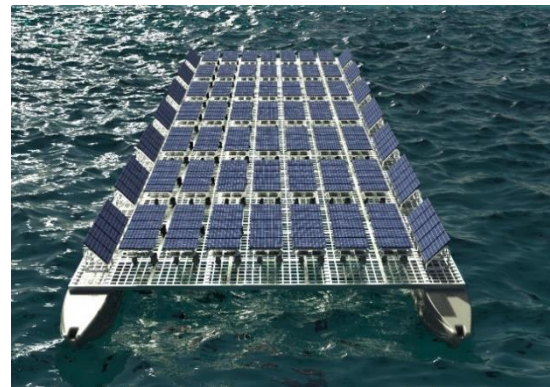
Committed to sustainable practices and maritime innovation, EPSILON utilizes EU funding to support a diverse range of projects that include: Maritime strategy and market analyses; LCA and DSS for shipbuilding and shipyards; public health in ships; ship navigation in the context of sustainable blue economy; assessments modeling, marine databases; Shipping finance and investment, Maritime regulations and compliance; Bunkering, port and terminal issues; Shipping operations and logistics optimization including Maritime safety and risk management, Maritime technology and innovation, ENC's production for Navigation; Environmental sustainability and compliance as of IMO, MARPOL, SOLAS regulations; Maritime security and piracy prevention via edge CubeSat technology; Specifications for defense vessels construction, science and technology for Autonomous Underwater Vehicles (AUVs), Maritime workforce development and training in association with universities and RTD centres.



<https://shippingsaas.eu/>

Energy

Our experts offer a wide range of expertise, guidance, and solutions to clients in Energy technologies as: Renewable energy development (wind, solar, ocean, other), Energy efficiency & conservation, Electricity modernization & smart infrastructure, Energy storage & grid integration via GIS technology, Fossil fuel exploration, production, and optimization, Carbon management & emissions reduction, Energy transition & decarbonization, Energy risk management and resilience, Energy infrastructure planning and development, Energy market design and restructuring, Energy finance and investment, Energy data analytics and digital transformation, Energy transition workforce development, Energy supply chain management, Energy sector resilience and security, Energy policy and regulations, Energy market analysis and forecasting, Community engagement and social impact assessment, RTD and mathematical modeling (Figure, in Coop with the NTUA)



Economics & Management

Offered expertise and R&D in: economic- administrative- and technical parts of complex projects, techno-economics, market research, business planning, laws & regulations, technical assistance & research studies in business & geo-information statistics (photo), business planning and strategy formulation, engineering impact analyses, feasibility studies, market research in the fields of GIS- informatics- water- environment- - transport- aviation- statistics- (photo) marketing- space- telecoms-, viability & sustainability analyses for business portals, regional & environmental economics:



- **Business planning:** Analysis of any existing or future competition, Business financial position and any funding requirements, Business marketing strategy, Business ownership and management, Business target market, Operational details, such as location, premises, governing legislation, and personnel requirements etc.
- **Market research:** Acting & defining execution of strategies and practical implementation for innovation and renewal by applying state-of-the-art research and management methods as well as tools; Analysis & understanding of why and how innovations, technical and scientific information and knowledge interact with market and economic forces, Lead, interact and communicate with qualified professionals inside and outside the Epsilon Group and/or their own knowledge field; Solving problems related to innovation and renewal activities involving technological, economic, organizational, and institutional change.

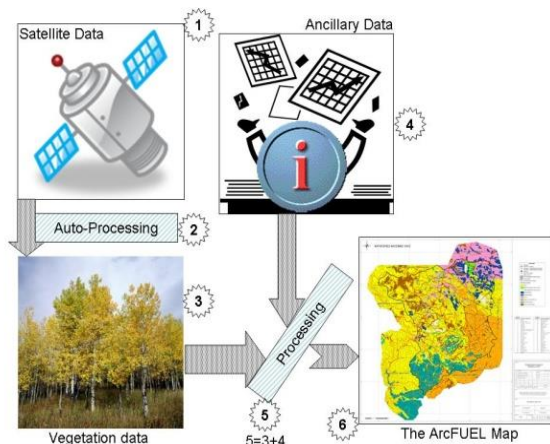
- **Project management:** Administration systems public & private, industry business management plans [via Epsilon Consulting Ltd, CY], business & profitability plans, engineering project management, economics & viability strategies, EC & international policy, economics & impacts of development, educational material for training, legal services, ISO- EMAS certification, legal environmental database (EnviroLaw™), modelling of economic and social impacts, operations research optimisation, Permitting programmes, Quality Assurance, ISO, EMAS plans, Socio-economic policies, Statistics and statistical indicators, Tender and procurement documentation, Tender documents and procurements, Tourism & industry social and economic impacts



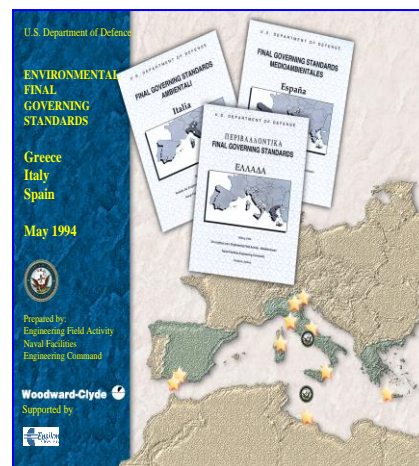
Aerospace: 3D-Pilot Navigation system (2014)



GeoInformatics: 3D-City/Island (iPad, 2014)



Environment: Forest Fuel Mapping (2014)



Management: EnviroLaws (EU vs. USA, 2014)



DOMINANT SECTORS (1985-2023)

SINCE 1990: 300+ PROJECTS & 100+ EC/RTD



engineering



WATER



ENVIRONMENT & WATER



Science



AEROSYSTEMS



GEOINFORMATICS



research



MARINE



MANAGEMENT



CONSULTING



RTD



products



BUILDING CAPACITY



Outsourcing



MARITIME