

**Humanihut®**  
RIGID REDEPLOYABLE INFRASTRUCTURE



[www.humanihut.com](http://www.humanihut.com)

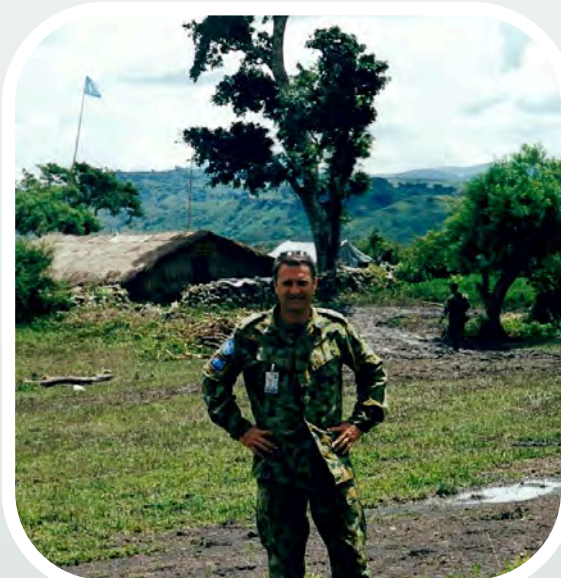


[sales@humanihut.com](mailto:sales@humanihut.com)



## Who we are.

Neale Sutton is the founder and Managing Director of Humanihut, the innovative temporary accommodation concept that has applications for the global refugee crisis and other areas too, including disaster relief, emergency management, mining, construction, and defence. The catalyst for Humanihut came from Neale's experience in 1999-2000 in East Timor, where he was deployed as a Military Observer to the UN Transitional Authority that was controlling the repatriation of refugees from West to East Timor. During this period, he witnessed approximately 3,500 people per day being repatriated in columns of open trucks across a border that was just a Bailey bridge and a custom's hut.



Neale's time in East Timor was where the Humanihut seed was planted, but it was not until 2013-14 that the concept really developed, this time via another humanitarian crisis as tens of thousands of refugees of the Syrian War crossed into Jordan and Lebanon. It was the news footage of people being housed in poor quality tents and sheds with dirt floors, that triggered Neale to start to consider in greater detail about the need for a superior form of temporary accommodation; something that could be rapidly deployed to provide shelter, comfort, cleanliness, security, and dignity for people in need.

## Why Humanihut?

The Humanihut Field Infrastructure System (HFIS) was designed as a solution to humanitarian crisis through the delivery of an entire temporary infrastructure system which incorporates accommodation, clean drinking water, sewerage management and power generation. Humanihut now supplies temporary infrastructure to the global humanitarian, defence, emergency management and construction industries.



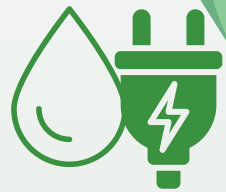
Worldwide  
deployment



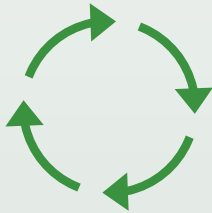
Scalable



Climate  
controlled



Power, water &  
waste fittings  
included



Re-deployable



20+ year lifespan



Minimal environmental  
impact.



## Our leadership.



### **Kevin Scarce AC CSC RAN (Rtd) Chairperson**

Rear Admiral the Honourable Kevin Scarce AC CSC RAN (Rtd) served in the Royal Australian Navy from 1968, retiring in 2004. His appointments included service on HMAS Sydney during the Vietnam War, postings in Washington and London, Commanding Officer of HMAS Cerberus and Flag appointments as Naval Training and Naval Support Commander. On 8th August 2007, Kevin was sworn in as the 34th Governor of South Australia, serving more than 7 years in the role. Kevin joined the Board of Humanihut in the role of Chair in 2017.

Kevin was awarded: the Conspicuous Service Cross in 1994 and was appointed an Officer in the Military Division of the Order of Australia in 2004, the Knight of Grace in the Venerable Order of Saint John in 2007 and a Companion of the Order of Australia in 2008.

### **Neale Sutton Founder and Group Managing Director**

Neale Sutton is the co-founder and Managing Director of Humanihut.

Neale was educated at Melbourne High School after which he graduated as a 2nd lieutenant into the Australian Army. In 1999 Neale was deployed to East Timor with the Australian Army and later the United Nations and after a lengthy 37-years of service, Neale retired at the rank of Colonel.

Neale visited 52 countries as an advisor for Minelab International on the eradication of mines and unexploded ordnance and has held various executive level positions in government. Neale holds a Master of Professional Management.





## Our management team.



Stephen Dubrich  
Chief Operating Officer



Glenn Powell  
Chief Technical Officer



Jodi Graf  
General Manager Corporate Services



Brad Erickson  
General Manager Field Operations



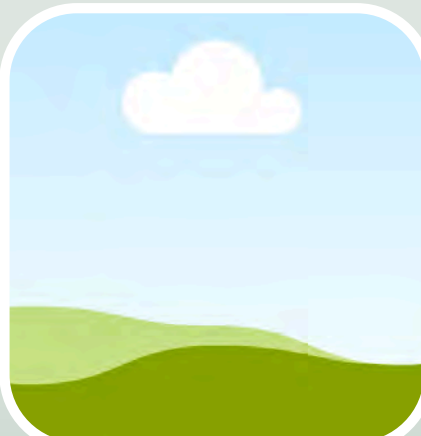
Greg Johns  
General Manager Manufacturing



Ian Lynch  
Government & Australian Strategic  
Partnerships EGM



Brendan Tucker  
Regional Manager  
Humanihut UK Ltd



Ben Jensen  
Regional Manager KSA

## Our values.

### Collaboration is our culture.

We achieve more through collaboration and leveraging the collective genius.



### Accountability drives us.

We keep promises and accept full responsibility for our decisions, actions, and results. Customer interactions are delivered with care and diligence. We are driven to develop environmentally sustainable solutions.



### Respect is our compass.

We aim to deliver honesty and integrity in every interaction and recognise that the thoughts, feelings, and backgrounds of others are as important as our own. We support and care for the communities we work and live in.



### Excellence every day.

This is the rule not the exception. We embrace new ways of thinking and doing, and attention to detail is at the forefront of all we do.



### Striving for improvement is our passion.

Innovation sparks creativity and growth and we push past the status quo with new and progressive ideas. Our client's needs are at the centre of our product and service development.





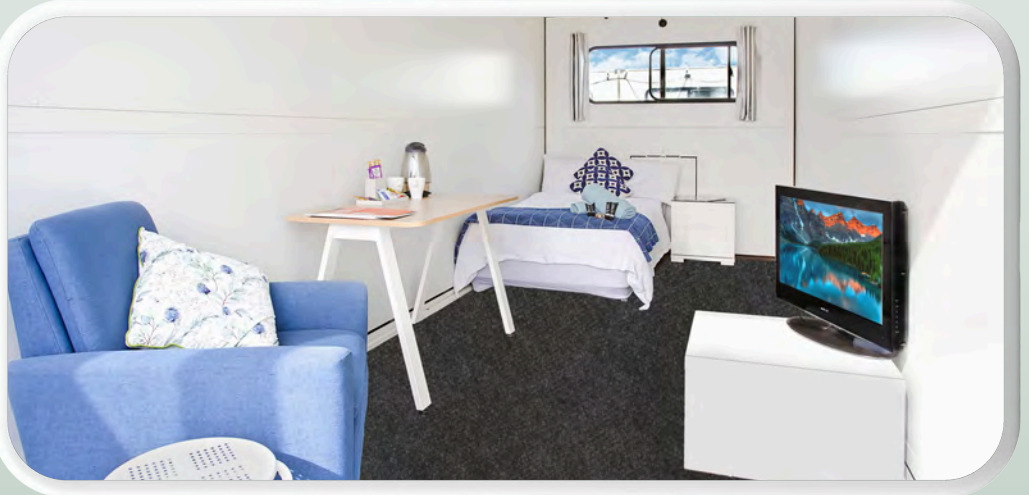
## Our experience.

Humanihut is contracted by Viterro Australia to provide worker accommodation villages in regional areas throughout South Australia.



Each accommodation unit is furnished with a bed, table, TV, personal storage & chair.

Communal bathrooms & kitchen facilities are provided on site & connected to local mains water, power, & waste-water infrastructure if available. All facilities can run independently if services are not available, creating a temporary, liveable community.



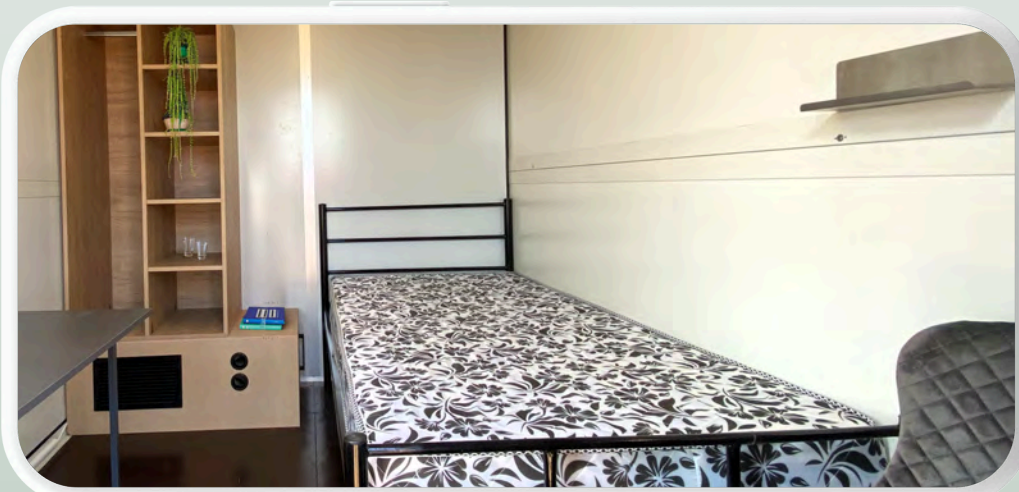
## Our experience.

Humanihut was contracted by NEOM DNC to provide an accommodation hub for construction staff. The Humanihut Field Infrastructure System is redefining the standard of accommodation for construction staff in the KSA.

Located near the NEOM Bay International Airport, the accommodation hub provides reverse-cycle air conditioned single occupancy rooms for construction staff managed by Humanihut with 24/7 turn-key facilities support.



The accommodation hub incorporates kitchen, laundry, and bathroom facilities, establishing an "away from home community" for workers.



Our traditional Huts were reconfigured to create separate accommodation spaces within, including independent entry/exit for each occupant.



## Our experience.

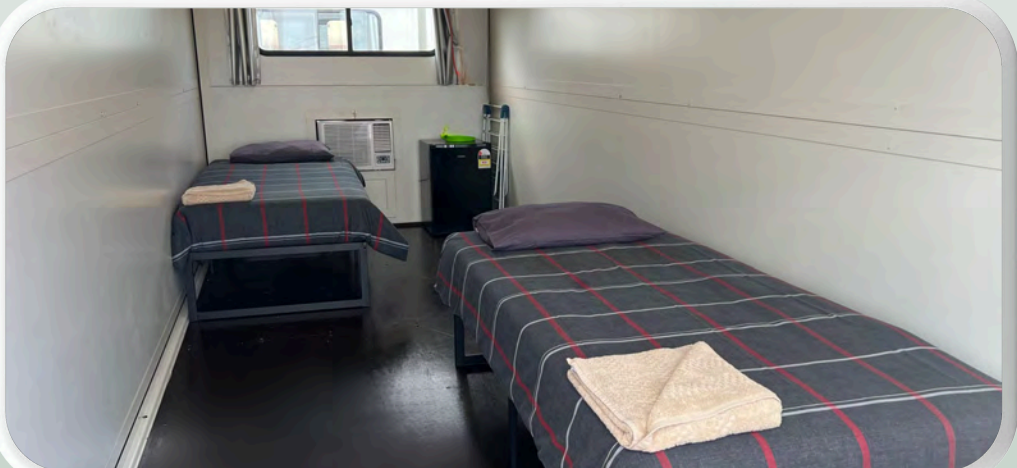
Humanihut was contracted by the Government of Western Australia to provide temporary accommodation hubs for indigenous communities displaced by recent flooding



Community hubs were established in the remote Kimberley region of Western Australia, close to the original community sites, while the rebuild work was to be undertaken.

Each community hub was equipped with bathroom, laundry, & kitchen facilities.

Accommodation units are all reverse-cycle air conditioned & feature double glazed windows, door locks, electricity & curtains. Rooms are furnished simply at the request of the community.





## Our experience.

In October 2023, the Australian Government's National Emergency Management Agency (NEMA) purchased a stockpile of emergency shelter camps from Humanihut as a key component of the National Emergency Management Stockpile (NEMS).



NEMA contracted Humanihut to supply, manage, maintain, and deploy six camps consisting of a total of 176 huts, 33 bathrooms, 6 accessible bathrooms with laundries, and all power, water, and wastewater infrastructure.



Humanihut maintain and rapidly deploy the stockpile on behalf of NEMA.





## Our experience.

In January 2024, Tropical Cyclone Jasper caused wide scale destruction throughout Far North Queensland. Responding to a call for assistance from the Queensland Government, NEMA deployed Humanihut.

The roads to Queensland were considerably damaged due to the flooding, making river crossings into the town unpassable for heavy vehicles. The Basecamp was transported the 'last mile' to the town of Ayton using civilian and military barges.



Despite challenges at the location, with many sites impacted and still damp from the cyclone, Humanihut was able to work with NEMA and local authorities to identify a suitable deployment location.



The Basecamp was successfully deployed, housing emergency responders from Disaster Relief Australia (DRA) and the Queensland Reconstruction Authority (QRA).



## Our experience.

The Humanihut Field Infrastructure System was deployed by the South Australian State Emergency Service to Kangaroo Island during the Black Summer Bushfire disaster that swept across Australia 2019/2020.

A 256 person Basecamp was deployed by road and ferry, and established on site and included power, water, and waste water management.



Fatigue management of emergency personnel was prevented with each hut climate controlled for comfort, insulated for environmental considerations and noise reduction, and able to be blacked out to enable night shift/day sleepers the opportunity for reasonable rest.

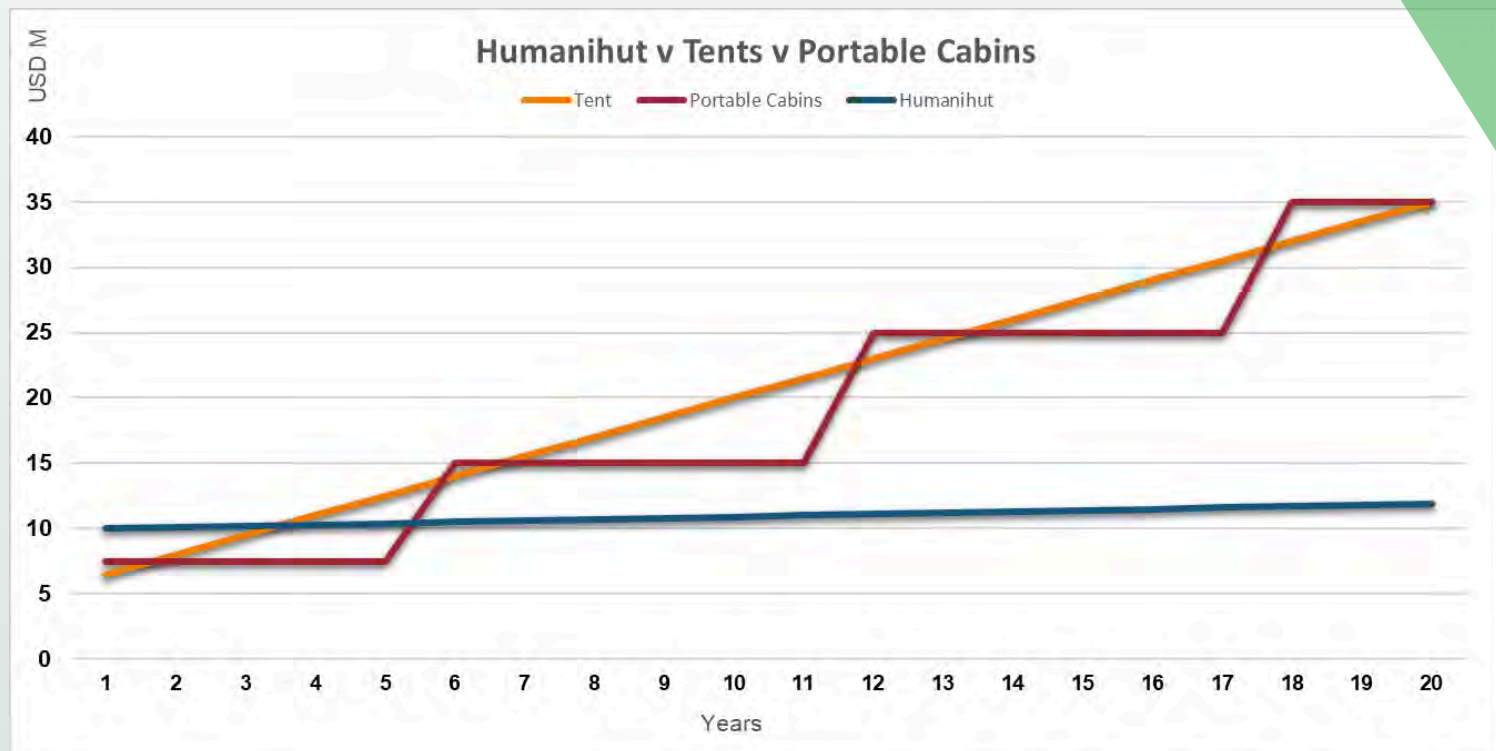


SASES Operations Support Manager Graeme Wynwood stated "Humanihut met the functional standards and compliance to support the SASES and emergency services staff in a range of conditions and applications."



## Your savings (capex).

Control of costs is a critical aspect of major delivery programmes. It is therefore vital to consider “whole life” costs and not just the simple transactional purchase/lease. Humanihut have benchmarked costs for multiple clients and when compared accurately against portable cabins, a saving of 20% + can be made. It is paramount that businesses & programmes calculate the complete lifecycle from initial purchase to disposal. The Humanihut solution has been designed to create not only a product, but a unique cost-effective solution.



### Humanihut

- Rigid, climate controlled, & redeployable
- 20+ year life span
- Comfortably accommodating up to 8 people (high density)
- Includes bunk-beds, mattresses, black out curtains and privacy screens.

### Portable Cabins

- Generic and not easily customisable
- Requires replacement every 7 years
- Accommodates up to 4 people
- Includes bunk-beds and foam mattresses

The values given assume a camp size of 2,500 people and are approximate for market value in July 2022. The data is based over a 20 year period and values do not include bathroom facilities, water, or power amenities.

## Environmental wins.

**Groundworks:** Humanihut has been designed so that there is minimal ground preparation required. All services are above ground and the patented click and connect system ensures that no cables or pipes require digging-in whilst remaining insulated from the environment.

**Water and waste management:** All components, accessories, and necessary utilities are integrated for rapid deployment and ease of establishment, meaning the HFIS can operate independently without access to mains water, power, and wastewater infrastructure, or it can easily connect to main services.

**Power:** Integrated into the Humanihut solution with a mix of traditional power and renewables. Humanihut continues to develop power solutions utilising UPS. Portable cabins often contain materials that can be harmful to the environment if not handled properly. For example, older units may contain asbestos, lead-based paint, or other hazardous substances and safe disposal requires compliance with environmental regulations and proper handling of these materials.

**Repurposing:** At the end of life, Humanihut infrastructure can be recycled or repurposed for a range of other uses and opportunities. In addition, the innovative design of 8 Huts flat packed in to one shipping container provides logistical efficiency and reduced site storage requirements when not in use.





Our awards.



DISRUPT 100





# Next steps.

We understand the challenges and limitations of field locations and the ability to deliver suitable infrastructure solutions.

This is intended to be the basis for developing our discussion on opportunities for us to support your infrastructure requirements.

Once you have had chance to review, we would welcome the opportunity to schedule a meeting to answer any questions you may have and consider how we can assist you in moving this project forward.