



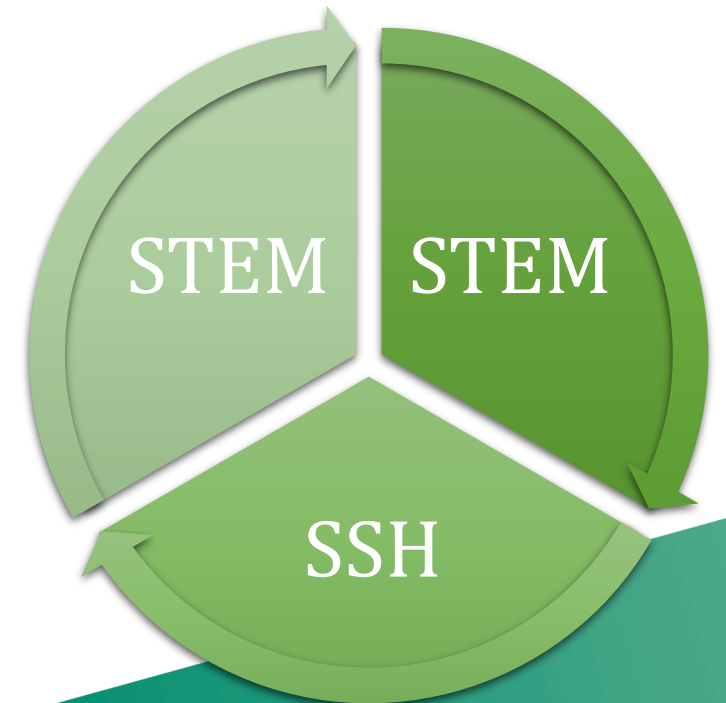
SSH Integration in Horizon Europe

Dr. Kimberly Couvson-Liebe, Net4Society, DLR Projektträger

1 June 2026

SSH Integration—a term defined

- ▶ A **technical/policy term** of the European Commission referring to the doing of **inter- and transdisciplinary research**
- ▶ A **requirement** in a number of thematic research clusters/areas
- ▶ A specific type of **research collaboration** consisting of **researchers** from the:
 - ▶ **Social Sciences and Humanities (SSH)** and
 - ▶ **Science, Technology, Engineering and Mathematics (STEM)** disciplines



Policy Background

Horizon Europe shall ensure a **multidisciplinary approach** and shall foresee, where appropriate, the **integration of social sciences and humanities across all clusters and activities** developed under the Programme, **including specific calls on SSH related topics.”**

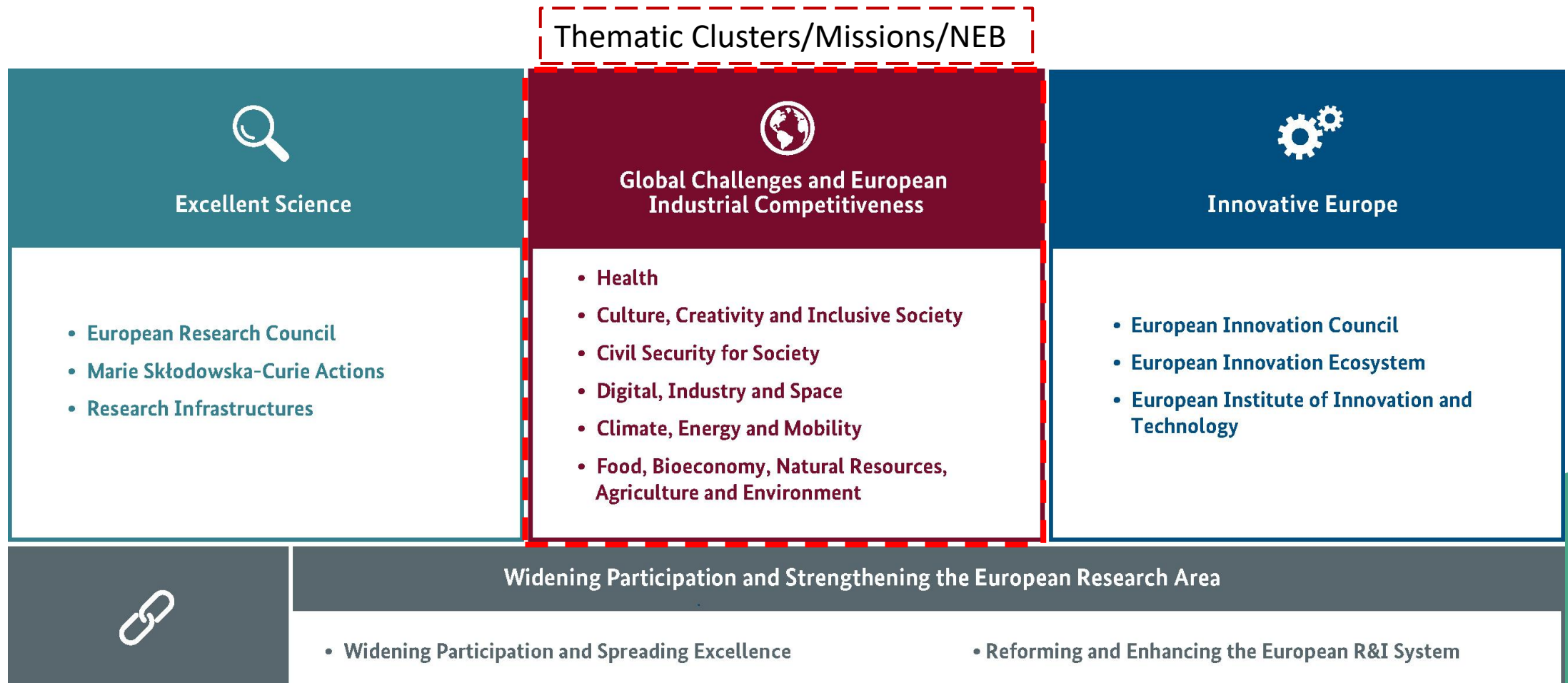
Horizon Europe Regulation, Art. 7 “Principles of the Problem”, para. 2

Knowledge from social sciences and humanities (SSH), including arts, is particularly important to explore different meanings and dimensions that global challenges bring with them and to foster reflexivity over the methods through which they are enquired. SSH is fundamental for paving the way to interdisciplinary collaborations, with knowledge of science, technology, engineering, and mathematics (STEM), while maintaining a human-centric focus.

Effectively integrating SSH into all clusters, including all missions and partnerships, is a key principle of the Programme.

Horizon Europe Strategic Plan, 2025-2027 (excerpt)

SSH Integration in Horizon Europe



Why SSH-STEM collaboration?

Incorporating SSH research perspectives and methods in technologically-oriented research can play a pivotal role in ensuring that technological tools and innovations produced by the hard sciences and engineering are:

**Comprehen-
sively
analysed**

for their **implications** on society, social/cultural groups, etc.

**Critically
assessed**

so that a **positive place/fit** in the **existing/changing social order is identified** → not taking “things for granted”

**Adequately
designed**

to **adapt** to social needs/values

Benefits of SSH in tech-oriented research

SSH partners can furthermore help to:

- ▶ **Identify** emerging trends and attitudes
- ▶ **Understand the conditions** which make use/acceptance of technologies possible (plausible)
- ▶ Offer **interpretations/grounded-scenarios of the conditions** under which technology can be designed to **favourably** support human needs and/or realistically generate vast positive impacts

SSH-STEM research collaborations can help projects to:

- ▶ **Generate new knowledge**, based on **critical questioning** of established modes of thinking/practice
- ▶ Generate knowledge that is **original** and **unique** from that which individual disciplines can deliver
- ▶ Generate **new ideas/visions** of what is possible within existing (real-life) frameworks

Research questions posed and addressed by SSH—examples

Which group will be affected?

Will the influence be a positive or negative or negative one?

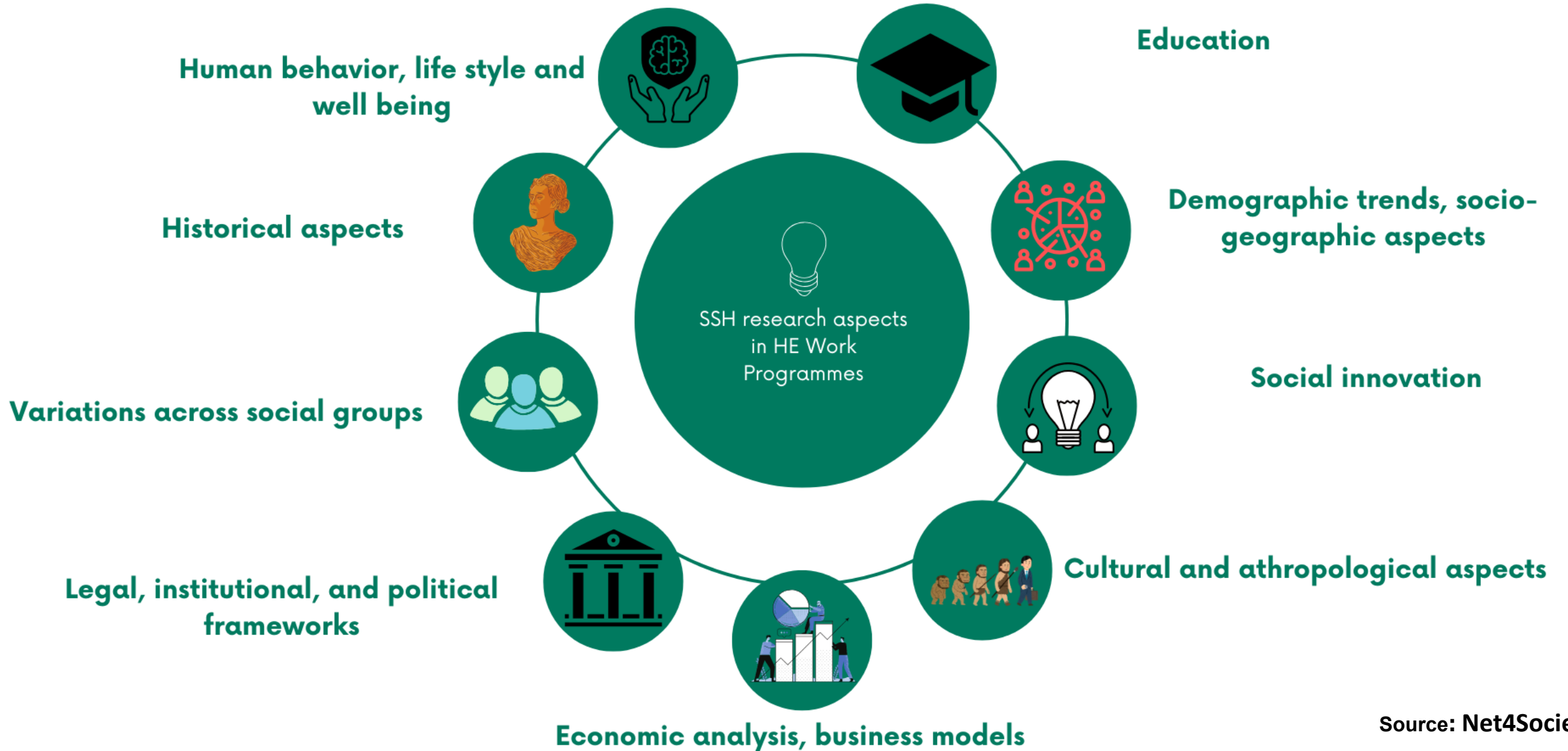
What type of strategy can be developed to resolve any emerging resistance by society

**Will the technology to be produced disrupt social dynamics?
Offend cultural sensibilities?**

What can a plan to counter any possible disruption look like?

**Is this strategy the right approach?
What about working directly with our target groups to learn what they think or believe?**

SSH research aspects in HE Work Programmes—broad themes



SSH research aspects in HE Work Programmes 2026-27

- SSH research outside of Cluster 2 in Pillar II can be broadly divided into three categories:



Social Research Aspects



Economic Research Aspects



Humanistic Aspects

- These three categories are found in all other research clusters/Missions/NEB

SSH research aspects in HE Work Programmes 2026-27



Social Research Aspects

Economic Research Aspects

Humanistic Aspects

Cluster 1	Behavioural change & lifestyles; equity & inclusion; health & digital literacy; community involvement	Sustainability & economic burdens; cost-benefit ratio; system & workforce efficiency	Trust & outreach; ethics of innovation; psychosocial well-being; strategic foresight
Cluster 3	Social dynamics & climate; community resilience & addictions; inclusion & radicalization prevention	Scarcity markets & fraud; criminal justice efficiency; affordability	Ethics & fundamental rights; language and perception; multicultural and gender analysis
Cluster 4	Human-centric industrial evolution; socio-technical impact; equity & inclusion; co-creation models	Long-term profitability; accelerated market access; SME & startup support	Harnessing the arts; strategic foresight; deep consumer insights
Cluster 5	Engagement & acceptance; behaviour & group dynamics; inclusivity & mobility; supply chain collaboration	Costs of inaction; business & market models; socio-economic analysis of mobility; cost efficiency	Trust & disinformation; ethics & justice; strategic foresight
Cluster 6	Co-creation & participation; citizen engagement & social innovation; social sustainability & drivers, inclusivity & vulnerable groups; behavioural determinants	Competitiveness & strategic autonomy; market creation & valorisation; cost-benefit analysis & financial risks; rural & urban economic resilience	Ethics in technology; cultural heritage & traditions; education & peer learning; policy fairness & coherence; standardization & norms

SSH research aspects in HE Work Programmes



Social Research Aspects

Economic Research Aspects

Humanistic Aspects

Missions

Inclusion of vulnerable groups; co-design & participation; social innovation & behaviour

Hybrid financing & public-private collaboration; sustainable business models; cost-benefit assessment; EU taxonomy

Integrity & cultural heritage; ethics & quality of life

NEB

Co-creation & active participation; inclusion of vulnerable groups; coordinated social infrastructure; social acceptance & coexistence

Affordability; new business & funding models; socio-economic impact assessment; resource efficiency

NEB values (i.e. beauty, sustainability, inclusion inhabitant experience & well-being; cultural heritage & identity; social justice

Example of effective SSH integration: SOCIAL PRESCRIBING-EU (SP-EU) (Cluster 1)

HORIZON-HLTH-2024-CARE-04-04-two-stage - Access to health and care services for people in vulnerable situations



Coordinator: Charité –
Universitätsmedizin
(Institute of General Practice
and Family Medicine; Urban
Primary Care Research Group)

<https://social-prescribing.eu>

Example of effective SSH integration: SOCIAL PRESCRIBING-EU (SP-EU) (Cluster 1)

Overall objective:

... of SP-EU is to assess the potential of SP to promote and improve access to health and care services for people in vulnerable situations, focusing on three primary target groups: **LGBTIQ persons, refugees and first-generation immigrants and older adults** living alone.

SP-EU follows a **mixed-methods approach**: **SP adaptations** will be **co-created** with the target groups, **to adapt** them to their **specific needs** and **social contexts**. A pragmatic randomized controlled trial will assess the effectiveness of the adapted SP to improve access by randomizing 1,776 patients in eight EU countries to receive SP or care as usual. A **qualitative analysis** in five European countries will explore **enabling and limiting factors to the implementation of SP from different stakeholders' perspectives**. Additionally, we will communicate and disseminate results and translate them into policy action.

SP-EU will enable health care systems to implement SP as a scalable, safe, cost-effective and people-centred solution to provide equal access to sustainable care. Thus, SP-EU will enable the transformation of European health care systems to **equitable, community-based, people-centred** and integrated health care.

Example of effective SSH integration: SOCIAL PRESCRIBING-EU (SP-EU) (Cluster 1)

Consortium:



23 partners

11 countries (EU/AC)

SSH disciplines

Health economics
Public health
Social psychology
Cognitive psychology
Ethics

STEM disciplines

Epidemiology
Informatics
Statistics (incl. biostatistics)

non-academic partners

LGBTIQ+ consultancy
Red Cross
Medical centres
Software developers
Social economy organizations

Example of effective SSH integration: SOCIAL PRESCRIBING-EU (SP-EU) (Cluster 1)

Project structure:

- 4 work streams (overarching, thematic/strategic aspects of project):
 - co-creation
 - randomized control trial (RCT)
 - **qualitative analysis**
 - Dissemination, exploitation, communication and policy work
- 19 interrelated work packages

MANAGEMENT

Involved work packages:

WP1-4: Coordination, project and data management

CO-CREATION

Involved work package:

WP5: Co-creation of Social Prescribing interventions

SOFTWARE ENGINEERING

Involved work packages:

WP6: Digital linkworking tool development

WP7: Digital linkworking tool support

CLINICAL STUDY & HEALTH ECONOMICS

Involved work packages:

WP8: RCT preparation, including ethics

WP9-10: RCT implementation

WP11: RCT analysis

WP12: RCT process evaluation

WP13: Health economics assessment

WP15: Co-interpretation of results

QUALITATIVE ANALYSIS

Involved work package:

WP14: Comparative qualitative study

DISSEMINATION & COMMUNICATION

Involved work packages:

WP16-19: Dissemination, communication, exploitation, and policy work

Example of effective SSH integration: SOCIAL PRESCRIBING-EU (SP-EU) (Cluster 1)

Rationale for the qualitative analysis:

“Qualitative research is an approach that can explore experiences and help with understanding meanings. Hence, **this part of the SP-EU will illuminate findings from the trial and provide an insight** into how social prescribing is **perceived** in different countries. It will support us in **understanding how context shapes people’s encounters** with social prescribing. In addition, **it will surface issues** related to accessing social prescribing **for underserved groups**, which can be considered when designing and delivering this approach to ensure its provision is equitable and accessible...”

Signalling SSH Integration in Horizon Europe

- Identified by the standard sentence:

“This topic requires the effective contribution of social sciences and humanities (SSH) disciplines and the involvement of SSH experts, institutions as well as the inclusion of relevant SSH expertise, in order to produce meaningful and significant impact of the related research activities.”

- “**SSH-flags**”: Main instrument used by the European Commission to ensure involvement of specific SSH research methods, competencies, and skills in funded research projects are so-called
- Flagging in all clusters and missions

SSH Opportunities Document

“Opportunities for Researchers from the Social Sciences and Humanities (SSH) in Horizon Europe”

- ▶ **Overview** of SSH funding chances in Horizon Europe Programme (all Clusters & some other programming areas, incl. Missions, NEB)
- ▶ Goes **beyond** European Commission flagged topics published in F&T Portal
 - ▶ **Highlighted SSH keywords** (“SSH aspects” of a topic)
- ▶ Available at:
<https://horizoneuropencppportal.eu/store/ssh-opportunities-document-2026-2027>



SSH Opportunities Document (HTML version)

NCP Portal / SSH Opportunities

▶ **Same content** as PDF version, but **fully online and searchable by either cluster/research area or keywords**

▶ Available at:
<https://horizoneurope.ncpportal.eu/ssh-opportunities>

SSH Opportunities

- 1. Cluster 1 - Health
- 2. Cluster 2 - Culture, Creativity and Inclusive Societies
- 3. Cluster 3 - Civil Security for Society
- 4. Cluster 4 - Digital, Industry and Space
- 5. Cluster 5 - Climate, Energy and Mobility
- 6. Cluster 6 - Food, Bioeconomy, Natural Resources, Agriculture and Environment
- 7. European Research Council
- 8. Horizontal activities
- 9. MSCA - Marie Skłodowska-Curie Actions
- 10. Missions
- 11. New European Bauhaus Facility
- 12. Research Infrastructures
- 13. Widening Participation and Strengthening the European Research Area
- 14. Browse by keyword

Introduction

This document is designed to help potential proposers find SSH-related topics across the different parts of the Horizon Europe Work Programme 2026-2027.

Social Sciences and Humanities (SSH) in Horizon Europe

Horizon Europe aims to fully integrate Social Sciences and Humanities (SSH) in each of its pillars. In particular, under the pillar 'Global Challenges and European Industrial Competitiveness', SSH should be fully integrated across all clusters. SSH is therefore a cross-cutting issue and integrated into the whole Framework Programme. While SSH research aspects are particularly present in Cluster 2 'Culture, Creativity and Inclusive Society', they are also present in all other clusters and in other parts of Horizon Europe.

Horizon Europe requires applicants to submit proposals and build consortia that transcend disciplinary and sectoral boundaries, bringing together scholars from SSH and from life and physical sciences, technology, engineering and mathematics (STEM), as well as researchers and practitioners across these fields.

The SSH encompass a wide range of disciplines such as sociology and economics, psychology and political science, history and cultural sciences, law and ethics. Contributions from these research and activity fields are needed under Horizon Europe to generate new knowledge, support evidence-based policymaking, develop key competences and produce multidisciplinary solutions to both societal and technological issues.

SSH-flagged topics across Horizon Europe

To assist SSH researchers in identifying funding opportunities, the European Commission (EC) has established a search engine within its online Funding & Tender Opportunities Portal. Certain topics with substantial SSH aspects have been "flagged" by the EC as SSH-relevant, and the search engine offers the option to quickly search for the specific priority 'Social sciences and humanities'. It also allows for keyword and full-text search.

This document compiles the "SSH-flagged topics" on the basis of the analysis of SSH-relevant topics carried out by the thematic services and Unit D.3 Health & Societal Transitions of the EC Directorate-General for Research and Innovation. The document also includes a few additional topics that, while not flagged, may require the contribution of Social Sciences and Humanities researchers.

Researchers are strongly encouraged to screen the Work Programme themselves, in order not to lose out on research opportunities offered on their specific interests. In any case, all Work Programme parts need to be read in detail to be aware of the overall approach of the theme, the context and the full text of the topics, rules for participation, and other specific requirements. Of special importance are the "type of action" and the eligibility criteria connected to it. This and any other relevant information can be found in the specific Work Programme part and the specific call document. All relevant documents can be downloaded from the Funding & Tender Opportunities Portal. The specific links are provided for each topic in the respective chapters.

Structure of the document

**Thank you
for your attention and
good luck!**

Net4*Society*

contact@net4society.eu