

# MAGICcrepe

## AN INNOVATIVE AND VERSATILE MATERIAL

MAGIC CREPE paper from Magic Pulp is an innovative material, made in France from natural cellulose, offering a multitude of creative applications. Used for the production of paper clothing, decorative objects, paper flowers, as well as lighting fixtures and displays, it brings various projects to life while being environmentally friendly. Its unique texture and flexibility make it an ideal choice for creators looking for a sustainable and innovative alternative.

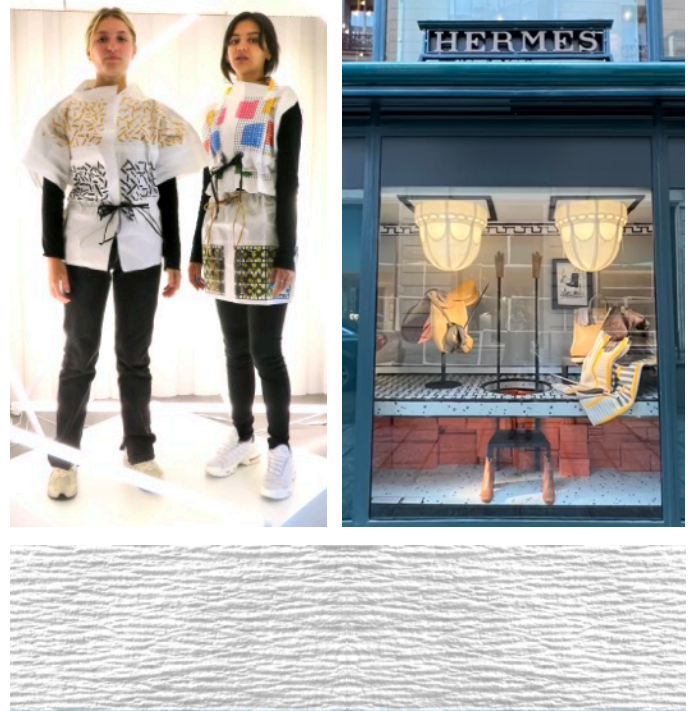


## TECHNICAL SPECIFICATIONS

- Repulpable
- Recyclable, biodegradable
- Soft creped paper, opaque, gentle to touch
- Basis weight: 43, 50, 60, 80, 110 & 140 gsm
- Fibers: 100% cellulose – Bio-based
- White color
- Printable with all techniques
- Germ barrier
- Made in France
- FSC certified
- CE compliant
- ISEGA certified for food contact



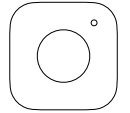
Magic Pulp ©



MAGICPULP®  
Le papier réinventé



[magicpulp.com](http://magicpulp.com)



[magicpulpfactory](https://www.instagram.com/magicpulpfactory)

## AN ECONOMICAL, PRATICAL & CREATIVE SOLUTION

MAGIC CREPE is an affordable, lightweight, and easy-to-handle material that enables the creation of quality products at low cost. Its versatility and user-friendly nature make it an ideal support for various applications while helping to reduce production costs. Thanks to its ease of customization and familiar character, it encourages creativity for both professionals and amateurs, making it a playful tool for accessible and inventive projects.

## STRONG ECOLOGICAL COMMITMENT

Made entirely from natural cellulose, MAGIC CREPE is a mono-material that is biodegradable, compostable, and fully recyclable through the existing paper and cardboard waste stream. By offering an alternative to plastic and other polluting materials, it stands out as an eco-responsible solution aligned with today's sustainability goals. Its lightness and low end-of-life impact make it a material of the future, designed for responsible and contemporary creation.