



Flanders
State of the Art

Data-Driven & Smart Cities

Where Technology Meets Sustainability

SustainableSolutionsMatch

Welcome!



SustainableSolutionsMatch

Session Agenda

- Welcome & Introduction
- Opening keynote: Nils Walravens, Smart Cities & Digitalization Expert
- Pitch Presentations:
 - Pitch 1: Lipa-Innovation (Belgium)
 - Pitch 2: Breeze Technologies (Germany)
 - Pitch 3: Bruntor (Latvia)
 - Pitch 4: DigitalTwin Technology (Germany)
 - Pitch 5: Geosparc (Belgium)
 - Pitch 6: trc (UK)
 - Pitch 7: VisibleCrossing (Hungary)
 - Pitch 8: Sensoneo (Slovakia)
- Closing Remarks





Welcome & Introduction

Who's moderating?

Maaïke Van Overmeire

Sustainability Advisor

VLAIO / EEN Flanders



Who's organizing?



SustainableSolutionsMatch

Welcome & Introduction

Let's play by the rules: smooth sailing for our session!

- **Mute Policy:** Please remain muted unless speaking to avoid background noise.
- **Q&A Time:** After each pitch, there will be 1–2 minutes for questions. Please use the chat to ask questions.
- **Time management:** Pitchers, please keep track of your time. We will inform you if 5 minutes have passed.
- **Technical Issues:** If you encounter issues, use the chat to notify the host.



Keynote

Smart Cities and Communities Quo vadis?

Nils Walravens, PhD
VLAIO



An aerial photograph of a sprawling urban landscape at sunset. The scene is dominated by a complex, multi-level highway interchange with numerous overpasses and ramps. The sun is low on the horizon, casting a warm, golden glow over the entire scene, which includes residential areas with houses and trees interspersed among the roads.

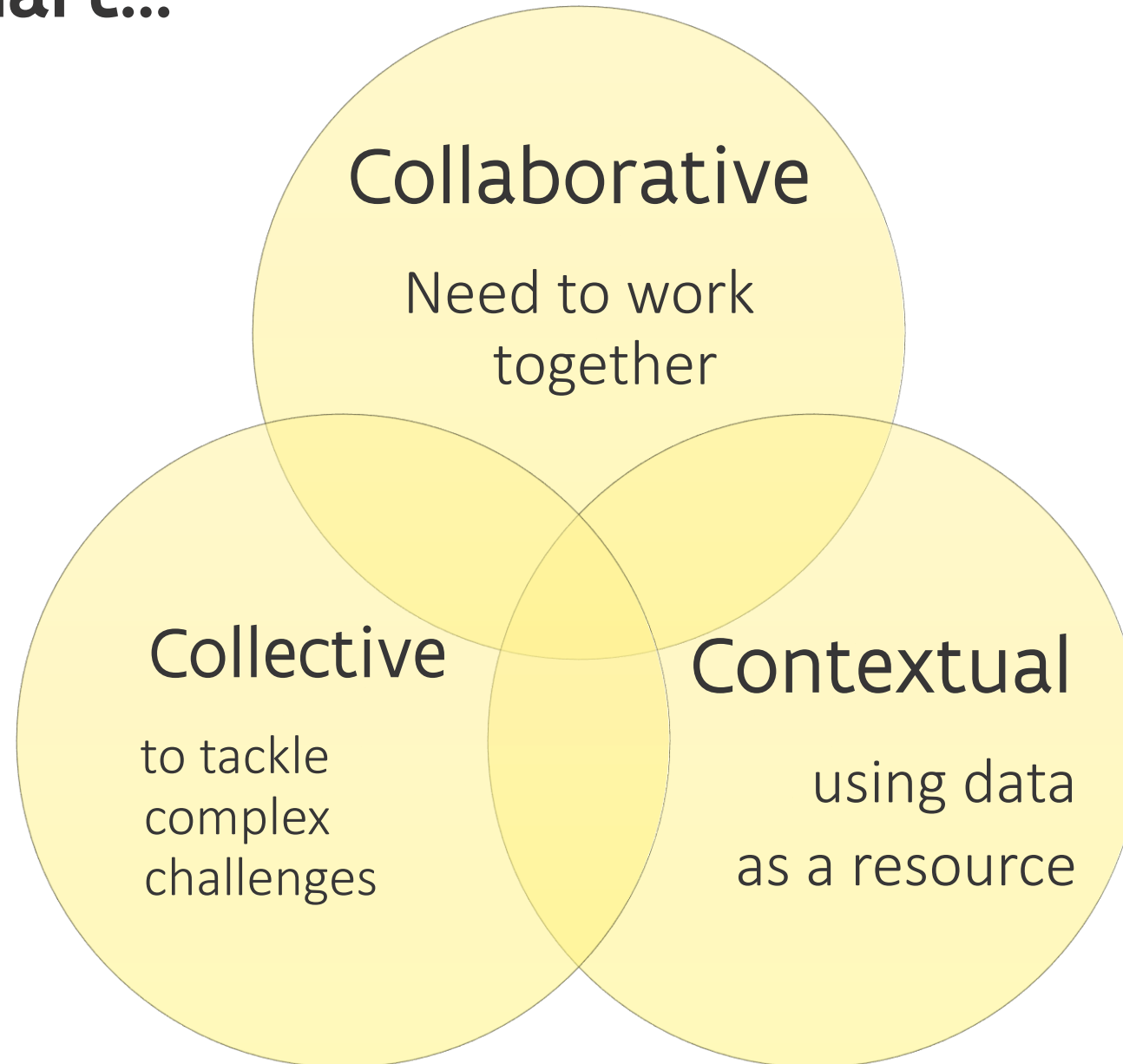
Smart Cities and Communities Quo vadis?

NILS WALRAVENS, PHD – VLAIO

SUSTAINABLE SOLUTIONS MATCH – SMART CITIES

14 FEBRUARY 2025

I am so smart...



What are we dealing with as local governments?

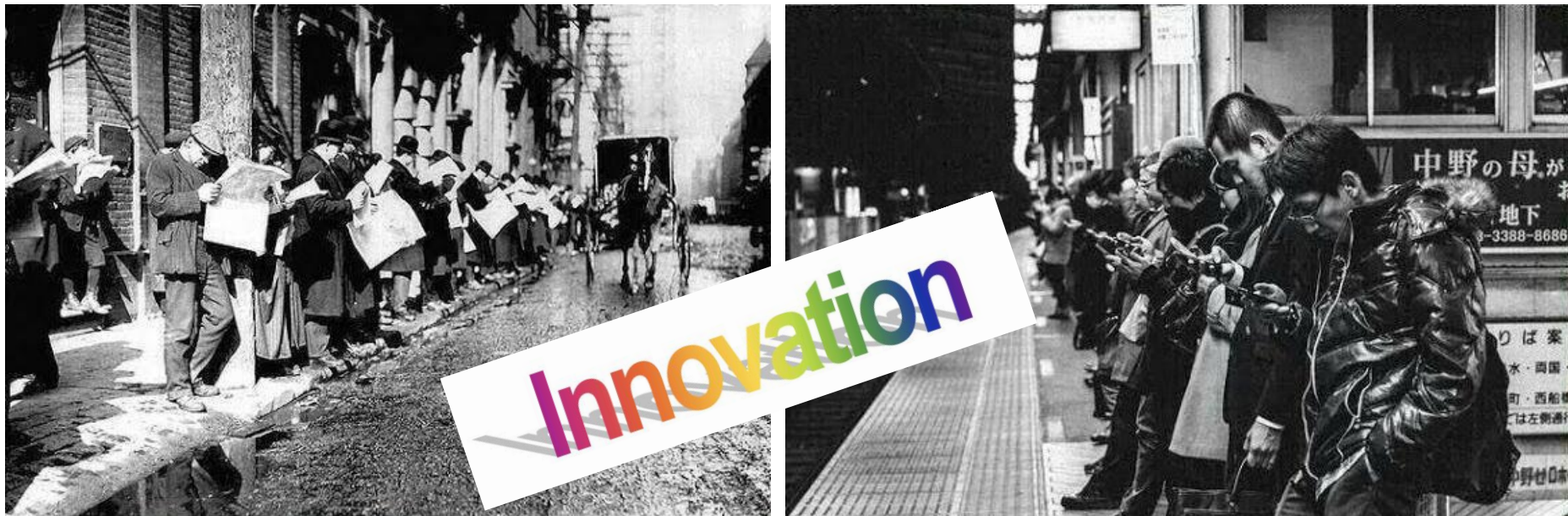
Which challenges are suited for such an approach?

How do we fit a “smart” approach into the day-to-day?

How do we relate to solution providers?

How and when do we involve citizens, companies, knowledge orgs and so on?

How do we deal with technology and the data it generates?





Approach in Flanders

Smart Region Office

ADVISORY, FACILITATING AND CONNECTING ROLE

The Smart Region Office is the **liaison** between the Smart City initiatives of the Government of Flanders, local governments and companies, and sets out a joint policy.

The Smart Region Office **translates** the Flemish, federal and European Smart City policies, initiatives and project calls to local government, knowledge institutions and companies.

Organises: matchmaking, knowledge exchange, networking, funding opportunities...

Smart Region Office Team

smartregionoffice@vlaanderen.be

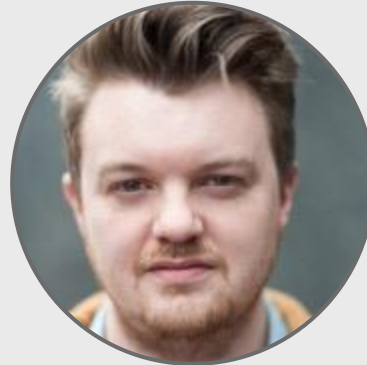
<https://vlaanderen.be/smart-region-office>



Willem Geelen

Digital Flanders

willem.geelen@vlaanderen.be



Nils Walravens

Agency for Innovation and
Entrepreneurship

nils.walravens@vlaio.be



Ken Daems

Agency for the Interior
(Urban policy)

ken.daems@vlaanderen.be

Pitch Presentations

Time to meet the innovators!

Pitch 1

**Lipa-Innovation
Patrick Brants**

Belgium



Compressed Air Frequency Containment

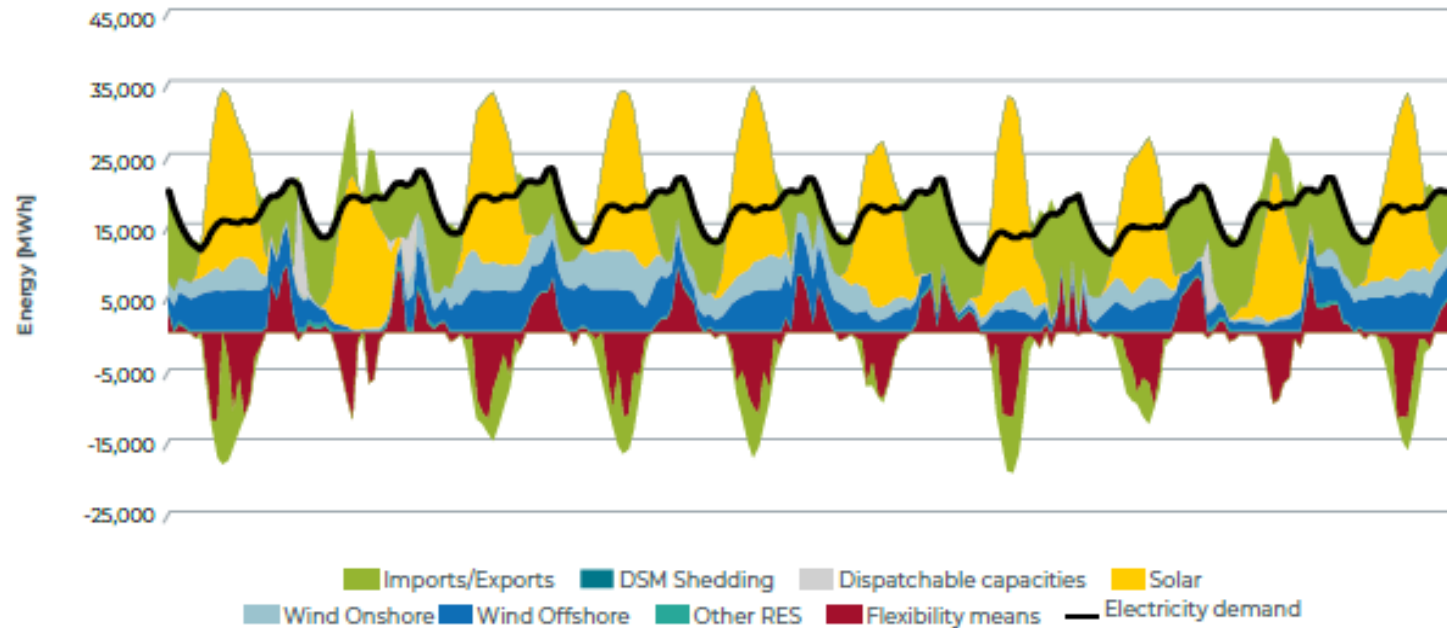


BRANTS Patrick
innovator



SustainableSolutionsMatch

Concept to match supply and demand on the electricity grid



How? 3 ingredients

With 1kW of renewable energy, one gets back up to 0.5kW when needed and produces an additional 1kW of heat and 0.5kW of cooling.

E-generator



Compressed air storage



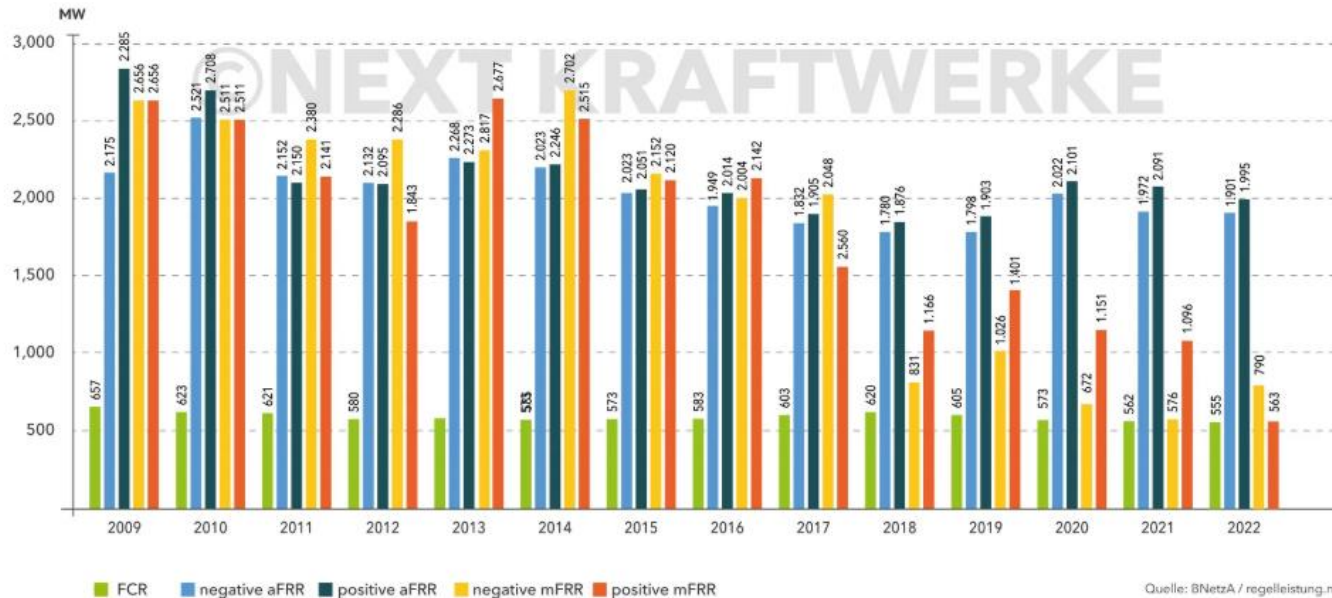
Compressor



Our solutions differential value and sustainable impact

Our system, while less cost-effective than battery storage and water storage, is super interesting for coping with very short-term power shortages, namely the 15-minute balancing market (The FCR Market > Frequency Containment Reserve Market).

Tendered Quantities of Control Reserve in Germany / Average amount in MW per year



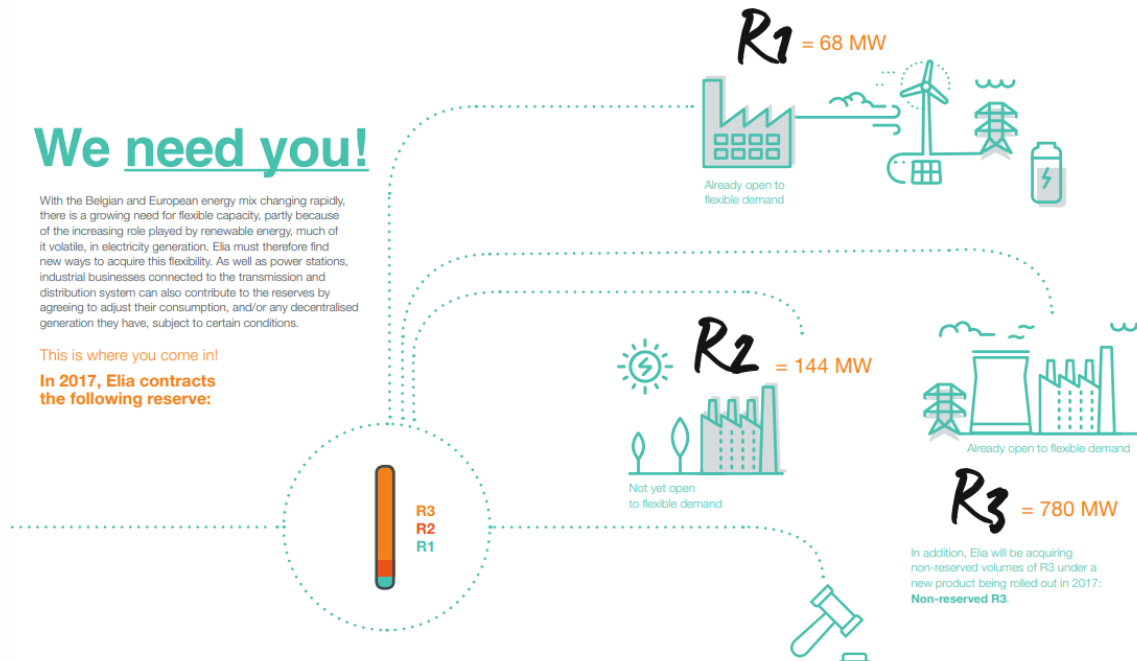
Market/Target audience – Who can apply our solution?

The grid suppliers (Balancing Responsible Partners) are looking for Balancing Service Partners and this for a capacity that keeps on rising because of renewable energy,

We need you!

With the Belgian and European energy mix changing rapidly, there is a growing need for flexible capacity, partly because of the increasing role played by renewable energy, much of it volatile, in electricity generation. Elia must therefore find new ways to acquire this flexibility. As well as power stations, industrial businesses connected to the transmission and distribution system can also contribute to the reserves by agreeing to adjust their consumption, and/or any decentralised generation they have, subject to certain conditions.

This is where you come in!
In 2017, Elia contracts the following reserve:



Sustainable and circular innovation needs good networks along the whole value chain. Preferred cooperation partners:

We are looking for a **company specialising in HVAC for buildings**, putting innovation first and willing to pull the cart with us and a scientific partner to make this simple concept a success story.

Every other heating/cooling system costs money annually (namely energy consumption), our system on the other hand has a **payback period**! Why wait to talk to us and who knows a successful cooperation,



#EENCanHelp

Book a meeting with: Lipa-Innovation

Patrick Brants



een.ec.europa.eu



Pitch Presentations

Time to meet the innovators!

Pitch 2

Breeze Technologies
Robert Heinecke

Germany





Environmental Intelligence Suite:

Air quality monitoring & analytics solution



BREEZE
TECHNOLOGIES

Breeze Technologies

Robert Heinecke
Founder & CEO



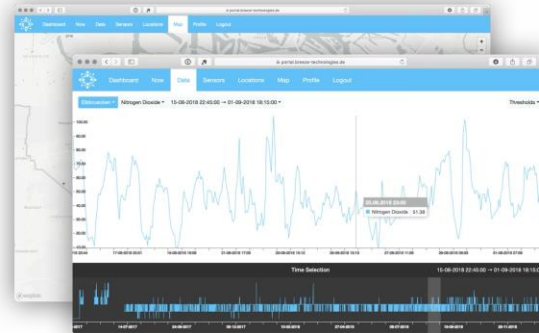
SustainableSolutionsMatch

Our approach: Collect environmental data, translate it into insights and recommendations, and communicate about it.



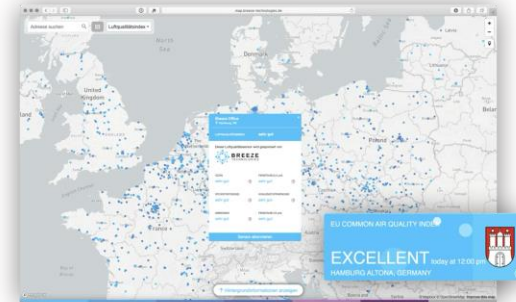
Monitor

Collect hyperlocal environmental data:
Air quality and noise pollution, wildfire
detection. Automatic calibration.



Take Action

Translate environmental data into
actionable recommendations:
AI-enabled. Air quality improvements
of up to 70% in reference projects.



Communicate

Optional citizen portal, website
widgets and other tools enable real-
time data & success sharing.



The air quality sensors of Breeze Technologies are monitoring all important air quality parameters in real-time.

T	Temperature	O ₃	Ozone
RH	Humidity	NO	Nitric Oxide
CO	Carbon monoxide	NO ₂	Nitrogen Dioxide
CO ₂	Carbon dioxide*	NH ₃	Ammonia
PM _x	Particulate Matter (10µm + 2.5µm)	VOC	Volatile Organic Compounds*
SL	Sound Level*	SO ₂	Sulphur Dioxide*



Typical usage scenarios



Evidence-based urban planning

Integrate environmental data in urban planning processes to identify potential for optimisation, successes and local best practices



Traffic management

Routing and traffic shaping based on air quality data to reduce overall pollution exposure in the cityscape, integration in public transport services



Chemical transport models

Air pollution dispersion can be geo-spatially analysed - even identifying individual polluters is sometimes possible



City marketing

Showcase particularly good air quality to increase attractiveness in tourism and family settlement, as well as a tourism destination



Climate protection management

Citizen science initiatives activate citizens for climate protection activities - have citizens act as sensor hosts or participate in hackathons



Smart city integration

Integrate air quality data in a horizontal smart city platform to create synergies with other urban data sources



Project reference: Municipality of Vilnius

Enabling self-reliant air quality management



Vilnius is the capital of Lithuania with around 550,000 inhabitants. Vilnius was dependent on air quality data from the environmental ministry. Breeze Technologies enabled them to:

- **Conduct their own investigations** of air quality data with quick deployment of sensors in city-relevant locations
- Build a foundation for decision making in **traffic management and urban planning** with particular focus on the old town
- Integrate air quality data into the **smart city platform** for further analysis



Why Breeze Technologies



Turn-key environmental monitoring

We take care of sensor calibration, quality assurance, investigate conspicuous data and replace sensors as part of your subscription.



Direct contact with our management

No faceless support hotlines - as our customer, you are in direct contact with our core management. Your success and feedback are essential to us.



10 years of experience in smart city projects

With smart city project experience from over a dozen countries, we are happy to assist you in concept development and implementation.



Your city's data is yours

All environmental data captured by our sensors belongs to you. Forever. Our platform's open APIs enable deep integration with your technology stack.



One-stop shop

Breeze Technologies provides you a fully integrated environmental monitoring and management solution, saving cost and effort.



A certified social business

Breeze Technologies has been certified as a social business by Grameen Social Lab in December 2023.



#EENCanHelp

Book a meeting with: Breeze Technologies

Robert Heinecke

Founder & CEO

Breeze Technologies

robert@breeze-technologies.de



een.ec.europa.eu



Pitch Presentations

Time to meet the innovators!

Pitch 3
Bruntor
Raimonds Jurgelis
Latvia



THE BRUNTOR CARGO VEHICLE: SAFE, SUSTAINABLE AND COMFORTABLE LAST-MILE DELIVERIES



BRUNTOR

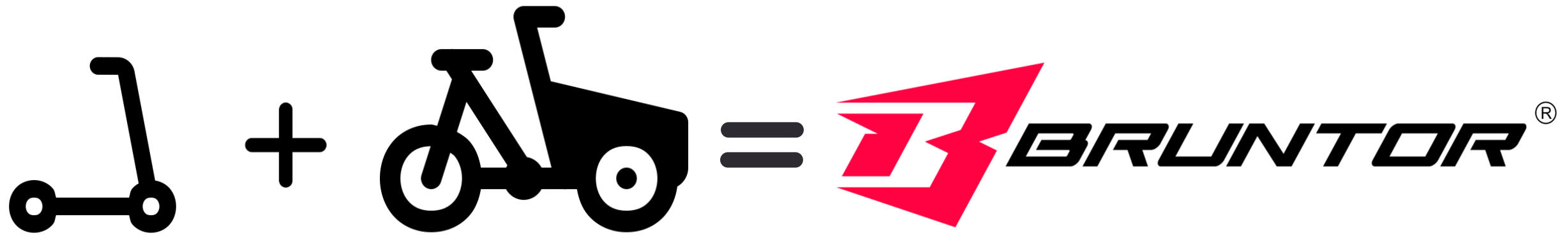
Raimonds Jurgelis
CEO



SustainableSolutionsMatch

TRAVEL TIME OUTWEIGHS WORK TIME





MORE STOPS AT THE SAME TIME





Outdated

Slow

Physically demanding





WHY CHOOSE BRUNTOR?

Effortless Operation

High Load Capacity

Inclusive Design



DIVERSE INDUSTRIES, UNIFIED SATISFACTION

POST



HOSPITALITY



CITY LIFE

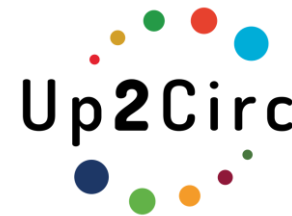


🔒 Protected design & pending patent





COOPERATION PARTNERS



Policy makers

Parts manufacturers

Micromobility enthusiasts



#EENCanHelp

Book a meeting with: BRUNTOR

Raimonds Jurgelis

CEO

BRUNTOR

Raimonds.jurgelis@bruntor.com



een.ec.europa.eu



Pitch Presentations

Time to meet the innovators!

Pitch 4

DigitalTwin Technology
Dr. Tariqul Islam

Germany





Simulating Smart Cities: Dynamic Cityscale Digital Twins for Extended Reality

DigitalTwin Technology GmbH

Cologne, Germany

Dr. Tariqul Islam
R&D Project Manager



SustainableSolutionsMatch

About us

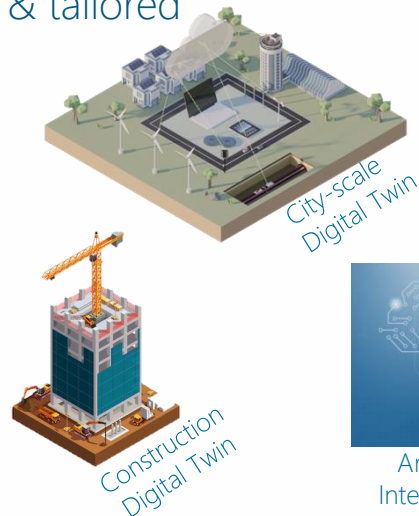
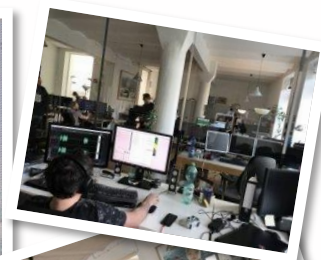
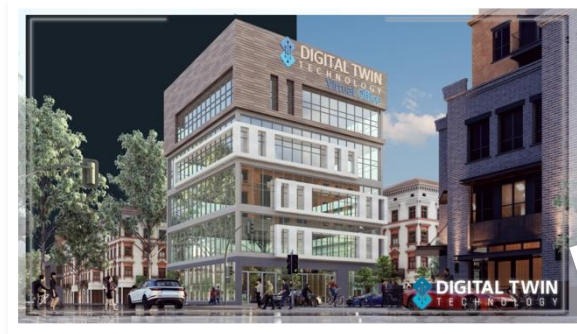
DigitalTwin Technology GmbH

- Founded in 2018, an SME headquartered in Cologne, Germany

- Our vision :

Develop advanced, open-source & tailored Digital Twin ecosystem for

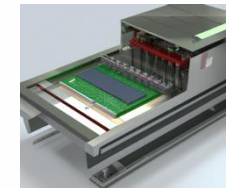
- Smart Cities
- Construction
- Manufacturing
- Semiconductor



Sensor and Control



Artificial
Intelligence



3D Modeling of Machine



SustainableSolutionsMatch

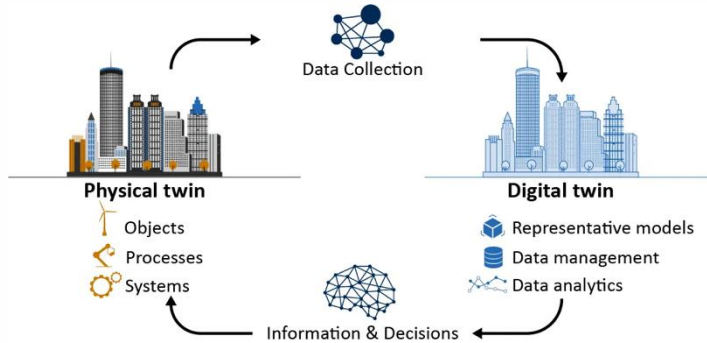
Dynamic Cityscale Digital Twins for Extended Reality

Smart City Project



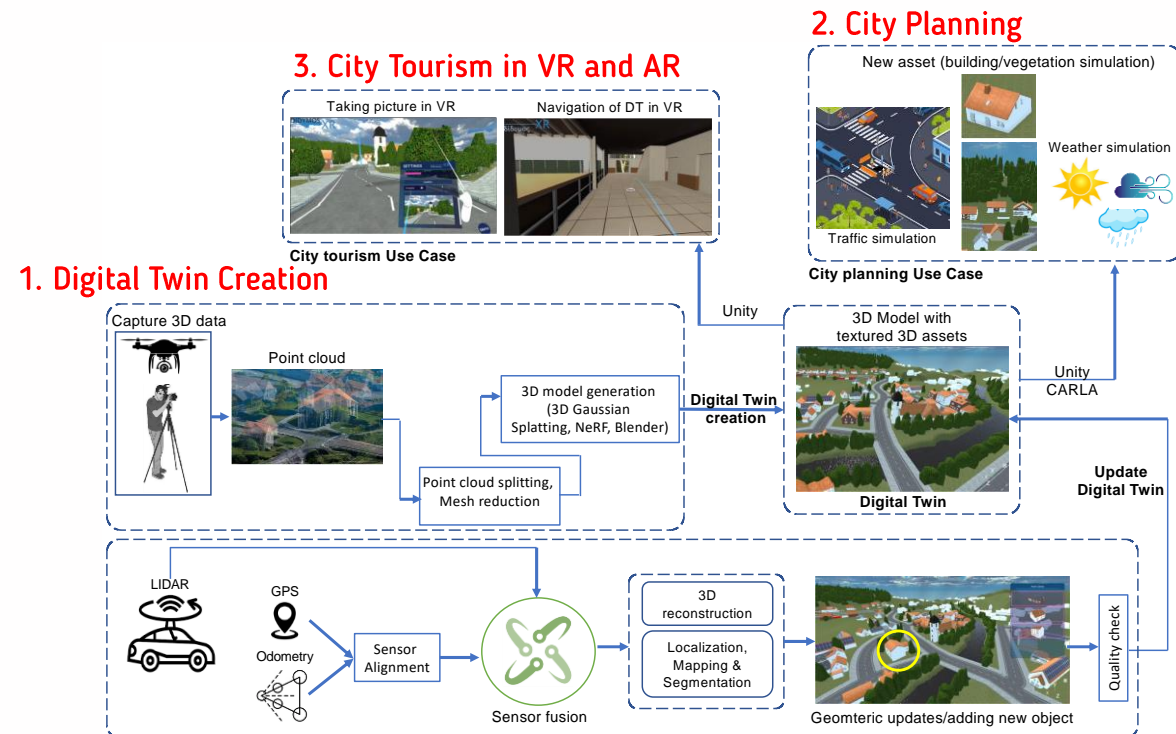
Funded by EU Horizon Europe

- Digital Twin** – virtual replica of real-world physical objects and adapts to real-world condition changes



Example of City-scale Digital Twin of Etteln, Germany

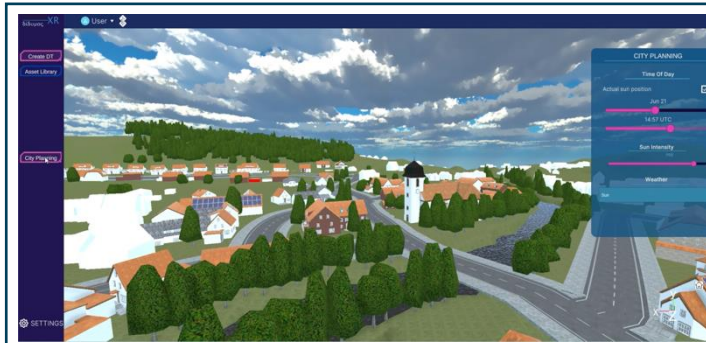
Three Use Cases



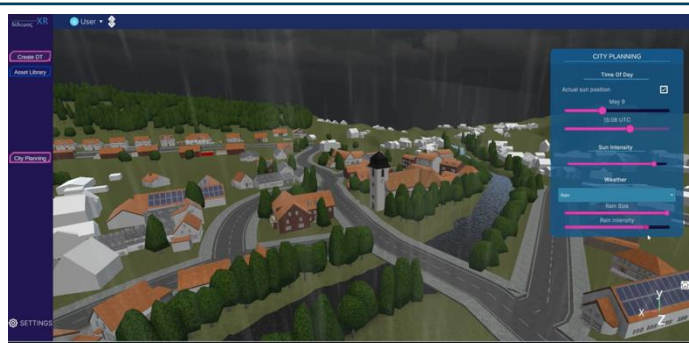
Dynamic Cityscale Digital Twins for Extended Reality

• Development Results

Weather
Simulation



Light intensity

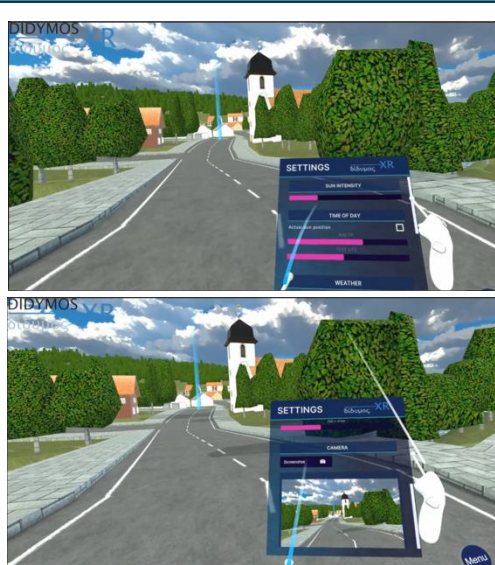


Rain

Traffic
Simulation



Immersive
Digital
Twin
in VR

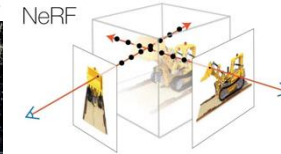


• Technologies and tools used for developments

• Digital Twin Development, City Planning

- AI models (*NeRF*, *Gaussian Splatting*)
- Unity 3D, WebGL
- Blender, 3D Studio Max

3D Gaussian Splatting



• City Tourism in VR

- Unity 3D
- Meta Quest 3

• Traffic Simulation

- Unity 3D
- SUMO



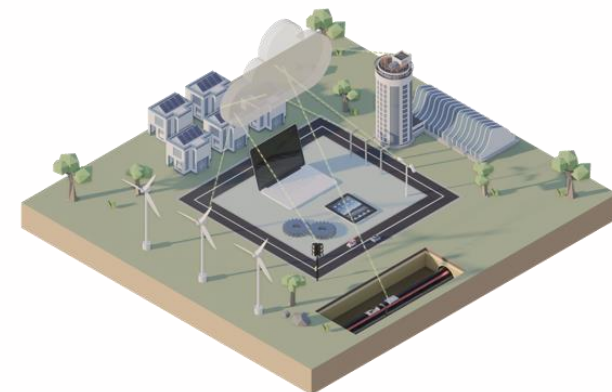
Our solutions differential value and sustainable impact

➤ Benefits of our solution

- Our Digital Twin (DT) solution
 - supports **Real-time Synchronization** with real-world sensor data.
 - provides **Higher Realism** via **Improved 3D models** and semantic understanding for more accurate XR experiences.
 - Includes **Automation in DT Creation** via cutting edge **AI models** for automated scene understanding.
 - Supports **large 3D models** in the pipeline
 - **Lowers overall cost** for overall DT creation and maintenance

➤ Sustainable impacts of our solution

- Our Digital Twin (DT) solution supports
 - Optimized **Urban Planning & Resource Management**
 - Efficient **Building & Energy Management**
 - **Biodiversity & Green Space Conservation**
 - **Smart Mobility & Reduced Private Car Dependency**
 - Reduced **Carbon Footprint & Emissions**



Market/Target audience – Who can apply your solution?

- City planners
- City Architects
- City council
- Traffic managers
- Tourism managers
- Event managers



What kind of cooperation partners would you like to connect to beyond finding new customers?

We are looking for **Project Consortium Partners**

From:

- Industry (SME/RTO/LE)
- Academia

In Sectors:

- Smart City
- Construction
- Semiconductor
- Manufacturing
- ICT

Partner roles:

- Project partner
- Project coordination

Goals:

- To develop proposal
- implement research activities



#EENCanHelp

Book a meeting with: DigitalTwin Technology GmbH

Rahul Tomar / Holger Sprengel

Managing Director and Co-founder

DigitalTwin Technology GmbH

rahul.tomar@digitaltwin.technology / holger.sprengel@nurogames.com



een.ec.europa.eu



DIGITAL TWIN
TECHNOLOGY

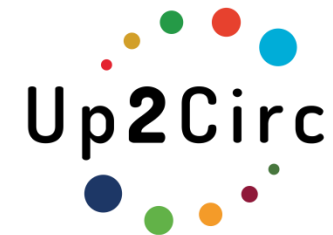


Pitch Presentations

Time to meet the innovators!

Pitch 5
Geosparc
Berdien De Roo
Belgium





Smart water quality monitoring



Geosparc

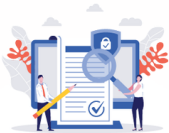
Berdien De Roo
Product manager



Geosparc – Make your policy's impact predictable

TOOLS TO ENABLE POLICY

DATA-DRIVEN POLICY MAKING
GEO PLATFORMS & OPEN DATA TECHNOLOGY
EFFECTIVE & SUPPORTED DECISION MAKING
SIMULATION TOOLS



DATA-DRIVEN INCIDENT MANAGEMENT

SMART ALARMING
DATA-DRIVEN MAINTENANCE PLANNING
DATA-DRIVEN ROUTE OPTIMIZATION
UPSTREAM & DOWNSTREAM TRACING ALGORITHMS



FACILITATE SMART PARKING & CHARGING

CHARGING INFRASTRUCTURE OPTIMIZATION
PARKING ENFORCEMENT ENABLING
PARKING GUIDANCE ENABLING
SMART MOBILITY HUBS
PARKING CONGESTION MANAGEMENT



GIS EXPERTISE

GEO TECHNOLOGY
GEO DATA VISUALISATION
TAILOR-MADE GEO REPORTING
GEO CONSULTANCY



SENSOR & DATA MONITORING

MONITORING:
- HARDWARE FUNCTIONALITY
- NETWORK QUALITY
- LATENCY & MISSED MESSAGES
- DATA QUALITY & TRENDS



INTEGRATION & FLEXIBILITY

MULTI-DEVICE
MULTI-NETWORK
MULTI-DATA SOURCE
SMART ALGORITHMS



PLATFORMS & APPLICATIONS

INTAKE PUBLIC DOMAIN
IOT DATA MIDDLEWARE
WATER TRACING
ENFORCEMENT ROUTING
ACCESS CONTROL



SPOTBOOKING
PARKTRACK
WATERTRACK



BeProAct – Smart water quality monitoring

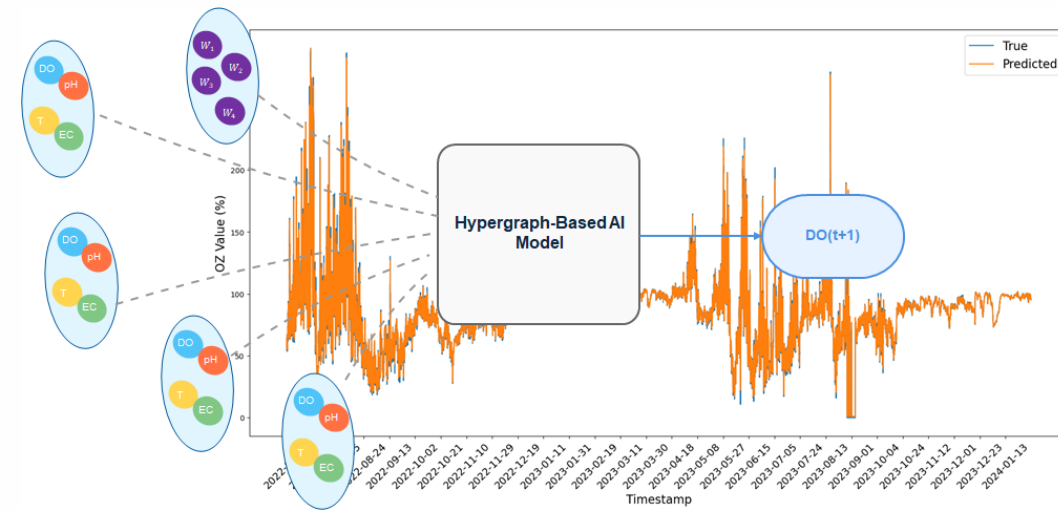
<https://www.youtube.com/watch?v=nJSenTJzsf8>



SustainableSolutionsMatch

BeProAct – Smart water quality modeling

- Predicting Dissolved Oxygen for early response actions to prevent fish death
- Collaboration with Université de Lille
- LSTM-model
 - Multiple parameters
 - Hypergraph model for multiple stations and weather data
 - MAE ~ 1%



#EENCanHelp

Book a meeting with: Geosparc

Kris De Pril

CEO

Geosparc

Kris.depril@geosparc.com

Tom De Kegel

Business Development

Geosparc

Tom.DeKegel@geosparc.com

Berdien De Roo

Product manager

Geosparc

Berdien.DeRoo@geosparc.com



een.ec.europa.eu



GEOSPARC



Pitch Presentations

Time to meet the innovators!

Pitch 6

Trc
Rohith Varma
UK





City as a Service

Transforming City: The Future of Urban Mobility with TRC

Rohith Varma | CEO
rohith@trc.city



The Urban Mobility Challenge

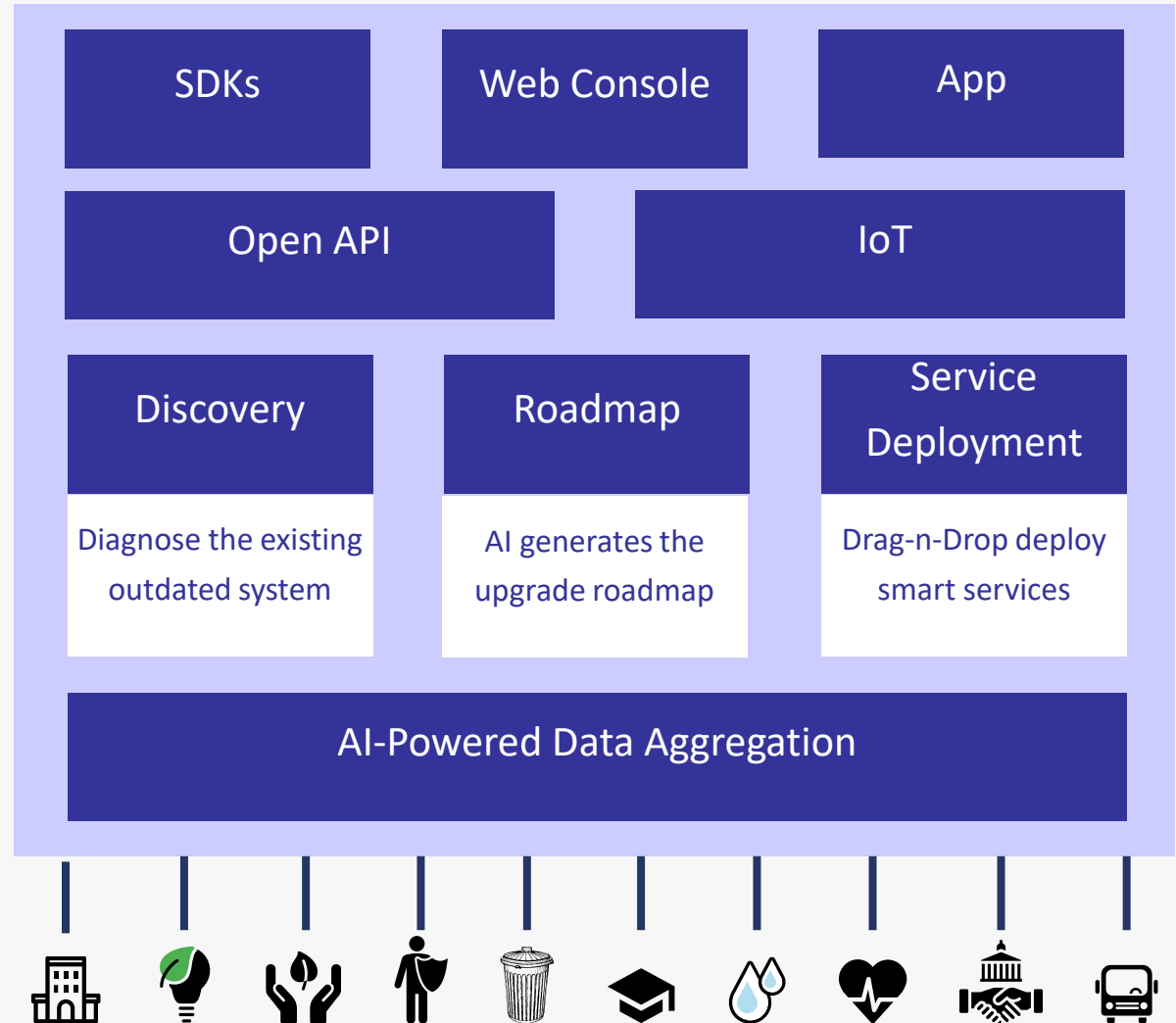


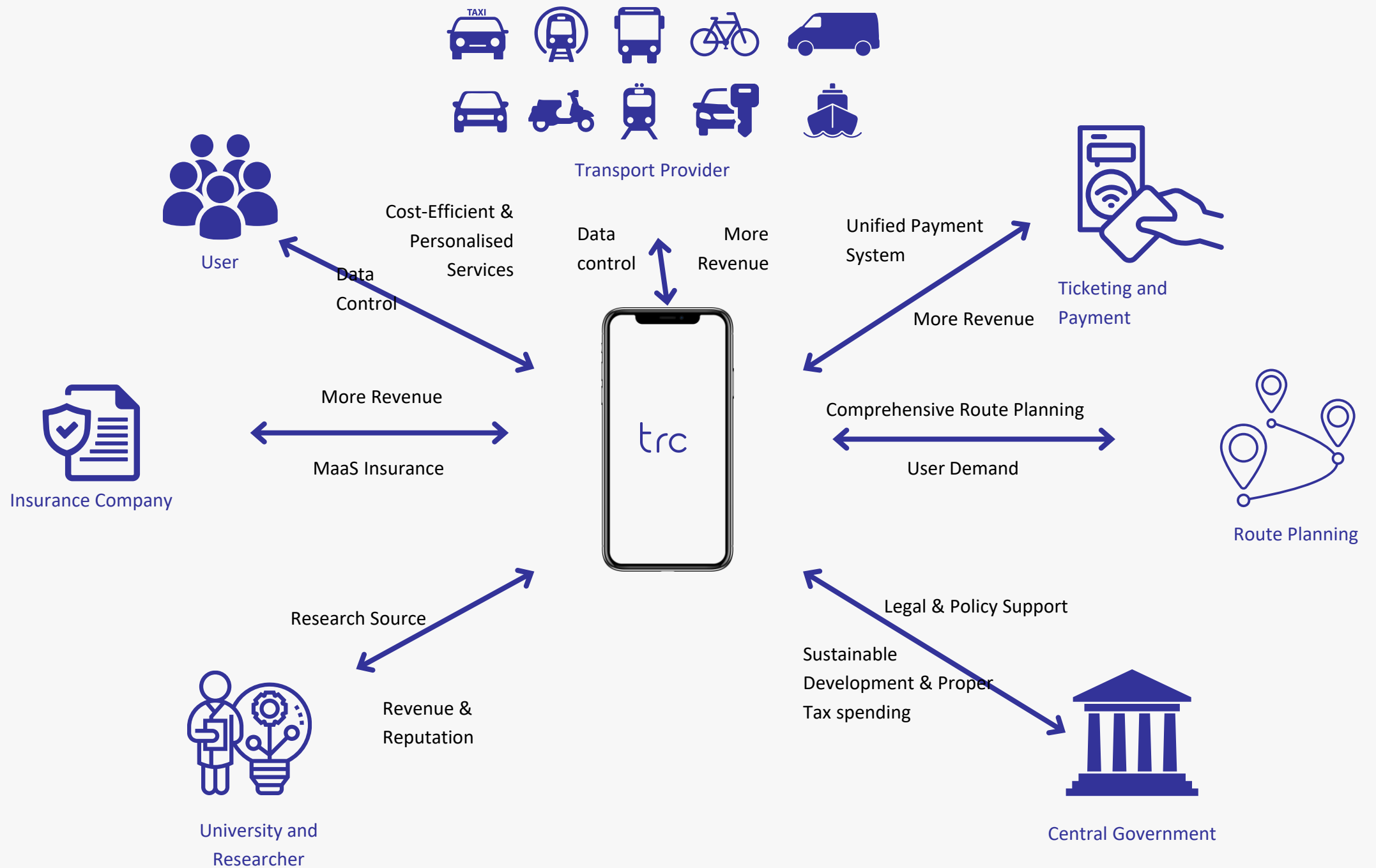
- Current challenges: congestion, operational inefficiencies, outdated systems, and financial strain.
- Urban areas contribute to 70% of global CO₂ emissions despite occupying only 2% of the land.
- The need for a unified, data-driven approach to integrate metro, buses, bikes, and e-kick scooters.

Solution

Plug-n-Play | SaaS platform

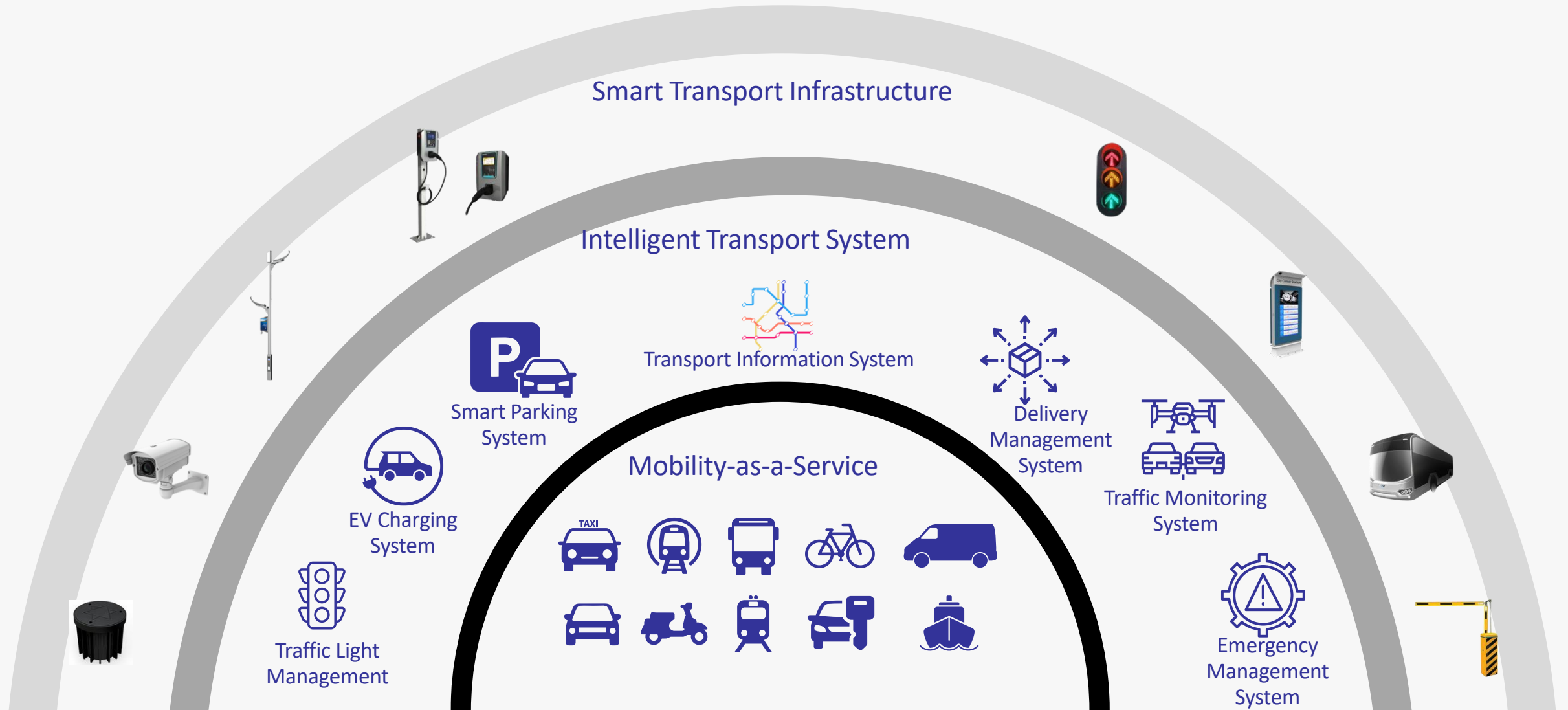
Centralizes all essential city services, providing real-time data insights and analytics to city managers.





Solution - Smart Transport

Smart Transport: Includes solutions like Mobility-as-a-Service (MaaS), Demand-Responsive Transport (DRT), and Smart Parking, which optimize traffic flow, reduce emissions, and enhance public transportation efficiency.



Smart Transport



trc

Welcome to CaaS Console!

Enhance city operations with real-time AI insights, improve team efficiency, and boost community engagement through instant communication.

Log in

Email address

rohith@trc.city



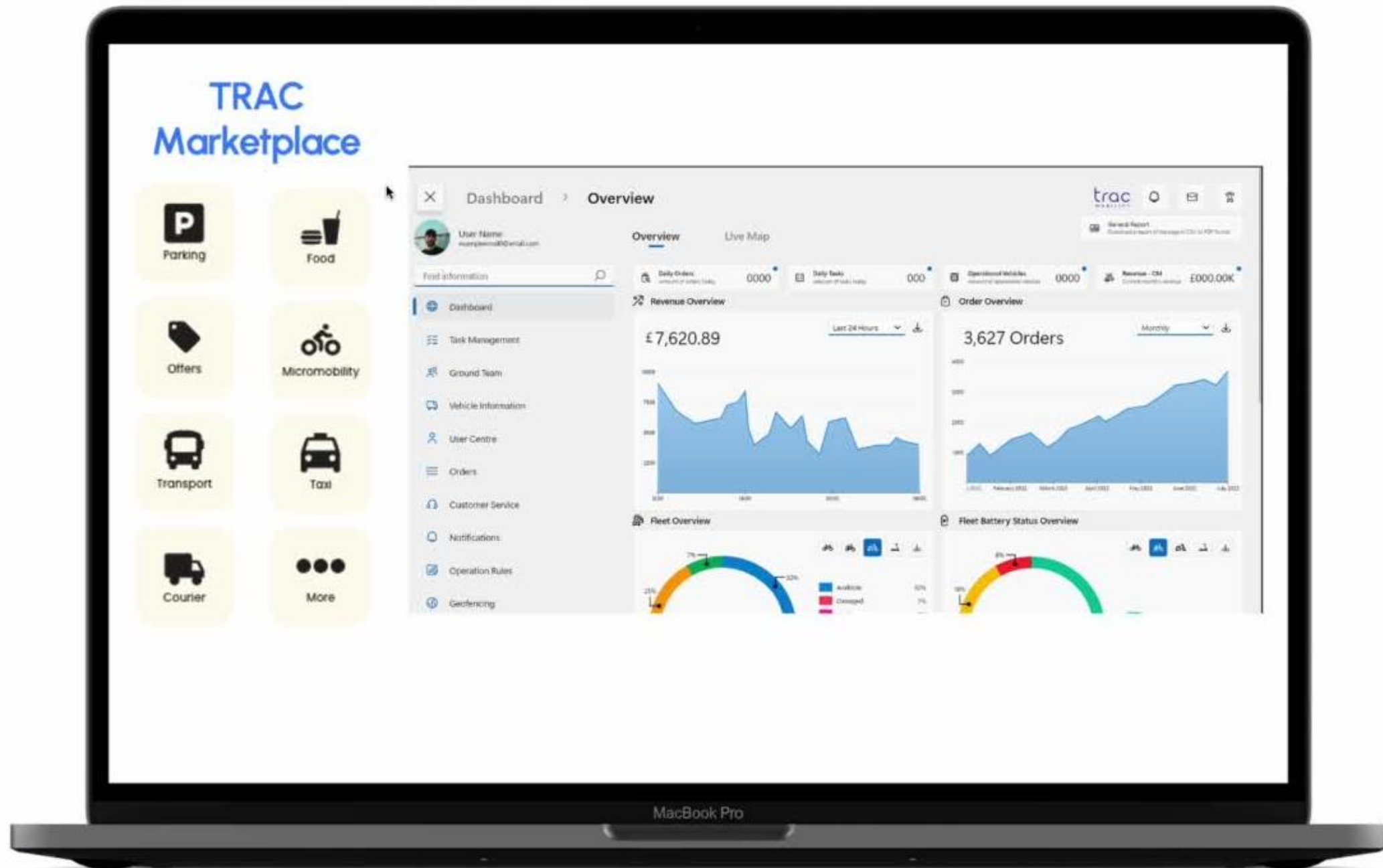
☐ Remember me

Log in

or [Create an account](#)



Product- Demo



Live in 33 cities

Money Saved
€10,300,000



نيوم NEOM

- 7-Year Infrastructure Partner
- Reduced Costs by 20%

LOI's

5

Devices Connected

1,334,000+



- 10-Year Contract
- Value: \$20 million
- Insuretech Data Platform*



أرامكو السعودية
saudi aramco



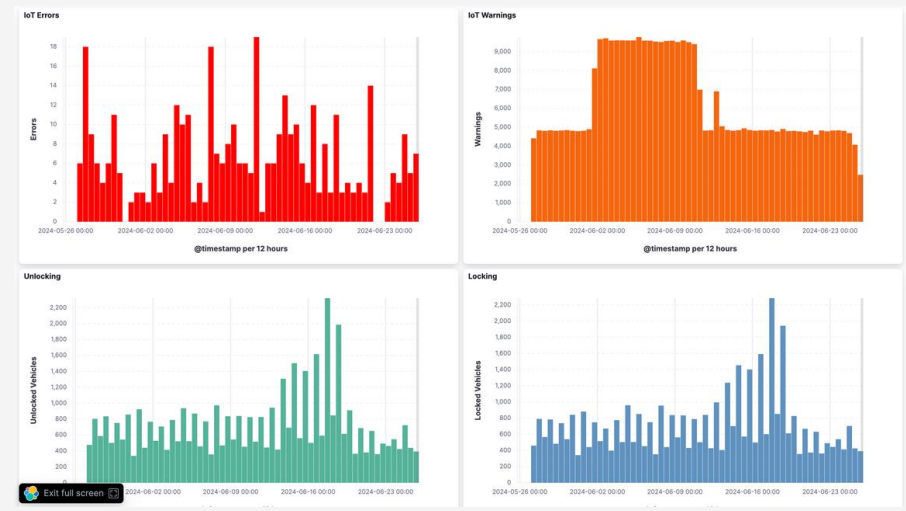
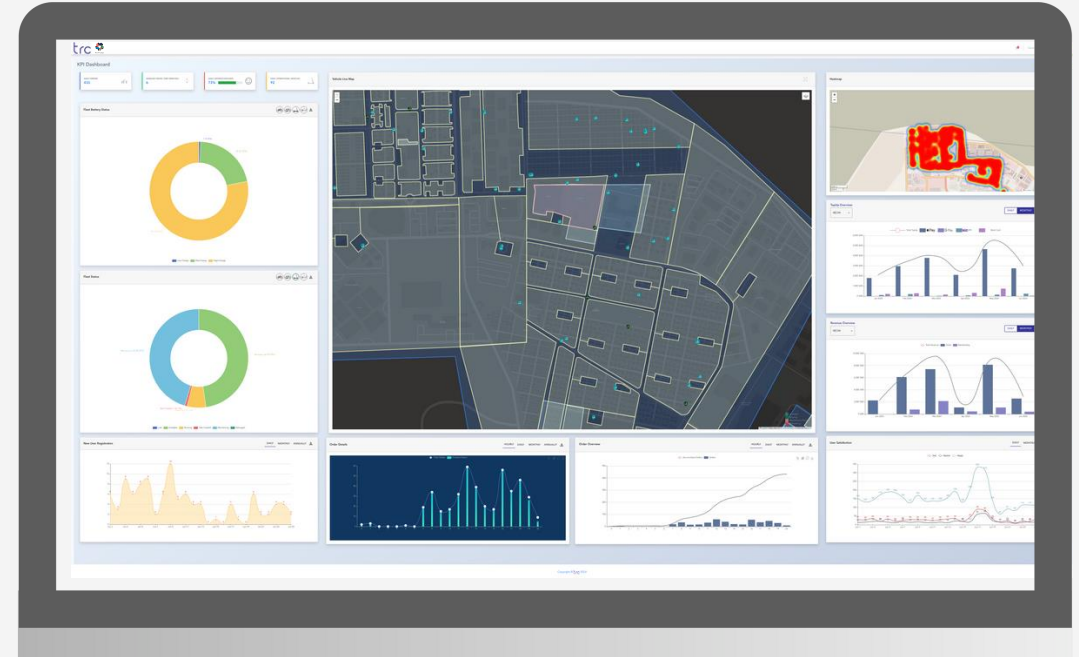
*In Progress

Case Study - NEOM



نيوم NEOM

- Implementation: TRC's tech deployed micro-mobility solutions in NEOM, enhancing urban transit efficiency and accessibility.
- Impact: Improved traffic flow, reduced emissions, provided data-driven insights for city planning.
- Value Added: TRC's platform processed 50,000 daily rides, generating \$million in monthly revenue, contributing to a sustainable and smart urban ecosystem in NEOM.



Thank you for your viewing



Rohith Varma | Founder
rohith@trc.city
www.trc.city

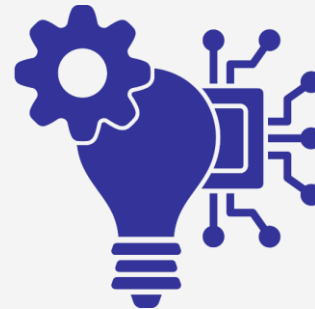
Partners Welcomed



Urban Researchers



Municipal Collaborators



IoT and Tech Innovators



Sustainability Leaders



Funded by
UK Government



Pitch Presentations

Time to meet the innovators!

Pitch 7

VisibleCrossing
Bence Márta

Hungary





SafeXOne

High precision intelligent pedestrian security system with IoT and Smart features



VisibleCrossing Ltd. / Hungary

Bence Márta

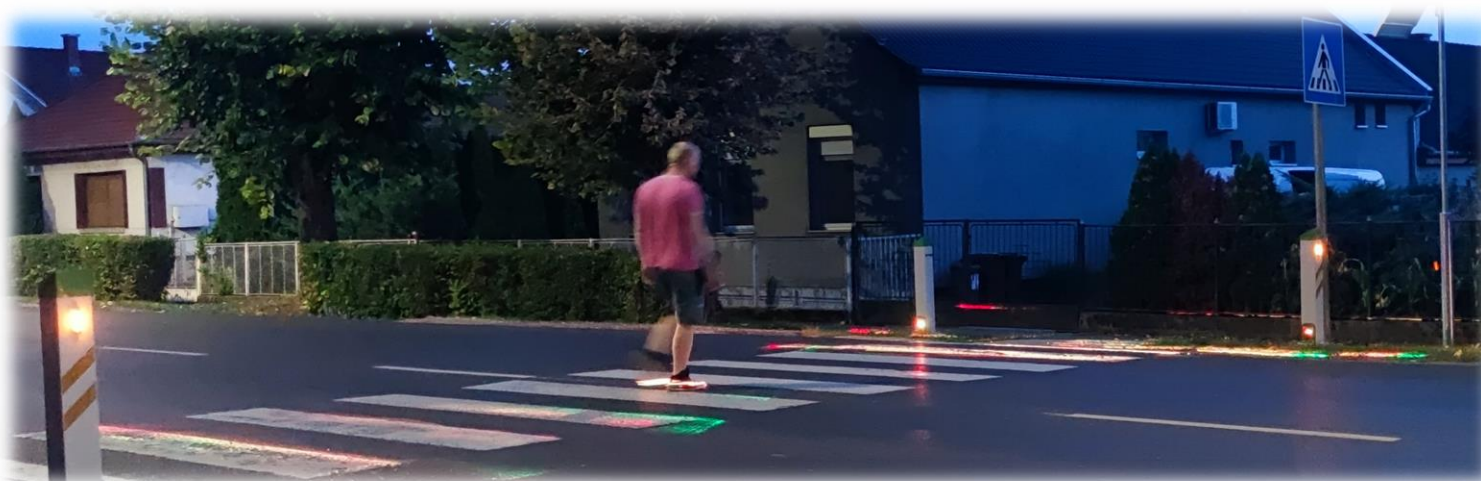
Embedded System Design Engineer /
International Relations Manager



SustainableSolutionsMatch

SafeXOne – increased visibility with light signals

- *Dangers are everywhere at zebra crossings*
- *Traditional measures are often not enough*
- **SafeXOne** system relies on modern technology to reduce the risk of accidents:
Laser and LED technology
Improves pedestrian visibility even in poor visibility conditions.



How the SafeXOne system works?

- **SafeXOne** consists of four pillars mounted on the corners of pedestrian crossings
- Built-in sensors detect when pedestrians enter the crossing and activate warning signals
- During the day, a yellow **flashing LED light** gives drivers an early warning
- In poor visibility conditions, **additional laser lights** are used
 - creating a carpet above the crossing surface (~2 cm high)
 - Highlights the movement of the pedestrians



Advantages and innovations compared to conventional systems

- SafeXOne can be installed almost anywhere without disturbing the pavement
 - wireless communication, **no need to work on the road surface**
- No mains power, can be powered by solar
- **Eliminates the most dangerous conditions** for pedestrian crossings at the same time:
 - At dusk, when street lights are not yet on but visibility is already severely reduced
 - When street lighting is inadequate or obstructed (e.g. dense vegetation, dark-coloured clothing)
- -When rainy or foggy weather conditions develop.



Statistical and monitoring information

- Central monitoring system via mobile data
- Monitoring of the system's operation from any
- Usage statistics and alert (battery status, sensor error)
- Sensor data analysis (ambient light)

Traffic counting enhancements - preparing the system to connect to infrastructure serving self-driving vehicles; (V2X), **Connectivity to Smart City.**



Invitation for cooperation

Unfortunately, the number of traffic accidents, including pedestrians hit by cars at designated pedestrian crossings, is increasing globally every year. As a global problem, our solution is relevant in any locality in any country in the world.

In order to increase pedestrian safety at as many crossings as possible, we are looking for partners with distributors, integrators and investors. We offer a wide range of support in all countries, not only at product launch but throughout the product lifecycle.

We want to reach out directly to people, municipalities, road owners, national decision-makers on transport issues, road safety associations in the targeted countries by making the SafeXOne system widely known.



Sustainable and circular innovation needs good networks along the whole value chain. What kind of cooperation partners would you like to connect to beyond finding new customers?

Direct customers

Owners of the roads concerned, local authorities, road safety organisations

Subcontracting agreement (VisibleCrossing Ltd. providing the system, subcontractor doing the installation).

Potential resellers or distributors

Contractors or subcontractors of contractors involved in road construction,

Responsible for identifying potential customers and then installing the systems.

Responsible for obtaining local permits.

Joint venture

Manufacturing partially done in the target country

Know-How provided by VisibleCrossing Ltd.



#EENCanHelp

Visit our website:

<https://visiblecrossing.net>

Bence Márta/László Nagy

Embedded System Design Engineer/CEO

VisibleCrossing Ltd.

bence.marta@visiblecrossing.hu / laszlo.nagy@visiblecrossing.hu

Mobile: +36 30/144 7454



een.ec.europa.eu



Pitch Presentations

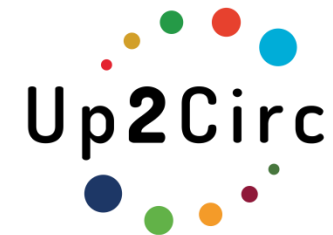
Time to meet the innovators!

Pitch 8

Sensoneo
Martin Kosák

Slovakia





Data-driven waste management

((SENSONEO))

Sensoneo

Martin Kosák
CMO



SustainableSolutionsMatch

Municipal Waste
Collection (Collection of
waste produced by
citizens and businesses)

Deposit Return Schemes
(Nationwide collection of
deposited packagings paid
by vendors)

Industrial Waste
Collection (Collection of
waste produced in
factories)

Extended Producer
Responsibility (Collection
of used products paid by
vendors)





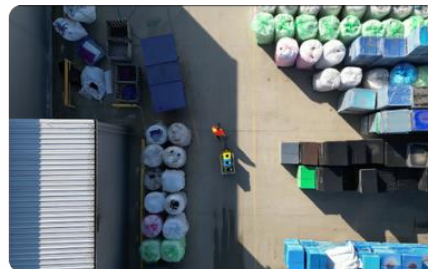
Municipal Waste
Collection (Collection of
waste produced by
citizens and businesses)



Deposit Return Schemes
(Nationwide collection of
deposited packagings paid
by vendors)

Industrial Waste
Collection (Collection of
waste produced in
factories)

Extended Producer
Responsibility (Collection
of used products paid by
vendors)





Buenos
Aires
Ciudad



City of Reykjavik



MADRID

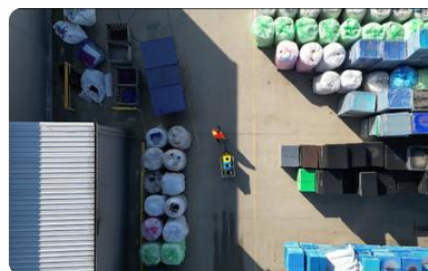
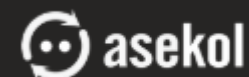
Municipal Waste
Collection (Collection of
waste produced by
citizens and businesses)

Deposit Return Schemes
(Nationwide collection of
deposited packagings paid
by vendors)



Industrial Waste
Collection (Collection of
waste produced in
factories)

Extended Producer
Responsibility (Collection
of used products paid by
vendors)



\$156

Annual savings per sensor

((S))



8

countries with Sensoneo
DRS IT system

+2 in 2025/26

((SENSONEO))



A 90% collection rate, by the numbers:



An additional **9.3 billion** containers recycled

Annual greenhouse gas reduction equivalent to eliminating **121k cars**



Up to **34% less litter** overall



SustainableSolutionsMatch

Sensoneo solution is available via a global network of partners

The presence of a partner in a region provides customers with an extra layer of customer service and local know-how. Our partners are system integrators, network operators, waste management companies, bin producers, consultancies, and others.



#EENCanHelp

Book a meeting with: Sensoneo

Martin Kosák

CMO

Sensoneo

martin.kosak@sensoneo.com



een.ec.europa.eu

((SENSONEO))



Closing Remarks

A big thank you to all pitchers and attendees!
We appreciate your participation today.

If you'd like to connect with any of the pitching companies, please use the matchmaking tool to **book a meeting!**

Next available at
09:00 - 09:30 CET
Monday 10 February 2025

FEB
10
in 1 mo

+ Request meeting

Need support? **Enterprise Europe Network is here to help!**

Reach out to your local Network partner:

<https://een.ec.europa.eu/local-contact-points>



#EENCanHelp

Thank you!

Name session lead

Role

Organisation

Email



een.ec.europa.eu

