

**YOUR  
PROJECT  
IS OUR  
CONCERN**



*Acoustics Consultancy Company*

# CONTENTS

<b>ACC History</b>	<b>3</b>
<b>ACC Activities</b>	<b>4</b>
<b>ACC Reference Projects</b>	<b>6</b>
<b>R&amp;D</b>	<b>30</b>
<b>ACC Equipment</b>	<b>31</b>
<b>Headquarters</b>	<b>33</b>
<b>ACC Organizational chart</b>	<b>34</b>
<b>Memberships - GCC Development</b>	<b>35</b>

# ACC HISTORY

**Our company, “ACC”, under the name “ETERIA MELETON AKOUSTIKIS” (ACOUSTICS CONSULTANCY COMPANY), was founded in 2000.**

**ACC is formed by a team of acousticians and engineers experts in ANV control and is interconnected internationally by a wide network of partner specialists.**

**ACC is able to give solutions to issues of any complexity related to acoustics.**

**Our objective is to offer consultancy services in noise and vibration control issues, in architectural acoustics projects, in buildings, in infrastructure, in vessels and in environmental studies related to noise and vibration control.**

**The main concern of ACC is Noise & Vibration Control and Acoustic Comfort in every aspect regarding air-borne, structure-borne, ground-borne, underwater noise and vibrations pollution.**

# ACC

# ACTIVITIES

**ACC detailed field of activities includes Building Acoustics, Infrastructure (Highways, Railway Metro Networks etc), Industrial Acoustics and Under Water Acoustics.**

**ACC provides the following services:**

- **Studies for Noise & Vibration control in buildings (recreational, domestic, industrial) and sea vessels (main engines and auxiliary equipment).**
- **Architectural and building acoustics (auditoriums, music halls, music lecture rooms, recording studios, movie theaters, theaters).**
- **Electro acoustics Design.**
- **Environmental Impact Studies for issues related to noise and vibration.**
- **Design and Application studies of noise barriers (Acoustical, Architectural, Structural).**
- **Strategic Noise Mapping.**
- **Noise Action planning for local authorities.**
- **Supervision of Acoustics, Noise and Vibration control projects.**
- **Design of Environmental Monitoring Programs and equipment specifications (N&V monitoring stations).**
- **Noise and Vibration measurements, site surveys, testing for:**
  - **Noise (industrial, occupational, environmental, maritime, transport systems, urban, short time, 8hours, 24hours)**
  - **Vibration (buildings, sea vessels, human body, machine diagnostics)**
  - **Apparent Sound Reduction Index ( $R'$  και  $R' w$ )**
  - **Reverberation Time (RT), Speech Transmissibility Index (STI)**



Acoustic Consulting for Real Estate developments, infrastructure & urban planning



Special design and engineering for vibration, seismic and blasting protection



ANV design, cost estimates



Site measurements - Testing



Underwater and Maritime Acoustics



Supervision of acoustic projects



Environmental Acoustics, Noise Mapping and Monitoring of N&V

# ACC

# REFERENCE PROJECTS HOTELS

**NOISE, VIBRATION CONTROL, BUILDING ACOUSTICS &  
ACOUSTIC COMFORT**

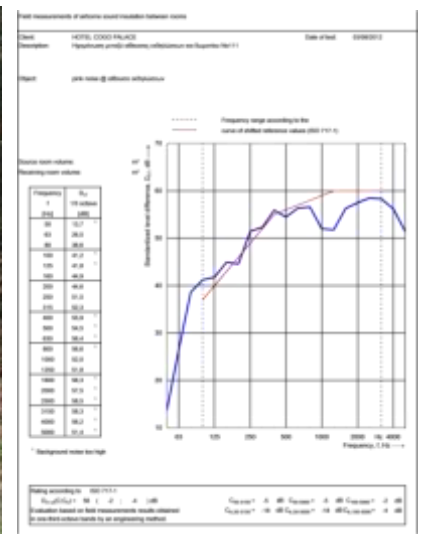


**THE MET HOTEL (THESSALONIKI)**





### ATLANTICA MIRA MARE HOTEL (CYPRUS)



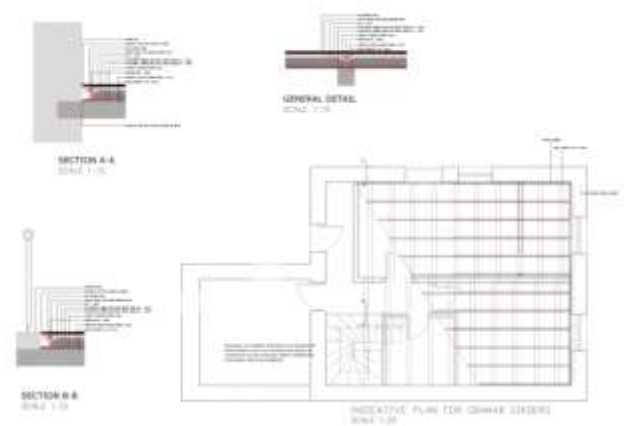
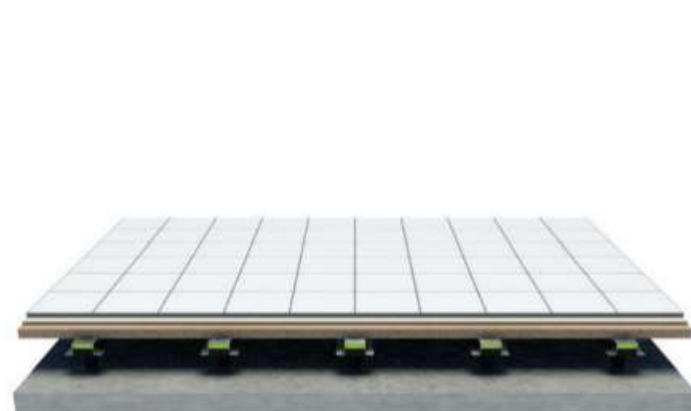
### CONGO PALACE HOTEL (ATHENS)



## HERODION HOTEL (ATHENS)



**COSTA NAVARINO LUXURY RESORTS (PELOPONNESE)**



**ACOUSTIC FLOOR**

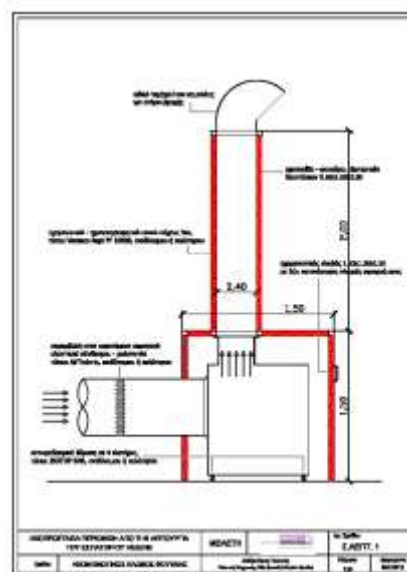


**BOUTIQUE HOTEL (IOANNINA)**



# RESTAURANTS

ACOUSTIC COMFORT, ANV CONTROL & BUILDING ACOUSTICS



VEZENE RESTAURANT (ATHENS)



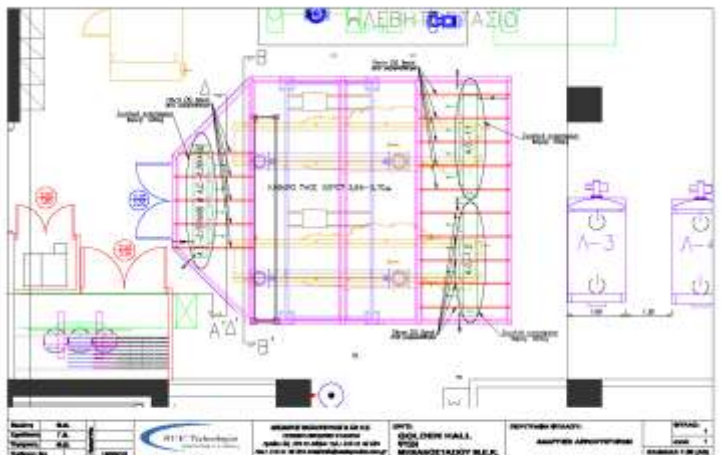
ASPRO PIATÓ (ATHENS)

# MALLS, AUDITORIUMS, THEATERS

**ANV CONTROL & ACOUSTIC COMFORT**



**TALOS MALL & MULTIPLEX CINEMA (CRETE ISLAND)**

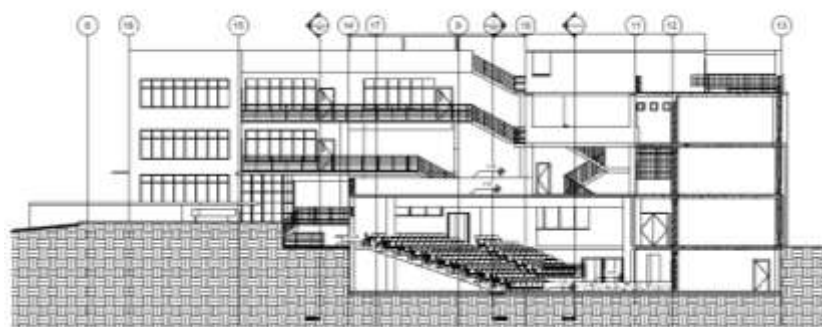


**GOLDEN HALL MALL (ATHENS)**

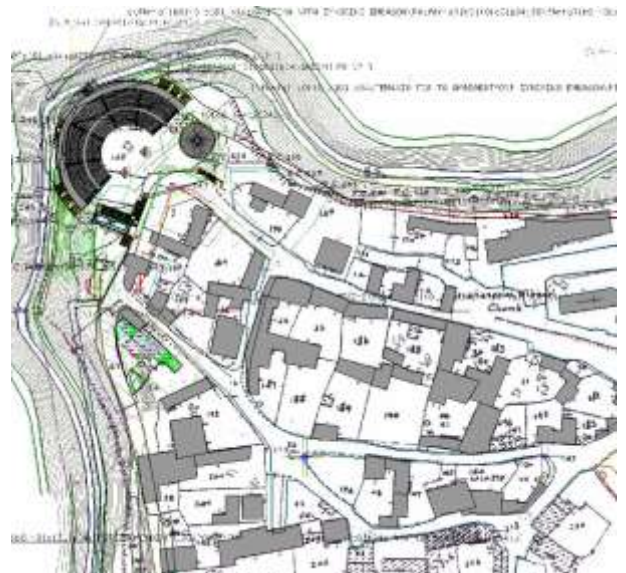
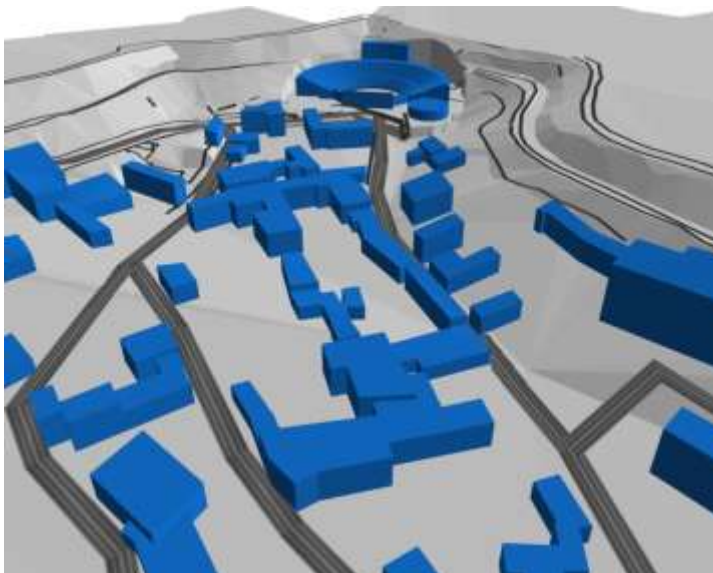




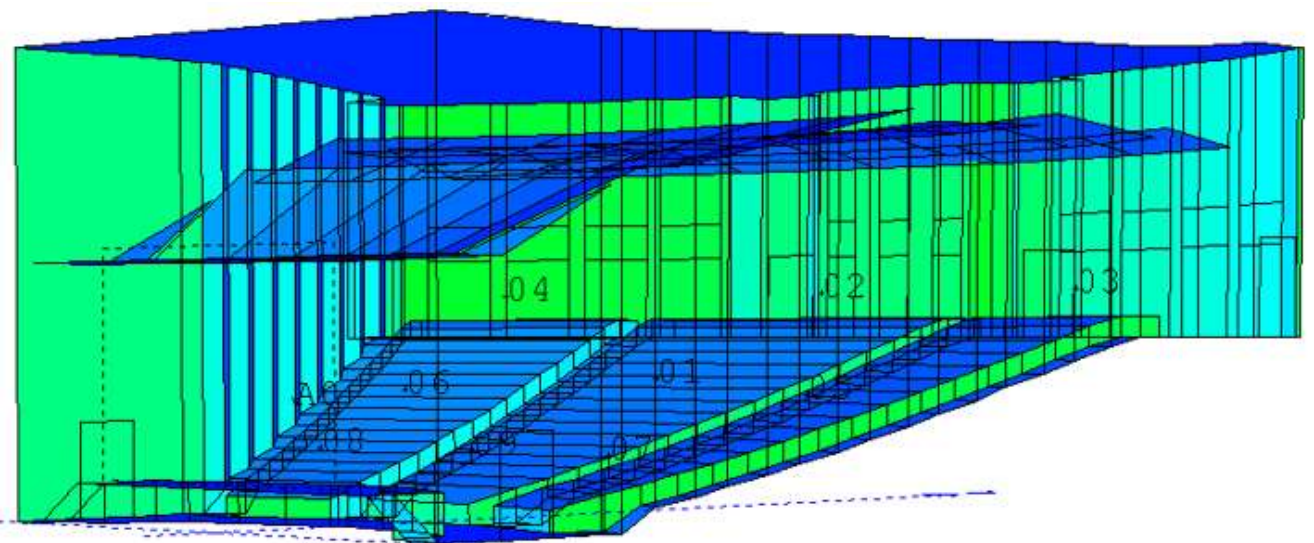
**THEATRE (ANDROS ISLAND)**



**AUDITORIUM FOR EDUCATIONAL INSTITUTE (ATHENS)**

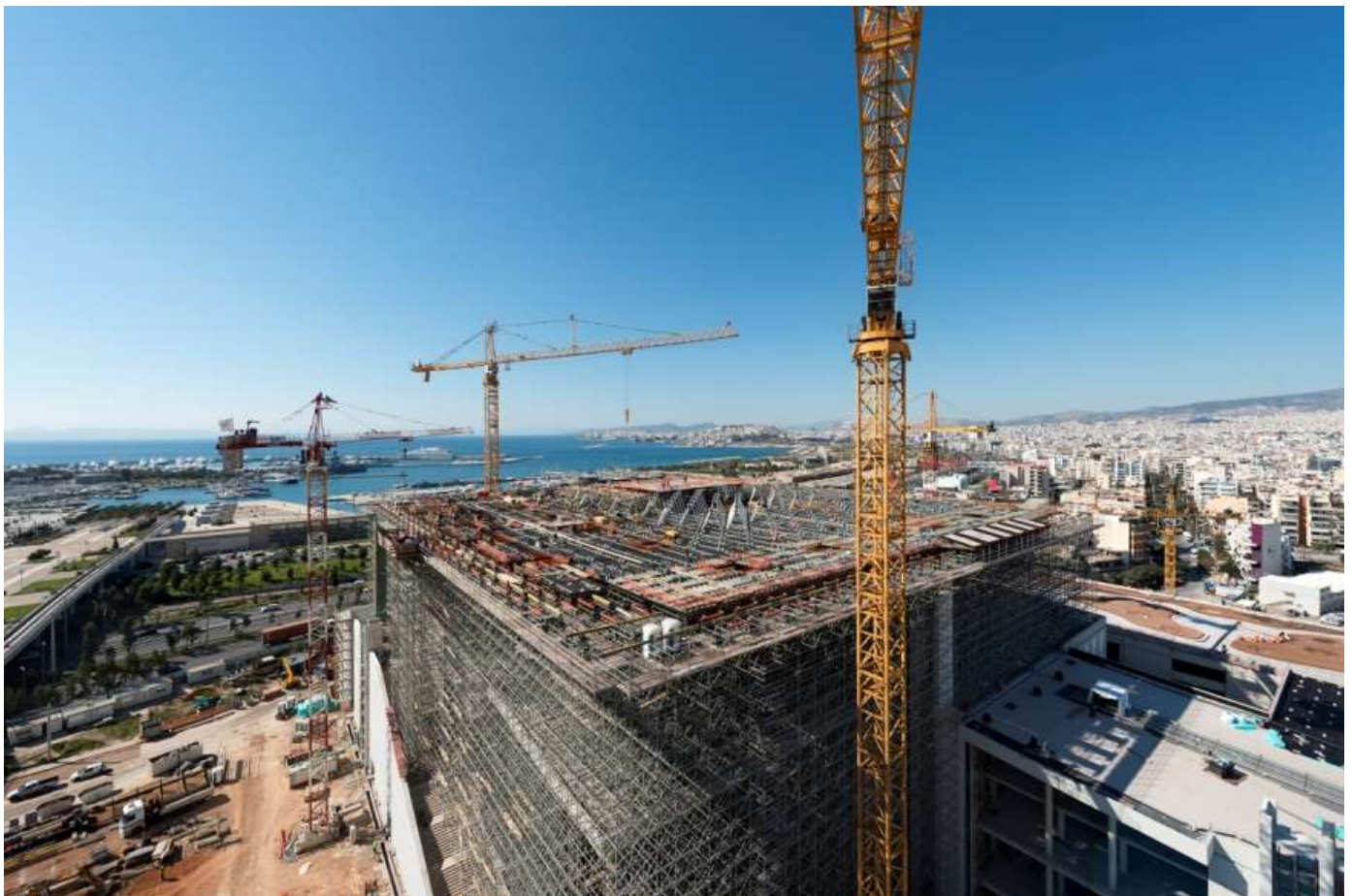


**THEATRE AT OROKLINI (CYPRUS)**



**TECHNOLOGICAL EDUCATION INSTITUTE (PIRAEUS)**





**STAVROS NIARCHOS FOUNDATION CULTURAL CENTER (PIRAEUS)**



## ANV CONTROL & ACOUSTIC COMFORT



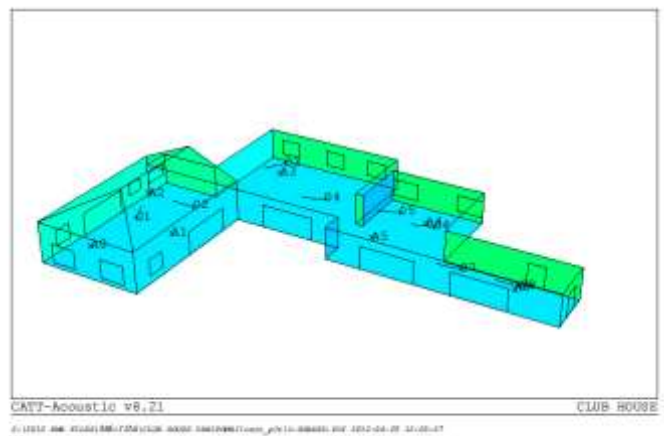
## RECORDING STUDIO (ATHENS)

# OFFICE BUILDINGS

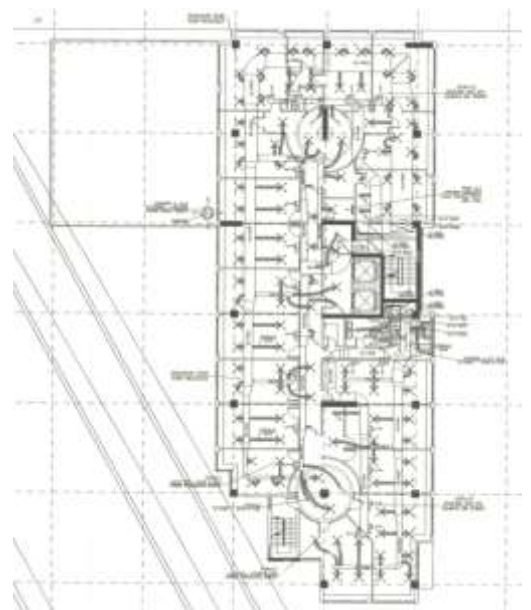
**NOISE, VIBRATION CONTROL, BUILDING ACOUSTICS &  
ACOUSTIC COMFORT**



**RENOVATION OF 4-STORY OFFICE BUILDING (ATHENS)**



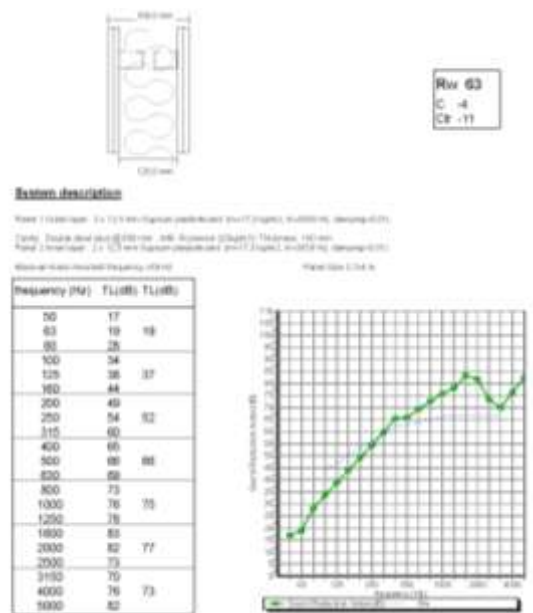
**“VARIBOBI TENNIS CLUB” SPORT CENTER**



**OFFICE BUILDING (ATHENS)**



## NOISE, VIBRATION CONTROL, BUILDING ACOUSTICS & ACOUSTIC COMFORT



A photograph of a modern, multi-story building with a white facade and large glass windows. The building features a prominent cantilevered upper floor. It is partially obscured by trees and a utility pole in the foreground. The sky is blue with some clouds.



## NARKISSON HOUSE RESIDENCES (ATHENS)

# ENVIRONMENTAL STUDIES

**STRATEGIC NOISE MAPPING, CONSULTING NOISE & VIBRATION  
IMPACT STUDIES**

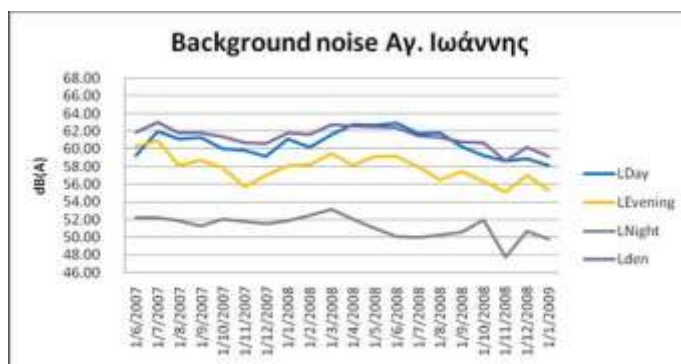
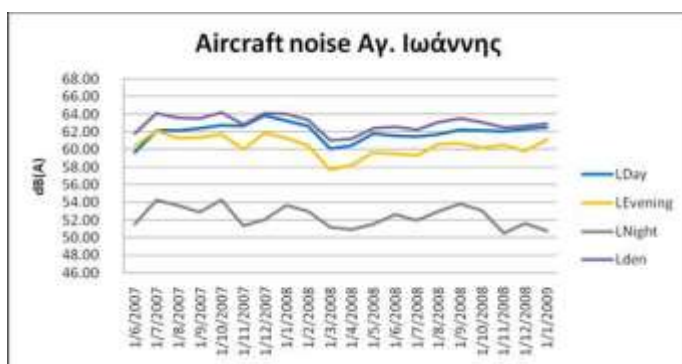
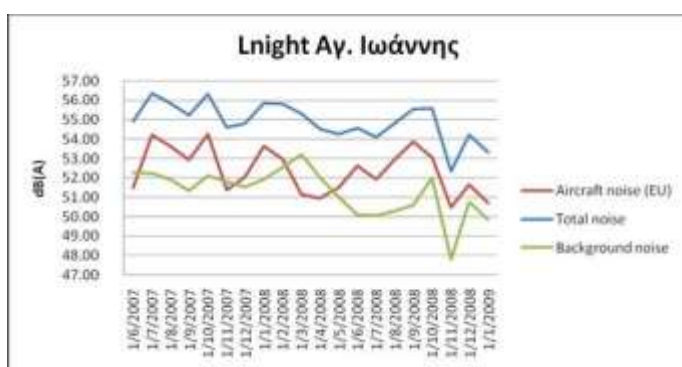


**NOISE MAP OF MUNICIPALITY (IOANNININA)**





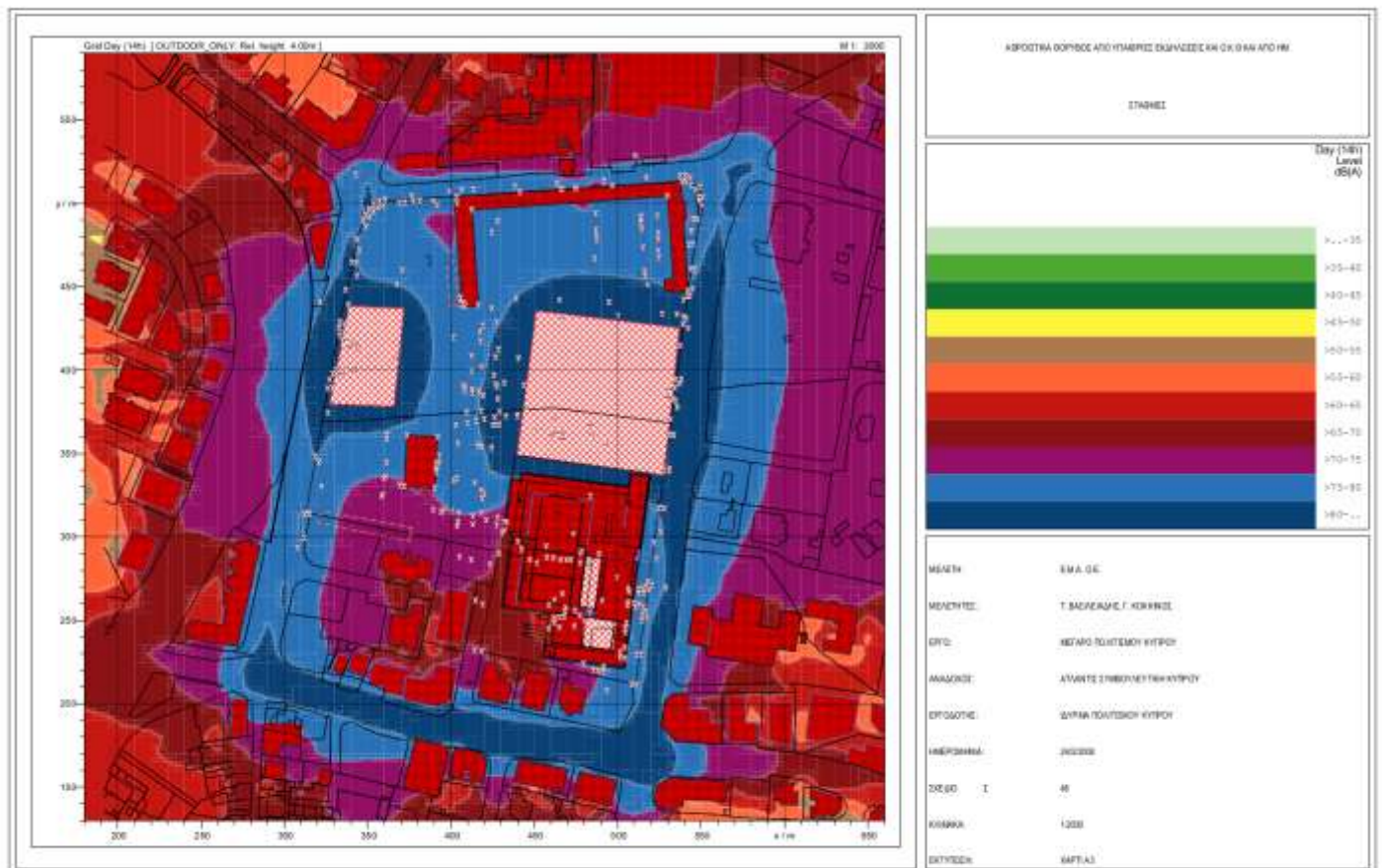
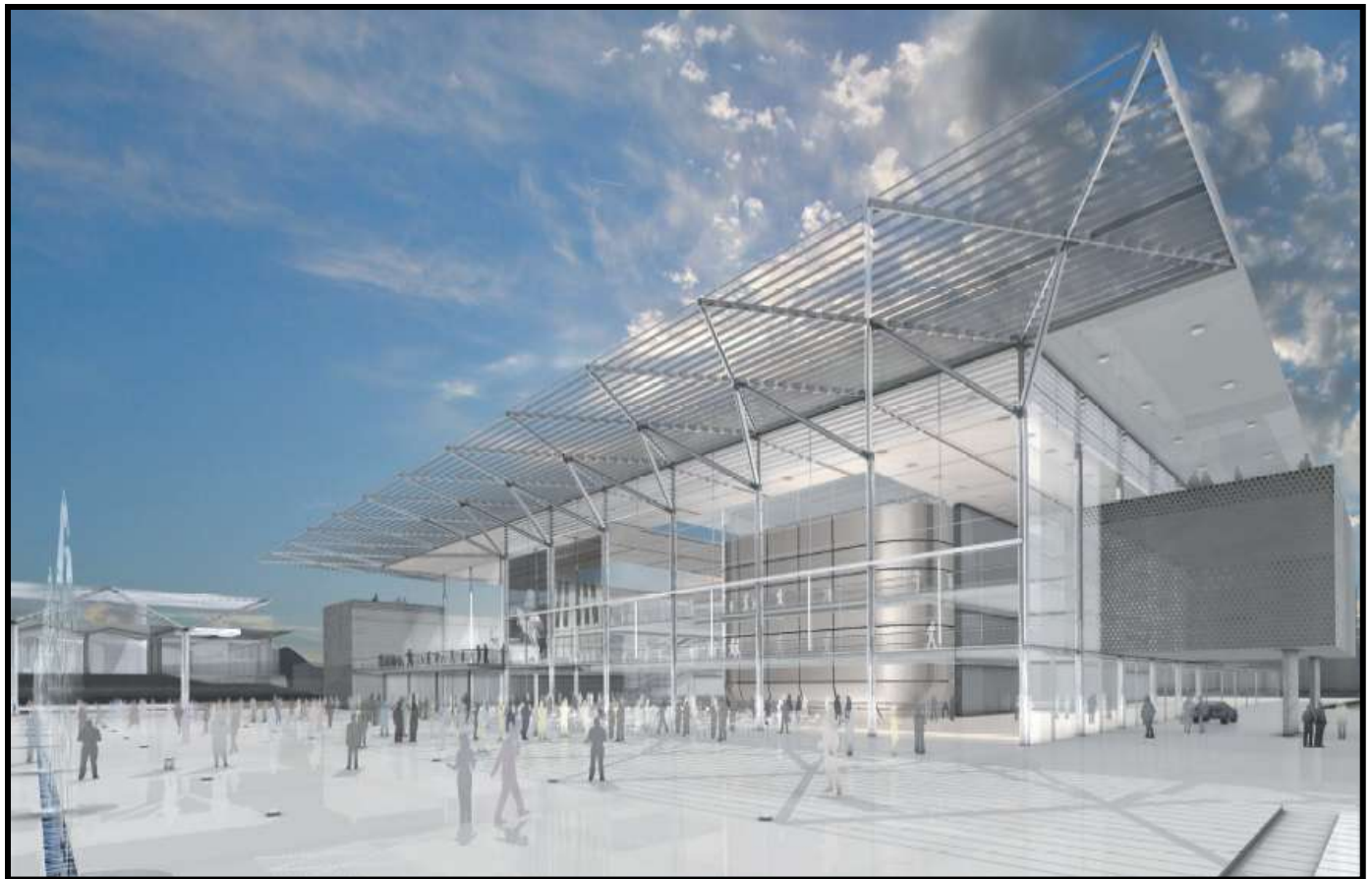
**NOISE MAP OF MUNICIPALITY (KAVALA)**



**MONITORING AIR-TRAFFIC NOISE LEVELS AS PART OF THE ACOUSTIC CONSULTANCY SERVICE FOR MUNICIPALITY (ARTEMIDA – SPATA, ATHENS AIRPORT)**





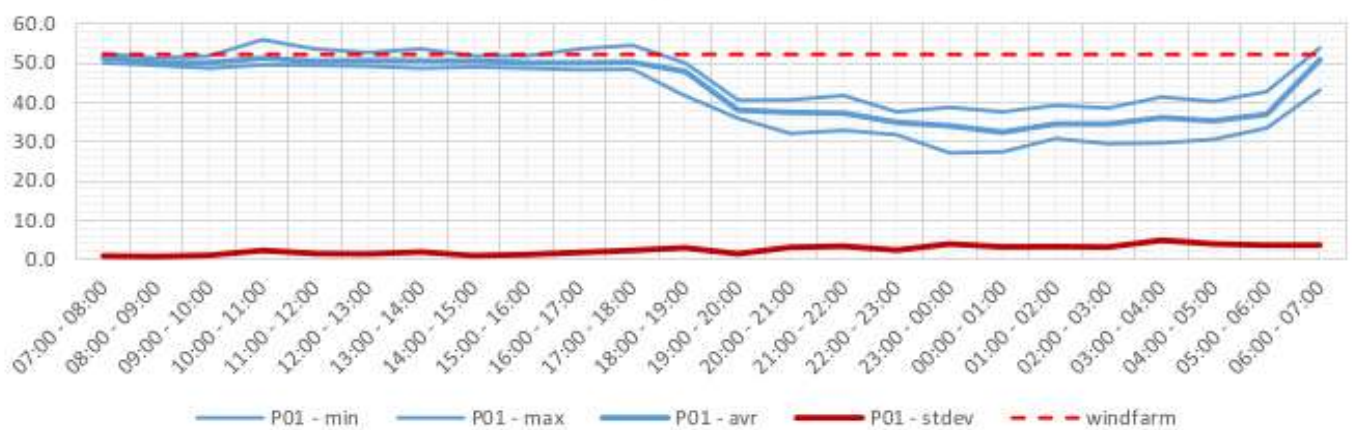


ΜΜ 6.3

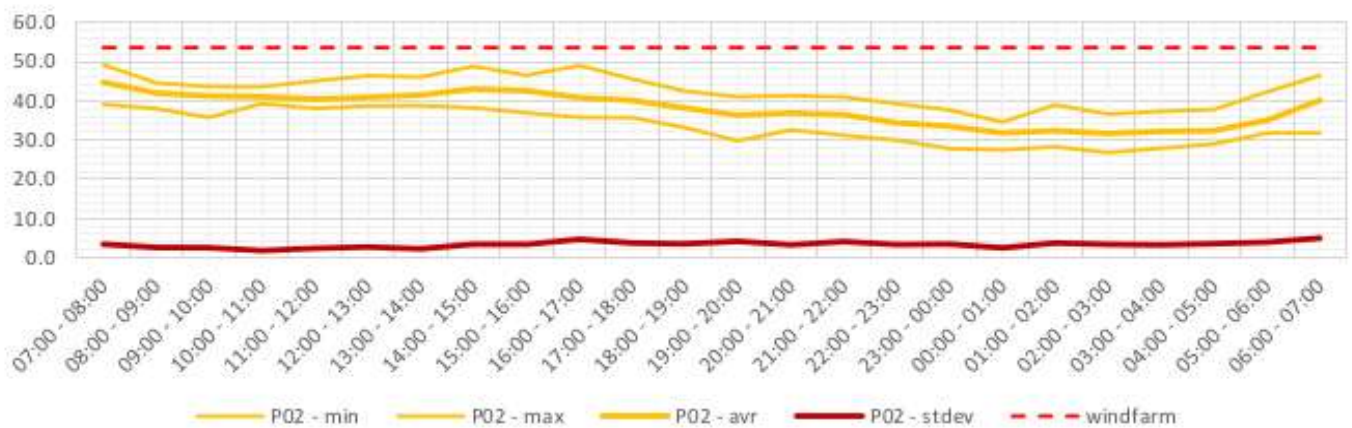
## TRAFFIC NOISE AT CYPRUS CULTURAL CENTER



LA90% - P01



LA90% - P02



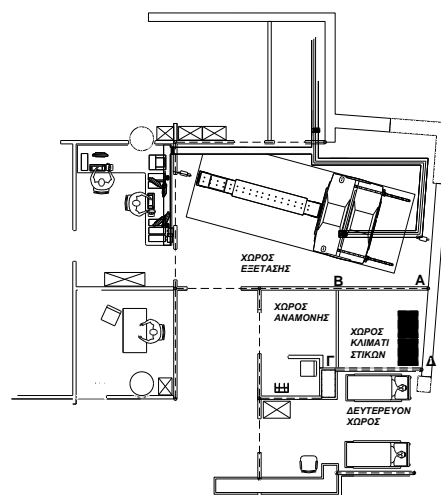
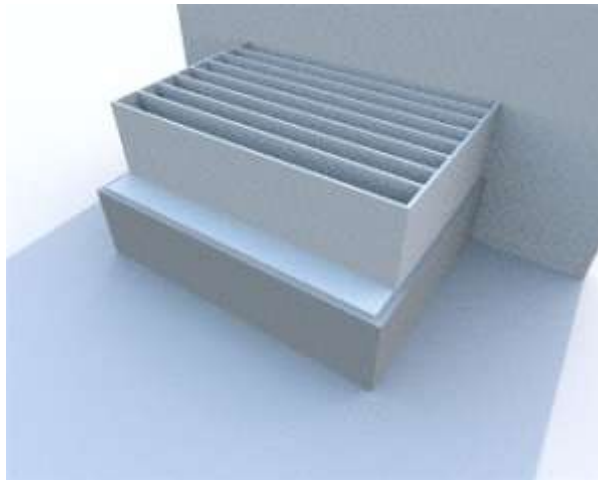


# HOSPITALS

## BUILDING ACOUSTICS & ANV CONTROL



**HATZIKOSTA HOSPITAL (IOANNINA)**



**MEDICAL AND BIOLOGICAL RESEARCH FOUNDATION OF ACADEMY (ATHENS)**



**HYGEIA HOSPITAL (ATHENS)**





# AIRPORTS

## ANV CONTROL & MONITORING



**ATHENS INTERNATIONAL AIRPORT**



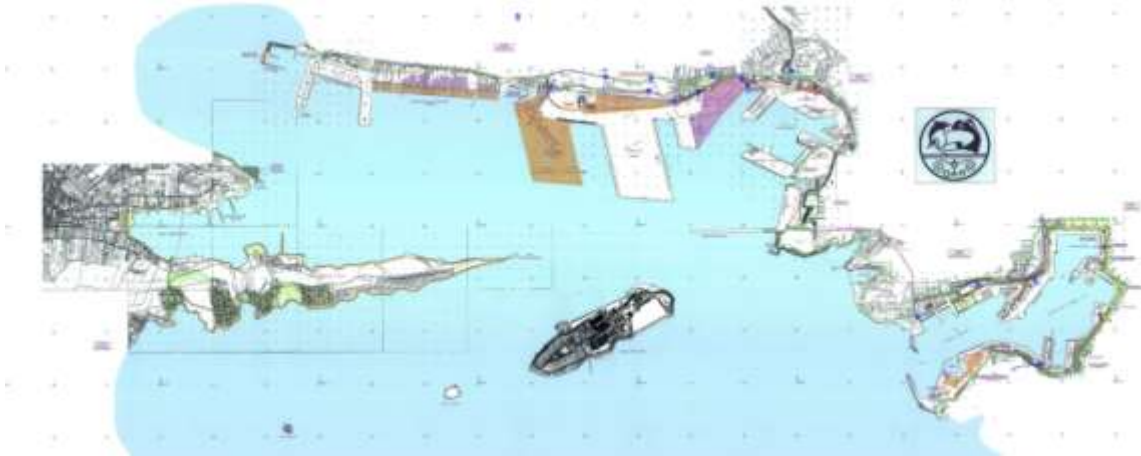
**AIRPORT OF THESSALONIKI**



**AIRPORT NEW TERMINAL (SITIA'S-CRETE)**

# PORTS

## NOISE, VIBRATION CONTROL& MONITORING



**EVALUATION OF ACOUSTIC ENVIRONMENT (PIRAEUS)**



**NOISE MAPPING (THESSALONIKI)**



# RAILWAY

## NOISE, VIBRATION CONTROL & MONITORING



**VIBRATION STUDY FOR ATHENS METRO**



**NOISE & VIBRATION STUDY FOR ATHENS  
RENOVATION OF METRO LINE 1**



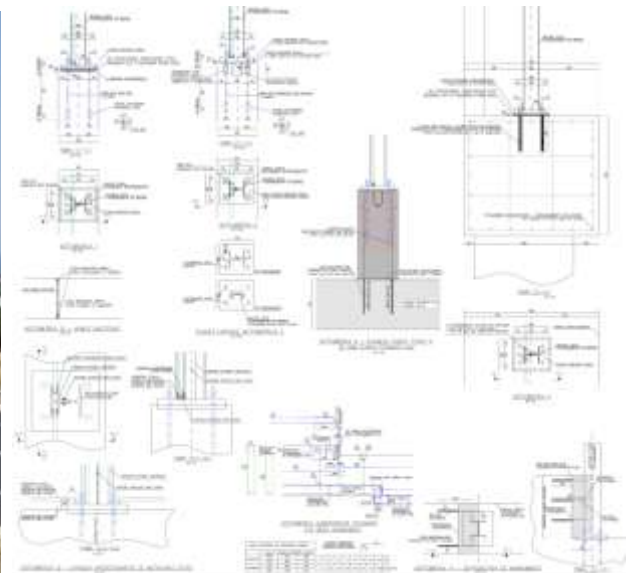
**DESIGN OF MASS-SPRING SYSTEMS FOR ATHENS METRO (LINE 1& LINE 2)**



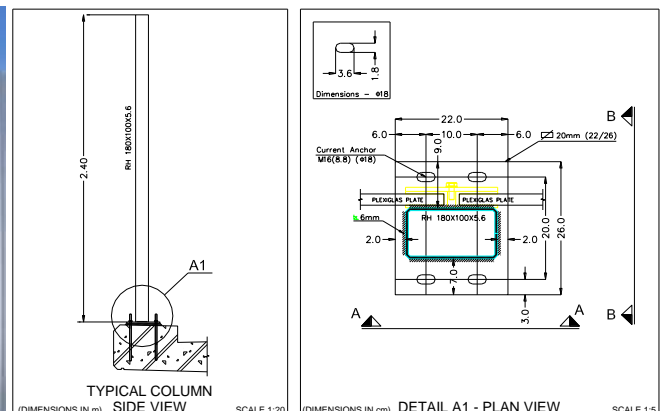
**NOISE & VIBRATION MEASUREMENTS (ATHENS METRO NETWORK, ATHENS METRO DEPOT, RAILWAY  
CORRIDOR VIII - FYROM, ATHENS TRAM NETWORK)**

# HIGHWAY

## TRAFFIC NOISE CONTROL, NOISE BARRIERS & MONITORING



**DETAIL DESIGN OF NOISE BARRIERS FOR PROTECTION FROM HIGHWAY TRAFFIC NOISE - BOAK HIGHWAY (CRETE ISLAND)**



**APPLICATION STUDY OF NOISE BARRIERS FOR BRIDGE “HARILAOS TRIKOUPIS” (RIO – ANTIRIO)**

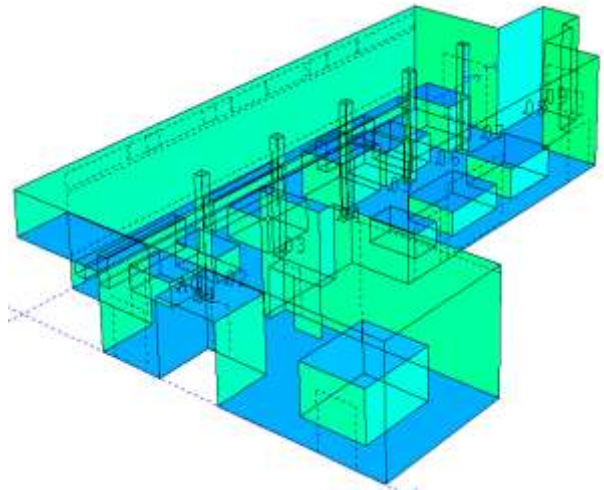


# INDUSTRY

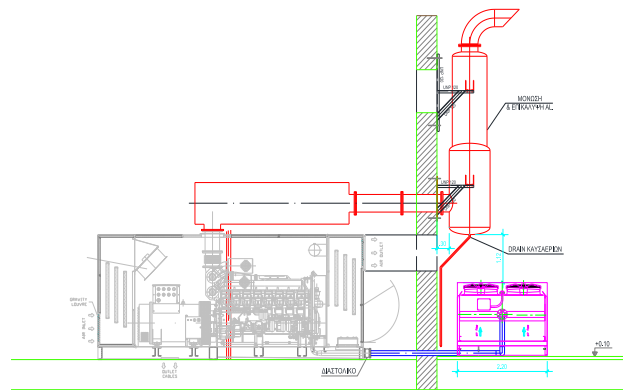
## OCCUPATIONAL NOISE, VIBRATION CONTROL & ENVIRONMENTAL NOISE MONITORING



**BLENDING PLANT SHELL (OIL & GAS INDUSTRY)**



**PHOENIX SA (PRINTING INDUSTRY)**



**KORINTHOS PIPING SA (PIPEWORKS INDUSTRY)**



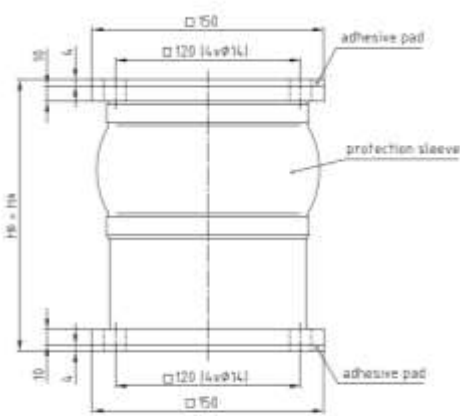


# MARITIME ACOUSTICS

## ANV CONTROL



PROTECTION FROM HYDROMASSAGE, OPERATION IN YACHT



*H<sub>0</sub>* - unloaded height ; *H<sub>1</sub>* - height at delivery

Type	CODE part no.	deflection F <sub>max</sub>	deflection F <sub>max</sub>	category 1 F <sub>1</sub> / F <sub>2</sub>	height H <sub>0</sub> mm
00V-02	3.1	40	8.00	0.97	100
00V-01	4.3	40	8.16	0.73	100

*Legend:*  
\* calculated acc. to DIN EN 10406-1

VIBRATION MEASUREMENTS OF MAIN MOTOR IN THE VESSELS (GREEK NAVY)

# R&D

## APPLICATION METHODS FOR TRAFFIC NOISE REDUCTION

The research team of the Acoustics Consultancy Company (ACC) is developing software applications approved by the General Secretariat for Research & Development (GSRD) under the National Strategic Reference Framework (NSRF) of the European Union (EU).

## STATIC RETROFITTING OF EXISTING BUILDINGS

Several public or private sectors' buildings (i.e. Hotels, schools, hospitals etc.) are situated in seismic protection regions and often have to deal with the catastrophic results caused by the earthquakes. The protection of people and constructions from the disastrous effects of earthquakes is the objective of this program. The process of a pilot implementation acquires particular interest for the retrofit in anti seismic protection on existing building structures, inhabiting a large number of people.

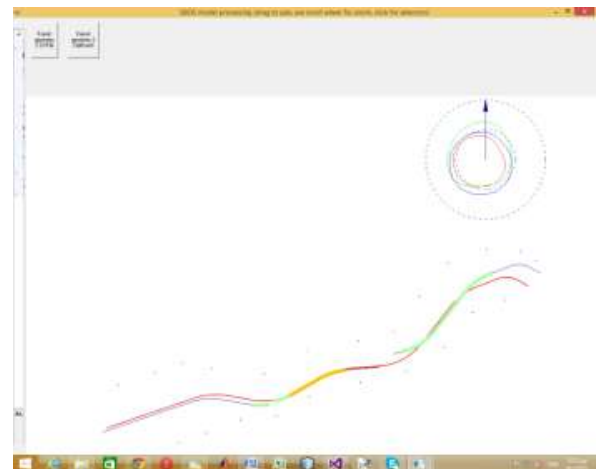
## LABORATORY TESTS OF ACOUSTIC PANELS

Reverberation room measurement of the absorption coefficient of customized perforated lightweight metallic panels with acoustic inlay for false ceiling applications.



ACC software interface showing the 'Properties of the Acoustically Effective Barrier' table. The table lists 10 barriers with columns for Barrier Description, Table No. Design, Barrier Name, Vertical Distance between Points, Previous/Modifiable Points, Length, Price, and Mean Height.

Barrier Description	Table No. Design	Barrier Name	Vertical Distance between Points	Previous/Modifiable Points	Length	Price	Mean Height
Barrier 0	12	0	0	0	0	0	0
Barrier 1	13	1	1	1	1	1	1
Barrier 2	14	2	2	2	2	2	2
Barrier 3	15	3	3	3	3	3	3
Barrier 4	16	4	4	4	4	4	4
Barrier 5	17	5	5	5	5	5	5
Barrier 6	18	6	6	6	6	6	6
Barrier 7	19	7	7	7	7	7	7
Barrier 8	20	8	8	8	8	8	8
Barrier 9	21	9	9	9	9	9	9
Barrier 10	22	10	10	10	10	10	10



# ACC

# EQUIPMENT

- **Integrating sound level meters / sound analyzers Norsonic (N110, N116, N118 and N140)**
- **Integrating sound level meters Cirrus CR-811**
- **Sophisticated, durable and well proven outdoor microphone for longterm monitoring or permanent installations.**
- **High-level noise generators including a dodecahedron omni-directional loudspeaker Norsonic (N270) with signal amplifier – signal generator N280**
- **Multi-channel signal amplifiers/conditioners and signal analysis software for measuring airborne, structure-borne, underwater noise and vibrations with the suitable sensors.**
- **Special Acoustic Software**
  - **IMMI is THE complete solution for calculation of noise and air pollutants, compliant with the current EU directives. Provides powerful tools for noise mapping, action planning and environmental management.**
  - **INSUL is a program for predicting the sound insulation of walls, floors, ceilings and windows. It has been gradually developed into a unique tool that incorporates the best of many research papers published over the last 15 years. ZORBA is a quick tool for predicting the absorption performance of porous systems with perforated facings. This tool is ideal for the investigation of acoustically critical rooms such as studios, concerts halls, class rooms, lecture theatres and others.**
  - **MEDA is a PC-based multi-channel data acquisition system. Each system is equipped with Wifel's powerful MEDA software for analysis, assessment and documentation of noise and vibration measurements, providing mobile trouble-shooting in machine diagnosis applications, for preventive and diagnostic human vibration measurements and for short- or long-term monitoring of structural vibrations.**





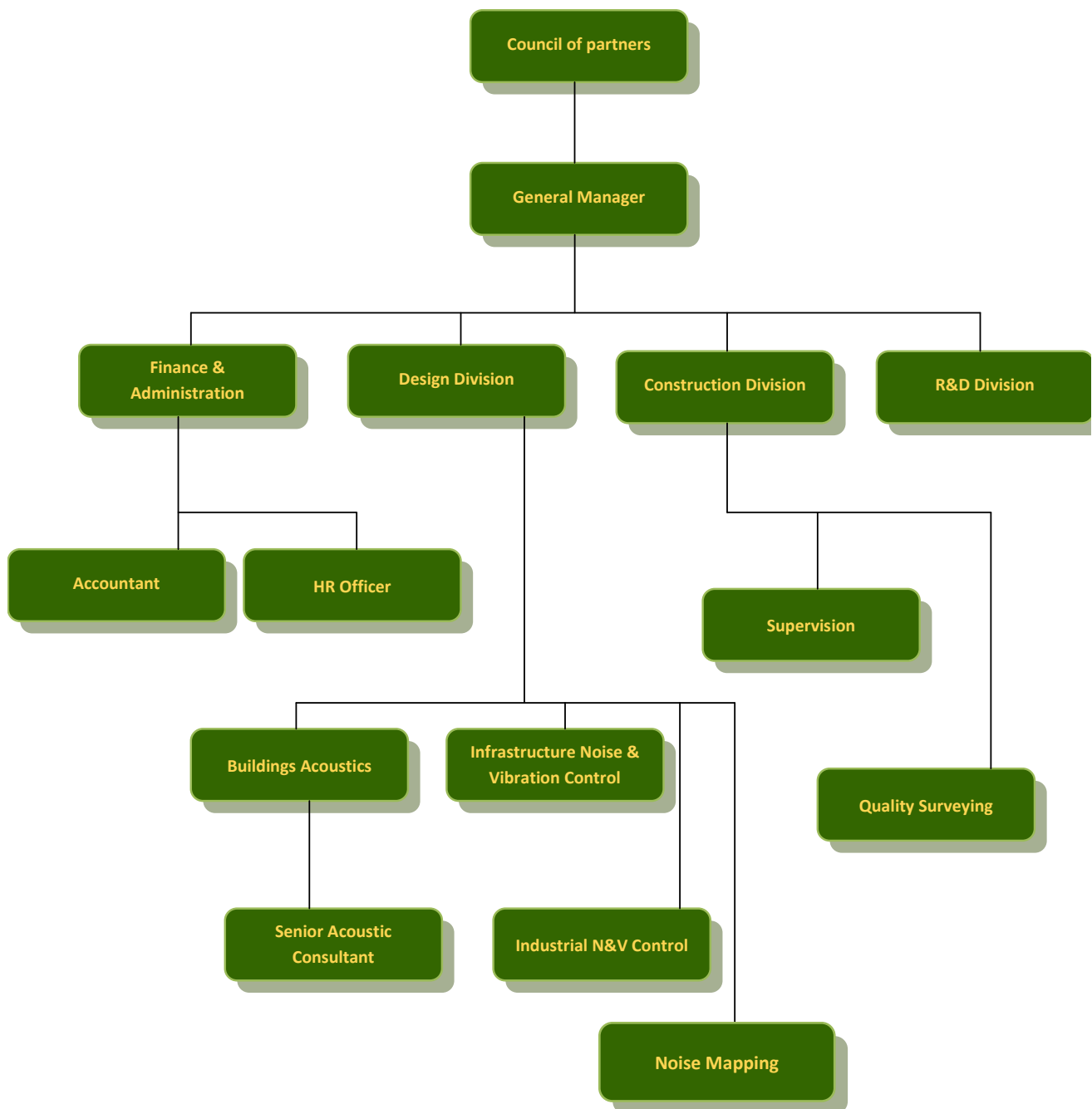
# HEADQUARTER



**Coordinate GPS**  
North: 37° 56' 56.77"  
East: 23° 51' 48.47"

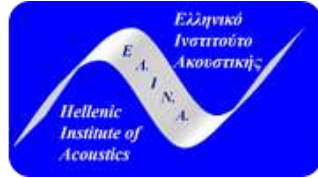
# ACC

# ORGANIZATIONAL CHART





# MEMBERSHIPS



# GCC DEVELOPMENT

**QATAR - Doha**

**KUWAIT - Kuwait City**

**OMAN - Muscat**

**UAE - Dubai**





*Acoustics Consultancy Company*

54 Spyrou Dima & Lavriou Av.  
190 02 Peania – Greece

**T** +30 210 692 1928

**F** +30 210 692 1958

**E** [info@eagroup.gr](mailto:info@eagroup.gr)

**WWW.EAGROUP.GR**