



Boosting Your

*Smoothtalker*<sup>®</sup>  
Mobile Network Signal  
Anywhere

**4G 5G LTE** Building and Mobile Network Signal Amplifiers Kits

## Available Frequencies

Band 1 1900/2100

Band 2 1800/1900MHz

Band 3 1700/1800MHz

Band 4 1700/2100MHz

Band 5 850MHz

Band 8 900MHz

Band 20 800MHz

Band 28 700MHz

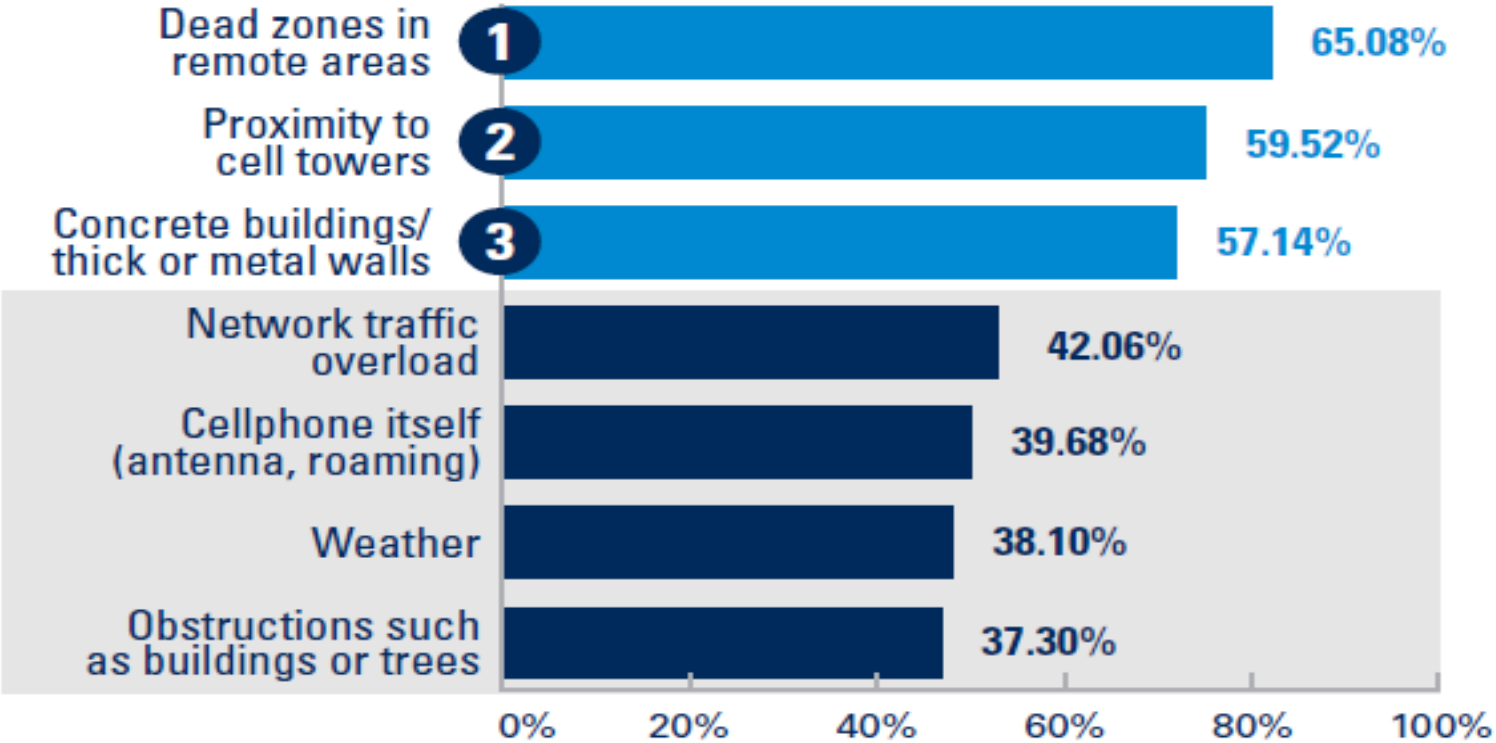
INCREASE SIGNAL BARS & DATA SPEEDS



Cellular Signal Boosters - Boosting Your Signal Anywhere

## Why do you need a Mobile Network Signal Amplifier?

### What are the top three factors that contribute to a dropped call?



Multiple answers applied

Source: *Connected World Cellular Signals Survey*

GET YOUR IOT AND BUILDING CLIENTS BOOSTED TO THE ULTIMATE IN CONNECTIVITY AND DATA SPEEDS IN THE MOST CHALLENGED SITUATIONS

Industry leading cellular amplification technology with Smoothcell Site Review to provide the 'custom connection' your clients needs in any IoT, home or building (500k sq ft) or Vehicle/Fleet application or project.

## **Large-Scale Buildings/Home**

From 500 sq ft up to 500,000 sq ft PLUS Smoothcell Global Site Review App PLUS Site Review and System Design.  
- Connectivity is NEEDED under any *metal roof, concrete walls, energy saving glass or underground parking.*

## **IoT/Cellular Modems**

Custom Direct-Connect carrier specific solutions designed for data transmission and a security purpose.

## **Vehicle/Fleet and Transportation**

Custom connectivity solutions for Transportation/Mobile/Fleet environments.

## Why Smoothtalker Mobile Network Signal Amplifiers?

- In 2001, Smoothtalker produced (in Canada) the first digital cellular booster in North America FCC and ICAN approved.
- Smoothtalker Amplifiers have STEALTH TECH technology that provides active gain control and oscillation suppression. STEALTH TECH monitors the signal environment every 3 milliseconds to keep the Amplifier working at its optimum gain and power level.
- Smoothtalker STEALTH TECH Amplifiers feature gain and signal lights which make installation easy and also provides information on how the Amplifier is performing after installation.
  - Highest sensitivity level – capture signal less up to -124dB
  - Greatest output power in the industry – Higher output power (EIRP)
  - Increase data speeds up to 30 times
  - Made In Canada – more control of our supply chain when it comes to costs and delivery
  - We can offer Custom Solutions for B2B clients very easily for Home, Building (up to 300k sq ft), Vehicle/RV/Trucks/Fleets, Marine and M2M/IoT applications
  - Dynamic Auto and Oscillation Control - protects the network and provides maximum power to the device at all times.
  - Easy to install for Mobile or Home/Building
  - Durable aircraft all aluminum construction

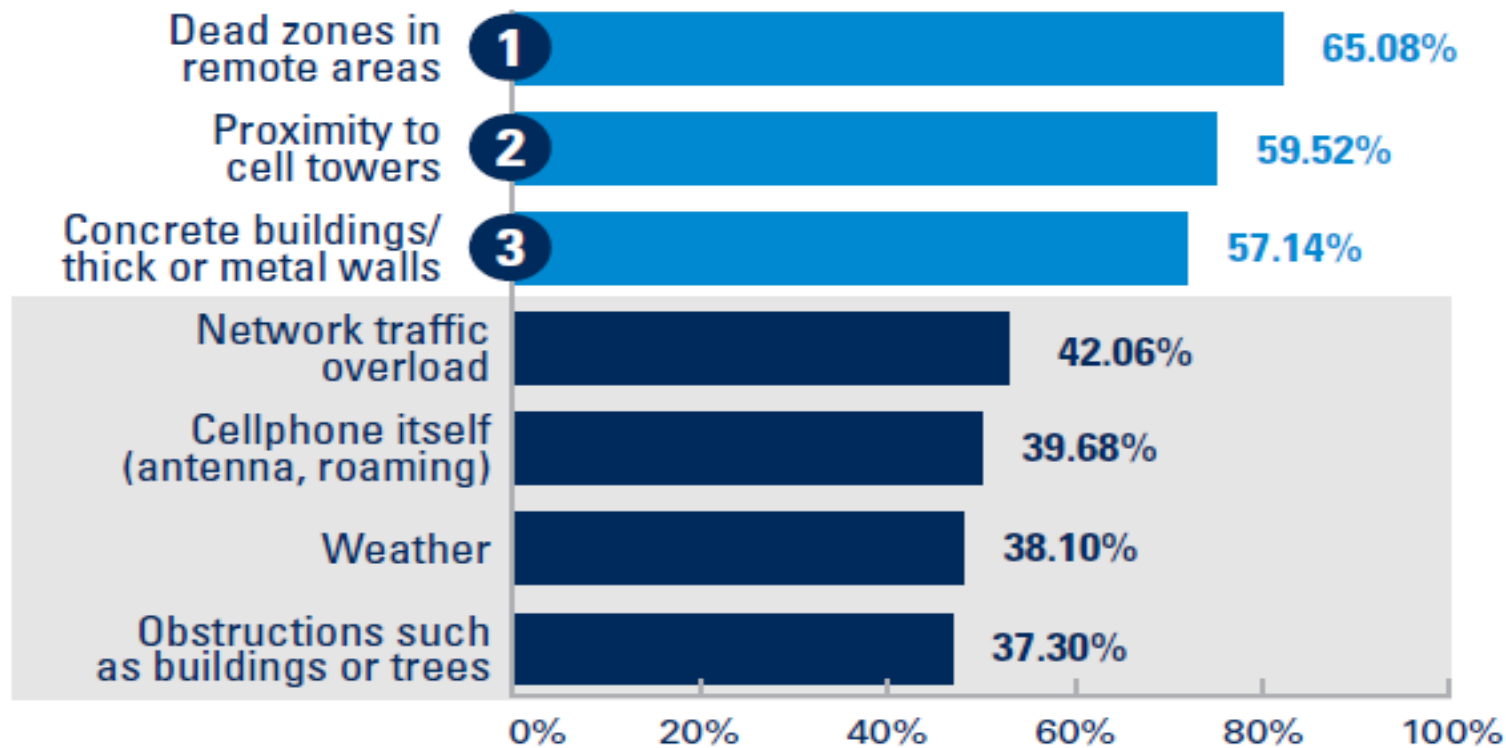


Complies with RE Directive 2014/53/EU: Radio, EMC, Safety, & Health



## Why do you need a Mobile Network Signal Amplifier?

### What are the top three factors that contribute to a dropped call?



Multiple answers applied

Source: *Connected World Cellular Signals Survey*

**INCREASE SIGNAL BARS & DATA SPEEDS**

## Smoothtalker Mobile Network Signal Amplifiers Benefits

### Highest Transmit Power. Best Receive Sensitivity.



Made in Canada Precision  
Quality Performance



Industry Canada IC ISED  
Approved



Smoothtalker Stealthtech  
Technology



Boosts RX and TX  
Network Friendly



Reduces Dropped Calls



Improves Device Battery  
Life



Multiple Users Multiple  
Devices



Connects you in poor  
signal areas



Increase Data Speeds up  
to 30 times



Easy Install



Self Monitoring and  
Adjusting



LED Signal Gain  
Indicators



## Building/Home - Stealth X6 Extreme Power Booster



Multiple  
users / phones



Reduces  
Dropped Calls



Increases data transfer  
rates up to 30 times



Connects you  
in Poor signal  
Areas



Easy Install  
Portable

The Smoothtalker Stealth X6 home and building boosters have LED signal level indicators help make installation quick and easy and are the most technologically advanced wireless cellular signal boosters made. They feature proprietary "StealthTech technology" that prevent shutdowns from poor antenna placement and changing environment. Stealth X6 boosters are recommended for areas where you have a poor outdoor and poor indoor signal and are up to 50 km from the cell tower.

### STEALTH X6 series

#### MODELS AND COVERAGE AREA

OUTSIDE CELLULAR SIGNAL LEVEL	<b>X660</b> COVERAGE AREA SQFT.	<b>X665</b> COVERAGE AREA SQFT.	<b>X670</b> COVERAGE AREA SQFT.
5 bars	5000	8000	18000
4 bars	3000	4500	10000
3 bars	1500	2500	5500
2 bars	750	1500	3500
1 bar	500	700	1500
0-1 bar	300	500	1000

\*Above info varies with terrain and cell tower settings.

Also available in 75dB & 80dB used in  
Larger Building System Design



Model Shown:  
BBCX660GP  
BBCX665GP  
BBCX670GP





# Custom Building Cellular Signal Booster System Design Solutions



## Antennas



SEMD1



SEMDP1



SEMDA2



SEMDT1



SEMDC3



SRBL1



SEMOGL

## Splitters



2-Way - F



3-Way - F



4-Way - F



2-Way - N



3-Way - N



4-Way - N

## Cables



RG6 - 10ft - 20ft - 30ft - 40ft



LMR400 - 20ft - 30ft - 50ft - 100ft





# Smoothtalker Building/Home and IoT Custom Site Review

## **FOR LARGE BUILDING AND IoT CONNECTIVITY PROJECTS: up to 500k sq ft**

Complete your client's Building or IoT data and Site location.

[www.smoothtalker.com/myhomecellsignal-free-analysis](http://www.smoothtalker.com/myhomecellsignal-free-analysis)

- The Smoothtalker Site Review Team will contact Smoothtalker Certified Integrator (SCI) to confirm PROJECT details.
- .....Then provide to SCI with a Cellular Signal Booster Solution recommendation.
- .....Provide network cellular tower map and instructions and support to ensure the best possible results.
- .....LIVE Tech Support for SCI if they experience any issues or have any questions during or post integration.
- To receive training to become a SCI and download the Smoothcell app.
- .....Please contact: [site-review@smoothtalker.com](mailto:site-review@smoothtalker.com) or call 1-877-726-3444.

Smoothcell App provides our Smoothtalker Site Review Team all the signal and network data they need to design a complete system and provide the coverage your client needs. Key Features:

**1. Real-Time Data Capture - Provides instant updates and diagnostics.**

LIVE data for the inside and outside of any building.

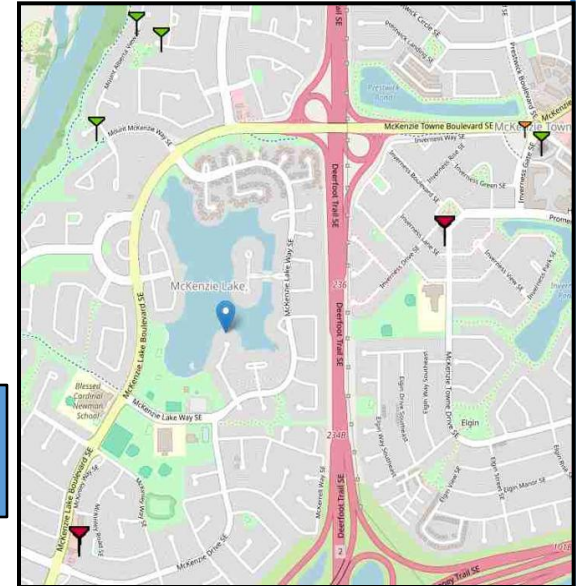
**2. Detailed Project Plans - Customizable plans for each project phase.**

ACCURATE data for Smoothtalker Site Review Team to recommend the Ultimate Smoothtalker System Design to obtain the final approval from your client.

**3. Post-Installation Support - Continuous support and troubleshooting.**

**4. Customer Convenience - Easy-to-use interface for both installers and customers.**

**5. Professional Grade Tools - High-quality tools and features for efficient installation.**



# BUILDING SITE REVIEW ANALYSIS – [www.smoothtalker.com/myhomecellsignal-free-analysis](http://www.smoothtalker.com/myhomecellsignal-free-analysis)



First Name\*

Last Name\*

First Name

Last Name

Email Address\*

Email Address

Phone Number\*

Phone Number

Enter your postal address here\*

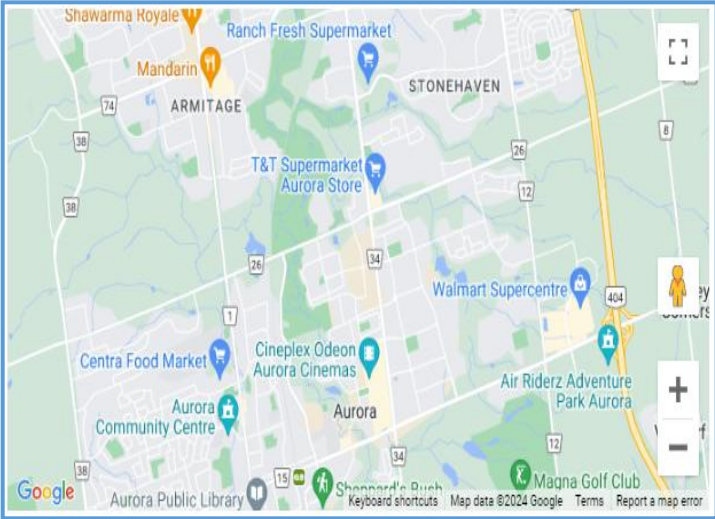
(If your address does not auto populate by Google, pls type in the nearest Town/City and move the marker to your exact location for us to get the GPS readings)

Enter your address

Lat\*: Latitude

Long\*: Longitude

Please move the below marker to your exact location if needed



Street #\*

Unit/Apt #

Street #

Unit/Apt #

Street Name\*

Street Name

City/Town\*

Postal Code/Zip Code\*

City/Town

Postal Code/Zip Code

Province/State\*

Country\*

Province/State

Country

Which carrier(s) need amplification?\*

Bell, Rogers, telus, etc?

During an active call, how many Signal Bars on your cell phone OUTSIDE of the home or building?\*

Number(s) of cellular bar on your cell phone when yo

Phone Model\*

Samsung, Apple, Nokia, etc..

Please fill field(s) to continue (Minimum 1 field is required)

House/Building(Sq Feet)		
Basement(Sq Ft)	Area To Cover	Total Area
1st Floor(Sq Ft)	Area To Cover	Total Area
2nd Floor(Sq Ft)	Area To Cover	Total Area
3rd Floor(Sq Ft)	Area To Cover	Total Area

Outside Walls Covering (i.e., Brick, Metal siding)

Brick, Metal siding?

Inside Wall Construction(i.e., Concrete, Wood, Metal)

Concrete, Wood, Metal?

Roof Materials (i.e., Metal, Asphalt, Cedar)

Metal, Asphalt, Cedar?

How high are you able to mount the outside antenna? (in feet)\*

Please enter it in feet

Additional Comments

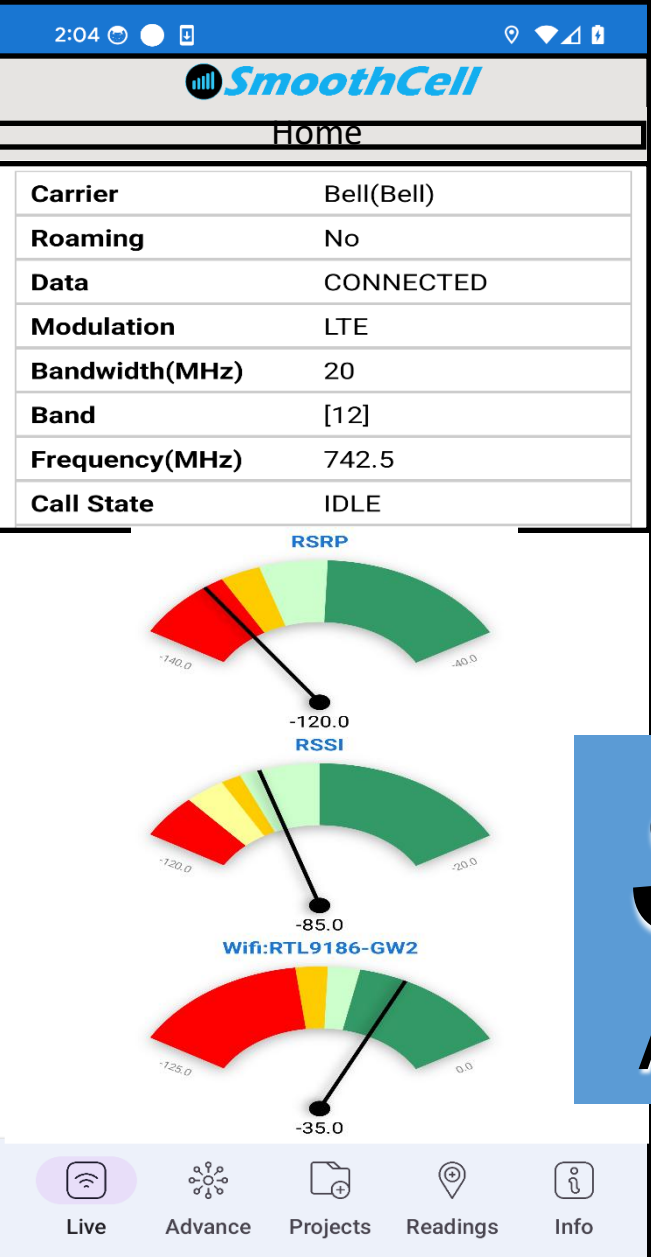
Please explain briefly...

Where did you hear about Smoothtalker?\*

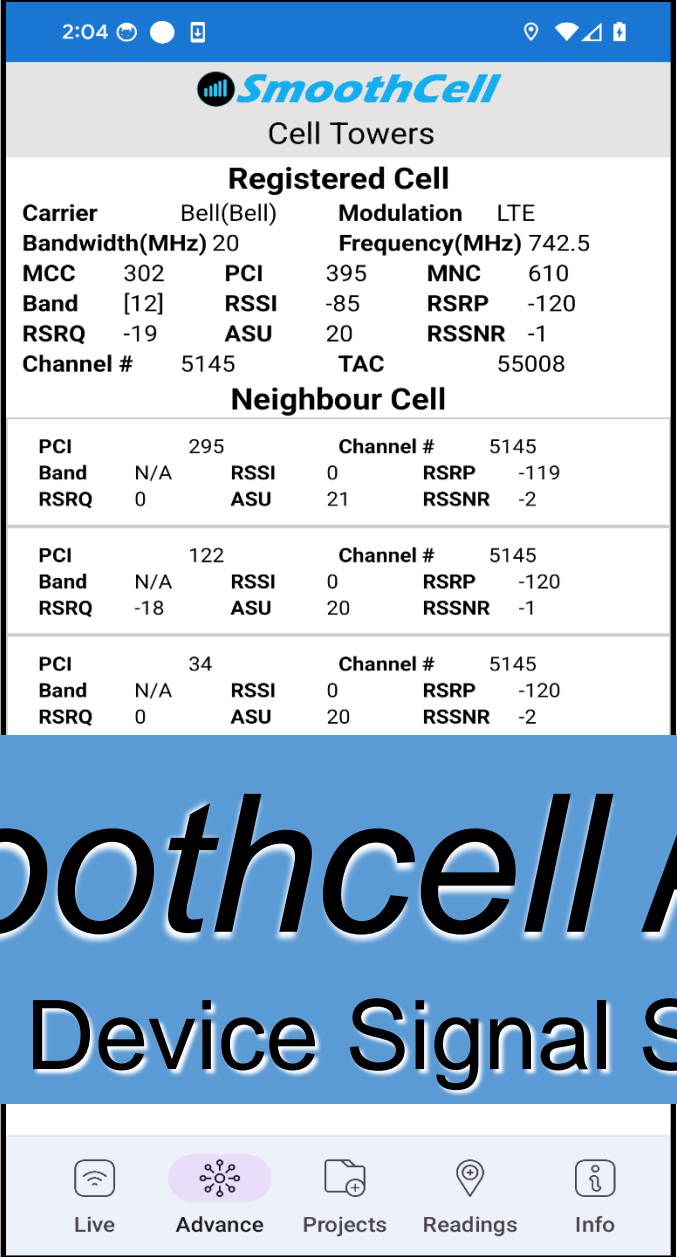
Where did you hear about Smoothtalker?

Submit

Home Screen



Connected & Nearby Towers



Signal Snap Shots



Smoothcell App  
Android Device Signal System

## My Projects

2:08

SmoothCell

Projects

 Search Here...

#1 MCI

2024-04-12 14:07

230 Earl Stewart Drive

Aurora Ontario Canada

Create new project



Live

Advance

Projects


Readings

Info

# Smoothcell App Project Creator

## Create Project Details

2:08

 SmoothCell

Project Details

Project Name\*

Site Type\*

Customer Name\*

Company Name

Address\*

230 Earl Stewart Drive

City\*

Aurora

Province

Ontario

Postal Code\*

L4G 7R2

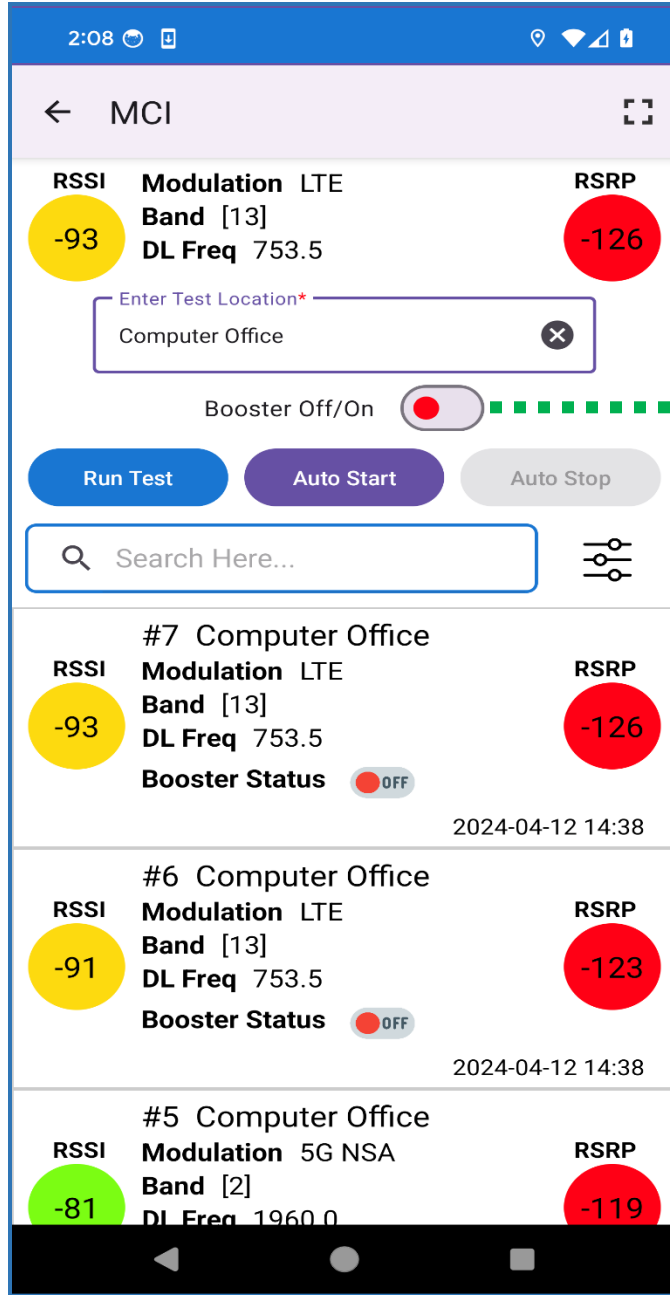
Country\*

Canada

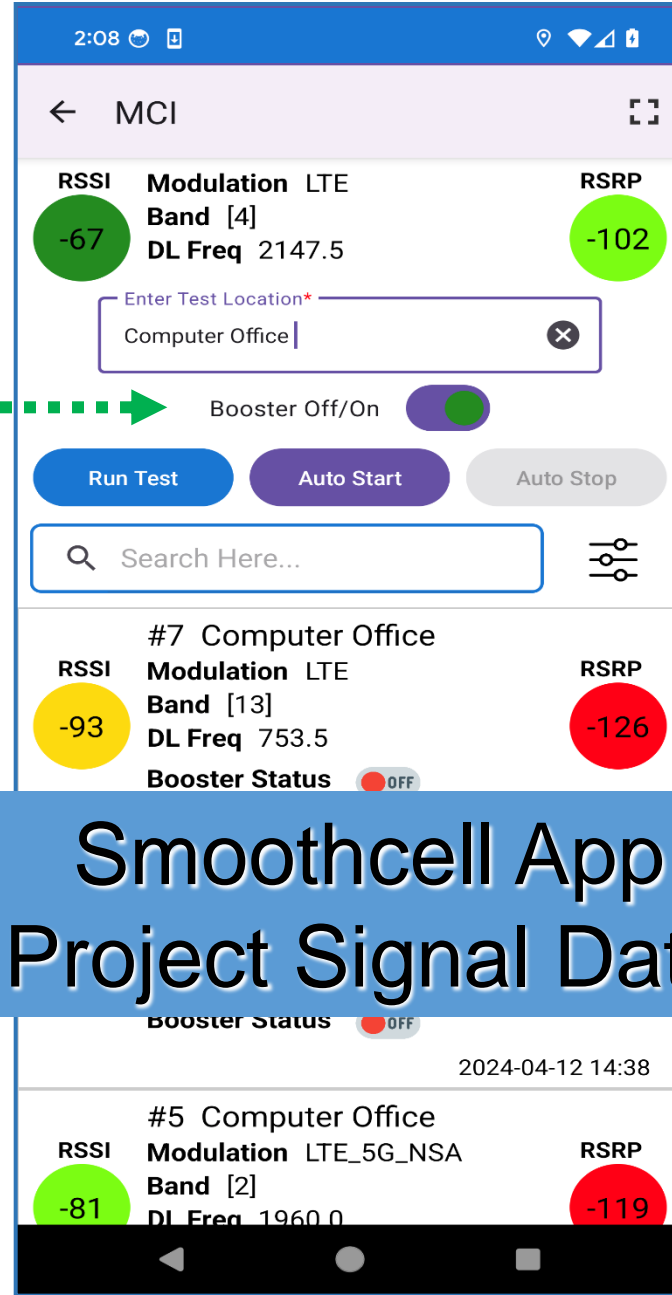
Clear

Next

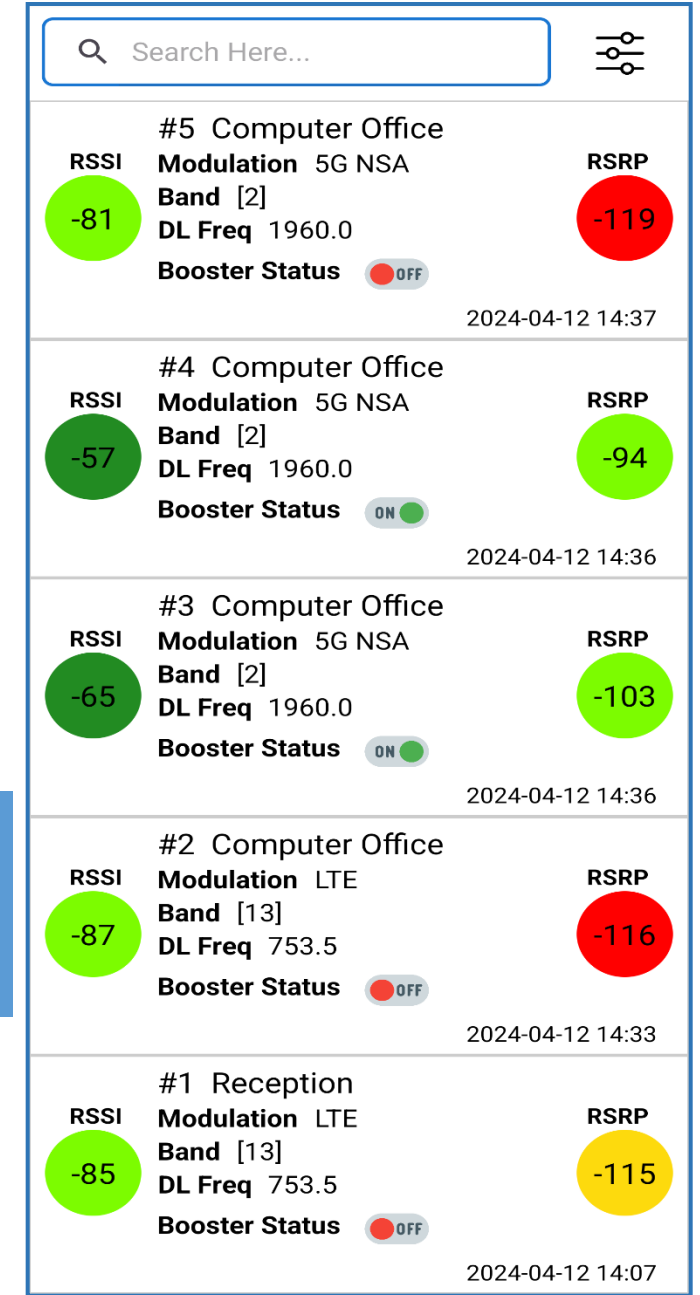
## Location Reading No Booster



## Location Reading With Booster



## Readings Summary



Smoothcell App  
Project Signal Data



Live Results

Applied Filters: Created From: 2024-04-05 Created To: 2024-04-06 User Email: info@smoothtalker.com Clear

Search

Filters 3

Bulk Actions

Columns

10

Sync Latest

Sync All

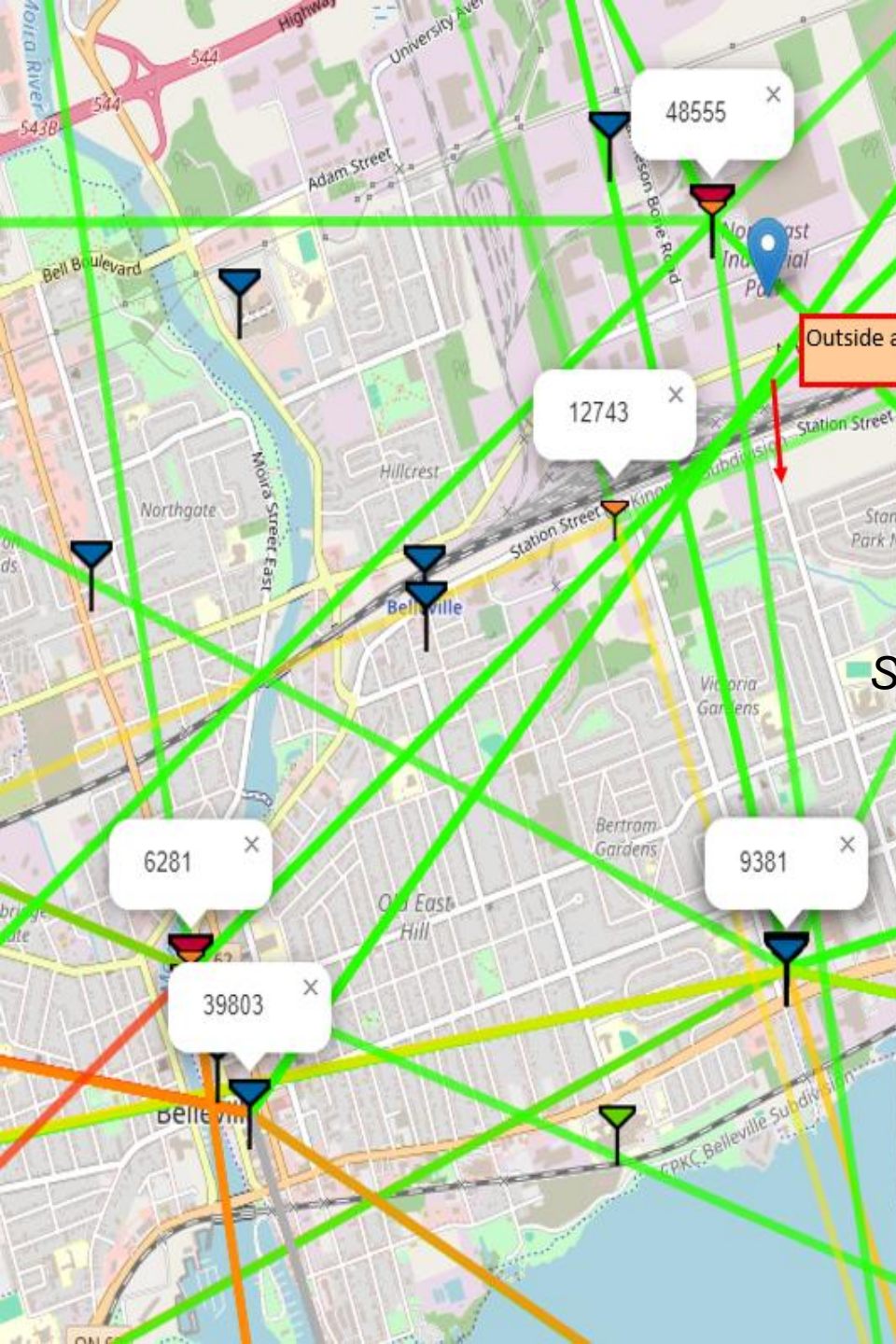
	Id	Carrier	Mod	Band	Earfcn	BW	DL Freq	Data Status	Roam	Location	Rssi	Rsrp	Rsrq	Rssnr	Call Status	Band Calculated	Wifi On/Off	Online	Bluetooth On/Off	App Version	Server Created at
<input type="checkbox"/>	94721	VIRGIN(Bell)	LTE	[2]	900		1960	NOT CONNECTED		<a href="#">44.40098210,-79.73029330</a>	-77	-109	-17	-3	IDLE	No	Yes	Yes	No	2.1	2024-04-06 14:31:02.838000
<input type="checkbox"/>	94720	VIRGIN(Bell)	LTE_CA	[2]	900		1960	CONNECTED		<a href="#">44.40098210,-79.73029330</a>	-57	-88	-10	10	IDLE	No	No	Yes	No	2.1	2024-04-06 14:31:02.822000
<input type="checkbox"/>	94719	VIRGIN(Bell)	LTE	[12]	5145	[5, 5, 20]	742.5	NOT CONNECTED		<a href="#">44.40098210,-79.73029330</a>	-79	-108	-14	-1	OFF_HOOK	No	Yes	Yes	No	2.1	2024-04-06 14:31:02.806000
<input type="checkbox"/>	72329	VIRGIN(Bell)	LTE	[2]	900		1960	NOT CONNECTED		<a href="#">44.40094230,-79.73031730</a>	-77	-109	-17	-3	IDLE	No	Yes	Yes	No	2.1	2024-04-05 20:29:33.194000
<input type="checkbox"/>	72328	VIRGIN(Bell)	LTE	[2]	900		1960	NOT CONNECTED		<a href="#">44.40094230,-79.73031730</a>	-81	-110	-16	-2	IDLE	No	Yes	Yes	No	2.1	2024-04-05 20:29:31.315000
<input type="checkbox"/>	72327	VIRGIN(Bell)	LTE	[2]	900		1960	NOT CONNECTED		<a href="#">44.40094230,-79.73031730</a>	-79	-112	-17	-2	IDLE	No	Yes	Yes	No	2.1	2024-04-05 20:29:28.265000
<input type="checkbox"/>	72326	VIRGIN(Bell)	LTE	[2]	900		1960	NOT CONNECTED		<a href="#">44.40094230,-79.73031730</a>	-81	-114	-16	-1	IDLE	No	Yes	Yes	No	2.1	2024-04-05 20:29:27.858000
<input type="checkbox"/>	72325	VIRGIN(Bell)	LTE	[2]	900		1960	NOT CONNECTED		<a href="#">44.40094230,-79.73031730</a>	-81	-114	-16	-1	IDLE	No	Yes	Yes	No	2.1	2024-04-05 20:29:25.630000
<input type="checkbox"/>	72323	VIRGIN(Bell)	LTE_CA	[2]	900		1960	CONNECTED		<a href="#">44.40094230,-79.73031730</a>	-57	-88	-10	10	IDLE	No	No	Yes	No	2.1	2024-04-05 20:29:25.532000
<input type="checkbox"/>	72322	VIRGIN(Bell)	LTE	[12]	5145	[5, 5, 20]	742.5	NOT CONNECTED		<a href="#">44.40094230,-79.73031730</a>	-79	-108	-14	-1	OFF_HOOK	No	Yes	Yes	No	2.1	2024-04-05 20:29:25.506000

- ☐ All Columns
- ☒ Id
- ☐ User email
- ☒ Carrier
- ☒ Mod
- ☒ Band
- ☒ Earfcn
- ☒ BW
- ☒ DL Freq
- ☒ Data Status
- ☒ Roam
- ☐ Latitude
- ☐ Longitude
- ☒ Location
- ☒ Rssi
- ☒ Rsrp
- ☒ Rsrq
- ☒ Rssnr
- ☐ Asu
- ☐ Mnc
- ☐ Mcc
- ☐ Pci
- ☒ Call Status
- ☒ Band Calculated
- ☒ Wifi On/Off
- ☒ Online

Showing 1 to 10 of 2481 results

Smoothcell  
Live Signal Capture





Outside antennas to point twr#9381

Smoothtalker Certified Installers

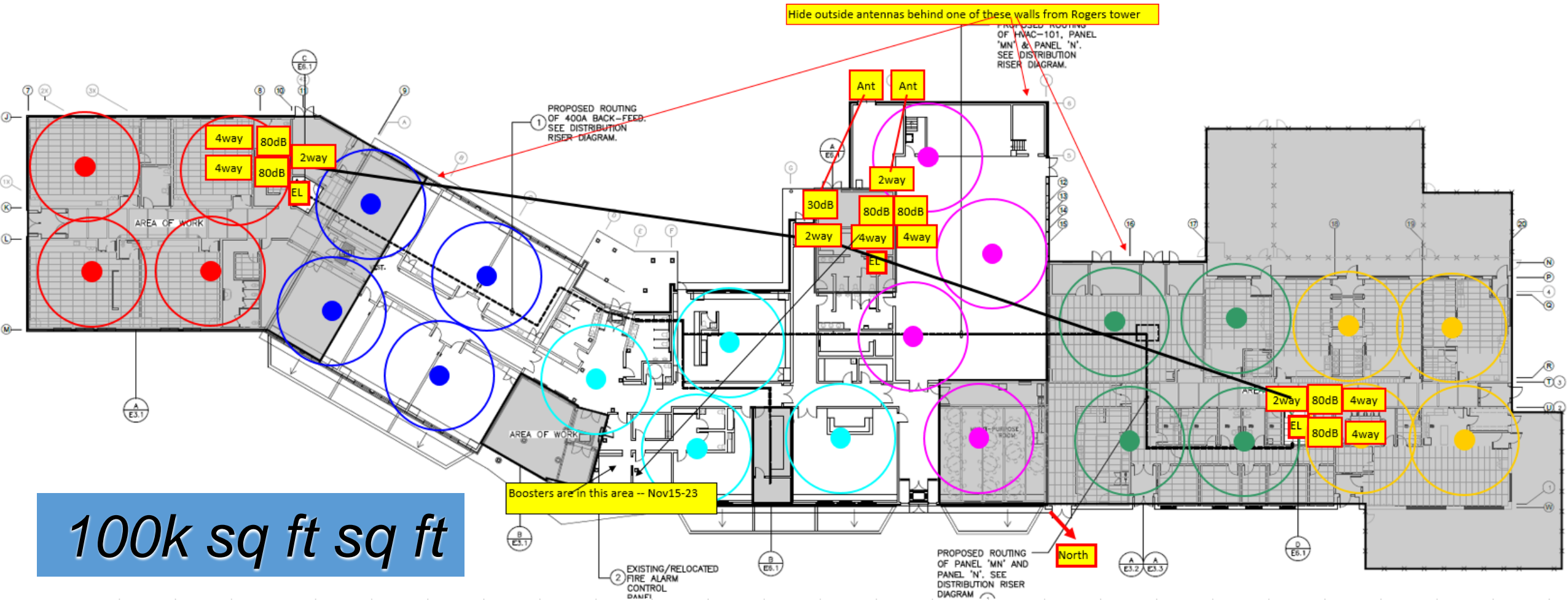
Need to mount outside antennas on south side of the building to protect from high power of Rogers tower located 340m north of building.

# Smoothcell Project Location Signal Analysis



# Smoothcell

## Project Booster Layout Analysis

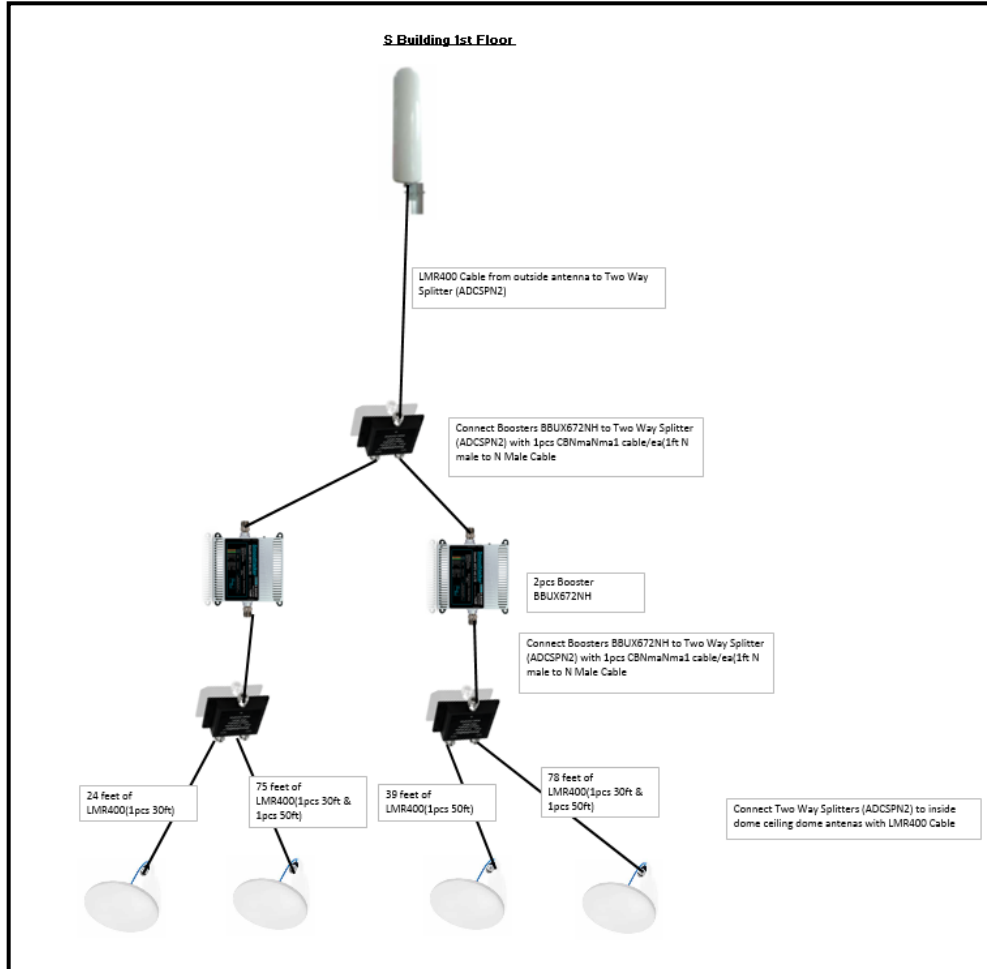




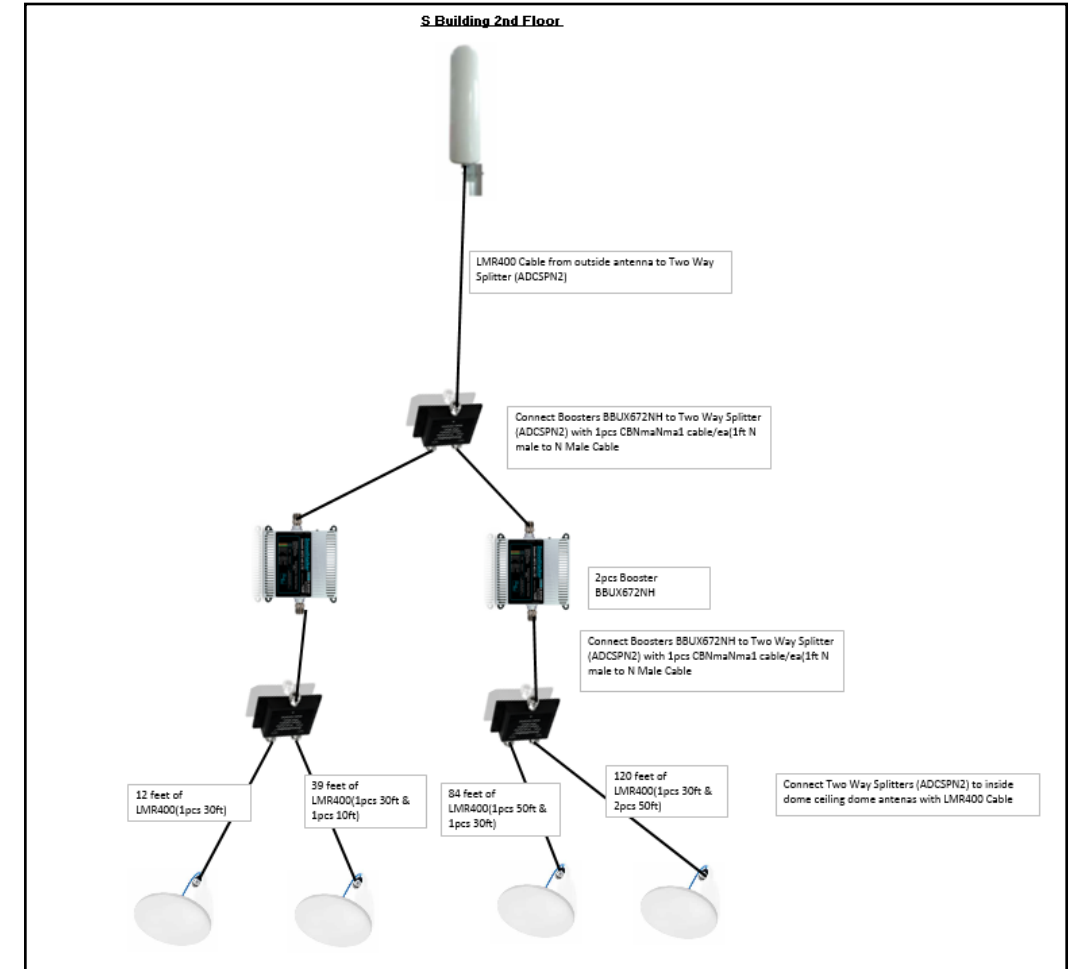
## Line Drawings – Building S



### Building S – 1<sup>st</sup> Floor



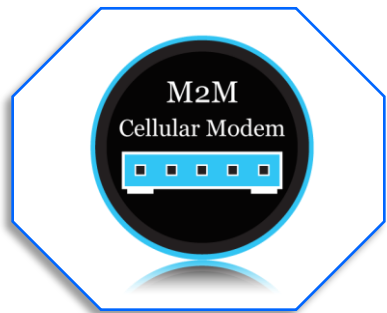
### Building S – 2<sup>nd</sup> Floor



# Smoothcell

## Project Suggested BOM

<u>SKU</u>	<u>Qty</u>	<u>Floors</u>	<u>Total Qty</u>	<u>MSRP/Ea</u>	<u>MSRP/Ext</u>	<u>Description</u>
BBCX680NH	14	1	14	\$ 2,929.99	\$ 41,019.86	Stealth X6-80dB booster with AC power source
BTX630ILPoe	14	1	14	\$ 399.99	\$ 5,599.86	Stealth X6-30dB line amp with PoE power source
DCH24VPoe	14	1	14	\$ 39.99	\$ 559.86	PoE Power Source
ADCSPN3	5	1	5	\$ 119.99	\$ 599.95	3-way splitter
ADCSPN4	14	1	14	\$ 129.99	\$ 1,819.86	4-way splitter
SEMDA2NS	5	1	5	\$ 129.99	\$ 649.95	Outdoor Arrow antenna
SEMDC3NS	55	1	55	\$ 129.99	\$ 7,149.45	Indoor ceiling dome or panel antennas
CBNmaNma1	14	1	14	\$ 36.99	\$ 517.86	1FT booster to splitter input cable
ADCR1082	55	1	55	\$ 24.99	\$ 1,374.45	N Male crimp connector
ADCR1083	55	1	55	\$ 24.99	\$ 1,374.45	N Female crimp connector
CBLMBulkFt (ft) + 5%	4824	1	4824	\$ 2.49	\$ 12,011.76	4824 LMR400 cable bulk
					\$ 72,677.31	



# Stealth M2M X6 15dB Direct Connect Booster



For use with single  
M2M device



Improves Modem  
poor indoor signal



Increases data transfer  
rates up to 30 times



Boosts RX and TX  
Network friendly

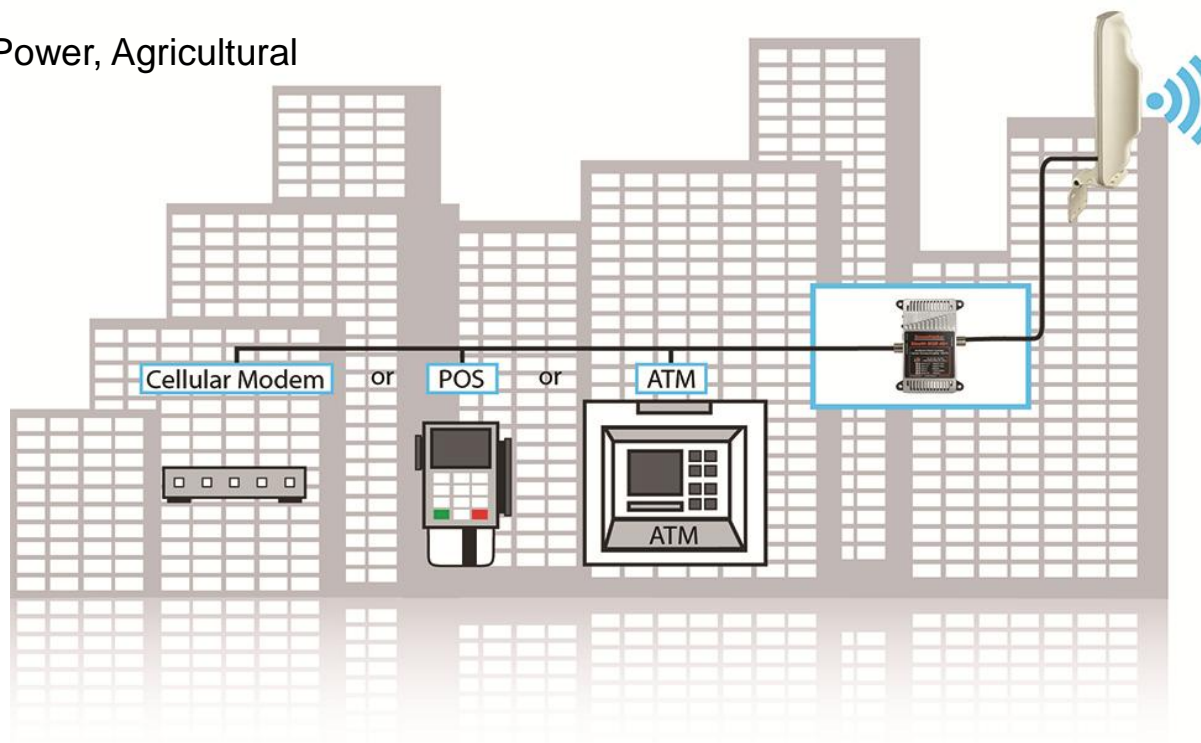


Easy Install  
Portable

This booster is designed for use with cellular devices such cellular modems, data cards or any machine to machine device. The booster will enable fast reliable data connections in locations with poor data cellular coverage. Connect up to 50 km from the nearest cellular tower.

## Custom IoT Solutions for any application

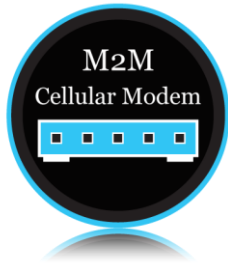
- Meters – Oil and Gas, Energy/Power, Agricultural
- Security Systems
- Cameras, CCTV
- Wind Mill Towers
- Solar Panels
- Fleet Tracking
- Vending Machines
- ATM



**Model Shown –BTUX615M1481H**

Optional outdoor antennas available.





## Stealth M2M X6 15dB Direct Connect Booster Models



For use with single  
M2M device



Improves Modem  
poor indoor signal



Increases data transfer  
rates up to 30 times

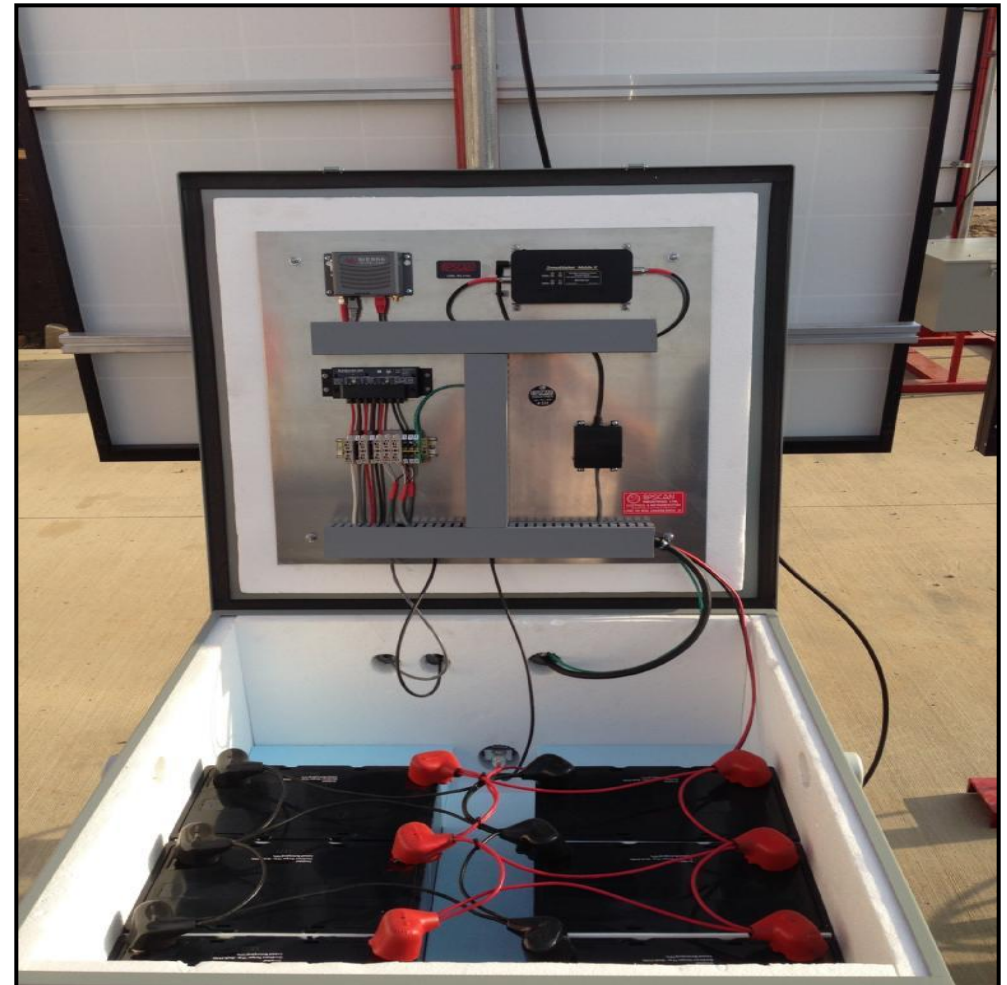


Boosts RX and TX  
Network friendly



Easy Install  
Portable

- Mobile Network Modems and Gateways
  - Meters – Oil and Gas, Energy/Power, Agricultural
  - Security Systems
  - Cameras, CCTV
  - Wind Mill Towers
  - Solar Panels
  - Fleet Tracking
  - Vending Machines
  - ATM
- Optional power sources
- Optional connectors - SMA, TS9, N, F, etc.
- Huge Volumes + 1,000 units







CAR

# VEHICLE / FLEET Mobile X6 – 30, 50, 53Db Extreme Booster



Multiple  
users / phones



Reduces  
Dropped Calls



Increases data transfer  
rates up to 30 times

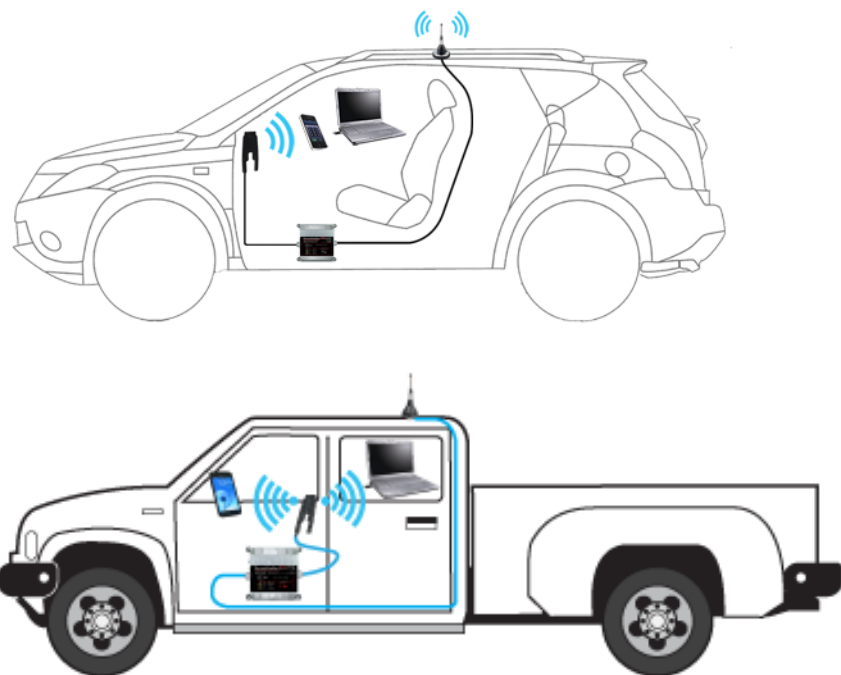


Connects you  
in Poor signal  
Areas



Easy Install  
Portable

Mobile X6 is a wireless booster that does not require a physical connection to the cell phone or cellular data device. Mobile X6 has 50dB of gain and provides coverage throughout your car, truck, RV or boat. Ideal for remote locations GREATER than 10 km and up to 50 km from the nearest cellular tower



BMEUX450MSPC



BTEUX430MinUPA



BMEUX453M14PC



# RV & Trucker - X6 XTube PRO 55dB Extreme With Xtube Antenna



Multiple  
users / phones



Reduces  
Dropped Calls



Increases data transfer  
rates up to 30 times

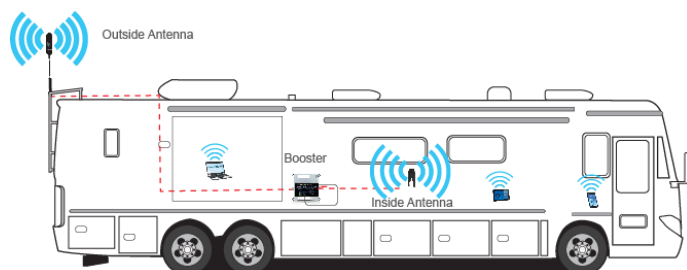
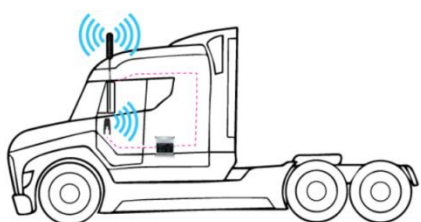
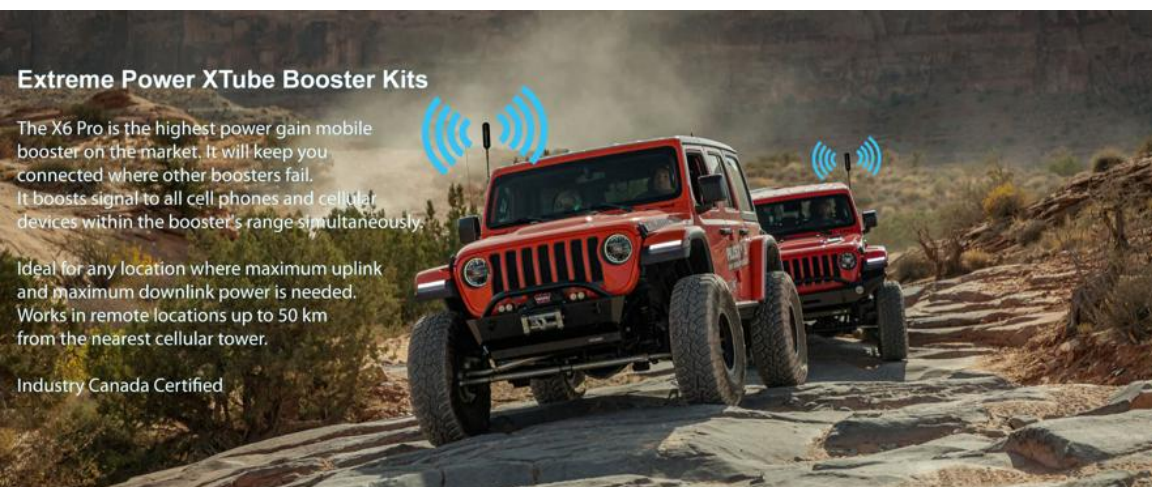


Connects you  
in Poor signal  
Areas



Easy Install  
Portable

The RV X6 PRO is the highest power and gain mobile booster available and features automatic oscillation control, and network overload protection to always maintain maximum efficiency. It has 55dB of gain and provides coverage throughout your RV. Ideal for remote locations up to 50 km from the nearest cellular tower



BMEUX455TRUXLPi20



BMEUX455TRVGLPCH30

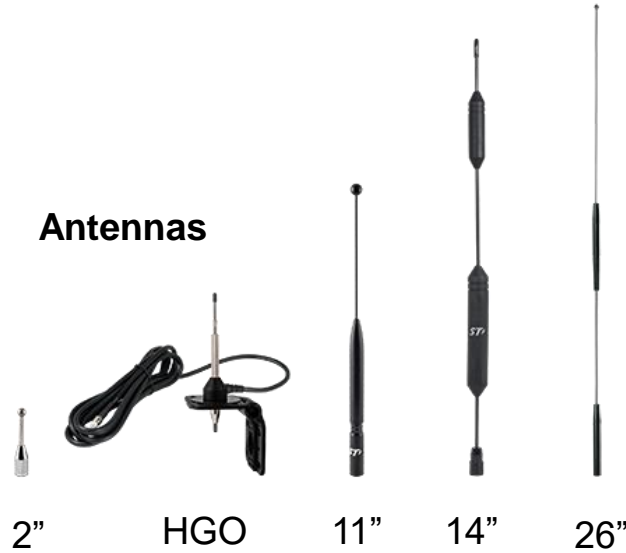


## Mobile Network Signal Booster Accessories



**Cradles**

**Antennas**



2"

HGO

11"

14"

26"

**Cables**



**Antenna Mounting Solutions**



Small Magnetic  
Base

Large Magnetic  
Base

Thru-Hole Mount



Glass Mount

Mirror Mount

**Power Supplies**



3.5A Install

3.5A Plug-in

3.5A Wall



Plot Live

Plot Project

Clear All

Clear Popups

Clear Lines

Tower Detailed Info (4431)

User Ant Ht(m): 1.5 Area Density: Urban

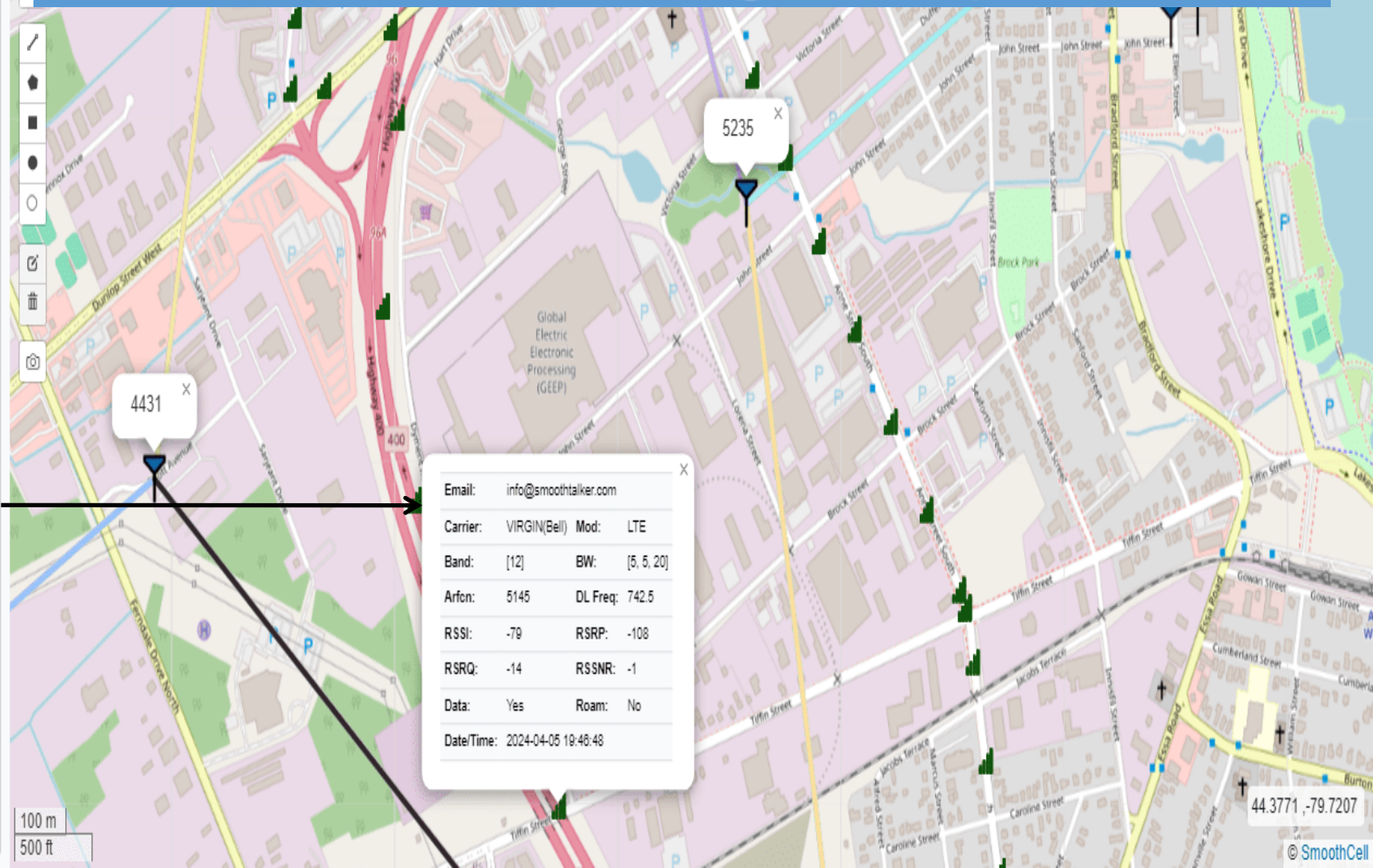
Latitude: 44.37471944 Longitude: -79.71721944

Ground Elev (m): 227 Carrier: Bell Canada

Distance(km): 0 Mobile-Twr AZIM: 0°

Band	Twr TX	Twr RX	RSSI	RSSI Act	BW	Twr Pwr	Twr Gnd	Twr Ant	AZIM	Rng
5	886.25	841.25	0	0	2.5	680.7	235	46.1	10	23.1
2	1982.5	1902.5	0	0	5	842.9	235	48.7	130	7.6
12&13	753.5	784.5	0	0	5	680.4	235	46.1	130	21.4
2	1962.5	1882.5	0	0	5	769.1	235	46.1	240	7.0
7	2665	2545	0	0	10	863.0	235	48.7	130	4.6
2	1952.5	1872.5	0	0	5	724.8	235	46.1	130	6.9
5	888.75	843.75	0	0	2.5	680.7	235	46.1	240	23.0
2	1952.5	1872.5	0	0	5	769.1	235	46.1	240	7.0
7	2695	2595	0	0	5	680.4	235	46.1	10	5.1
12&13	753.5	784.5	0	0	5	680.4	235	46.1	240	21.4
2	1962.5	1882.5	0	0	5	724.8	235	46.1	130	6.9
4	2150	1750	0	0	10	769.1	235	46.1	240	5.2
2	1982.5	1902.5	0	0	5	842.9	235	48.7	240	7.6
5	888.75	843.75	0	0	2.5	680.7	235	46.1	130	23.0
4	2137.5	1737.5	0	0	5	769.1	235	46.1	10	6.4
7	2675	2555	0	0	10	863.0	235	48.7	10	4.6
25	1992.5	1912.5	0	0	5	842.9	235	48.7	240	7.6
4	2142.5	1742.5	0	0	5	769.1	235	46.1	10	6.4

# Smoothcell Vehicle On The Road Signal Capture





## Marine – Mariner X6 50dB Marine Booster Solution



Improves  
device battery  
life



Reduces  
Dropped Calls



Increases data transfer  
rates up to 30 times



Connects you  
in Poor signal  
Areas



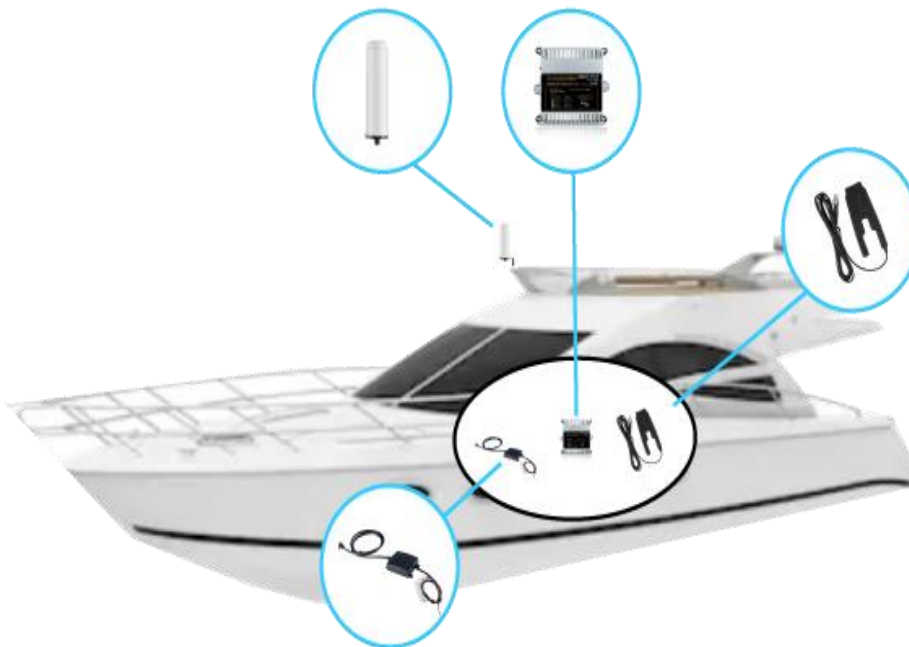
Easy Install  
Portable

The **Smoothtalker Marine boosters** are available for small, medium, and large vessels. The Smoothtalker Marine X6 Extreme Power Boosters are the most technologically advanced cellular signal booster made. It features proprietary "stealth tech technology" that prevents shutdowns from poor antenna placement and changing environment. The Smoothtalker Extreme Power Marine Booster kits can keep you connected up to 30km off shore from the nearest tower.



**B1MEUX453T1XPi**

Marine boosters are available in 23dB  
direct connect and wireless in 50dB & 65dB





# *Smoothtalker*

*Cellular Signal Boosters - Boosting Your Signal Anywhere*

**Mobile Communications Inc. – Smoothtalker.com**

230 Earl Stewart Dr.

Aurora, Ontario, Canada, L4G 6V8

Sales and Tech Support: **905-726-3444**

[kevin.c@smoothtalker.com](mailto:kevin.c@smoothtalker.com)

[www.smoothtalker.com](http://www.smoothtalker.com)



Automatic power  
control protects the  
Mobile Network

