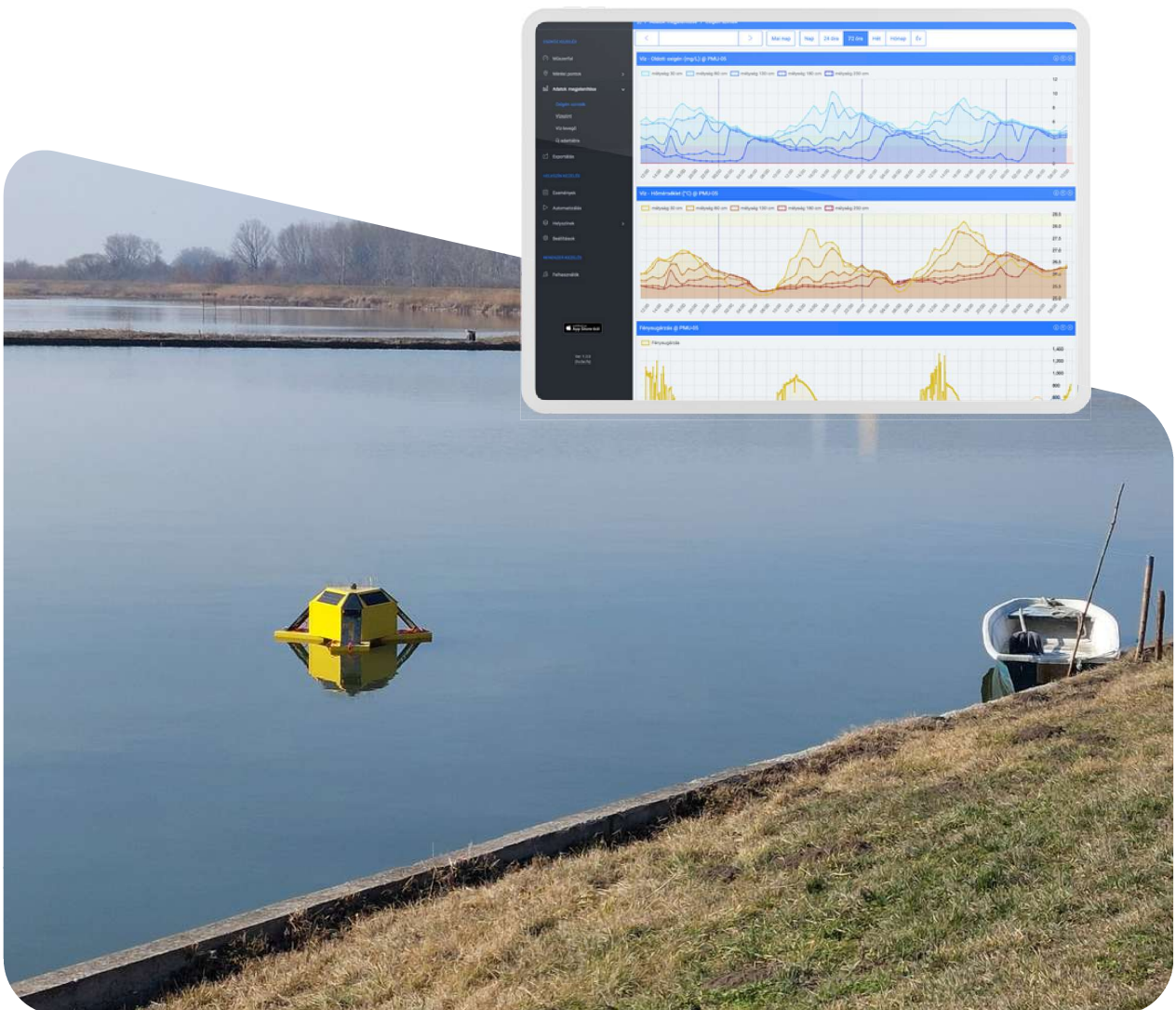




Monitor. Adapt. Overcome.

# AUTOMATED WATER MONITORING AND INTERVENTION

FOR SAFE WATER MANAGEMENT AND SUSTAINABLE AQUACULTURE





Monitor. Adapt. Overcome.

## WHY WALISE?

The key to sustainable fish farming lies in access to accurate, real-time water quality data.

With the WALISE automated monitoring system you can proactively identify water quality problems and take timely action to protect fish health.

- ✔ You can monitor water quality parameters from anywhere.
- ✔ In the event of a problem, the system sends an immediate alert, allowing for a swift and appropriate response.
- ✔ With the WALISE system, interventions can also be automated.



The WALISE monitoring system can be widely used for the supervision and management of aquatic environments:

- ✔ Fish-farms
- ✔ Extensive, semi-intensive, and intensive aquaculture systems
- ✔ Production and recreational fishing lakes
- ✔ Nature and environmental protection
- ✔ Wetlands

## WALISE BENEFITS

### ✔ PREVENTING FISH KILL – RISK REDUCTION

Thanks to real-time data and immediate alerts, sudden fish kills that cause significant financial loss can be avoided.

### ✔ BOOSTING ECOSYSTEM HEALTH AND SUSTAINABILITY

The WALISE system increases the sustainability of a fish pond's environmental parameters by 90%, improving the long-term health and stability of the pond's ecosystem.

### ✔ STRENGTHENING PRODUCTION SAFETY

You can increase production security by 30%, as it reduces the risk of fish mortality and ensures a stable environment.

### ✔ REDUCING ELECTRICITY CONSUMPTION

With real-time data, you can reduce energy consumption by 15-50% by precisely determining when to activate aerators and pumps.

### ✔ INCREASING YIELD

The system allows for a nearly 20% higher stocking density, as it helps maintain an ideal and safe environment for the fish.

### ✔ REDUCING WORKLOAD

Automated data collection and analysis significantly reduces your team's workload, resulting in a more efficient operation.

GET IN TOUCH!

 +36 70 885 6542

 [walise.com](http://walise.com)

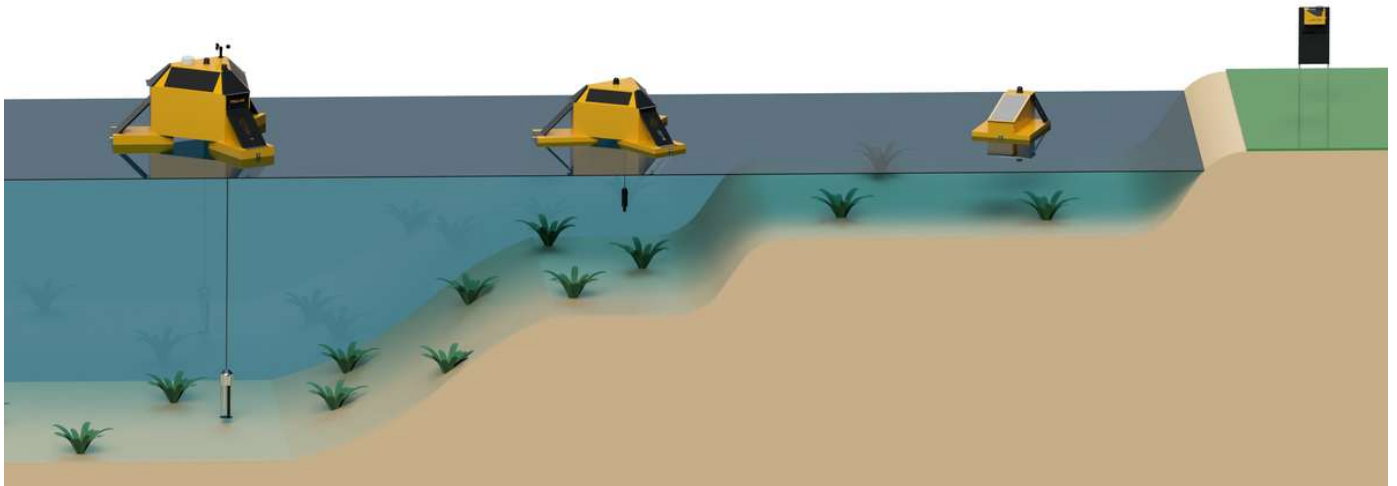
 [info@walise.com](mailto:info@walise.com)

 7400 Kaposvár, Raktár köz 6.



Monitor. Adapt. Overcome.

## WALISE MONITORING UNITS



### WATER & ENVIRONMENTAL MONITORING

By simultaneously measuring the conditions of water, air, and soil, comprehensive monitoring gives you a full view of the entire environment.



### PROFILING

With the WALISE system, each layer of the water column can be individually analyzed and monitored, clearly revealing any differences.



### AUTOMATIC INTERVENTIONS

The system can directly and automatically control aerators, air blowers, and pumps.



### Water monitoring



### Air monitoring



### Soil monitoring



### AUTONOMOUS DEVICES

The devices operate autonomously, requiring no supervision or human intervention.



### SOLAR ENERGY

The devices are powered by solar panels and are self-sufficient, requiring no on-site power supply.



### EASY TO USE

The devices are easy to use and require minimal maintenance, with no lengthy training needed.

GET IN TOUCH!



+36 70 885 6542



info@walise.com



walise.com



7400 Kaposvár, Raktár köz 6.



Monitor. Adapt. Overcome.

## WALISE ONLINE PLATFORM



### REAL-TIME DATA. REMOTELY. 24/7.

You can view your data remotely and in real time, 24/7, allowing you to react quickly without waiting for analysis.



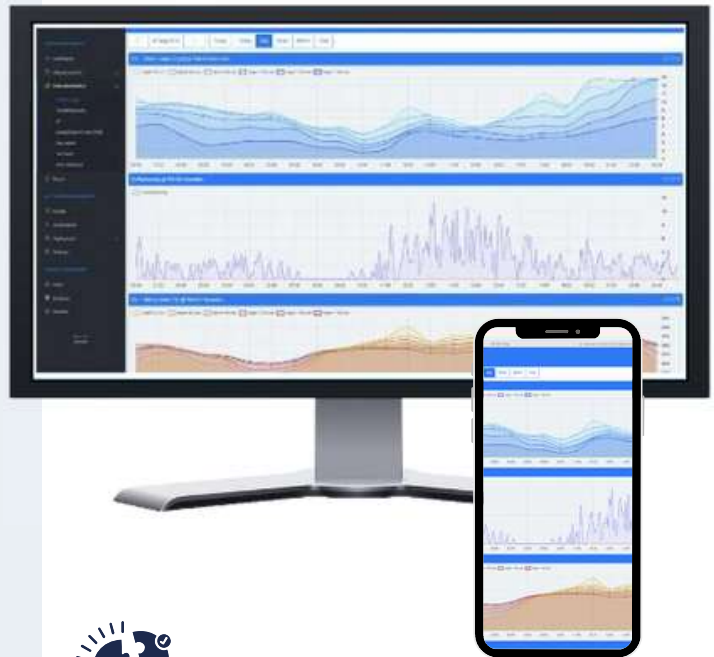
### REMOTE MONITORING

The WALISE online platform provides secure, remote access to your data, accessible from your phone or computer at any time.



### INSTANT ALERT

The system sends an alert if a value is outside of the acceptable range, with customizable thresholds.



### EXPERT CONSULTATION

Our experts in hydrobiology and fish biology provide support for data interpretation, complex assessments, and the development of actionable improvement plans.


## ABOUT

Our purpose at WALISE is to empower managers of aquatic environments with innovative solutions for continuous monitoring, helping them achieve their goals for sustainable water management.


Our team of software developers, electrical engineers, and aquatic experts is committed to safeguarding the health of our water environments and supporting water managers.

**Levente VÁRKONYI PhD**  
chief sales officer, fish biologist

 [info@walise.com](mailto:info@walise.com)

 +36 70 885 65 42

 [walise.com](http://walise.com)

 Raktár köz 6. Kaposvár  
7400 HUNGARY



**MONITORING UNIT  
FEATURES**



WALISE unit	PMU	SMU	CMU	FMU
water monitoring	✓	✓	✓	✓
air monitoring	✓	✓		✓
soil monitoring				✓
profiling	✓	✓		
automatic intervention with FMU communication	✓	✓	✓	✓
data analysis, data retrieval	✓	✓	✓	✓
measuring depth	0,1m - 20m	0,1m - 1,5m	fixed depth	fixed depth
sensors	3/unit	2/unit	1/unit	3/unit
weight	60-70kg	30-40kg	18-20kg	2-3kg
external power supply	not required	not required	not required	not required, except enclosed
sensor cleaning	2x/month	2x/month	2x/month	4x/month
deployment	mobile (anchored)	mobile (anchored)	mobile (anchored)	fix



Monitor. Adapt. Overcome.

# WALISE AUTOMATED MONITORING

## HEALTHIER FISH STOCK, FEWER LOSSES

Continuous water quality monitoring enables early detection of problems, significantly lowering the risk of fish mortality. This not only preserves ecological balance but also provides direct economic benefits by reducing restocking costs.

## SAFE AND SUSTAINABLE OPERATION

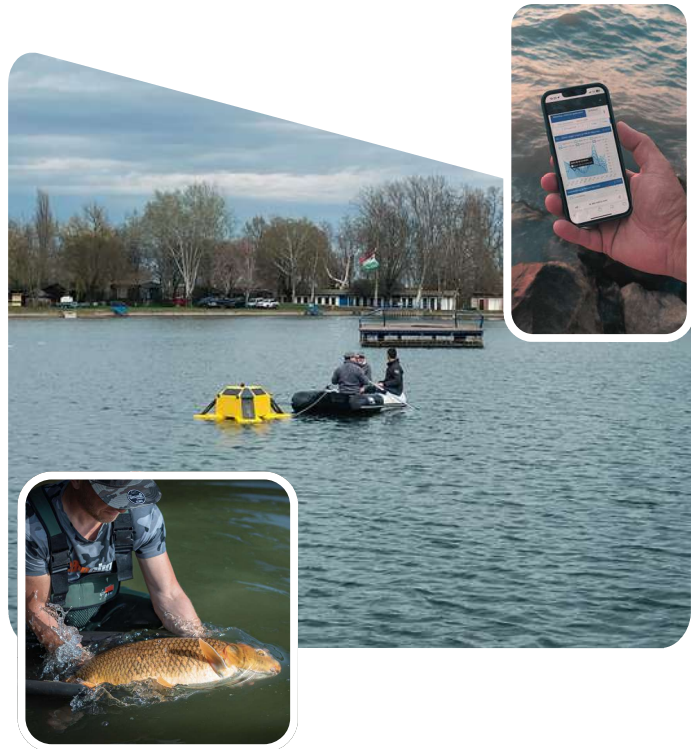
WALISE provides early warnings of water quality issues, allowing preventive action. This reduces risks and costs, while ensuring long-term sustainability of the lake.

## COMPETITIVE ADVANTAGE AND DIFFERENTIATION

Implementing an innovative, professional monitoring system makes the lake stand out in the market. Conscious water management is not only attractive to anglers but also strengthens the lake's market position over the long term.

## WALISE makes water management simpler, safer, and more effective.

Our system provides you with real-time data on water, air, and soil conditions, all accessible from your phone or computer. With automated monitoring and controls, you get instant visibility and the ability to manage your lake effectively.




## ABOUT

Our purpose at WALISE is to empower managers of aquatic environments with innovative solutions for continuous monitoring, helping them achieve their goals for sustainable water management.


Our team of software developers, electrical engineers, and aquatic experts is committed to safeguarding the health of our water environments and supporting water managers.

Levente VÁRKONYI PhD  
Chief Sales Officer, Fish Biologist

 [info@walise.com](mailto:info@walise.com)

 +36 70 885 65 42

 [walise.com](http://walise.com)

 Raktár köz 6. Kaposvár  
7400 HUNGARY