

# Utilize Palm Biometrics Technology To Privately And Securely Connect The World



## Key Highlights

- \$51 bn biometric technology market is ripe for disruption
- The only technology company whose palm vein algorithm is based on AI deep learning while also developing the world's smallest module
- Already deployed with metros in 4 cities including Shanghai and 100% successful pilot with Union Pay
- Partnered with Hong Kong Hospital Authority in biometric accessing management, deployed our solution in Queen Elizabeth hospital in 1st quarter 2025
- Strategic Partner to an SGX-listed Company in ASEAN
- Successfully launched Palm Print mobile solution for Humanity Protocol in July 2025, 500K users registered and verified
- First of the world portable palm vein verification device will be launched in 3rd quarter 2025

## Mature Experience And Strong Partnership

- Millions of dollars into R&D
- 100% success of completed pilots at scale
- We have pivoted our focus to scaled commercialization

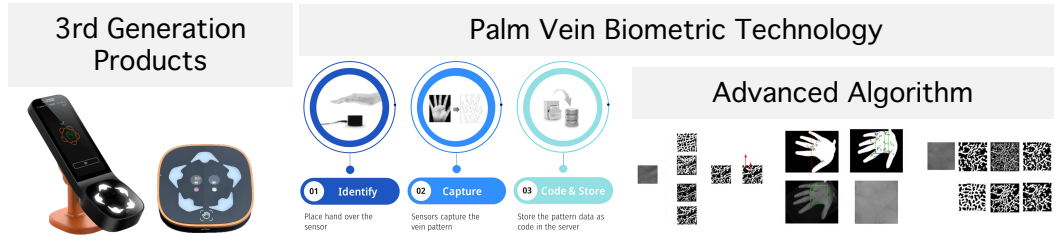
## Investment Thesis

- The technology leader in palm biometrics providing the most secure and private single-modal biometric recognition solution
- The team in early development of AI-powered deep learning algorithm resulting in improved wide-angle recognition, accuracy, and speed of identification process (since 2015)
- 1 of 2 companies globally with commercially scalable palm vein biometrics
- Significant technological moat and partnerships that allow for scalability at considerably lower cost to limited competition
- Straightforward business model of focusing on being a hardware provider for B2B or B2G minimizing burn and maximizing profitability

## Company Overview

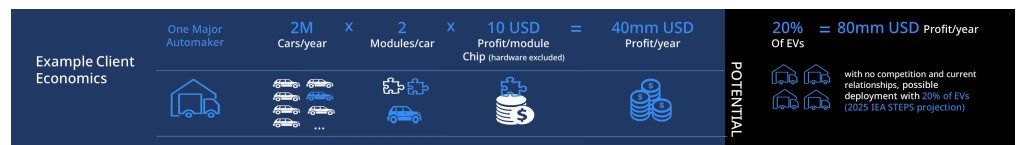
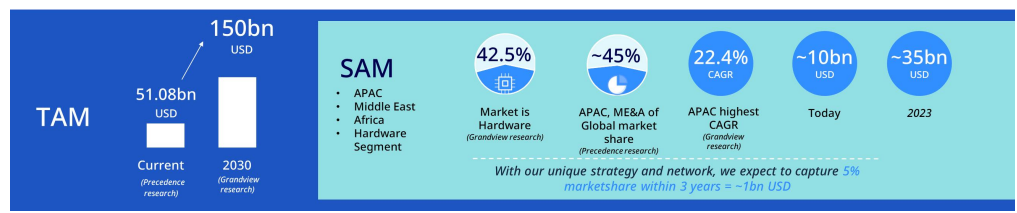
A biometrics technology company that develops palm print and palm vein biometrics solutions backed by a dynamic team of 25 strategically located across Singapore, Shanghai, Shenzhen, and Hong Kong.

## The Solution (Palm Vein)



- Gen 3 : All-around upgrades to Gen 2 also suitable for any setting but particularly robust for high traffic flow scenarios due to better sensitivities, wider angle recognition, and greater recognition range
- Fusion with palm print and palm vein: our new algorithm combines palm print and palm vein features, enabling identification system scalability for up to 10 million individuals.

## Market Opportunities



POTENTIAL  
with no competition and current relationships, possible deployment with 20% of EVs (2025 IEA/IEA's projection)

# Utilize Palm Biometrics Technology To Privately And Securely Connect The World



## High Margin, Low-Cost Business Model

- Avoid B2C and embrace B2B by leveraging proprietary relationships and technological moat to minimize burn and maximize profitability
- Cash cow is providing OEM hardware to our B and G clients, integrated with chips housing our proprietary AI-driven algorithms and client-customized software for immediate cash flow positive
- Focus on government or national-level projects that enable the adoption of palm vein biometrics on a broad and deep level to unlock ecosystems palm vein biometrics that is uniquely positioned to connect

## YTD (30th July 2025) Company Financial Performance

- revenue: USD915K
- total cost (include R&D): USD610K
- Operating Profit margin%: 33.3%

## Proven Success And Benefits To Palm Vein Technology Users

Our palm biometric solutions have been applied in different fields:

- Partnered with Shanghai Metro in transportation: 1<sup>st</sup> in the world to deploy contactless palm vein recognition system with 0.3s fast response
- Partnered with Union Pay for payments: Co-developed intelligent terminals and promoted "Palm Pay" with 100% client and user satisfaction and 0.0000001 false rate
- Partnered with Humanity Protocol in global digital human ID: launched palm print mobile solution for enrollment (500K users in July 2025) and will deploy palm vein device in 3rd quarter 2025

### Competitive Advantages Of Palm Vein Biometric Technology

- Unique (even amongst twins)**  
More identifying points than all other biometrics
- Non-replicable**  
Cannot be deep faked
- High Precision**  
Lowest error rate
- Intrinsic Live Recognition**  
No need for live test
- Insusceptible to External Factors**  
Such as wrinkles, debris, scars
- Non-intrusive & Private**  
No need to store an image of your face or palm
- Contactless & Hygienic**
- 0.1s Super Fast Identification**
- Compact & Mobile**
- Easy to Deploy**
- Intuitive**

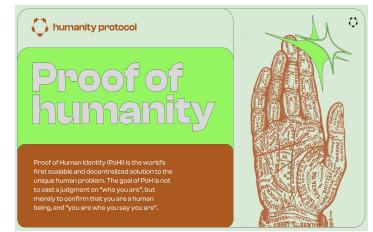
### Shanghai Metro Pilots



### Union Pay Pilots



### Humanity Protocol



## Financial Prospects And Future Roadmap

- With our unique strategy and network, we expect to capture 5% market share of the SAM for the hardware segment of biometrics in the Asia-Pacific, GCC, and Africa regions, representing \$1bn USD in revenue

