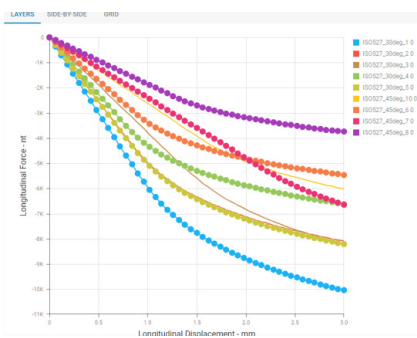
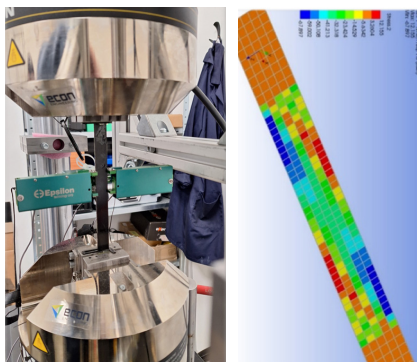


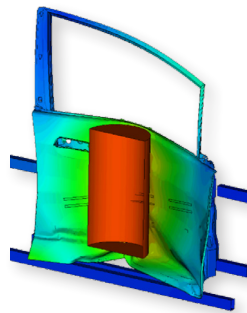
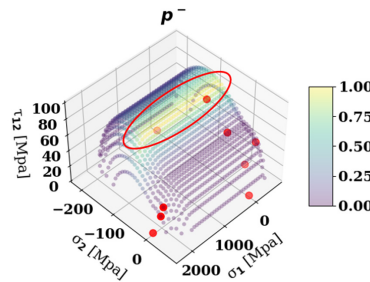
INTELLIGENT MATERIAL CHARACTERIZATION AND MANAGEMENT SYSTEM (FEMZILLA) FOR FIBER-REINFORCED POLYMERS AND ELASTOMERS



WITHIN THE SCOPE OF RUNNING PROJECT DIMOP PLUSZ-1.1.2/B-24-2025-00022

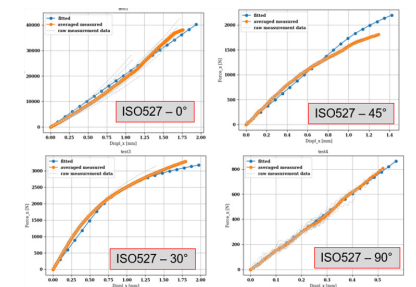
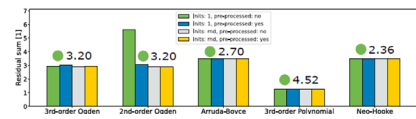


- Ever-growing material database
- Datasheets
- Constituent properties
- Raw measurement data
- Material curves
- Standard or unique experiments
- Reporting facility



- High-precision constitutive material models
- For standard property derivation
- For FEM simulation
- Analytical and numerical fitting
- Nonlinearity handled, failure included
- Data-driven solutions (ML based parameter initialization and model selection)
- Automated simulation datacard and reporting
- Automated UQ handling

Material	Timestamp	Name	Material	Status
Add New				
List				
Measurement	4/19/2024, 11:07 PM	NAFEMS ECC024 - north	Demo CPEP UD	Finished
Add New	4/19/2024, 11:37 AM	NAFEMS ECC024 - north	Demo CPEP UD	Interrupted
List	4/19/2024, 8:53 PM	NAFEMS ECC024 - north	Demo CPEP UD	Error
Project	4/18/2024, 6:27 PM	NAFEMS ECC 024 - In2	Demo CPEP UD	Interrupted
	4/18/2024, 9:51 AM	NAFEMS ECC024 - In	Demo CPEP UD	Interrupted



- Web-based application
- Possibility to install on local network
- Public database for free
- Possibility for encrypted storage
- Automated FEM constitutive and failure model fitting facility as Freemium or licenced service
- For ANSYS / LS-DYNA solver