



**ClinWin** Research Services

Efficiency. **Quality**. Ethics

---

## COMPANY PROFILE

### **Registered Address**

ClinWin Research Services  
Landmark Plaza, 13th Floor Argwings Kodhek Road  
P O. Box 856 00606, Nairobi Kenya  
Tel. Mobile +254 (0)721 515 009/0790089440  
Office +254 20 3673526/0703041526 /0730173526  
Email: [info@clinwinresearch.com](mailto:info@clinwinresearch.com) or [nkisengese@clinwinresearch.com](mailto:nkisengese@clinwinresearch.com)  
Website: [www.clinwinresearch.com](http://www.clinwinresearch.com)

---

## ABOUT CLINWIN RESEARCH SERVICES

ClinWin, is a mid-sized research organization, based in Nairobi, Kenya, with regional offices in Kampala, Uganda, and Kigali, Rwanda. We offer a wide range of consulting services and solutions to Biopharmaceutical companies, Academic Medical Centres, not-for-profit organizations, United Nations agencies, and Government funded entities, offering innovative solutions to accelerate development programs and technological interventions in the developing world.

ClinWin has managed client projects in various parts of Africa and some parts of Asia. We are experienced in managing multicentre, multi-country projects including health outcome studies. ClinWin also has work experience in Low- and Middle-Income Countries (LMIC), managing research projects in emergency and resource-limited settings in Africa.

### Our Mission:

To partner with our clients to support the successful outcome of their projects.

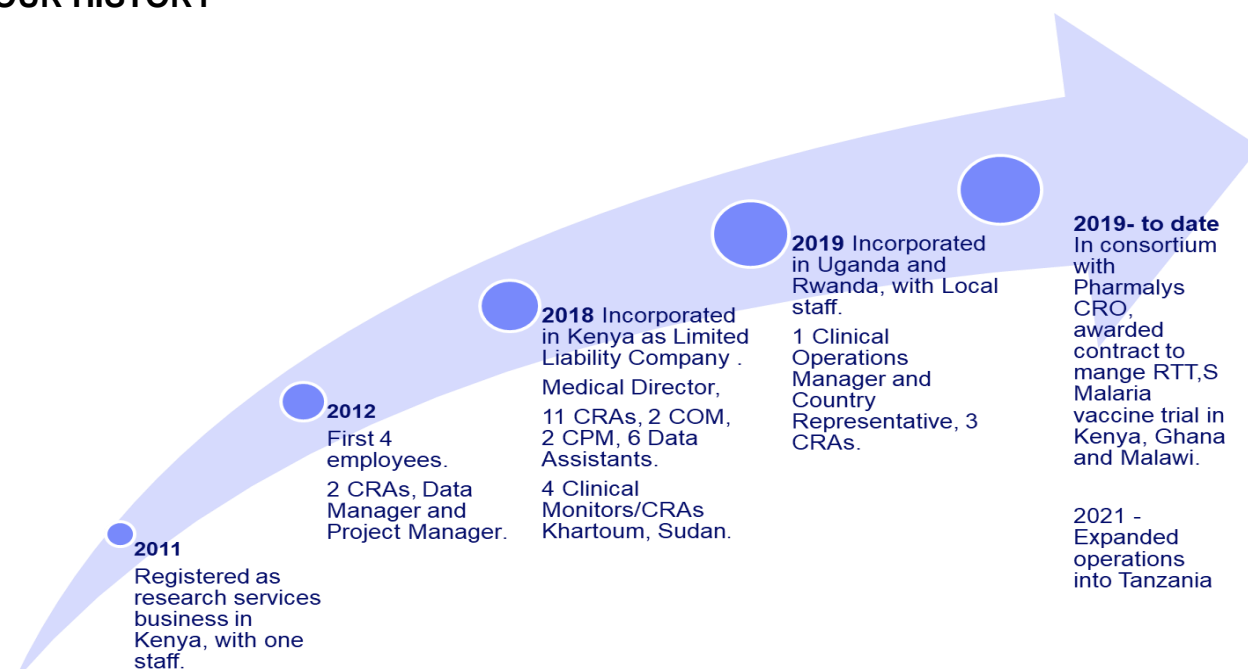
### Our Values:

To advance our clients assigned projects through integrity, teamwork, quality, and accountability

### Our principles:

Efficiency, Quality, Ethics

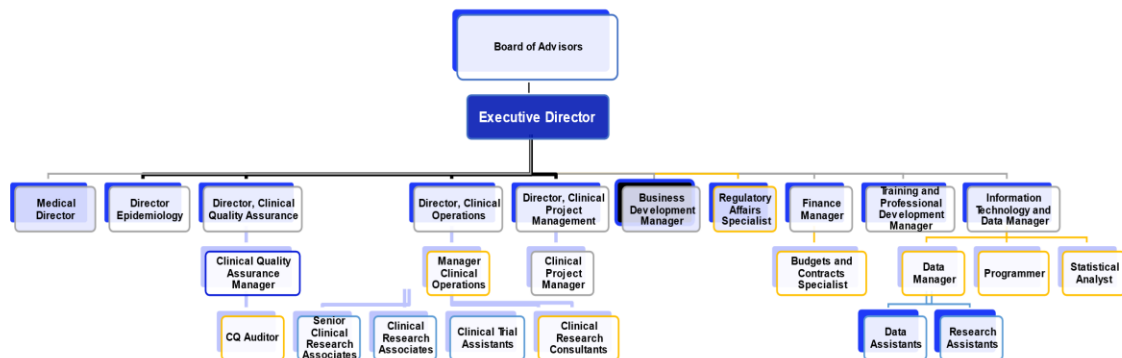
## OUR HISTORY



## OUR SERVICES



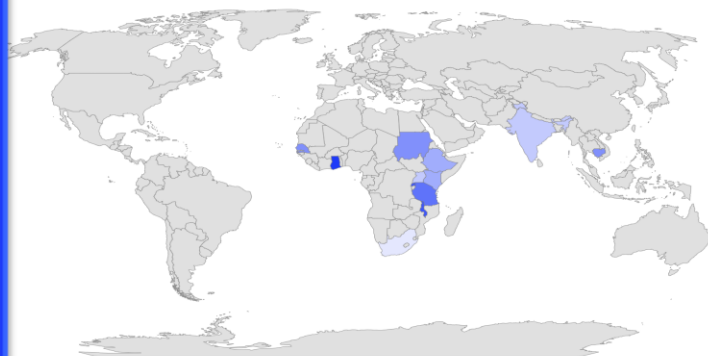
# ClinWin Organogram



© 2019 ClinWin Research

## OUR GEOGRAPHICAL EXPERIENCE

Kenya  
Uganda  
Tanzania  
Rwanda  
Malawi  
South Africa  
Mozambique  
Senegal  
Ghana  
Ethiopia  
Sudan  
Zambia  
Zimbabwe  
Nigeria  
India  
Cambodia



© GeoNames, HERE, MSFT, Microsoft, NavInfo, Thinkware Contract, TomTom, Wikipedia © 2019 ClinWin Research

## OUR CORE SERVICE AREAS

The major focus is providing specialized services to government, non-government, and corporate clients in these core service areas:

- ✚ Strategic Consultancy Services
- ✚ Research and Training
- ✚ Data Science
- ✚ Health Systems and Outcomes Research
- ✚ Contractual Services Management
- ✚ Capacity Building on existing and new innovations.

## Our Team

The ClinWin team is comprised of trained and experienced Management Consultants, Monitoring and Evaluation specialists, Project Managers, Research Associates, Research Assistants, Capacity Building Experts, Data Scientists and Research Consultants. The team is led and managed by the Chief Executive Officer/Director of Operations assisted by respective Subject Matter Experts and services areas Team Leaders.

The team expertise is drawn from various entities including Government, Research, academic, not for profit development partnerships and Contract Research Organizations (CRO) settings. For each project, ClinWin assigns a Lead Consultant/Project Manager to provide overall management. The Lead Consultants harnesses from expertise from other departments within the firm.

## **Our Experience**

With years of dedicated experience in strategic consulting, ClinWin has successfully partnered with numerous organizations to enhance their operational efficiency and governance structures. Our team comprises experts with diverse backgrounds in finance, legal, management, and training, all committed to fostering the growth and sustainability of start-up organizations. We have a proven track record of implementing effective corporate governance and risk management frameworks, conducting comprehensive market surveys, and providing targeted capacity-building programs. Our in-depth knowledge and hands-on approach ensure that we deliver tailored solutions that address the opportunities, needs, and specific challenges faced by our clients within given timeframes.

## **Project Management**

Our project management team performs the following tasks for the clients' assigned projects:

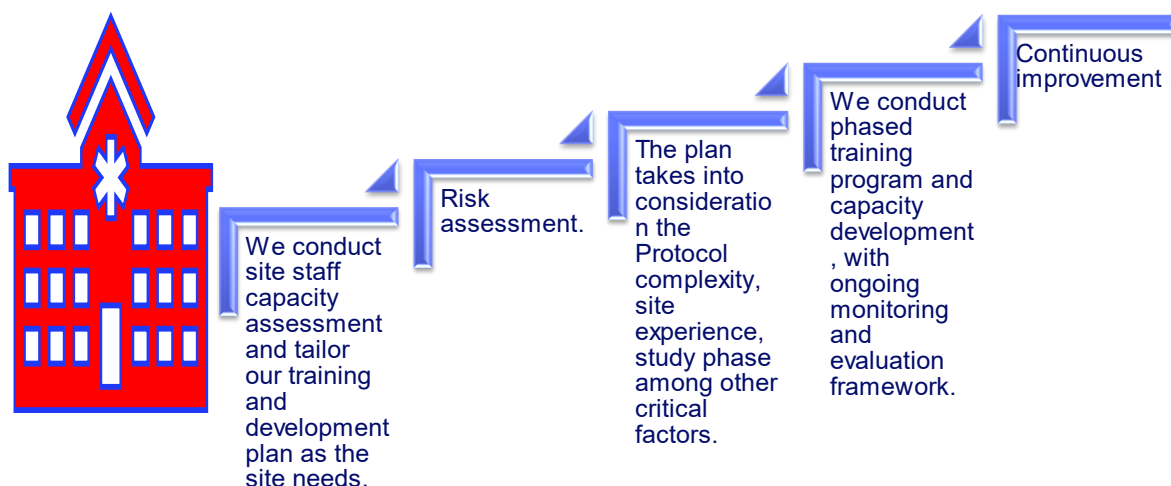
- Projects feasibilities and start-ups.
- Risk assessment and Management
- Regulatory and ethical compliance
- Project team management
- Resources planning and management
- Milestones tracking and reporting
- Budgets and Contracts negotiations and management
- Project Communications
- Quality management
- Projects Monitoring and Evaluation

## **Human Resources management and capacity building.**

ClinWin research services understands the importance of human resource management and capacity building in fostering organizational growth and sustainability. These services focus on optimizing workforce performance by implementing strategic HR practices, such as talent acquisition, employee engagement, and performance management.

Capacity building enhances the skills, knowledge, and competencies of individuals and teams, to ensure they are equipped to meet evolving organizational challenges. Together, these services promote a productive work environment, align employee goals with organizational objectives, and empower teams to drive innovation and achieve long-term success. By investing in people, organizations can unlock their full potential and maintain a competitive edge in dynamic markets.

## Capacity Development process



© 2019 ClinWin Research

### Training

We pride ourselves on our robust training experience that empowers client's staff and members with essential knowledge and skills. Our training programs are meticulously designed to cater to the specific needs of clients, covering a wide range of topics such as financial management, customer service, marketing, and operational efficiency. We employ a variety of training methodologies, including workshops, seminars, and e-learning platforms, to ensure an engaging and effective learning experience. Our trainers are industry experts with hands-on experience, ensuring that participants gain practical insights and actionable strategies. This commitment to high-quality training helps our clients to enhance their performance and achieve their strategic objectives.

### Technological Experience

Our expertise includes the implementation of advanced software for data management, financial reporting, and member tracking. We utilize digital platforms for training and capacity building, ensuring accessible and interactive learning experiences for clients' staff and stakeholders. Our team is proficient in using technology to conduct detailed market and baseline surveys, providing accurate and actionable insights. By embracing the latest technological advancements, we ensure that our clients stay ahead in an increasingly digital world, enabling them to operate more effectively and sustainably. We are privy to the data privacy and protection laws and requirements. This ensures that we support our clients to

establish systems that are compliant to the legal and ethical requirements on handling customers' data.

## Data Science

We offer niche and general data management services as per client's needs. Our team of experienced and certified Data Scientists follow the Standard Data Management Practices and applicable regulatory and ethical requirements to deliver our clients assigned projects. We offer the following data science services:

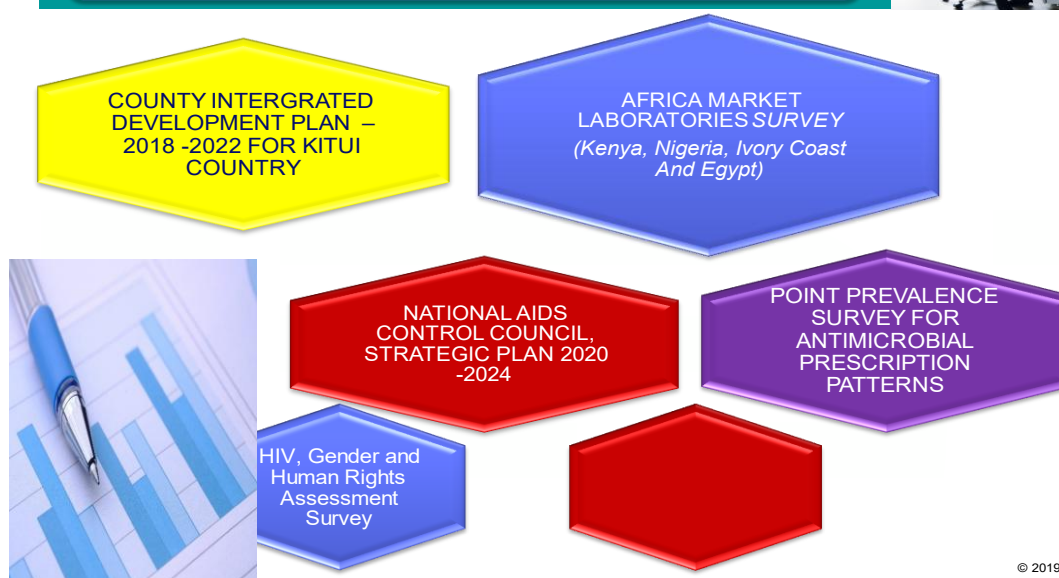
- Database development
- Programming and Validation
- Data capture and processing
- Data Monitoring and Quality Control
- Statistical analysis.

## Strategic Consulting Experience

We partner with our clients to provide strategic advisory services and or as extension of the client internal resources. We recently completed projects listed below.

## STRATEGIC MANAGEMENT CONSULTING

### Case Studies



© 2019 ClinWin Research



## COMPLIANCE AND CLIENTS' REFERENCES

### COUNTY GOVERNMENT OF KITUI

TEL: 044-4422041, 4422304  
Email: [finance@kitui.go.ke](mailto:finance@kitui.go.ke)



P.O. BOX 33 – 90200  
KITUI

### COUNTY TREASURY

When replying please quote  
Ref No. CGoK/FEP/4/6/10/IV/19

26<sup>TH</sup> JUNE 2018

The Information Professionals Africa Limited  
suite 0.7, Internet Business Centre, 22 Plums  
lane, Ojjo Road, Parklands  
west lands Sub County  
P.O Box 6365, 00200  
**Nairobi - Kenya**

ClinWin Research Services  
Lenwood Apartments, B6  
Lenana Road, Kilimani  
P.O Box 3289 – 00200  
**Nairobi - Kenya**

#### **RE: RECOMMENDATION FOR CONSULTANCY SERVICES ON THE PREPARATION OF KITUI COUNTY INTEGRATED DEVELOPMENT PLAN (CIDP) 2018-2022**

The above subject refers.

The County Government of Kitui through the County Treasury entered in to a contractual arrangement with a consortium of companies (*Information Professional Africa Limited and the ClinWin Research Services*) to prepare the Second-Generation County Integrated Development Plan (CIDP) 2018-2022. CIDP is a medium term economic blue print for the county to be implemented through one-year development plans; the Annual Development Plans (ADPs).

The assignment was executed within the agreed period and a lot of professionalism, cooperation and commitment was witnessed along the way. All this resulted in a document that captured the aspirations of Kitui people and characterized by smooth flow of information, high degree of readability and presentability. The document will eventually facilitate balanced and sustainable development in Kitui County.

It is from this background that, on behalf of the County Government of Kitui, recommend the consortium for the exemplary work they did to Kitui County.

Best regards.



**Justus Kalii**  
**Chief Officer, Economic Planning**  
**County Treasury**



13<sup>th</sup> August 2024

To Whom it May Concern

**Re: ClinWin Research Services**

---

We have contracted ClinWin Research Services from 5<sup>th</sup> April 2024 to the 9<sup>th</sup> August 2024 to monitor the field evaluation of a schistosomiasis rapid diagnostic test prototype conducted at 3 different sites in Kenya.

ClinWin performed activities related to ensuring the study protocol and related standard operating procedures were followed as per Good Clinical Practice guidelines, declaration of Helsinki and local regulatory and ethical requirements.

These activities included:

- Support of Site Initiation Visits and writing of SIV reports
- Daily site monitoring as per Monitoring Plan
- Review of sample collection, processing and storage procedures
- Review of test results and reporting
- Source data review and verification
- Support OpenClinica data queries clarification
- Completion of daily monitoring sheets for reporting to FIND
- Support in set-up and maintenance, as well as review of the Investigator Site File

The ClinWin team were a great asset to the project team. Their expertise, flexibility, diligence and hardworking nature contributed to the success of the project within a tight timeline. We definitely recommend them for the abovementioned services.

Yours sincerely,



Rossella Baldan  
Clinical Trial Manager, FIND



Sarah Hingel  
Principal Scientist, FIND

FIND  
Global Health Campus  
Chemin du Pommier 40  
1218 Geneva  
Switzerland  
T: +41 (0)22 710 27 88

[www.finddx.org](http://www.finddx.org)



16<sup>th</sup> August 2024

**TO WHOM IT MAY CONCERN**

Dear Sir/Madam

This letter confirms that our organization engaged ClinWin Research Services between 2023 and 2024 to provide monitoring services for a study conducted in neonate population at one site in Kenya. This study aimed at obtaining pharmacokinetic data and confirming neonatal dosing for a new antibiotic combination.

ClinWin's role encompassed conducting on-site monitoring visits to ensure data quality and integrity throughout the study. Their commitment to understanding our project objectives and adherence to timelines was exemplary. In addition, ClinWin demonstrated flexibility and capability in navigating through a complex study management structure. The collaborative nature of our partnership contributed significantly to the study's success.

Based on our positive experience, we wholeheartedly recommend ClinWin Research Services for their monitoring expertise.



**Christophe Escot – Clinical Operation Leader / GARDP**



5<sup>th</sup> September 2023

**TO WHO IT MAY CONCERN**

Dear Sir/Madam,

**REFERENCE: CLINWIN RESEARCH SERVICES**

This is to confirm that we engaged ClinWin Research Services between year 2020 -2022 to provide study management and monitoring services for the following projects:

1. The Global Point Prevalence Survey among private and public health facilities in Kenya to provide quantifiable measures to assess and compare quantity and quality of antimicrobial prescribing and resistance in hospitalized adults, children and neonates, as part of ongoing worldwide survey.
2. Market research project on the use of microbiology products across clinical laboratories in Kenya, Cote d'Ivoire, Nigeria and Egypt using a structured questionnaire.

ClinWin provided the following services:

1. Obtaining Protocol ethical approval as well as hospitals and County department of health approvals.
2. Data collection, entry and cleaning.
3. Biostatistical analysis and reporting.

ClinWin was open and collaborative in understanding our needs and ensured deadlines were met. I would definitely work with them again and therefore strongly recommend them for future opportunities.

Please do not hesitate to contact me if you do need further information.

Thank you.

Best regards,



**Dr. Kiplangat Sigei**

Medical Affairs Manager, Anglophone Africa

[kiplangat.sigei@biomerieux.com](mailto:kiplangat.sigei@biomerieux.com) | [www.biomerieux.com](http://www.biomerieux.com)





## To Whom it May Concern

Nairobi, October 24, 2019

### **Re: ClinWin Research Services**

We have contracted ClinWin Research Services to monitor and manage some of our clinical trials. These include a Phase II and III clinical studies on Visceral Leishmaniasis, Post Dermal Kalazar Leishmaniasis and Mycetoma in Sudan, Kenya and Uganda; and antimicrobial resistance drug trial in Kenya.

ClinWin performs activities related to study conduct and evaluation in accordance with DNDi Standard Operating Procedures, Good Clinical Practice guidelines, declaration of Helsinki and local regulatory and ethical requirements.

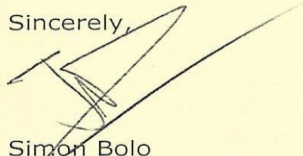
These activities include:

- Sites monitoring and management
- Source data verification
- Laboratory review of samples storage, tests results and reporting
- Data queries clarification and case report forms review
- Training of CRAs

The ClinWin is team player, cooperative, hardworking, diligent and are well equipped with requisite knowledge and experience to manage clinical research and health systems evaluation programs.

We highly recommend them for similar services. Should you require any further information, kindly do not hesitate to contact the undersigned.

Sincerely,



Simon Bolo  
**Regional Operations Leader**  
**DNDi Africa Regional Office**

AFRICA REGIONAL OFFICE

HEADQUARTERS

Tetezi Towers, 3rd Floor, George Padmore Road, Kilimanjaro  
P. O. Box 21936 - 00505 Nairobi, Kenya  
Tel: +254 020 399 50 00  
Email: infoafrica@dndi.org | Website: www.dndi.org

15 Chemin Louis-Dunant 1202 Geneva Switzerland  
Tel: + 41 (0) 22 906 9230 Fax: +41 (0) 22 906 9231  
Email: dndi@dndi.org

DNDi Africa is ISO 9001:2008 certified



**International Centre of Insect Physiology and Ecology**

P. O. Box 30772-00100 Nairobi, Kenya  
Tel: +254 20 8632000; Fax: +254 20 8632001  
icipe@icipe.org — www.icipe.org

**4<sup>th</sup> June 2018**

TO WHOM IT MAY CONCERN

**RE: CLINWIN RESEARCH SERVICES**


This is to confirm that CLINWIN Research Services, a Contract Research Organization was engaged between July 2017- June 2018, to provide clinical trial monitoring services and site management on behalf of the International Centre of Insect Physiology and Ecology (ICIPE) sponsored clinical trial. This was a Phase IIa tungiasis clinical trial (testing a novel neem-based topical oil for treatment) conducted in Kilifi county in collaboration with the community-based organization Dabaso Tujengane, Watamu.

CLINWIN performed site initiation, interim clinical trial monitoring and close out visits, and other operational activities related to study management. These activities were conducted as per ICIPE Standard Operating Procedures, Good Clinical Practice guidelines, declaration of Helsinki and applicable regulatory requirements.

It was a pleasure to work with the team which we experienced as cooperative, hardworking and diligent and well acquitted with requisite knowledge and experience to manage clinical research projects.

Do not hesitate to contact me if you do need further information.

Yours sincerely



**Dr Ulrike Fillinger**  
Interim Head, Human Health Theme  
Office: +254 57 205 3331  
Email: [ufillinger@icipe.org](mailto:ufillinger@icipe.org)



THE JENNER INSTITUTE

Old Road Campus Research Building  
Roosevelt Drive, Oxford OX3 7DQ  
Tel: +44 (0)1865 617630 Fax: +44 (0)1865 617608  
Email: [tomas.hanke@ndm.ox.ac.uk](mailto:tomas.hanke@ndm.ox.ac.uk)  
Website: [www.jenner.ac.uk](http://www.jenner.ac.uk)  
Professor Tomáš Hanke  
Head of The HIV-1 Vaccine Programme



February 20, 2018

To Whom It May Concern

**RE: CLINWIN RESEARCH SERVICES**

— This is to confirm that CLINWIN Research Services, a Contract Research Organization was engaged between 2013-2015 to provide clinical trial monitoring services and site management on behalf of the University of Oxford-sponsored clinical trial. This was a phase I/IIa clinical trial testing candidate HIV-1 vaccines conducted at KAVI-Institute of Clinical Research, University of Nairobi, Kenya.

CLINWIN performed Site Initiation, interim clinical trial monitoring and close-out visits, and other operational activities related to study management. These activities were conducted as per University of Oxford Standard Operating Procedures, Good Clinical Practice guidelines, declaration of Helsinki and applicable regulatory requirements.

The team was pleasant to work with, cooperative, hardworking, diligent and are well acquitted with requisite knowledge and experience to manage clinical research projects.

Do not hesitate to contact me if you do need further information.

Yours sincerely,



THE JENNER INSTITUTE - DEVELOPING INNOVATIVE VACCINES  
A Partnership between Oxford University and the Pirbright Institute

## MEMORANDUM OF UNDERSTANDING

BETWEEN

**CLINWIN RESEARCH SERVICES**  
**P O BOX 3289, NAIROBI 00200, KENYA**

AND

**UNIVERSITY OF NAIROBI**  
**PO BOX 30197-00100**  
**NAIROBI**

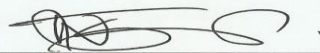
IN WITNESS WHEREOF, the Parties hereto have executed this  
Memorandum of Understanding this 5<sup>th</sup> Day of  
September 2017

**SIGNED** for and on behalf of the **UNIVERSITY OF NAIROBI:**



**Professor Peter M. F. Mbithi**  
**THE VICE-CHANCELLOR**  
**UNIVERSITY OF NAIROBI**

**SIGNED** for and on behalf of the **ClinWin Research Services, Kenya:**



**Mr. Nick Kisengese**  
**DIRECTOR**  
**CLINWIN RESEARCH SERVICES, KENYA**



## Abstracts

**Background** Africa carries the largest burden of the poverty-related diseases in the world. Most of her populations live in resource-limited settings. These act as catalysts for poverty-related diseases in those populations. There is urgent need for affordable, safe and effective health technologies to reduce the economic burden of those diseases. Clinical research provides an opportunity for access to new and improved health technologies, which have undergone evaluation in clinical trial settings, in compliance with Good Clinical Practice (GCP) and local regulatory requirements. The local Contract Research Organisations offer cost-effective solutions, human resource capacity and experience in poverty-related diseases research, regulatory affairs, culture and politics.

**Methods** ClinWin provides clinical development services for poverty-related diseases. It has partnered with industry, not-for-profits and academic sponsors to provide a suite of trial and site management, and sponsor oversight services to local clinical research programs. These services include: training, trial monitoring, quality assurance, ethical and regulatory expertise; contract negotiation and trial coordination among others. Leveraging its indigenous knowledge of the clinical trial landscape in the region, it has developed a database of potential and current local investigators capable of conducting registration trials. The lessons learnt in each project are documented and shared with investigator staff at new sites.

**Results** We conducted 23 monitoring visits at an academic site for a phase Ib HIV vaccine study and malaria phase IV drug trial monitoring visits in Kenya and Tanzania. Academic epidemiological tuberculosis studies were also conducted and we developed partnerships with professional development programs in industry and academia.

**Conclusions** Africa is the next frontier for clinical research enterprise, and the need for developing local human resource capacity is critical. This will make the region attractive for industry sponsored trials for poverty-related diseases and other indications.

PA-109 **THE ROLE OF LOCAL CONTRACT RESEARCH ORGANISATIONS IN BUILDING GCP-COMPLIANT CLINICAL RESEARCH IN POVERTY-RELATED DISEASES IN AFRICA: A CASE OF CLINWIN RESEARCH SERVICES**

Peter Onyango. *ClinWin Research Services, Kenya*

10.1136/bmjgh-2016-000260.139

A52

BMJ Glob Health 2017;2(Suppl 2):A1-A67



No. **PVT-DLUPKZJP**

## **CERTIFICATE OF INCORPORATION**

I hereby **CERTIFY** that,

### **CLINWIN RESEARCH SERVICES LIMITED**

is on this date 9 Dec 2024 Incorporated under the Companies Act, 2015 and that the Company is a **PRIVATE LIMITED COMPANY**.



.....  
**Registrar Of Companies**

This is a system generated certificate. To validate this document send the word **BRS** to **21546**

Form BN/3  
(100719)

(r,5)

REPUBLIC OF KENYA



THE REGISTRATION OF BUSINESS NAMES ACT  
(Cap. 499, Section 14)

### CERTIFICATE OF REGISTRATION

I hereby CERTIFY that NICODEMUS KISENGESE carrying on business under the business name of

**CLINWIN RESEARCH SERVICES**

at LR NO 1/886 LENANA ROAD , P.O. BOX 3289 00200 NAIROBI have/has been duly registered under Number BN/2011/19644 pursuant to and in accordance with the provisions of the Registration of Business Names Act and Rule made thereunder.

Given under my hand at NAIROBI on 29TH APRIL 2011

  
Assistant Registrar



CESS-A9CJGR2

REGISTRAR OF COMPANIES

THE PROPRIETOR(S)  
CLINWIN RESEARCH SERVICES  
P.O. BOX 3289 , 00200 - CITY SQUARE

Dear Sir/Madam

REF: CESSATION OF BUSINESS NAME CLINWIN RESEARCH SERVICES

We confirm receipt of your application form BN/6 notice of cessation of business dated 11 Oct 2024 07:42 am and notice filed 11 Oct 2024 07:42 am

As per your request we confirm having ceased the business with effect from 11 Oct 2024 07:42 am

Kindly be advised accordingly.

Yours Faithfully,



For Registrar of Companies

REGISTRAR OF COMPANIES  
SHERIA HOUSE,  
P.O. BOX 30031,  
NAIROBI  
11 OCT 2024 07:42 AM



## NAIROBI CITY COUNTY

City Hall Building,  
City Hall Way,  
Nairobi, Kenya

P.O. Box 30075-00100  
Nairobi, Kenya  
info@nairobi.go.ke

### UNIFIED BUSINESS PERMIT

TRADE LICENCE

LICENSE NO.: **UBP159714**

EFFECTIVE DATE: **21 JAN, 2025**

VALIDITY:

EXPIRY DATE: **24 MAR, 2026**

Nairobi City County grants this Trade License to

BUSINESS NAME: **CLINWIN RESEARCH SERVICES - CLINWIN RESEARCH SERVICES**

Registration details:

Physical address:

Registration No.: -

Unit: **12, Floor: 13, LANDMARK PLAZA,**

KRA PIN: **A002562727R**

Plot: **LR NO 1/886, ARGWINGS KODHEK, Kilimani,**

Postal address: **3289**

**Dagoretti North, Nairobi**

To engage in the following activities/businesses/occupations:

600 PROFESSIONAL, TECHNICAL AND FINANCIAL SERVICES

**Mini professional and technical services firm with -1 person acting individually with 1 computer/1 m**

- All Other Professional, Scientific, and Technical Services

Having paid a license fee of **KES. 15,000.00 (FIFTEEN THOUSAND SHILLINGS ONLY)**

100	SBP	KES. 10,000.00
200	FIRE	KES. 4,500.00
400	PEST CONTROL	KES. 500.00

**BUSINESS UNDER THIS PERMIT SHALL BE CONDUCTED AT THE ADDRESS AS INDICATED**

#### DISCLAIMER

Issuance of this permit does not exempt the permit holder from compliance checks, inspections, top-ups or adherence to applicable laws. The Nairobi City County Trade Licensing Act 2019 Section 17(1) gives the Director the powers to suspend or cancel a permit in case of false information or non-compliance with the applicable laws.

Date of Issue: **21 Jan, 2025**

POWERED BY

By Order of:



UBP159714

**E-Verify**

Scan this QR Code to verify the authenticity of this document

Alternatively visit [nairobiservices.go.ke/verify](http://nairobiservices.go.ke/verify) and type in the document number.

— Let's Make Nairobi Work —  
[www.nairobi.go.ke](http://www.nairobi.go.ke)



# Our Current and Past Clients

Institute Pasteur		
University of Virginia		
BioMérieux - Africa Medical Affairs		
Astra Zeneca		
World Health Organization, Department of Reproductive Health		
World Health Organization, Global Malaria Programme		
Global Alliance for Veterinary Medicines		
AURUM Institute, South Africa		
Drugs for Neglected Diseases Initiative (DNDi)		
Emerging Infectious Diseases Institute, University of Khartoum		
Global Antibiotic Research and Development programme/DNDi		
Janssen, Global Clinical Development Operations		
International Centre for Insect Physiology and Ecology		
University of Oxford/University of Nairobi collaboration		
Infectious Diseases Institute, Makerere University		
BIORITHM Singapore		
The Clinical Trial Company, United Kingdom		
National Institute of Medical Research		
Pharmalys CRO		
OnQ CRO		
Remedy & Co CRO Japan		
FIND		
National Syndemic Diseases Control Council		