



AI-powered Solutions

# INVESTOR PRESENTATION

**2023**

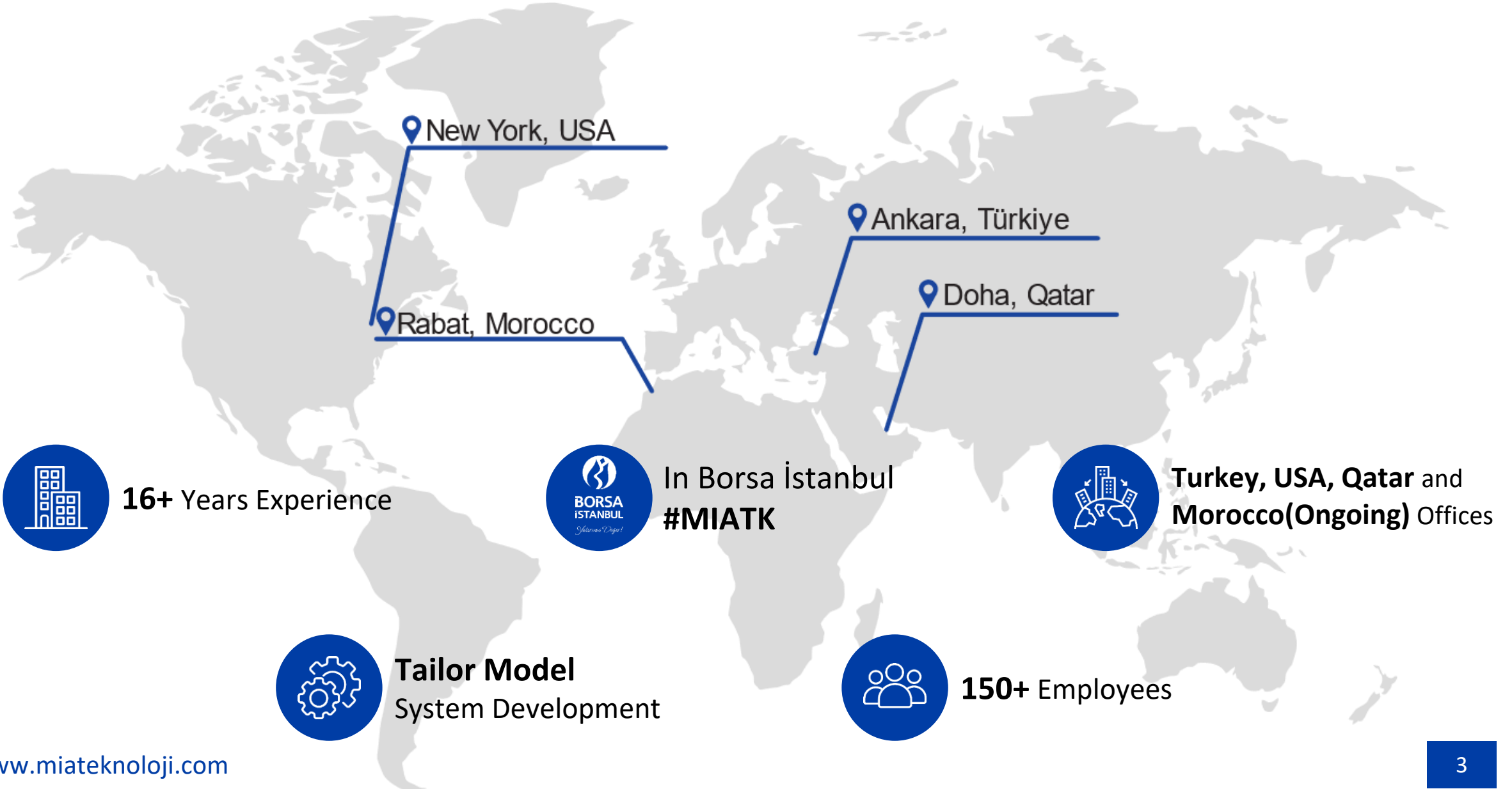
[www.miateknoloji.com](http://www.miateknoloji.com)

# LEGAL NOTICE

---

This presentation reflects the analysis of information and financial statements about MİA TEKNOLOJİ A.Ş. (“MİA” or “the Company”) as well as their views on future prospects in line with the events anticipated by the Company's management in the future. Although the accuracy of the information and analyses given and the expectations are believed to be realistic, depending on the change of the underlying factors of the predictions, the results for the future may deviate from the predictions given here. The Company, the Company's directors or employees, or any other relevant person, shall not be liable for any damages that may arise from the use of the information in this presentation. All statements may contain forward-looking statements, including but not limited to notices made in this bulletin, launches of our new business, operations, financial position and business strategies. Although the Company believes that the expectations reflected in these forward-looking statements are reasonable at the moment, it cannot guarantee that these expectations will be fulfilled correctly. The Company assumes no responsibility or liability for the accuracy or completeness of the information contained in this presentation by its affiliates, board of directors, management, employees or agencies, or any other written or oral information provided to the relevant parties or consultants.

# ABOUT US



# FIELDS OF ACTIVITY

A dark blue panel featuring a wireframe face on the left and a person's profile on the right. The text "IDENTIFICATION TECHNOLOGIES" is centered at the bottom. Faint background text includes "CAM: A2", "ROTATION-BALANCE-SPEED", and "CONNECTED".

**IDENTIFICATION  
TECHNOLOGIES**

A dark blue panel showing an industrial facility with tall smokestacks at night. The text "SAFETY TECHNOLOGIES" is centered at the bottom.

**SAFETY  
TECHNOLOGIES**

A light blue panel with a network of white icons including a medical bag, a heart, a thermometer, and a water drop. The text "HEALTH INFORMATION TECHNOLOGIES" is centered at the bottom.

**HEALTH  
INFORMATION  
TECHNOLOGIES**

A dark blue panel showing a city skyline at night with light trails from cars on a highway. The text "SMART TRANSPORT TECHNOLOGIES" is centered at the bottom.

**SMART  
TRANSPORT  
TECHNOLOGIES**

A dark blue panel showing a person wearing a VR headset and holding a transparent digital object. The text "METAVERSE TECHNOLOGIES" is centered at the bottom. Faint background text includes "88 1276", "Trans Gear 1325", "S/N 3941601", and "MT-400003".

**METAVERSE  
TECHNOLOGIES**

A dark blue panel showing hands typing on a laptop keyboard with a padlock icon overlaid. The text "CYBER SECURITY TECHNOLOGIES" is centered at the bottom. Faint background text includes "STAT".

**CYBER SECURITY  
TECHNOLOGIES**

A panel showing a close-up of white electrical connectors with orange wires. The text "ELECTROMOBILITY" is centered at the bottom.

**ELECTROMOBILITY**

A panel showing a laptop screen with code and hands typing on the keyboard. The text "SYSTEM INTEGRATOR" is centered at the bottom.

**SYSTEM INTEGRATOR**

# FIELDS OF ACTIVITY IN SUMMARY



## IDENTIFICATION AND VERIFICATION

With its biometric, card and mobile technologies; it makes secure and quick authorization in areas such as access control, payment, etc.



## INTEGRATED FACILITY SECURITY AND MANAGEMENT

Allows facilities to monitor and control all the security management that A-Z needs through a single platform.



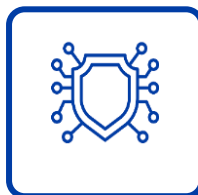
## HEALTH INFORMATION TECHNOLOGIES

It facilitates the execution of all processes related to the systems developed for the country, hospitals and family physicians.



## SMART TRAFFIC MANAGEMENT SYSTEMS

It offers traffic systems that provide safety and control to provide livable cities for pedestrians and vehicles.



## CYBER SECURITY

Ensures the security of organizations with systems using ML and AI against cyber threats and malware, and performs vulnerability analysis.



## INFORMATION SECURITY

Analyzes the information security needs of the organizations according to the legal requirements and the scope of the organization and directs them to meet the necessary needs.



## SHARED MOBILITY

It contributes to urban mobility and sustainable transportation by providing easy and accessible mobility for everyone in the city.



## ELECTRIC VEHICLE CHARGING SOLUTIONS

It creates charging stations and solutions for the dissemination of electric vehicles in order to reduce energy efficiency and the use of fossil fuels.



## IMMERSIVE TECHNOLOGIES (METAVERSE)

Covers virtual reality, augmented reality and mixed reality technologies. Creates solutions to the needs of sectors such as education, sales and marketing.



## ARTIFICIAL INTELLIGENCE TECHNOLOGIES

Creates ready-to-use computer vision solutions supported by ML and AI, scalable to needs.



## ELECTRONIC PAYMENT COLLECTION

Creates traceable systems to solve time and cash problems for use in public transport, mobility and highway toll booths.



# IDENTIFICATION AND VERIFICATION

Enables rapid authorization in security auditing, authentication, payment systems and access control procedures by performing user recognition and verification with various technologies.



**Facial Recognition**



**Iris Recognition**



**Fingerprint**



**Finger Vein Print**



**Mobile Identification**



**Smart Card**



**+50**  
**Agencies**

# INTEGRATED FACILITY SECURITY AND MANAGEMENT

It is a group of systems that allows the monitoring and supervision of the security and management of one or more facilities through a single structure.

Allows the integration and operation of the system over the existing hardware without the need for institutions to make a new hardware investment.



**+40**

**Agencies**

## HEALTH INFORMATION TECHNOLOGIES

Facilitates the service and supply chain functions related to the medical, administrative, financial and legal processes of hospitals and plays a role in the integration of the country's health system.



**Facilitates the hospital and health system processes of patients who aim to improve the operational activities of healthcare professionals.**



**Integrates, meets and manages all administrative and software needs of hospitals.**



**Provides decision support systems with artificial intelligence-supported software in the field of health informatics.**



**Has a scalable structure for each country by providing national health system integrations.**



# 10

**Biggest University & City Hospitals**



# SMART TRAFFIC MANAGEMENT SYSTEMS

Monitors traffic in city centres and on motorways, allowing for the recognition of vehicles and their compliance with local inspection rules, reducing safety and time spent in traffic.

**We have an Electronic Audit System 5 years left (9.5 years in total).  
+400.000 Vehicles penalty to be paid**



**Electronic monitoring system**



**Smart intersection and signaling systems**



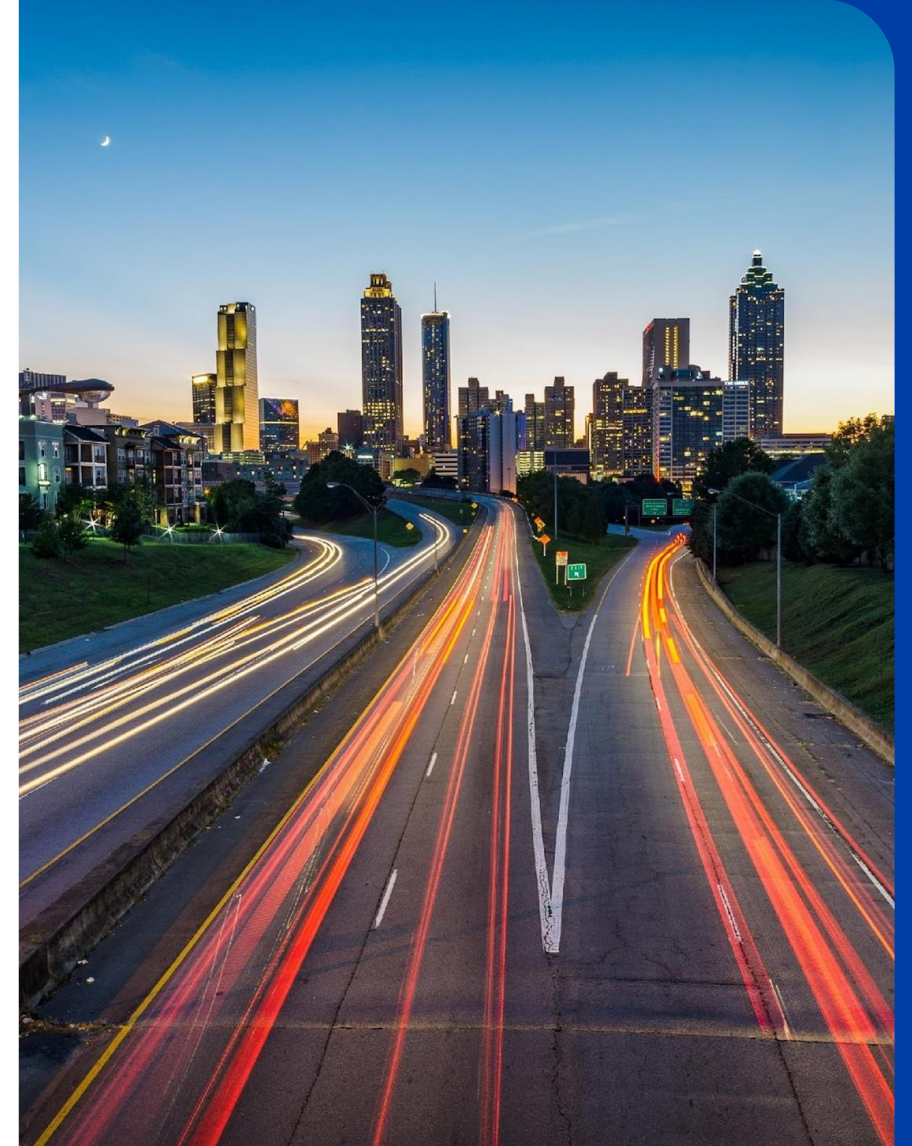
**License plate, make, model and color recognition**



**Vehicle instant and average speed detection**



**Command and control and data center setup**



# ELECTRONIC TOLL COLLECTION



Offers traceable payment methods to solve the problem of time and cash in transportation. It can be used in public transportation, car rentals and highway tolls.



**Payment at Contracted Points of Sale**



**Mobile Wallet and Inter-User Money Transfer**



**Shared Car Rental Payments**



**Possibility of Payment by Different Methods in Public Transport;**

- QR Code Scanning,
- NFC Mobile and Card Scanning,
- Vehicle License Plate Code Entry,
- Bluetooth





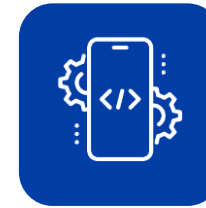
## SHARED ELECTRIC VEHICLES /MOBILITY

Provides a different approach to urban mobility by providing sustainable, easy and accessible mobility for all in the city.

**+30.000 Active Users**



**Electric Vehicle  
Operation**



**End User and  
Management  
Software**



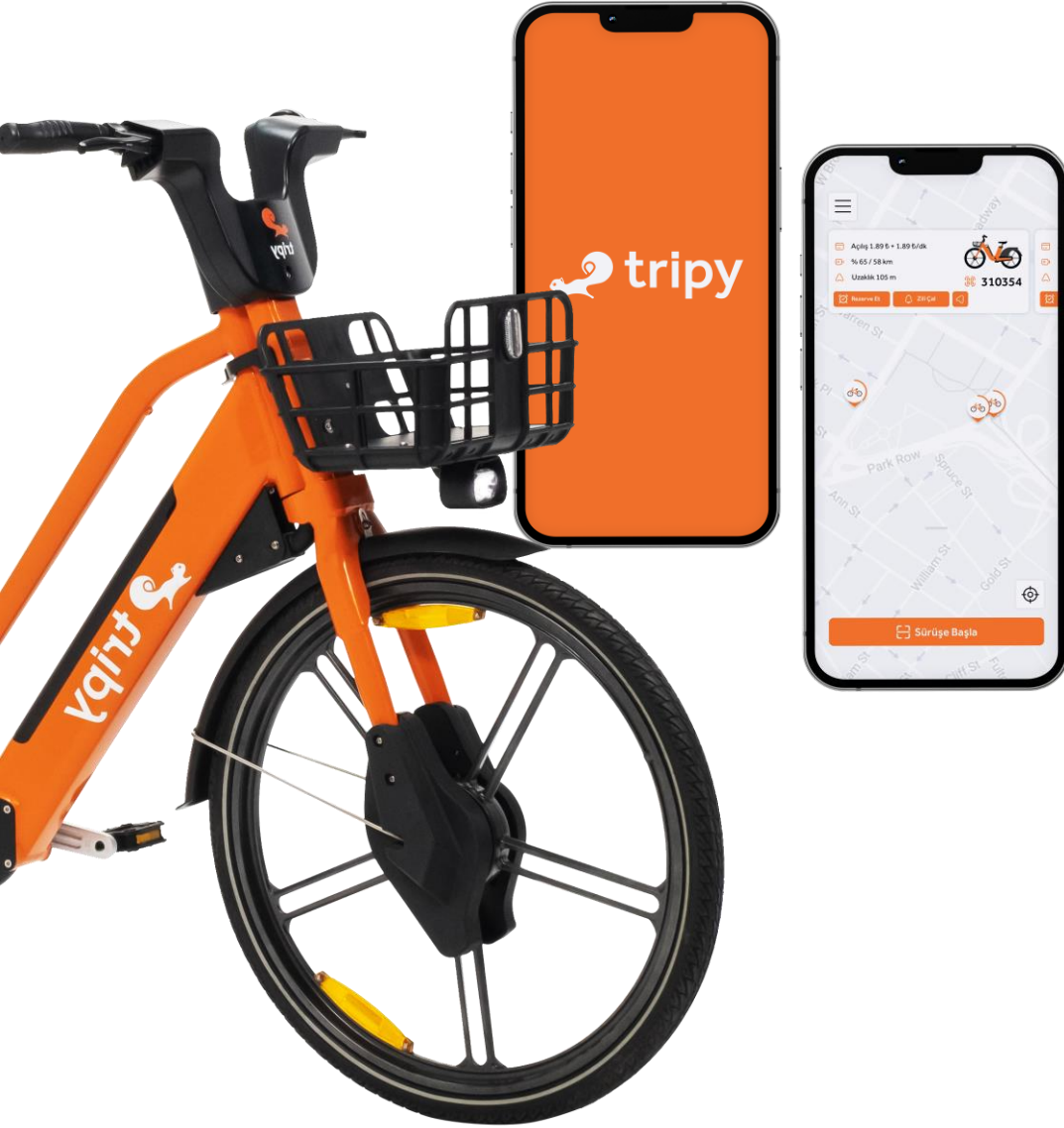
**Operations  
Management**



**Electrical Charging Station  
Software and Projects,  
Parking Stations**



**Integration and  
installation services**



## TRIPY MOBILITY TEKNOLOJİ A.S.

**Tripy**, as a subsidiary of **MIA Teknoloji**, established Turkey's first electric bicycle sharing company in October 2022 to produce last-mile solutions with smart city technologies and sharing-based technologies.

**Our mission** is to provide accessible, practical and sustainable transportation for everyone, as well as to create urban mobility by providing last mile solutions with a healthy, environmentally friendly transportation alternative by mobilizing people.



Domestic software and  
operation developed with  
our own resources



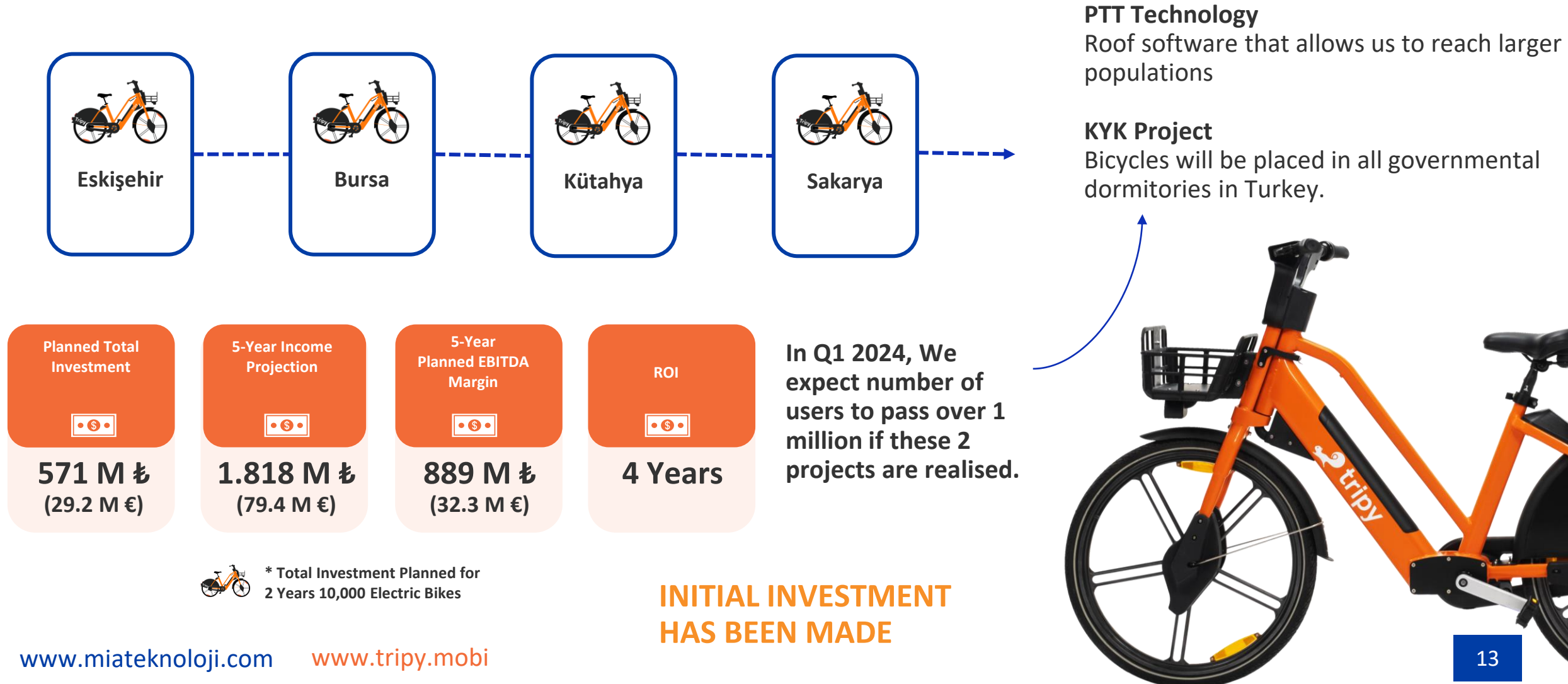
10-year exclusive contracts  
with local governments for  
business



It plans to produce electric bicycles in Turkey in  
**Q1 2024.**



Discussions with foreign investment groups, green energy funds and other local governments in the field of **electromobility** are ongoing.



# ELECTRIC VEHICLES CHARGING STATION NETWORK TECHNOLOGIES

The installation of AC and DC charging stations for charging widespread electric vehicles aims to offer mobile application technologies and other technologies for electric lifestyle.



**Installation of Charging Stations and Infrastructure Service**



**Mobile Application and Management Software for End Users**



**Reservation System for Use of Charging Stations**



**24/7 Maintenance and Repair Service**



**Integration with Shared Electric Vehicle**

**79** Installed Location  
67AC 12DC

**INITIAL INVESTMENT HAS BEEN MADE**



## METaverse - IMMERSIVE TECHNOLOGIES

Immersive technologies include virtual reality, augmented reality and mixed reality technologies. Provides solutions to the needs of sectors such as education, sales and marketing.

### Products:

- WorkARia Remote Maintenance (**Automotive Giant**)
- Metaverse WorkSpace
- Training Practices with MR
- Metaverse Training Class
- Structure Audit Applications with AR
- Vocational Training and Occupational Safety with VR
- Indoor Mapping and Navigation with AR
- AR Applications



### Virtual Reality (VR)

A new three-dimensional world!

Virtual reality is a technology that serves to experience images in three-dimensional reality instead of perceiving them from two-dimensional screens.



### Augmented Reality (AR)

Shapes the real world!

It is the presentation of the real world to the user with digital objects, sounds, images and graphics.



### Mixed Reality (MR)

Combines the real world with the virtual world!

They are environments where physical and digital objects coexist and interact in real time.



Click here for the introduction video!





- ✓ We participated in **METATIATIVE LLC**, which was established in the **State of Delaware, USA**, as a shareholder with a rate of 26.10%. Within the scope of metaverse technologies, the company targets activities in the fields of technopark installation, blockchain and NFT, cloud technology, design and simulation.
- ✓ We carry out "**Metaverse Language Campus Project**" with colleges, universities and large companies in the field of Metaverse .
- ✓ Within the scope of the Language Acquisition Application , which is supported by the **Metaverse** and **Mobile Application** infrastructure, will be published on international platforms and will serve in 12 languages.
- ✓ The Project is going to be realised at the end of October 2023.
- ✓ **Ministry of Education: Content Management Project (World Bank, Budget: \$ 100 million)**
  - ✓ Foreign Language Education App for Private Colleges
  - ✓ Foreign Language Education for Governmental and Private Institutions





- ✓ **Investment plan studies on biometric authentication** systems are ongoing.
- ✓ We aim to be a partner in technological and hardware transformation within the scope of identity verification service to be performed in public institutions and organizations (health, title deed, notary, bank, etc.).
- ✓ We run the biggest governmental bank's biometric operations including 1743 branches overall Turkey and Istanbul Finance Center.
- ✓ We are working on one of the governmental bank's biometric operations in Istanbul Finance Center.



- ✓ We are in the process of developing **smart waste management project** devoted at **Environment and Climate Change**.
- ✓ The **IoT Device**, which we have developed specifically for Garbage Containers, will instantly or hourly measure important data such as "**occupancy, temperature, humidity, location**" in the container and transfer the data to the web portal using cellular connection via GSM/GPRS.
- ✓ It will monitor and **route optimization** of domestic, medical, single and recycled wastes and report the collection service in real time at garbage/street/waste type level. Half will eliminate the collection of empty containers.
- ✓ We agreed on the Project with **Gölbaşı Municipality**.



## BUSINESS PARTNERS

**NEC**

**aselsan**

 **HAVELSAN**

**aselsan**  
**NET**  
TEKNOLOJİNİN OLDUĞU HER YERDE



**AXIS**  
COMMUNICATIONS

**SONY**

**ahua**  
TECHNOLOGY

**HIKVISION**

**MEGVII** 旷视

 **BOSCH**  
Invented for life

**DELL**

**BCD**

 **milestone**

 **KUTEM**  
GAZİ ÜNİVERSİTESİ, KENT İÇİ ULAŞIM TEKNOLOJİLERİ  
ERİŞİBİLİRLİK, UYGULAMA VE ARAŞTIRMA MERKEZİ

## CLUSTERINGS

  
**AUSTURKIYE**  
**ITS TURKEY**

  
**TÜRKİYE**  
**SİBER GÜVENLİK**  
**KÜMELENMESİ**

**TSSK**  
Teknokent Savunma Sanayii Kümelenmesi  
Teknokent Defence Industry Cluster

# QUALITY MANAGEMENT



ISO IEC 15504 /  
SPICE Lvl 2



ISO 9001:2015



ISO 14001:2015



ISO  
20000-1:2011



ISO 45001:2018



ISO  
22301-2012



ISO 27001:2017



ISO  
39901-2012

## 8ISO and SPICE LVL2 Certificates



**National Confidential Facility Security and NATO  
Security** Certificates



**Military Factories Approved  
Supplier** Certificate



**e-Turquality Stars of IT** program studies



**17** project **copyright registration certificates**



**12** registered trademarks



**"Hand Sterilization and Controlled Mask  
Distribution Device" and "Contact and Audible  
Kiosk" products 10 years registration**



**TÜR (Technological Product Experience Certificate)  
Multiple Biometric Identification System**



**Investment Incentive Certificate**



# MAJOR COMPLETED PROJECTS



**KREDİ VE YURLAR  
GENEL MÜDÜRLÜĞÜ**

**TR Ministry of Youth and  
Sports Credits and  
Dormitories G.D**  
Security and Management  
Systems of Dormitories  
Nationwide



**Millî Kütüphane**  
KÜTÜPHANELER VE YAYIMLAR GENEL MÜDÜRLÜĞÜ

**National Library**  
Campus Security and  
Management System



**Kalyon Holding**  
Karapınar SPP Plant Security  
And Lighting Systems



**ETİ MINING**  
Safety and management  
systems in mines across the  
country



**OSYM**  
Campus Security and  
Management System



**Samsun DEAFLYMPICS**  
Campus Security and  
Management System



**University of National  
Defense**  
Campus Security and  
Management System



**Ziraat Bankası**  
Nationwide Operating Rooms  
Access Control System



**Akdeniz Uni. Hospital**  
Hospital Information  
Management System and Facility  
Security and Management  
System



**Ministry of National  
Defense Land Forces  
Command**  
Campus Security and  
Management System



**Anadolu University**  
Campus Security and  
Management System



**Uludağ Uni. Hospital**  
Hospital Information  
Management System and Facility  
Security and Management  
System

December 2022

JUNE 2023



Employee Increase

68



150+



Female Employee  
Increase

17



31



Technical Employee  
Increase

72



81



Salary Increase of **90.86%** in 2022 & Private Health Insurance Application



Unit Manager  
Distribution

**7** departments out of **14** are **managed by** women

GAZİTEKNO PARK

ODTÜ·TEKNOKENT

It is located in **Gazi University Technopark** and **METU Technopark** clusters and carries out **project activities** under these roofs.

Total from 2006 to 2021

2022 Total



Technopark Total Number of Projects

33



52



Artificial intelligence-based disease detection projects



Augmented reality-based remote maintenance applications



Mixed reality-based robotic control systems



Metaverse-based meeting rooms and virtual bazaar applications



Virtual reality base training applications



Innovative mobile applications within the scope of mobility



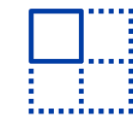
Innovative and all-round electronic mobile payment systems



Artificial intelligence-based secure public transport management systems






Machine learning-based industry efficiency forecasting systems



Deep learning based boundary detection systems

As of **2023** , **23** out of **52** projects have not **yet** turned into sales.

	<u>31.12.2021</u>	<u>31.12.2022</u>	<u>30.06.2023</u>
 R&D Income ( Annual )	<b>60.326.769</b>	<b>342.622.197</b>	<b>218.787.950</b>
 Capitalization Expenses ( R&D Investments) (Cumulative )	<b>153.252.814</b>	<b>334.232.035</b>	<b>476.340.744</b>
 Size of Assets	<b>300.674.516</b>	<b>750.751.923</b>	<b>1.052.340.669</b>

National and international call programs followed and applied for:





# MIA

## TEKNOLOJİ



Ankara



New York



Doha

AI-powered Solutions



[www.miateknoloji.com](http://www.miateknoloji.com)