



ANTHROVA

The Future of Human-Like AI Workforce

Anthrova = AI That Works Like Humans

Building The World's #1 Market Value AI Application Ecosystem

- An intelligent collaborative platform that focuses on serving the Businesses.
- Handle various tasks in real-world work through thinking, deep search and reasoning, and combined with pan-industry workflows.



Why Businesses need Anthrova ?

20%

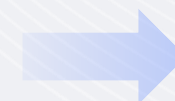
Standardized tasks



*Traditional
SaaS*

80%

Temporary, vague, and difficult to
predict tasks



Anthrova

Paint Points

5 Disadvantages of Traditional Agents

**INABILITY TO BREAK DOWN
COMPLEX GOALS**



LACK OF COLLABORATIVE AWARENESS



EPHEMERAL MEMORY



UNABLE TO ADAPT



LACK OF GOAL ORIENTATION



**Businesses need AI employees
that empower human-like
interaction abilities with
intelligent execution.**

Solution - Human-AI Interaction -> Intelligent Execution

TriNOVA-7b-128k



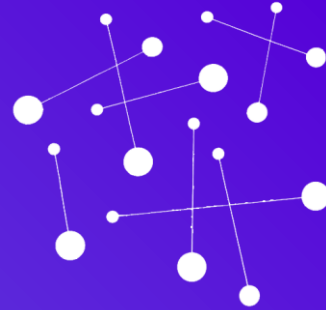
Let Agent understand you

TriNOVA LLM can perceive speech, images, and even your tone and emotions.

Specification / Comparison	AI Agent	Anthrova
Task Nature	Single, clear, independent task	Cross-domain, multi-objective, long-process tasks
Collaboration requireRents	No collaboration required	Multi-agent dynamic communication and resource sharing
Decision-Making Level	Local decision-making	System-level global optimization
Complexity	Low (rule-driven)	High (requires reasoning, planning, and adaptation)

Solution - Human-AI Interaction -> Intelligent Execution

FlowMind -7b-128k



Let the Agent do the work

FlowMind model allows it to turn a sentence into a complete workflow.

Characteristics	Generative AI	AI Agent	Anthrova
Autonomy level	Low (needs prompt)	Medium (autonomous tool use)	High (manage the entire process)
Internal interaction	None (baseline)	A specific tool or API	multiple agents/tools
External interaction	N/A	Not applicable	High (interaction between agents)
Decision making	Mode selection	Tool use decisions	Goal decomposition and task allocation
Learning & adaptation	Static (pre-trained)	Possible evolution of tool selection strategy	Learn from results
Use of memory	No memory or short context window	Optional memory or tool cache	Shared context/task memory
Coordination strategy	None (single-step processing)	Independent task execution	Hierarchical or distributed coordination

Technological Advantage



Super-humanized multimodal interaction (TriNOVA)

- MOE architecture (64 experts, 1/8 activated each time)
- 7B parameters, supports 128k contexts
- End-to-end architecture (170ms/text FT, 300ms/audio FT)
- Emotional vector understanding and output
- Support lightweight private deployment



Agent Workflow Engine (FlowMind)

- MOE architecture (64 experts, 1/8 activated each time)
- 7B parameters, supports 128k contexts
- Agent task automation, success rate $\geq 95\%$
- RAG knowledge enhancement
- MCP data standardization
- Execution log \rightarrow self-scoring \rightarrow fine-tuning to form a self-evolution flywheel
- Support lightweight private deployment



Secure and scalable

- Supports multiple data compliance requirements in Hong Kong, the Middle East and other major markets (supports data localization)

Anthrova Covers 300+ Scenarios



Revenue Model


Recurring Revenue with Scalable Pricing



Strategic Cooperation


R&D, Strategic Investment, Regional Business Development

Revenue 1




Outcome-Based Pricing
15% profit split

Revenue 2



SaaS License + API Usage

Revenue 3



SaaS License + Customized Agent Platform

Commercial Banks Scenarios

Anthrova
Analyzing

Help me reconcile the transaction flow of Stellar Tech Group Ltd

Understood. Please wait...

Processing request for batch reconciliation of multiple bank accounts: 🤖

- 1 Calling MCP API to retrieve transaction data for target enterprise and sub-accounts
- 2 Standardizing fields: transaction date, amount, account, description, balance
- 3 Detecting anomalies: high-frequency transfers, similar amounts, balance jumps
- 4 Performing aggregation and grouping of transactions
- 5 Generating standardized bank reconciliation analysis report

Type your message here...

Workspace

Bank Reconciliation Batch Processing Report

Multi-Account Transaction Processing System - BatchProcessor v3.0

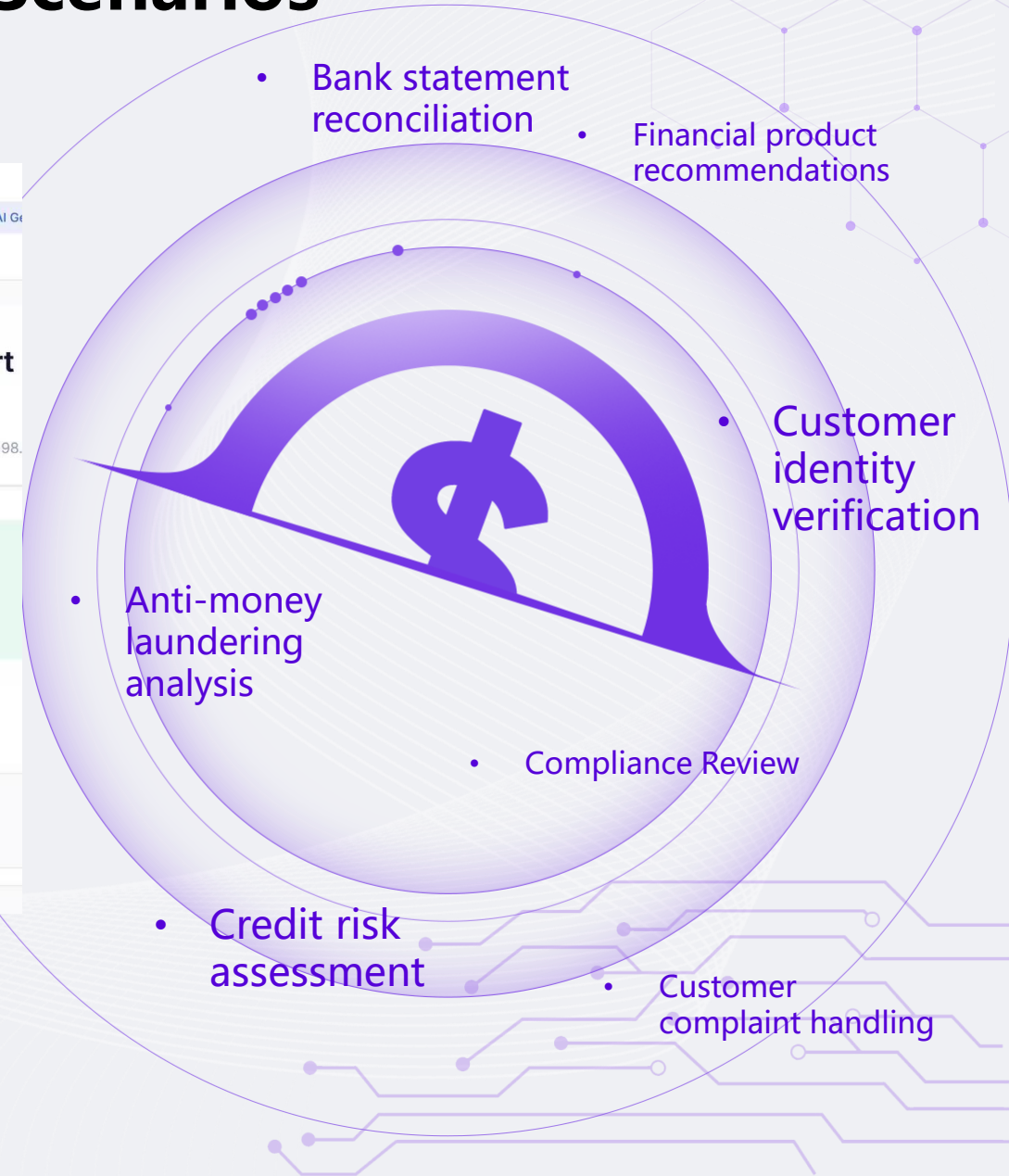
Report ID: BSP-2024-1206-004 Status: **Completed** Data Quality: 98.5%

✔ **Batch processing complete:** Successfully processed 15 bank accounts for Stellar Tech Group, covering 52,847 transactions from Nov 1-30 with total processed amount of \$3.86B. System completed data cleansing, anomaly detection, reconciliation, and trend analysis.

Account Summary Analysis

Corporate Bank Account Statistics

ENTERPRISE NAME Stellar Tech Group Ltd.	ACCOUNTS PROCESSED 15 accounts (across 7 banks)
--	--



Features



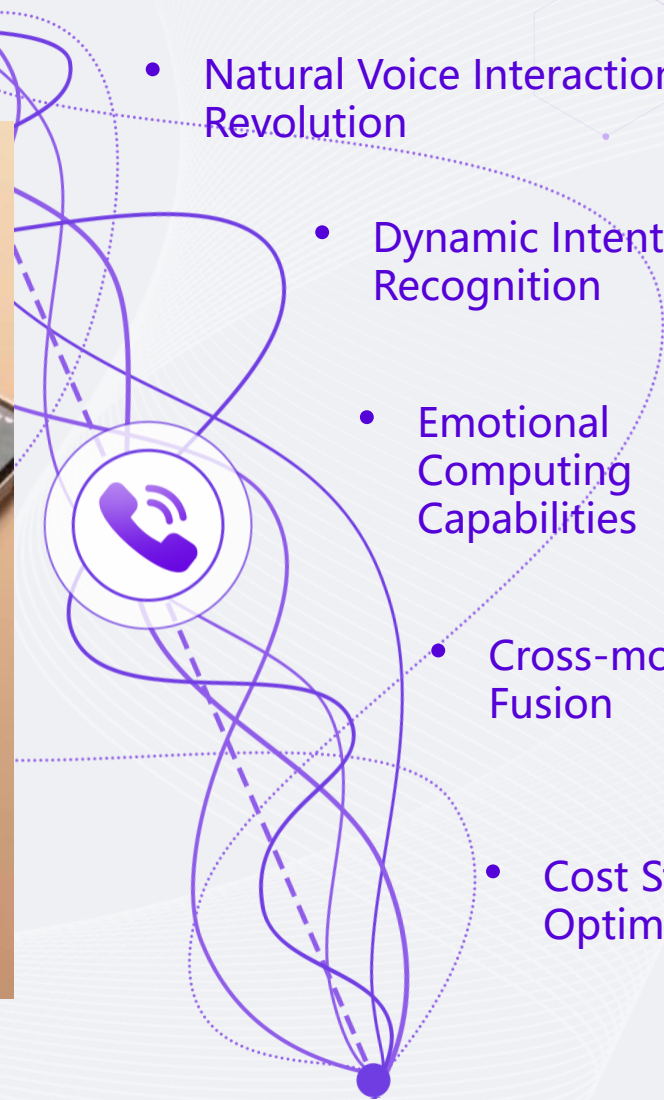
- Natural Voice Interaction Revolution

- Dynamic Intent Recognition

- Emotional Computing Capabilities

- Cross-modal Fusion

- Cost Structure Optimization



Why us?



Super humanized interactions

From interaction to execution on an integrated platform

Intelligent task execution

Recognized by China Mobile & 100+ banks & hospitals

Flexible, secure, scalable structure

Surpass iFlytek & ByteDance

**Top team
Global vision**



Core Team



MARK CEO & Founder

- **PhD from Guanghua School of Management, Peking University, Fulbright Scholarship recipient;**
- Serial entrepreneur in e-commerce and data mining industry;
- Built multiple startups based on artificial intelligence, blockchain;



GUO CTO & Co-Founder

- **VR/AR technology lecturer and master tutor at Peking University;**
- Microsoft MRPP (MR technology partner);
- 12 years of continuous entrepreneurship in the VR/AR
- Nominated for the British Academy Awards (BAVGA);



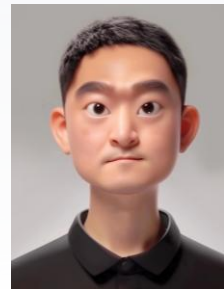
DONG Graphics Engine Expert

- **Master Degree of Stanford University, USA**
- Former Professor at Peking University, specializing in computer vision and graphics
- Founder and CTO of Guyou Technology, China.com, and Shikexing Network
- **Student of Turing Award winners PATRICK HANRAHAN, JEFF ULLMAN**



王哲 AI Algorithm Scientist

- Responsible for art workflow construction, art tool development, and environmental special effects research;
- Master of CS/SE, Peking University.
- Graphics R&D Engineer;
- Microsoft Research Asia, R&D of the Innovation Engineering Group;
- Technical Art of Perfect World Sandbox Project.



SONG Chief Architect

- **Senior AI + ICT expert**
- 14 years of AI engineering with multiple AI + ICT projects experiences in China Mobile, Huawei, Alibaba, and Tencent.



BINGWEI Chief Scientist

- **R&D on graphics and image algorithms**
- Master of CS/SE from Peking University, PhD of CAD&CG from Zhejiang University;
- Researcher of the State Key Laboratory of Computer-Aided Design and Graphics;
- Serial entrepreneur in VR and gaming industry;

Global Development Roadmap

YEAR 1



-Bridgehead in Hong Kong and UAE, working with the local international finance and innovation ecosystem to establish an Agentic AI innovation lab for enterprises.

YEAR 2



-Starting with pilot customers in Hong Kong and the Middle East, accounted for more than 40% of global revenues.

YEAR 3



-Create an enterprise-level AI application innovation hub
-Complete the incubation of more than 30 enterprise-level Agentic AI products

YEAR 4



-Serving more than 4,000 MNCs in 50+ countries, achieving globalization of business.

Strategy Blueprint – East Asia & MENA

Based in Hong Kong, connected to the Middle East, and going global

**Incubation of
local
entrepreneurs**

**Establish the
MENA HQ**

**Participate in
building the
AI ecosystem**

**Building AI Pilot
Projects**

**Co-building an
AI regulatory
sandbox**

Fundraising Plan

Series A
Equity \$20M

Post-money valuation of \$100M

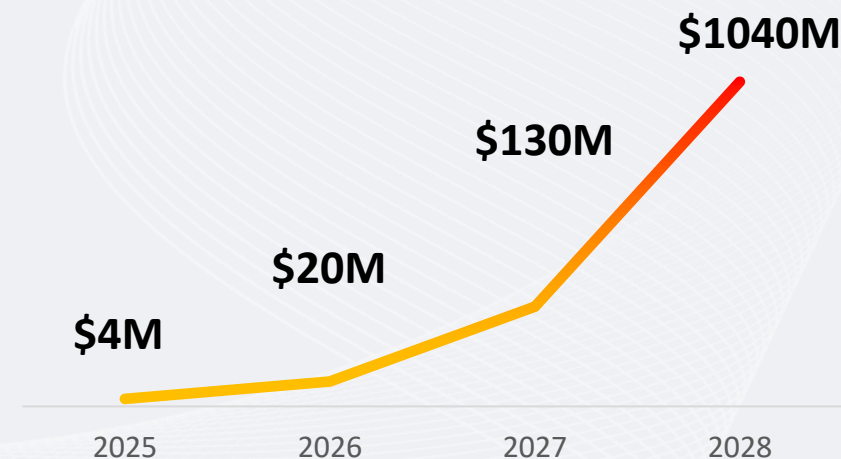


Use of Fund

Team	40%
Product R&D	25%
Marketing	15%
Arabic LLM	15%



Revenue Forecast



ROI

100X+ MOIC in 5 years

Financial Forecast

	2025	2026	2027	2028
Revenue (\$)	4M	20M	130M	1040M
Expenses (\$)	3M	8M	40M	200M
Gross Profit (\$)	0.5M	5M	55M	450M
Revenue Growth		400%	550%	700%



ANTHROVA

**An intelligent partner for every employee —
understands and complete your needy works**

AI EMPOWERS HUMAN