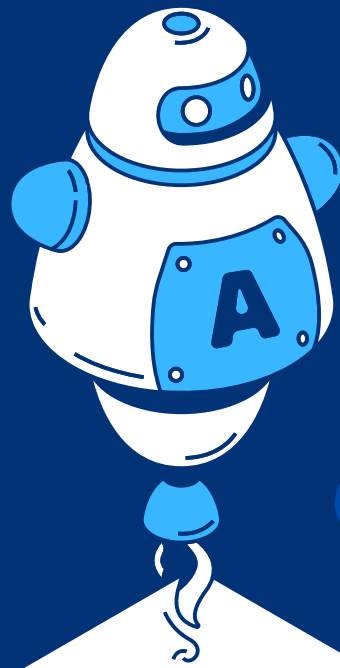


equlon 



TETA MINI EQULON

Teta Mini - IoT Ecosystem for Asset Tracking

Innovative Approach

Teta Mini is the solution you need in many sectors with its innovative features, international use for Asset Tracking in different environments and needs, and sustainable cost.

Fleet Management System

International Logistics Management System

Cold Chain Management

Smart City Applications

Digital Agriculture Applications

APPLICATION AREAS

Passenger Vehicle

Agricultural Vehicles (Tractor)

Construction Machinery (Excavators etc.)

Truck

Bus

Service Vehicles

Taxi

Motorcycle

Scooter / E-Scooter

Truck

Pallet / Load Tracking

Caravan

Bicycle

Boat / Yacht

Drone

Asset Tracking (Container)

Security Equipment (portable devices)

Algorithm Developer

Electric Vehicle Charging
Station

Construction Equipment

Supported Features



GSM(LTE, 2G) / GNSS
(eSIM- Soft SIM)



Bluetooth Low
Energy (BLE)



Wi-Fi



Low Power
Consumption



Over the Air
Updates (OTA)



Blockchain

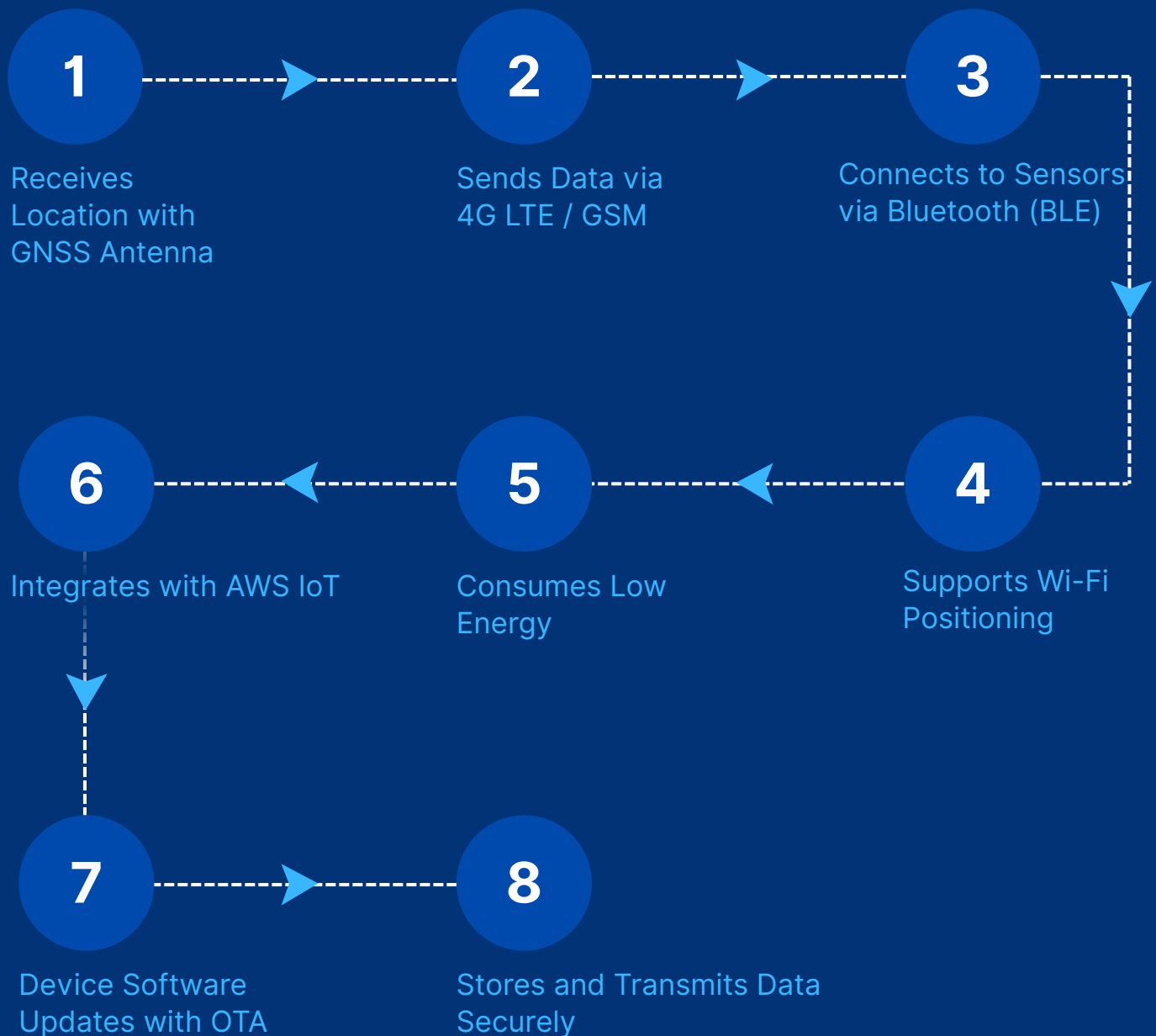


Statistics



Generative
AI

Work Flow



Features

Precise Positioning (GNSS + Hybrid Technologies)

Teta Mini provides high-precision positioning worldwide thanks to GPS, GLONASS, Galileo, and BeiDou support. In enclosed spaces or areas with weak satellite reception, it utilizes Wi-Fi-based hybrid positioning technology to provide uninterrupted tracking. This allows vehicles, machinery, or portable assets to be tracked reliably in all conditions.

Uninterrupted Connection (4G LTE / 2G GSM Fallback)

The device maintains a constant connection over 4G LTE and GSM networks, transmitting data instantly to the cloud. Location, speed, route, and sensor data are securely transmitted and instantly viewable. This feature increases operational efficiency, particularly in fleet management, logistics, and security applications. Because it operates on LTE connection standards, high bandwidth eliminates data packet size limitations. Uninterrupted communication maintains system reliability even in critical situations.

Unlimited Connection: Soft SIM Compatible Smart Technology

Theta Mini eliminates the operational challenges and costs associated with physical SIM cards. Thanks to its advanced Soft-SIM infrastructure, your device operates independently of carriers in over 200 countries and automatically connects to the most suitable network. This technology eliminates the need for physical intervention in your international logistics and fleet management operations, providing seamless tracking and cost-effective solutions. You no longer need to change SIM cards or maintain contracts with different carriers in different countries.

Smart Sensor Integration (BLE & IoT)

Thanks to Bluetooth Low Energy (BLE) support, Theta Mini can easily communicate with surrounding sensors. For example, it transmits data from temperature, humidity, or door sensors to the cloud, providing much more comprehensive monitoring capabilities. This feature is particularly valuable for cold chain transportation, security solutions, and smart city applications. It also creates a flexible infrastructure through its rapid integration into IoT-based systems.

Low Energy Consumption and Long-Lasting Operation

The Theta Mini is designed with energy efficiency in mind. It places minimal strain on the vehicle battery and ensures long-term uninterrupted operation thanks to optimized power management. This feature reduces device maintenance costs and ensures reliability in field operations. Low energy consumption significantly reduces operating costs, especially in scenarios where fleets use multiple devices simultaneously.

Artificial Intelligence- Assisted Energy Management

Beyond standard tracking devices, Teta Mini features an intelligent energy management system. Our AI-based algorithms continuously analyze the device's operating conditions, sensor activity, and data transmission frequency to dynamically optimize power consumption. This results in up to 30% less energy consumption compared to traditional devices. The result: significantly longer battery life, minimal maintenance, and sustainable operational efficiency.

Instant Intelligence: Edge Computing

Introducing Edge Computing technology, which revolutionizes data transfer. Equilon Teta can process collected data directly on the device before sending it to the cloud.

Instant Response: Because critical data is analyzed locally, the delay required for instant alerts and decisions is minimized.

Low Data Cost: Only meaningful and processed summary data is sent to the cloud, significantly reducing network load and communication costs.

Uninterrupted Reliability: Data processing and critical functions continue to operate even when the internet connection is weak.

Secure and Cloud-Supported Infrastructure

Integrating with AWS cloud technologies, Teta Mini enables real-time data processing, storage, and reporting. AWS-provided security protocols protect data integrity and prevent unauthorized access. Furthermore, devices can be updated remotely via OTA updates, ensuring the system is always running with the latest software and security patches. This makes Teta Mini not just a hardware product but also a secure, flexible, and scalable monitoring platform.

The security and integrity of your data is our top priority. Fluxion Teta offers a blockchain-based infrastructure, along with standard security protocols for the transfer of sensitive data. This structure ensures that every data packet transmitted from the device to the server is immutable, transparent, and 100% traceable. You can always be assured of the integrity of your data, especially in operations where critical data such as cold chain, asset tracking, and security are managed.

Projects Used



Fleet Management System

Teta Mini tracks the real-time location of company vehicles, enabling route optimization, fuel efficiency, and driver safety. Fleet managers can monitor all vehicles from a single dashboard.

Cold Chain Monitoring

Measures temperature and humidity data in real time with Bluetooth sensor integration. Reduces the risk of spoilage in cold chain transportation, improves quality, and improves customer satisfaction.

Smart City Applications

Municipal vehicles can be used in public transportation and shared mobility systems. They provide efficiency in city management and more transparent service to citizens.

International Logistics

Teta Mini provides seamless connectivity and real-time tracking in international road and rail transport thanks to Soft-SIM. It increases operational efficiency and strengthens security.