



CUSTOMIZED EMBEDDED SOLUTIONS

Engineering | Development | Testing | Hardware Design | Quality Assurance

➤ **WE ARE
IN NUMBERS**

+20

years in the business

+60

employees

2

locations

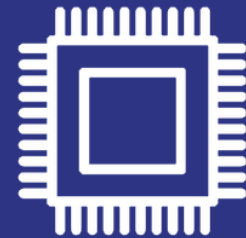
PARTNERS & ALLIANCES:



SERVICES



**SOFTWARE
DEVELOPMENT**



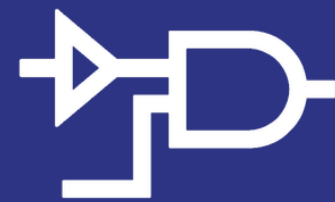
**EMBEDDED
SYSTEMS**



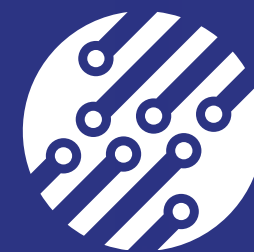
TESTING



**MOBILE
TECHNOLOGIES**



**FPGA
DESIGN**



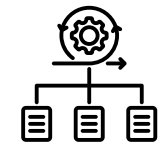
**HARDWARE
DESIGN**

TECH STACK



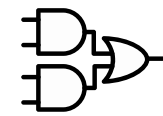
OPERATING SYSTEMS:

FreeRTOS, Linux, Windows Embedded, MacOSX, iOS, Sciopta, QNX



FRAMEWORKS:

Unity, Objective-C, .NET, QT



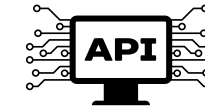
HARDWARE DESCRIPTION LANGUAGE:

VHDL/Verilog development for CPLD/FPGA



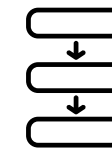
TOOLS:

Lauterbach TRACE32, Powervision Configuration Studio, NI Teststand, Ni LabView, Vector Tools (Canoe, Canalyzer, vTestStudio), Testlink, PTC Windchill RV&S (formerly Integrity) IBM Rhapsody, Cantata, Astree, ETAS INCA



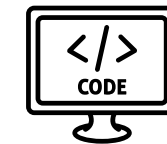
INTERFACES:

Ethernet, CAN, RS422, RS485, I2C, SPI, USB



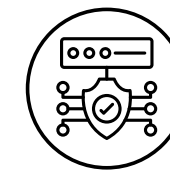
METHODOLOGIES:

V-model, SCRUM, AUTOSAR, PRINCE2, ISTQB, UML Automotive SPICE



PROGRAMMING LANGUAGES:

C, C++, C#, Python, Assembler, JAVA, Swift, Objective-C



PROTOCOLS/STANDARDS:

Modbus, JTAG, CANOPEN, SAE J1939, NMEA2000, IEC 61508, Ethercat, TCP/IP, UDP, ASAM, MISRA C

OUR TEAM

EMBEDDED SOFTWARE DEVELOPMENT

- Embedded C/C++, Assembler, development
- Software debugging
- HMI/GUI development
- Driver development
- PC interface development
- Performance analysis
- UML workflow design
- Obsolescence engineering
- BSP

DESKTOP SOFTWARE DEVELOPMENT

- C/C++, C#, JAVA development,
- Database access interface
- GUI development
- Integration with 3rd party tools
- UML workflow design
- Python/VBS scripting
- Data converters
- Obsolescence engineering

HARDWARE DESIGN

- Embedded electronics design
- Schematic capture, PCB layout, and circuit simulation
- Obsolescence engineering, reengineering of existing solutions to comply with changing industry standards
- Preparation of manufacturing documentation
- Maintenance of developed products
- Testing and debugging of hardware prototypes

EMBEDDED SOFTWARE TESTING

- Module test
- Software integration test
- Device test
- System test
- Test automation
- Software in the loop
- Test framework development
- Test environment design for device and systems test



QUALITY ASSURANCE

- Maintenance of ISO 9001:2015
- Taking part in reviews
- Maintenance and updating of documentation mainly related to the verification (testing + development)

FPGA DESIGN

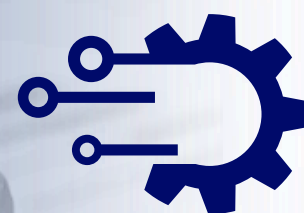
- Design development
- Testbench creation and waveform analysis
- Design implementation and synthesis (place and route + synthesis at development unit (board))
- Timing analysis (tool objected)

MODELS OF COOPERATION



FIXED PRICE

This model assumes agreement on a set budget for a defined scope of work. Requirements are clearly defined and costs agreed upon. Transparent and easy to manage model with a flexible control over the project. Additional costs of equipment or software necessary for project implementation will be billed separately.



TIME AND MATERIAL

A model, based on the hourly rate, determines the price of time worked during the project development, needed software licenses and hardware. The model assumes invoicing in 1-month cycles based on employee timesheets using the agreed upon hourly rates.

We're ready to customize our approach to best meet the needs of the client.

➤ DELIVERY MODELS



In our client's best interest, we offer flexibility to adjust our processes to match their processes, ensuring seamless integration with their team members. By customizing our approach with client workflow, we improve efficiency, reduce transition times, and foster a strong working relationship.

We have successfully implemented both V-model and Scrum methodologies in our collaborations.



•
SCRUM



•
V-MODEL

➤ WHY US?

- **TRANSPARENCY**

We conduct our projects transparently. At any stage of our cooperation, you will have access to all information concerning your product.

- **ENGINEERING QUALITY**

We work tirelessly to satisfy the clients' requirements and meet every expectation while keeping the highest possible quality at each level of product development.

- **BUSINESS LOYALTY**

Our commitment to client satisfaction drives every decision we make. We treat each client and their requirements individually, aiming to understand unique needs and act in their best interest. GRYFTEC refrains from engaging in any business activities with the direct competitors of our clients.

- **COMMITMENT**

The key factor in our relations with partners is commitment. On a daily basis, we assist our clients in meeting their goals and objectives.

GET IN TOUCH



• HEADQUARTERS:

GRYFTEC Embedded Systems Sp. z o.o.
1Maja 38
71-627 Szczecin, Poland

+48 91 85 11 660
info@gryftec.com

• BRANCH OFFICE:

al. Monte Cassino 6
75-412 Koszalin, Poland

