

**22 mai 2025**

**The Paris Region GenAI :  
European AI for student guidance**

# The Paris Region

## A key European business hub

31% of national GDP

1,4 M companies incl. 2000 SMEs and 250 large companies

Leader in financial services, aerospace and defense and pioneer in new mobility, smart city, cleantech; health and life sciences ; IT and digital economy ; creative industries and cosmetics for instance.

## European R&D leader

38% of R&D workforce and 30% of scientists in France

#1 in Europe for R&D expenditure

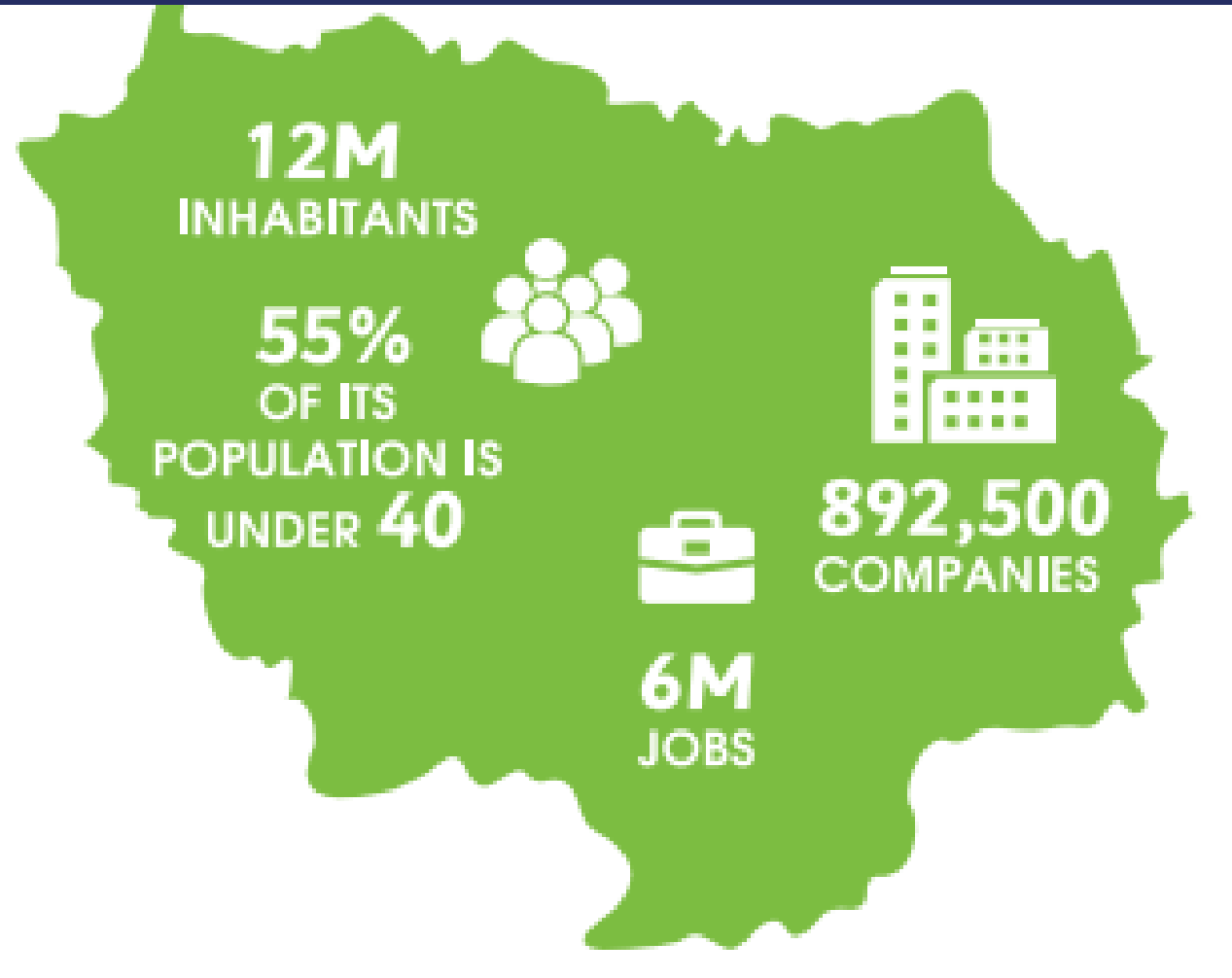
## An innovation hotspot

5,000 tech start-ups and 100 business incubators

#10 largest science and technology cluster in the world

## Educational responsibility

Regions have full responsibility for providing information on careers and educational opportunities



# Paris Region project Idea

## The issue faced

- Lack of informations to guide students at the local, regional, national and european level
- Erasmus is a bilateral system between european institutions
- As a student, there is no way of choosing the home university in accordance with the academic programme of the exchange university
- The professional career is mostly thought and built at the national level
- Students in professional training do not take advantage of the Erasmus opportunity

## The solution

- To develop a european LLM/SLM orientation AI for the 14-29 years old which will be extent to employees undergoing retraining in Europe
- A european LLM/SLM (Small language model) on studies guidance regarding european issues
- Train the LLM/SLM using inference datas of partner regions
- Pocket AI using vocals
- AI co-developed between regions
- Presentation of the most logical student and carrer plan from the home country through a european path

# GENAI for European career guidance

