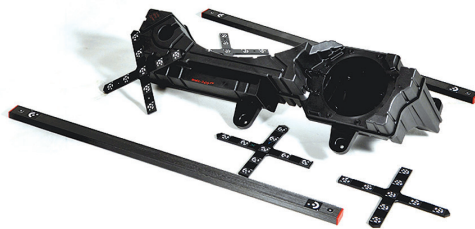
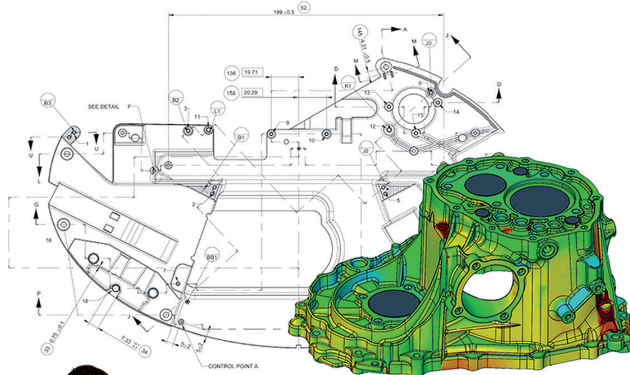




Reverse Engineering

→ Advantages:

- CAD model from scanned file
- Missing CAD file from existing part
- Technical documentation
- Time and cost saving
- Possible corrections on the model
- High precision



Engineering hourly fee: 57 € *



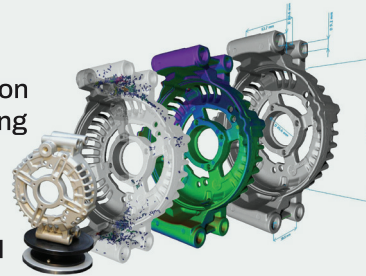
Testing & Measurement

→ Advantages:

- NAH accredited dimensional measurements
- 3D Point cloud
- 3D Colormap (soll-ist test)
- STL file
- Free measurement software
- CMM programming
- Reverse engineering
- Surface roughness measurement
- Material quality
- Surface quality
- Coating durability
- Crack inspection
- Inclusion examination
- Education, consulting

→ Our solutions:

- Zeiss Contura CMM
- GOM 3D Scanbox
- GOM Triplescan
- GOM Tritop
- Werth CT
- GE Micromex and Analyser X-ray
- Climate and Thermal Shock chamber



27 Kistó Street H-8200 Veszprém
Phone: +36 70 36 00 960 • +36 70 42 54 505



hello@alapinspektor.com
www.alapinspektor.com



The prices shown are information purposes only and not an offer or proposal. The cost of a given project is determined individually in each case according to the customers needs.



MEASUREMENT SERVICES

3D Scan | CMM | X-ray | CT
Material testing | Thermal Shock Chamber
Climate Chamber | Reverse Engineering

MSZ EN ISO/IEC 17025 Accredited
dimensional laboratory
and climate test laboratory.



3D Scan, CMM

→ Advantages:

- Dimensions: From the tip of a needle to a bus
- STL file - Stored forever
- Repeatable
- Fast, accurate (up to 3 µ)
- Colormap
- On site measurement
- Measurement program



Climate and Thermal Shock test

→ Advantages:

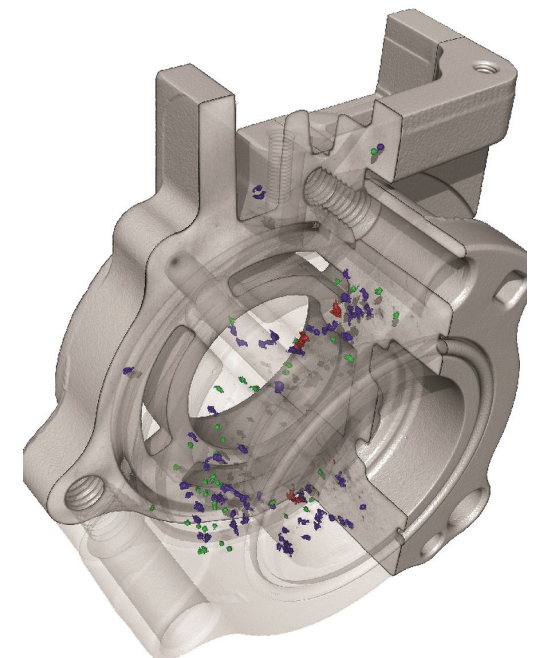
- International standards
- 1 400 litre space
- Temperature range: -(70) - (+180) °C
- Adjustable steam level
- UV Degradation test
- Sunlight simulation



CT, X-Ray

→ Advantages:

- Non-destructive
- Lunker, inclusion, foreign material
- Crack and leakage tests
- High accuracy (up to 5 µ)
- Pictures, videos, STL File



An average part with 50 dimensions,
with Colour map ~ 430 €*

210 €* / day

An average part
with 50 dimensions ~ 480 €*

(Hourly fee: CT = 250 €* , X-ray=55 €*)