



RSCONTROLS

July 2025



Agenda



-
- About Us
 - Background
 - Key Figures & Facts
 - Overview
 - Our Annual External Service Hours
 - Core Competencies
 - Reference Projects
 - Conclusion
 - Contact Person
-



About Us



RS Controls is a Polish company that has been providing state-of-the-art industrial automation services since 2016 – from individual machines to complete assembly lines. In close cooperation with international partners from Germany, Austria, the USA, and China, we develop customized automation solutions for demanding clients.



Background

Our experienced engineering team supports you across Europe – remotely or on-site – with commissioning, PLC programming, as well as HMI and SCADA systems. We also efficiently implement retrofit and modernization projects.



RSCONTROLS



Key Figures & Facts



Employees

16 professionals with varying levels of experience, qualifications, and hands-on expertise gained from successfully completed projects.

Year of Est., and Company Headquarters

2016, Gdańsk

Strategic Location for Global Deployment

Convenient location for international travel and on-site assignments: airport with a global route network, highways, and rail connections.



Current Markets

Poland, Germany, Austria, Italy, United Kingdom, China, USA.



Overview



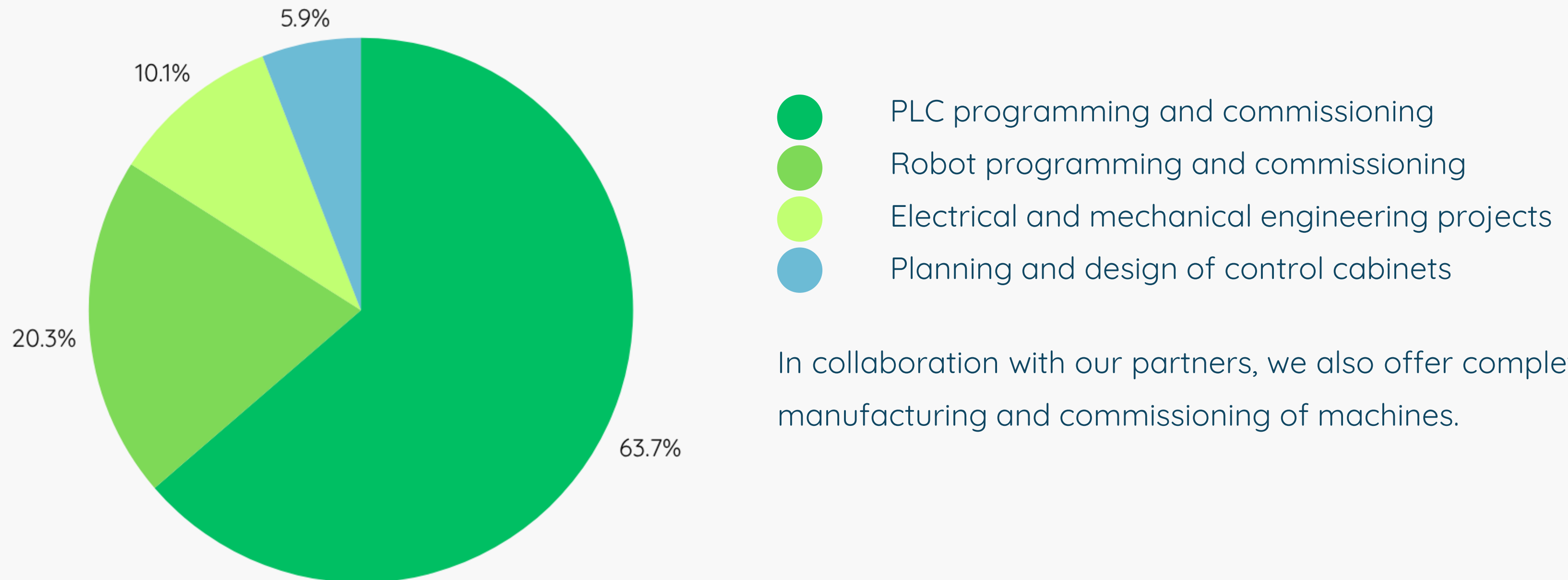
RSCONTROLS

RS Controls is known for flexibility, rapid response times, and highest quality. Our expertise extends well beyond the automotive industry, covering energy, oil & gas, food industry, environmental technology, marine, and intralogistics.

We look forward to successfully supporting your project as well.

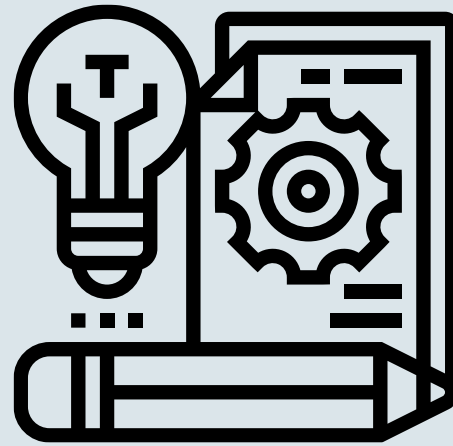


Our Annual External Service Hours



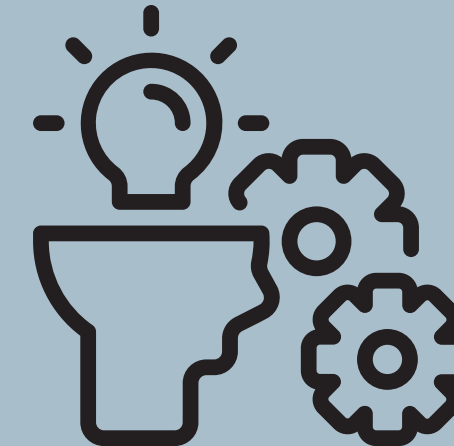
In collaboration with our partners, we also offer complete manufacturing and commissioning of machines.

Core Competencies



Robotics Expertise

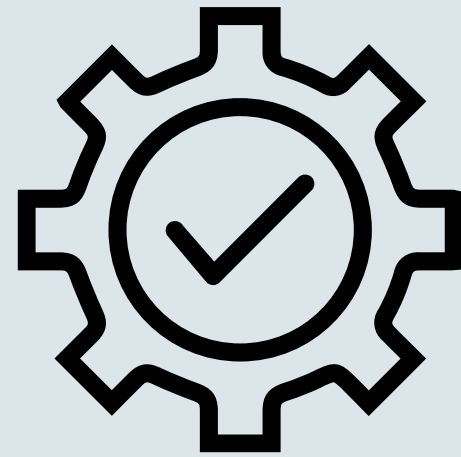
Our robotics team provides comprehensive support in programming industrial robots and integrating external devices using common industrial protocols such as ProfiNet, EtherNet/IP, and DeviceNet.



SCADA & HMI

An intuitive and user-friendly machine interface is a key goal in our development of HMI and SCADA systems. It enables easy function selection, efficient servicing, and reduced downtime through clear user guidance.

Core Competencies



Commissioning and Implementations

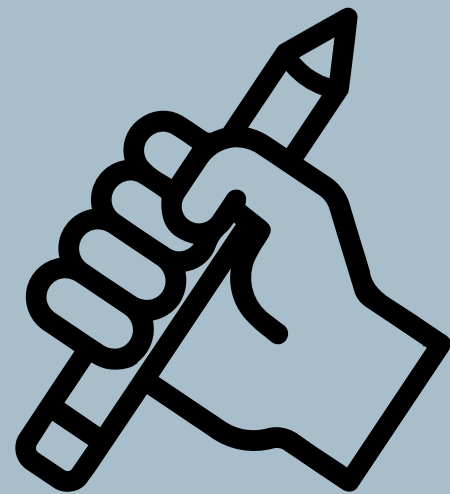
We provide comprehensive system implementations for customers worldwide. Our engineers also work on-site, performing commissioning, FAT and SAT tests, and supporting production as well as its ongoing maintenance.



Optimization and Installation

We optimize your production processes and modernize your equipment for enhanced safety and efficiency. Our experienced expert team specializing in intralogistics, automotive, and other manufacturing sectors identifies, recommends, and implements the best solutions.

Core Competencies



Electrical System Planning

We create new and complete incomplete documentation, and professionally design electrical, hydraulic, and pneumatic systems according to the highest standards using EPLAN P8 / +Fluid, Propanel, WSCAD EE, FE, CE, and SEE Electrical Expert.



PLC Control Programming

Our programmers develop high-quality software for PLC controls based on our own standards or, if required, the client's standards. We have experience programming Siemens, Allen-Bradley, Beckhoff, B&R, and other controllers.

Reference Projects



RSCONTROLS



- Alessandria / Italy
- E-Plan design for workstations
- PLC and HMI programming — SIEMENS
- Robot programming — STÄUBLI
- Commissioning — production line for converters
- Production support, software adjustments



- Krailling (Munich) / Germany
- PLC and HMI programming — SIEMENS
- Commissioning — fuel control and flow systems



- Małkowo and Gdańsk / Poland
- PLC and HMI programming — SIEMENS
- Commissioning — energy system components
- Electrical design — control cabinet planning with Pro-Panel extensions

Reference Projects



RSCONTROLS



- Frankfurt am Main / Germany
- Development of an image processing program, selection and parameterization of the vision system, function development for filtering and evaluating results
- PLC programming directly for the plant — B&R
- WSCAD electrical design — complete documentation



- Poland
- Co-development and theoretical programming of the automation for a fully automatic fish feed production line directly for the plant.



- Gdańsk / Poland
- Retrofit of control cabinets, switchgear, and instrumentation & control (I&C) installations for measurement chambers in the water supply network.

Conclusion



RS Controls stands for tailor-made automation solutions – flexible, scalable, and rapidly deployable to support complex industrial projects internationally.

We provide reliable, end-to-end solutions from planning to commissioning, with speed and precision.

Our approach emphasizes flexible pricing and long-term partnerships.

Your partner for smart industrial automation: RS Controls delivers innovation, efficiency, and top-level technical expertise – dynamic engineering from Poland for your future Industry 4.0 projects.



Contact Person



Rafal Czapiewski

Key Account Manager

Experienced Account Manager with a focus on strategic business development and efficient supply chain solutions. Supports global industrial partners in optimizing their processes – professionally, flexibly, and with confidentiality.

Committed to building sustainable relationships and delivering measurable success.





Thank you for your attention – we look forward to a successful collaboration on future projects!