

Making robots sentient

COMPANY INTRODUCTION

Neuralzome Cybernetics Pvt. Ltd. is a Demerger of the AI & Robotics team + IP from Flo Mobility Pvt. Ltd. (a Blume & DevX Portfolio) into a completely independent entity. The company is led by Mohan Sivam (x Co-founder @ FloMobility) with different investors and cap table focusing more on AI driven robotic technologies.

MISSION STATEMENT

Neuralzome builds product and solutions for industrial(b2b) use cases that has intersection of real-world Robotics and AI (Vision & Perception).

CORE EXPERTISE

We have experience on building & commercialising AI models and Robotics systems that works in the outdoor harsh environments as well as dynamic indoor environments. We have expertise building Camera based outdoor navigation for vehicles & equipments, Computer Vision aided precision farming, Autonomous Scouting, Autonomous Phenotyping, Crop monitoring & Management.

TEAM



Mohan Sivam
CEO &
Founder



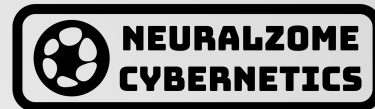
Aditya Shriwastava
CTO &
Co Founder



Sreeram Ravi
Board Member &
Mentor

A total 6 member team with expertise across Mechatronics, Embedded System, System Software and AI

PAST EXPERIENCE



MOHAN SIVAM



**BE
ECE**

*Author of 3 filed Patents
Consulted for 4+ granted
Patents*

CEO & Founder



*>\$150k ARR Deep Tech consultancy
(Bootstrapped)*

CTO & Co-Founder



*Blume Ventures & DevX Portfolio
(First Indian company to commercialize
semi-autonomous outdoor robots)*

Program Manager C2X



*Spearheaded the telematics &
Charging infrastructure
Integration for Vida scooter from
Hero MotoCorp, its first
commercial electric scooter*

Head AI



*Award winning USA Based
Car Dealership Management
Platform leveraging AI*

Head Product



*Multiple Award winning Cricket
AI Tech Company used by
Australia National team and
RR(IPL)*

PAST EXPERIENCE



Aditya Shriwastava



BE Mech.
*(specialization in
robotics)*

Co-Author of 3 filed Patents

Head of Robotics & AI Engineering



*Blume Ventures & DevX Portfolio
(First Indian company to commercialize
semi-autonomous outdoor robots)*

Computer Vision Lead



*Represents BIT at ABU Robocon
(9th all over India ABU ROBOCON, 2015,
MathWorks award for best use of
computer vision)*

Robotics Lead



*Winner of QPrize, NASSCOM Emerge 50,
SAP Startup Social
(Autonomous Robots for Smart
Logistics)*



**SREERAM
RAVI**

Board Member

Investor / Mentor

CEO & Founder



*Building Technology solutions for sustainable
chilli production*

X - CEO & Founder

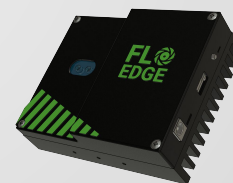
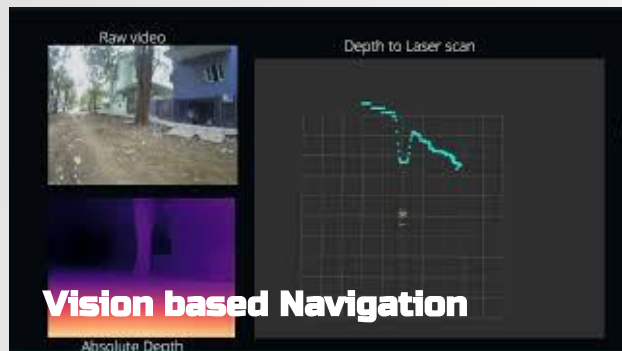


Acquired by Nutreco for \$40Million in 2022

PREVIOUS WORKS



PREVIOUS WORKS



Flo Edge One

ASK

We are looking to build solutions along with partners such as TAFE for problems that has a large scale impact in Europe & US markets. We are open to explore India specific problems as well based on feasibility of adoption at scale.

HOW CAN WE HELP?

We would like explore synergies to build customized hw & sw layer / 3rd party implements on your existing systems and deliver value to the end customers. We would also love to work along with you to explore new markets and invest in building solutions, tech. & provide sales support. Following are few of the areas we can help (we are open to provide other solutions as well).

Autonomy System

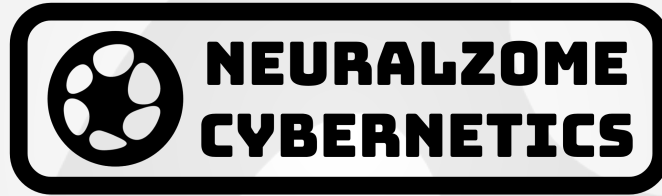
- Autonomy Hardware
- GPS Autonomy Software
- Inter-Row navigation system (Camera Based)
- Vehicle Integration V2X
- Cloud based mission planning
- Vehicle tracking & Monitoring
- Autonomous Scouting, Phenotyping & Loading Robots

Precision Farming

- Specialized 3rd party implement hw & sw development
- Autonomous Plowing / Planting / seeding
- Precision spot spraying
- Precision weeding / thinning equipment
- Customized vegetables / fruit picking & harvesting solution

AI Solutions

- Data collection stack
- 2D & 3D annotation / labelling
- AI Model Training
- Edge AI deployment & Benchmarking
- Crop / Weed Identification
- Fruit / Vegetable annotation
- Crop disease / health / yield monitoring
- Pest Identification



Contact

+91-9488387561

mohan@neuralzome.com

www.neuralzome.com