

eticoa 

Responsible Strategy Sustainable Future

# WHAT'S A CARBON FOOTPRINT ASSESSEMENT?



**A structuring  
tool to assess  
the  
environmental  
impact of an  
organization**



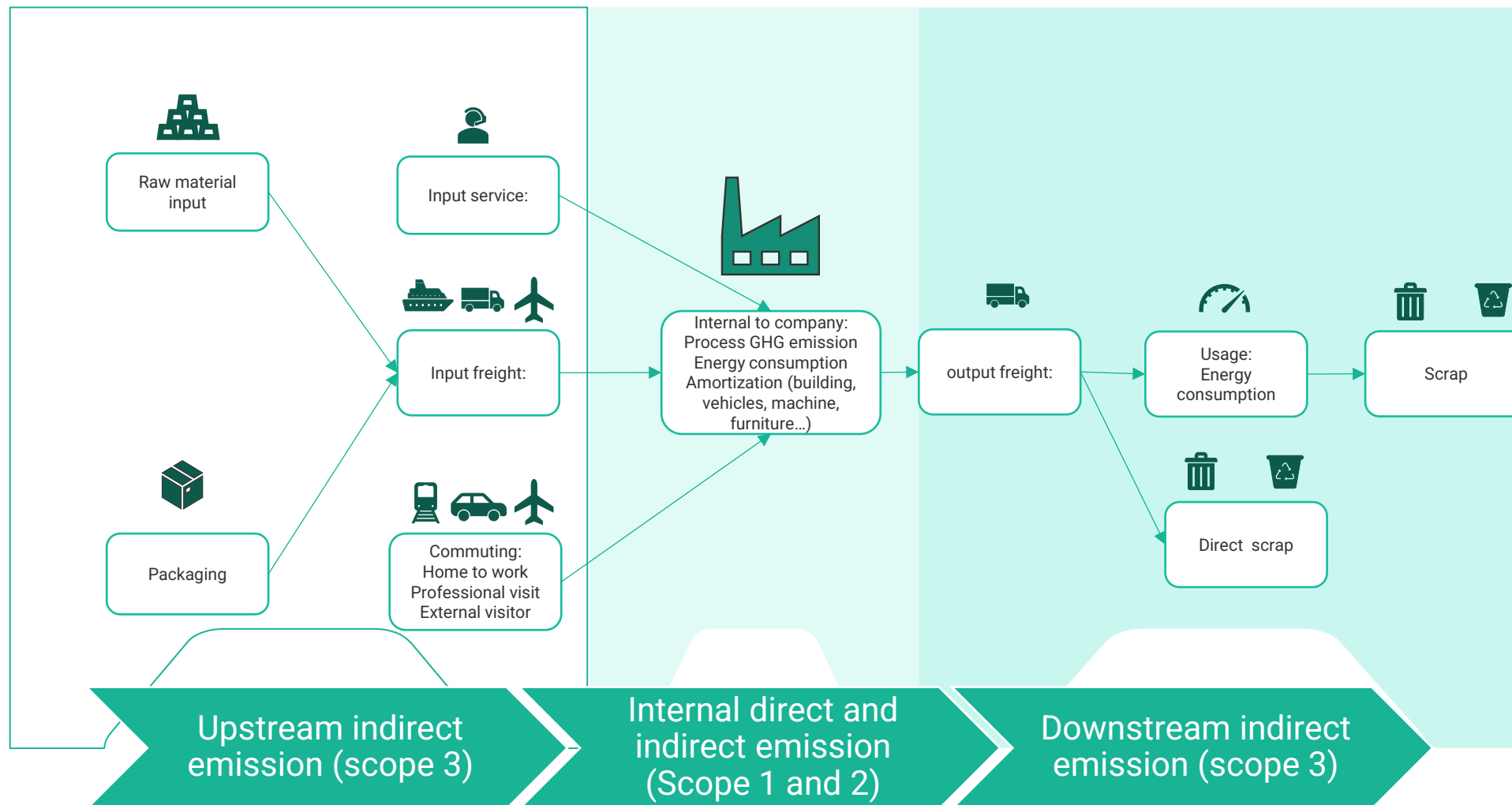
**A strategic  
analysis of the  
dependence of  
an organization  
on the use of  
fossil fuels**



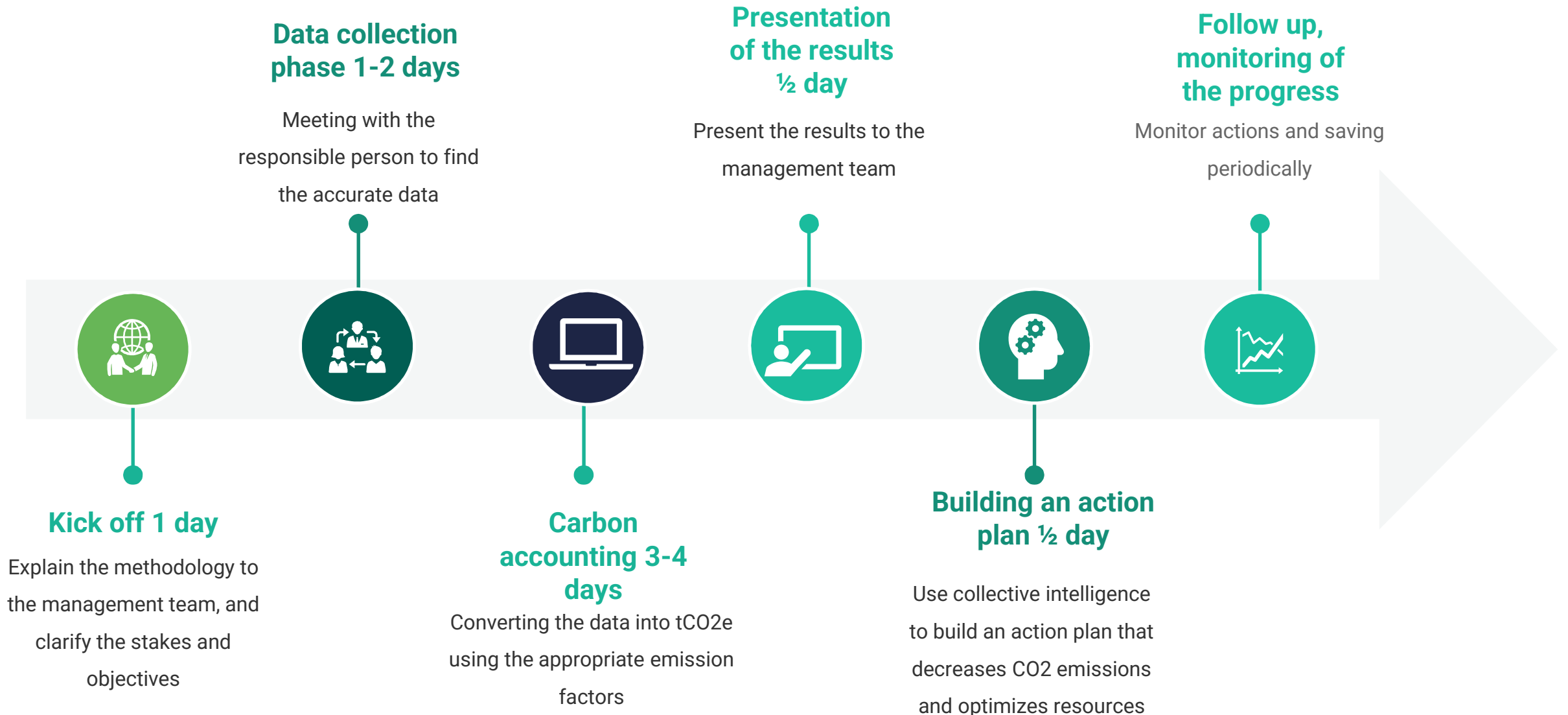
**A methodology to  
identify energy  
cost savings and  
circular economy  
opportunities**



# WHAT IT IS COMPOSED OF?



# What are the steps?



# How much does it cost?



## Initial assessment

1000KHUF + AfA for the assessment described in the previous slide



## A share of the savings

20% of savings found over 1 year, limited to 4000KHUF (meaning you would save at least 20 000KHUF on your side)



## Time

4 days of availability of the workforce that have the data in hand



## Follow up

1 day per year: 500KHUF

Price are indicative , given for a single plant up to 400 FTE

# What are the benefits?



## Financial

A

Depending of your level of maturity on the topic we can help you save up to 20% your energy bills



## Regulation

B

Carbon assessment is helping you to anticipate new regulation such as ESG and CBAM



## Business

C

More and more OEM are asking the decarbonation trajectory and sometimes ask for emission factor with RFQ will become a factor of differentiation



## Risk reduction

D

Decreasing its dependence to fossils fuel makes the future more predictive especially when dealing with energy costs

# WHY CHOOSE US ?

Tailored Solutions

Tangible Results

Strategic Partnership

Continous optimization

**01**

Customized strategies for your industry and goals.

**02**

Measure success through growth, cost savings, and sustainability.

**03**

Guidance from planning to implementation and beyond.

**04**

Ensuring long-term success and competitiveness.