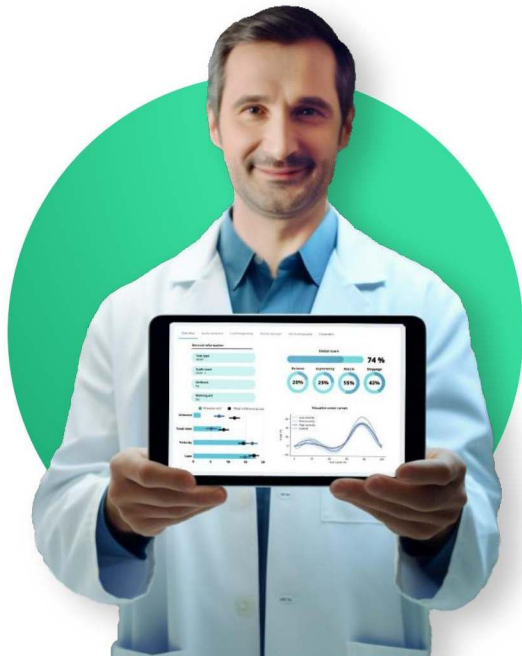




Digital biomarkers powered by AI for the future of healthcare

Quique Llaudet, CEO
quique@ephion.health
Barcelona





Mobility is life. For millions, it's fading in a silent **epidemic.**

A Growing Human Crisis

Millions of patients with neuromuscular diseases, stroke survivors, and frail elderly lose their autonomy and quality of life. In the EU alone, over 300,000 people suffer from neuromuscular diseases.

An Unstoppable Demographic Force

A rapidly aging global population means this problem is accelerating. Frailty affects 10% of the elderly population.

An Unsustainable Systemic Burden

The crisis drives staggering healthcare costs. Fall-related injuries alone cost EU healthcare systems

10€ billion annually.

Today's clinical assessments are flying blind.

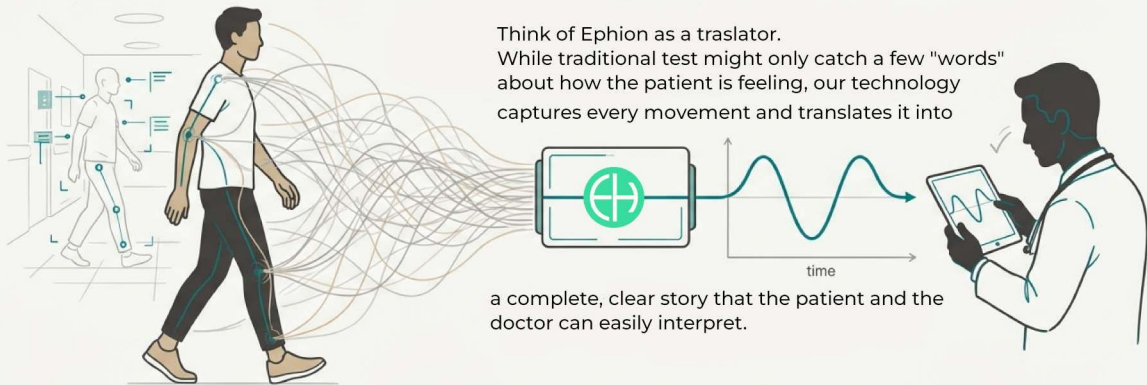
How much difficulty would you say you have in completing the following tasks?	None at all	A little	A moderate amount	A great deal	An extreme amount
Avoiding obstacles in your path of travel	1	2	3	4	5
Walking along streets with footpath	1	2	3	4	5
Walking along streets without footpaths	1	2	3	4	5
Crossing quiet streets	1	2	3	4	5
Crossing busy streets with pedestrian control devices	1	2	3	4	5
Crossing busy streets without pedestrian control devices	1	2	3	4	5
Identifying drop-offs (curbs/steps)	1	2	3	4	5
Negotiating curbs	1	2	3	4	5
Negotiating stairs	1	2	3	4	5
Getting around in your home and garden	1	2	3	4	5
Getting around immediate neighborhood	1	2	3	4	5
Getting around office buildings/schools/hospitals	1	2	3	4	5
Getting around departments stores	1	2	3	4	5
Getting around supermarkets	1	2	3	4	5
Getting around shopping malls	1	2	3	4	5
Negotiating parking lots	1	2	3	4	5
Travelling on lifts	1	2	3	4	5
Travelling on escalators	1	2	3	4	5
Maintaining orientation during travel	1	2	3	4	5
Re-establishing orientation if lost	1	2	3	4	5
Travelling in familiar outdoor environments	1	2	3	4	5
Travelling in unfamiliar outdoor environments	1	2	3	4	5
Using public transportation	1	2	3	4	5



Subjective & Biased: Relies on visual observations and patient-reported outcomes, which are prone to bias and mood variations.

Insensitive & Infrequent: Fails to detect small but clinically significant changes, offering only 2-3 snapshots a year and missing the complete story of a patient's progression.

Our Solution: A High-Precision Translator for Your Mobility



We use simple, **off-the-shelf**, wearable sensors and advanced AI to create **digital biomarkers** - an objective, sensitive score that reflects the patient's true functional health status.

Objective data from any sensor, transformed into actionable clinical insight.

1. CAPTURE



Patients perform simple movements at home or in the clinic using off-the-shelf commercial wearables.

2. ANALYZE



Our proprietary, patented AI models process multi-modal data in the cloud, generating holistic digital biomarkers.

3. ACT



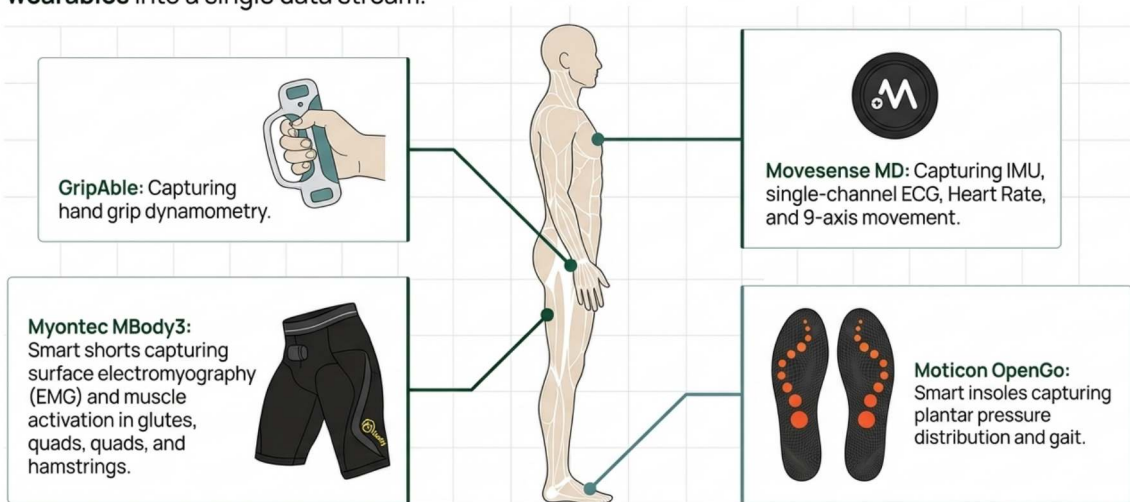
Clinicians view an intuitive dashboard with an objective "Ephion Score," enabling them to track disease progression, measure therapy response, and predict risks like falls.

Hardware-Agnostic



Hardware-Agnostic Multi-Modal Integration

We avoid vendor lock-in by integrating the world's most validated, off-the-shelf commercial **wearables** into a single data stream.



Built to the highest standards of medical technology.



Intellectual Property

Granted European Patent
(Application PCT WO/2023/203048)
protecting our core methodology for
generating holistic digital biomarkers.



Quality & Compliance

ISO 13485 Certified, the international
standard for medical device quality
management systems, ensuring
robust processes and product safety.



Market Access & Data Security

On track for **EU MDR Class IIa certification** as a Software as a
Medical Device (SaMD), enabling
commercial sales across Europe.
Fully GDPR and HIPAA compliant.

Healthcare Providers & Rehab: Clinical Decision Support

Transforming traditional, manual functional tests (6MWT, TUG, 10mR, 5STS) into a continuous source of objective digital intelligence.



Pharma & Clinical Trials: Digital Endpoints

36% Reduction in Trial Sample Size

(Validated against the standard 6MWT in DMD trials).

Sensitive Digital Endpoints

Capturing subclinical disease progression invisible to the naked eye for Phase I-IV trials.

Rare Disease Focus

Proven adaptability for tracking subtle functional changes in Neuromuscular Diseases (Duchenne, Pompe) and Chronic Neuropathies (CIDP).

Real World Evidence (RWE)

Empowering pharma to collect continuous, objective, high-fidelity data in decentralized or home settings.

Validated by Industry Leaders: Public Credibility & Partnerships

IQVIA



Commercial agreement: Shared GTM

"Since January 2024, our organizations have been **successfully offering combined services and technology solutions** to pharmaceutical companies seeking RWE studies for their novel neuromuscular drug therapies."



Ana Perez Velamazán
Commercial Vice President Spain and Portugal at IQVIA

Argenx



Commercial agreement: 2 projects

"Ephion's platform can offer **scalability, precision, and patient-centricity**—qualities that are increasingly critical in today's dynamic healthcare landscape. We are excited by the prospect of working alongside Ephion's talented team to pioneer solutions that may not only benefit CIDP patients but also can serve as a model for future collaborations in other therapeutic areas."



Marina Ruizperez
General Manager Iberia at argenx

Tech & Medical Validation

Google for Startups

- ✓ Growth Academy: AI for Health Selected for 2024 Program
- ✓ More than 10 scientific presentations and peer-reviewed publications.
- ✓ Used by top clinical Key Opinion Leaders



Dr. Jordi Diaz-Manera



"I believe Ephion's tool could be of great value in Clinical Trials"



Dr. Luis Querol



"Ephion's platform could have great applicability in all Neurological diseases"

Proven Leadership and World-Renowned Scientific Backing



Enrique Llaudet,
CEO & Co-founder

PhD, IESE MBA. Serial biotech entrepreneur with a proven track record in building successful life science ventures.



Mireia Claramunt Molet,
CTO & Co-founder

MSc Biomedical Engineer, Woman in Leadership. The architect of our scalable, sensor-agnostic clinical platform.



Sebastian Idelsohn,
CSO & Co-founder

PhD Mechanical Engineering. Bridges clinical strategy and scientific rigor, with deep expertise in biomechanics.

Scientific Advisory Board - Our Strategic Advantage

Prof. Jordi Diaz-Manera | Newcastle University

Global Key Opinion Leader in neuromuscular disorders, providing direct access to pharmaceutical partners (e.g., Astellas, Amicus Therapeutics).



Dr. Julita Medina | Hospital Sant Joan de Déu

Clinical research leader in pediatric neuromuscular disease, ensuring clinical relevance and adoption.



Dr. Luis Querol | Hospital Sant Pau

World-renowned expert in peripheral neuropathies. Provides clinical leadership for validating digital biomarkers and guiding RWE studies.



Institut
de Recerca
Sant Pau

Ofir Arad | Anaconda Biomed

Successful med-tech entrepreneur providing guidance on startup governance and scaling.



Ephion Health is an early member of DEEP Measures

